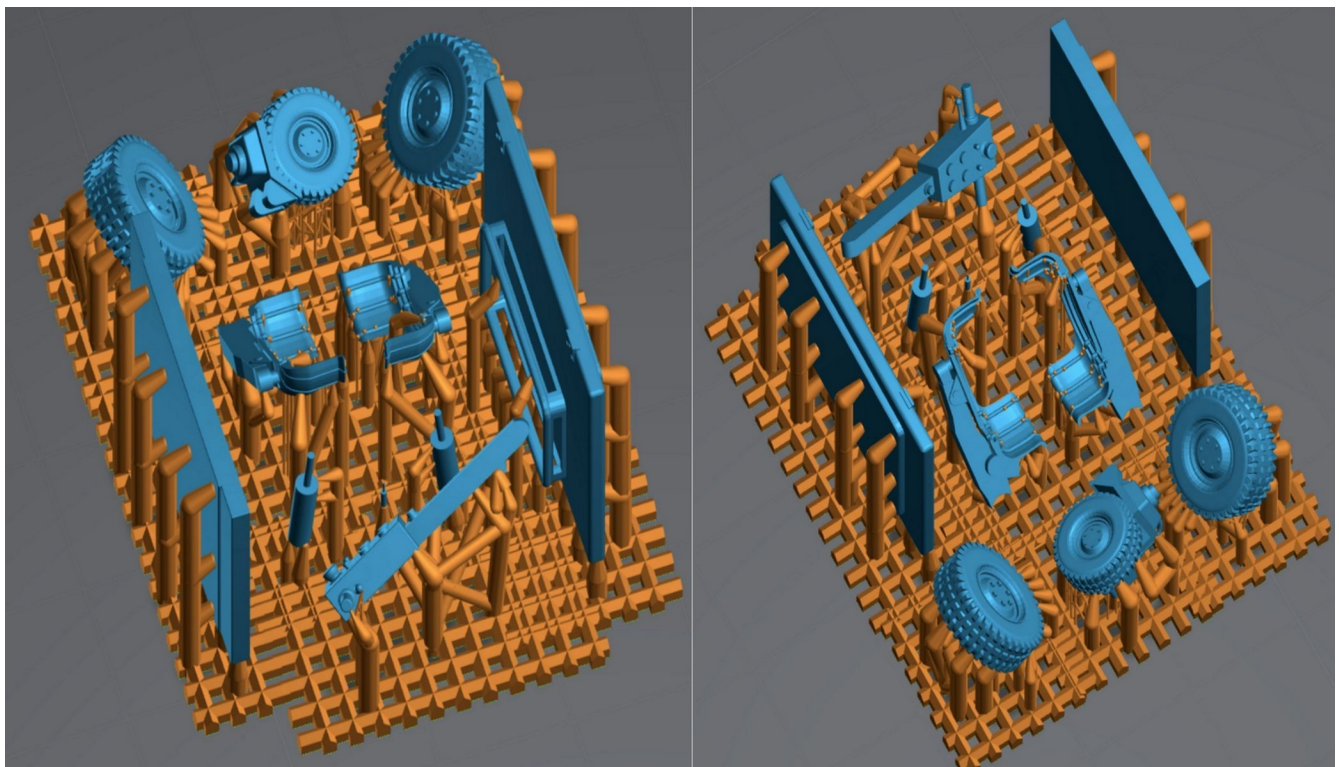
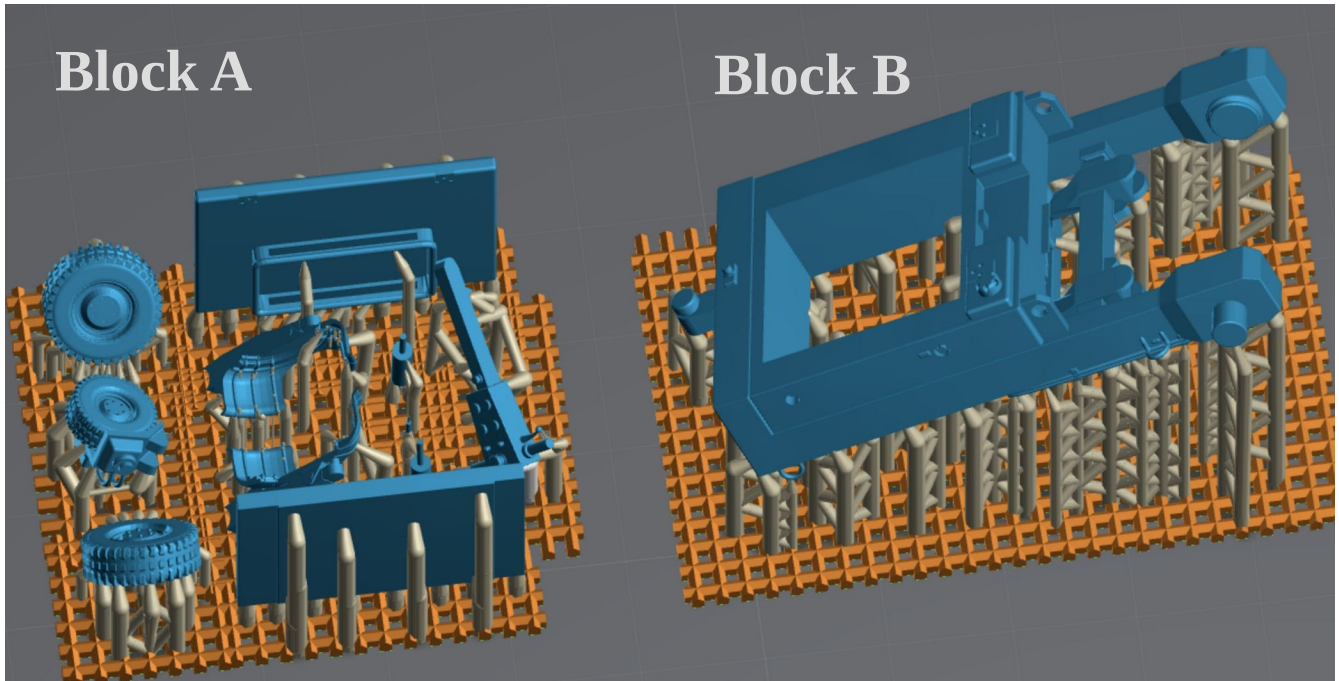


EINSA M/VAE-10

The product has two blocks.

Block B contains the main chassis, and block A includes the wheels, aircraft handling devices, and hydraulic cylinders.

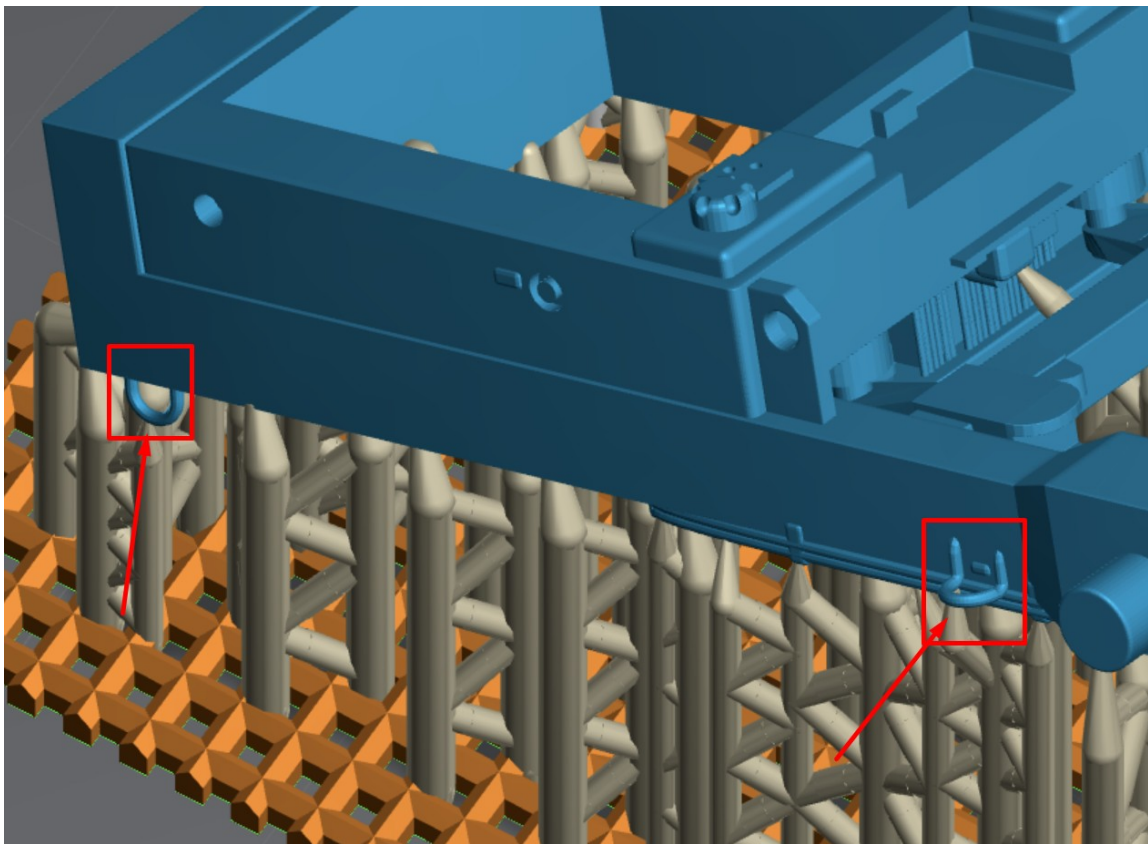


To remove the supports, you can use a sharp blade or nippers.
To glue the different pieces, use cyanoacrylate-based glues.

Assembly

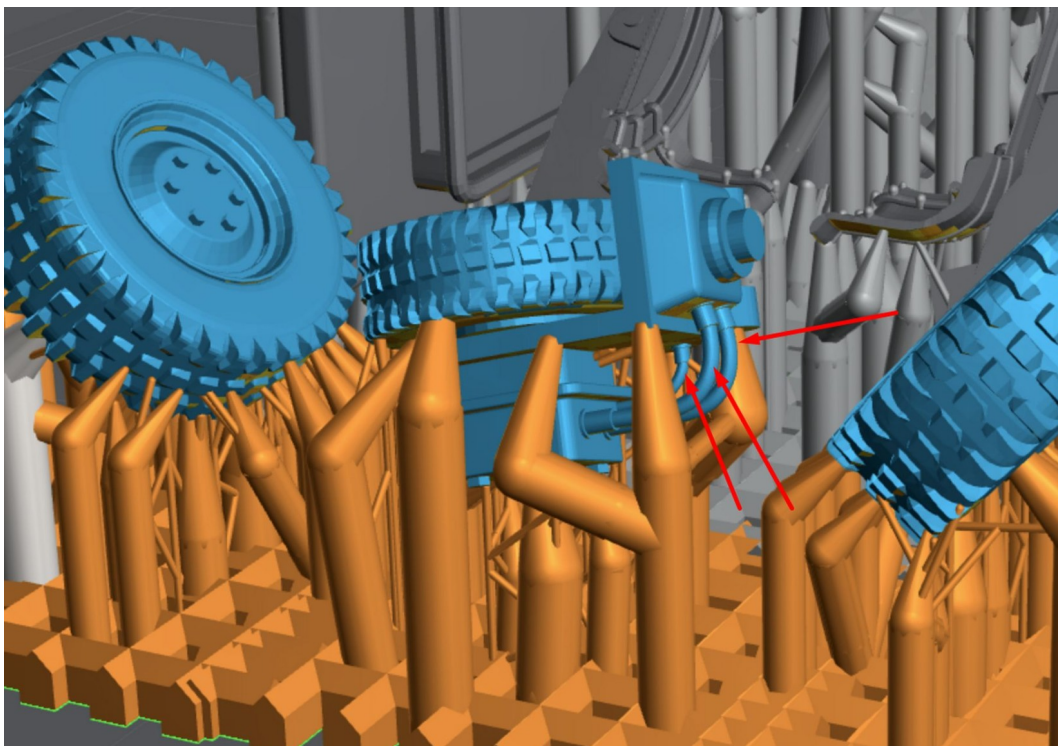
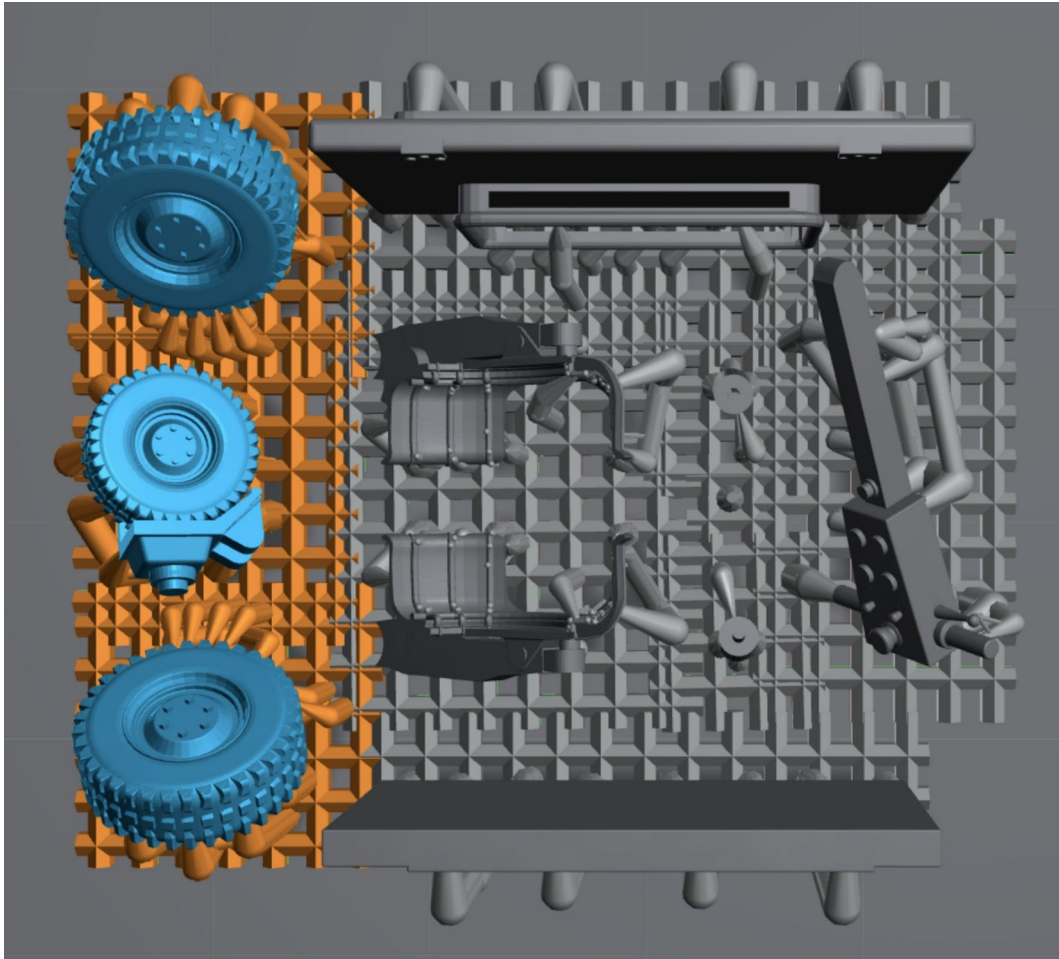
Tip → Take your time to become familiar with the different parts. Removing the supports requires to exactly know what you are cutting, and if made without proper observation will damage your model.

1- Take the chassis from block B and carefully remove all the supports. There are several details in the model that are easy to break/remove.

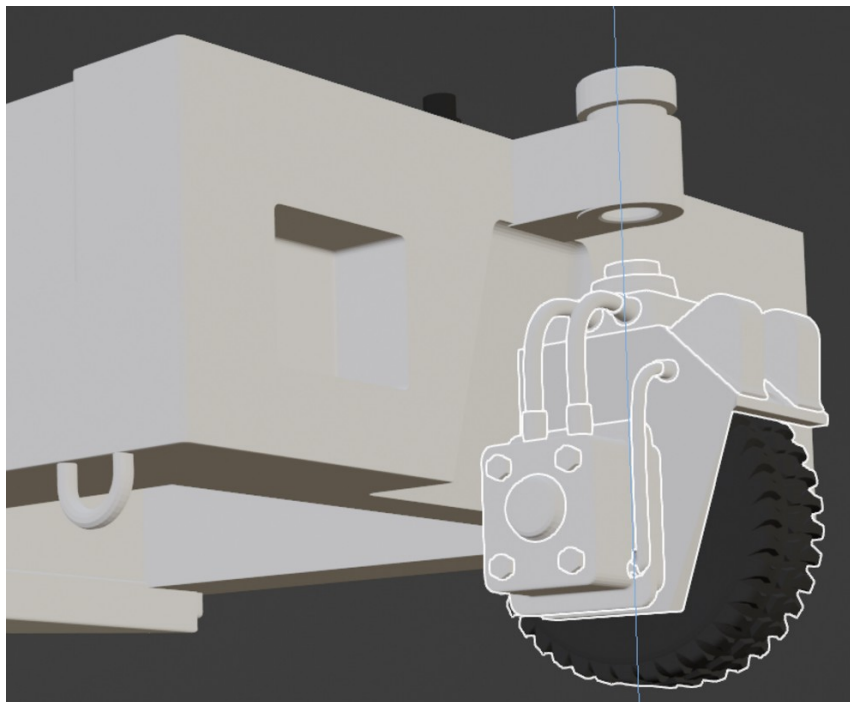
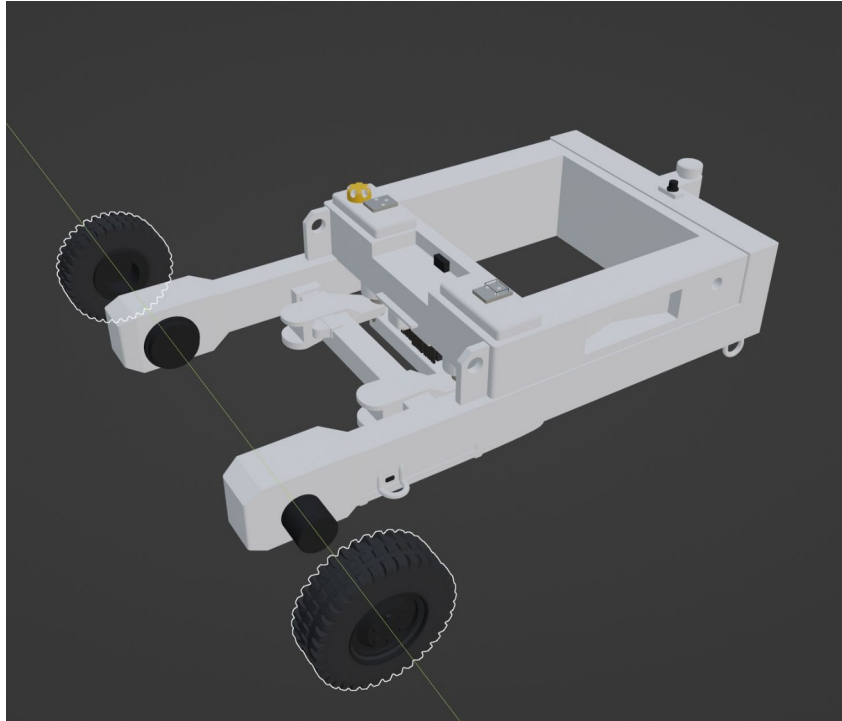


Tip → Start cutting supports from the base; this will make it more challenging to break fragile details.

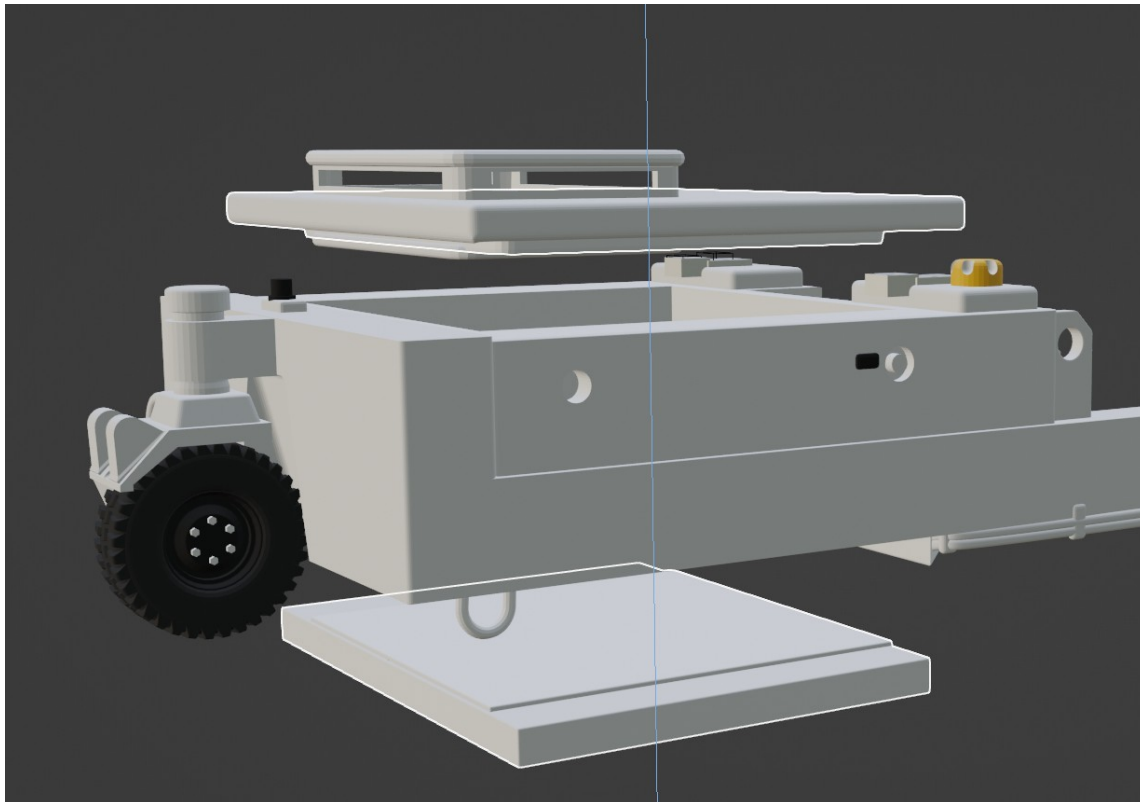
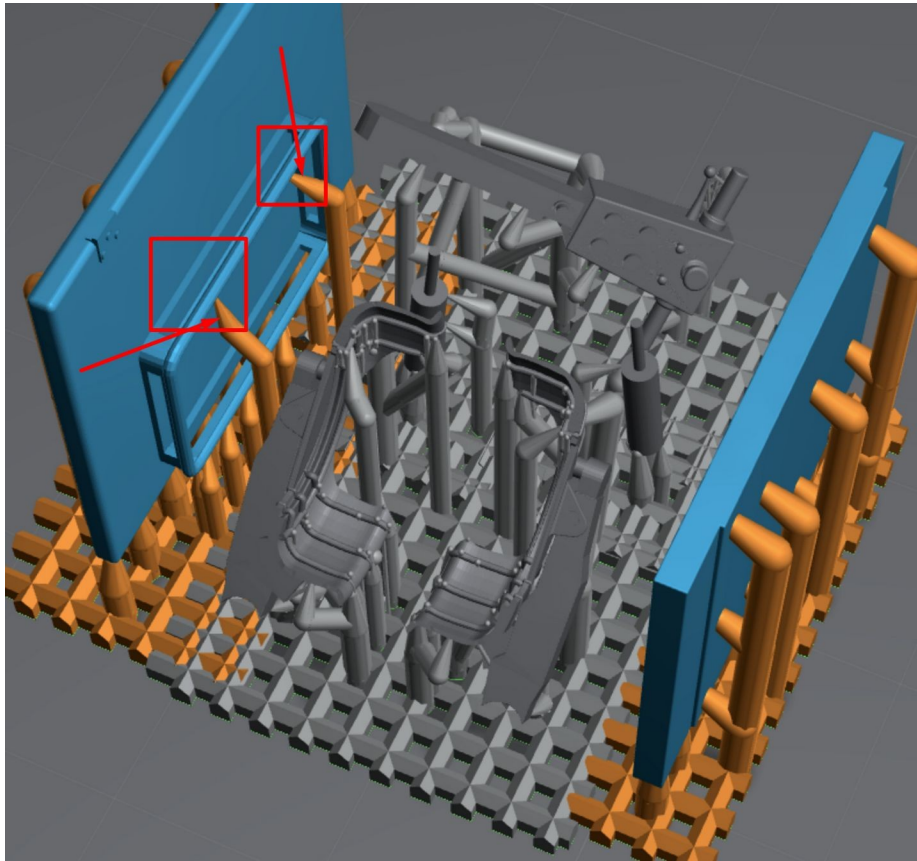
2- Extract the wheels from block A removing all the supports; as always be careful with the details.



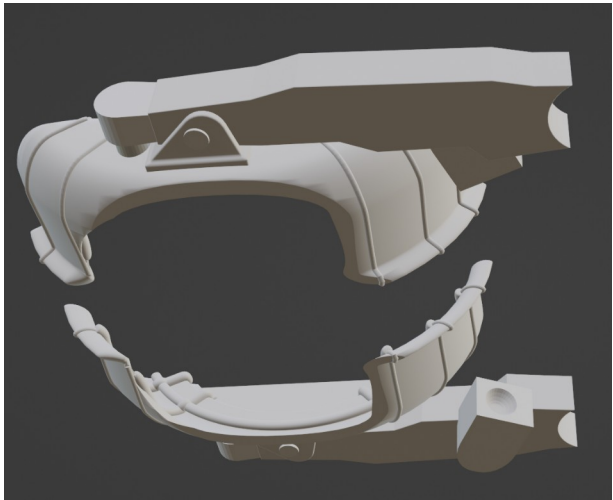
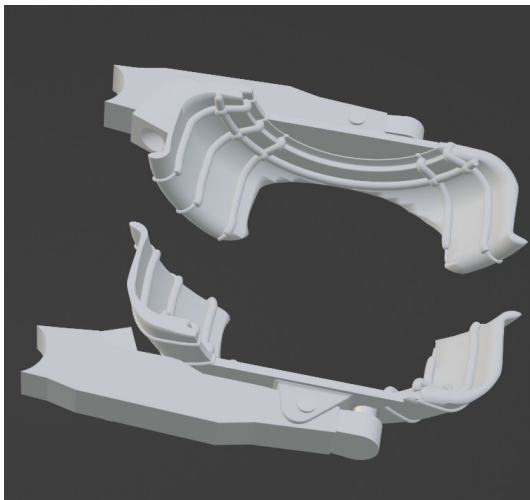
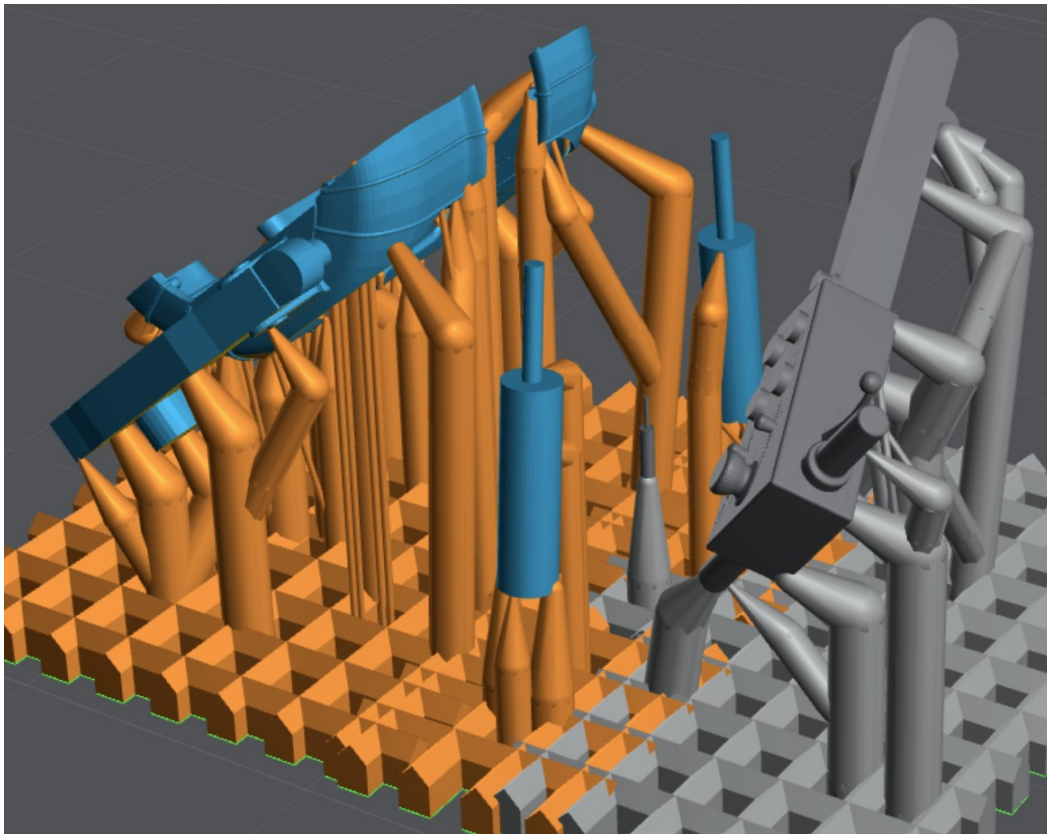
Glue front and rear wheels.



3- Extract the chassis covers from block A, remove all the supports, and glue them together.

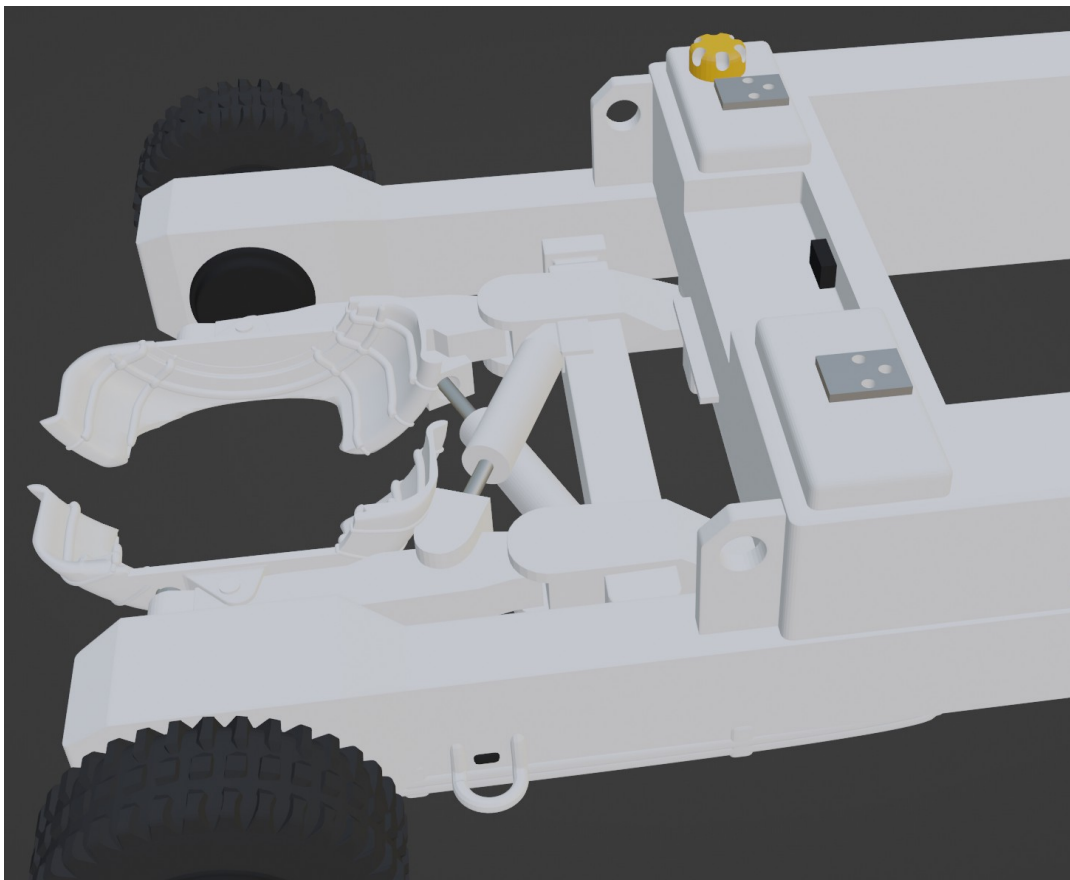
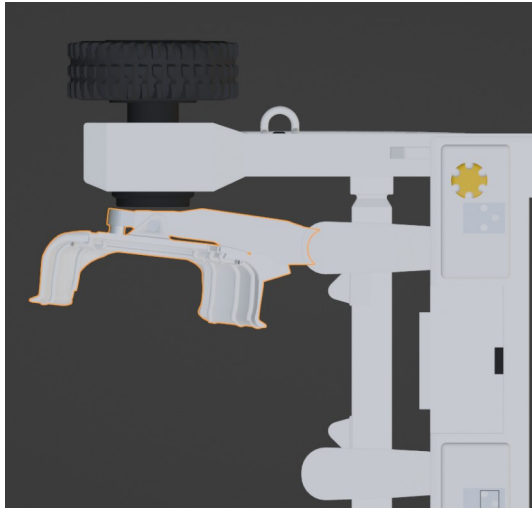


4- Extract the aircraft handling devices and the hydraulic cylinders.

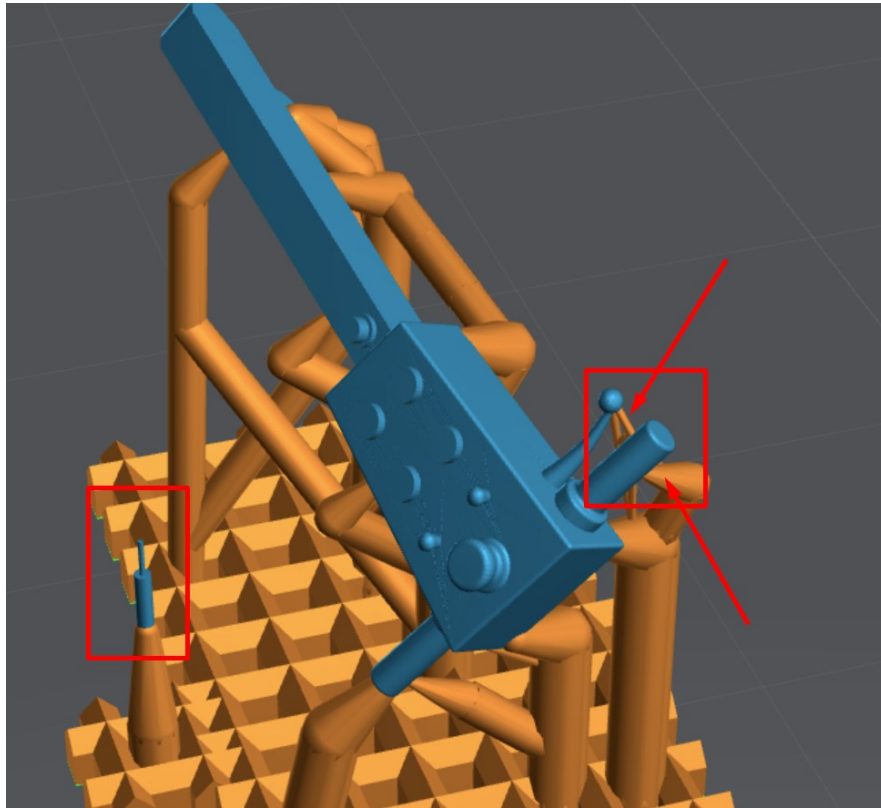


It is possible to adjust the angle of the devices.

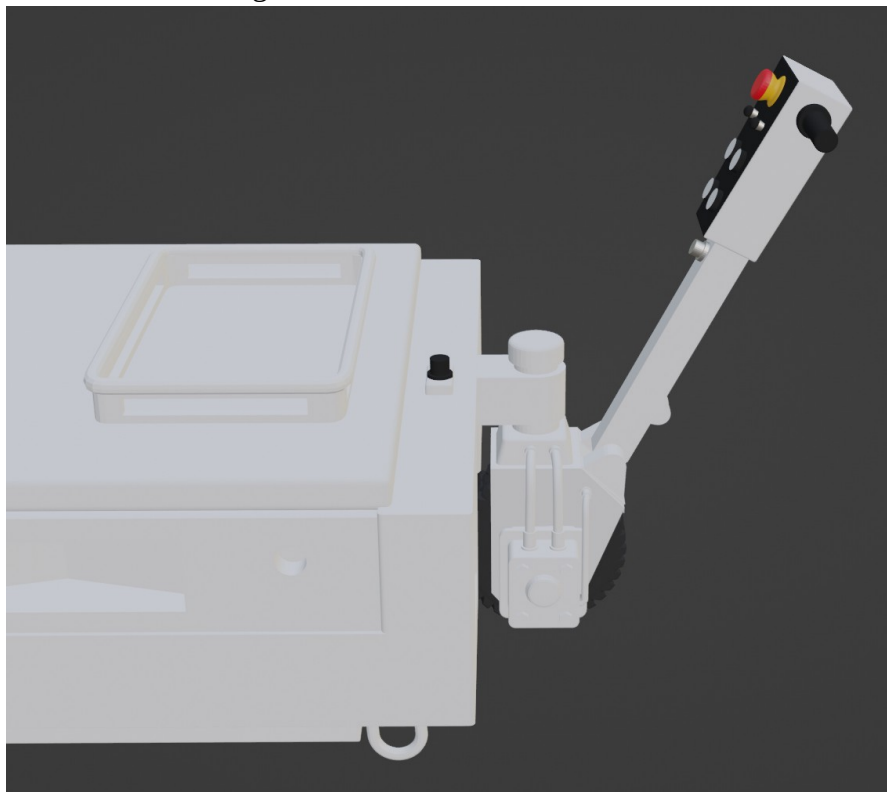
Choose the angle that better fits your project, and then adjust the hydraulic cylinder length if required.



5- Extract the handler and front hydraulic cylinder.



Glue the handler with the desired angle.



6- With a piece of wire, add the cable.

