

W.W.II ALLIED BAILEY BRIDGE TYPE M2

1/35 SCALE

二戰盟軍M2型組裝橋



During the months preceding World War II, new tanks were developed that weighed up to 35 tons, such as the M3 Grant and M4 Sherman tanks. Sir Donald Bailey, of Britain's Royal Engineers, designed the Bailey bridge in 1940 to meet this new requirement. Production began in July 1941. The Bailey bridge is a portable pre-fabricated truss bridge, designed for use by military engineering units to bridge up to 60 m (200 foot) gaps. It requires no special tools or heavy equipment for construction, the bridge elements are small enough to be carried in trucks, and the bridge is strong enough to carry tanks. The Bailey provided an excellent solution to the problem of German and Italian armies destroying bridges as they retreated. By the end of the war, the US Fifth and British Eight Armies built over 3,000 Bailey bridges in Sicily and Italy alone, totaling over 55 miles (90km) of bridge, at an average length of 100 ft (30m). Up till today the Bailey bridge still can found in some where of the world.

二次大戰開始後，盟軍極需要一種簡單容易運輸及組裝之橋樑以應付不斷增加之新坦克重量。此任務由英國皇家工兵部隊之唐納伯利爵士負責，由1940年開始設計至1941年7月完成並投入量產，並用設計者唐納伯利爵士之姓氏來命名。此組裝橋之好處是簡單，不需特別工具及重型裝備協助組裝。後來此組裝橋在歐戰期間發揮極佳之功能，使盟軍在短期內修復遭德軍及義大利軍破壞之橋樑，發揮迅速推進效果，加速軸心國戰敗之結果。大戰後此組裝橋協助修復各戰禍地區；其改良型至今仍廣泛使用世界各地。

ILLUSTRATION 圖示說明：

CORRECT METHOD FOR APPLYING DECALS 正確使用水貼紙方法：

1. Clean model parts surface with wet cloth.
將需要貼上水貼之部位表面擦乾淨。
2. Cut out the decal parts and dip them in cold water for 15 ~20 seconds.
將所需之貼紙剪下泡在清水裏約15至20秒。
3. Place it on correct position of the model kit.
將濕透之貼紙取出置放於正確之位置旁。
4. Slide off the decal from the base paper on to the model kit surface with a cotton stick.
用棉花棒輕推貼紙表面使其從底紙滑出至模型表面之正確位置。
5. When decal get dry then complete.
待其自然乾透後即完成。

ICON INSTRUCTION 圖標說明：



Open Hole
鑽孔



Remove
切除



2 Sets needed
同樣的製作二組



Bend
曲折



Optional
可以選擇採用



Apply Decal
貼上水貼紙



Instant Glue For Metal
瞬間接著劑, 金屬用



Fill Hole
把孔填平

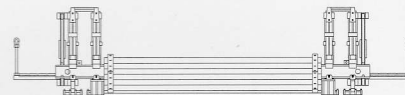
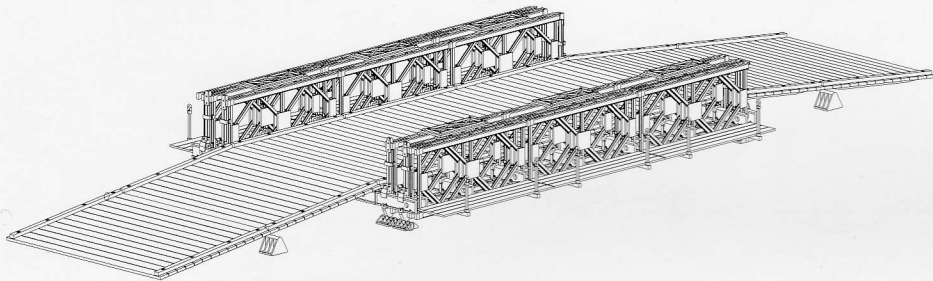


Do not cement
不用黏合

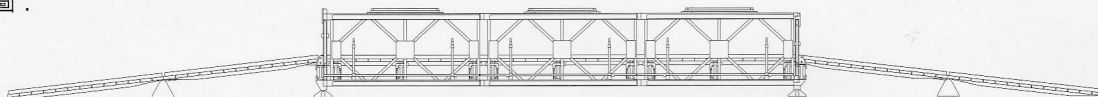
COLOUR GUIDE 塗色指示：

Overall 整體：Olive Drab 橄欖褐色

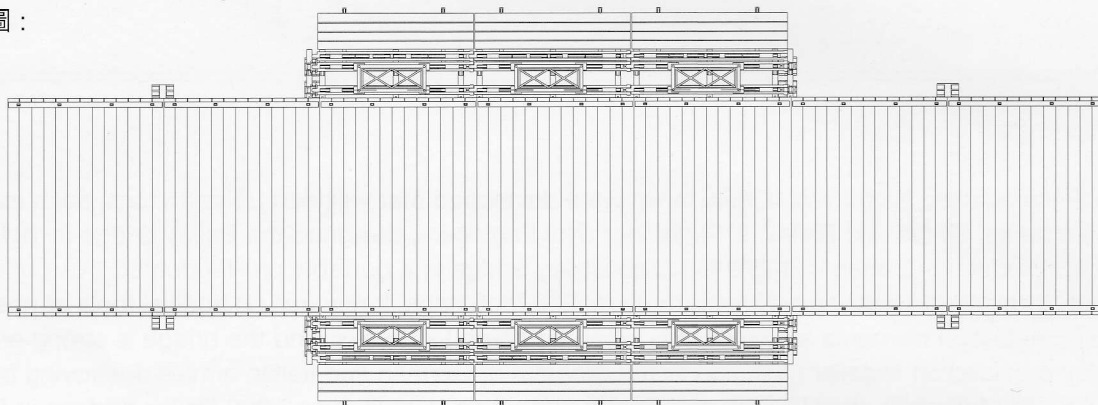
Front View 正面圖：



Side View 側視圖：



Top View 頂視圖：



*Caution : This model kit can be extension with the additional parts or another bridge kit.

*注意：如使用額外零件或另一組膠件，此模型可伸延長度及改裝成其他形態。

COLOR SUGGESTION 塗裝指引：

Gunze Sangyo	Hobby Color	Gunze Sangyo	Hobby Color	Humbrol	Tamiya
Olive Drab	橄欖褐	H-78	C-38	66	XF-62

READ BEFORE ASSEMBLING

- * Carefully Study instruction before assembling. 組裝前請閱讀清楚製作指引。
- * Keep plastic model glue and tools away from children. 膠水，油漆及工具勿讓小孩接觸。
- * Do not use cement or paint near open flame or sparks. 膠水及油漆勿接觸火種。
- * Do not work in closed room. 勿在密封地方製作模型。

PARTS LIST 零件展示表 :



Bronco Models

Copyright*2006

Made in China

中國製造

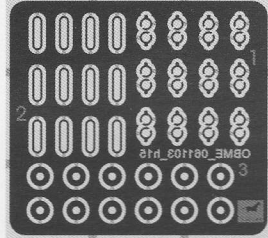
MM x 12



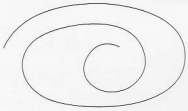
H x 3



MA x 1



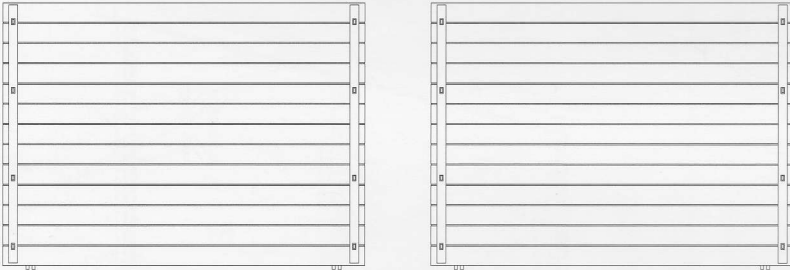
S x 1



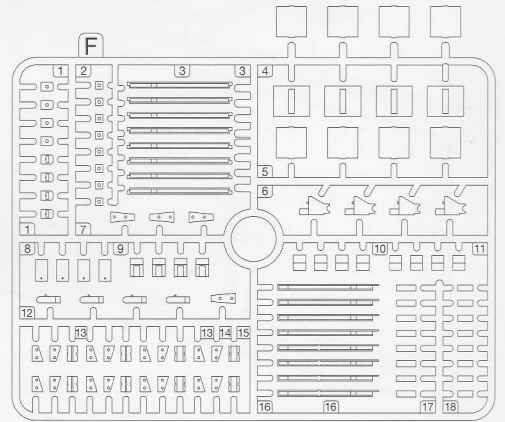
J x 1



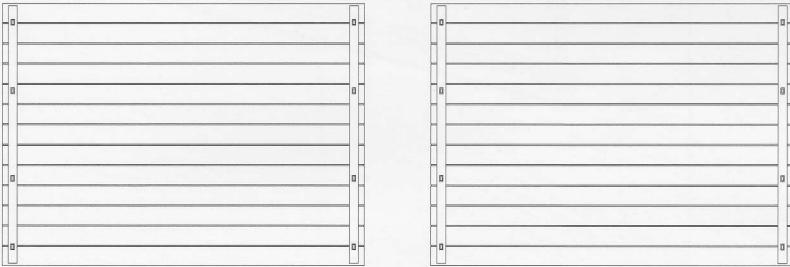
GA x 2



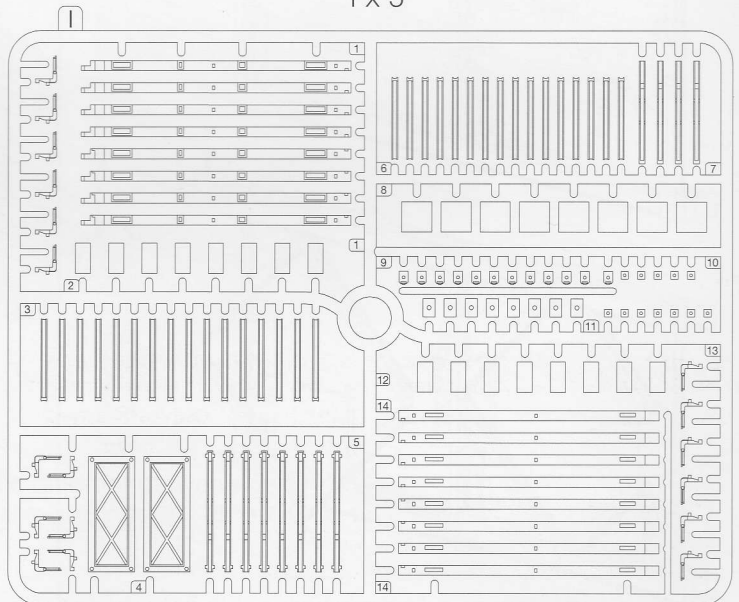
F x 1



GB x 2



I x 3



K x 3

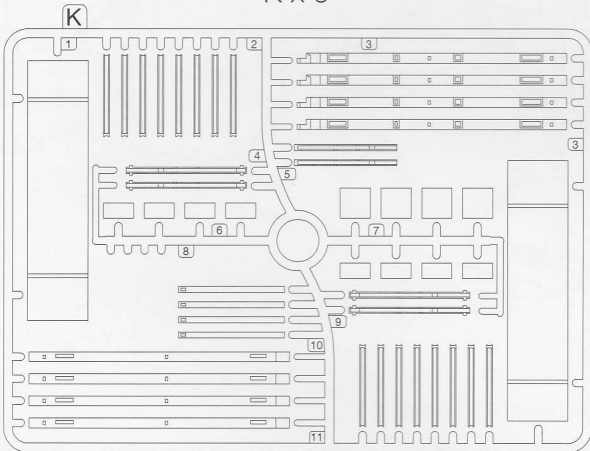
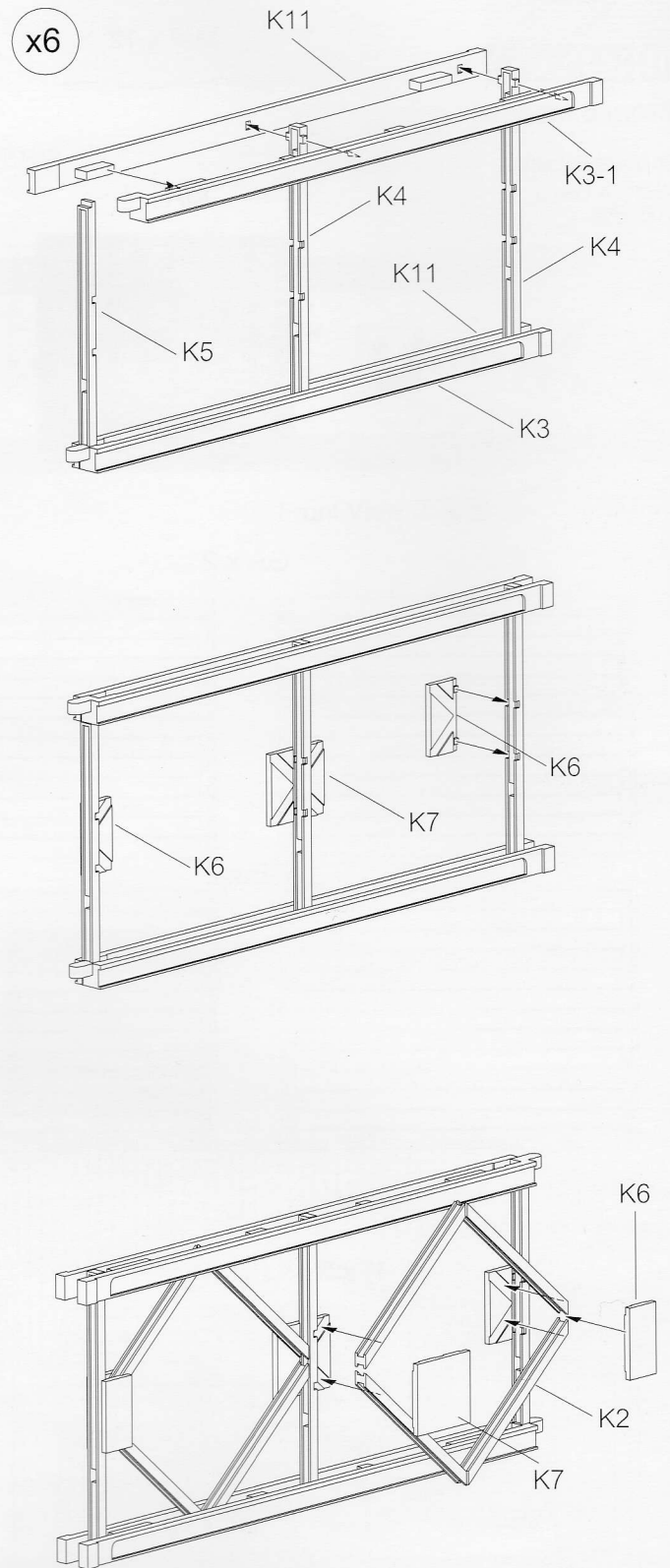
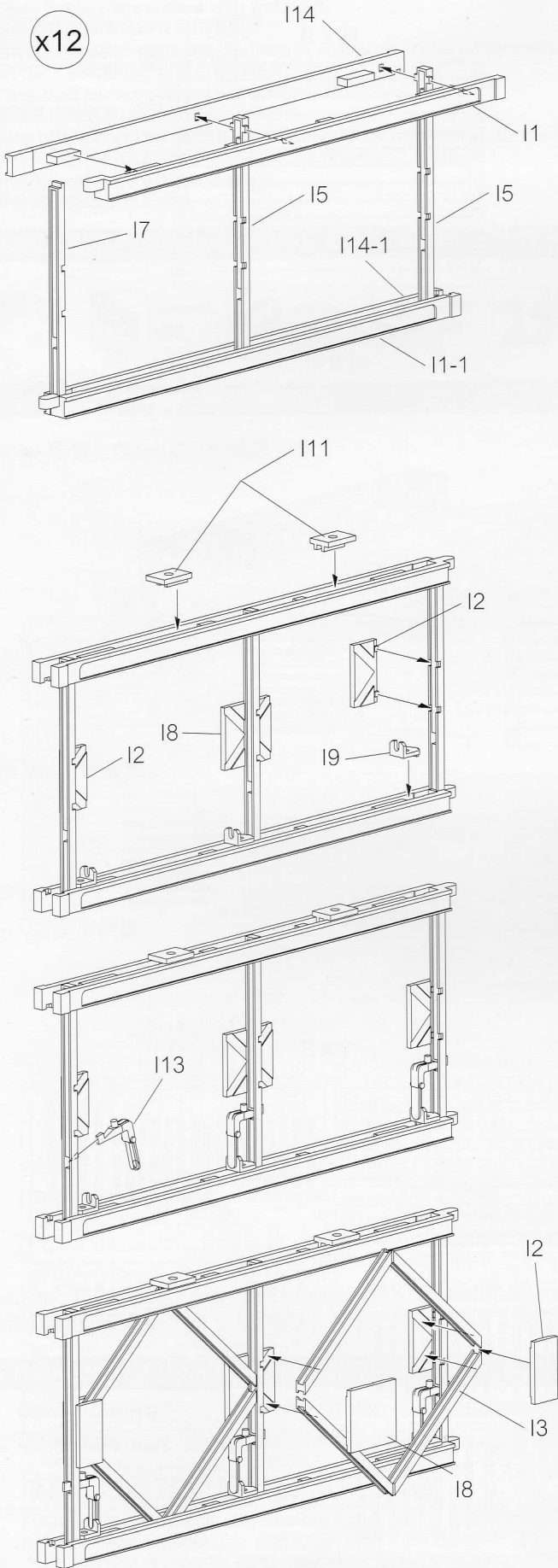
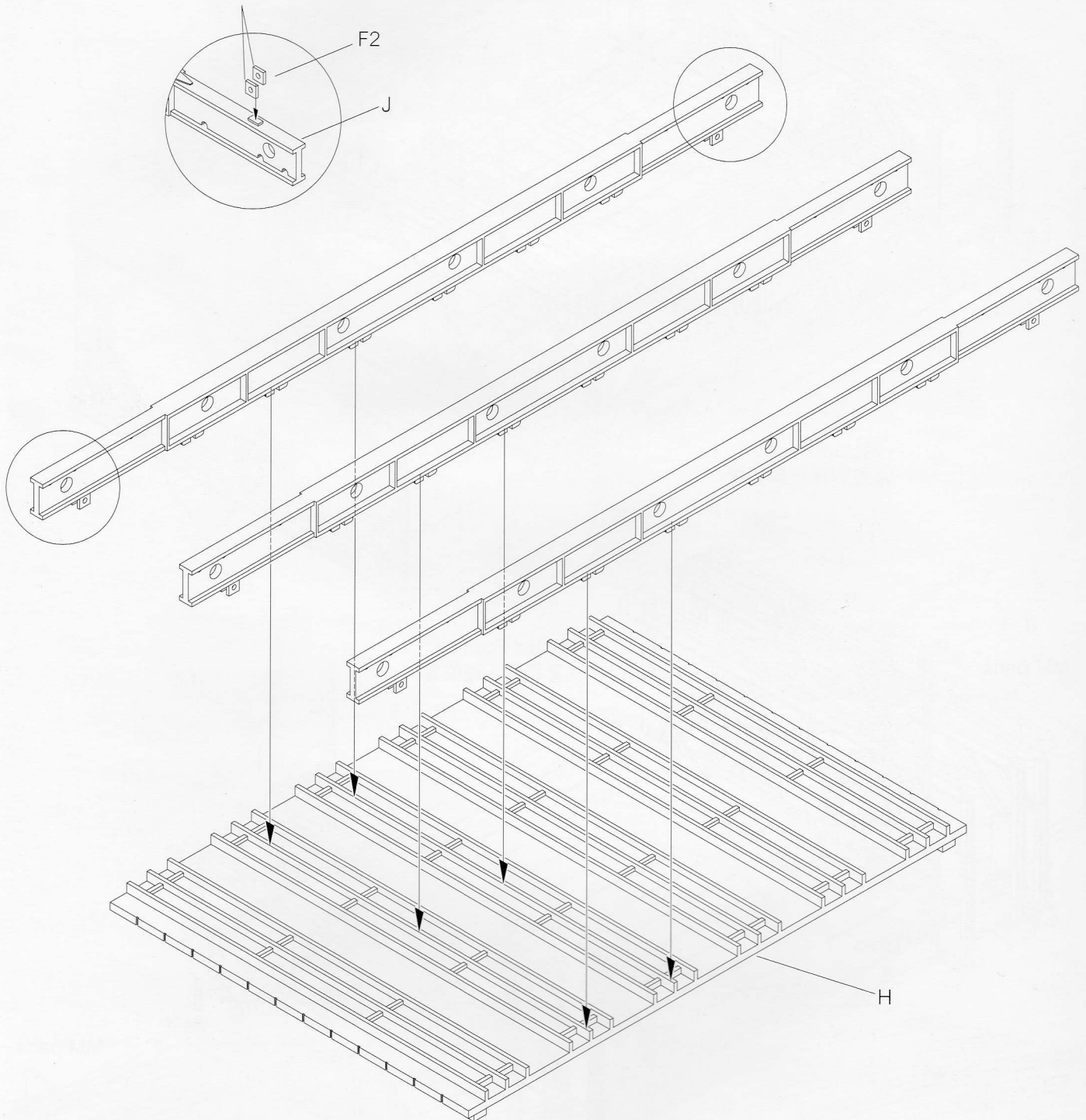


ILLUSTRATION 圖示說明：

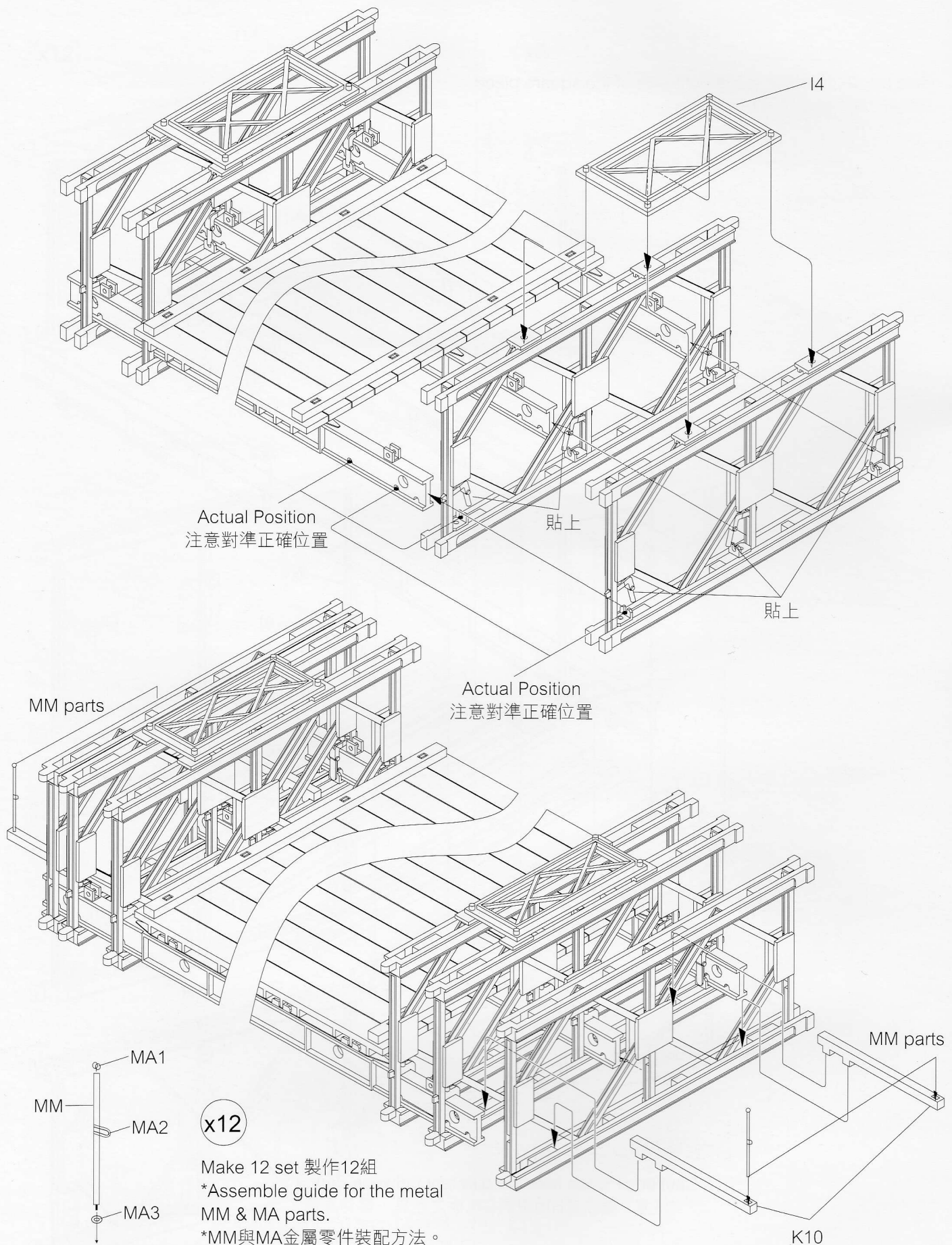


*Glue the #F2 parts at to the both side of the square piece.
*請將#F2零件裝在所示方塊兩側。



*Caution : Please note the different between Part H & G.
*注意：請注意H地板與G地板之差異，切勿弄錯。

ILLUSTRATION 圖示說明：



Actual Position
注意對準正確位置

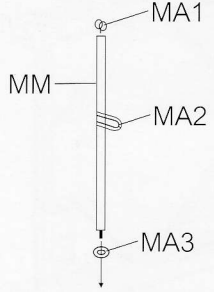
貼上

貼上

MM parts

Actual Position
注意對準正確位置

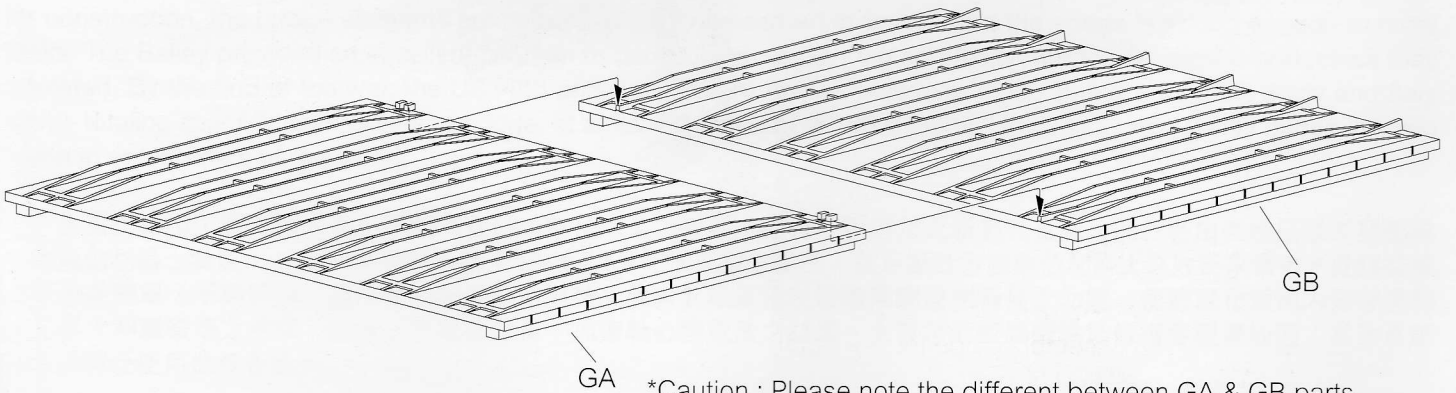
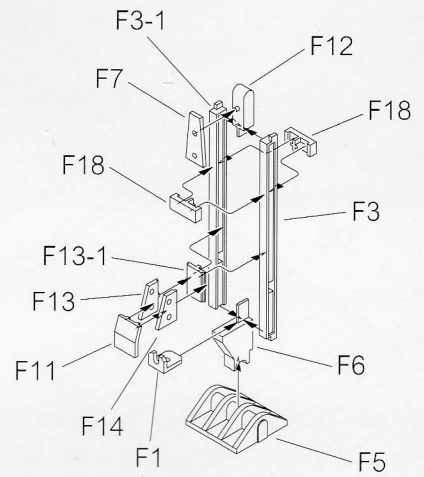
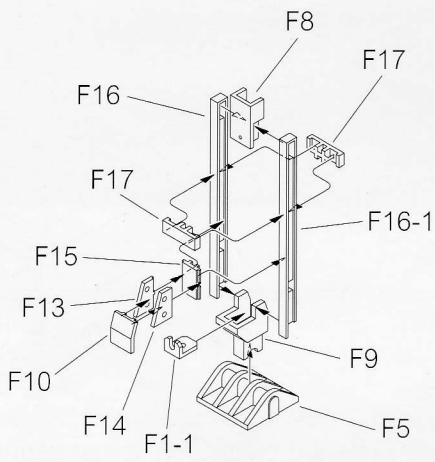
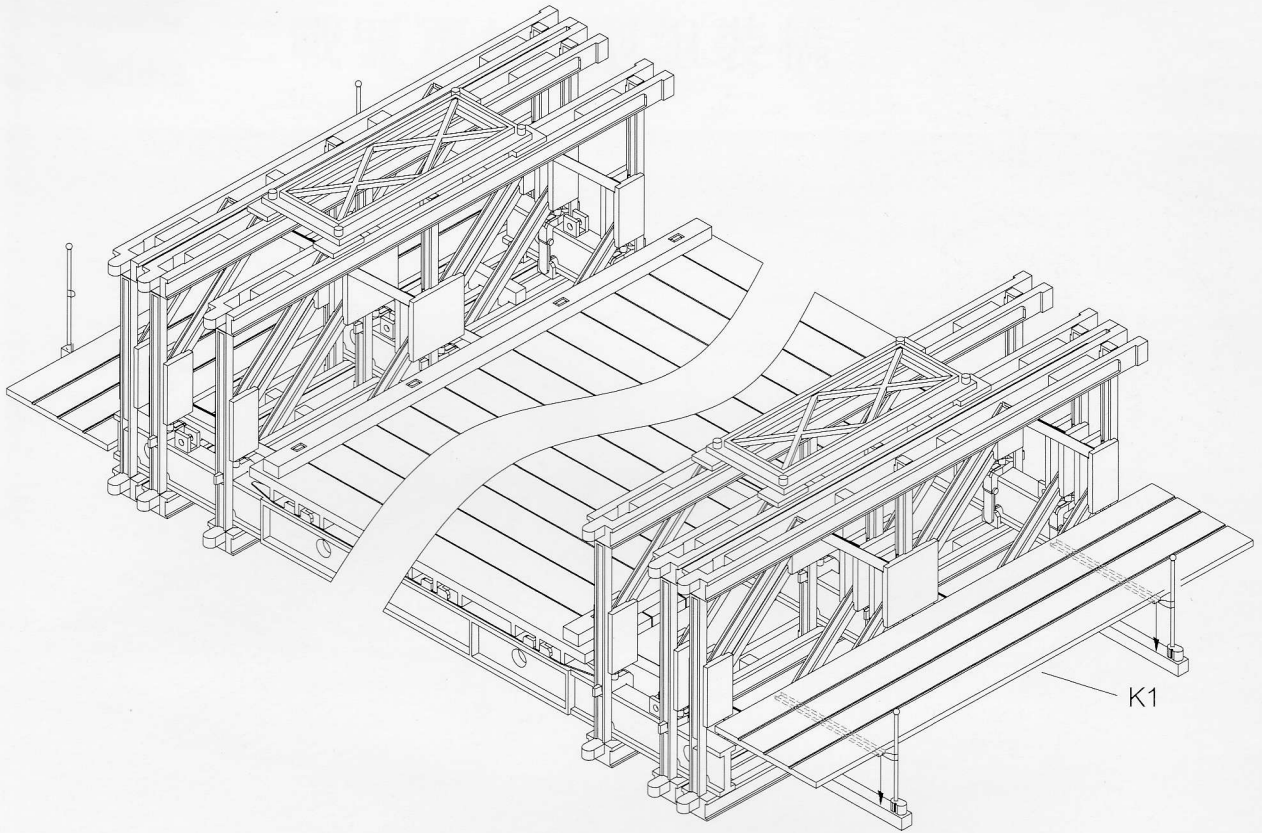
MM parts



x12

Make 12 set 製作12組
*Assemble guide for the metal MM & MA parts.
*MM與MA金屬零件裝配方法。

K10



*Caution : Please note the different between GA & GB parts.
*請注意零件GA與GB之差別。

ILLUSTRATION 圖示說明：

