

Part

S72-239

ELEMENTY FOTOTRAWIONE
DO MODELI PLASTIKOWYCH

Shvestov M-11

DETAIL SET FOR PLASTIC KIT

"Part" (0-42) 640-40-76

www.part.pl

1:72 scale detail set for various kits

UWAGA

Elementy fototrawione należy przyklejać klejami cyjanoakrylowymi. Pracę wykonywać w miejscu dobrze wentylowanym. Nie wdychać oparów kleju. Po skończonej pracy umyć ręce.

CAUTION

Photo-etched parts can only be glued with cyanoacrylate glue. Work in a well ventilated area. Do not inhale vapors since these can be harmful. Wash your hands after using.

ODCIAĆ
REMOVE



ZAGIAĆ
BEND

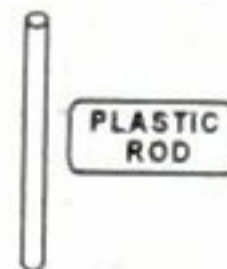
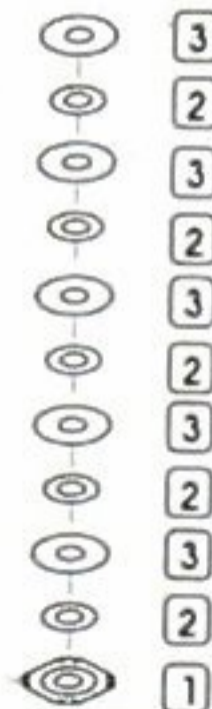
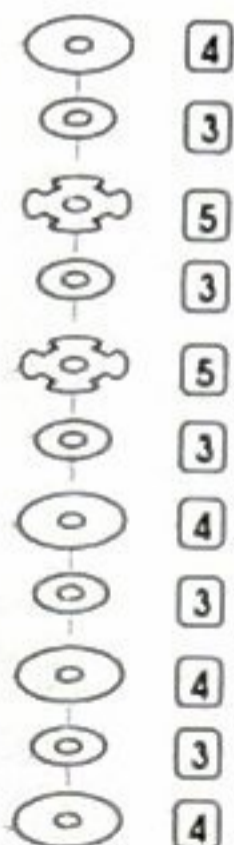
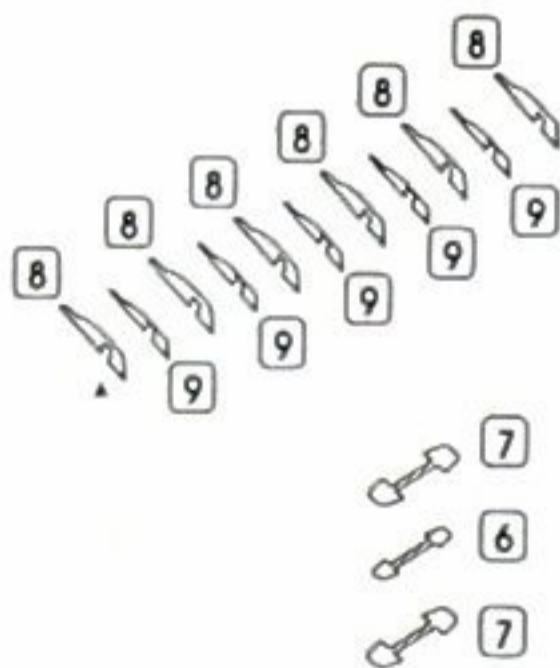


TŁOCZYĆ
PRESS

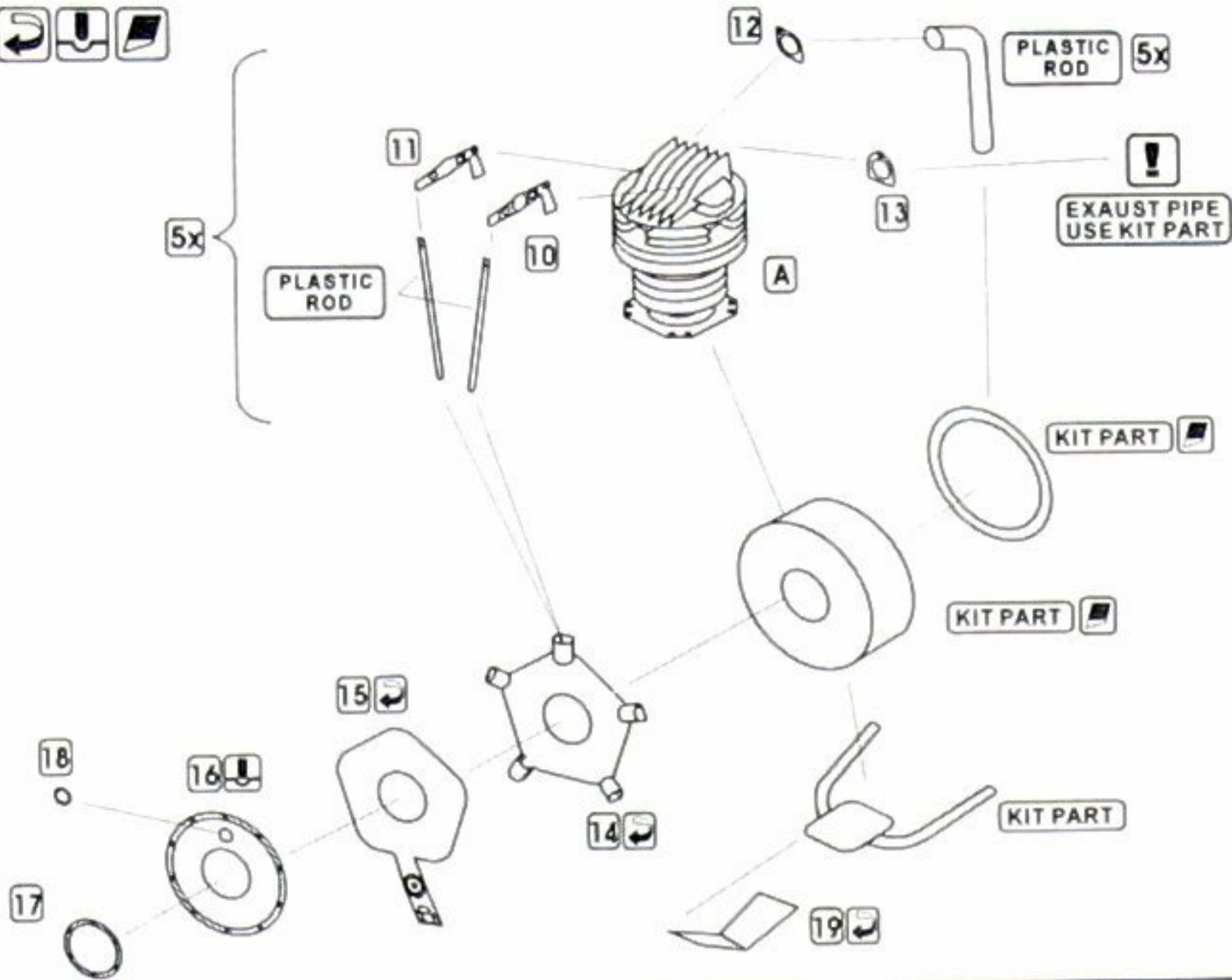


www.mojehobby.pl www.super-hobby.com

A 5x



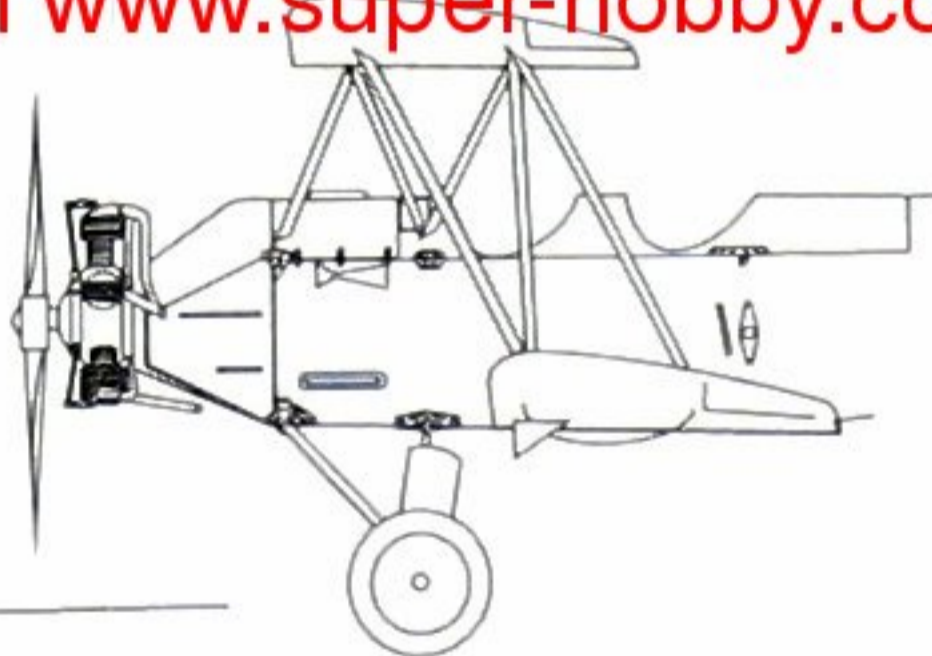
B



www.mojehobby.pl www.super-hobby.com

C PRZYKŁADY ZASTOSOWANIA
EXAMPLES OF USE

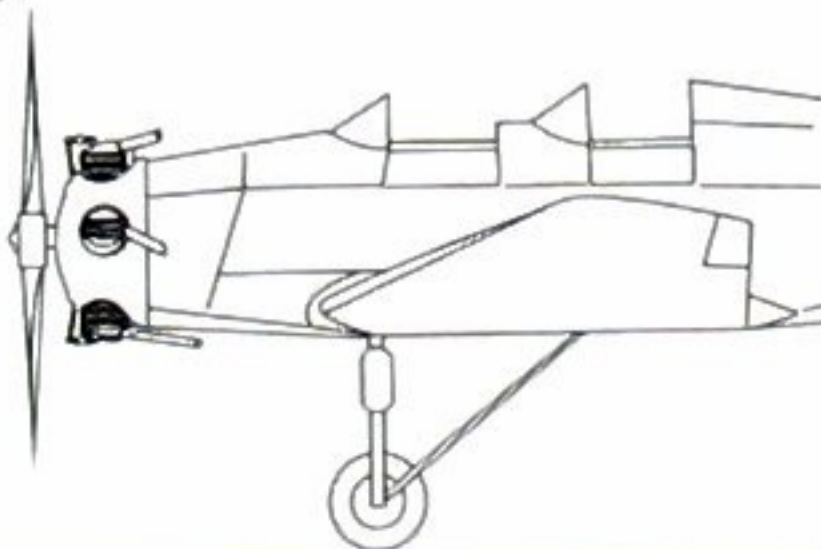
Polikarpov Po-2
KoPro kit

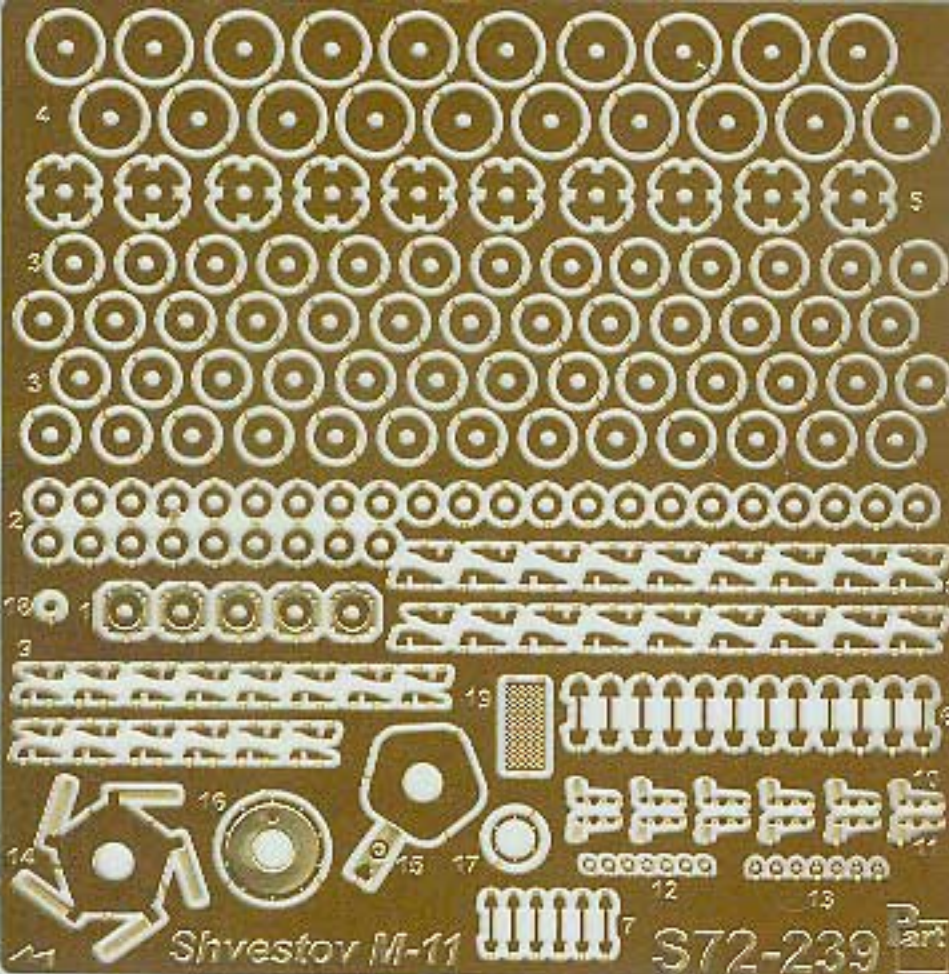


Yakovlev Yak-6
ZVEZDA kit



Yakovlev UT-2
A-Model kit





Shvestov M-11

572-239

Part