

This Detail set is manufactured from photo - etched brass sheet and is for the Revell 1/72 scale model kit.

Etched brass should be thoroughly cleaned by gently wiping with a solvent such as White Spirit and primed for painting.

To separate parts, support fret on a firm surface, (i.e., a small sheet of glass or a plain ceramic tile) and cut as near to the part as possible using a sharp blade.

To fold part use Airwaves Folding Tool AM022 for a good and even fold. For fixing parts, use Cyanoacrylate Adhesive (Superglue) or Epoxy resin. To remove the green photo resist film from the surface of the metal, a caustic soda solution is recommended, though extreme care should be taken when handling.

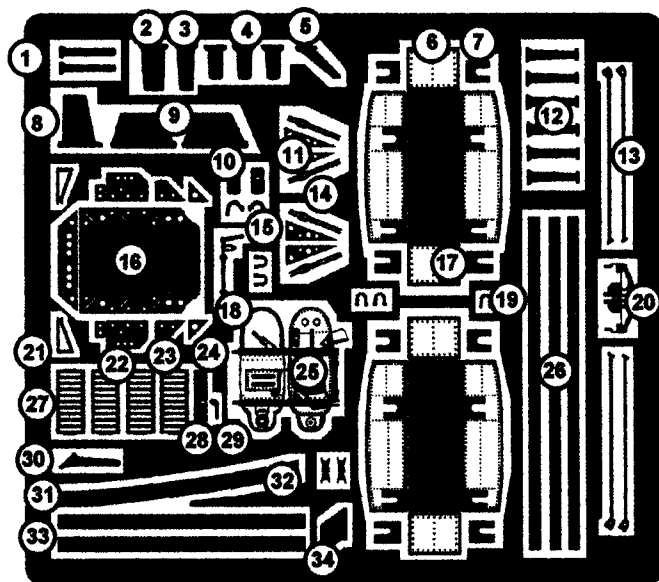
Manufactured for and by:-

E.D. Models, 64 Stratford Road, Shirley,

Solihull, B90 3LP, England.

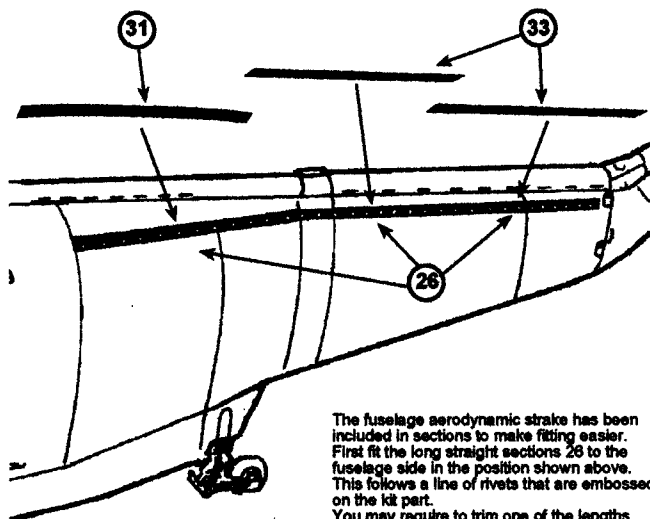
Telephone (44)- 0121-744-7488 Fax (44)- 0121-733-2591

For further helpful hints to using etched brass and for full details of the extensive Airwaves range, get a copy of the latest Airwaves catalogue.



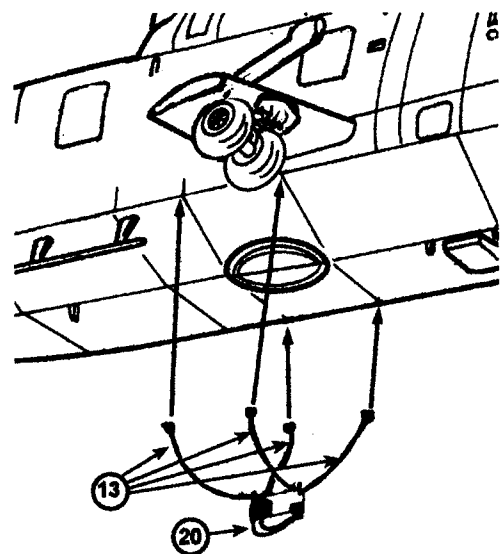
REAR FUSELAGE STRAKE ASSEMBLY

The British variants of the Sea King have been modified with an aerodynamic strake on the left side of the rear fuselage. To modify the kit, fit the parts provided as shown below.



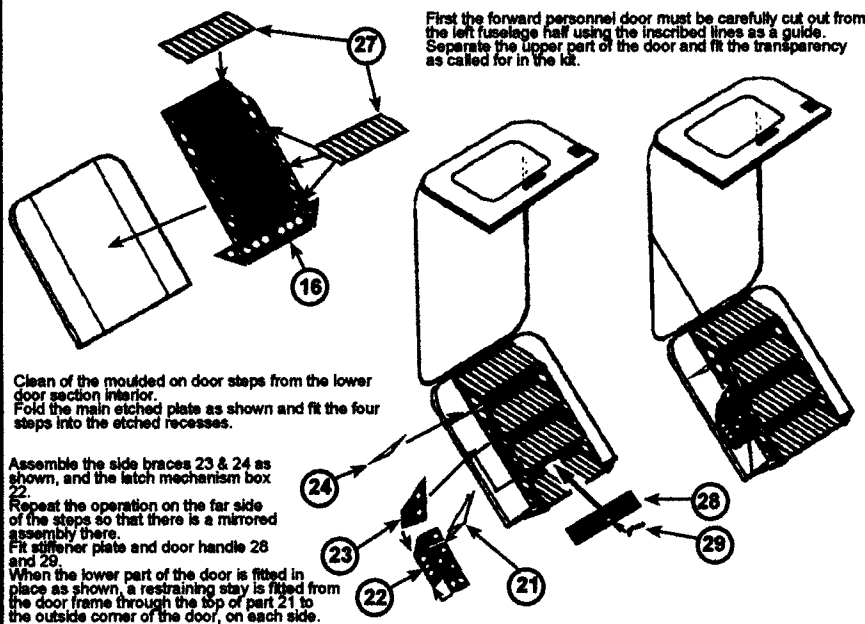
The fuselage aerodynamic strake has been included in the kit to make fitting easier. First fit the long straight sections 26 to the fuselage side in the position shown above. This follows a line of rivets that are embossed on the kit part. You may require to trim one of the lengths to fit. Next fit etched part 31 at 90° and on top of etched part 26 forward section. This is contoured to fit the curve of the fuselage. Next fit etched sections 33 at 90° and on top of the remaining sections of etched part 26.

CARGO HOOK & ATTACHMENT CABLES



Fold etched part 20 along the centre line so that the two halves join back to back and give etched detail on both sides. Fit the hook body to the attachment cables, etched part 13, and gently curve the cables up and away from the hook as shown above. Fit the ends of the cables to the bottom of the fuselage sides at the engraved lines on the kit. When set in position push the hook body up to the fuselage, giving the impression that the attachment cables are sagging.

FORWARD PERSONNEL DOOR ASSEMBLY



First the forward personnel door must be carefully cut out from the left fuselage half using the inscribed lines as a guide. Separate the upper part of the door and fit the transparency as called for in the kit.

Clean off the moulded on door steps from the lower door section interior. Fold the main etched plate as shown and fit the four steps into the etched recesses.

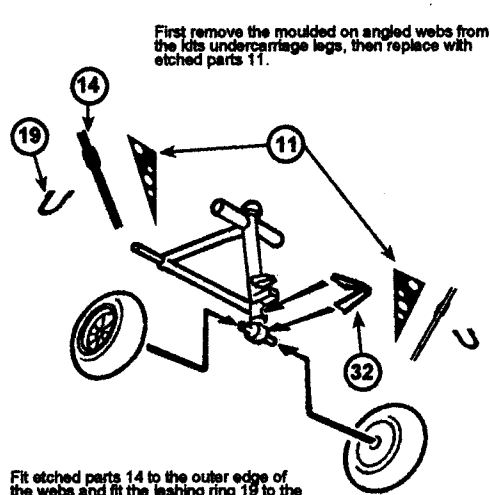
Assemble the side braces 23 & 24 as shown, and the latch mechanism box 22.

Repeat the operation on the far side of the steps so that there is a mirrored assembly there.

Fit stiffener plate and door handle 28 and 29.

When the lower part of the door is fitted in place as shown, a restraining stay is fitted from the door frame through the top of part 21 to the outside corner of the door, on each side.

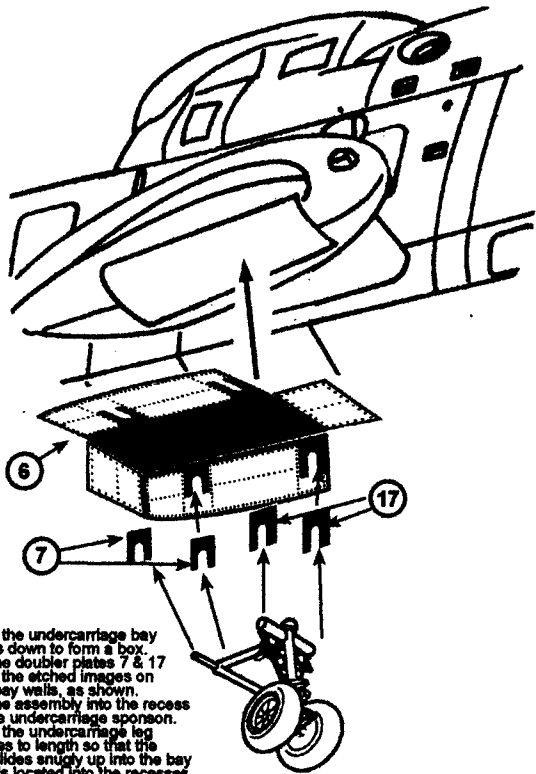
U/C LEG WEB REPLACEMENT



First remove the moulded on angled webs from the kit's undercarriage legs, then replace with etched parts 11.

Fit etched parts 14 to the outer edge of the webs and fit the lashing ring 19 to the raised area at the upper end. The torque links provided in the kit may be replaced by etched parts 32 if it is desired.

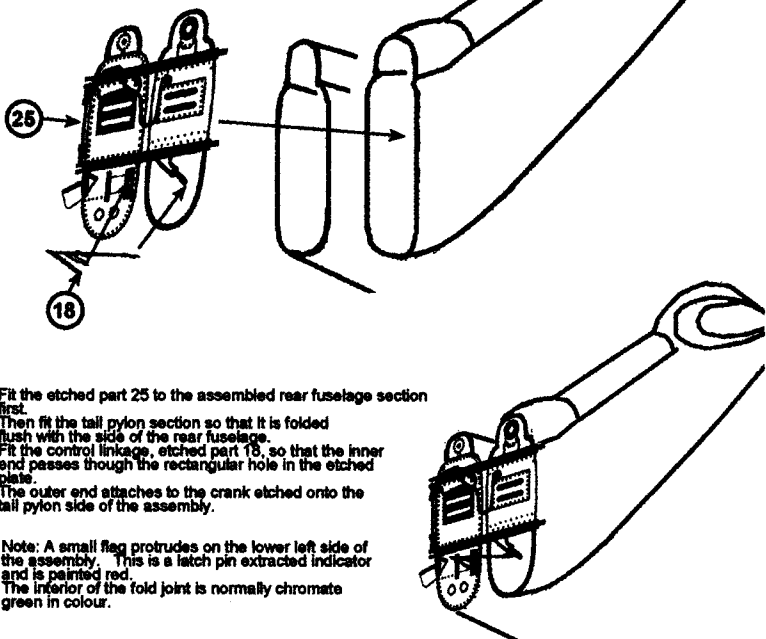
UNDERCARRIAGE BAY ASSEMBLY



Fold the undercarriage bay sides down to form a box. Fit the doubler plates 7 & 17 over the etched images on the bay walls, as shown. Fit the assembly into the recess in the undercarriage sponson. Trim the undercarriage leg hinges to length so that the leg slides snugly up into the bay and is located into the recesses in the doubler plates.

TAIL FOLD JOINT ASSEMBLY

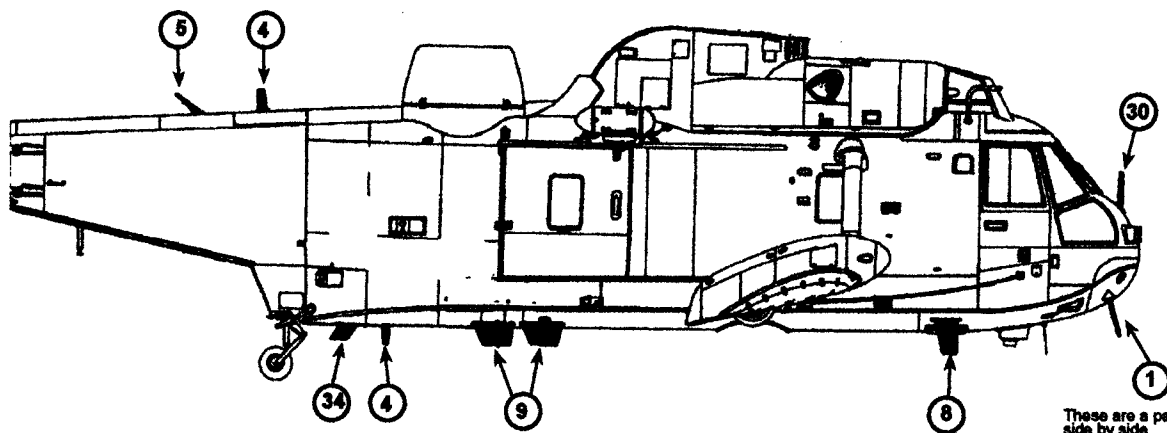
To model the kit with the tail pylon folded the tail section must first be separated from the rear fuselage. This is done by carefully cutting down the engraved lines on the fuselage halves, that run down through the moulded on hinges. Do not remove these raised details as the etched parts will fit up to them.



Fit the etched part 25 to the assembled rear fuselage section first. Then fit the tail pylon section so that it is folded flush with the side of the rear fuselage. Fit the control linkage, etched part 18, so that the inner end passes through the rectangular hole in the etched plate. The outer end attaches to the crank etched onto the tail pylon side of the assembly.

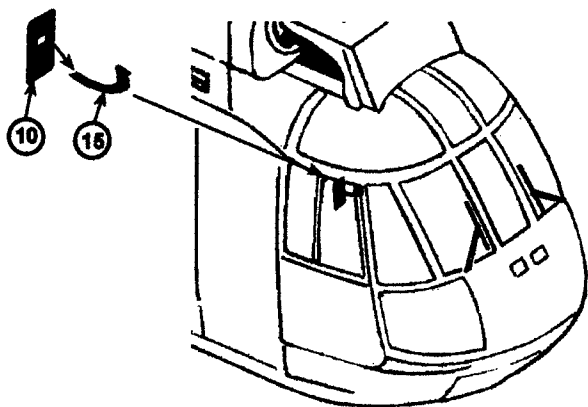
Note: A small flag protrudes on the lower left side of the assembly. This is a latch pin extracted indicator and is painted red. The interior of the fold joint is normally chromate green in colour.

AERIAL POSITIONS OF SEA KING HAS 5 & HAS 6



These are a pair positioned side by side

REAR VIEW MIRROR LOCATION



The pilots rear view mirrors are located on both sides of the fuselage in the position shown.

ADDITIONAL INFORMATION

1. The HF Aerial masts which are kit parts 74 and 75 can be replaced by etched parts 12. These can be doubled if it is felt that they are too thin, by cementing two aerials back to back with superglue.
2. The colour scheme of the interior or the wheel wells on early Sea Kings was white, but from 1982 onwards they were painted the same colour as the rest of the fuselage. This applies to the undercarriage legs also.
3. Publications that are recommended for further information on detailing the Sea King kits, are :- SEA KING by Patrick Allen published by Airline. ISBN 1-85310-324-1. Westland Sea King in detail by Spacek, Martinec, Spurny, Kedzierski and Koran. This is a Wings and Wheels Publication.