

Falcon Scale Models

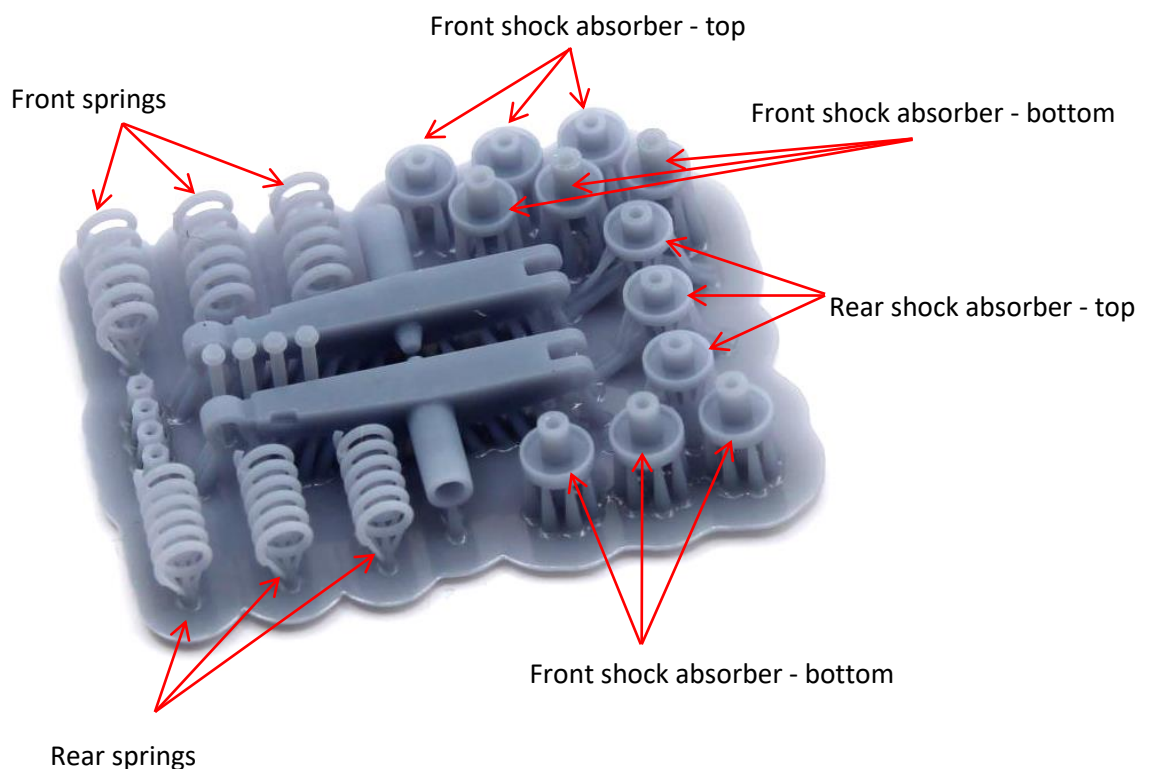


Lotus type 79 - front and rear suspension set (Tamiya 20060)

Catalog no.: FSM C8

Installation guide

Cut all parts with sharp cutters like Tamiya 74123. Do not break off parts. Remember that bottom and top parts of the shock absorber are not flat and have installation sections like in the base kit.



Front suspension

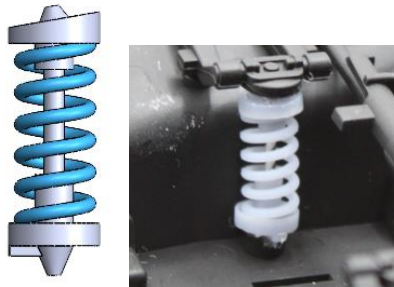
1. Cut the metal rod: 2x 6.5-7mm and smooth cutting edges.
2. Correct metal rod installation holes in top and bottom sections of the shock absorber with a 0.8mm drill.
3. Using CA glue connect top section of the shock absorber with the metal rod.



4. Insert the spring (check if the spring diameter matches the diameter of the top section).

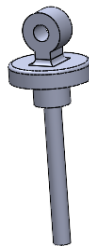
5. Make a dry fit first to check if the metal rod length is correct when inserted into the bottom section of the shock absorber (as reference use base kit part or temporary install the shock absorber in the car).

Insert bottom part of the shock absorber onto the metal rod and secure it using Micro Kristal Klear glue or similar and position the bottom section in reference to the top one using the part E31 from the base kit. Check once again the height of your part with the reference one. Using CA glue is not recommended as the top and bottom sections of the shock absorber have to be positioned correctly.



Rear suspension

1. Cut the metal rod: 2x 6mm and smooth cutting edges.
2. Correct metal rod installation holes in top and bottom sections of the shock absorber with a 0.8mm drill.
3. Using CA glue connect top section of the shock absorber with the metal rod.



4. Using screw, connect the shock absorber with the swingarm and secure it from the back side with the nut. The screw head should be on the front side of the car.

Remarks:

Do not glue the screw to the other parts as the shock absorber should rotate about the screw axis.

The screw length should be reduced at step 14 of the base kit manual when installing the E32. The E32 does not connect with the screw on the right side of the car (for reference check E32 installation holes in E11 and E10).

5. Insert the spring (check if the spring diameter matches the diameter of the top section).
6. Make a dry fit first to check if the metal rod length is correct when inserted into the bottom section of the shock absorber (as reference use base kit part or temporary install the shock absorber in the car).

Insert bottom part of the shock absorber onto the metal rod and secure it using Micro Kristal Klear glue or similar and position the bottom section in reference to the top one using the part E10 or E11 from the base kit. Check once again the height of your part with the reference one.

Using CA glue is not recommended as the top and bottom sections of the shock absorber have to be positioned correctly.

