

eduard
MASK

Spitfire Mk.XVI 1/48

The die-cut mask for accurate canopy frame painting of the

Italeri

1/48 KIT

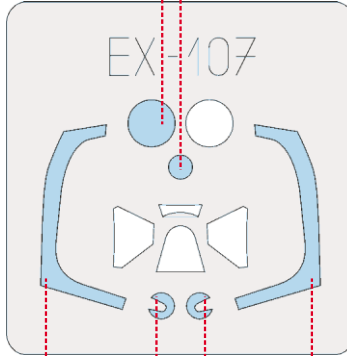
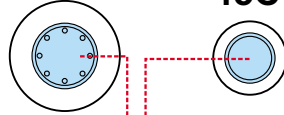
EX 107

 - LIQUID MASK
MASCOL

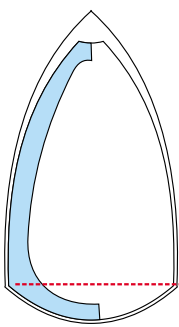


38B 2pcs

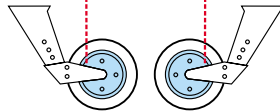
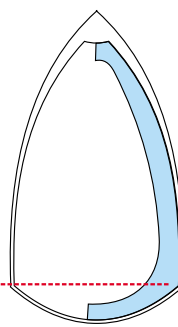
45C



2C



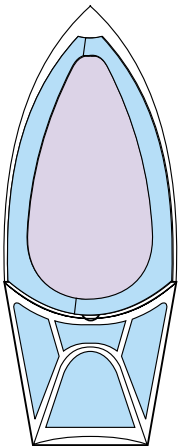
2C



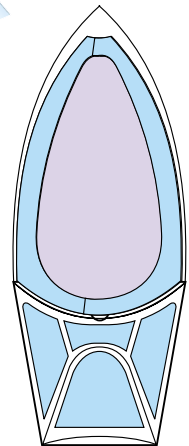
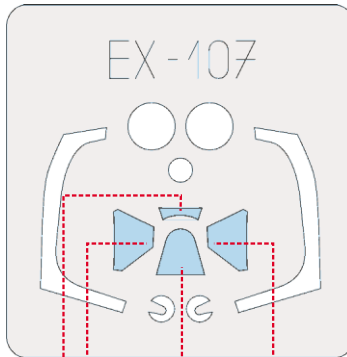
43B



1.) INTERIOR COLOR



2.) CAMOUFLAGE COLOR



1C

