

# USAAF B-24J



The B-24 ended WW2 as historically the most produced aircraft of all time and the most produced American military aircraft at over 18,400 units. Developed as a long-range heavy bomber just prior to the United States entering the war, the B-24 was capable of delivering as much as 12,800 lbs. The maximum range with a reduced bomb load was over 2,000 miles. The B-24J was a mid-production B-24 that served world-wide in every theater of operation from Asia to Europe.

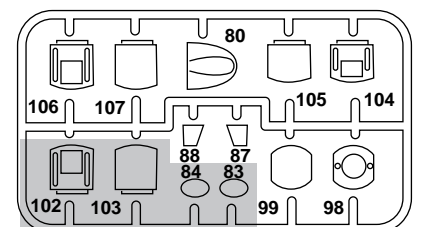
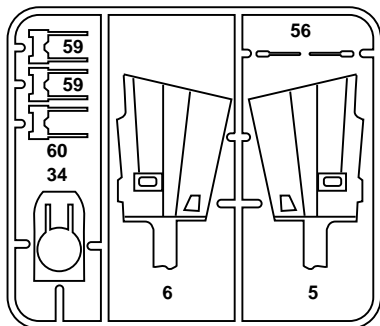
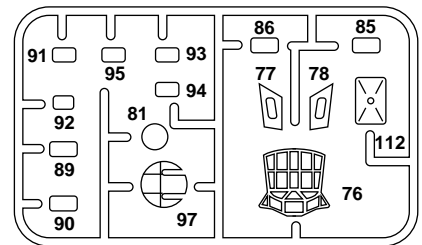
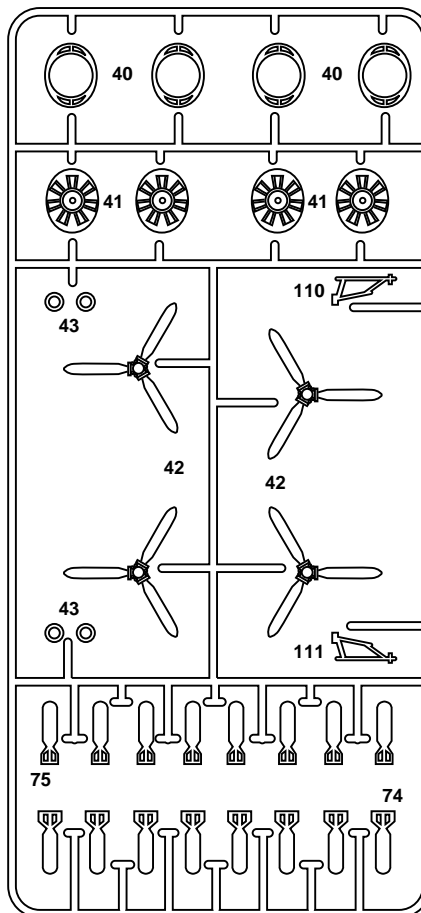
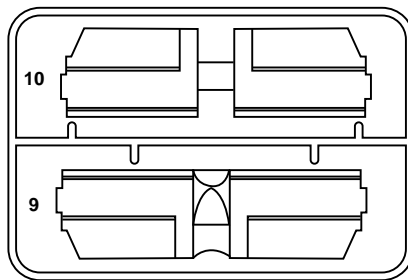
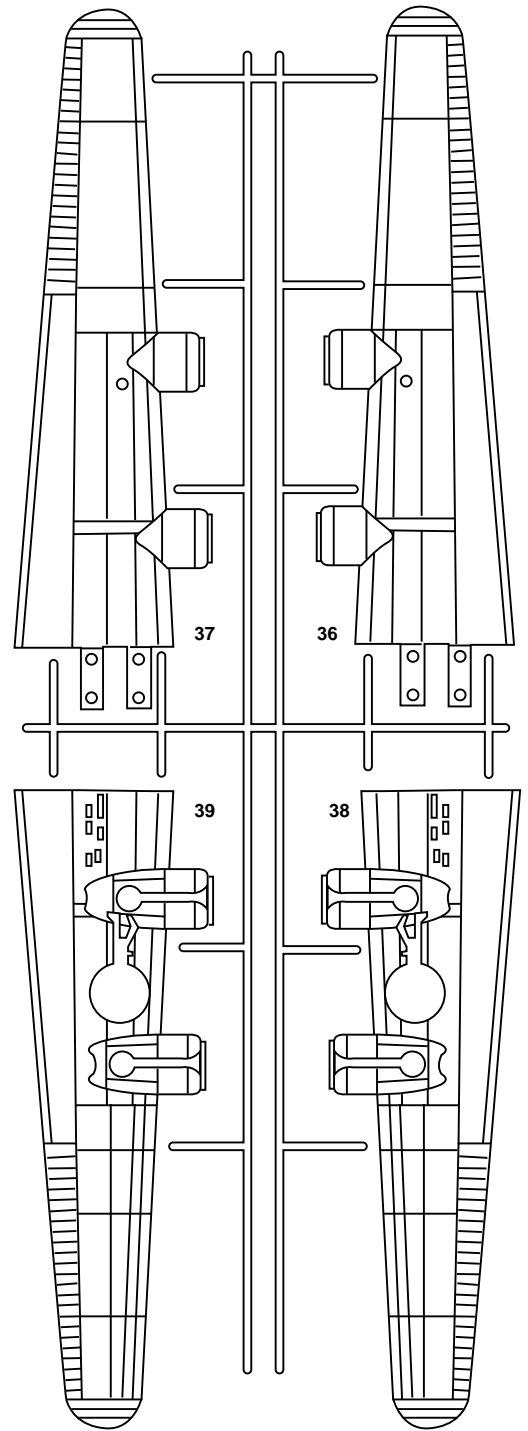
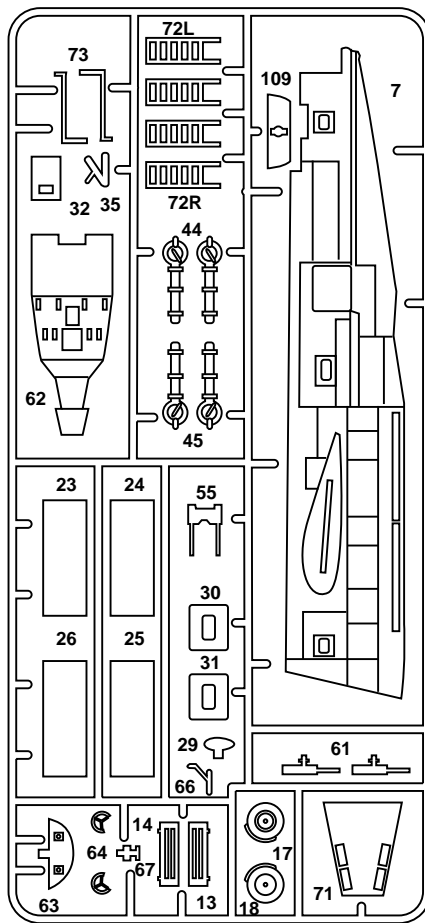
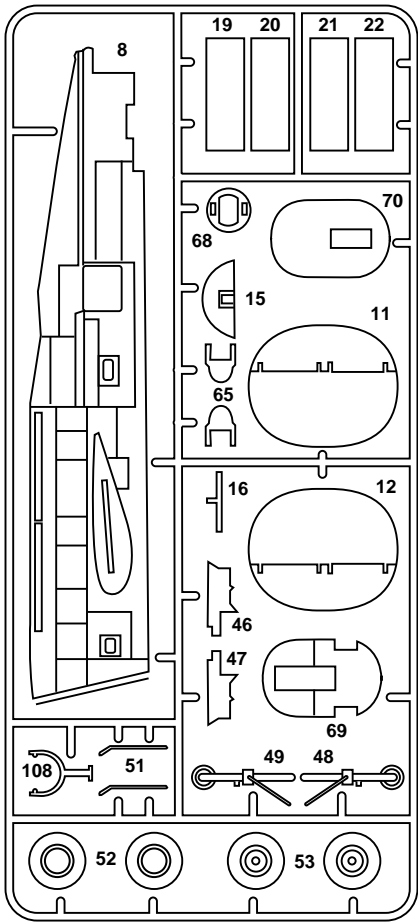
This new Minicraft kit features 2 painting and marking options representing 2 aircraft based in England during WW2. The new markings represent one natural metal aircraft named "Hare Power" from the 852<sup>nd</sup> BS 491<sup>st</sup> BG in autumn 1944 and one a olive drab over gray aircraft from the 328<sup>th</sup> BS 2<sup>nd</sup> BD March 1943 both assigned as units of famous United States Army 8<sup>th</sup> Air Force.

Marking included in this kit are:

"Hare Power" 852<sup>nd</sup> BS, 491<sup>st</sup> BG, England, autumn 1944  
328<sup>th</sup> BS, 2<sup>nd</sup> BD, England, March 1943

Minicraft Models, 1501 Commerce Drive, Elgin IL 60123 USA  
[www.minicraftmodels.com](http://www.minicraftmodels.com)

# PARTS LOCATING DIAGRAM



Parts shown in Gray are not for use



Cement  
Coller  
Kleben  
Pegar  
Incollare  
Colar  
Kleven



DO NOT Cement  
Ne pas Coller  
Nicht Kleben  
No Pegar  
Non Incollare  
Nao Colar  
Niet Kleven



Cut away  
Couper  
Scheiden  
Cortar  
Tagliere  
Cortar  
Snijden



Optional parts  
Choix  
Auswahlmöglichkeit  
Eleccion  
Scelta  
Opaco  
Keuze



Repeat operation  
RZpeeter l' opZration  
Vorgang wiederholen  
Repitir la operacion  
Ripetere  
Repitir a operacao  
Herhalen

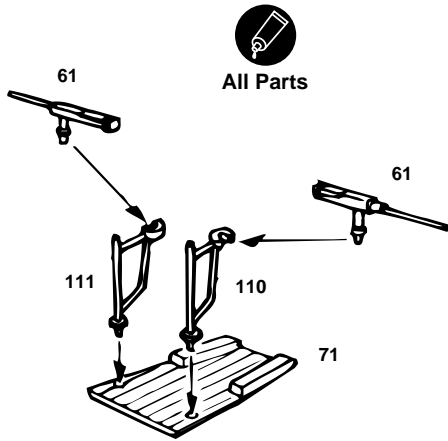


Symmetrical assembly



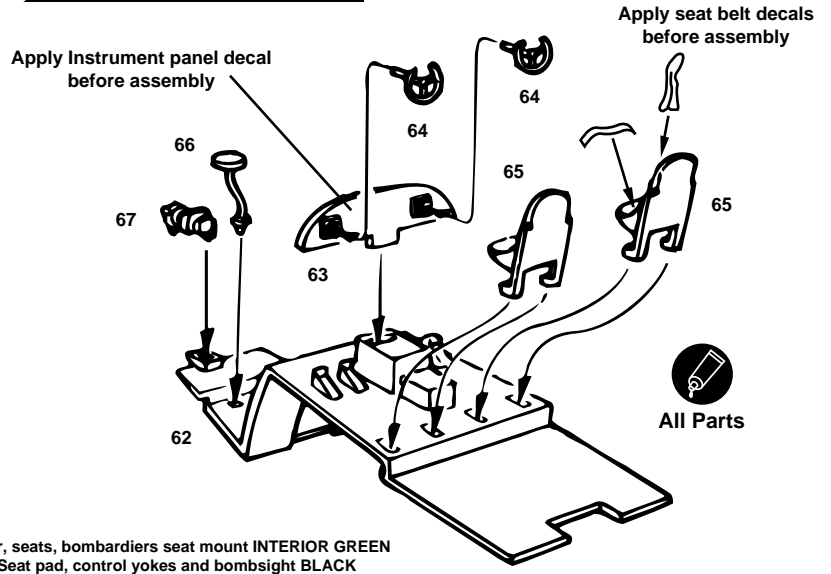
Drill hole

# 1 WAIST GUNS

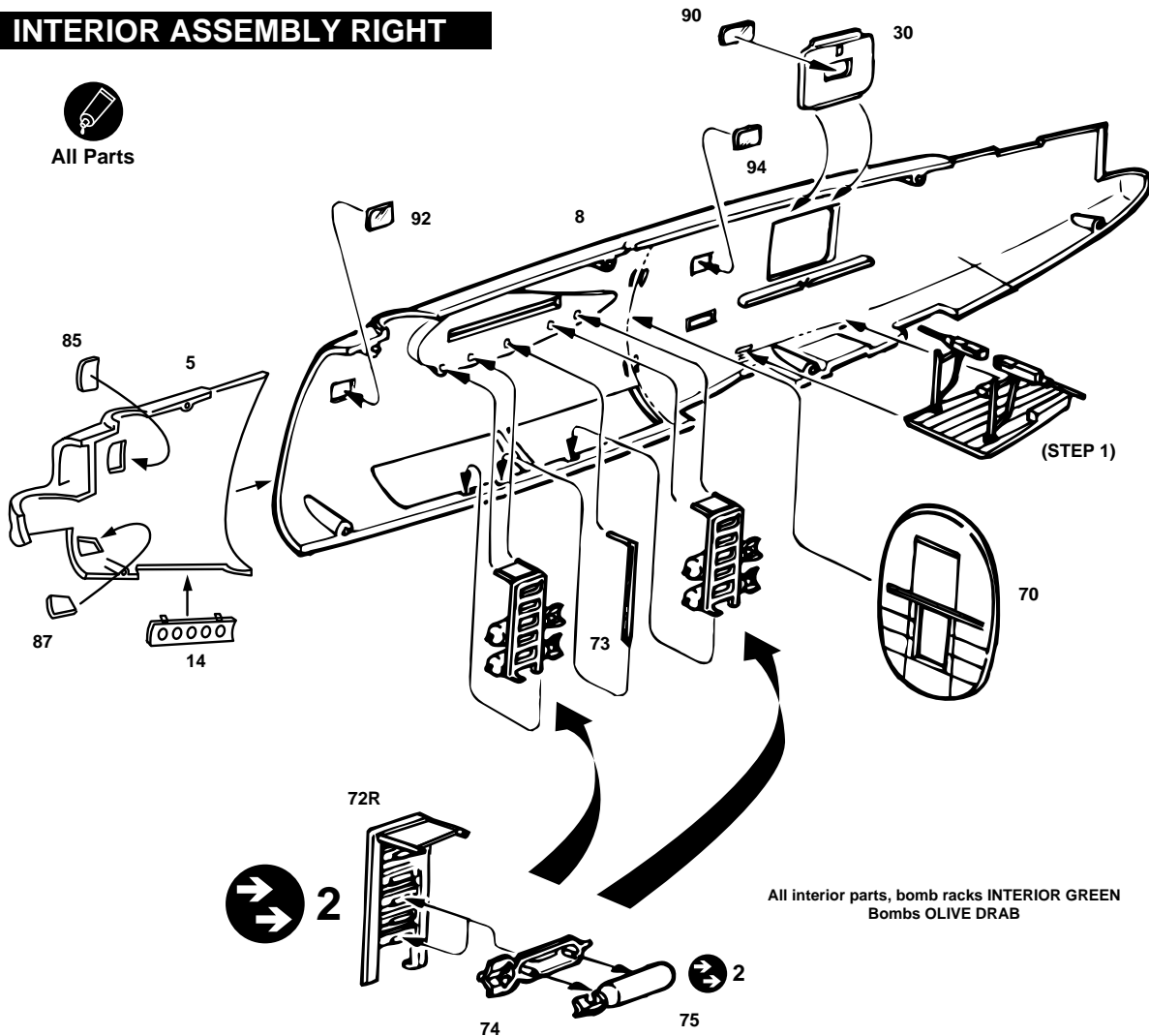


Floor WOOD TAN  
Gun mounts INTERIOR GREEN  
Guns FLAT BLACK

# 2 FLIGHT DECK



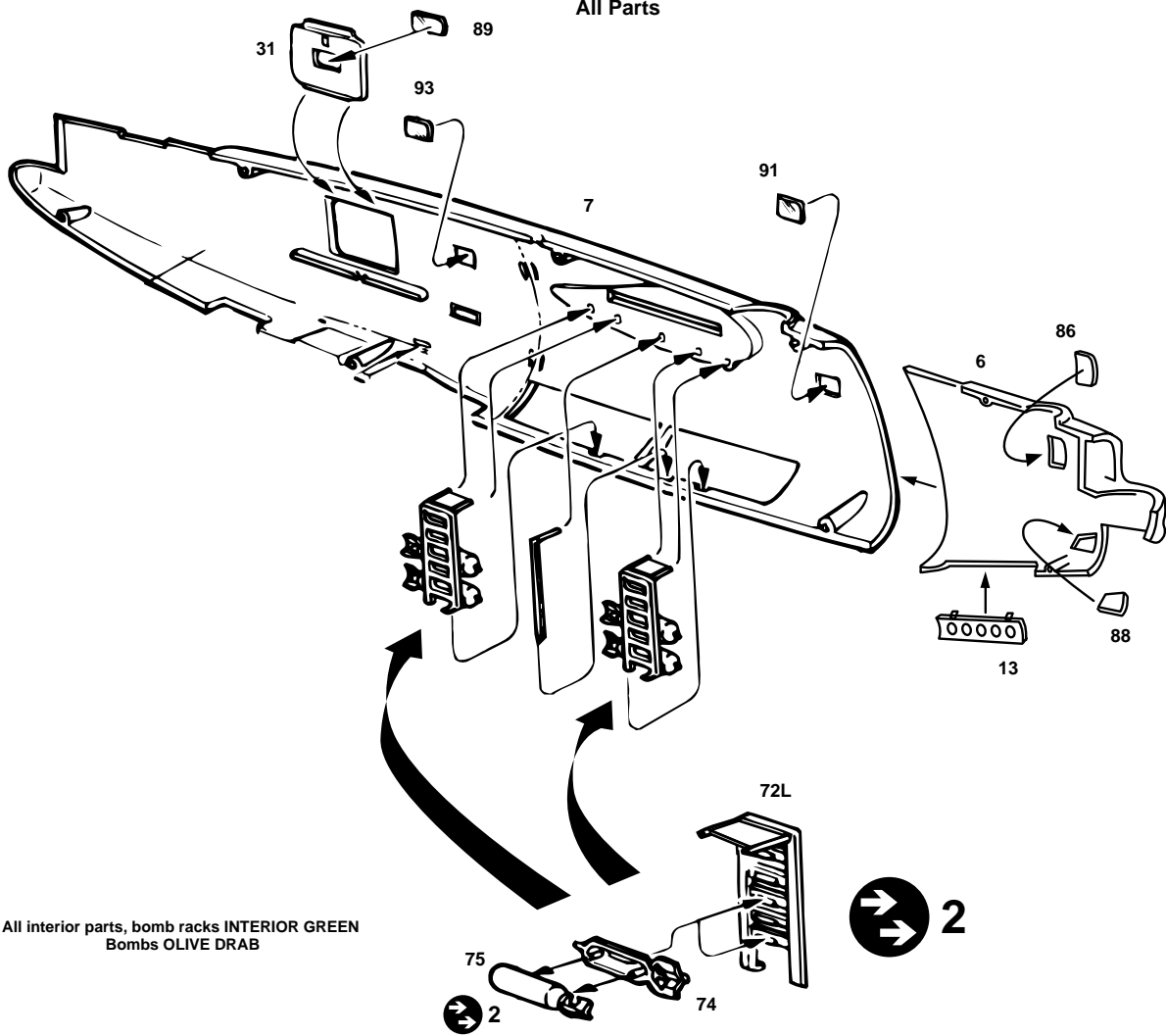
# 3 INTERIOR ASSEMBLY RIGHT



# 4 INTERIOR ASSEMBLY LEFT



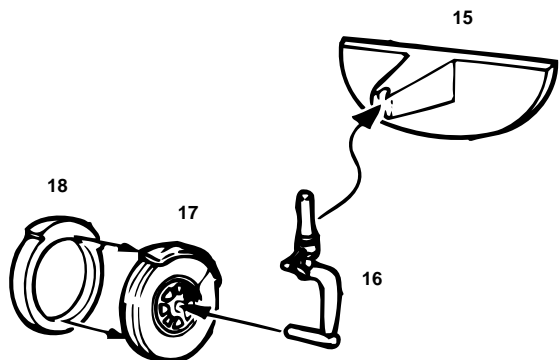
All Parts



All interior parts, bomb racks INTERIOR GREEN  
Bombs OLIVE DRAB

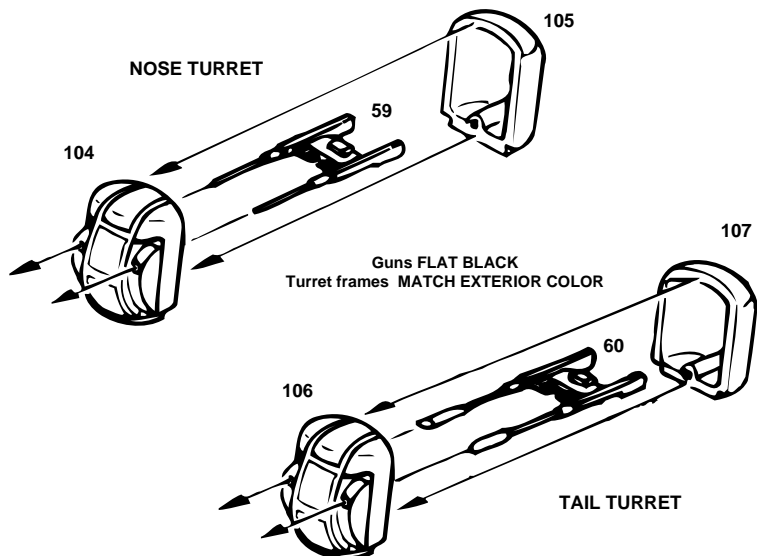


# 5 NOSEWHEEL ASSEMBLY



Bulkhead INTERIOR GREEN  
Strut, mudguard and wheel hubs ALUMINUM  
Tire FLAT BLACK-GRAY

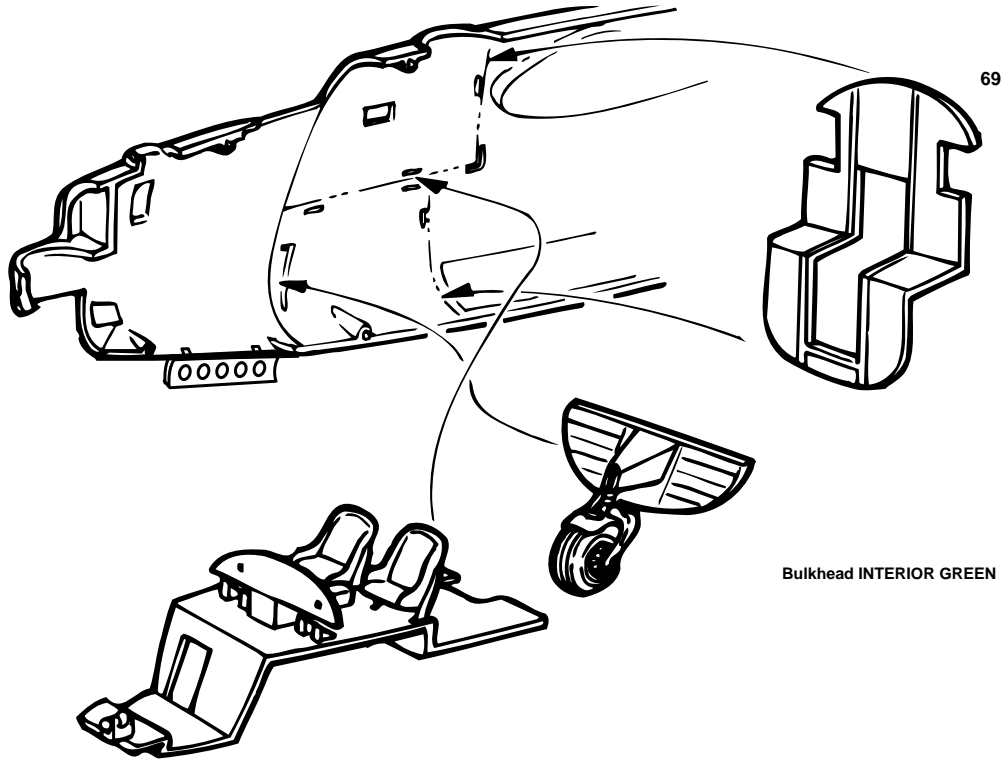
# 6 NOSE AND TAIL TURRETS



# 7 COCKPIT INSTALLATION



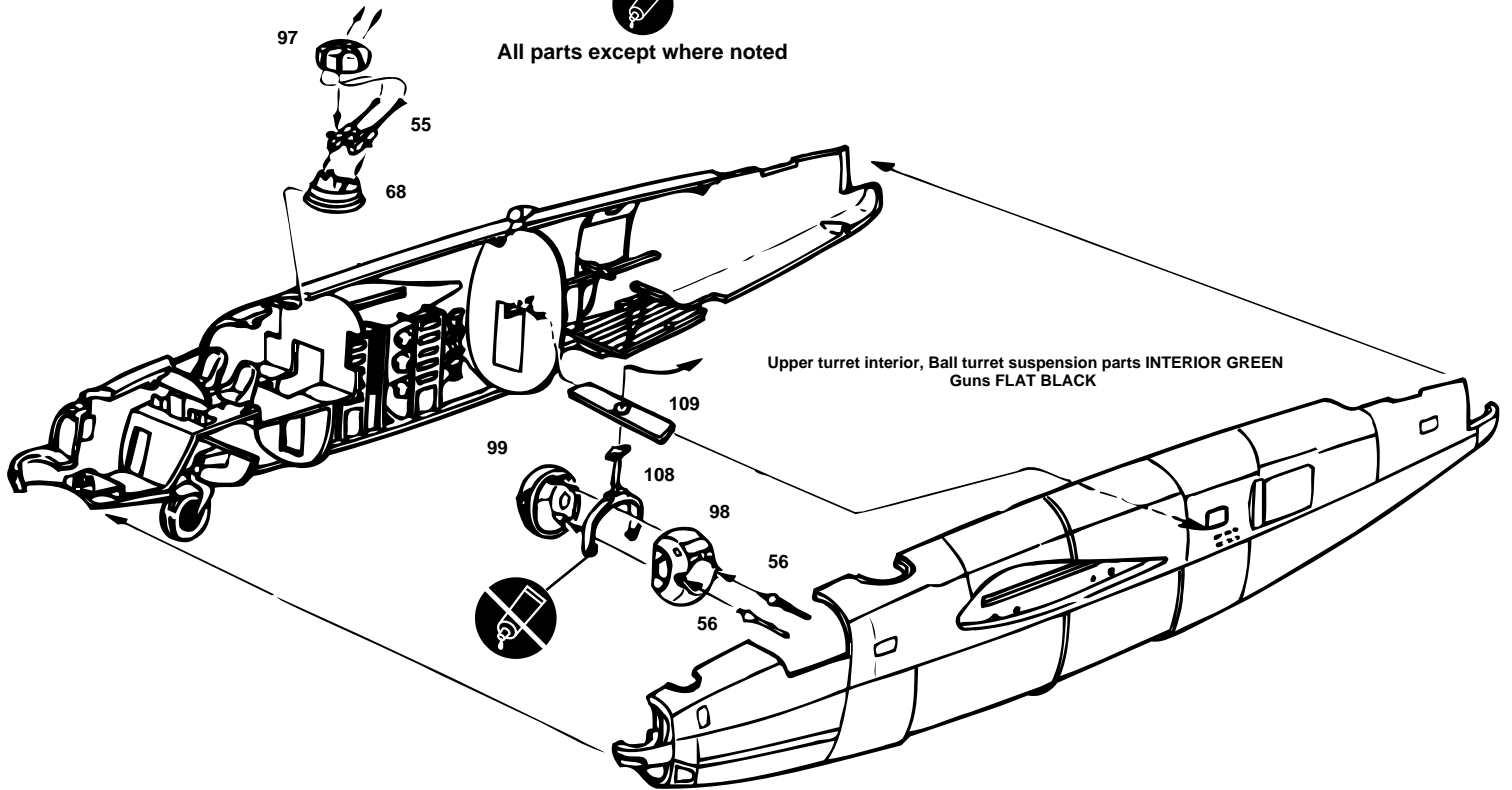
All Parts



# 8 MAIN FUSELAGE ASSEMBLY

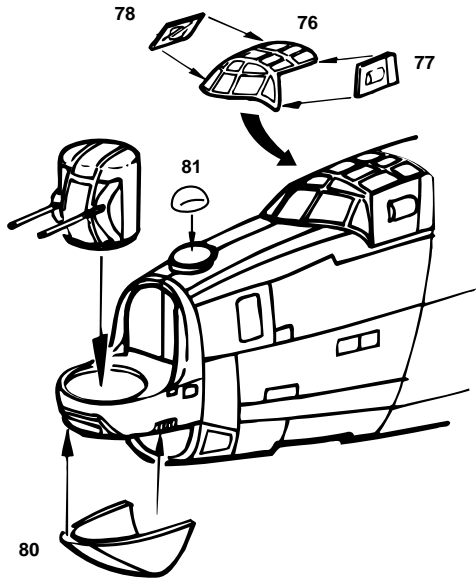


All parts except where noted



**9 FORWARD FUSELAGE ASSEMBLY**

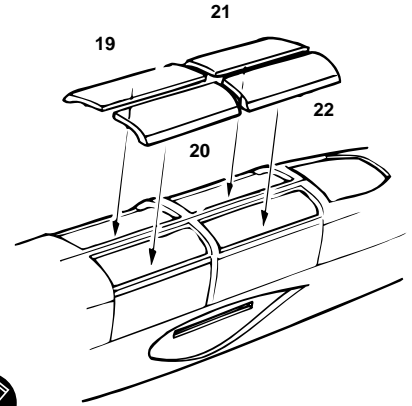
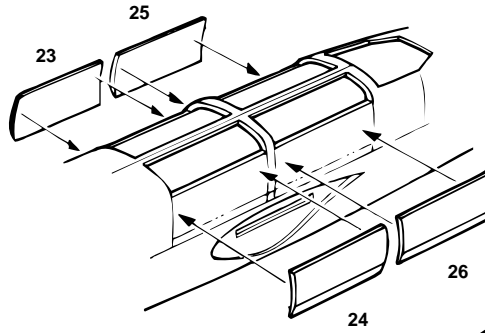
**10 BOMB BAY DOORS**



DOORS OPEN



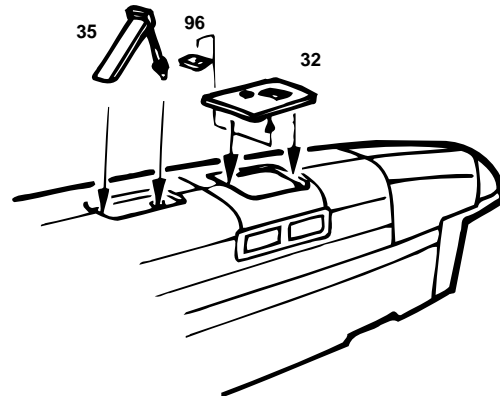
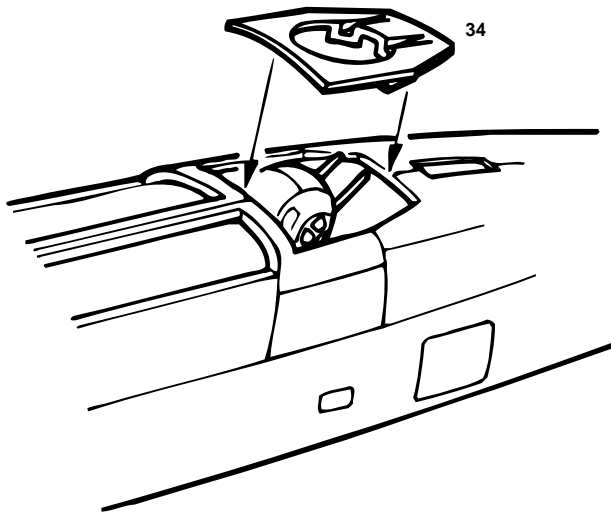
DOORS CLOSED



All Parts

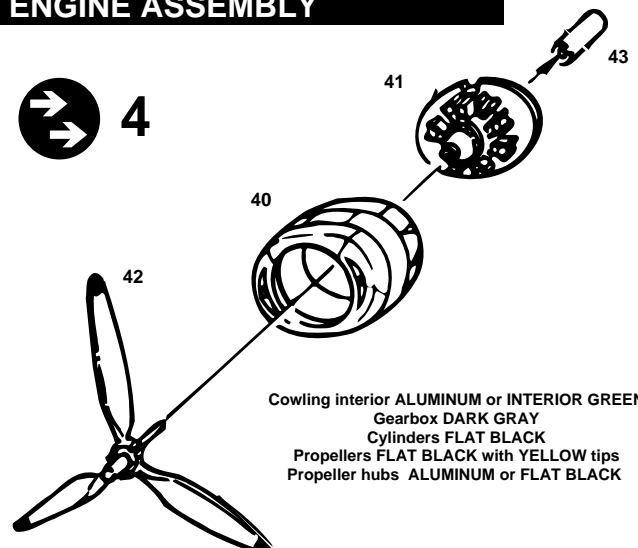
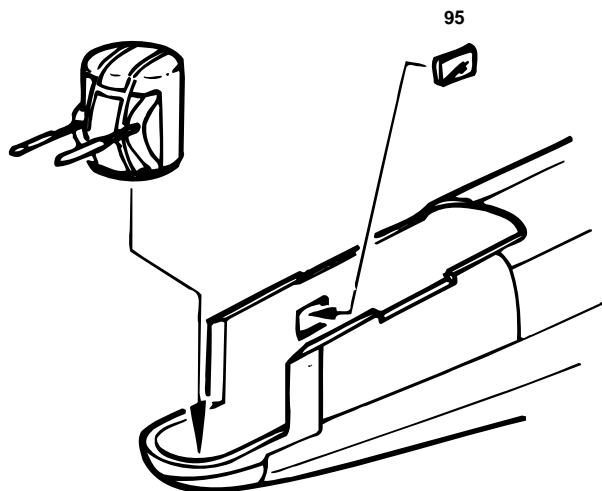
**11 BALL TURRET FAIRING**

**12 TAILSKID AND HATCH**



**13 TAIL TURRET INSTALLATION**

**14 ENGINE ASSEMBLY**

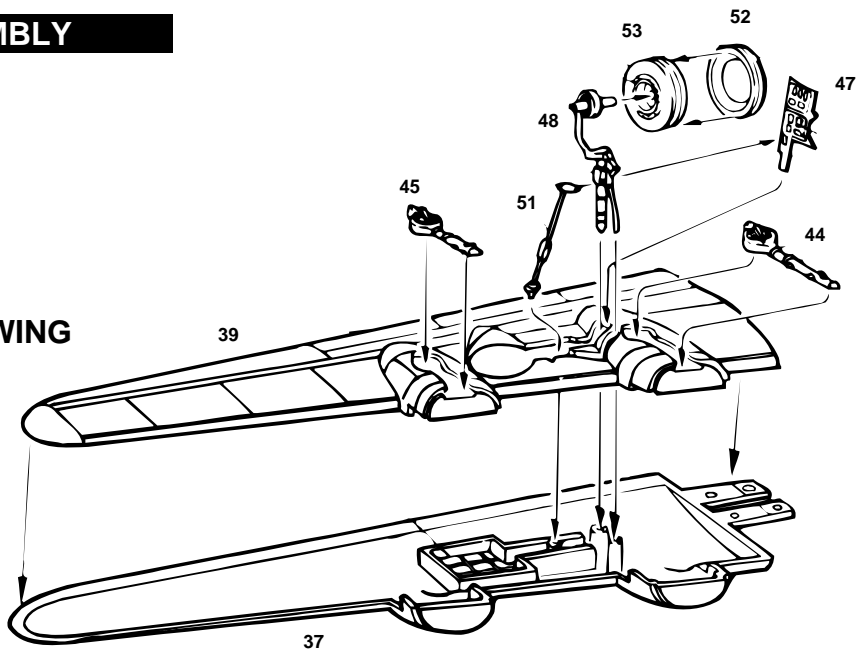


Cowling interior ALUMINUM or INTERIOR GREEN  
 Gearbox DARK GRAY  
 Cylinders FLAT BLACK  
 Propellers FLAT BLACK with YELLOW tips  
 Propeller hubs ALUMINUM or FLAT BLACK

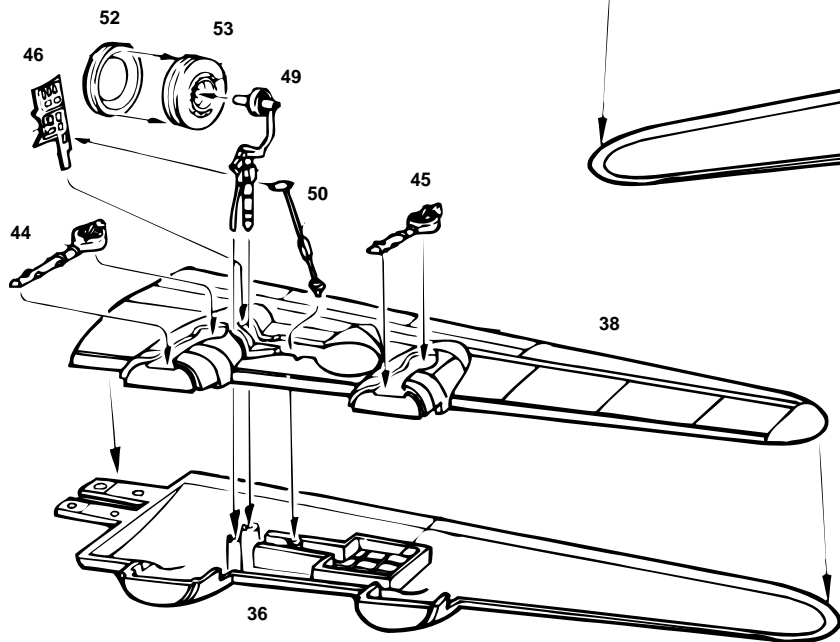
# 15 LEFT AND RIGHT WING ASSEMBLY

Wheel well and door interiors INTERIOR GREEN  
 Main gear struts and wheel hubs ALUMINUM  
 Tires FLAT BLACK-GRAY  
 Wheel door actuator strut SILVER  
 Superchargers/exhausts DULL RUST

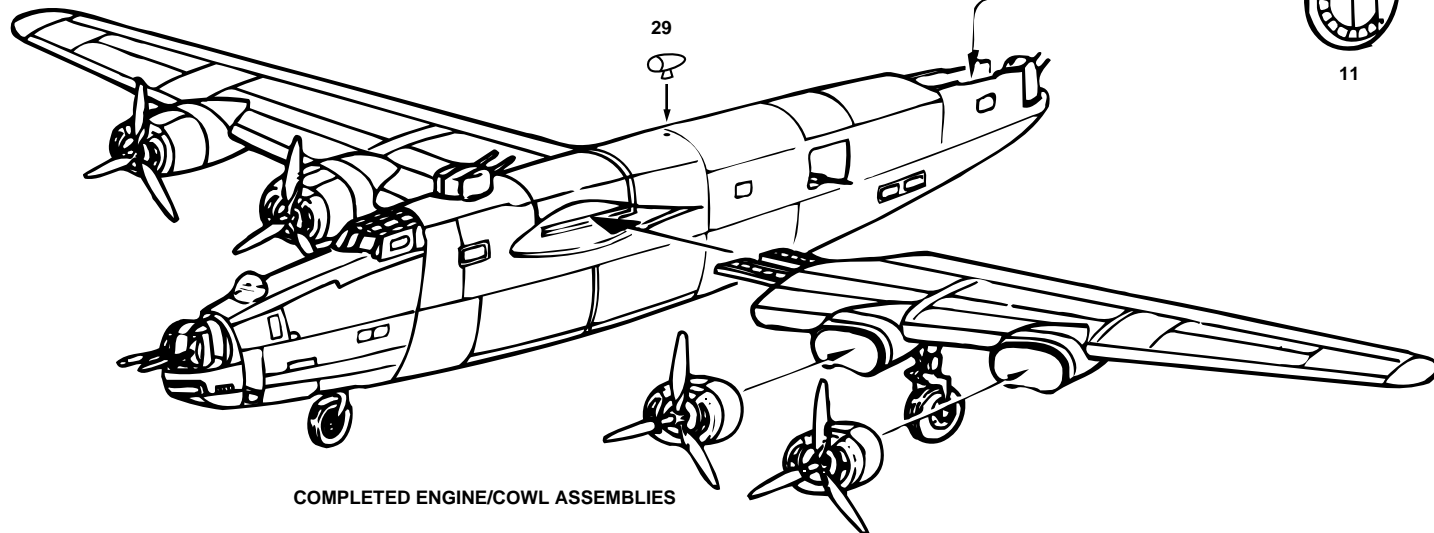
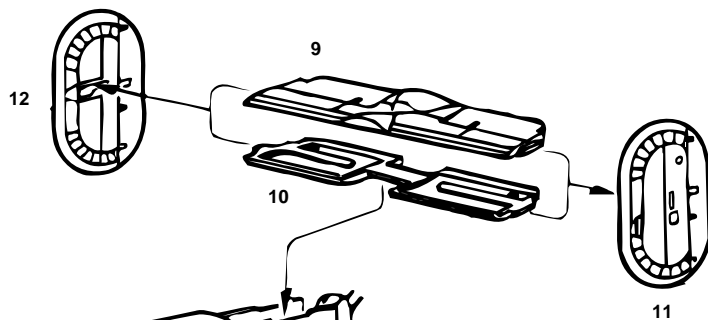
LEFT WING



RIGHT WING



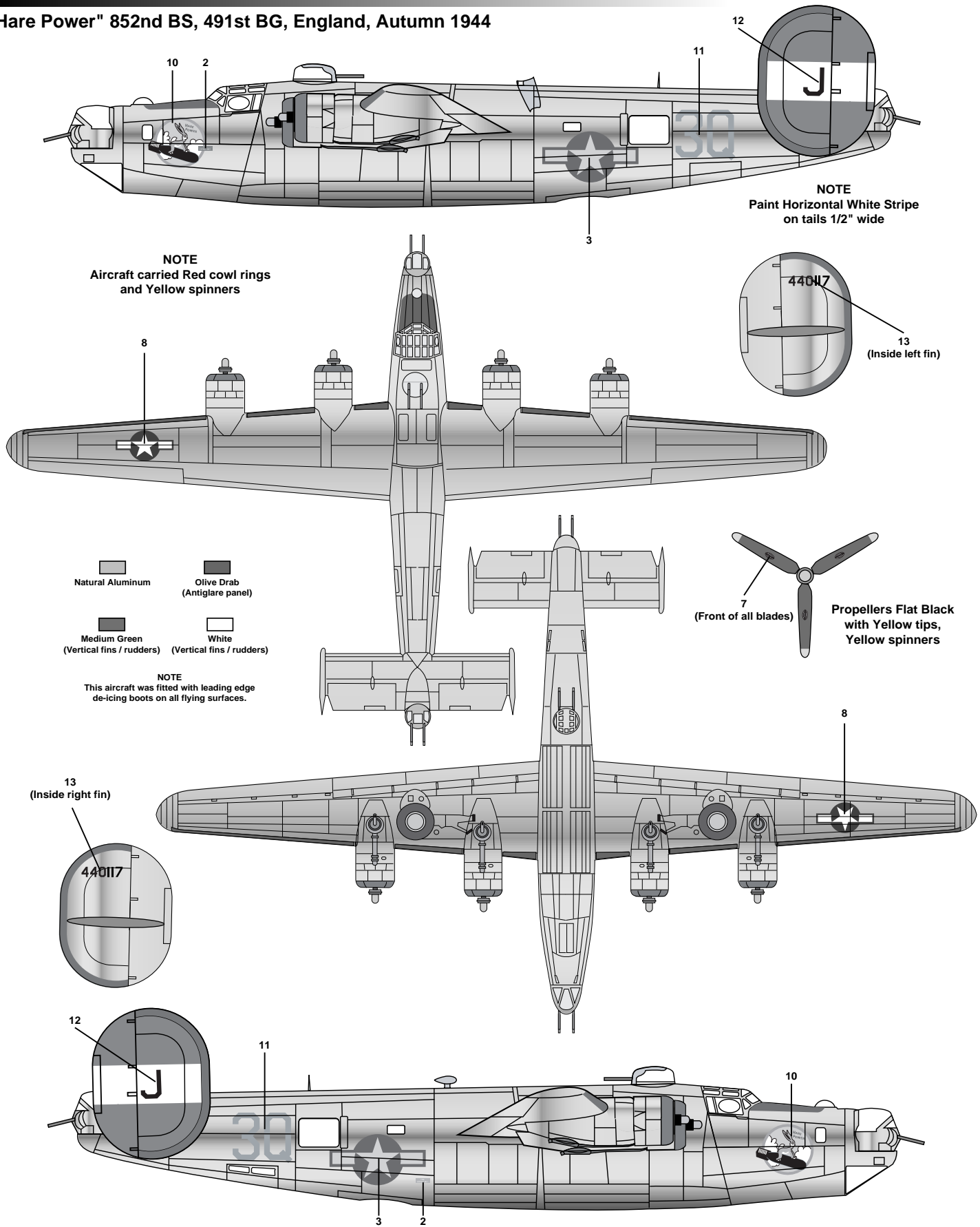
# 16 TAIL AND FINAL ASSEMBLY



COMPLETED ENGINE/COWL ASSEMBLIES

# PAINT & DECAL GUIDE

"Hare Power" 852nd BS, 491st BG, England, Autumn 1944



Paints:			
ModelMaster Acrylic:			
4729 Medium Green	4726 Olive Drab (Early)	1710 Olive Drab (Early)	1713 Medium Green
4677 Aluminum	4701 White	1781 Aluminum	1745 White
4701Black	4721 Yellow	1749 Flat Black	1708 Yellow





Your Minicraft model includes high-quality waterslide decals. These decals adhere best to a glossy surface; and it is recommended that you apply a clear gloss coat over your painted model.

Use a sharp scissors or knife to cut individual decals from the carrier sheet. Do not cut into the clear film surrounding the individual decals.

\* It is recommended that you apply one decal at a time.

\* Place the decal section in warm water, when first inserted in the water your decal will curl, after approximately ten seconds the decal will uncurl. Remove from water and lay on a paper towel. After approximately 10 - 20 seconds the decal will slide freely from the backing paper. Use a small brush to help slide the decal from the backing paper and into position on the model. Carefully blot excess water from the decal, using care not to move the decal or tear it.

\* If you choose to use a setting solution, apply a thin coat over the decal following the manufacturer's instruction.

\* Allow the decal to dry overnight. Wash any adhesive residue off the model with a small amount of clean water and dry thoroughly.

\* Apply clear gloss, matte or flat coat to seal decals following the instructions from the manufacturer.



*Legends in the making™*

Visit our Website-  
[www.minicraftmodels.com](http://www.minicraftmodels.com)

Minicraft Models  
1501 Commerce Drive  
Elgin, IL 60123

Phone: 847-429-9676