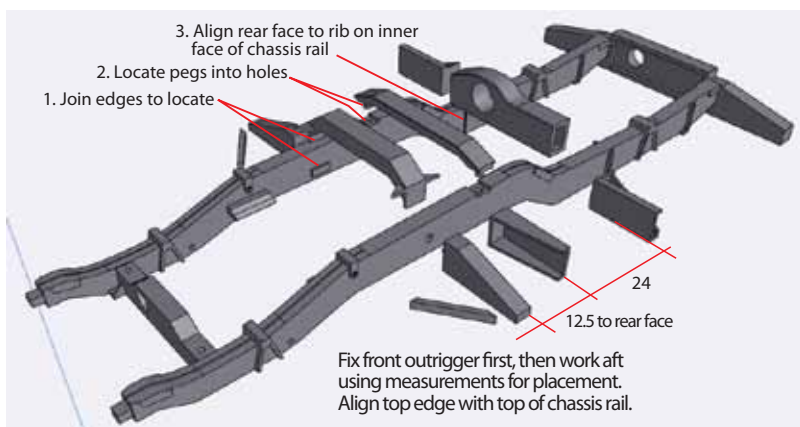
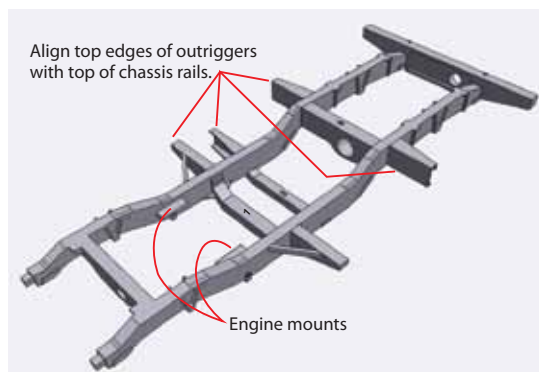


Trim off the supports from the 3D printed parts, a sharp sprue cutter is recommended. For the chassis scribe a cut line along the join between the chassis and the support upstands, use a fine saw to cut through to remove. Do not snap the supports off the parts. Some sanding/filling and drilling of location holes will be required. Wash parts prior to priming with a suitable plastic primer. Dry fit parts prior to final assembly. Use superglue [CA] or epoxy resin to fix parts.

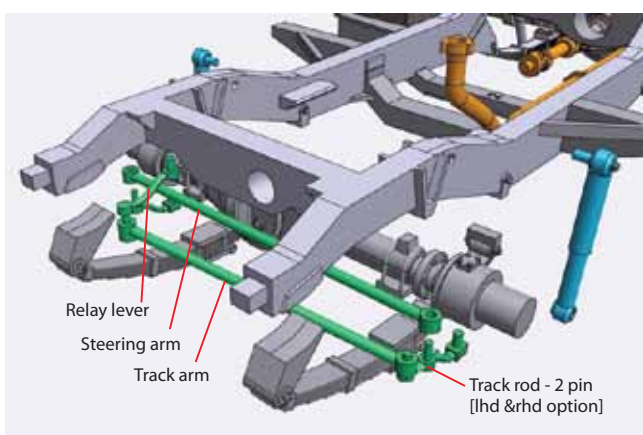


Fit cross braces and outriggers to complete chassis.



FRONT SUSPENSION/DRIVETRAIN.

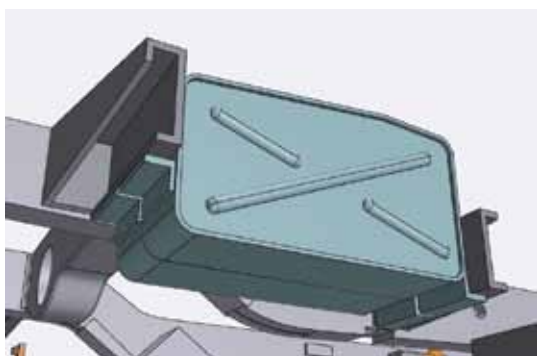
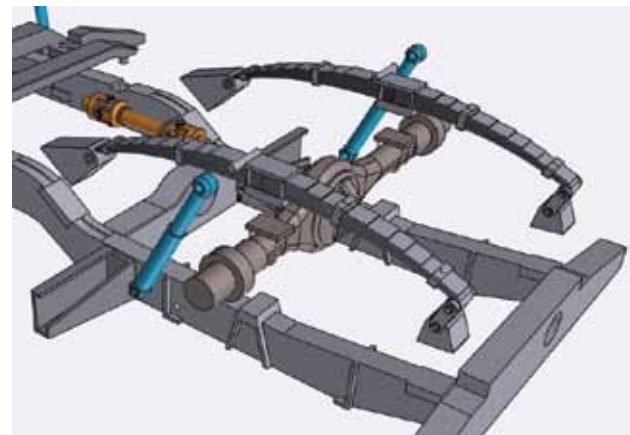
Locate springs onto chassis. Note pegs for shocks face out.
Locate front axle onto springs.
Fit shock upper peg to hole on chassis, lower locates to peg on spring.



For lhd swap location for 2 pin track rod and relay lever to the opposite hub
A dedicated lhd part is supplied, rotate steering arm through 180 deg.

REAR SUSPENSION/DRIVETRAIN.

Locate springs onto chassis. Note pegs for shocks face out.
Locate rear axle onto springs. Fit shock upper peg to hole on chassis, lower locates to peg on spring.

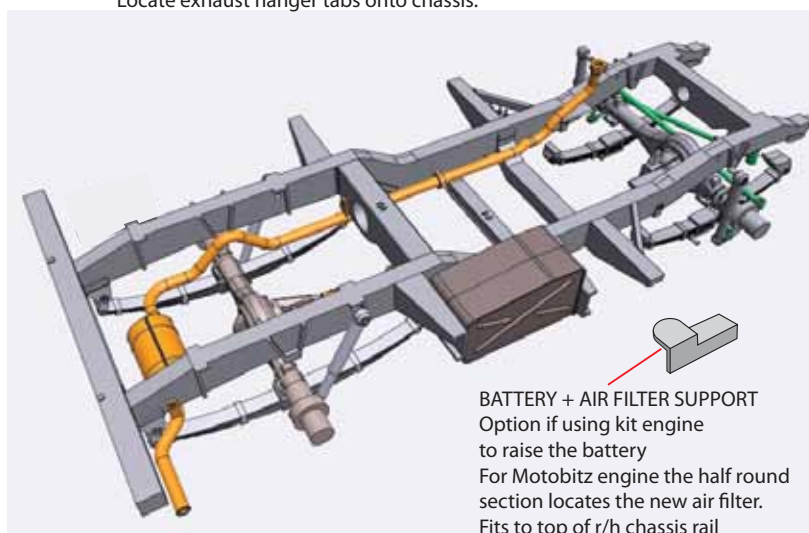


Fuel tank, join halves together. L brackets locate onto outriggers as shown.

Colours shown are used to differentiate parts and are not intended as paint colours.
Use your own reference material or gather information from book or internet sources.

EXHAUST FITTING

The front pipe is overlong to allow for trimming to fit the kit engine and the Motobitz Petrol Engine, trim at joint to mid pipe.
Locate exhaust hanger tabs onto chassis.



BATTERY + AIR FILTER SUPPORT
Option if using kit engine to raise the battery
For Motobitz engine the half round section locates the new air filter.
Fits to top of r/h chassis rail just aft of front cross member.