



This Detail Set was designed specifically to fit the Tamiya M5A1 U.S. Light Tank (kit No. 35097). Some trimming and/or modification of the resin and photo-etched parts may be necessary in order to obtain an optimum fit. Some minor cutting and modification of the plastic kit parts is necessary in order to utilize the resin and photo-etched detail parts contained in this Detail Set. Test fit all parts before final assembly to ensure proper fit. We strongly recommend that you read and understand these instructions fully before attempting to assemble this Detail Set.

RESIN PARTS NOT USED: 28, 29, 30, 39, 40, 43, 44

Omit the following Tamiya parts, which will be replaced by the resin & photo-etched detail parts contained in this set: A8, A10, A11, A12, A17, A18, A19, A21, C12, C13, C14, C17, C18, C19, C20, C21, C22, C23, C24, C25, C26, C27, C28, C29, C30, C31, C32, C33, C34, C35, C36, C37, C38, C39, C40, C41, C42, C43.

Figure 1 illustrates the modifications required for the Tamiya kit parts.

Figure 2 shows the location of the ventilator.

Figure 3 provides the assembly of the crew seats.

Figure 4 demonstrates the location of the fire extinguisher on the rear wall.

Figure 5 illustrates the locations of details on the sidewalls.

Figure 6 is a view from above showing the orientation of parts on the hull floor.

Figure 7 shows details added to the transmission.

Figure 8 illustrates the attachment of the left & right sponson shelves.

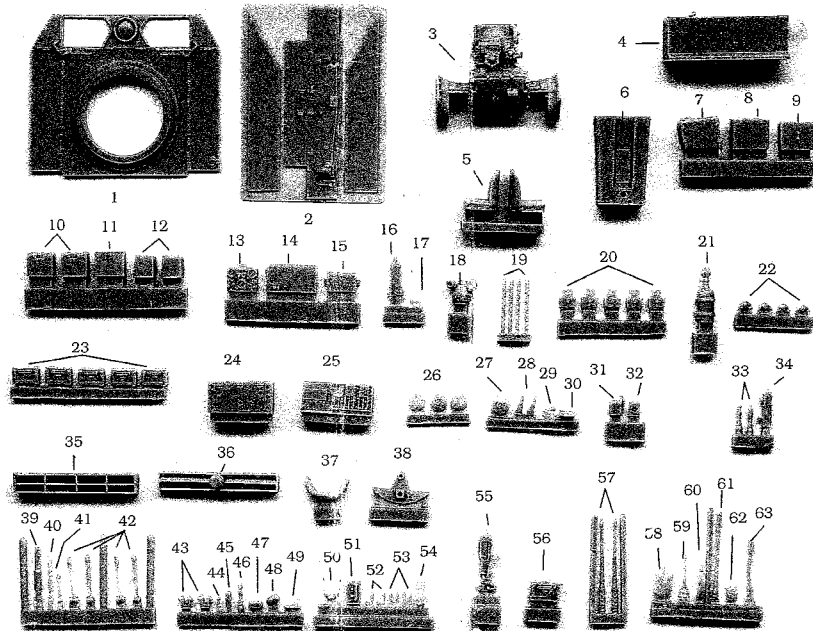


Figure 9 demonstrates the location of the rear wall within the upper hull.

Figure 10 shows the locations of the drivers controls, coaxial .30 cal MG, and compass under the glacis plate.

Figure 11 illustrates the lay-out of details on the left & right sponson shelves.

Figure 12 shows the assembly of the upper hull plate. Note the location of the .50 cal MG.

Figure 13 shows the rear hull storage rack. Fold photo-etched part #6 along the etched lines & cement it to the hull before adding photo-etched parts # 4 & 5. Note the relocation of the tail lights.

Figure 14 shows the location of details on the front right fender.

Figure 15 shows the location of details on the front left fender.

Figure 16 provides a view of clamps, brackets, & straps for stowing the pioneer tools.

Figure 17 illustrates the installation of the exhaust grills on the rear hull.

Figure 18 shows the locations of the fender mounting pads.

Figure 19 shows the configuration of the headlight brush guards.

Figure 20 illustrates the assembly of the .50 cal MG.

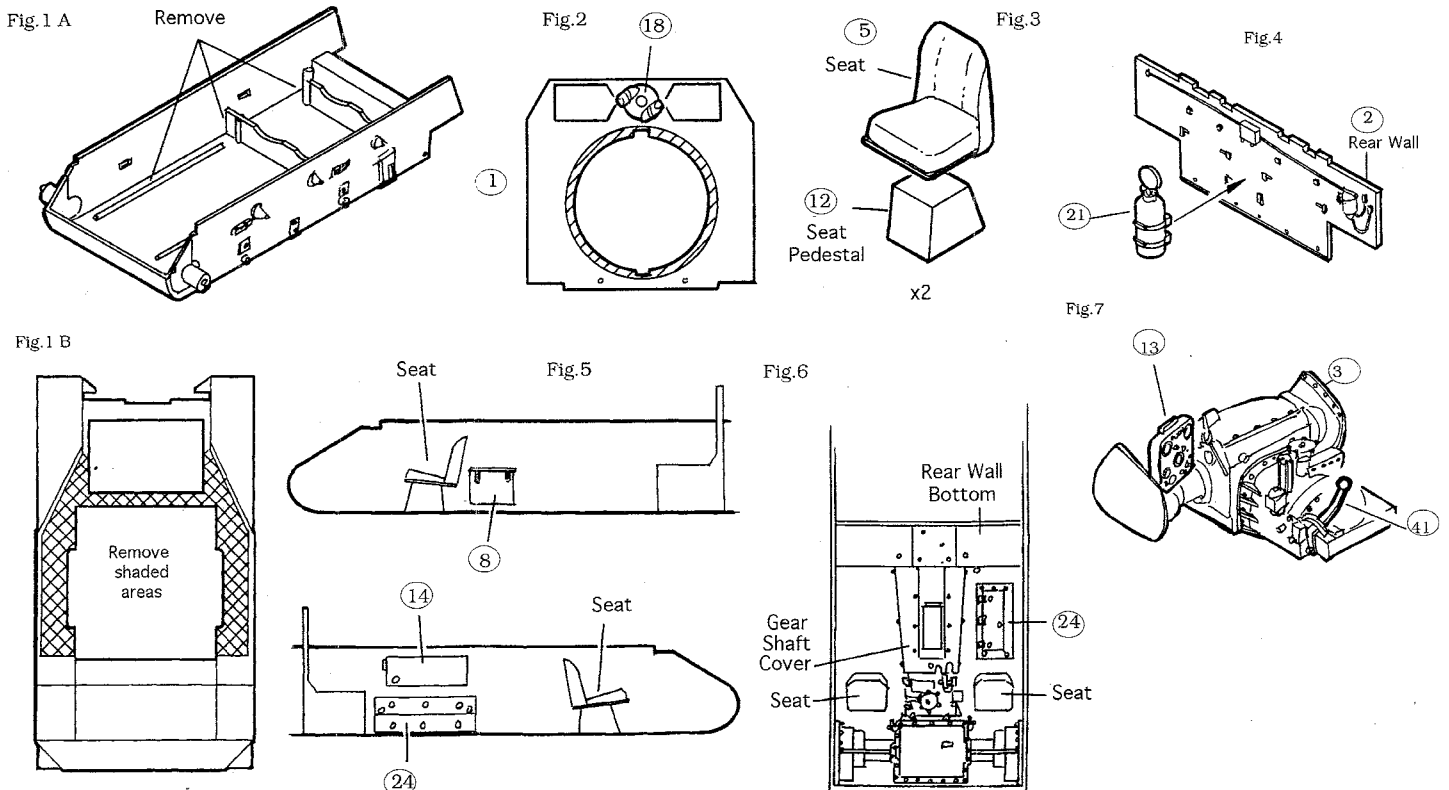


Fig.8

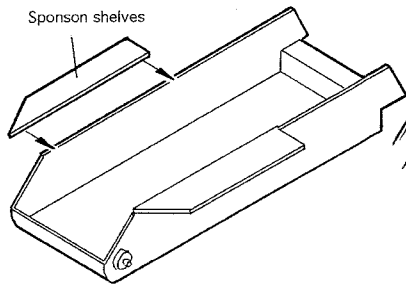


Fig.9

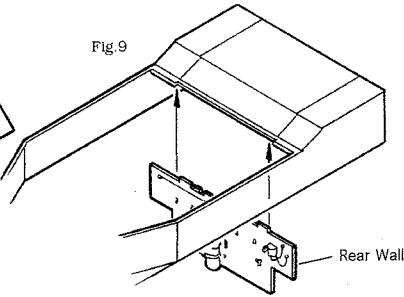


Fig.10

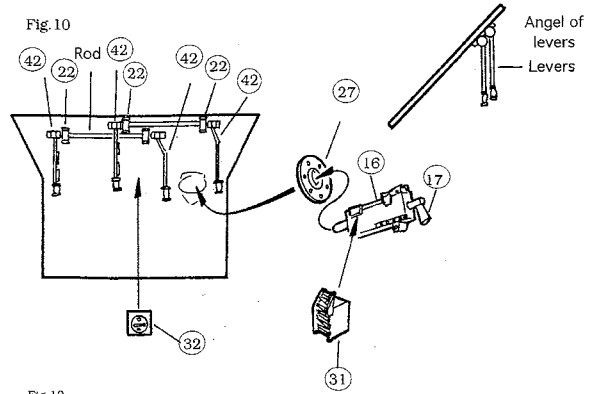


Fig.11

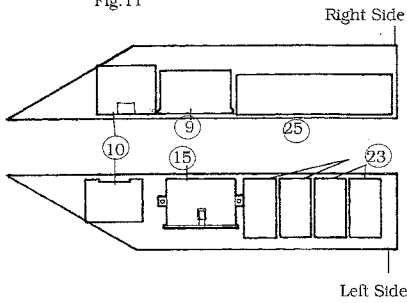


Fig.12

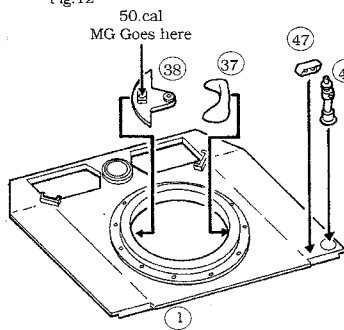


Fig.13

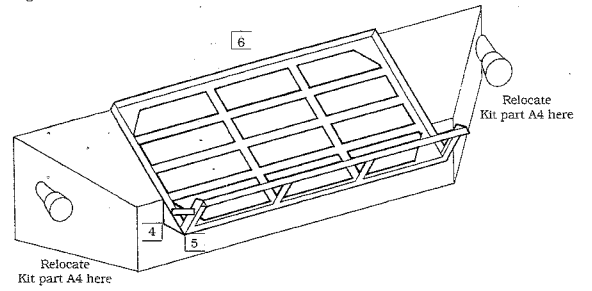


Fig. 14 & 15

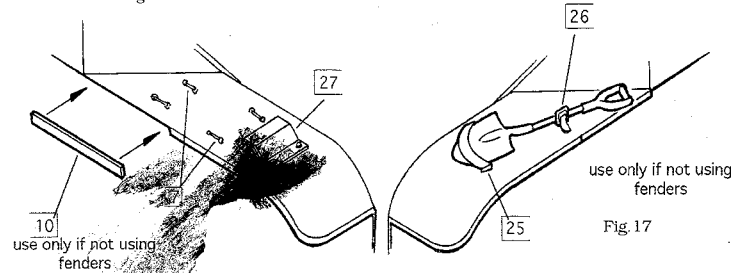


Fig.16

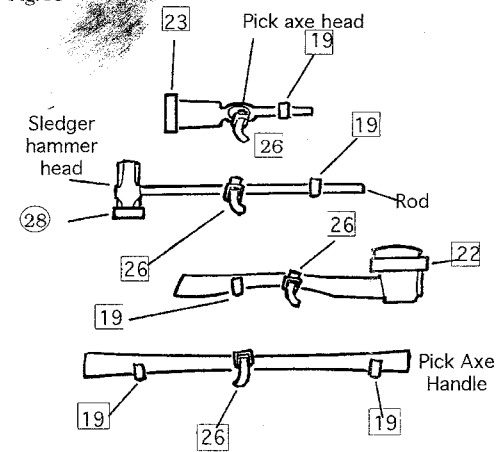


Fig.18

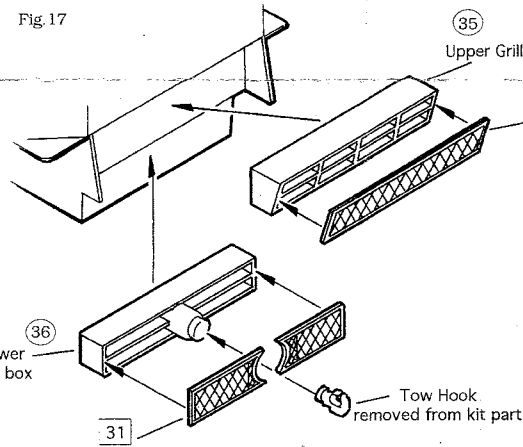
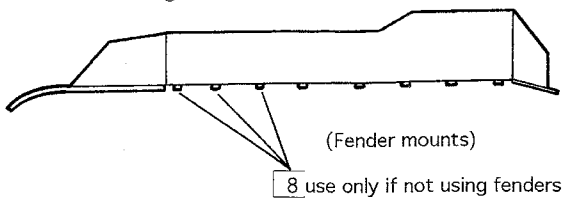
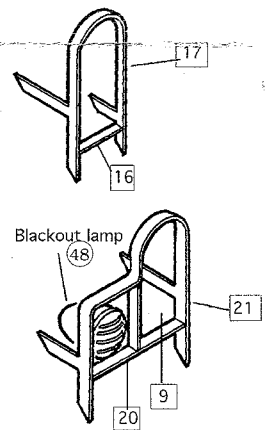
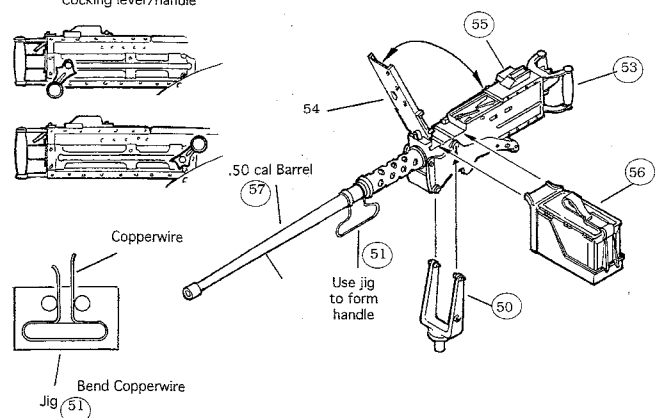


Fig.19



Option for part 52  
Cocking lever/handle

Fig.20



□ Photo-Etched parts  
○ Resin