

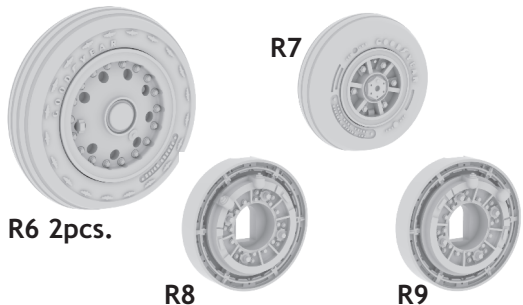
648 176 F-104 undercarriage wheels early

for F-104G

for Hasegawa/Eduard kit - pro stavebnici Hasegawa/Eduard



1/48 scale



COLOURS

GSI Creos (GUNZE)		Mr.METAL COLOR	
AQUEOUS	Mr.COLOR	Mr.METAL COLOR	ALUMINIUM
[H77]	[C137]	[MC218]	ALUMINIUM
TIRE BLACK			

This product contains metal and resin detail parts for upgrading scale plastic models. When selecting this set make sure that it is for the kit mentioned in product name as these sets are made specifically for that kit. When upgrading the model some cutting or corrections may be necessary for parts to fit accurately. **WARNING!** This set contains small and sharp parts. Work carefully in a ventilated and well-lit room. Safety glasses are recommended. This product is not suitable for children below 14 years of age.

Tento výrobek obsahuje leptané a odlévané detaily pro úpravu a vylepšení plastikového modelu. Při výběru sady kovových detailů zkontrolujte, zda je určena pro model, který chcete upravit. Model, pro který je sada určena, je uveden v názvu výrobku. Pro přesnou aplikaci kovových a odlévaných dílů může být zapotřebí upravit díly upravovaného modelu. **POZOR!** Sada obsahuje malé ostré díly. Pracujte ve větrané a dobře osvětlené místnosti. Doporučujeme použití ochranných brýlí. Tento výrobek není vhodný pro děti mladší 14 let.

eduard

435 21 Obrnice 170
Czech Republic

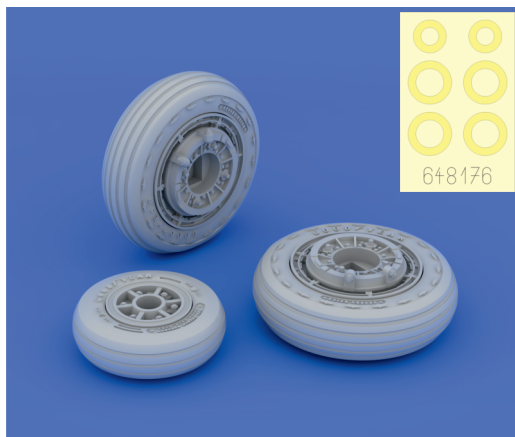
www.eduard.com



648 176 F-104 undercarriage wheels early 1/48

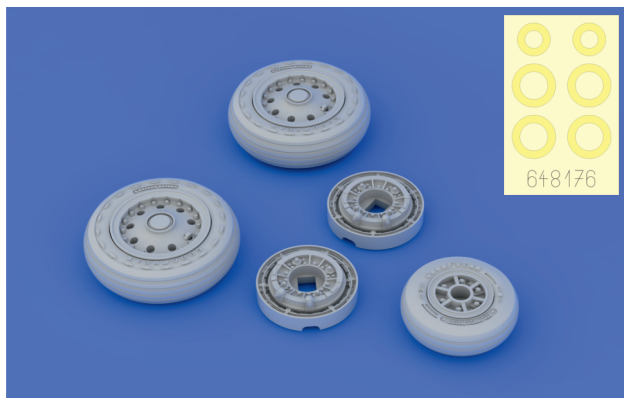
for Hasegawa/Eduard kit - pro stavebnici Hasegawa/Eduard

BRASSIN



BRASSIN

eduard

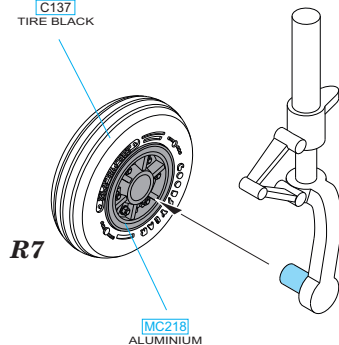


BEST BRASS RESIN AROUND!

- | | | |
|---------------------------|---------------------|---|
| REMOVE
ODSTRANIT | BEND
OHNOUT | SYMMETRICAL ASSEMBLY
SYMETRICKA MONTAZ |
| GRIND
OBROUSIT | OPTION
VOLBA | SCRIBE THE PANEL AND HOLES
RYTI |
| DRILL HOLE
VRTAT OTVOR | REPLACE
NAHRADIT | REVERSE SIDE
OTOČIT |

1

H77
C137
TIRE BLACK



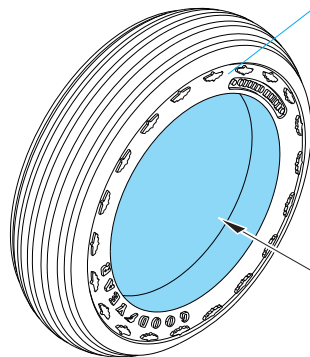
R7

plastic R16

MC218
ALUMINIUM

H77
C137
TIRE BLACK

2



R6

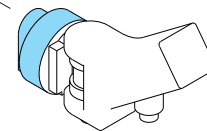
MC218
ALUMINIUM

R8

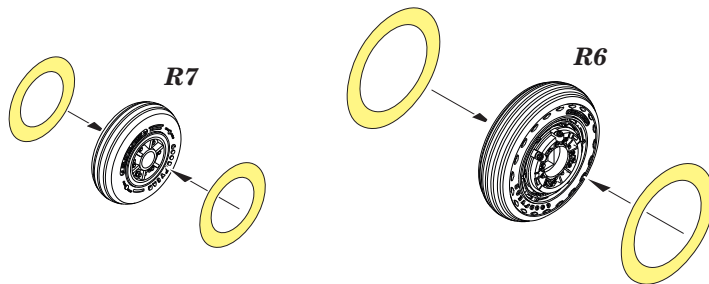
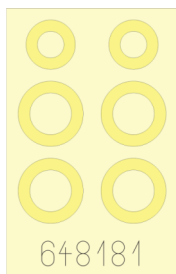
R9

plastic R17

plastic R18



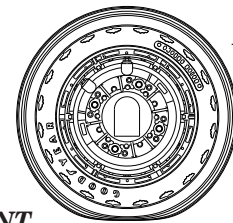
R8 - RIGHT SIDE
R9 - LEFT SIDE



R7

R6

CORRECT POSITION



R6+R8

FRONT