

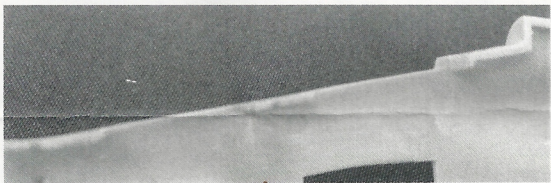
RESIN PARTS

- | | | |
|-----------------------------------|---------------------------------|-------------------------------|
| 1. Tub | 9. Throttle (x2) | 17. Front Seat Rail - R |
| 2. Front Seat C-2 | 10. Stick (x2) | 18. Rear Seat Rail - L |
| 3. Rear Seat C-2 | 11. Leg Restraining Plates (x4) | 19. Rear Seat Rail - R |
| 4. MB Seat (x2) | 12. Front Instrument Panel | 20. Rear Seat Head Back Plate |
| 5. Canopy Ejection Cartridge (x4) | 13. Rear Instrument Panel | 21. Front Side Wall - L |
| 6. Rudder Pedals (x2) | 14. Front Coaming | 22. Rear Sidewall - L |
| 7. Canopy Lock (x2) | 15. Rear Coaming | 23. Front Sidewall - R |
| 8. Seat Handle (x2) | 16. Front Seat Rail - L | 24. Rear Sidewall - R |

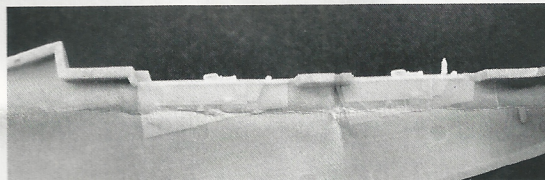


Item # BLC48014
 TF-104G/J STARFIGHTER
 cockpit set for Hasegawa kit
 1/48 scale

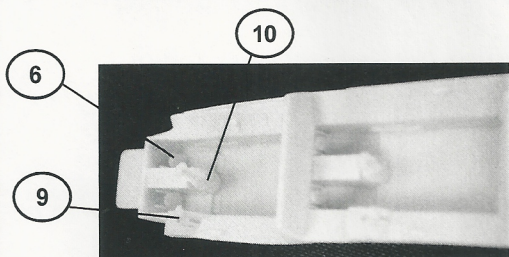
It is important when working with resin parts to test fit several times and trim where necessary before gluing into place.



Remove part of canopy sill until flush with inside of fuselage half.

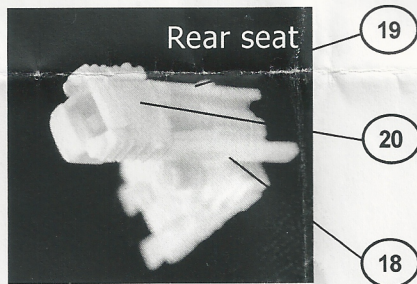
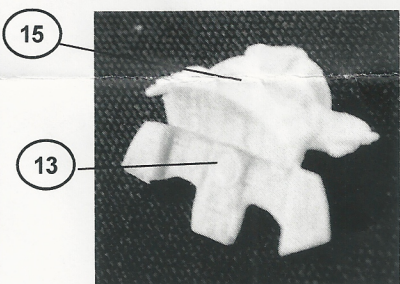
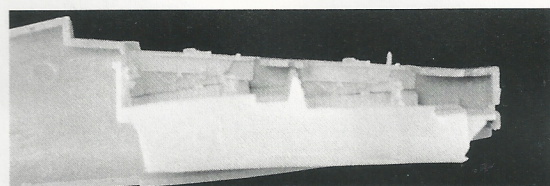


Align all four side walls and glue inside both sides of fuselage. Test fit with tub before gluing

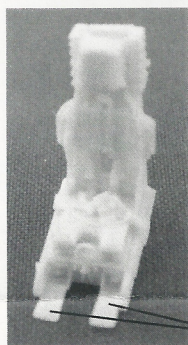
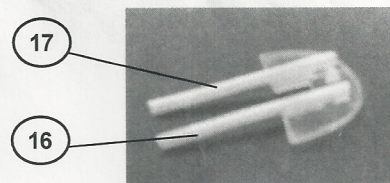


Remove (sand) bottom carrier from tub as much as possible without perforating the cockpit floor.

Repeat #9 and #10 in rear cockpit

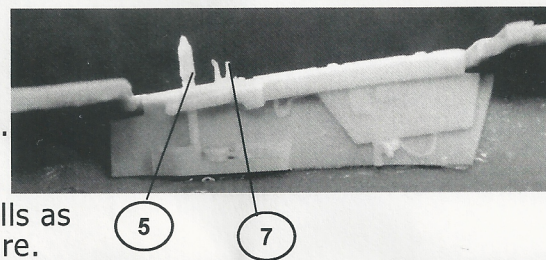


Use front seat rails as indicated on Hasegawa's instructions. Mount as shown with clear part Y8.

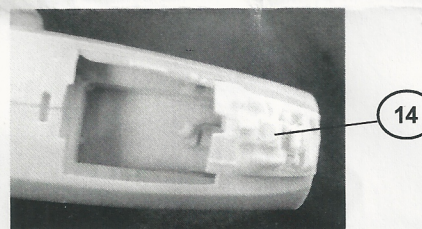


Since a lot of detail is incorporated to also display the seat outside the cockpit (by choice), a tight fit is possible. If by any chance a problem might occur while installing the seat into the tub, remove or sand gently some detail from both sides of the seat. Once the seat is mounted into the cockpit, this will not be visible.

Glue #5 on each of the four side walls. Glue #7 on both front and rear R side walls as shown in picture.



A choice is given to build either American, Belgian, Swedish, the Netherlands and other European variants by using the C-2 seat. The MB seat is included to build German and/or other variants.



ACKNOWLEDGEMENTS: As always, we thank the Machmaster and Lonnie Berry for their continued support

PAINTING INSTRUCTIONS
 Paint cockpit according to kit instructions unless otherwise indicated

BEST REFERENCES:

- Starfighter - Geschiedenis van de Lockheed F-104G in dienst van de NATO - R. Verhegghen
- Lock On #1 - F-104 G/J Starfighter - Verlinden Publications
- Detail & Scale - F-104 Starfighter - Bert Kinzey
- Master pattern and instructions by Jef Verswyvel.



Copyright © Squadron Products 2009