

# Alpha Jet Patrouille



## Alpha Jet Patrouille

The Alpha Jet is the result of a German-French joint effort venture of the 1970s. It is a twin-engine, two-seater light attack jet and advanced trainer aircraft.

The first production Alpha Jet for the French made its first flight in 1977. A total of 176 production of Alpha Jet E were delivered up to 1985. QinetiQ operated Alpha Jet A. It bought 12 ex-German Air Force Alpha Jets for continuation training in late 1990s.

Discovery Air Defence Services has 16 Alpha Jet A trainers, 8 of them are based with 3 Wing at Bagotville, Quebec, and the remainder are based at various fixed locations across Canada such as 4 Wing Cold Lake in Alberta.

Some Alpha Jets retained the Luftwaffe paint schemes but a few have been repainted in desert or northern camouflage.

1970年代にドイツとフランスの協同開発により製造された双発エンジン縦列複座の軽攻撃/高等練習機が【アルファジェット】です。フランス空軍向けの初の量産タイプは1977年に初飛行し、1985年までに合計176機の【E型】が引き渡されました。

様々な軍事サービスを請け負うイギリスの防衛技術民間企業 キネティック (Q i n e t i Q) 社は、1990年代に延長訓練教程のためドイツ空軍に配備されていた12機の【A型】を導入し運用しています。また同様にカナダ軍と協力して防空訓練を行う民間企業 ディスカバリー エアー ディフェンス サービス社は、16機の練習機【A型】を保有し、そのうち8機はケベック州 パコツヴィール基地のカナダ空軍 第3航空団を拠点しており、残りの機体はアルバータ州 コールドレイク基地の第4航空団など、カナダ各地の様々な基地を拠点としています。これらのうち一部の機体はドイツ空軍の機体塗装のままですが、幾つかは砂漠または冬季迷彩が施されています。

### CAUTION

\*Read carefully and fully understand the instructions before commencing assembly.

\*Keep out of reach of children. Children must not be allowed to put any parts in their mouths, or pull plastic bag over their heads.

\*When using adhesives and paints, please make sure not to use them in closed room or near the fire.

\*When assembling this kit, tools including knives are used. Extra care should be taken to avoid injury.

**WARNING: CONTAIN SMALL PARTS NOT FOR CHILDREN UNDER 14 YEARS OF AGE.**



Drill



Remove



2 Set



Bend



Optional



Decal



Super Glue



Fill Hole



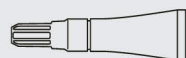
No Cement



Be Careful

### TOOLS RECOMMENDED

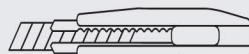
Cement



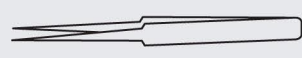
Side Cutter

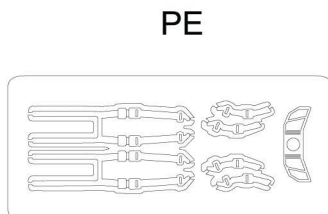
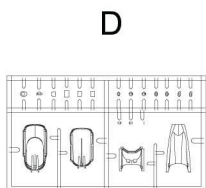
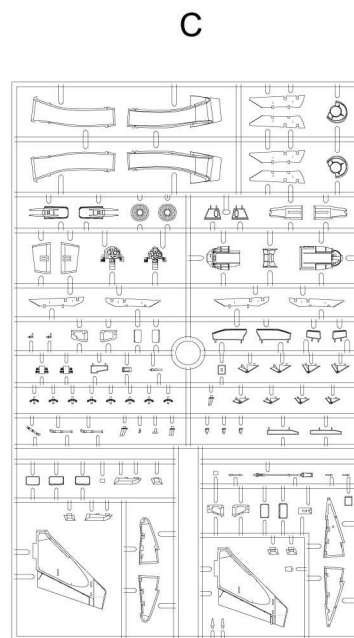
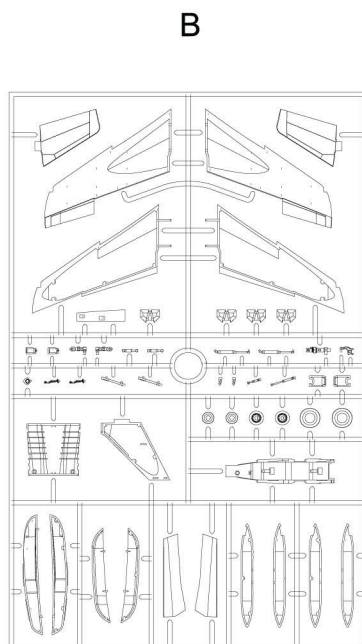
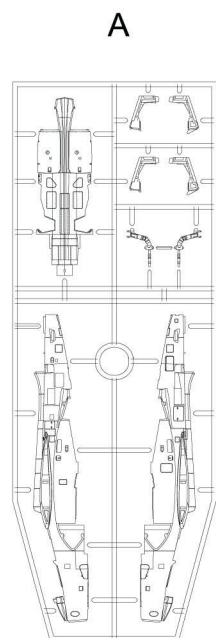


Modeling Knife



Tweezers





**AFTERMARKET SERVICES CARD**

When requesting replacement parts, please take or send this form to your local dealer so that the parts required can be correctly identified. Please note that specifications and availability are subject to change without notice.

or visit <http://www.kineticmodel.com> for latest information.  
For more information, please contact [services@kineticmodel.com](mailto:services@kineticmodel.com)

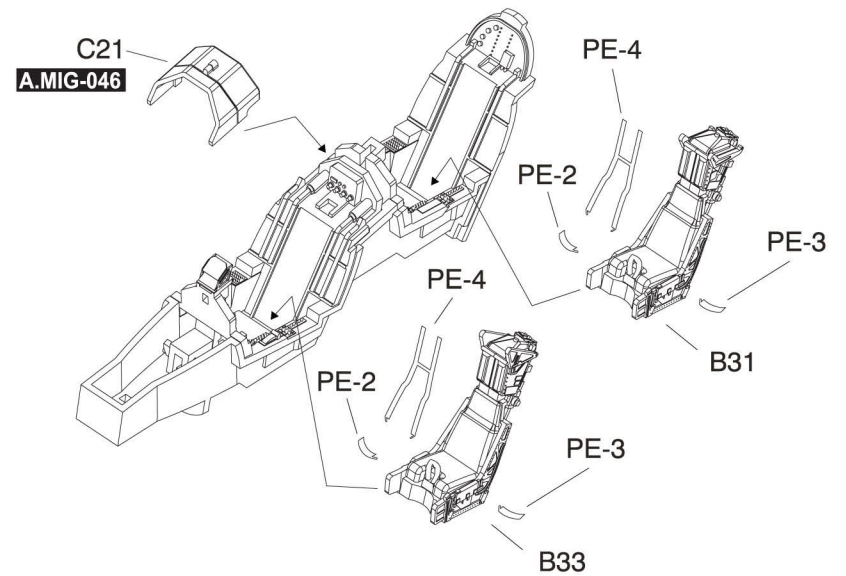
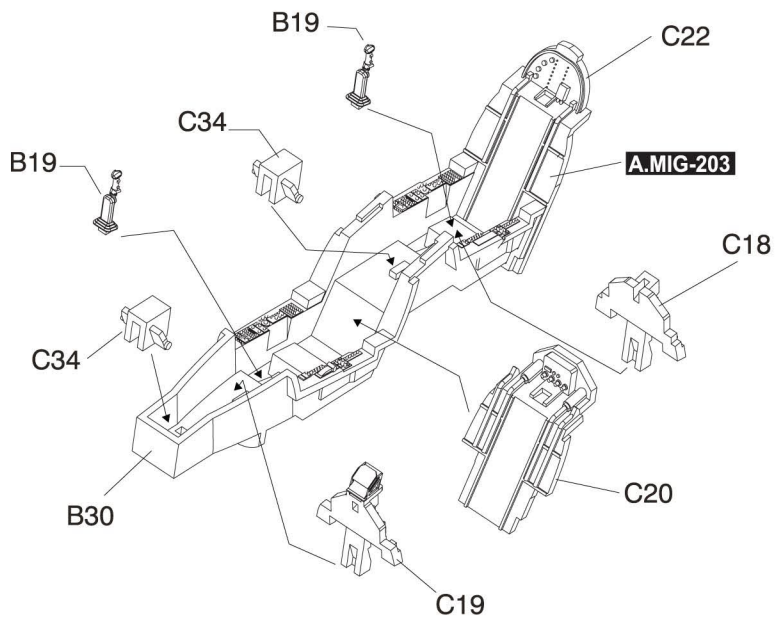
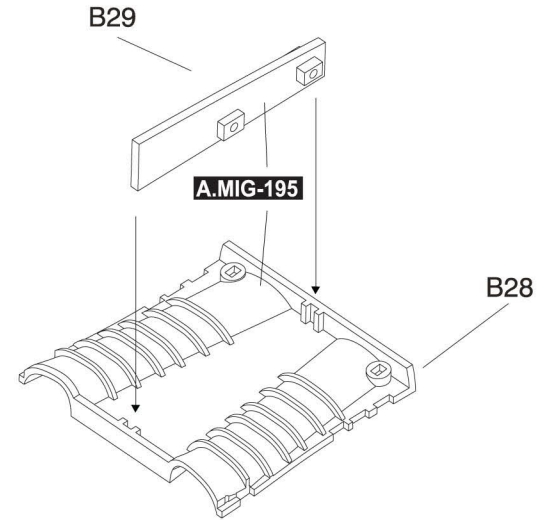
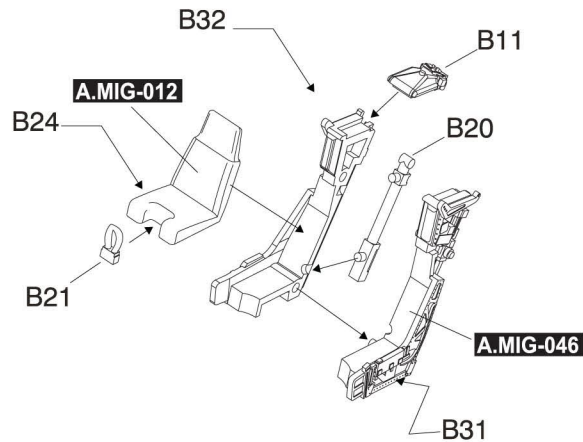
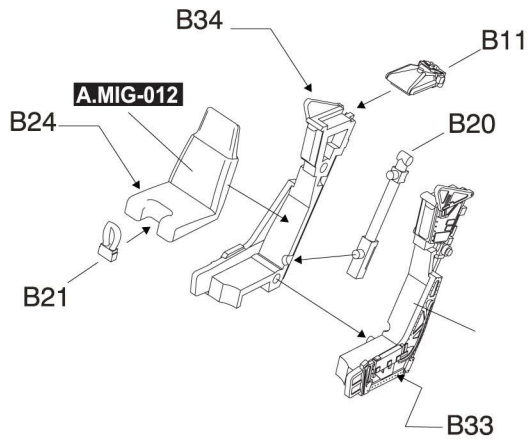
Part No.	Item 48043
00-145-001 x2	A Main fuselage
00-145-002 x2	B Wing parts
00-145-003 x2	C
00-145-004 x2	D
03-145-48043	Manual
01-145-48043	Decal
06-145-48043 x2	PE

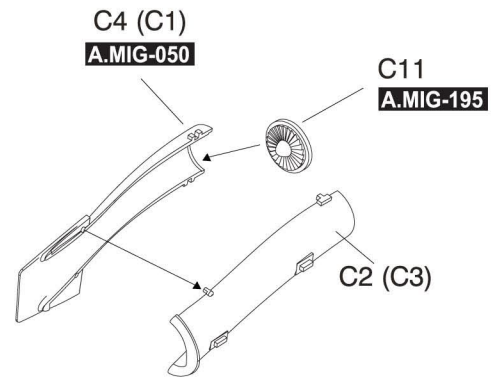
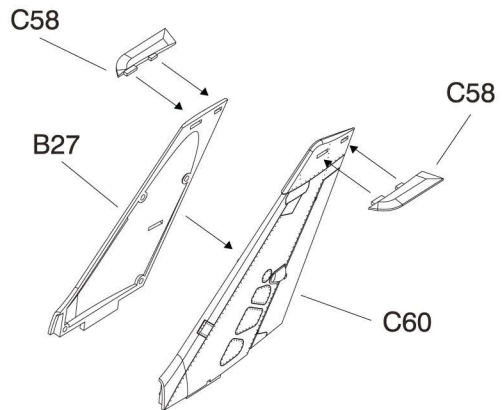


**PAINT INDEX**

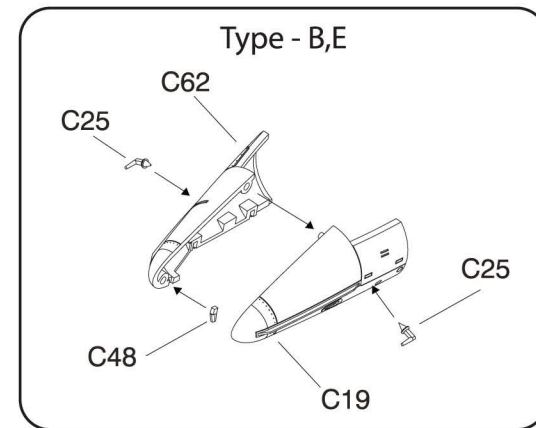
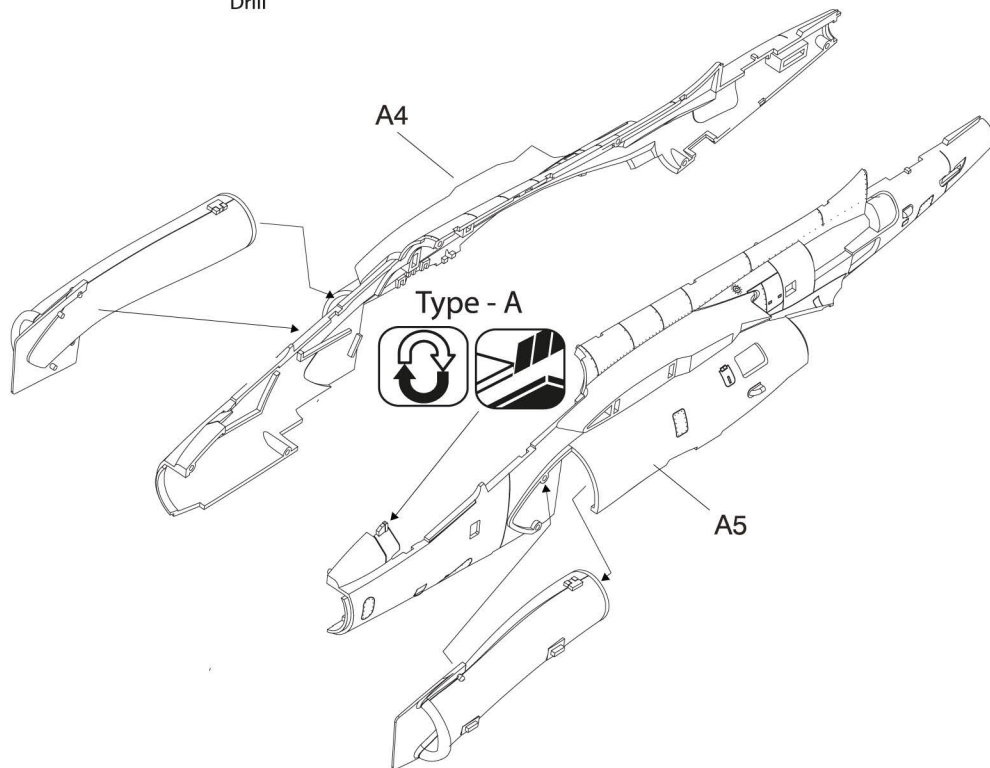
COLOR	AMMO MIG	VALLEJO MODEL COLOR	GSI CREOS MR. COLOR	TAMIYA ENAMEL/ACRYLIC	HUMBROL ENAMEL
BUFF	A.MIG-012	976	-	XF57	-
SATIN BLACK	A.MIG-032	861	2	X18	21
MATT BLACK	A.MIG-046	950	12	XF1	33
SATIN WHITE	A.MIG-047	842	-	-	-
RED	A.MIG-049	909	-	-	-
MATT WHITE	A.MIG-050	951	11	XF2	34
BLUE	A.MIG-086	962	-	-	-
GLOSSY VARNISH	A.MIG-091	510	-	-	-
CRYSTAL RED	A.MIG-093	934	-	X27	220
CRYSTAL PERISCOPE GREEN	A.MIG-096	936	-	X25	-
CRYSTAL ORANGE	A.MIG-097	937	-	X26	-
MARINE BLUE	A.MIG-123	839	-	-	-
SILVER	A.MIG-195	790	8	XF16	11
LIGHT GREY (FS36375)	A.MIG-203	990	-	-	-
MEDIUM GREY (FS36270)	A.MIG-211	870	-	-	-

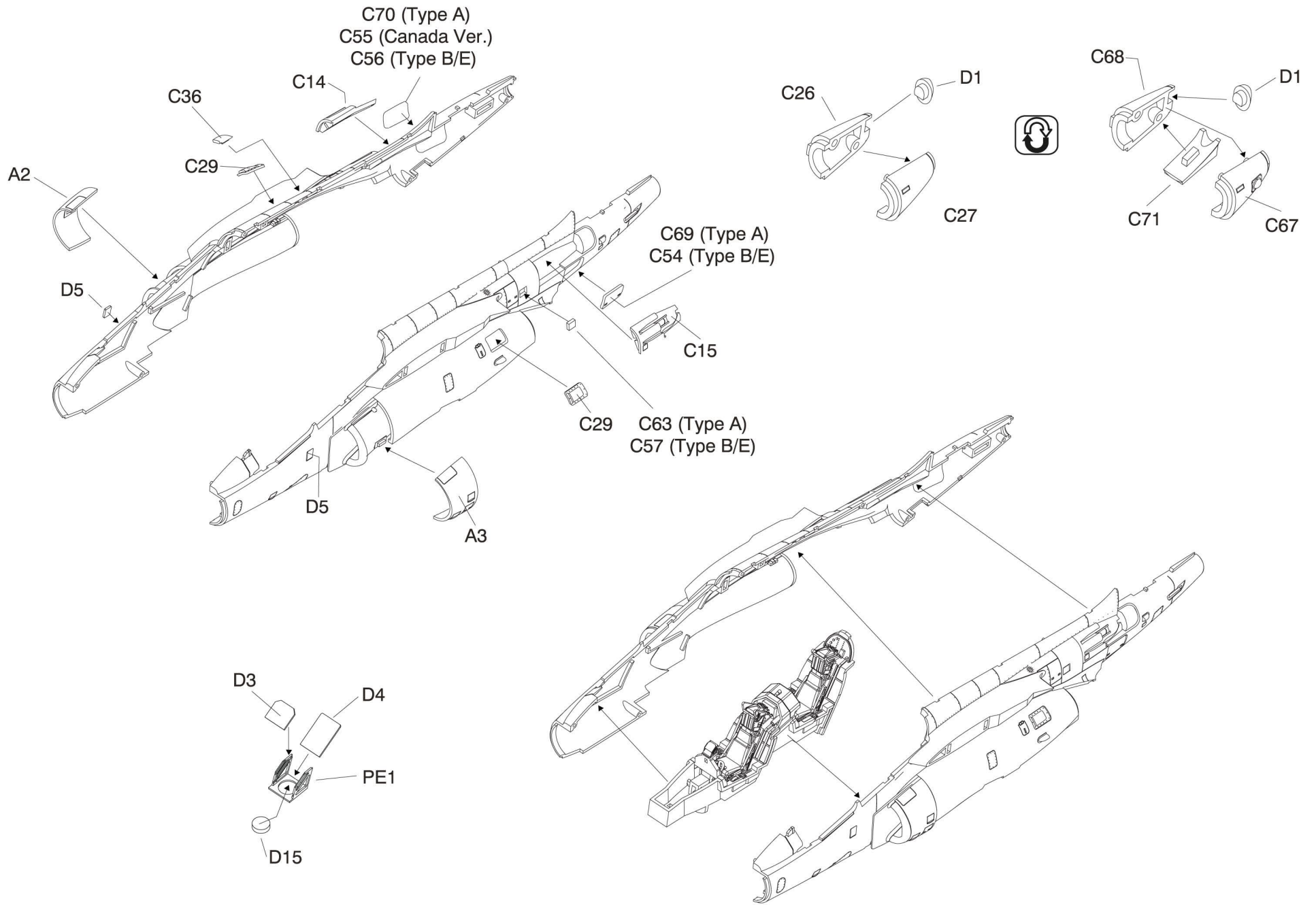
1

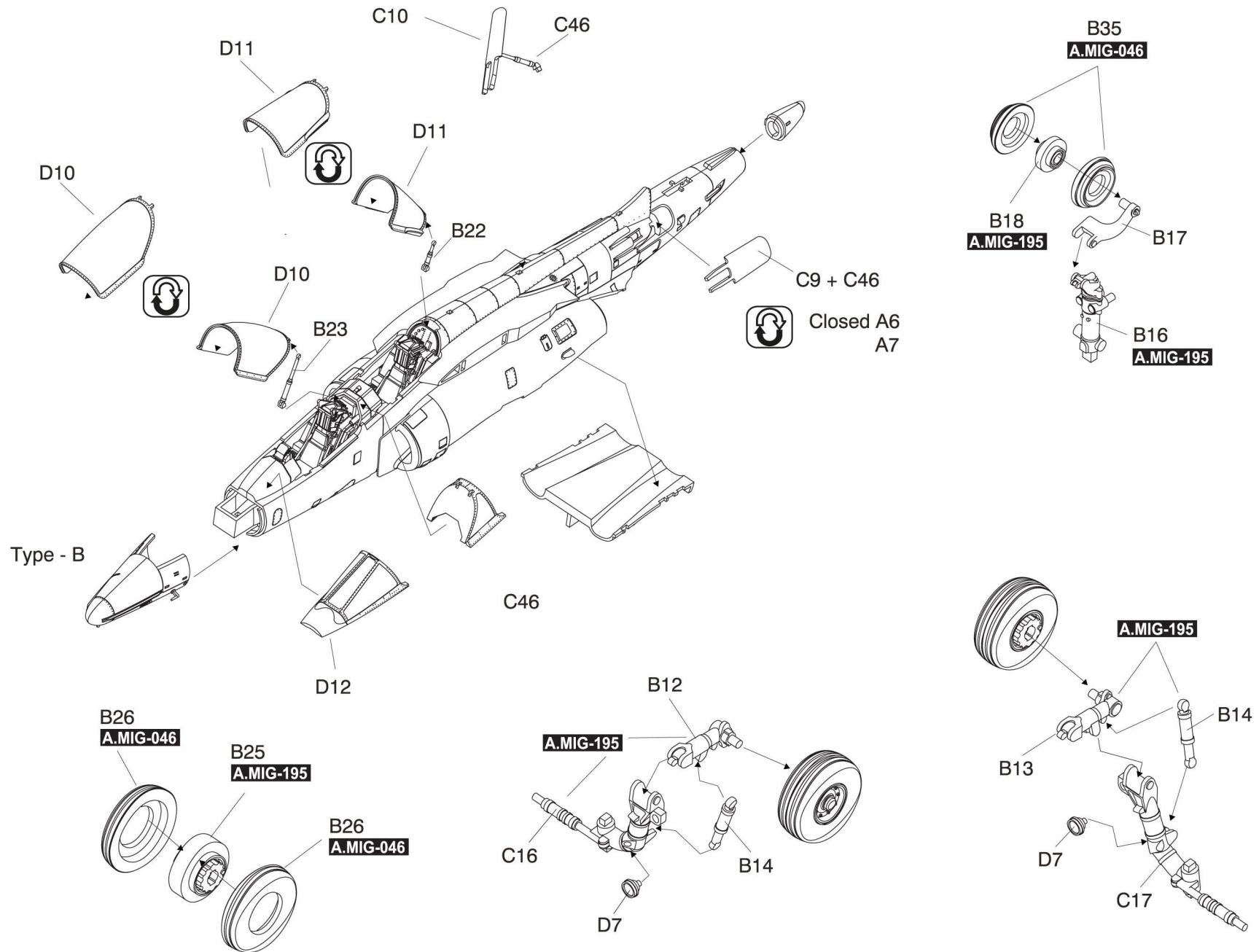


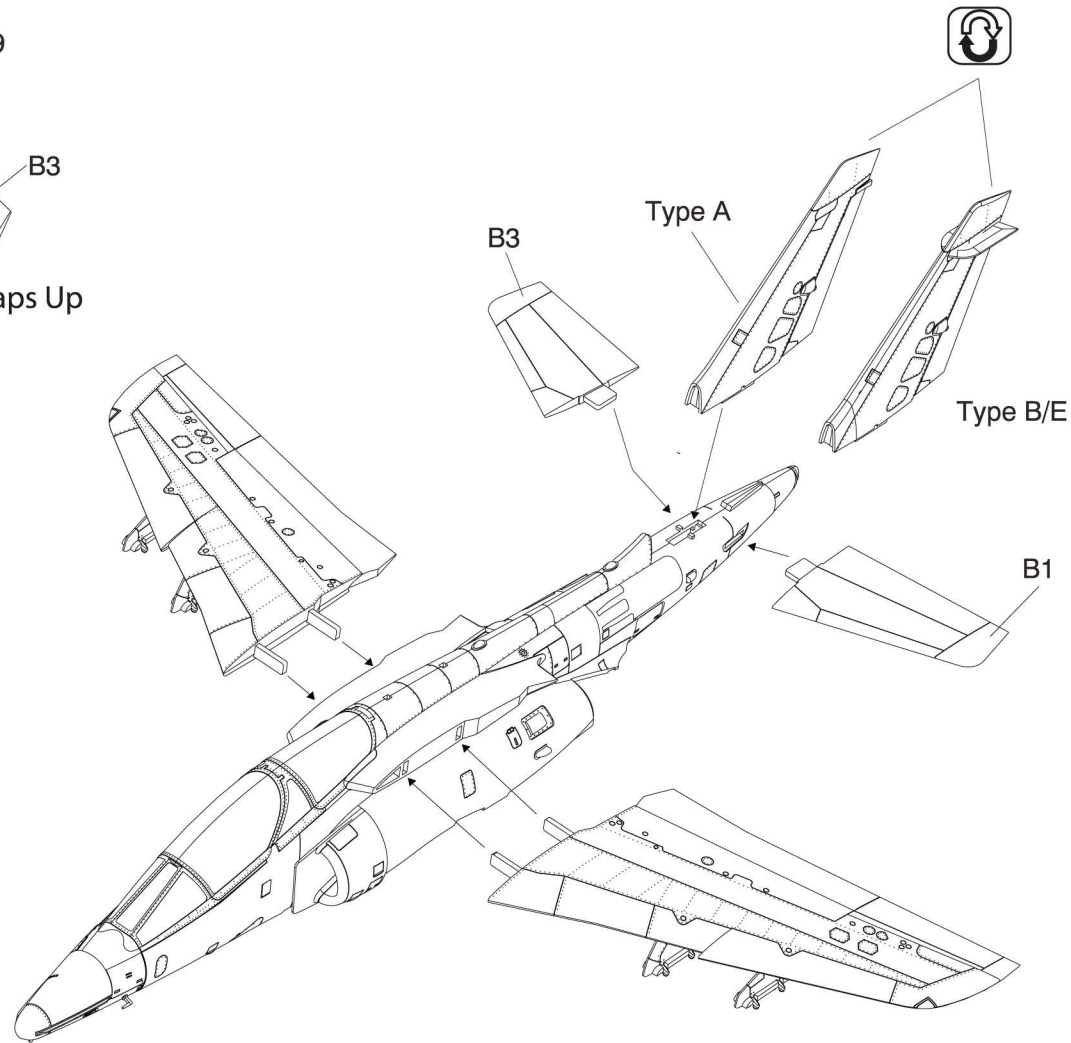
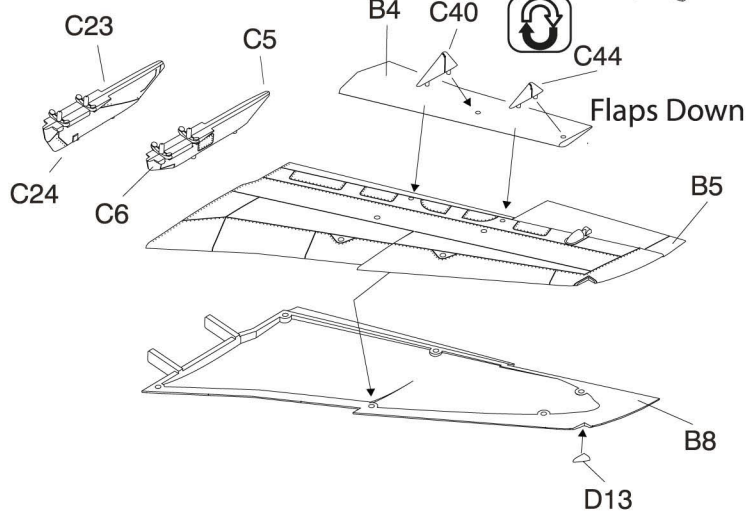
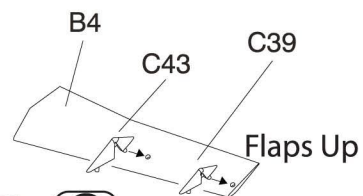
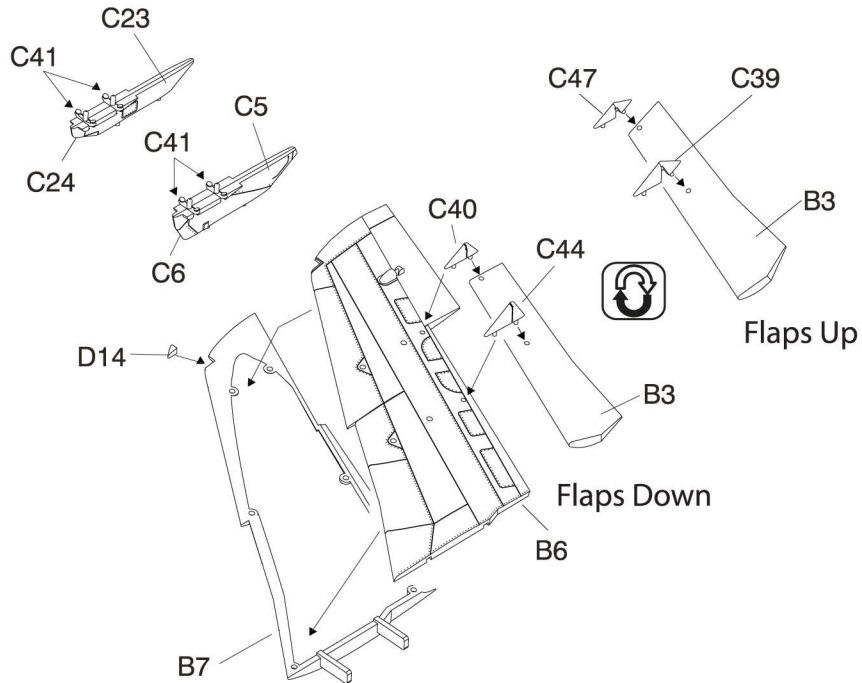


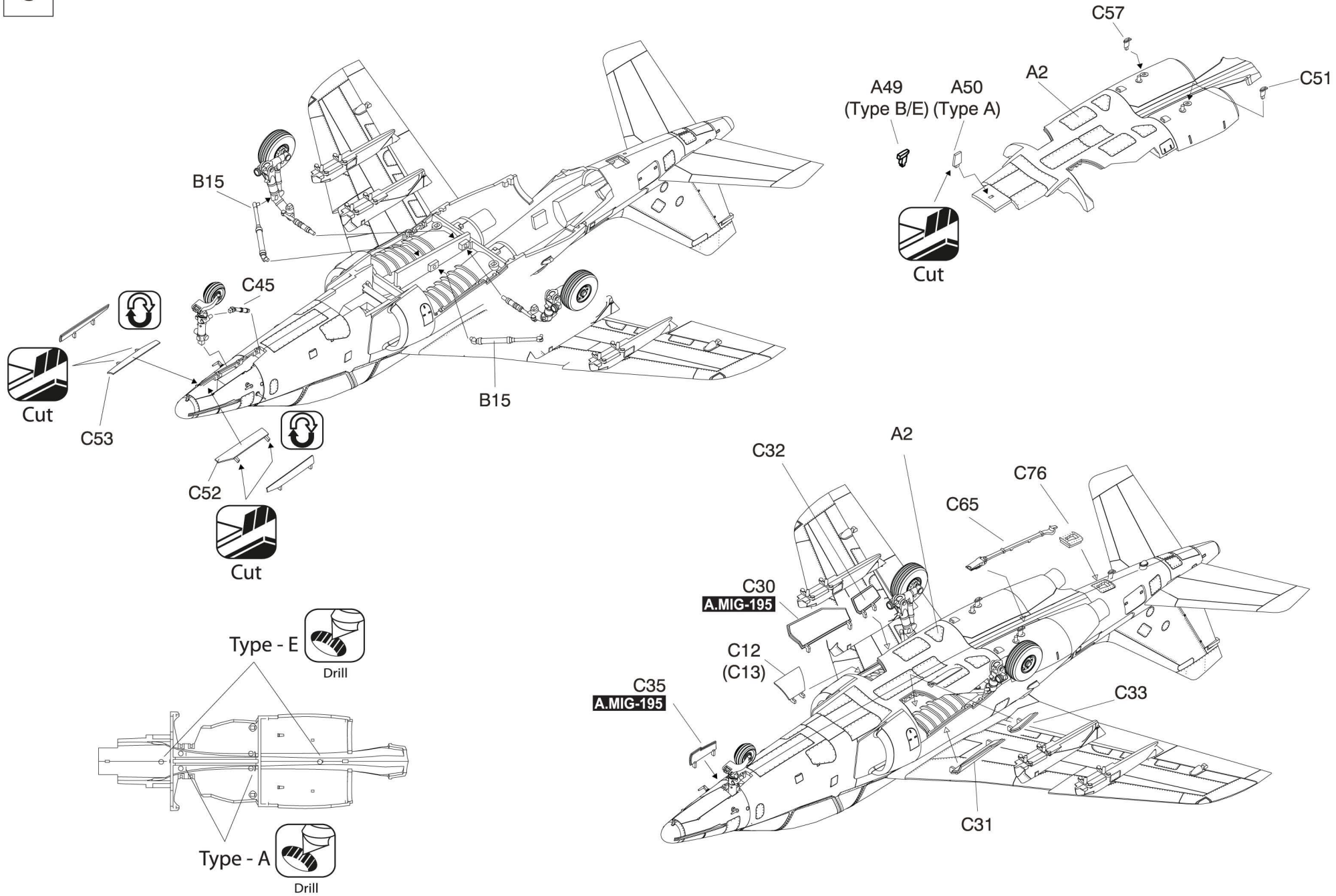
Type - E   
Drill









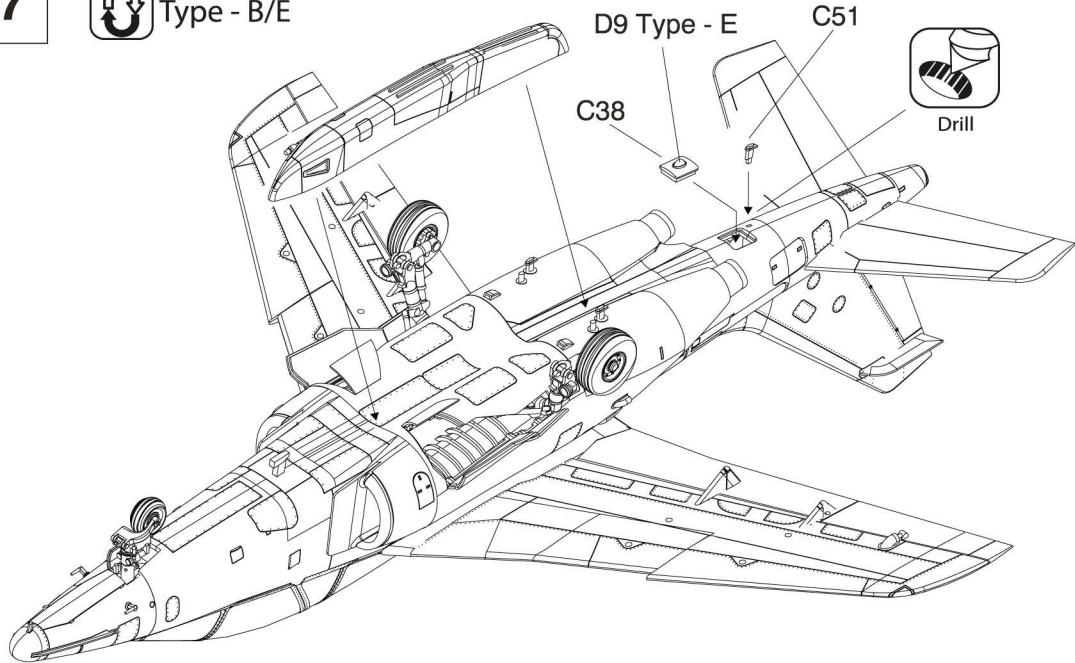




7

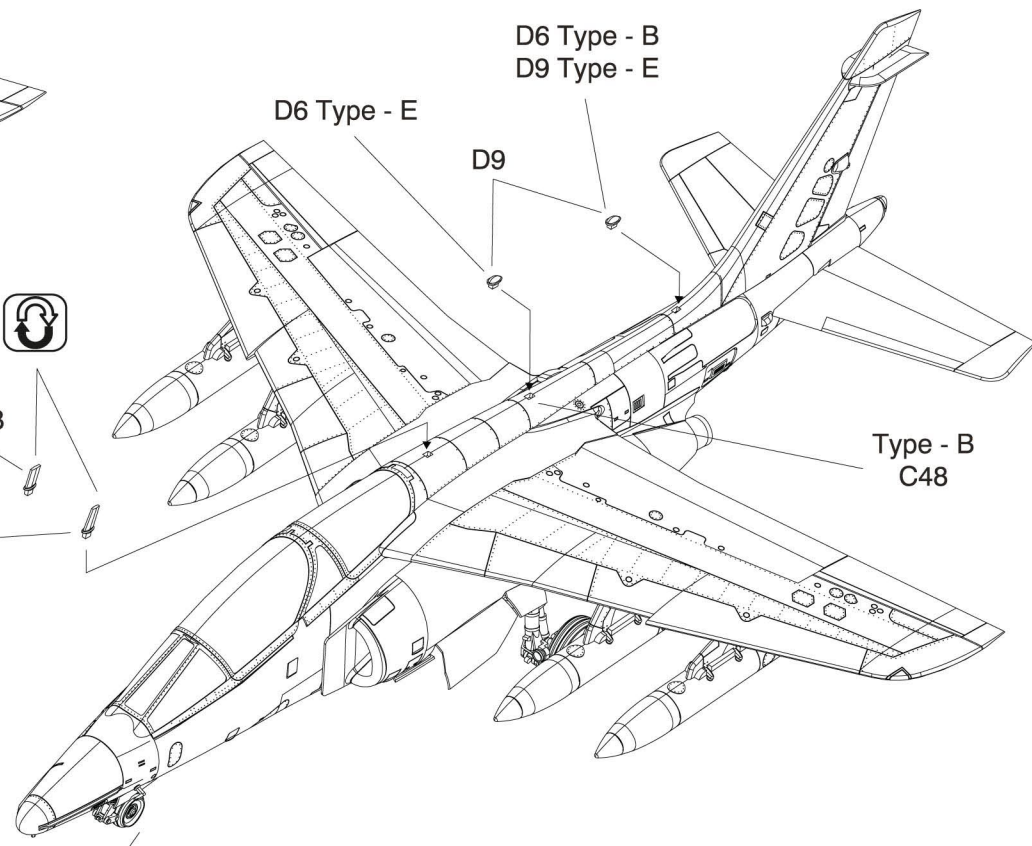
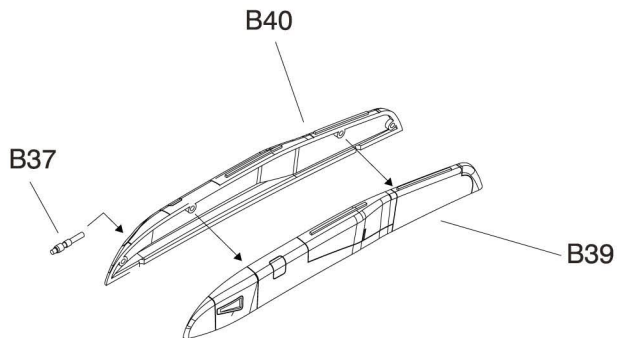


Type - B/E



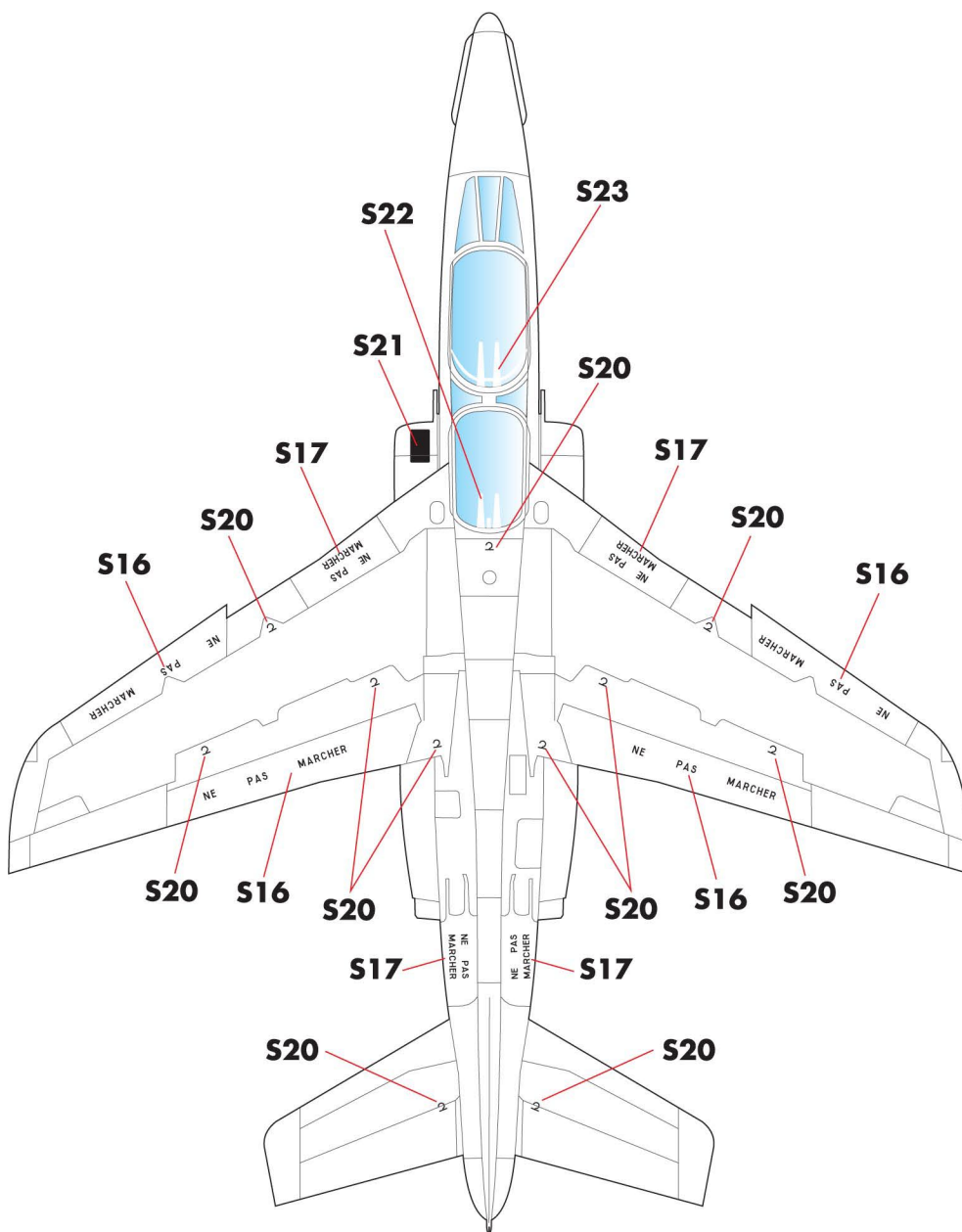
C50  
Type - B

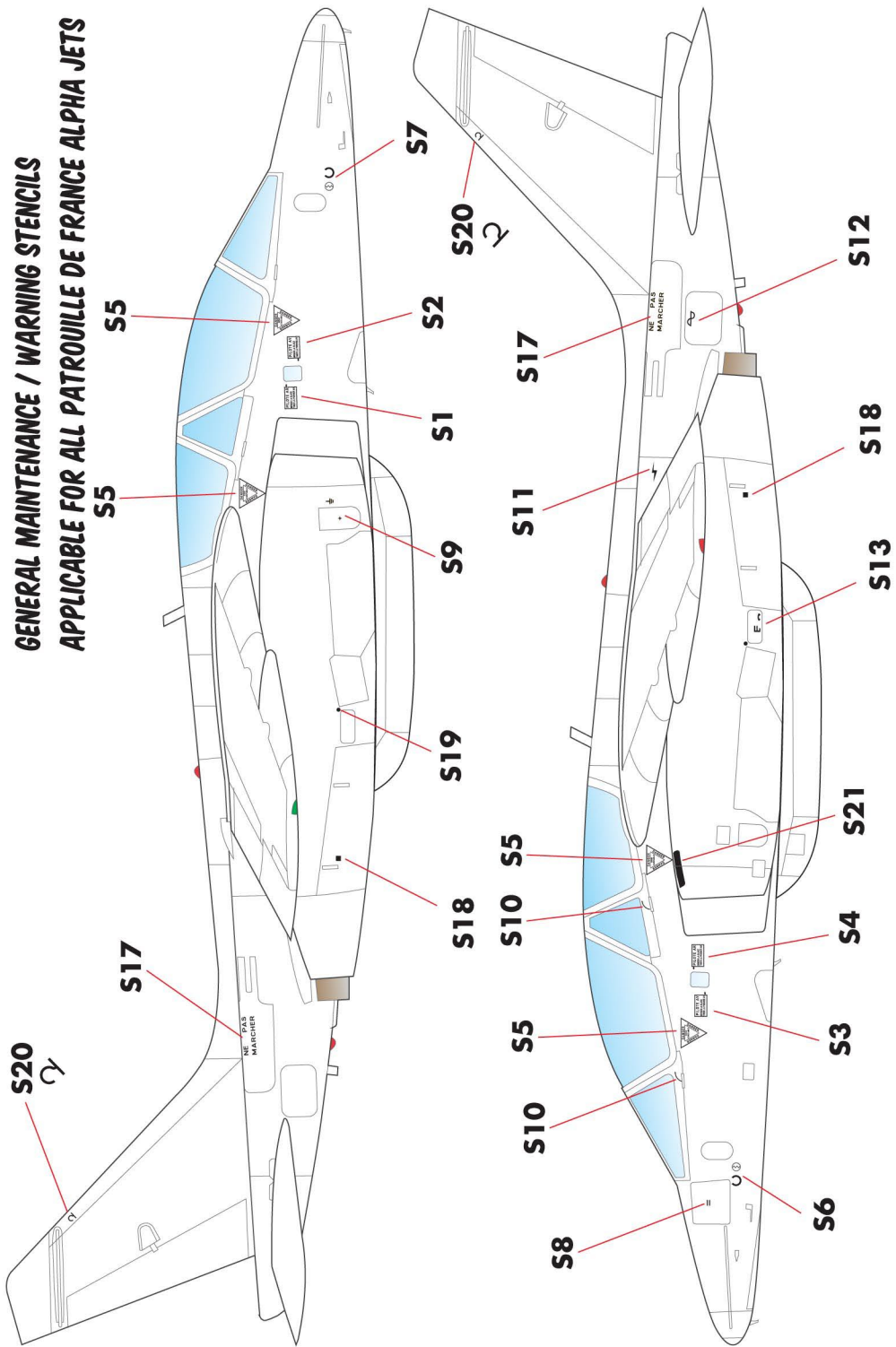
C42  
Type - E



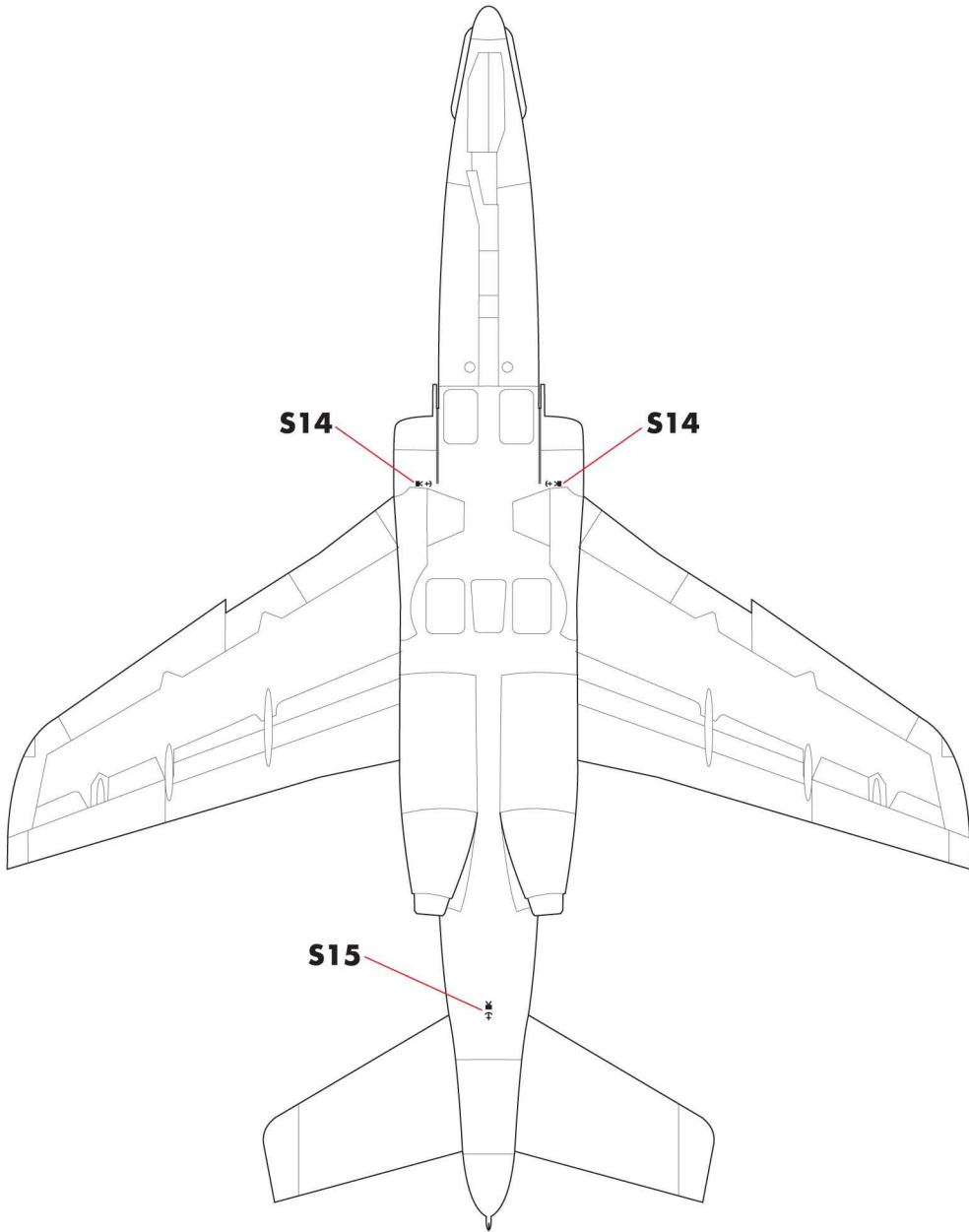
P10

**TOP VIEW**

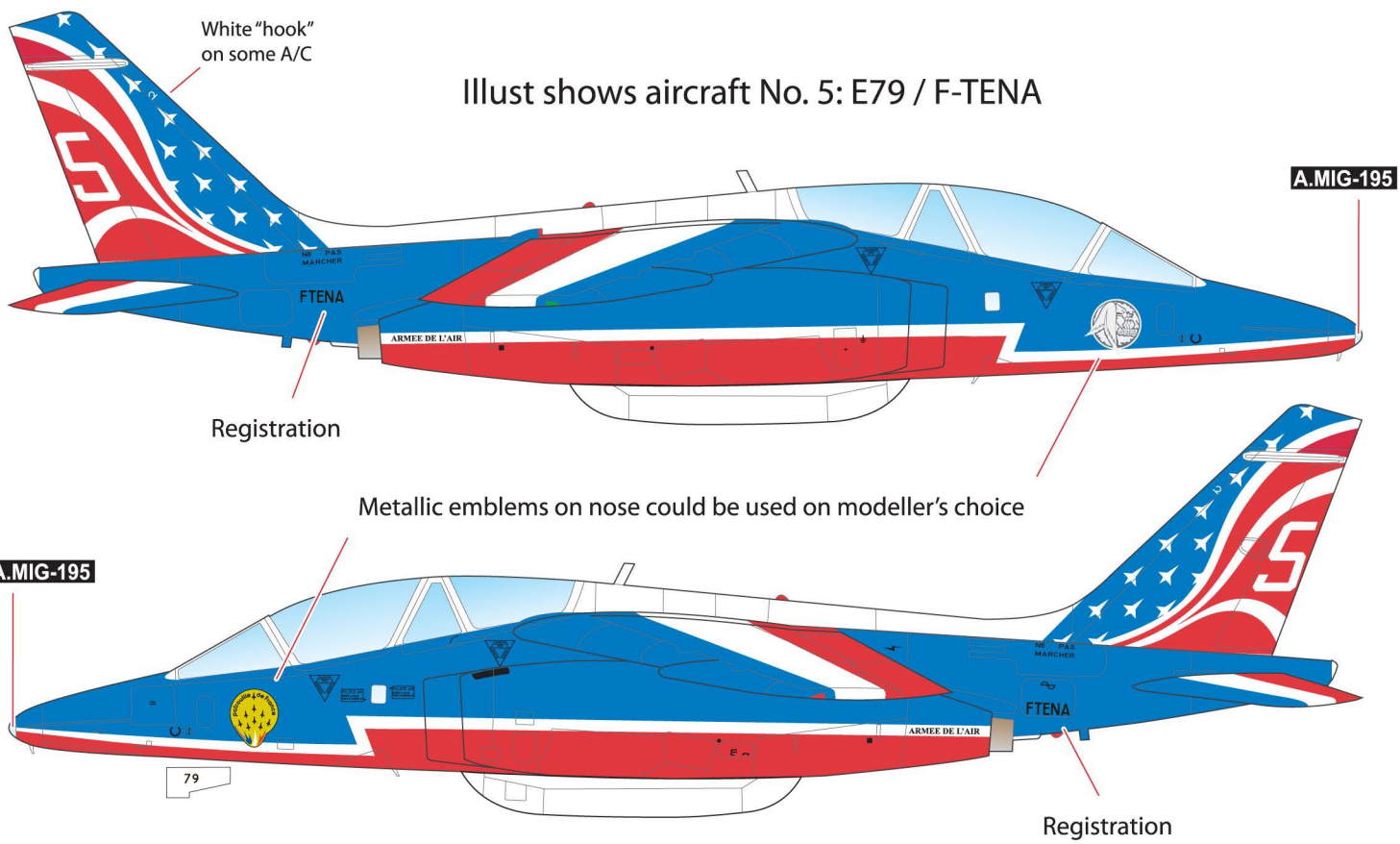




**BOTTOM VIEW**



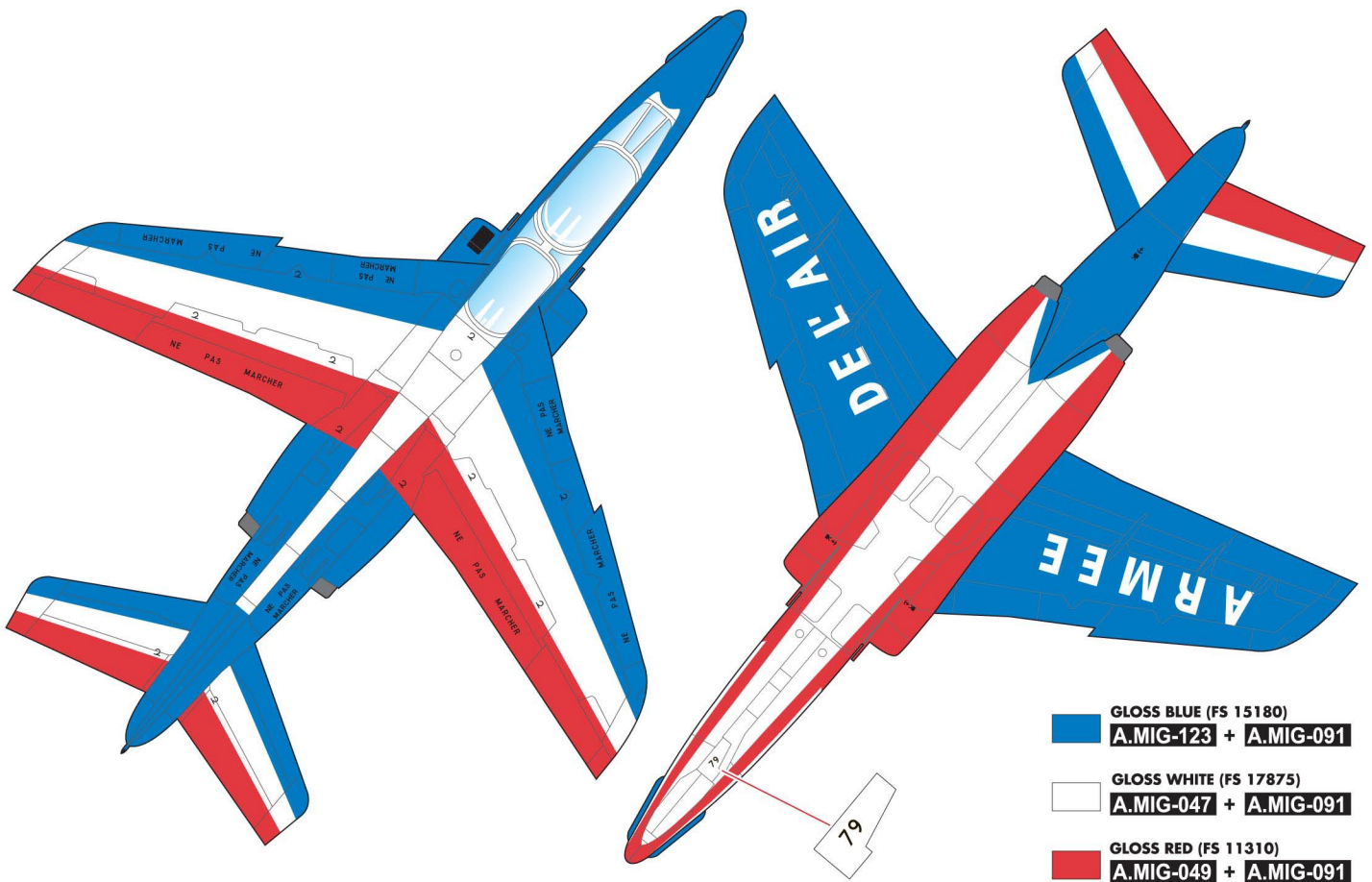
Alpha Jet, Patouille de France, 2017 livery for US tour.



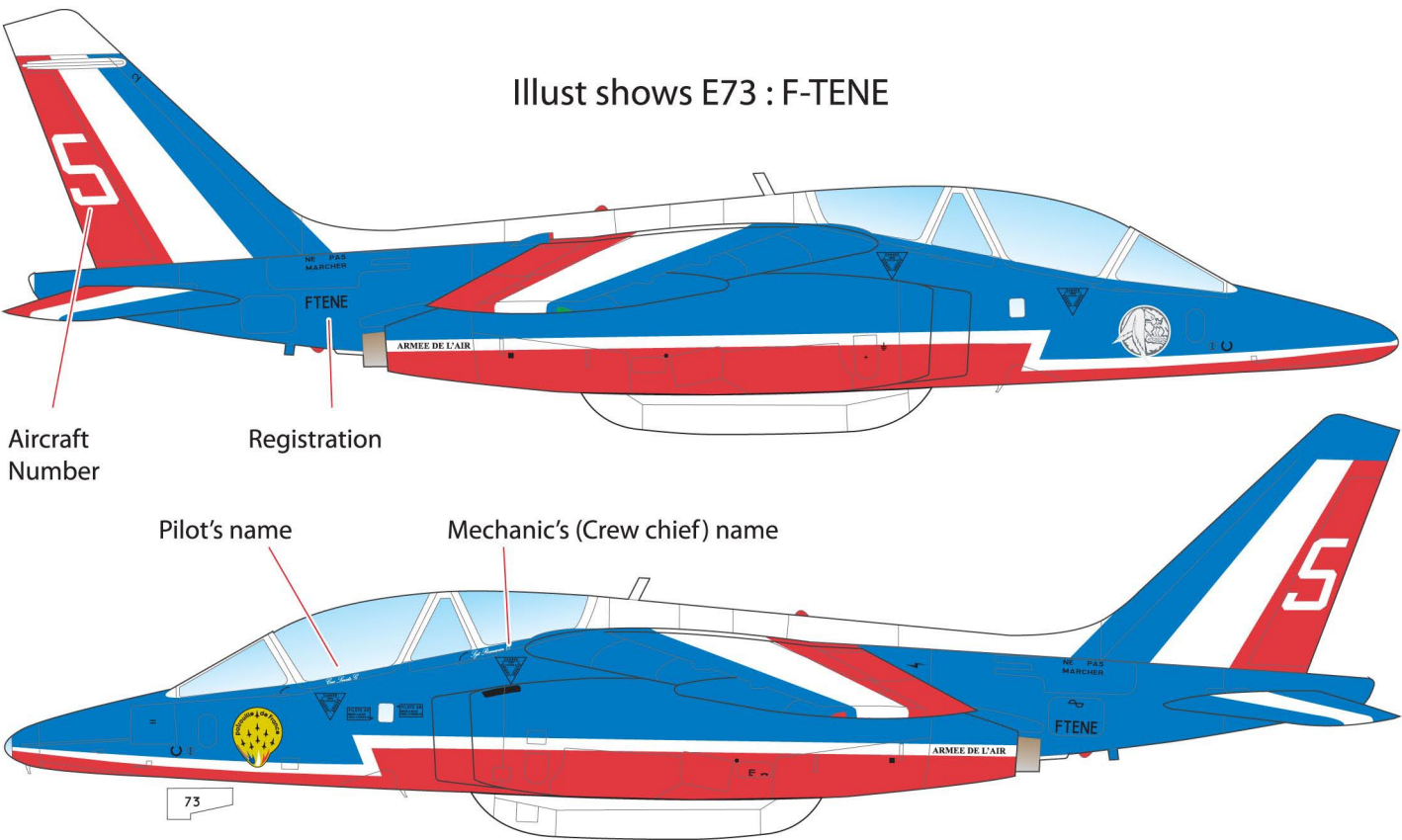
For the US tour of Mar/Apr 2017, a new livery inspired by US flag has been applied on the tail.

The serials and registration numbers have been confirmed on following aircraft:

0: E114/F-TERR, 2: E46/F-UHRF, 5: E79/F-TENA, 7: E152/F-UHRT, 9: E146/F-UHRR.



Illust shows E73 : F-TENE



Markings for Patrouille de France Aircraft of 2013 season (as seen in June 2013)

Aircraft	0	1	2	3	4	5	6	7	8	9
Serial	94	114	46	95	166	73	88	163	44	158
Registration	F-TERH	F-TERR	F-UHRF	F-TERQ	F-UHRW	F-TENE	F-TELL	F-TERB	F-UHRE	F-TERF
Pilot	P1	P2	P3	P4	P5	P6	P7	P8	P9	P10
Mechanic	M1	M2	M3	M4	M5	M6	M7	M8	M9	M10

•40th anniversary of Patrouille de France special scheme (1993)

•50th anniversary of the end of WW II (1995)

•60th anniversary of Patrouille de France special scheme (2013)

