

RESIN PARTS

- 1. Tub
- 2. Front Seat C-2
- 3. Rear Seat C-2
- 4. MB Seat (x2)
- 5. Canopy Ejection Cartridge (x4)
- 6. Rudder Pedals (x2)
- 7. Canopy Lock (x2)
- 8. Seat Handle (x2)
- 9. Throttle (x2)
- 10. Stick (x2)
- 11. Leg Restraining Plates (x4)
- 12. Front Instrument Panel
- 13. Rear Instrument Panel
- 14. Front Coaming
- 15. Rear Coaming
- 16. Front Seat Rail - L
- 17. Front Seat Rail - R
- 18. Rear Seat Rail - L
- 19. Rear Seat Rail - R
- 20. Rear Seat Head Back Plate
- 21. Front Side Wall - L
- 22. Rear Sidewall - L
- 23. Front Sidewall - R
- 24. Rear Sidewall - R

ADDITIONAL RESIN PARTS Deluxe Set

- 25. Circuit Breaker Bay
- 26. Engine Section
- 27. Hydraulic Bay
- 28. Circuit Breaker Bay Door
- 29. Circuit Breaker Bay Access Hatch
- 30. Ram Air Compartment
- 31. Ram Air Motor
- 32. Ram Air Blade (x3)
- 33. Ram Air End Piece
- 34. Ram Air Door
- 35. Oxygen Bay
- 36. Oxygen Bay Door



Item # CS48015 - page 1 of 2

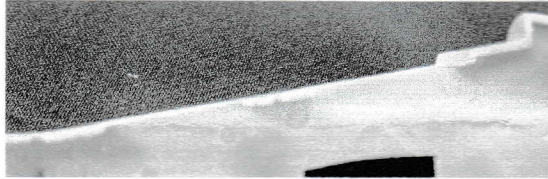
TF-104G/J STARFIGHTER

cockpit set (Deluxe set) for Hasegawa kit

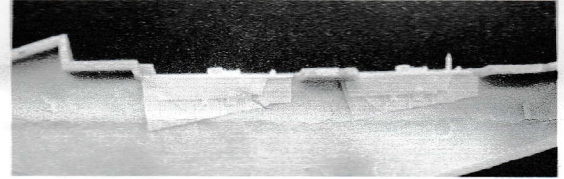
1/48 scale

Copyright © V.M.D. Studios, Inc. 2006

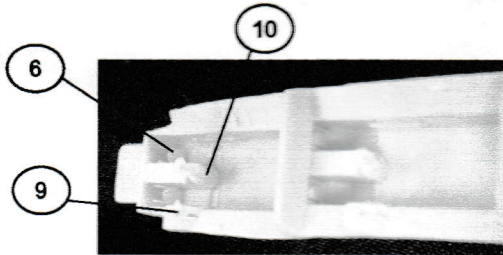
It is important when working with resin parts to test fit several times and trim where necessary before gluing into place.



Remove part of canopy sill until flush with inside of fuselage half.

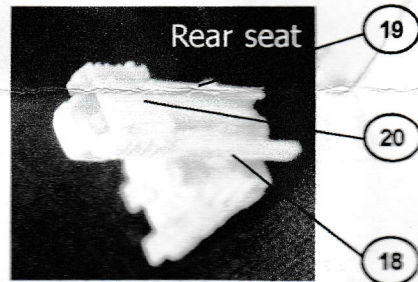
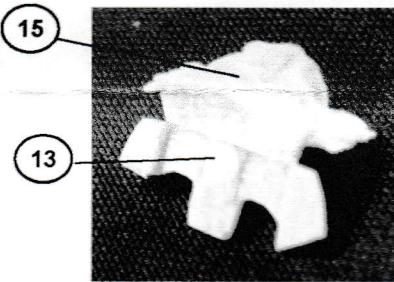
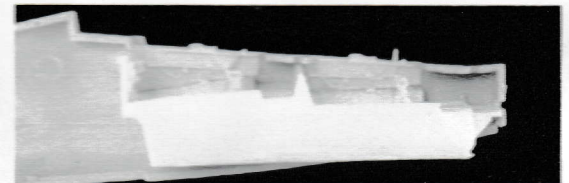


Align all four side walls and glue inside both sides of fuselage. Test fit with tub before gluing

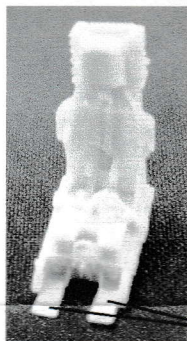
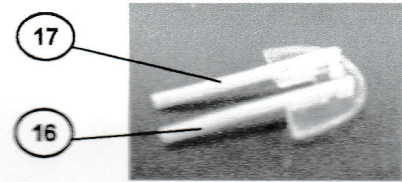


Remove (sand) bottom carrier from tub as much as possible without perforating the cockpit floor.

Repeat #9 and #10 in rear cockpit

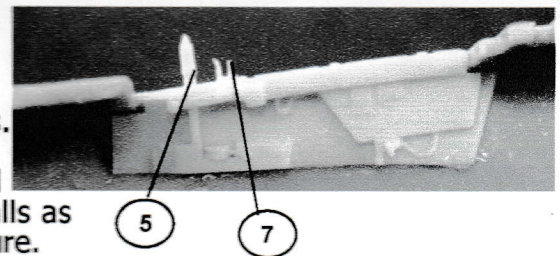


Use front seat rails as indicated on Hasegawa's instructions. Mount as shown with clear part Y8.

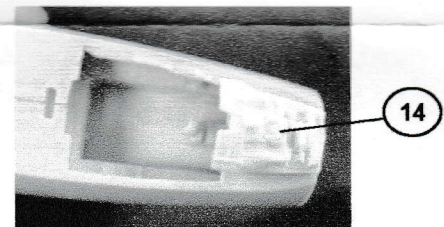


Since a lot of detail is incorporated to also display the seat outside the cockpit (by choice), a tight fit is possible. If by any chance a problem might occur while installing the seat into the tub, remove or sand gently some detail from both sides of the seat. Once the seat is mounted into the cockpit, this will not be visible.

Glue #5 on each of the four side walls. Glue #7 on both front and rear R side walls as shown in picture.



A choice is given to build either American, Belgian, Swedish, the Netherlands and other European variants by using the C-2 seat. The MB seat is included to build German and/or other variants.



ACKNOWLEDGEMENTS:

As always, we thank the Machmaster and Lonnie Berry for their continued support

BEST REFERENCES:

- Starfighter - Geschiedenis van de Lockheed F-104G in dienst van de NATO - R. Verhegghen
- Lock On #1 - F-104 G/J Starfighter - Verlinden Publications
- Detail & Scale - F-104 Starfighter - Bert Kinzey

PAINTING INSTRUCTIONS
Paint cockpit according to kit instructions unless otherwise indicated

Master pattern and instructions by Jef Verswyvel.

COMBAT SERIES

RESIN PARTS

- 1. Tub
- 2. Front Seat C-2
- 3. Rear Seat C-2
- 4. MB Seat (x2)
- 5. Canopy Ejection Cartidge (x4)
- 6. Rudder Pedals (x2)
- 7. Canopy Lock (x2)
- 8. Seat Handle (x2)
- 9. Throttle (x2)
- 10. Stick (x2)
- 11. Leg Restraining Plates (x4)
- 12. Front Instrument Panel
- 13. Rear Instrument Panel
- 14. Front Coaming
- 15. Rear Coaming
- 16. Front Seat Rail - L
- 17. Front Seat Rail - R
- 18. Rear Seat Rail - L
- 19. Rear Seat Rail - R
- 20. Rear Seat Head Back Plate
- 21. Front Side Wall - L
- 22. Rear Sidewall - L
- 23. Front Sidewall - R
- 24. Rear Sidewall - R

ADDITIONAL RESIN PARTS Deluxe Set

- 25. Circuit Braker Bay
- 26. Engine Section
- 27. Hydraulic Bay
- 28. Circuit Braker Bay Door
- 29. Circuit Braker Bay Access Hatch
- 30. Ram Air Compartment
- 31. Ram Air Motor
- 32. Ram Air Blade (x3)
- 33. Ram Air End Piece
- 34. Ram Air Door
- 35. Oxygen Bay
- 36. Oxygen Bay Door



Item # CS48015 - page 2 of 2

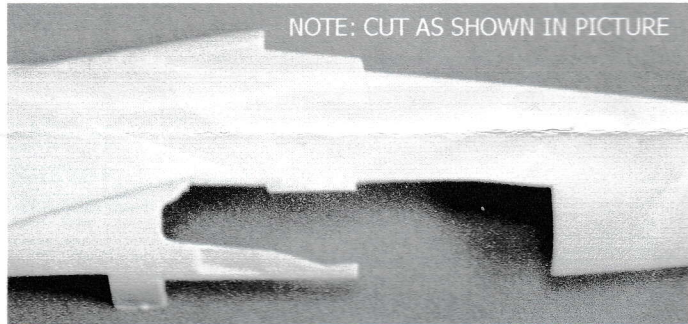
TF-104G/J STARFIGHTER

cockpit set (Deluxe set) for Hasegawa kit

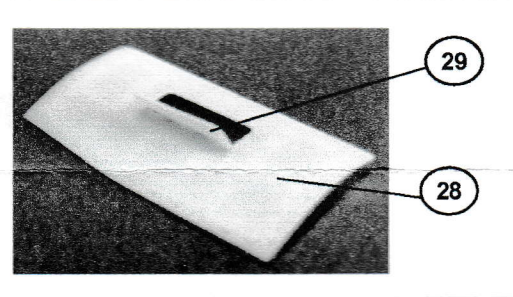
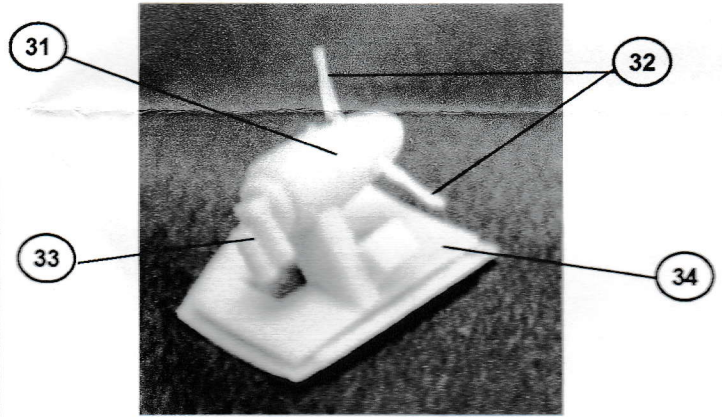
1/48 scale

Copyright © V.M.D. Studios, Inc. 2006

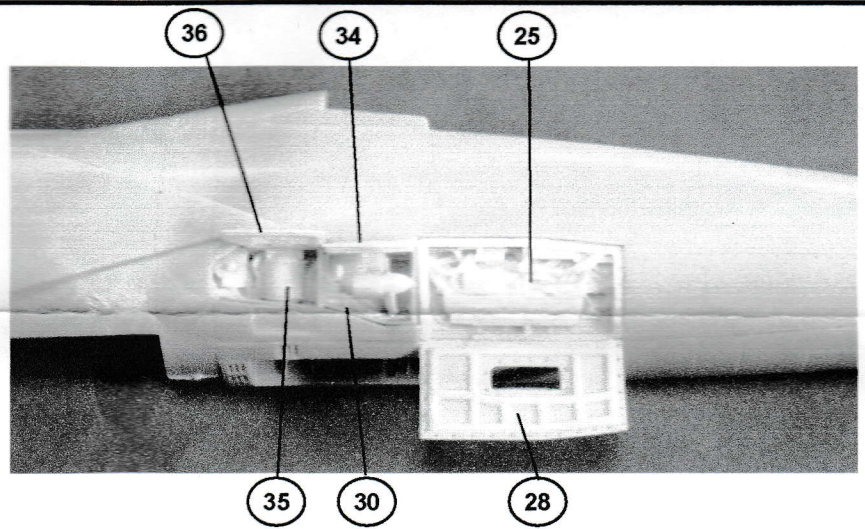
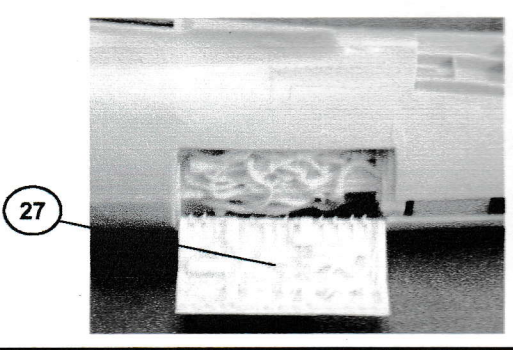
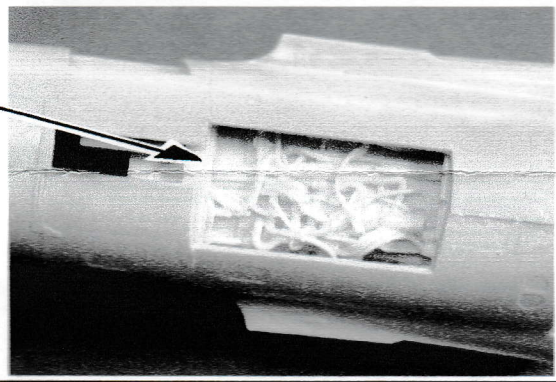
It is important when working with resin parts to test fit several times and trim where necessary before gluing into place.



To ensure a tight fit of the resin compartments, when cutting the fuselage compartment doors, make sure to cut and file gradually. Start withing the panel lines of each compartment door and work your way towards the edge of the panel. Test fit the selected compartments several times before gluing.



SAND DOWN AND CUT AS SHOWN.



IMPORTANT:

Sand the back of each compartment as much as possible without perforating it. Constantly verify fit with front wheel bay (Hasegawa part #M11) before gluing each compartment.

ACKNOWLEDGEMENTS:

As always, we thank the Machmaster and Lonnie Berry for their continued support

BEST REFERENCES:

Starfighter - Geschiedenis van de Lockheed F-104G in dienst van de NATO - R. Verhegghen
 Lock On #1 - F-104 G/J Starfighter - Verlinden Publications
 Detail & Scale - F-104 Starfighter - Bert Kinzey

PAINTING INSTRUCTIONS
 Paint cockpit according to kit instructions unless otherwise indicated

Master pattern and instructions by Jef Verswyvel.

COMBAT SERIES