



Bronco Models

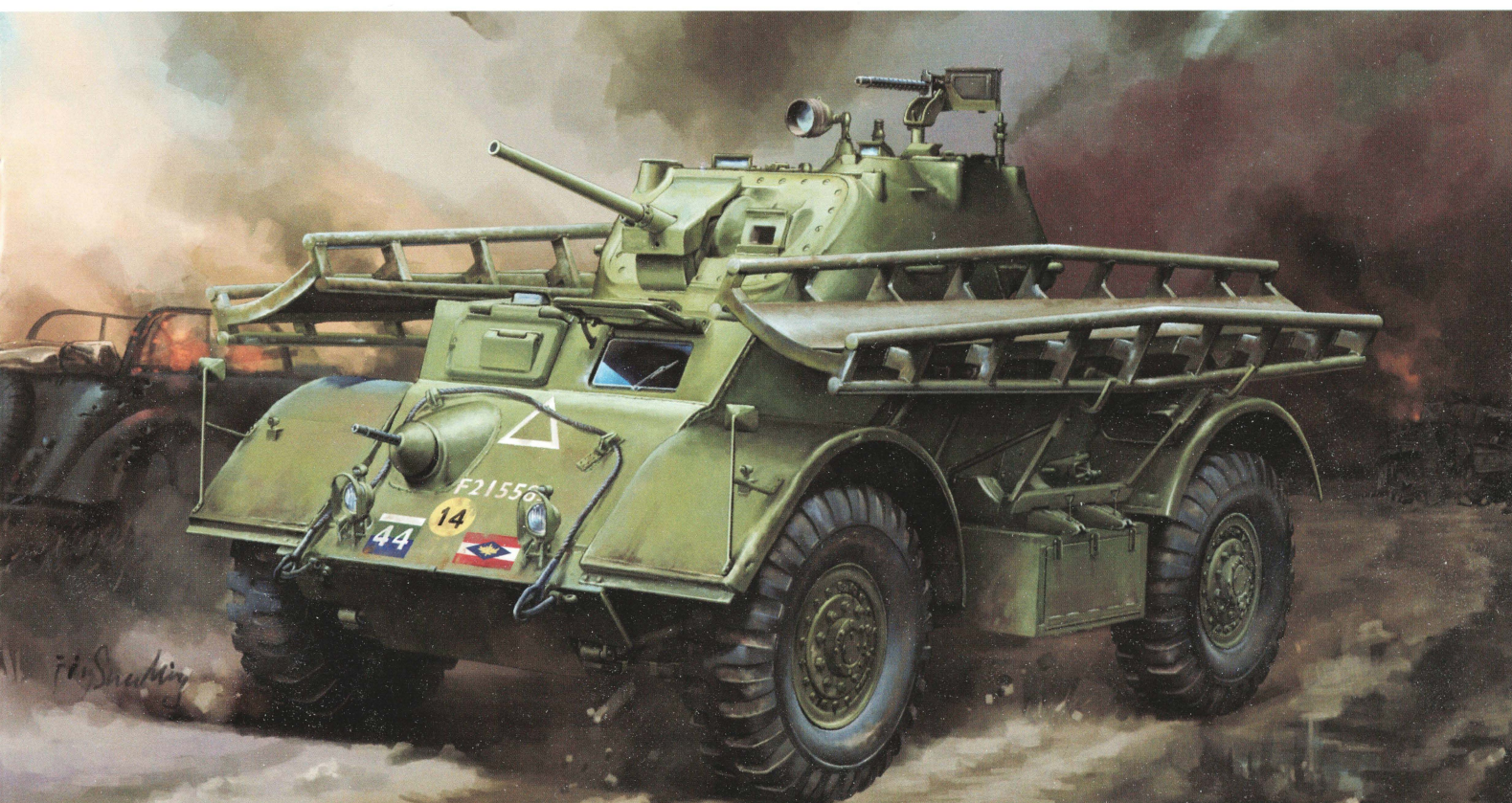
Kit No. CB35115


# T17E1 STAGHOUND MK.I

**Armored Car (Late Production) with 12 Feet Assault Bridge**


猎犬MK.I型装甲车(后期型)加12英尺突击桥

**1/35 Scale**



In some theatres, including Italy and North West Europe, poor terrain dictated the use of  assault bridging equipment. In 1944 tests were carried out whereupon pairs of the "Tracked Bridge 12 foot, No3, Class 9" bridging trackway were fitted to Staghound Armoured Cars, using support brackets fixed to the fenders and side stowage boxes.

These assault bridges, simply constructed from steel plate, tubes and box section uprights, could be detached and used to cross ditches, streams, dried up river beds and other obstacles. Normally the bridges were fitted to one vehicle per troop, and upon reaching obstacles the crews would bridge the gaps by simply positioning the lengths the correct distance apart for the vehicle, and drive the vehicles over .

在一些战场，包括意大利和西北欧，由于地势较差，势必要求使用突击桥设备。在1944年，对所  述的“12英尺轨道桥，3号，第9级”架设在猎犬装甲车上面，进行了试验，所支撑托架固定于挡泥板和侧储物箱。

这些突击桥梁，由钢板简单搭建而成，圆管及方管框架构造，可以分离并用于穿越沟渠，溪流，干涸河床和其他障碍。通常情况下，每一组作战部队，有一台车辆安装突击桥梁，并且在到达障碍区域，乘员会简单地定位车辆之间适当的距离，迅速搭建桥梁并驾驶车辆通过。

ILLUSTRATION 图示说明：

CORRECT METHOD FOR APPLYING DECALS :  
正确使用水贴纸的方法:

1. Clean model parts surface with wet cloth.  
将需要贴水贴之部位表面擦干净。
2. Cut out the decal parts and dip them in cold water for 15 ~20 seconds.  
将所需之贴纸剪下泡在清水里约15至20秒。
3. Place it on correct position of the model kit.  
将湿透之贴纸取出置放于正确之位置旁。
4. Slide off the decal from the base paper on to the model kit surface with a cotton stick.  
用棉花棒轻推贴纸表面使其从底纸滑出至模型表面之正确位置。
5. When decal get dry then complete.  
待其自然干透后即完成。

ICON INSTUCTION: 图标说明:

 Open Hole  
钻孔

 Remove  
切除

 x2  
2 Sets needed  
同样的制作二组

 Bend  
曲折

 Optional  
可以选择采用

 Apply Decal  
贴水贴纸

 Instant Glue For Metal  
瞬间接着剂,金属用

 Fill Hole  
把孔填平

 Do not cement  
不用粘合

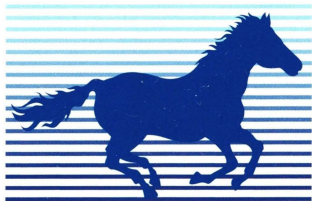
COLOR SUGGESTION: 涂装指引:

Color	涂料表	MR.Hobby	Hobby Color	Humbrol	Tamiya
British Olive	英式橄榄褐	H-52	C-12	163	XF-58
Wood Brown	木棕色	H-37	C-43	/	/
Steel	黑铁色	H-18	C-28	201	X-10
Burnt Lron	烧铁色	H-76	C-41	/	X-56:3+XF-64:1
Flat White	消光白	H-11	C-62	34	XF-2
Silver	银色	H-8	J-8	11	X-11
Clear Red	透明红	H90	C-47	160	X-27
Flat Black	消光黑	H-12	C-33	133	XF-1
Tire Black	轮胎黑	/	C-137	/	X-85
Leather brown	皮革棕	/	C-41	62	XF-64

READ BEFORE ASSEMBLING: 组装必读:

- Carefully Study instruction before assembling. 组装前请阅读清楚制作指引。
- Keep plastic model glue and tools away from children. 胶水,油漆及工具勿让小孩接触。
- Do not use cement or paint near open flame or sparks. 胶水及油漆勿接触火种。
- Do not work in closed room. 勿在密封地方制作模型。

Printed in China



BRONCO

Bronco models

Copyright © 2017

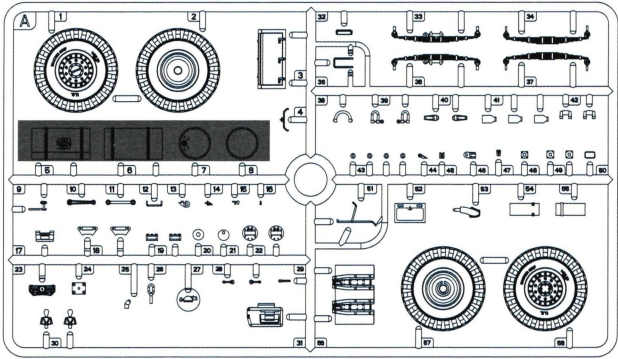
Made in China

中国制造

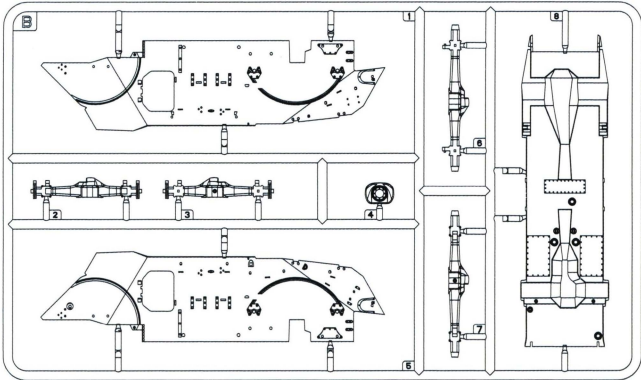
No use parts  
不要部件



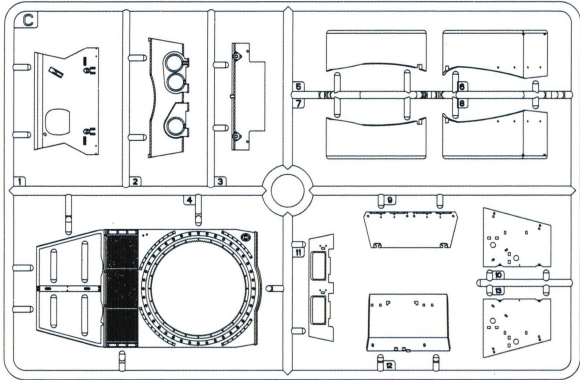
Ⓐ X 2



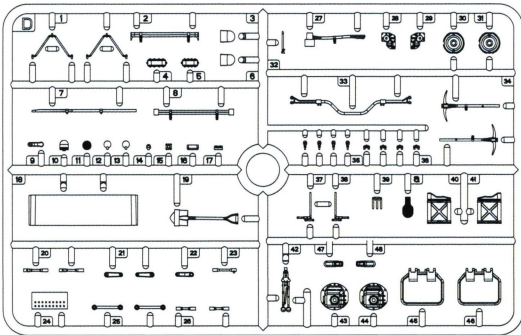
Ⓑ X 1



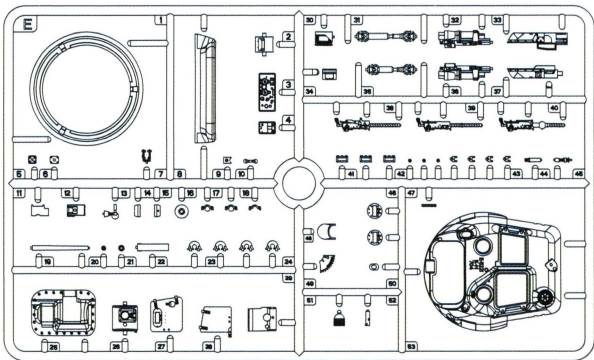
Ⓒ X 1



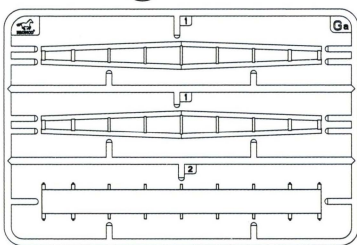
Ⓓ X 1



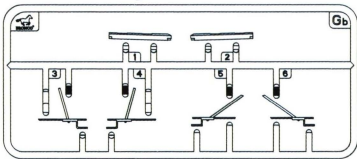
Ⓔ X 1



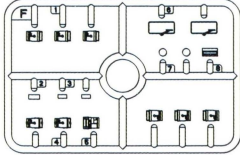
Ⓔa X 2



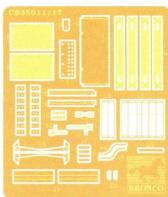
Ⓔb X 1



Ⓕ X 1



Ⓖ X 1



Ⓖa X 1



DECAL x 1



String  
绳子

Ⓖ



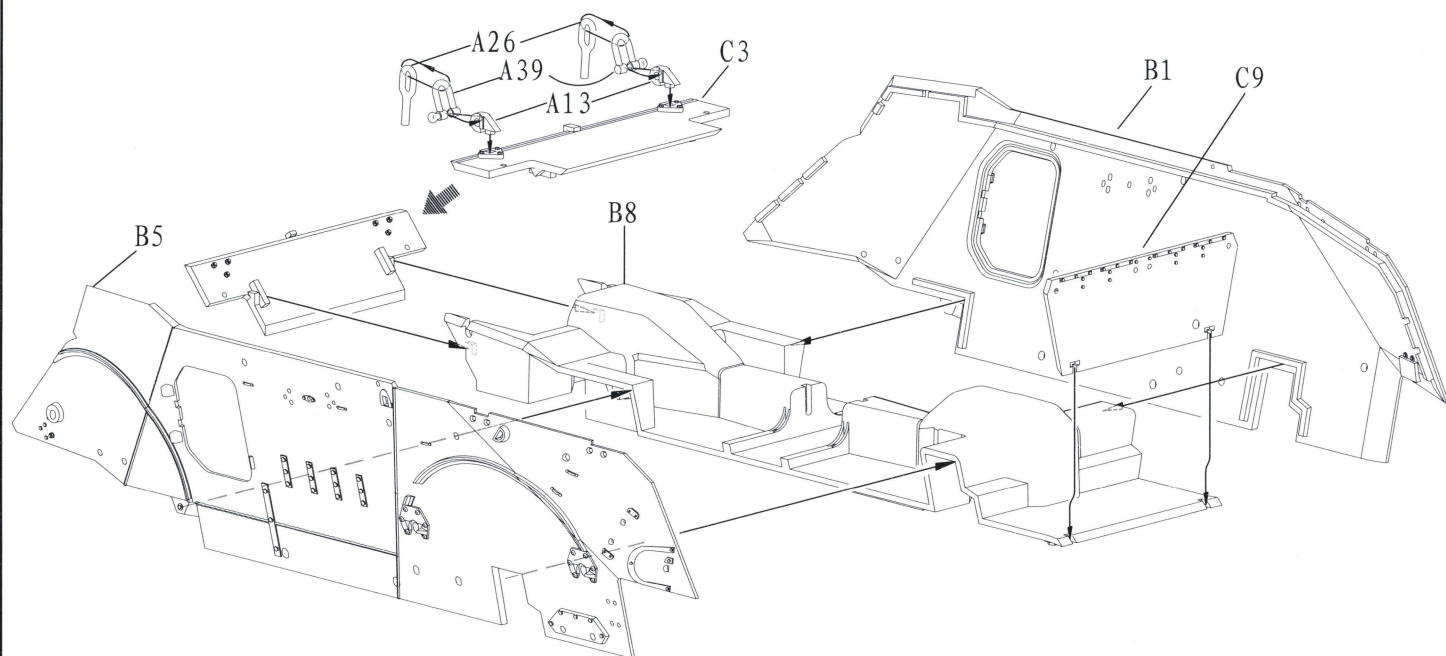
CB35115

1

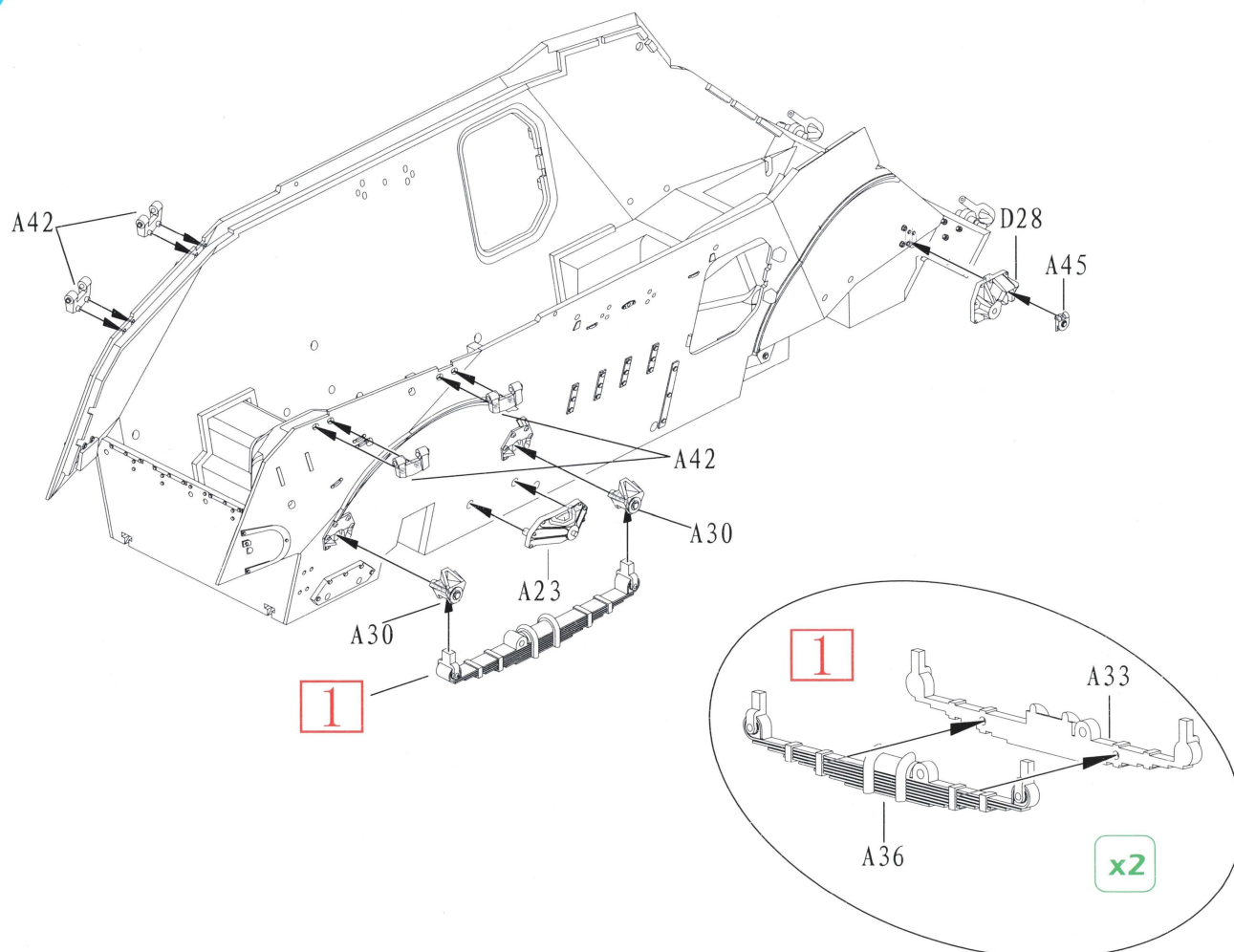
Caution:

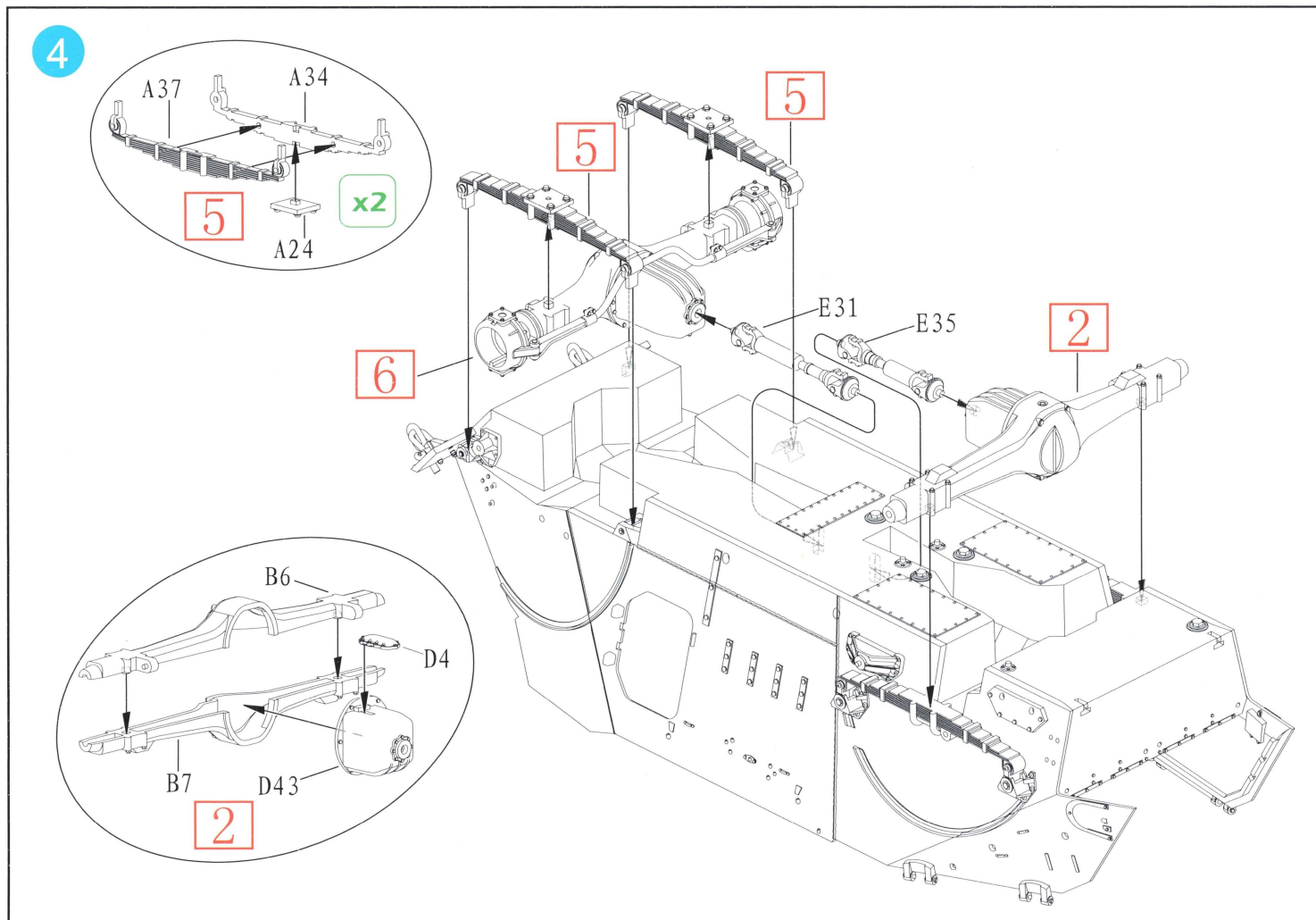
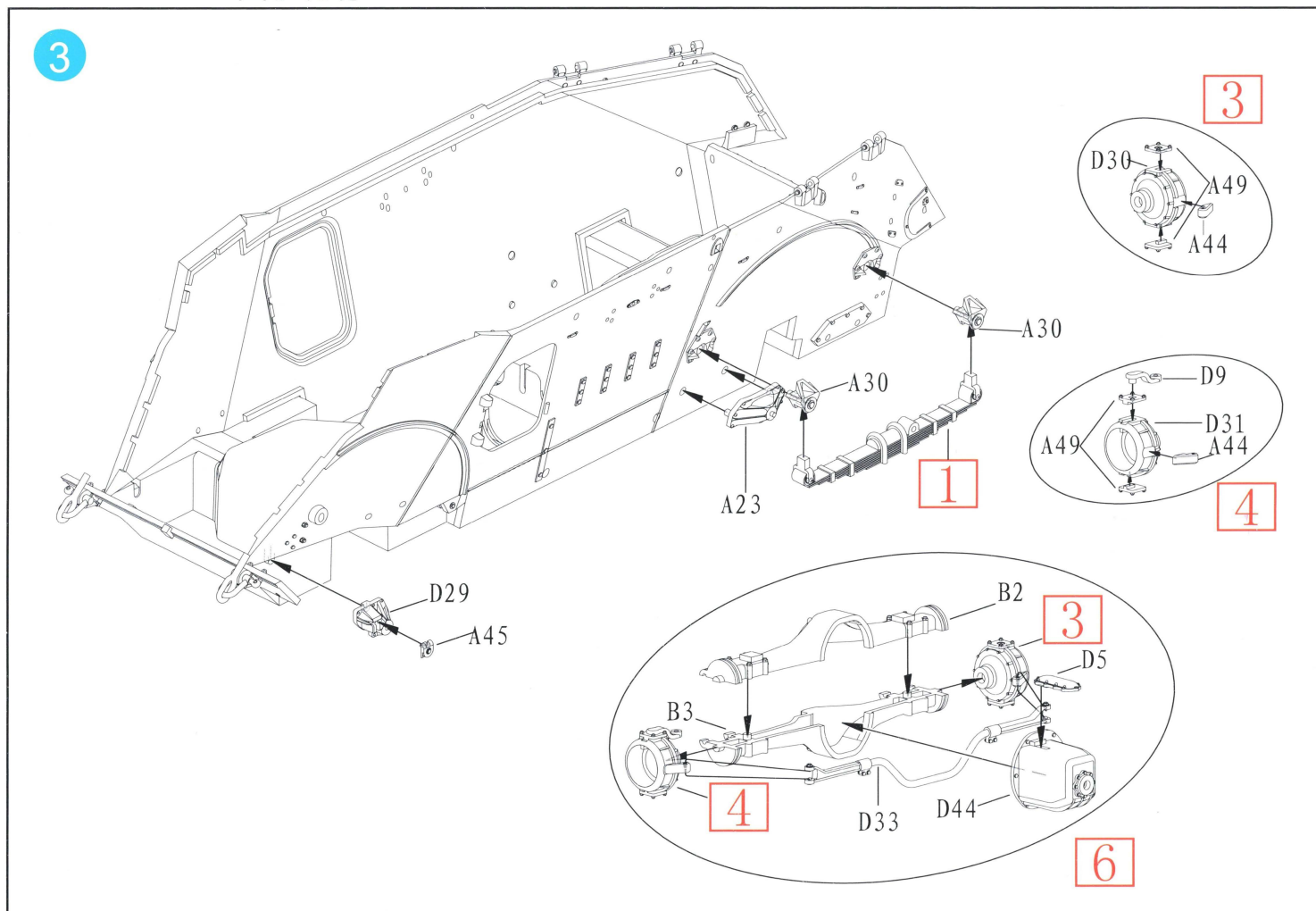
This kit contains a lot of small accurate parts, please carefully to read before to assembly.

此套件包含不少精细零件，请在制作前先翻阅说明书了解清楚

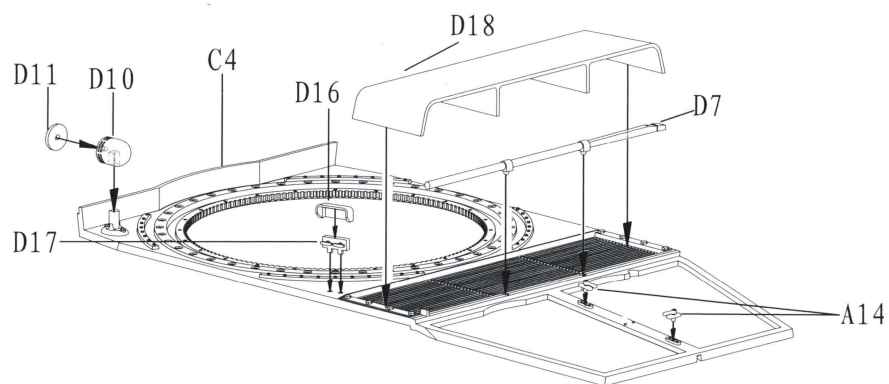


2

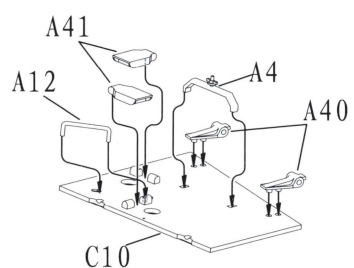




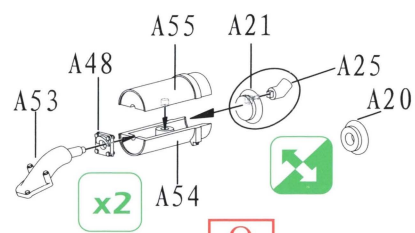
5



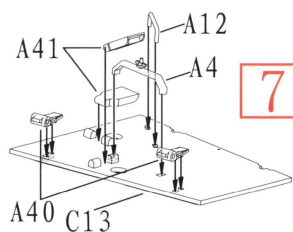
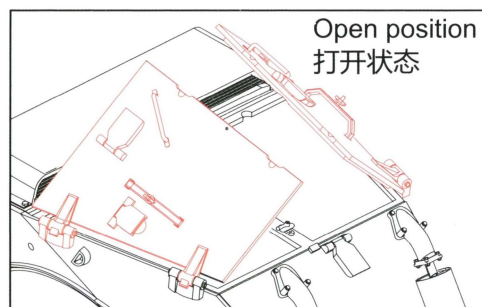
6



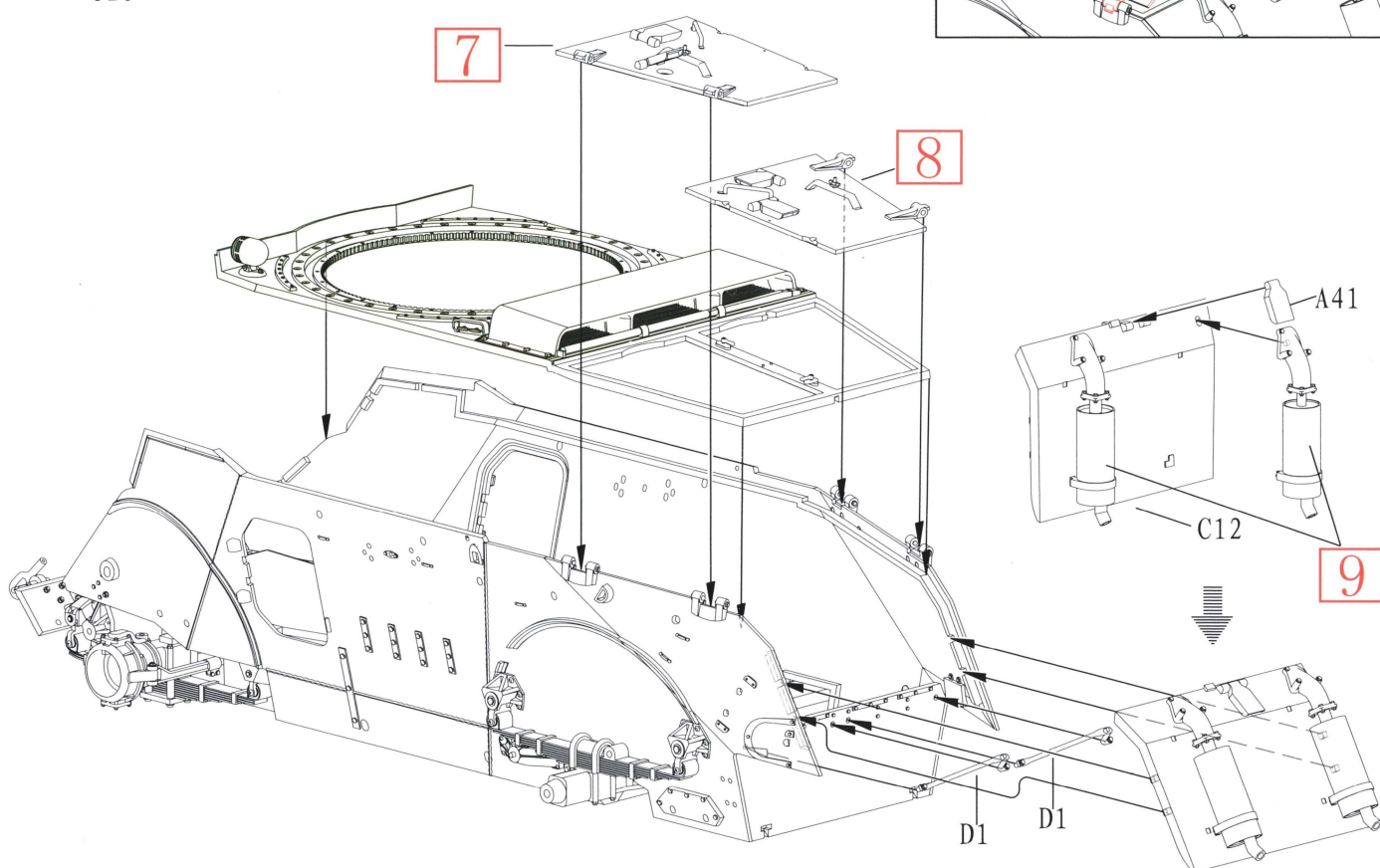
8



9



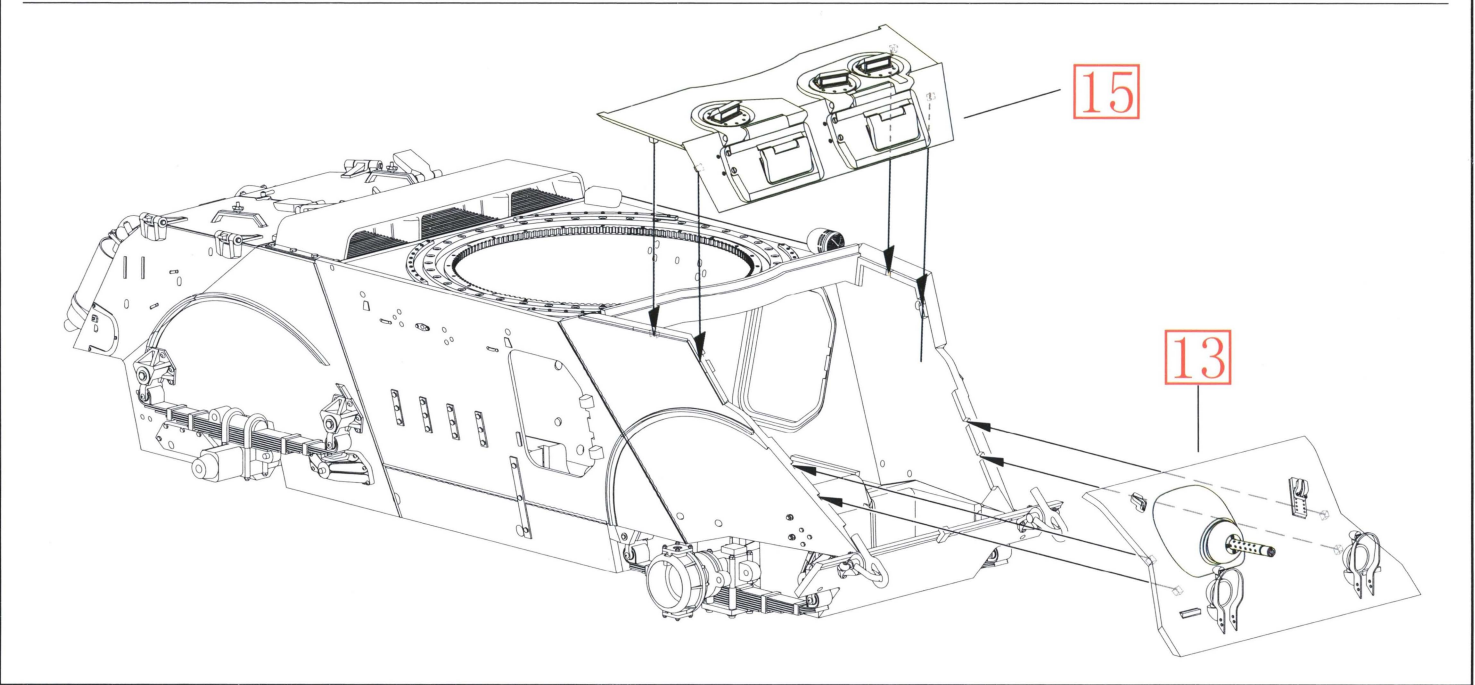
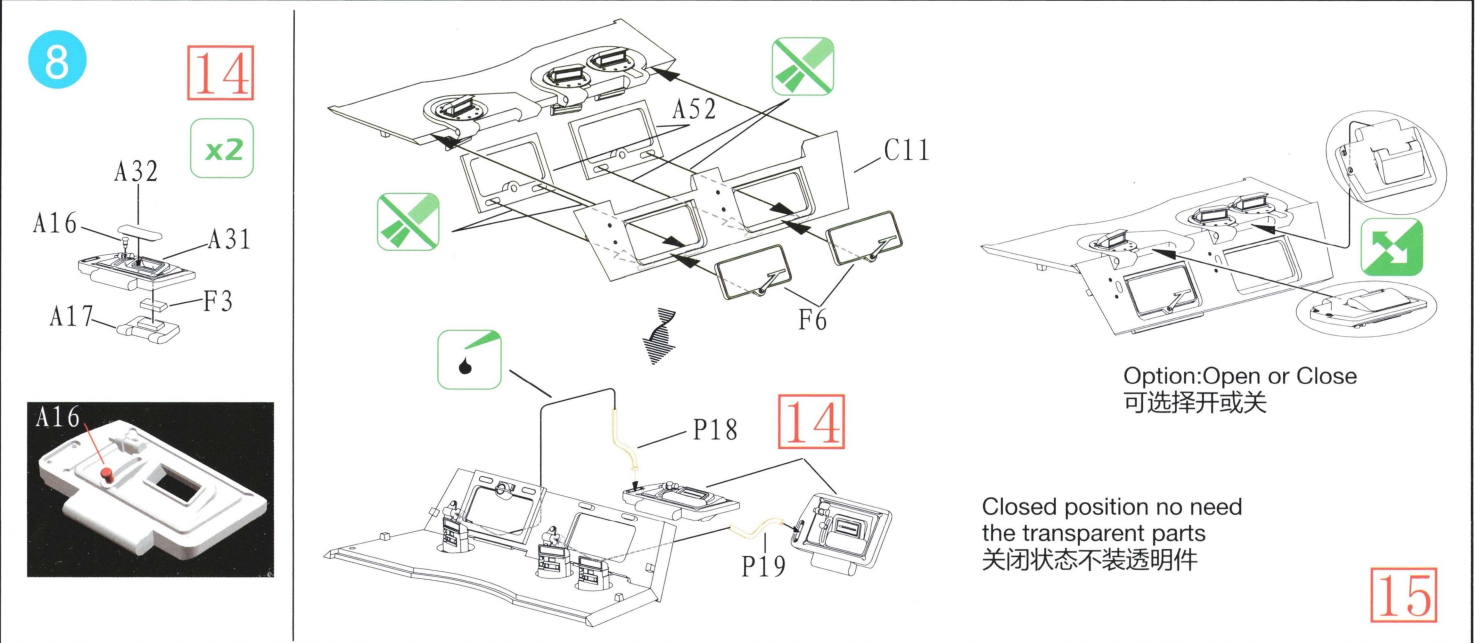
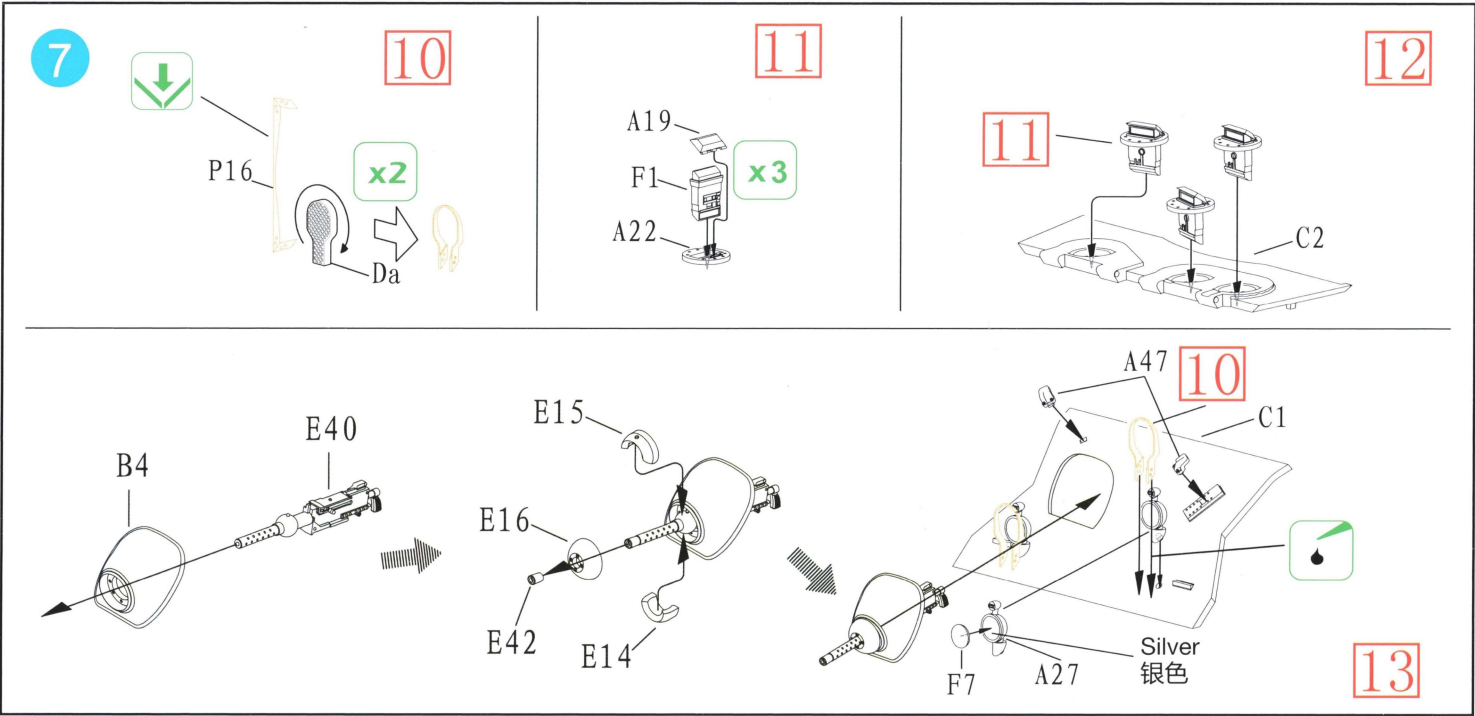
7



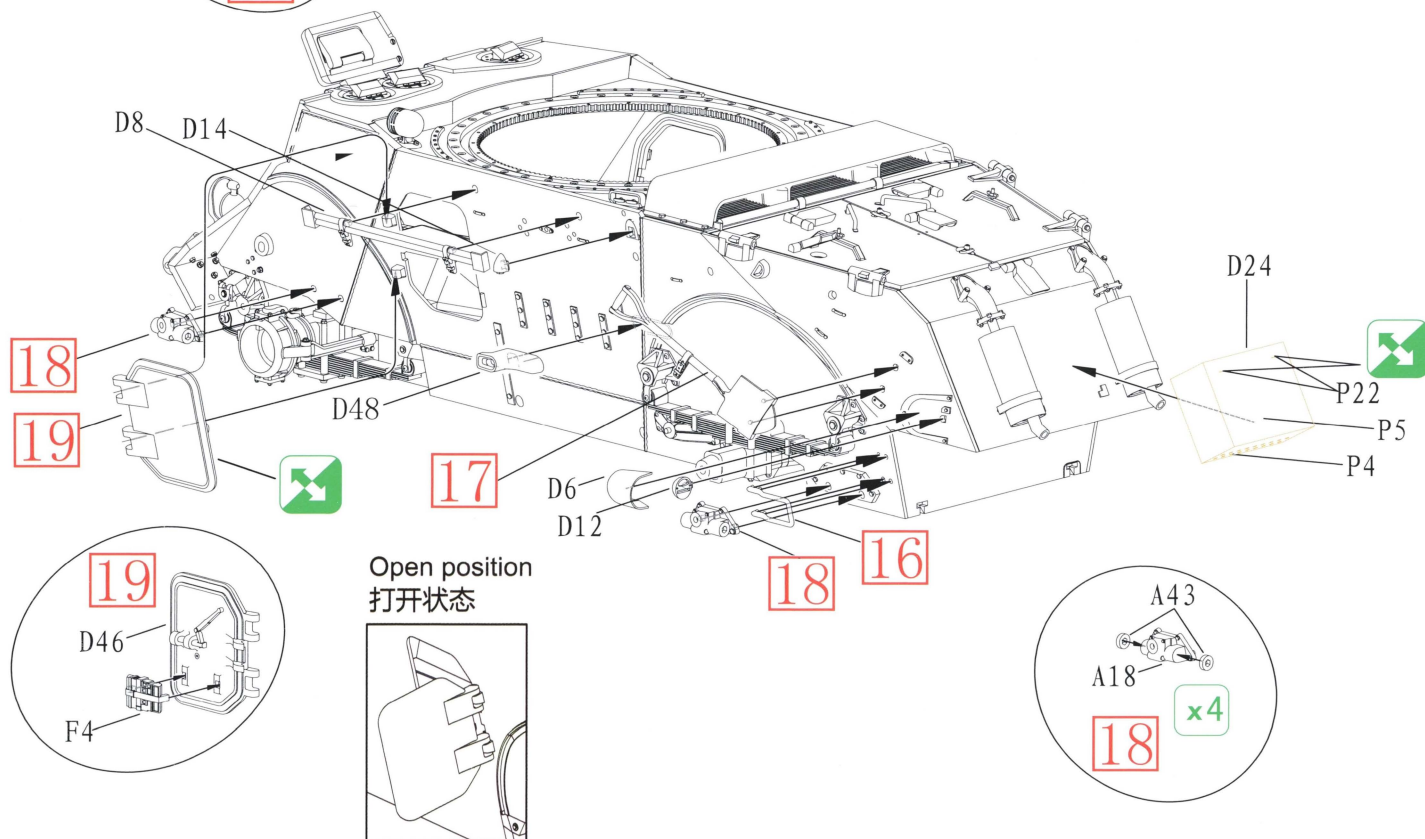
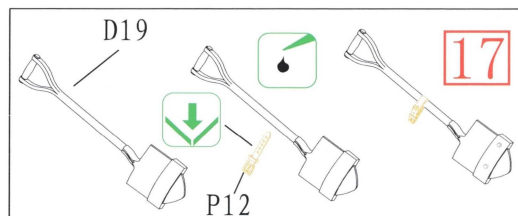
7

8

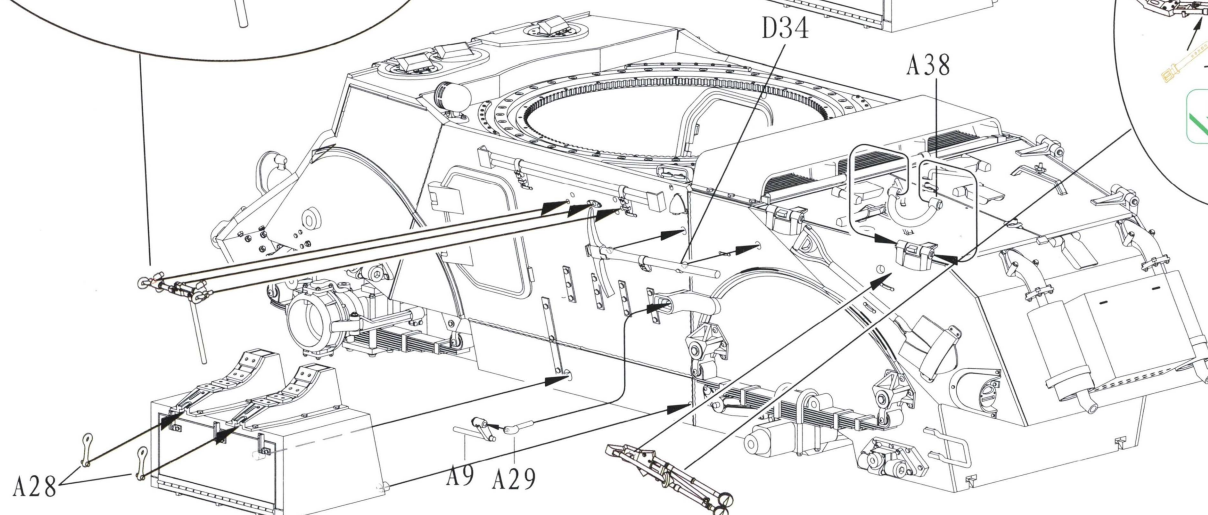
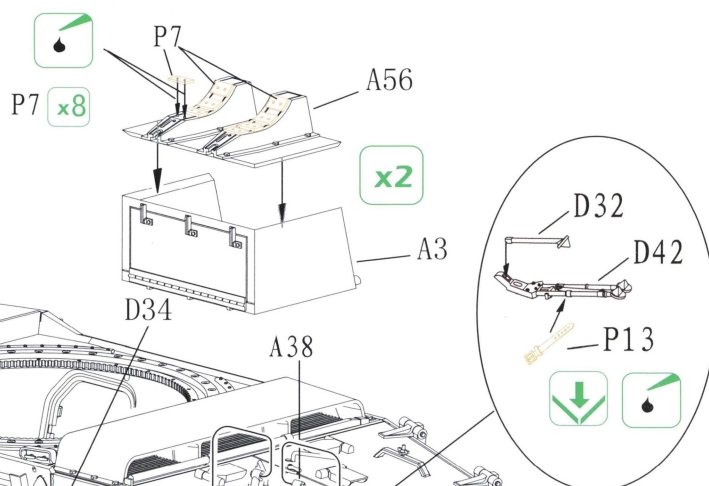
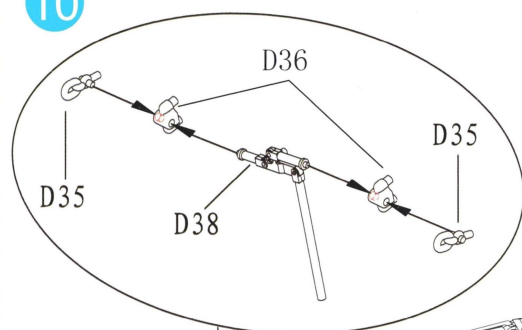
9



Remove the bolt nuts from the surface of the parts  
请将表面上不需要的螺钉移除



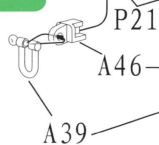
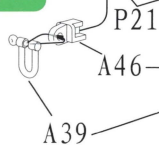
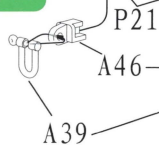
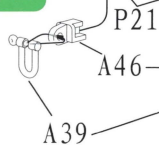
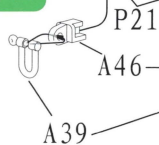
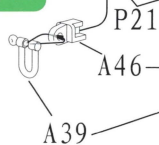
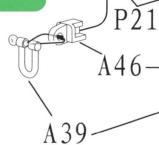
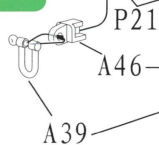
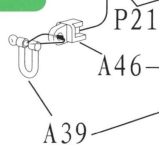
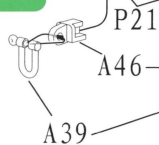
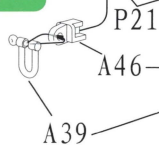
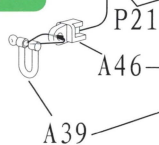
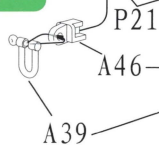
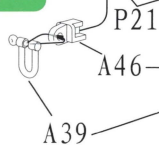
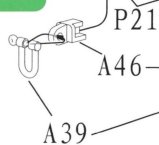
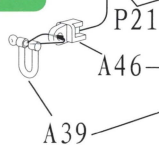
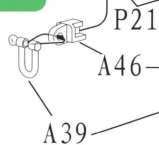
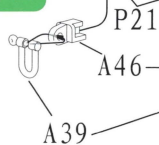
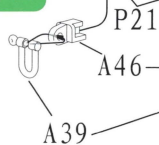
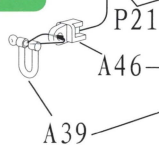
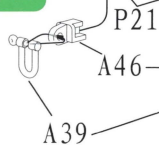
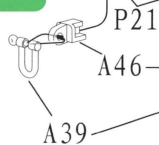
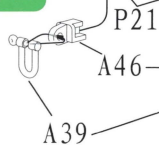
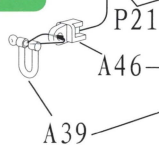
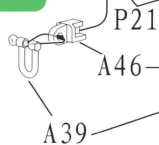
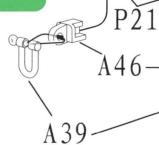
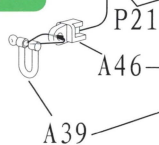
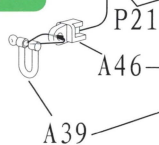
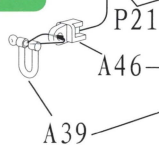
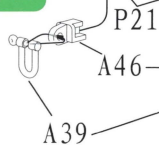
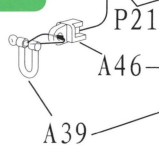
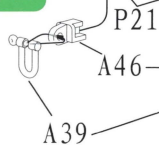
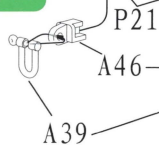
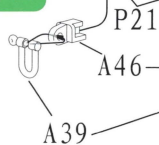
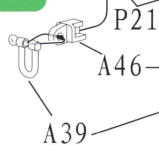
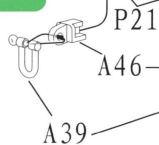
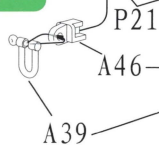
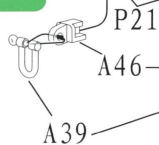
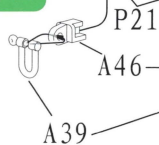
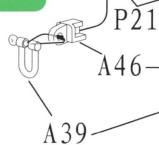
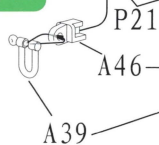
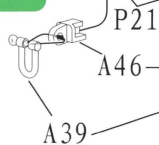
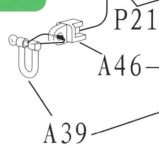
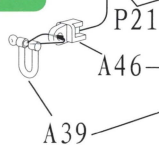
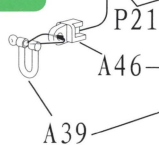
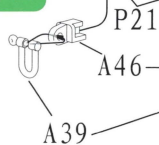
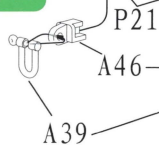
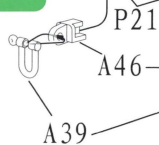
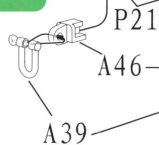
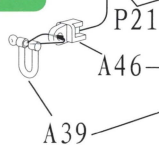
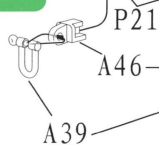
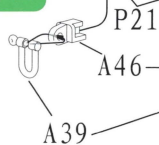
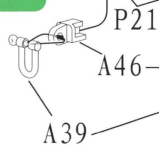
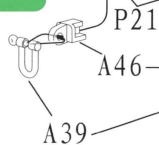
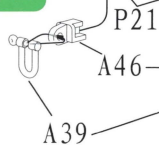
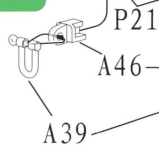
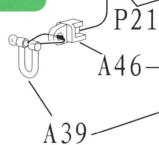
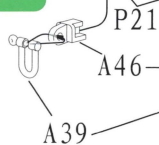
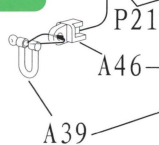
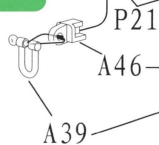
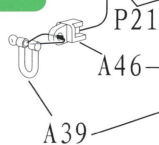
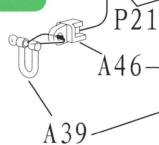
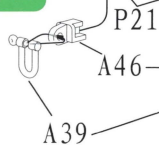
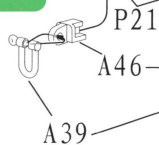
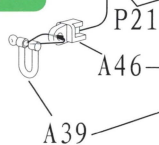
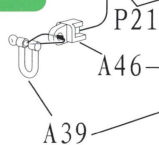
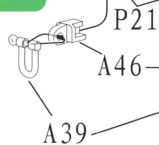
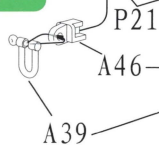
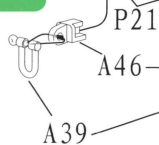
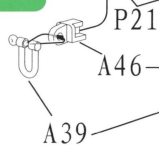
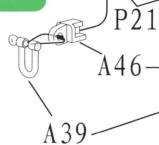
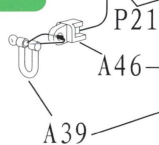
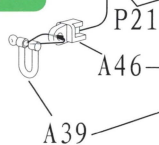
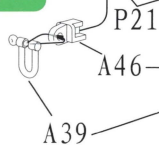
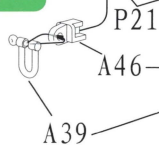
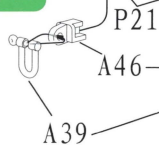
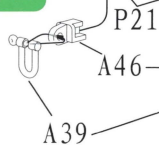
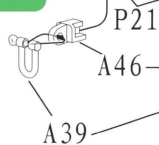
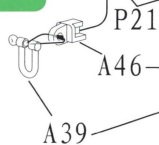
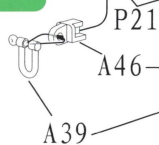
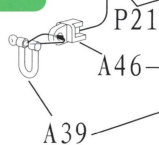
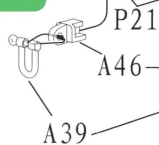
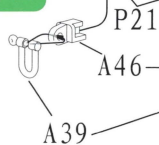
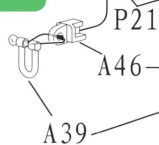
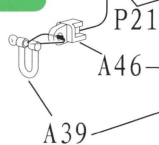
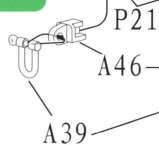
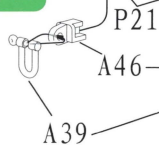
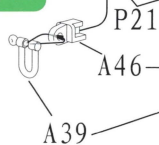
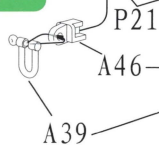
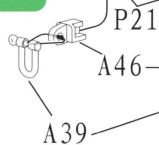
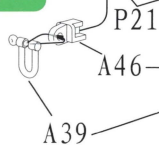
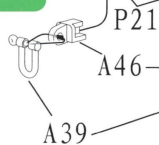
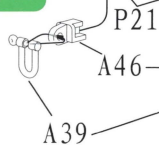
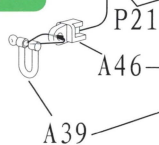
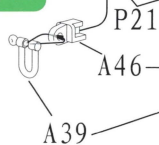
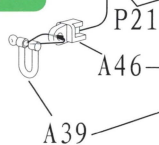
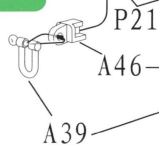
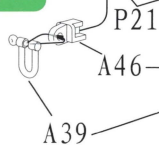
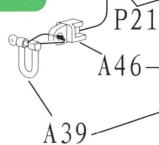
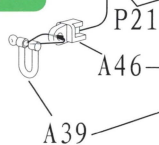
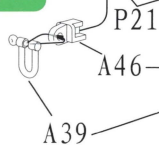
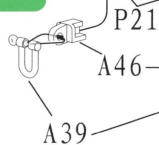
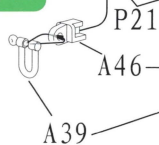
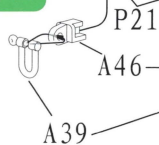
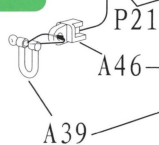
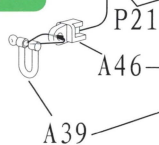
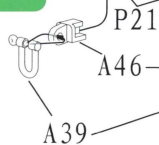
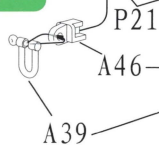
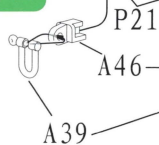
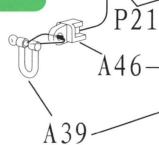
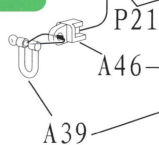
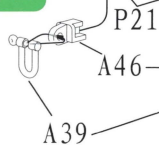
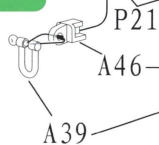
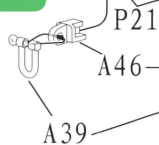
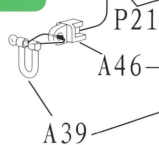
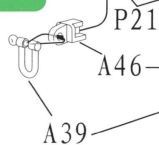
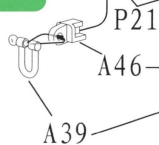
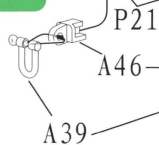
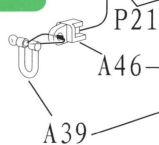
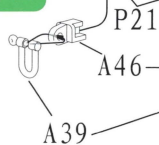
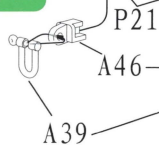
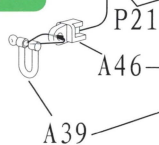
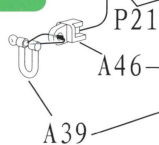
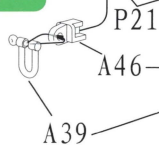
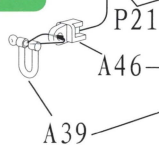
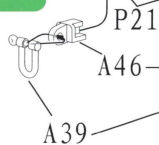
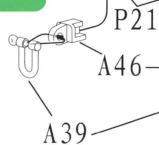
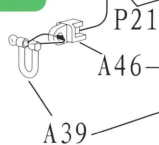
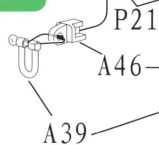
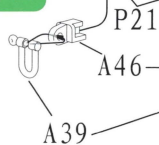
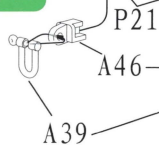
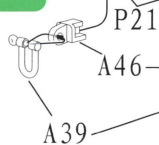
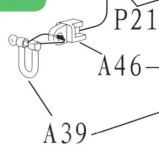
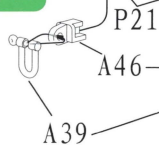
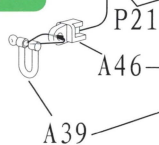
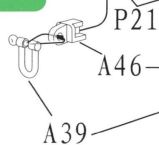
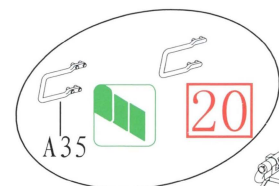
19



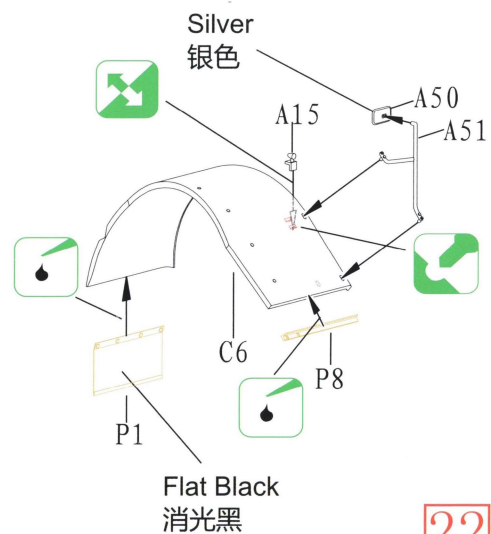
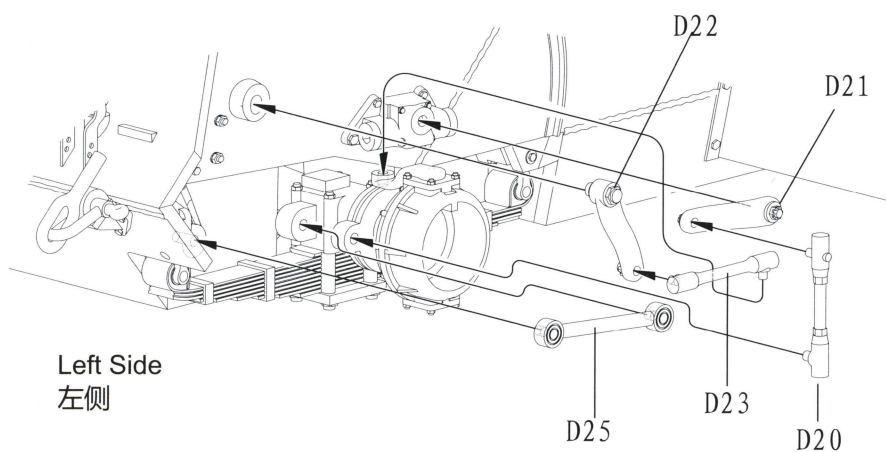
11

Remove the bolt nuts from the surface of the parts

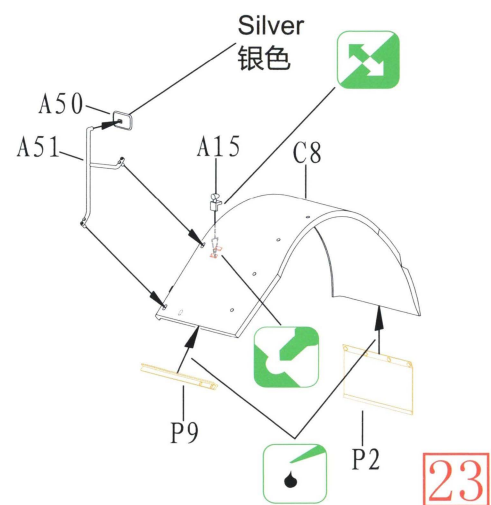
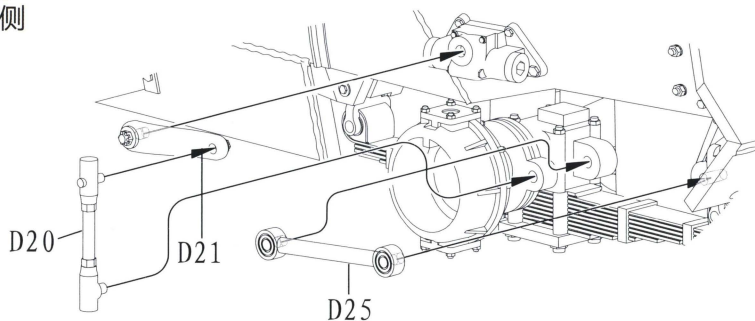
请将表面上不需要的螺钉移除



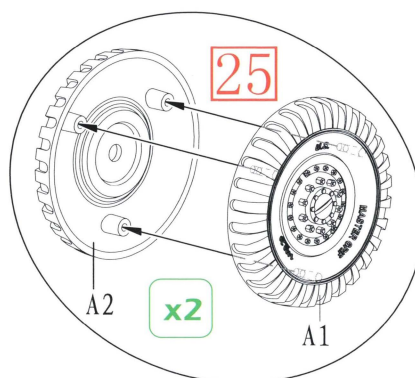
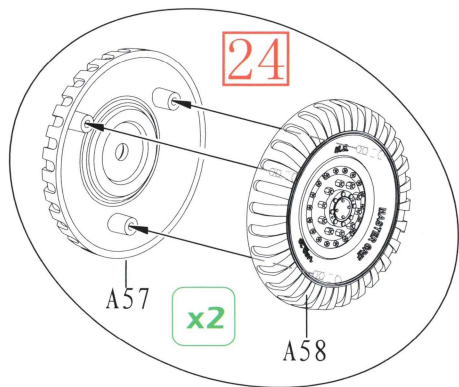
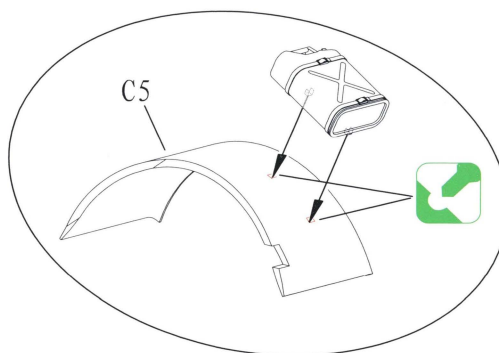
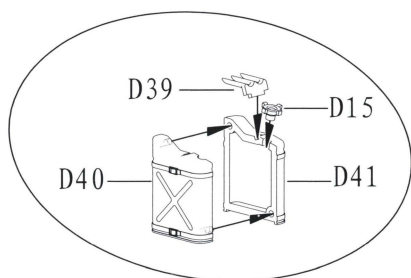
13

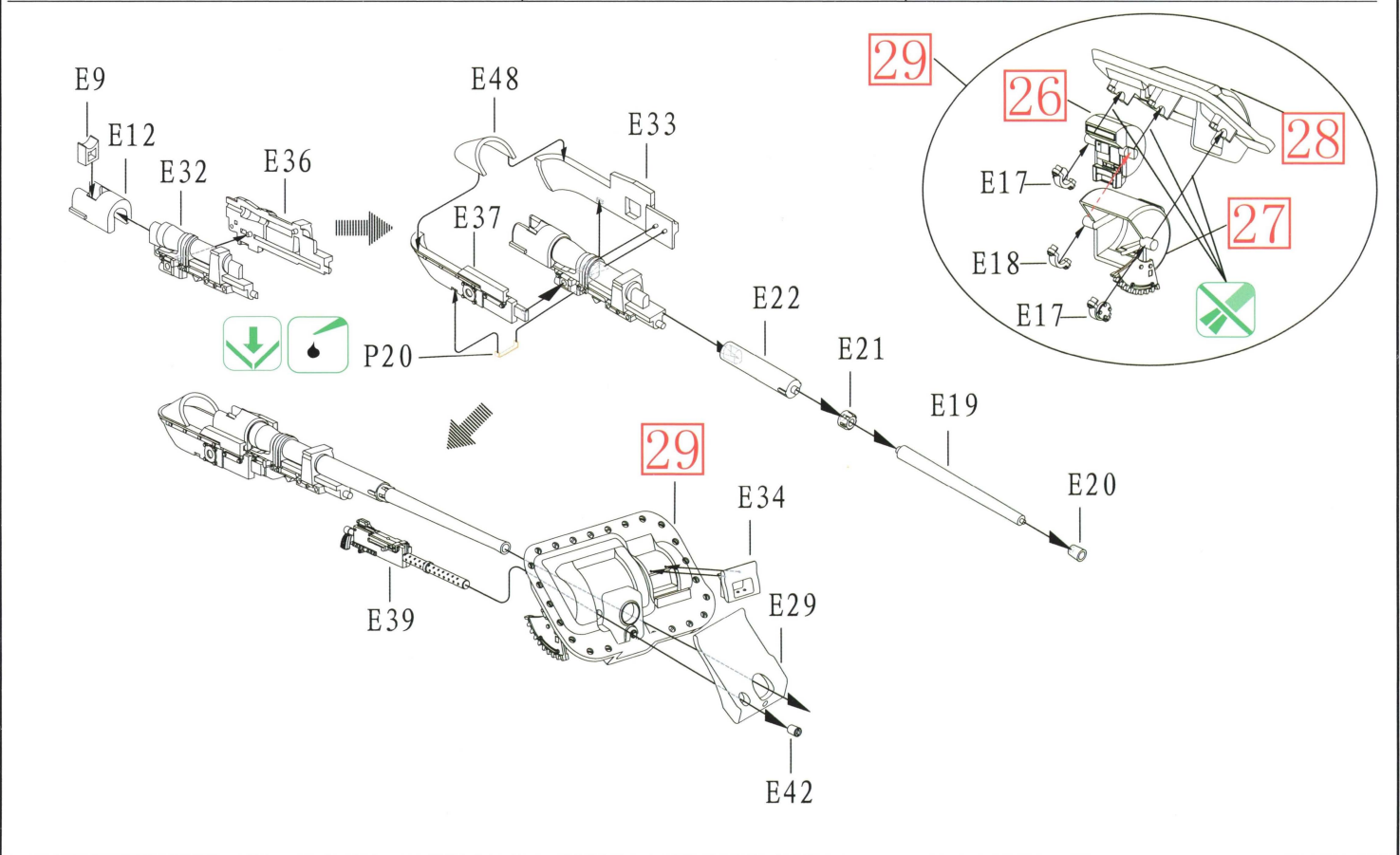
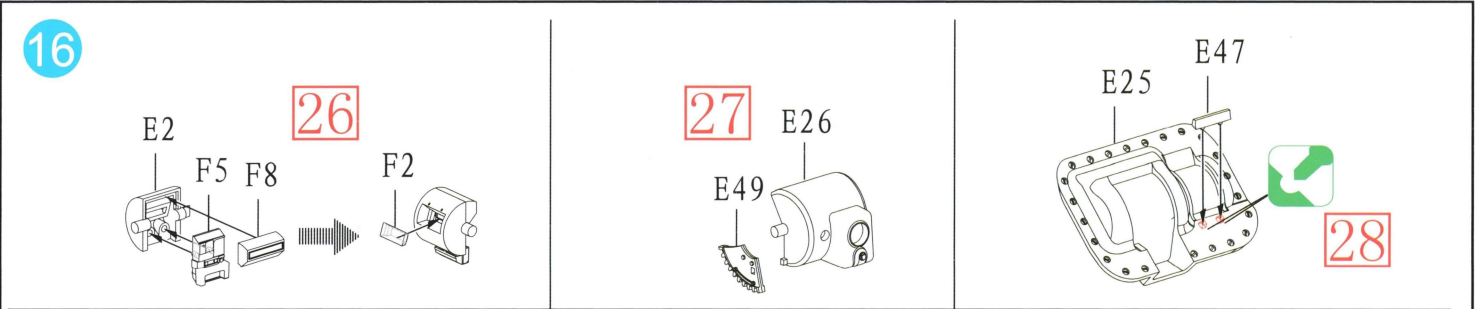
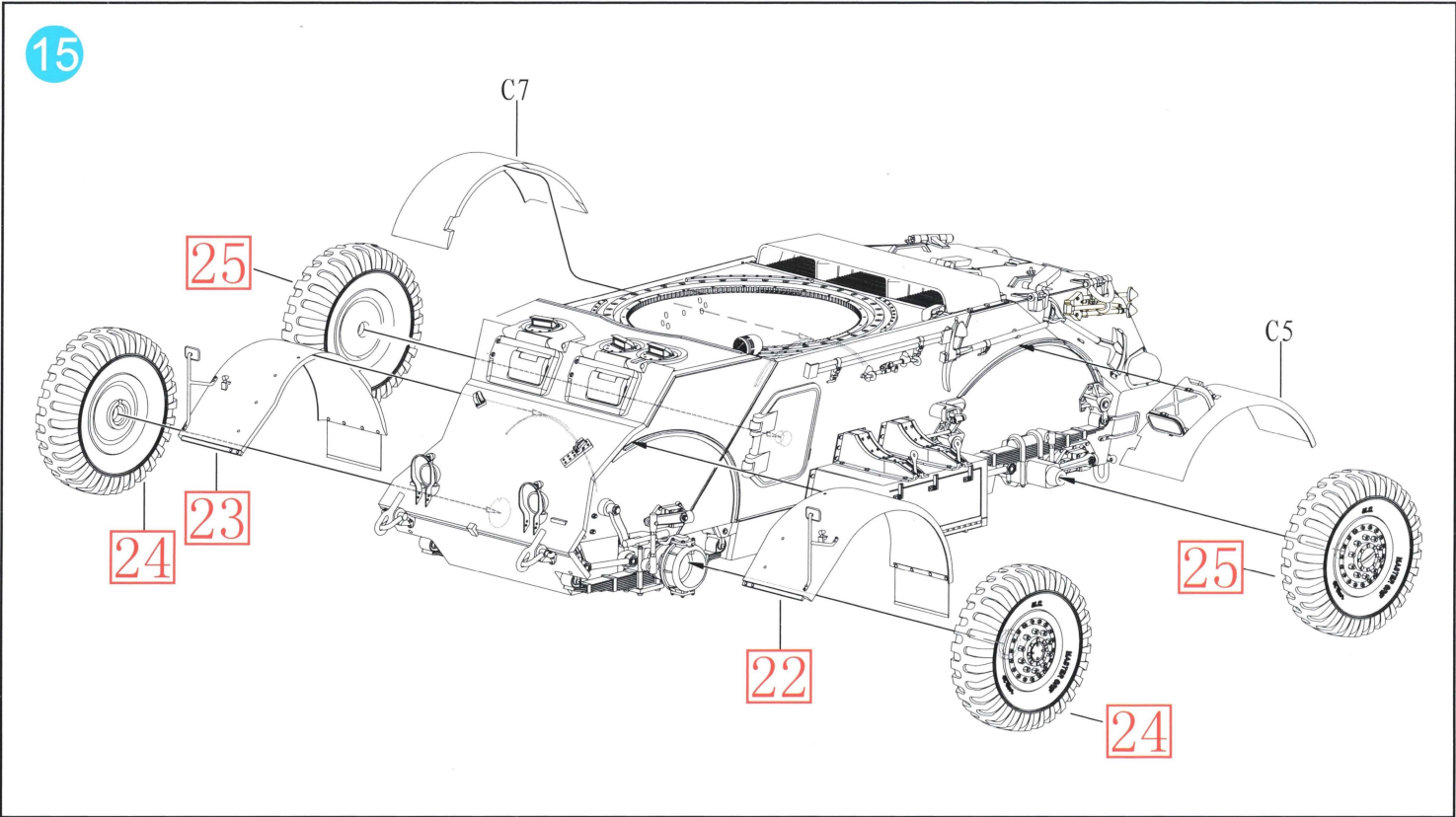


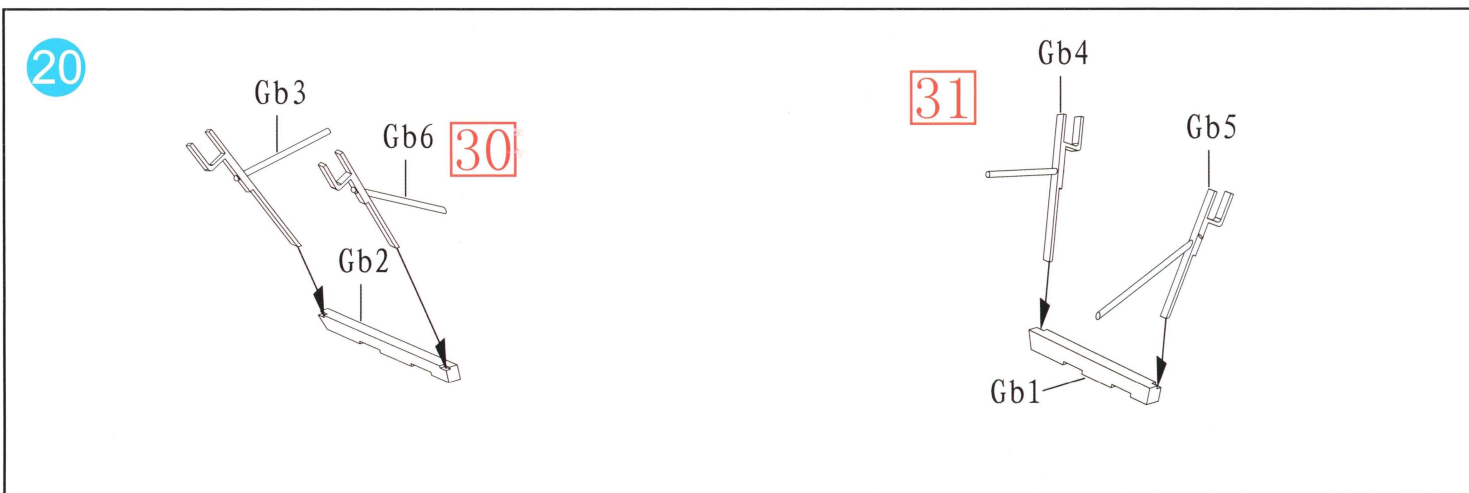
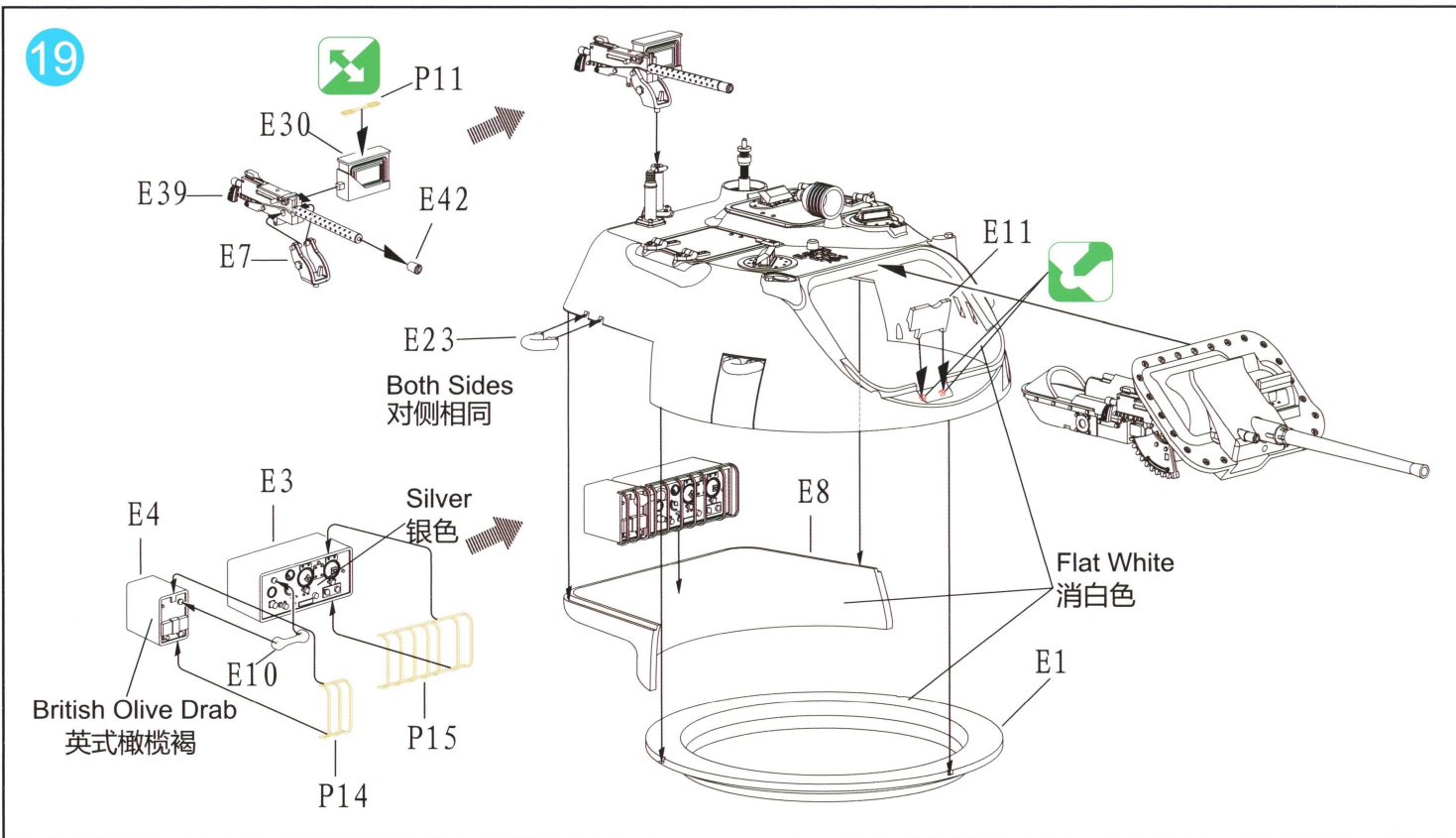
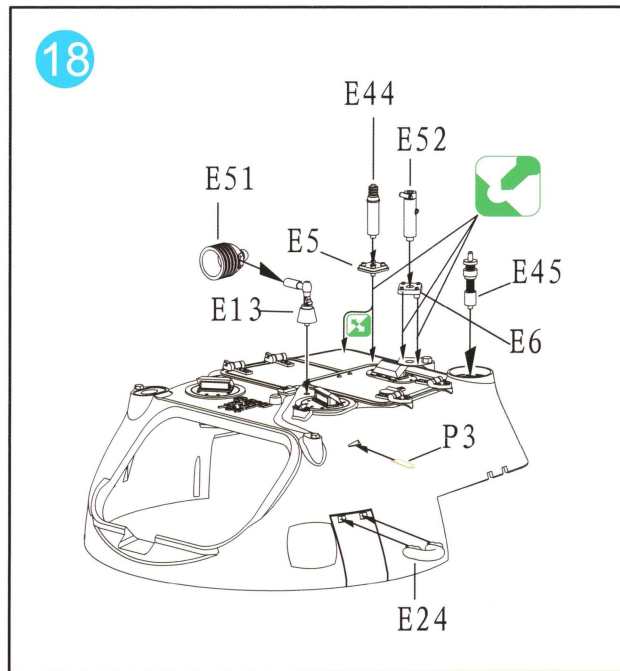
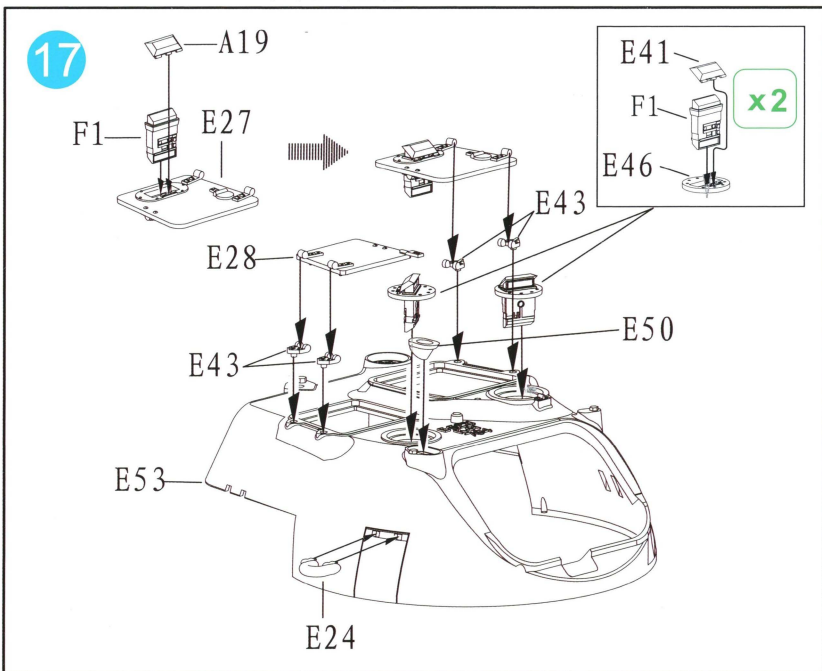
Right Side  
右侧



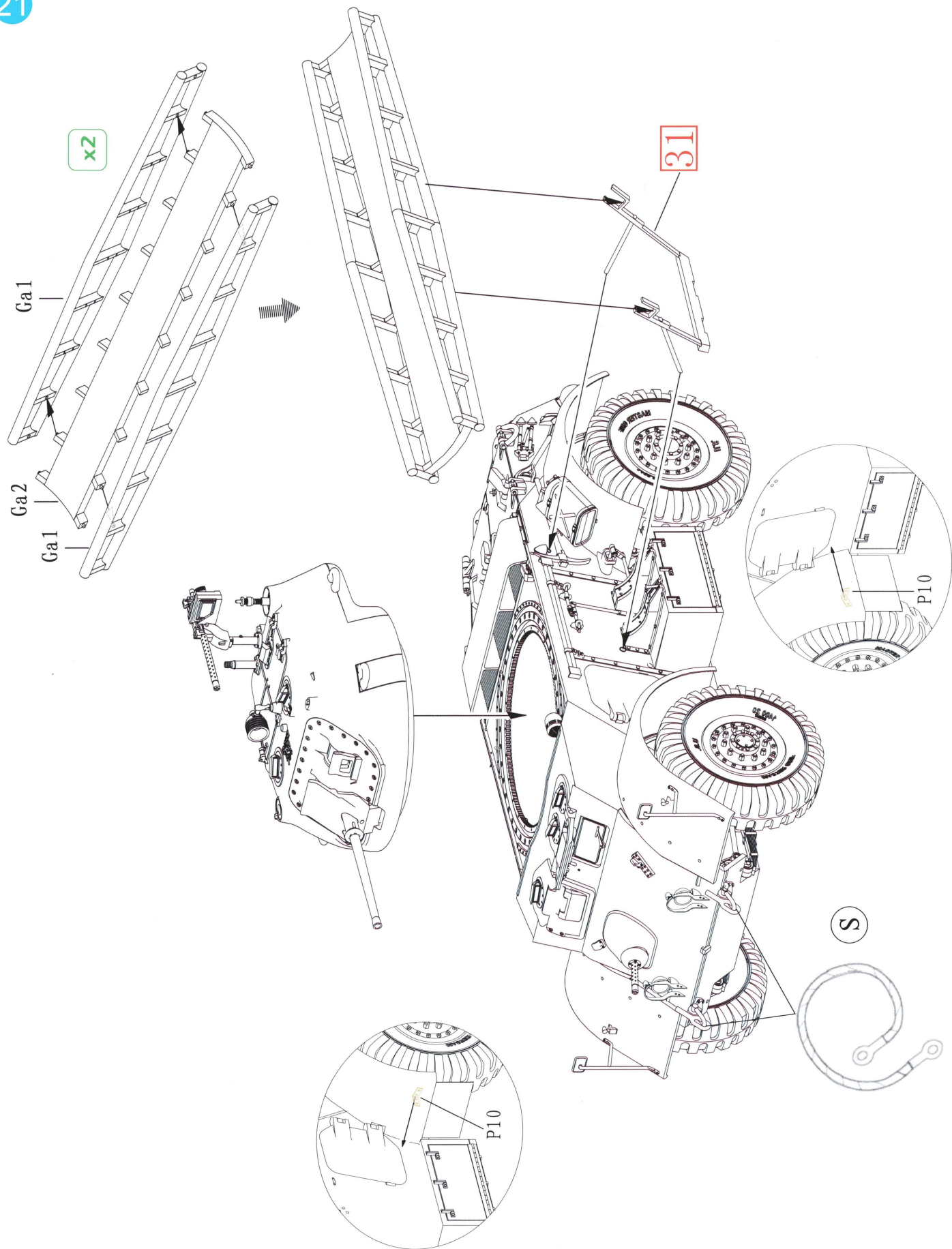
14



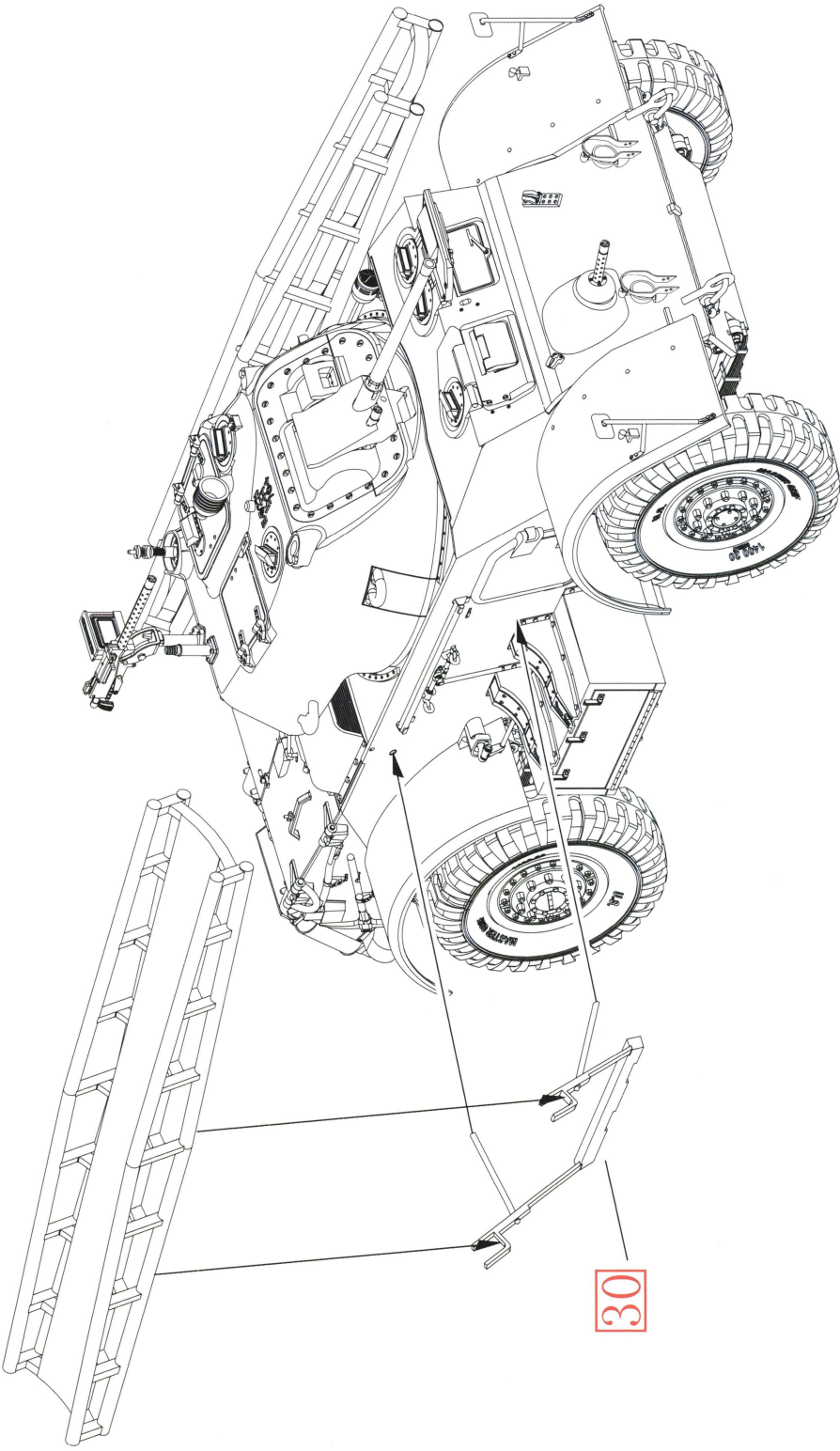




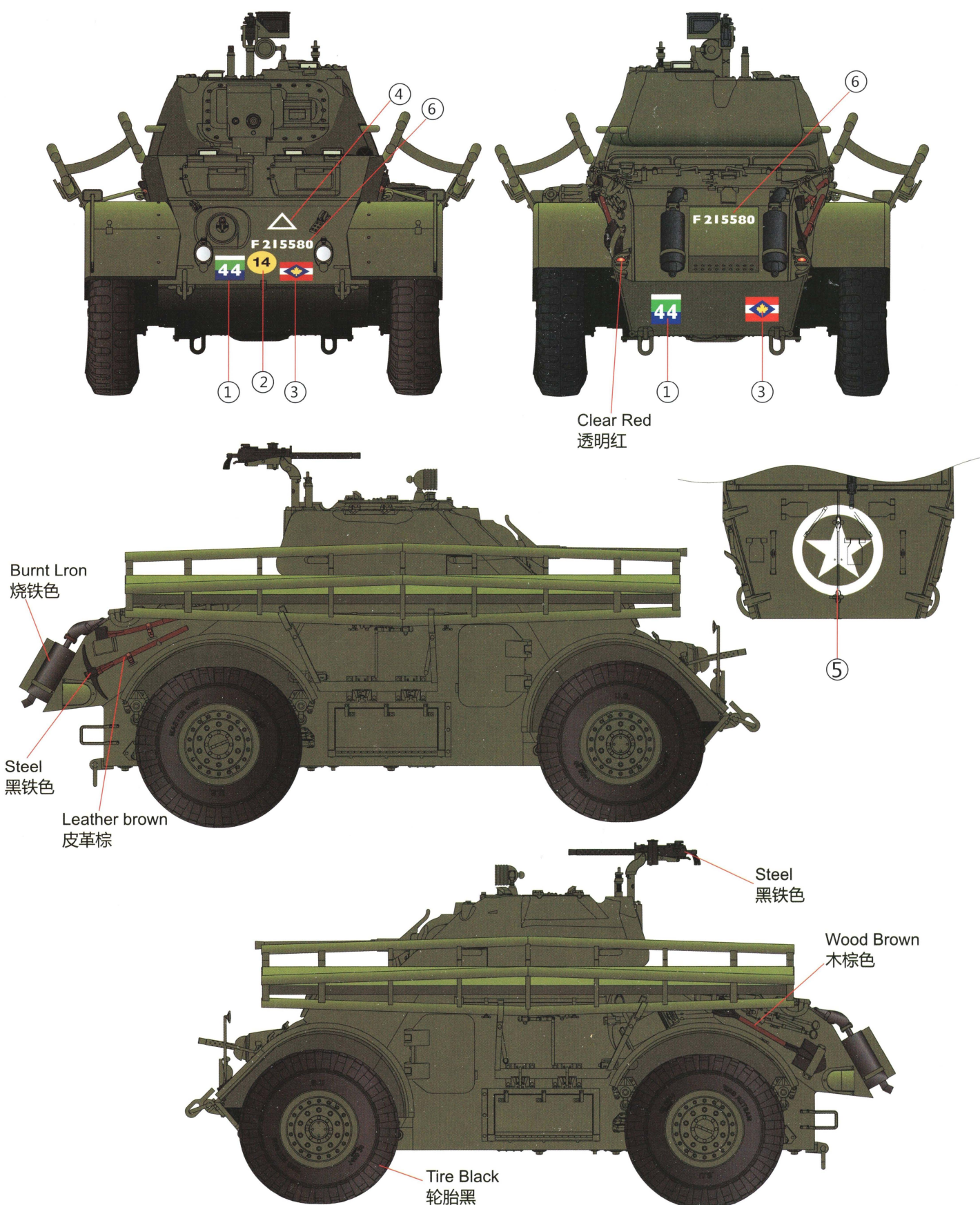
21



22



F215580,D Squadron, Royal Canadian 12th Manitoba Dragoons,Cean, August 1944.  
F215580, 皇家加拿大第12马尼托巴龙骑兵, D中队, 卡昂, 1944年8月。



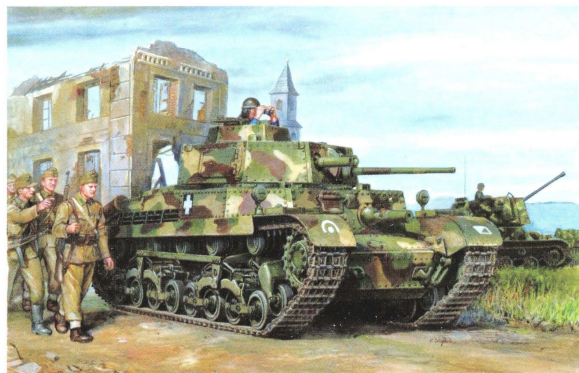
Camouflage Scheme: Overall British Olive Drab No.15  
全车涂英式橄榄褐色No.15



**Humber Armored Car MK.III**

亨伯MK.III型装甲车

CB35112



**Hungarian Medium Tank 40.M 'Turan' I**

匈牙利40.M '图兰' I 中型坦克

CB35120



**Armored Krupp Protze Kfz.69 with 3.7cm Pak 36(late Version)**

德军克虏伯Protze装甲反坦克型 (搭载 Pak 36 37mm火炮)

CB35132



**U.S. 4x4 Mine Resistant Ambush Protected (MRAP) Vehicle 'MAXX'**

美军4x4防地雷反伏击车 'MAXX'

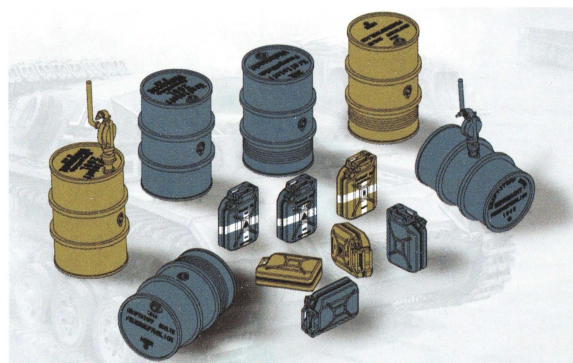
CB35142



**DFS230V-6 Light Assault Glider W/ Deceleration rocket**

DFS-230V6轻型突击滑翔机(装载减速火箭)

GB7009



**WWII German 20L Jerry Can & 200L Fuel Drum Set**

二战德军20升油箱及200升油桶组

GB7020

**威駿模型 Bronco Models**

宁波威駿模具塑胶有限公司

Ningbo Weijun Mould & Plastic co., Ltd.

地址：中国宁波市北仑区灵峰山路688号D幢

Add : D Building, No.688, Ling Feng Shan Road, Beilun, Ningbo, China.

E-mail: bronco@vip.163.com

www.cn-bronco.com

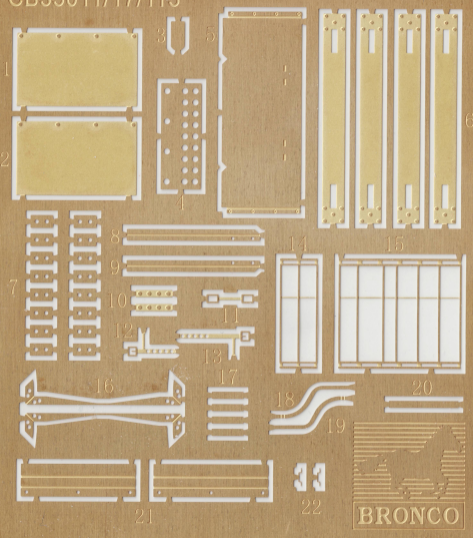


威駿模型公众号



威駿模型官网

CB35011/17/115



① **F6168I F6168I F6168I**

②   ③ **76 76**

④ **F61709** ⑤ **F61709**

⑥  ⑦ 

⑧ **F118775**



**F118775**

⑨ **F118882**

⑩ **71**

**F118882**

**BRONCO MODEL CB 35112**