

Kit Parts

- 1 Prepare parts: Please sand all of the surfaces and delete all details
- 2 Paint all of the parts and cockpit same as mentioned in the kit instructions
- 3 Apply clear coat all of the surfaces that will applied 3D-Decals.
- 4 Cut the sticker with a scissor and separate the 3D-Decal part in warm water.
- 5 Remove any water with an earstick or a tissue.
- 6 You can apply CA glue to invisible spots if needed.

www.babibimodel.com

Babibi TV

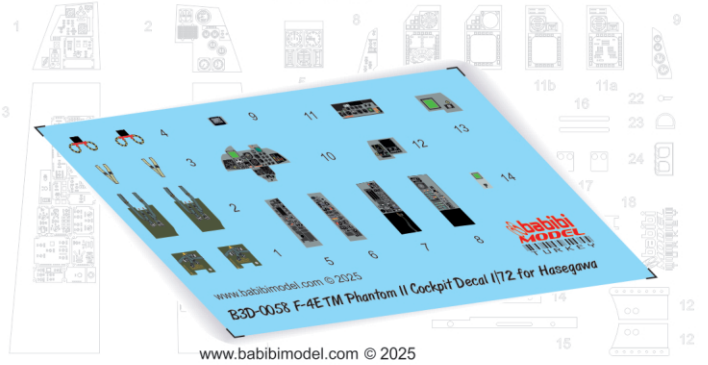
groups/babibimodel

Babibimodel

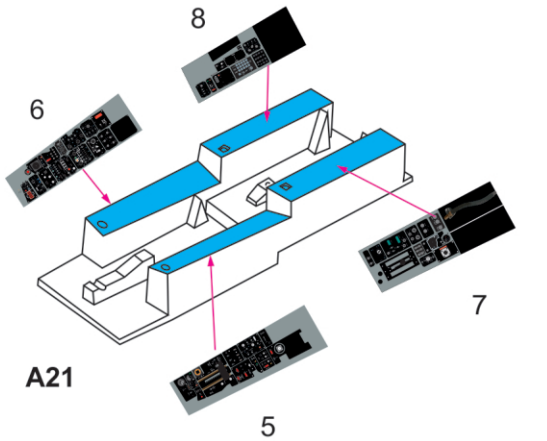
Thank you for purchasing Babibi Model products.

Are you ready for realistic models?

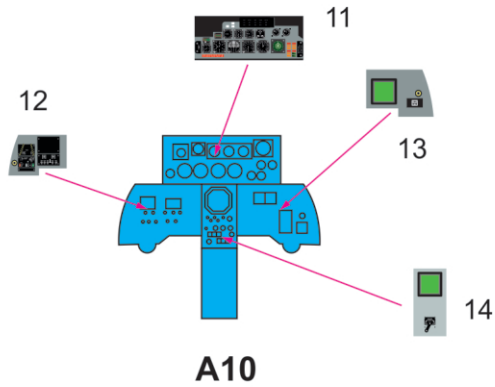
**1/72 Scale F-4E TERMINATOR Phantom II
3D COCKPIT DETAIL SET
B3D-0058**



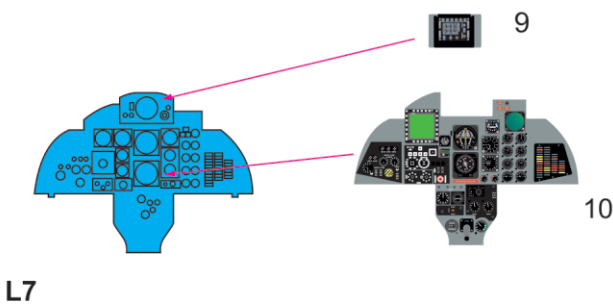
**For Hasegawa
1/72 Kits**



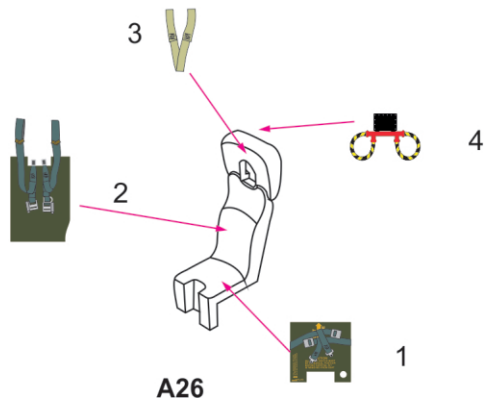
A21



A10



L7



A26