

# CONSOLIDATED B-24D LIBERATOR

**ACADEMY  
MINICRAFT**

**1/72nd Scale**

The **Blonde Bomber II** had an extremely unique history, having been flown by the United States, Italy and Nazi Germany during World War II.

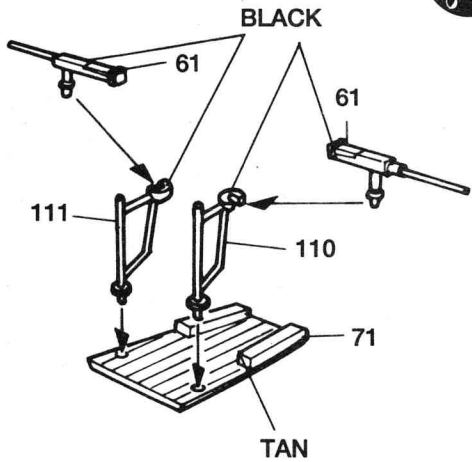
This **Liberator**, a B-24D-1-CO (41-23659) had the misfortune of landing in error at Pachino, Sicily on February 20th, 1943 thereby becoming the first **B-24** to fall into the hands of the Axis. Painted with white bands to conceal its national markings, tail flash and serial number, Captain Giovanni Raina flew the captured plane to Catania-Fontanarossa and subsequently to the Aeronautica Test and Research Center in Guidonia for examination and testing.

The Germans heard about its capture and were extremely anxious to obtain a working sample of the Liberator. Consequently "diplomatic" arrangements were made to transfer the plane in June of 1943 to Germany via Munich-Riem to Rechlin. For this flight the aircraft carried a temporary Italian civil registration (I-Rain) for Captain Rain and his crew.

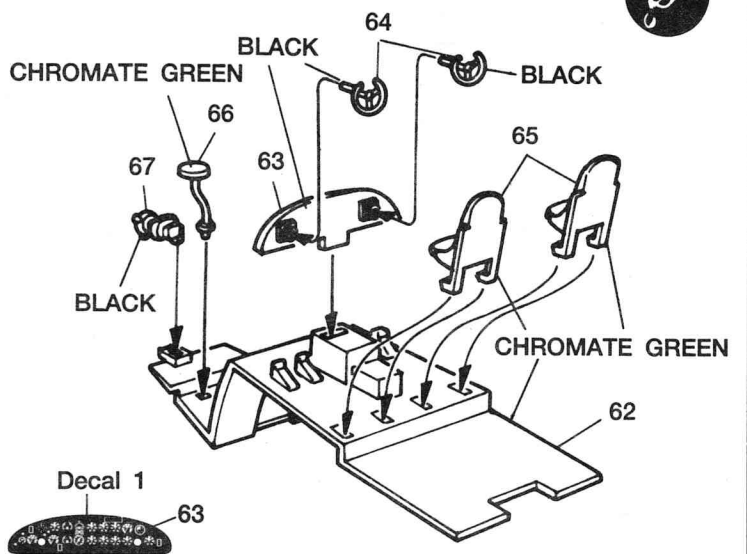
On one of the early test flights in Germany, a rough landing caused collapse of the nose wheel. After repairs were completed in September, the plane was repainted in overall Dark Green and assigned to KG 200 for operational duties. Many times, it was reported in de-briefings that a strange B-17 or B-24 had flown nearby an Allied bombing formation or actually in the group if weather conditions permitted. It is assumed the purpose of these flights was to track the bomber group and radio warnings to the Luftwaffe.



# 1 GUN ASSEMBLY

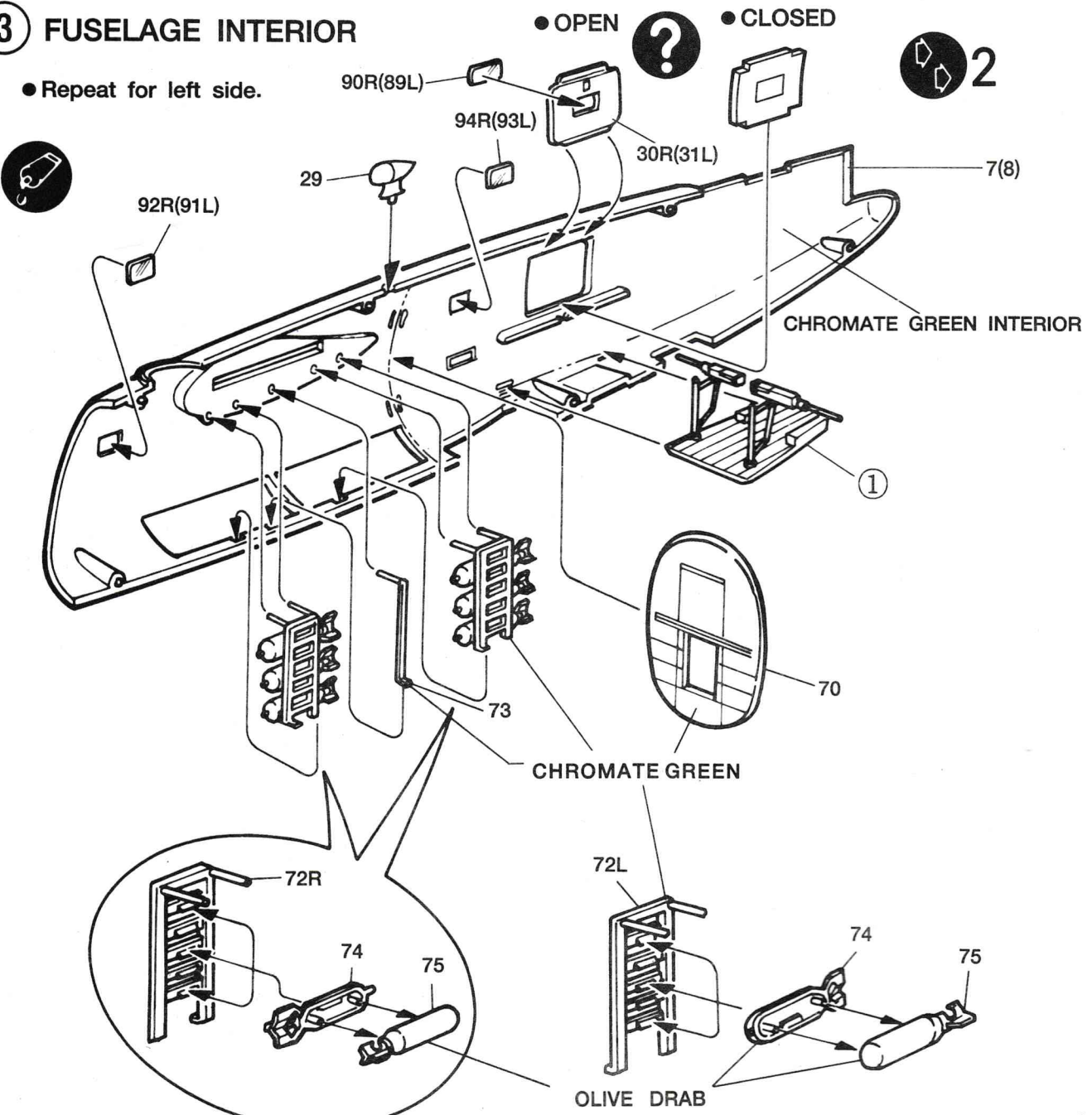


# 2 COCKPIT

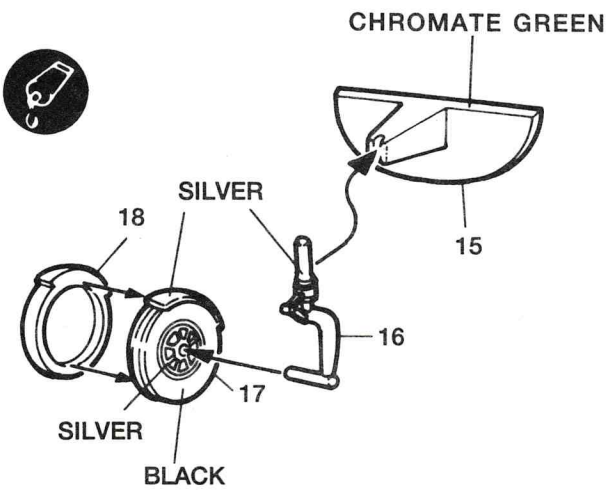


# 3 FUSELAGE INTERIOR

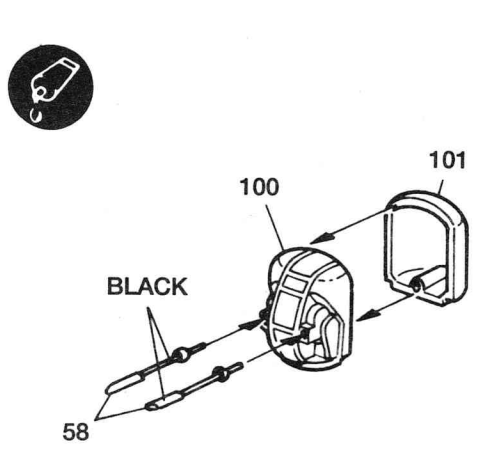
● Repeat for left side.



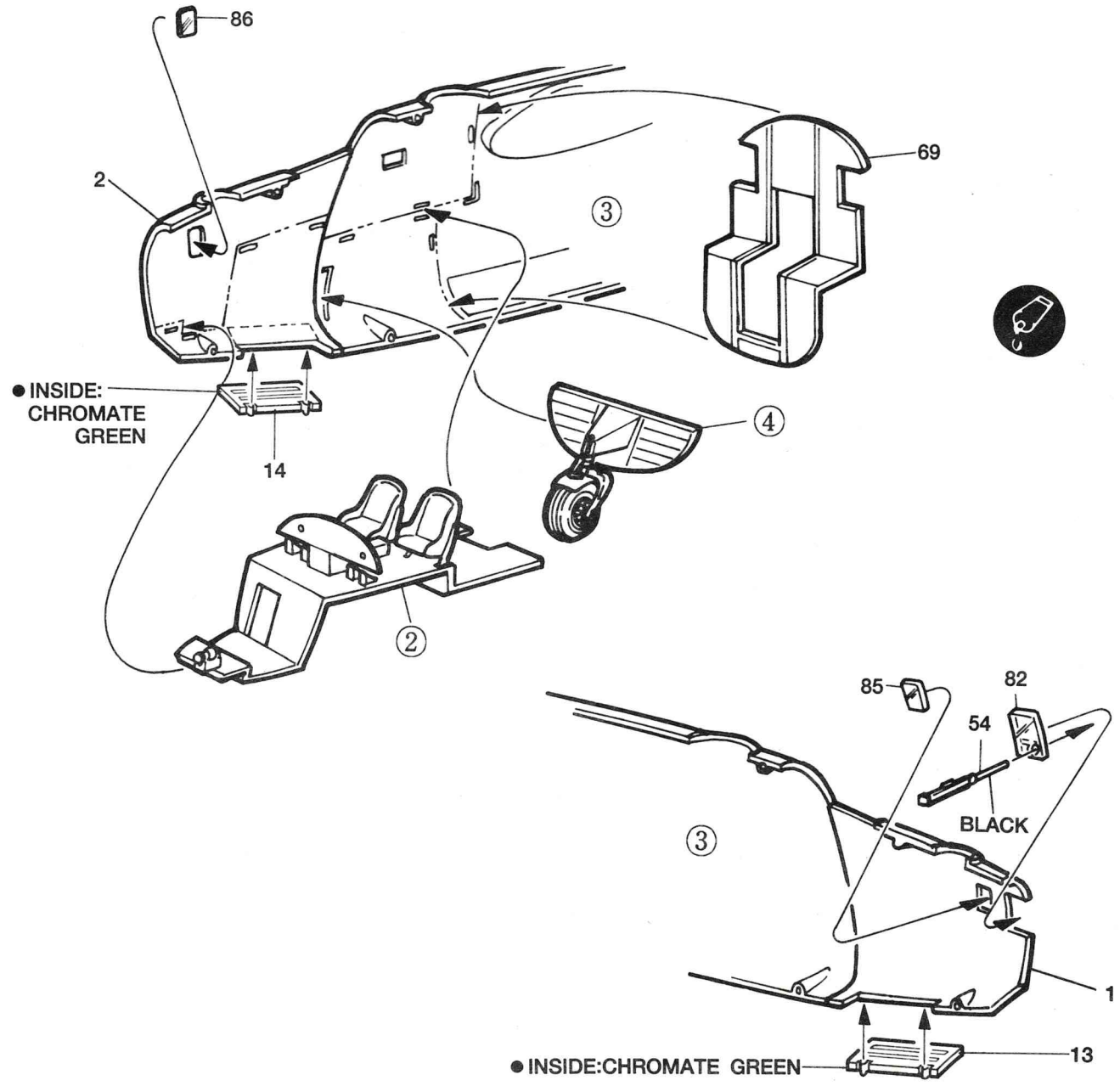
### 4 NOSE WHEEL



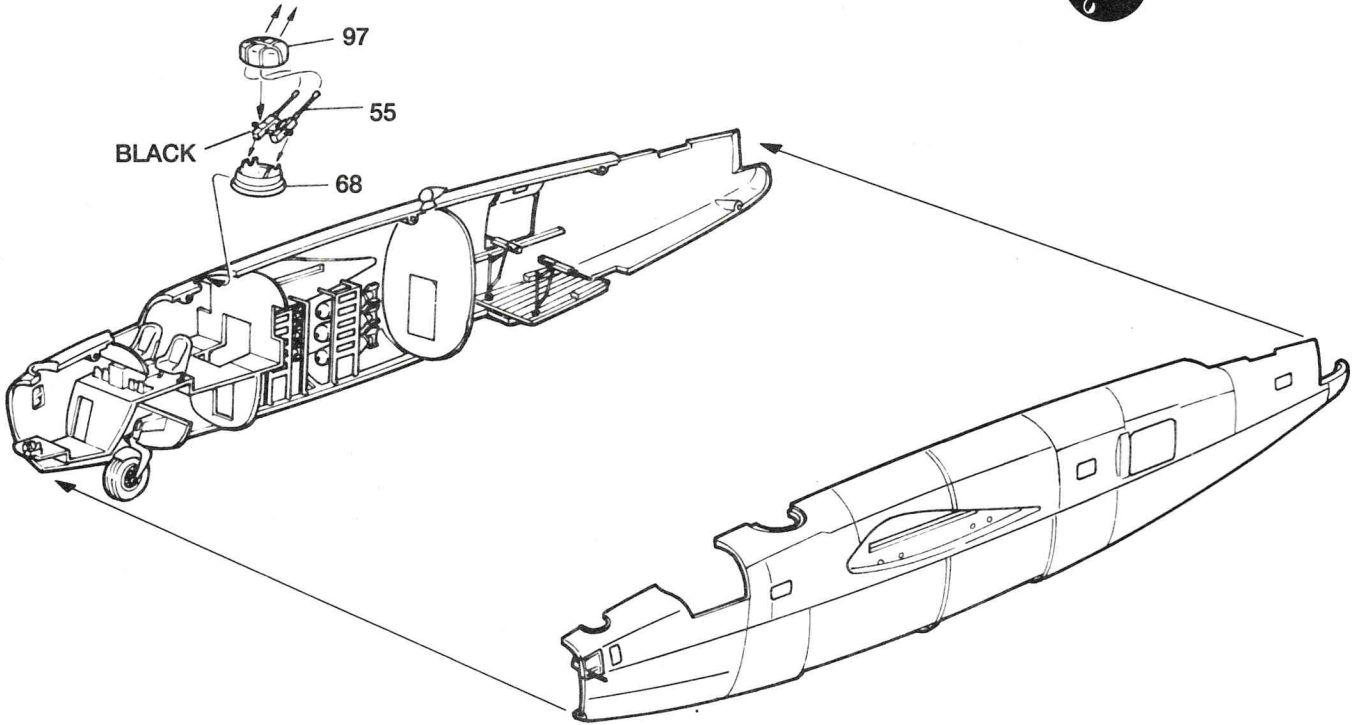
### 5 TAIL TURRET



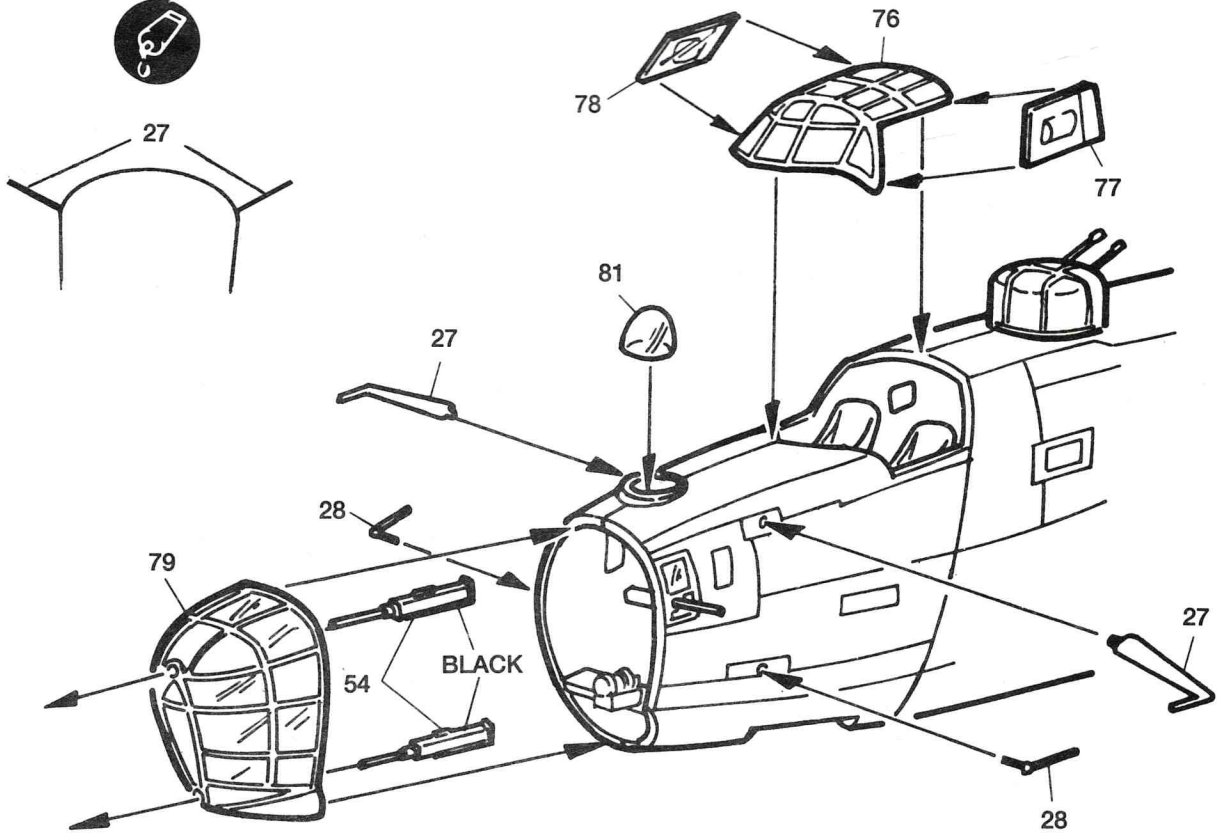
### 6 COCKPIT INSTALLATION



# 7 MAIN FUSELAGE ASSEMBLY

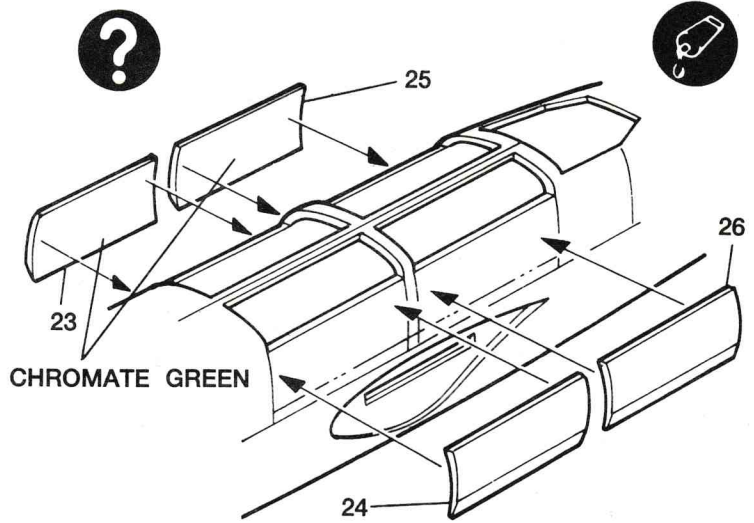
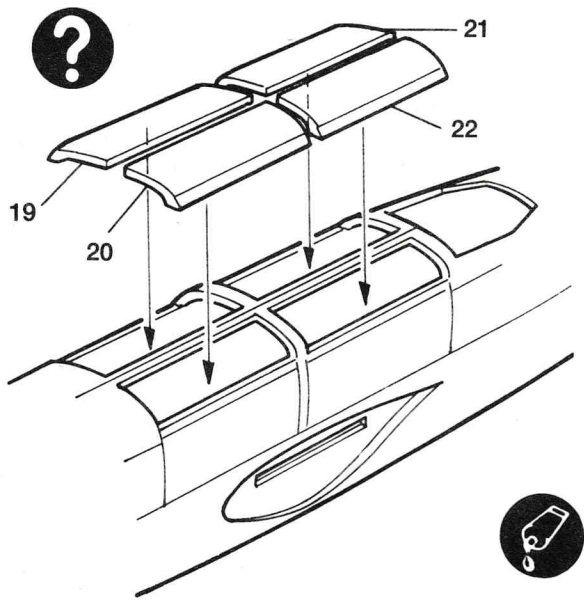


# 8 FORWARD FUSELAGE ASSEMBLY

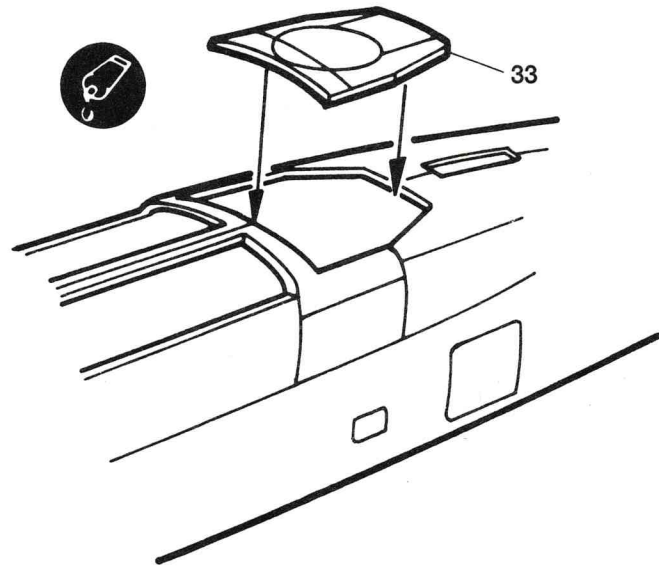




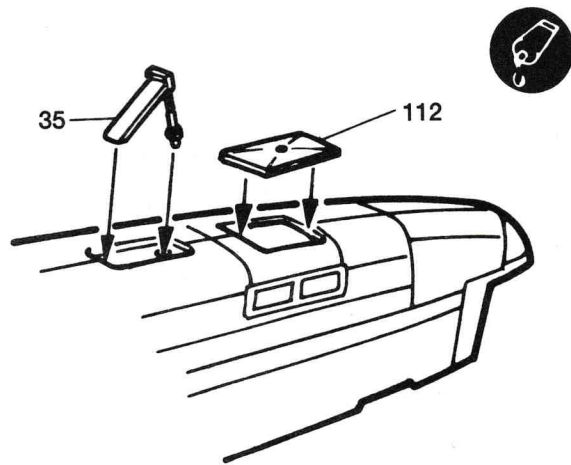
9 BOMB BAY DOORS(CLOSED) 10 BOMB BAY DOORS(OPEN)



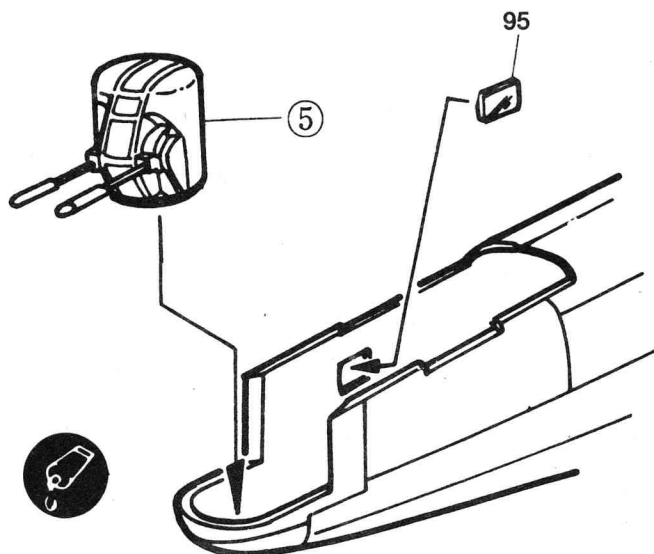
11 LOWER PANEL



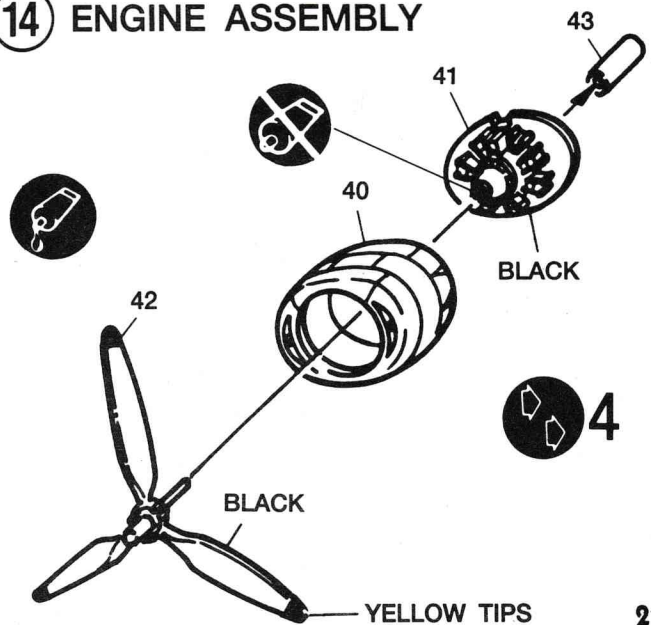
12 LOWER REAR FUSELAGE



13 REAR TURRET INSTALLATION



14 ENGINE ASSEMBLY

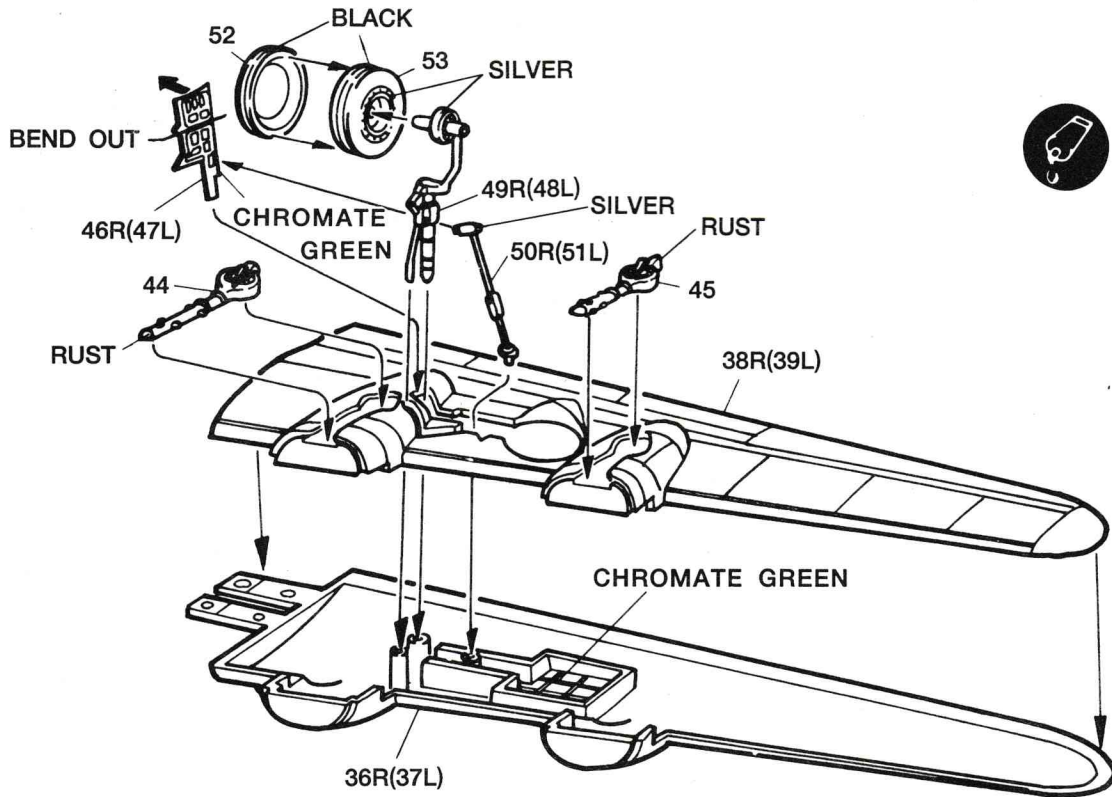


# 15 WING ASSEMBLY

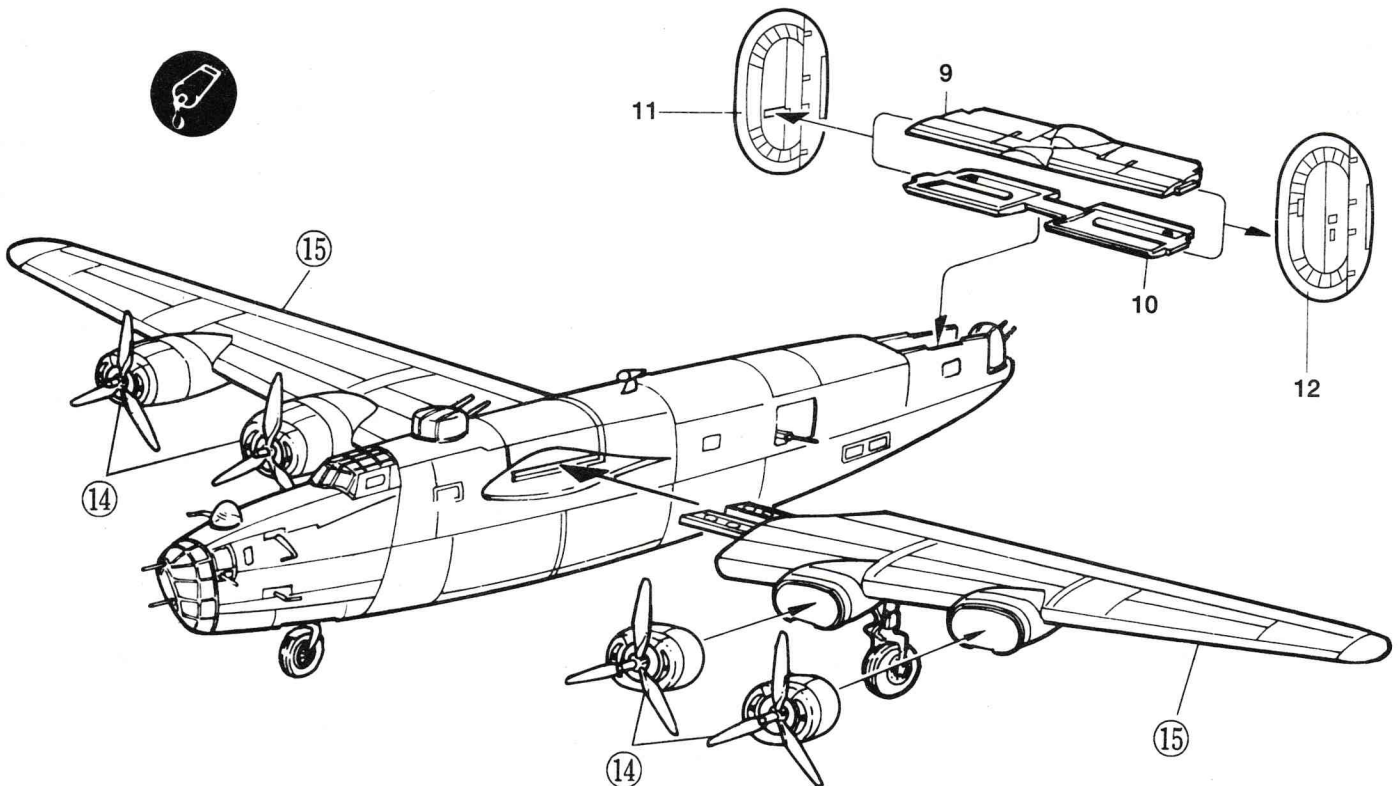


2

• Repeat for left side.



# 16 TAIL AND FINAL ASSEMBLY

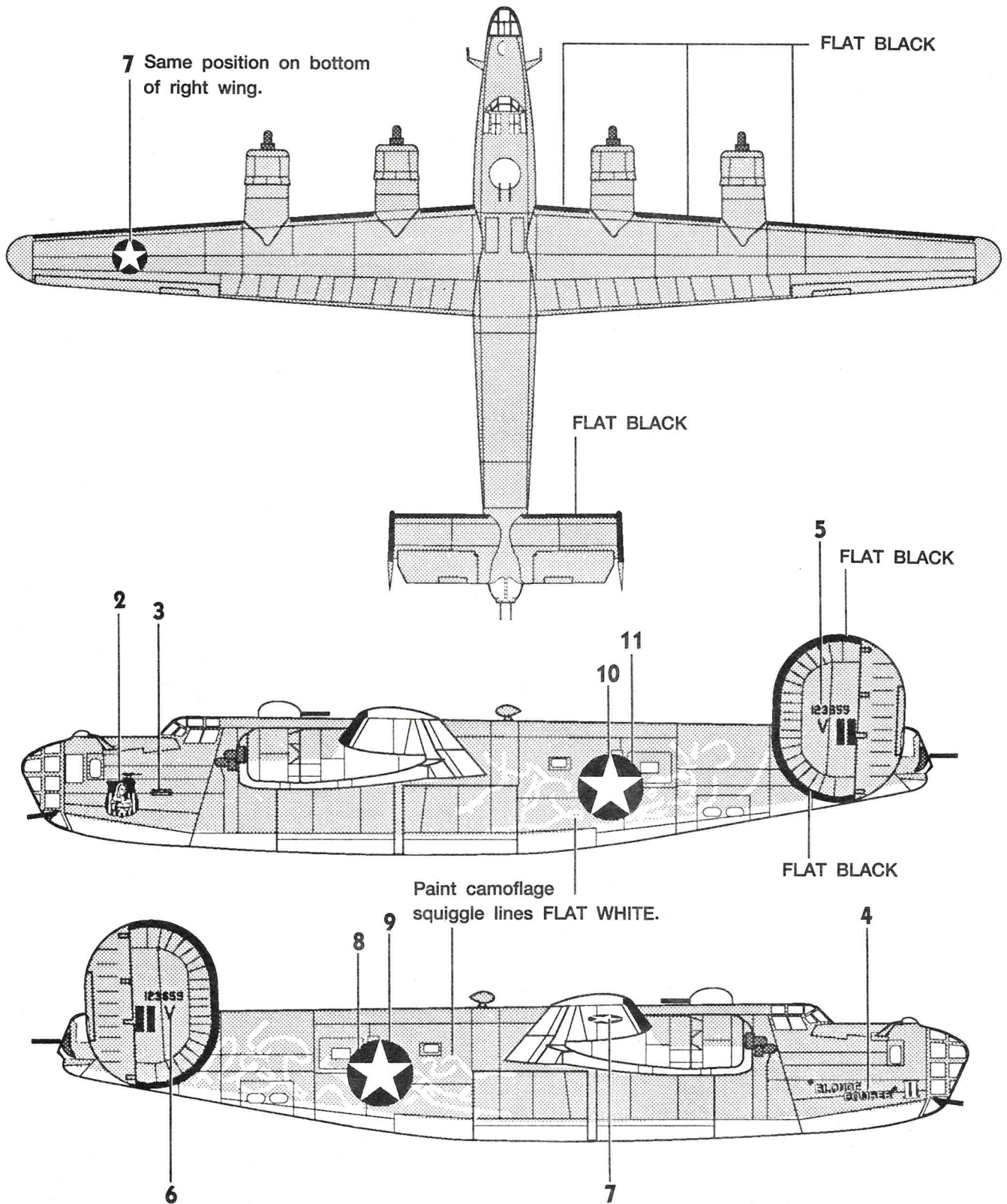




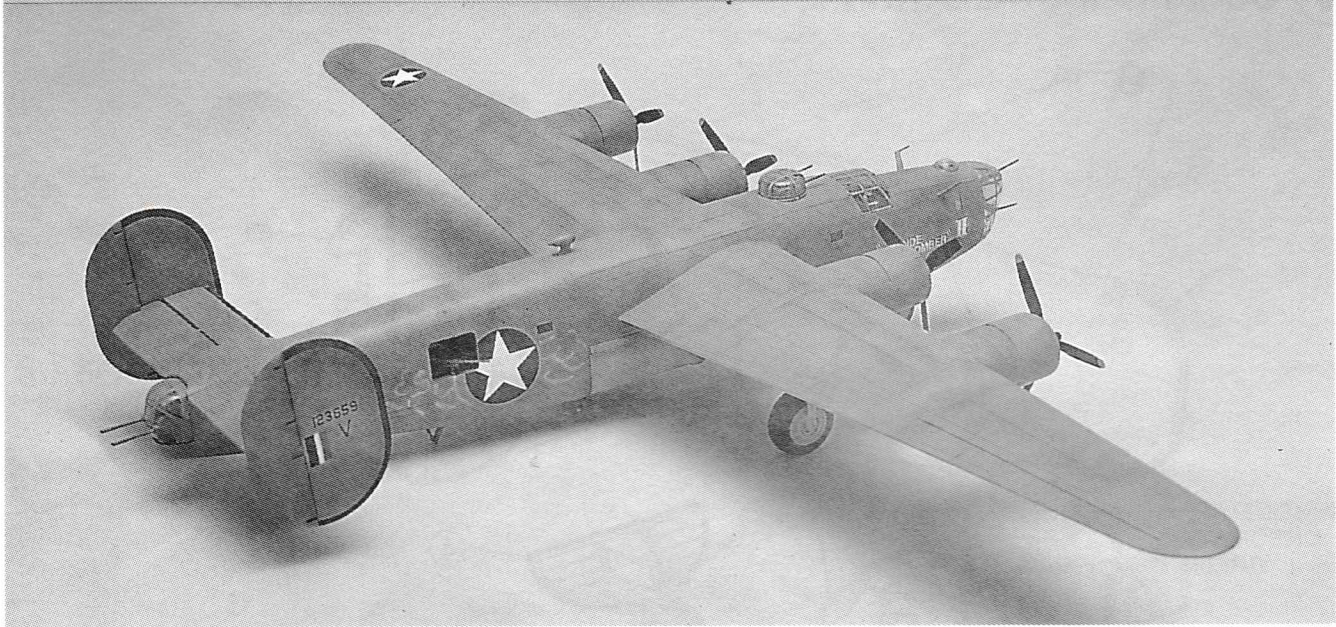
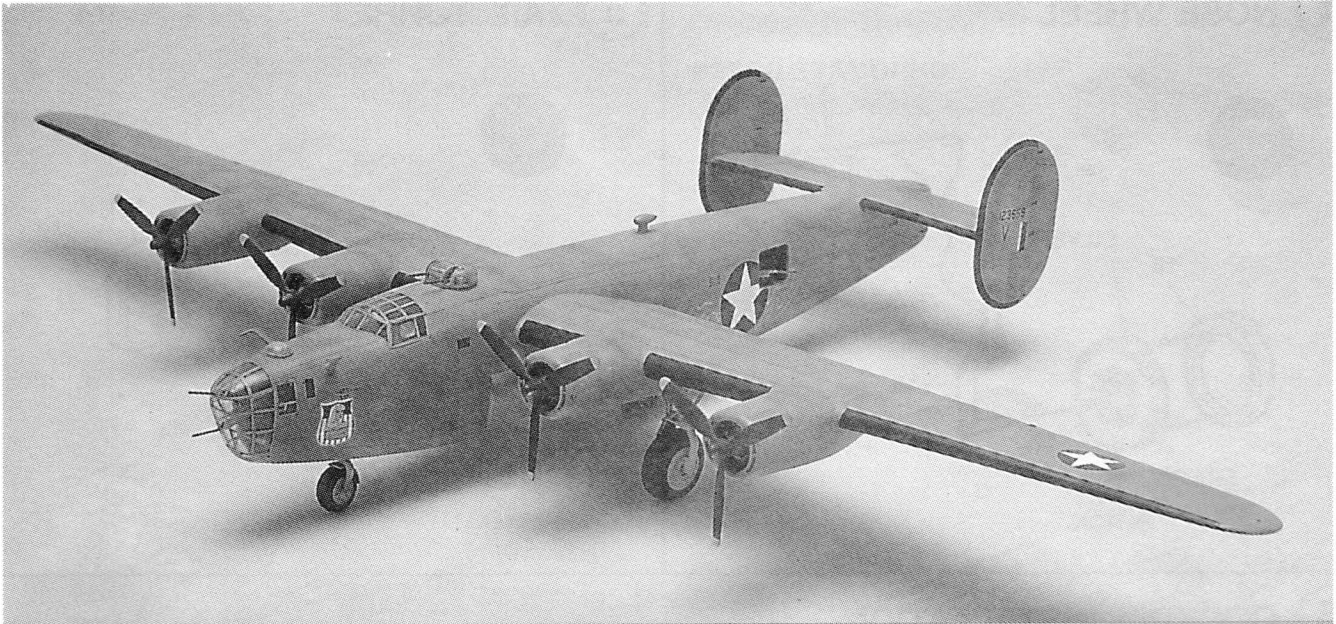
# Painting and Decal Placement Diagram

Paint upper and side surfaces: DESERT SAND FS 30279 

Paint lower surfaces: LIGHT GRAY FS 36173 







**ACADEMY  
MINICRAFT**

**MINICRAFT MODELS, INC.  
P.O. BOX 3577 • TORRANCE, CA 90510**

ENGLISH	FRENCH	GERMAN	SPANISH	ITALIAN
WHITE	BLANCO	WEISS	BLANC	BIANCO
YELLOW	JAUNE	GELB	AMARILLO	GIALLO
RED	ROUGE	ROT	ROJO	ROSSO
BLUE	BLEU	BLAU	AZUL	BLU
GRAY	GRIS	GRAU	GRIS	GRIGIO
GUNMETAL	METALLIC	METALLIC	METALICO	METALLICO
GREEN	VERT	GRUN	VERDE	VERDE
SILVER	ARGENT	SILBERN	PLATA	ARGENTO
BLACK	NOIR	SCHWARZ	NEGRO	NERO
ORANGE	ORANGE	ORANGE	NARANJADO	ARANCIO
AMBER	AMBRE	BERNSTEINFARBEN	AMBAR	AMBRA
ALUMINUM	ALUMINUM	ALUMINUMFARBEN	ALUMINIO	ALLUMINIO
GLOSS	LUSTRE	GLANZENDES	BRILLANTE	BRILLANTE
FLAT	TERNE	GLANZLOSES	APAGADO	OPACO



Cement Parts  
Coller  
Kleben  
Pegar  
Incollare  
Cola  
Kleven



DO NOT cement  
Ne pas coller  
Nicht kleben  
No pegar  
Non incollare  
Nao colar  
Niet kleven



Cut away  
Couper  
Scheiden  
Cortar  
Tagliare  
Cortar  
Snijden



Optional parts  
Choix  
Auswahlmöglichkeit  
Eleccion  
Scelta  
Opcao  
Keuze



**3**

Repeat operation  
Répéter l'opération  
Vorgang wiederholen  
Repitir la operacion  
Ripetere  
Repitir a operacão  
Herhalen