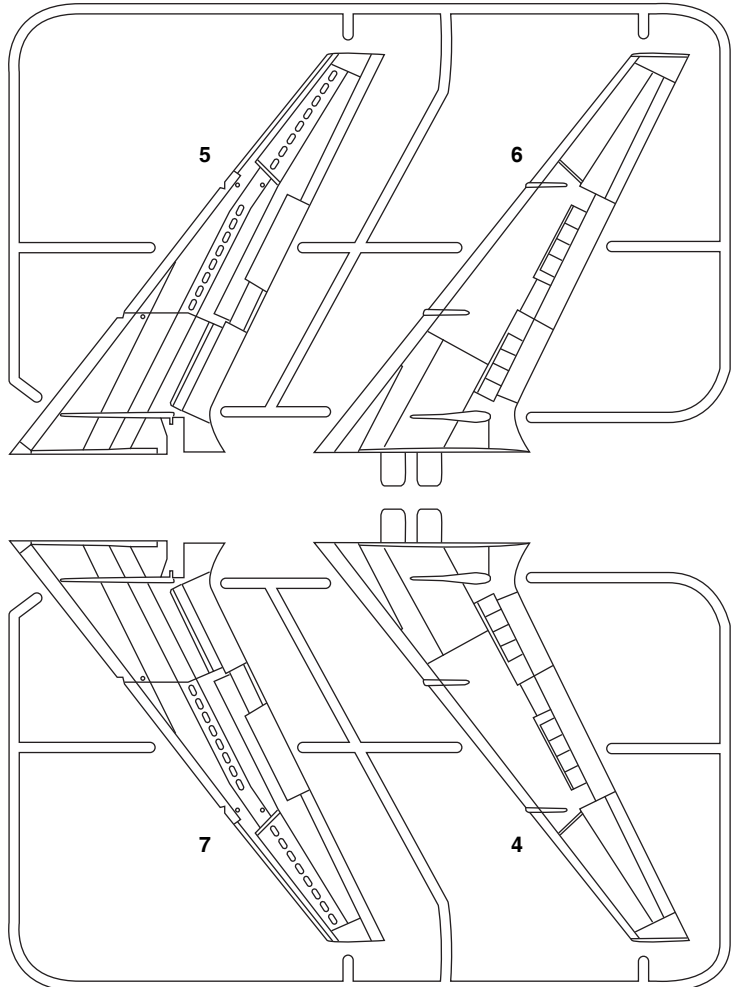
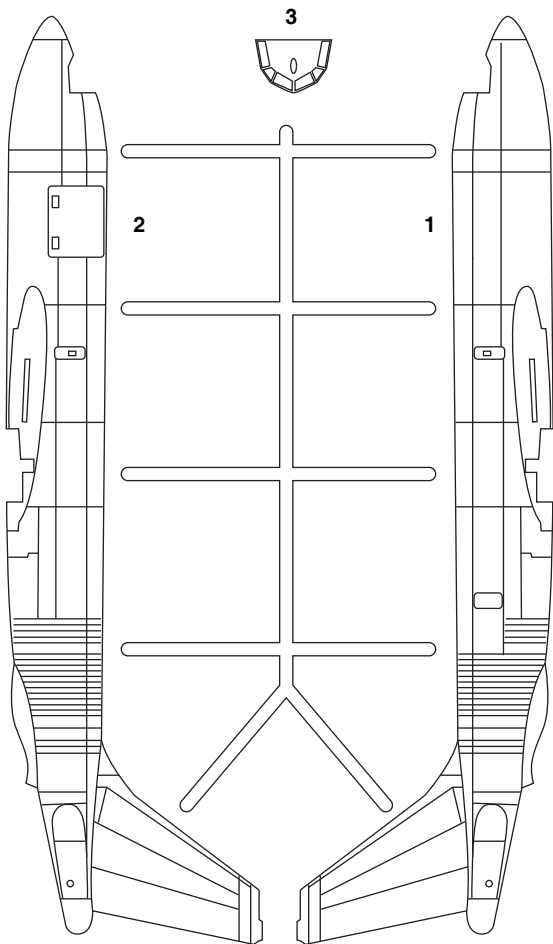
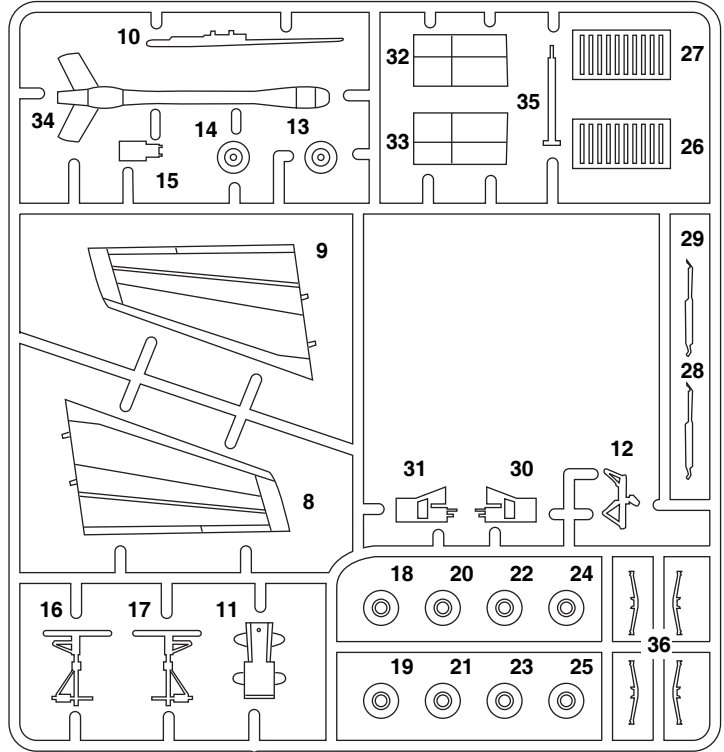
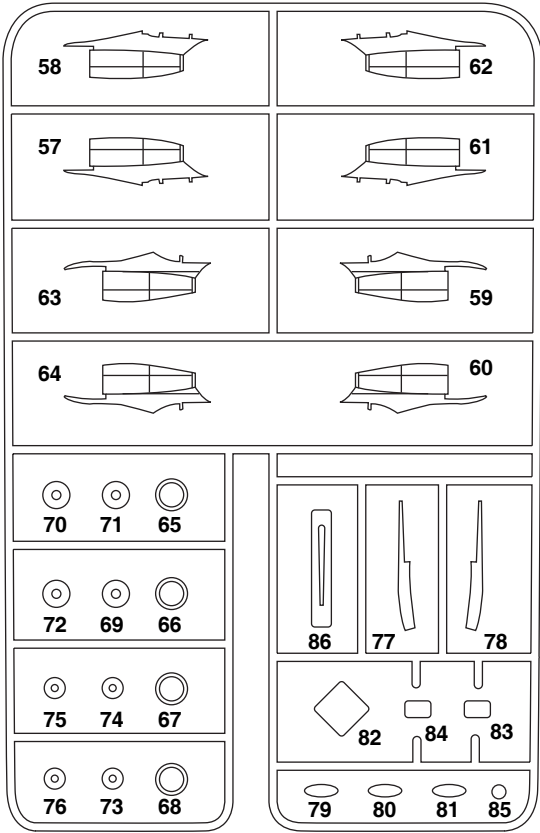


**PARTS LOCATING DIAGRAM**

**EC-135C #14709**





Cement  
Collet  
Kleben  
Pegar  
Incollare  
Colar  
Kleven



DO NOT Cement  
Ne pas Collet  
Nicht Kleben  
No Pegar  
Non Incollare  
Nao Colar  
Niet Kleven



Cut away  
Couper  
Scheiden  
Cortar  
Tagliare  
Cortar  
Snijden



Optional parts  
Choix  
Auswahlmöglichkeit  
Elección  
Scelta  
Opaco  
Keuze



Repeat operation  
Rzpeeter / opzration  
Vorgang wiederholen  
Repitir la operacion  
Ripetere  
Repitir a operacao  
Herhalen



Symmetrical assembly

## BEFORE BEGINNING ASSEMBLY

Your MINICRAFT EC-135C has delicate parts by design for accuracy in this scale.

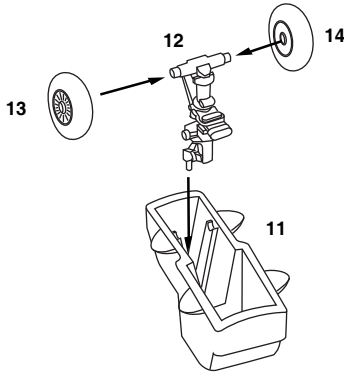
All parts should be cut from the parts sprue carefully with a hobby knife. A sprue cutter may damage smaller parts.

### 1 NOSE GEAR ASSEMBLY



All Parts

**NOTE**  
If you are building your model with  
**RETRACTED** landing gear, disregard this step.

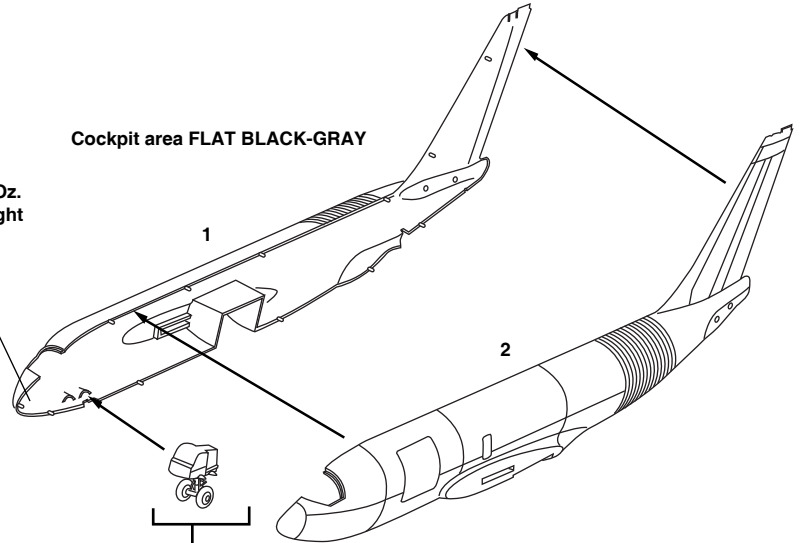


Wheel well interior GLOSS WHITE / PRIMER GREEN  
Strut & wheel hubs GLOSS WHITE / ALUMINUM  
Tires FLAT BLACK-GRAY

### 2 FUSELAGE ASSEMBLY

Cockpit area FLAT BLACK-GRAY

Add 1/2 Oz.  
Noseweight

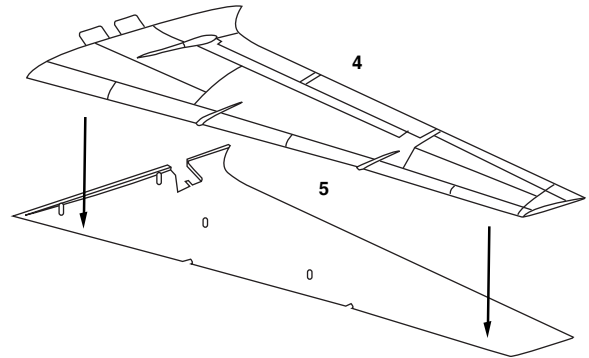
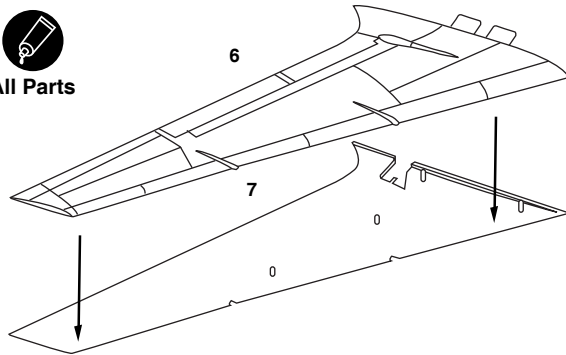


Step 1 EXTENDED landing gear only

### 3 LEFT / RIGHT WINGS



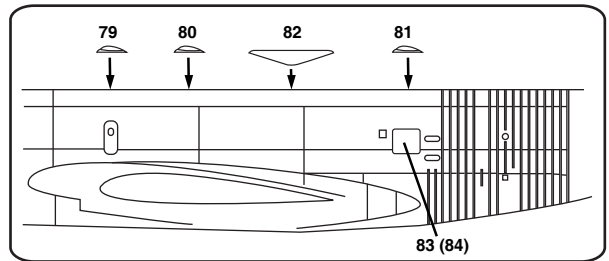
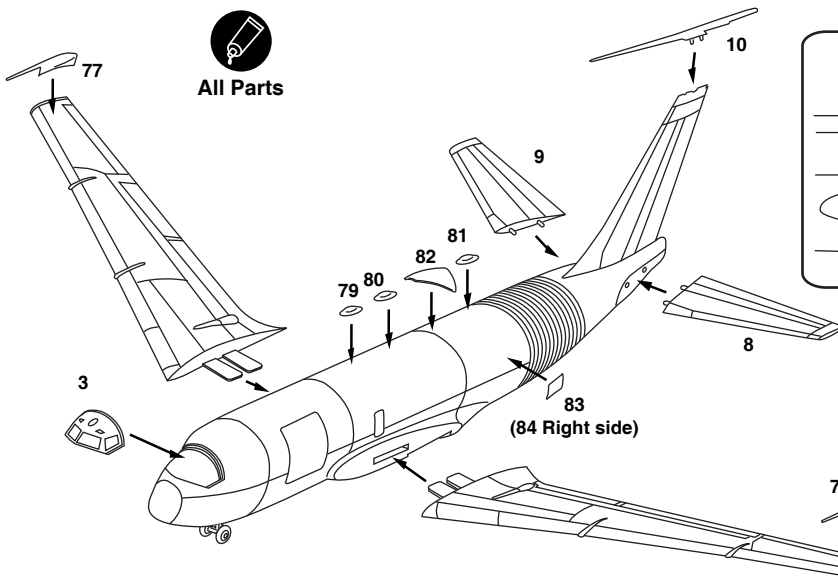
All Parts



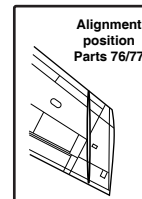
### 4 MAIN ASSEMBLY



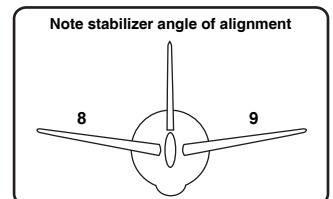
All Parts



Antennas 79/80/81/82 are centered on upper fuselage centerline.



Alignment  
position  
Parts 76/77



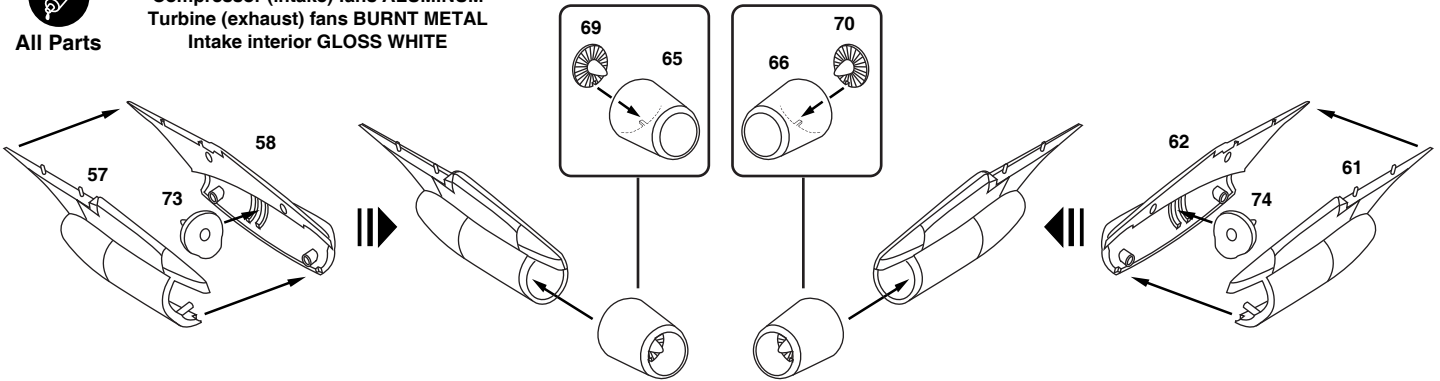
Note stabilizer angle of alignment

## 5 ENGINE ASSEMBLY (Outboard Engines)



All Parts

Compressor (intake) fans ALUMINUM  
 Turbine (exhaust) fans BURNT METAL  
 Intake interior GLOSS WHITE

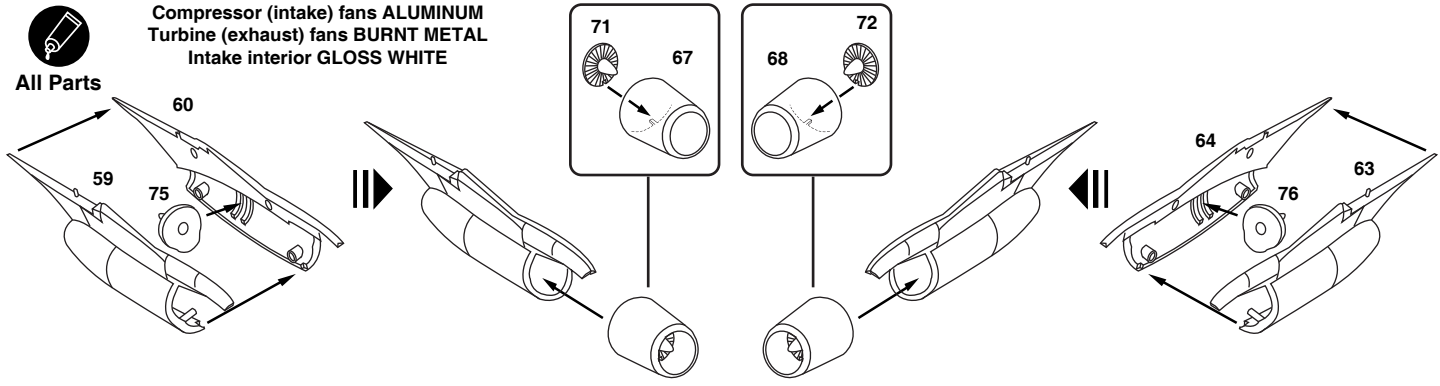


## 6 ENGINE ASSEMBLY (Inboard Engines)



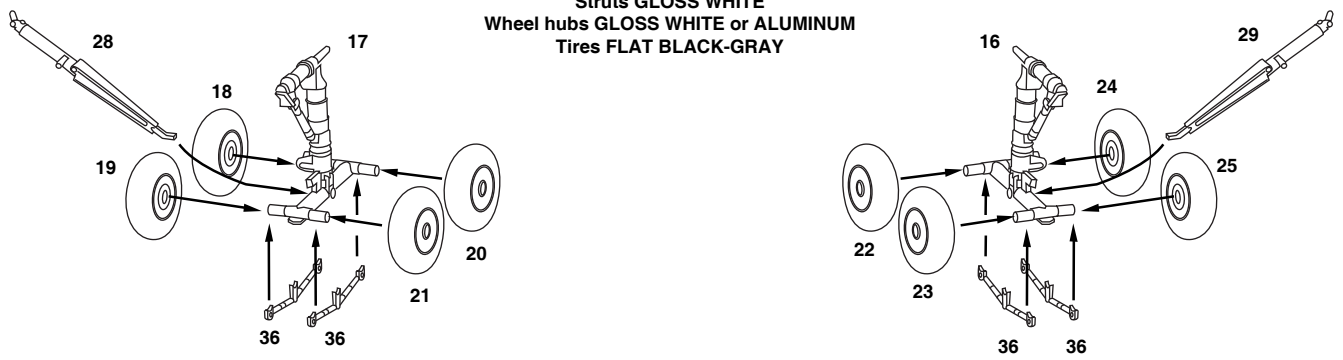
All Parts

Compressor (intake) fans ALUMINUM  
 Turbine (exhaust) fans BURNT METAL  
 Intake interior GLOSS WHITE



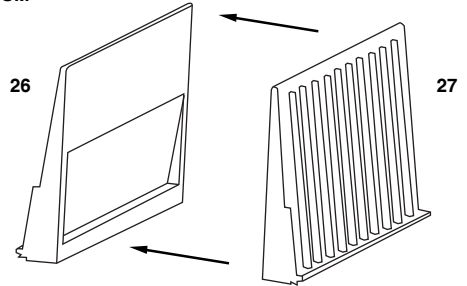
## 7 MAIN LANDING GEAR

Struts GLOSS WHITE  
 Wheel hubs GLOSS WHITE or ALUMINUM  
 Tires FLAT BLACK-GRAY



## 8 BALLAST TANK

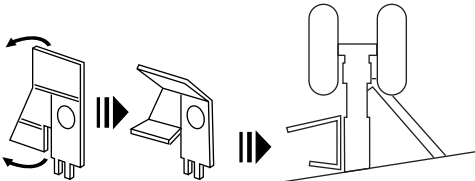
GLOSS WHITE, INTERIOR GREEN or ALUMINUM




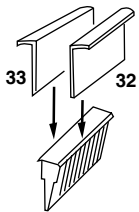
# 9 FINAL ASSEMBLY (Extended Landing Gear)

 All Parts

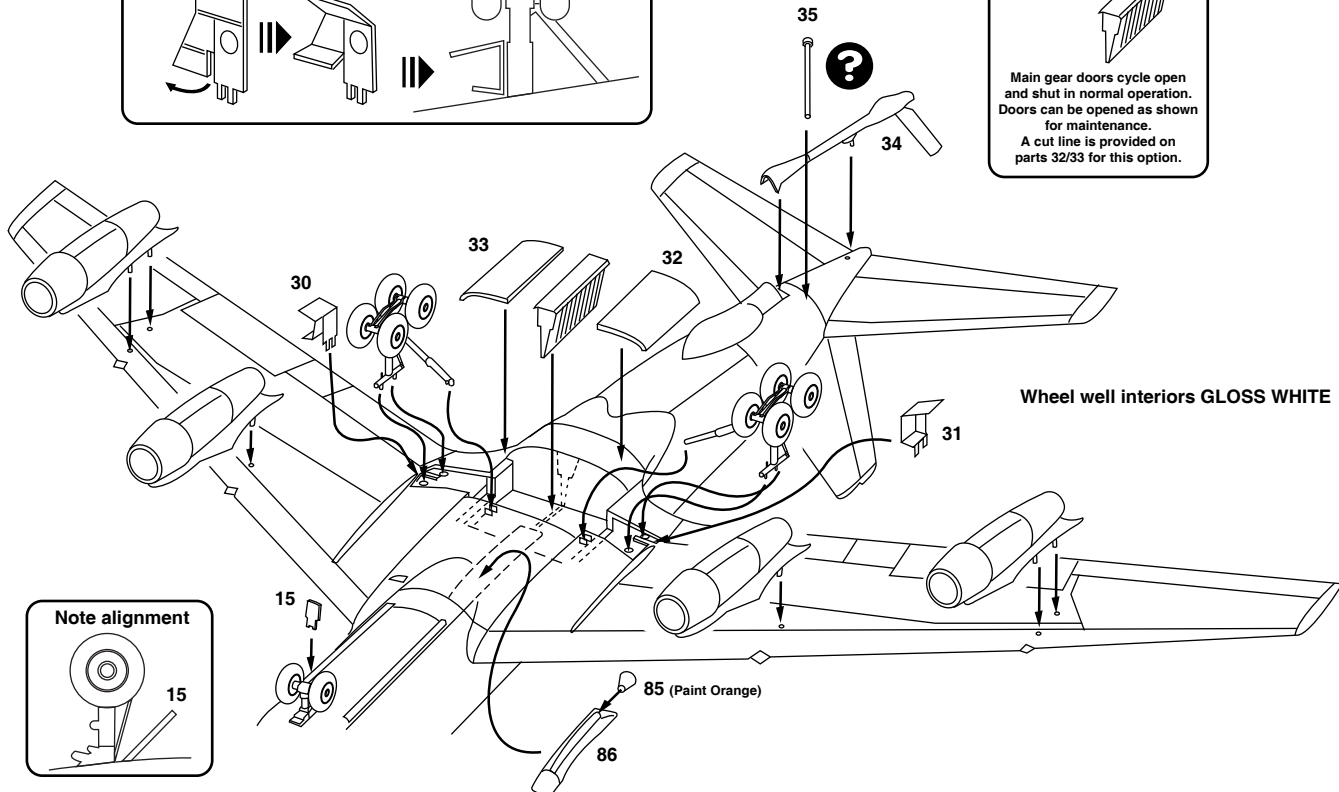
**IMPORTANT**  
Carefully bend landing gear door parts 30/31 into position shown before assembling.



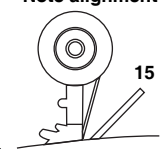
**NOTE**  
Part 35 is an optional tail stand used on fully loaded aircraft, generally painted Yellow.

Main gear doors cycle open and shut in normal operation. Doors can be opened as shown for maintenance. A cut line is provided on parts 32/33 for this option.



**Note alignment**



# 10 FINAL ASSEMBLY (Retracted Landing Gear)

 All Parts

Cut away pins from parts 30/31 