

RDAF F-16B

Press to Test Vikings



RDAF F-16B "Press to test Vikings"

The F-16 originated in a 1972 Air Force request for a lightweight air combat fighter (LWF) which was intended as a lower cost companion to the F-15 Eagle. Prototypes began flight testing in 1974 and it was announced as the winner of the LWF competition in 1975. The first full production aircraft were delivered to the Air Force in 1978. Officially named Fighting Falcon the F-16 is almost universally called "Viper" by its pilots. The name was taken from the fighter featured in the television series "Battlestar Galactica" which first aired at the time the F-16 was entering service. The two-seat F-16B is a fully combat capable trainer which retains the full capabilities and performance of the single seat version. Production of the F-16 has outlasted the company that designed it. General Dynamics was bought by Lockheed-Martin in 1993. As of 2017 a total of twenty-seven countries have operated the F-16 with more than 4,500 built. Production is expected to continue through 2017 and Fighting Falcons will likely continue to serve for decades to come.

The F-16 is one of the most popular jet fighters in history. Known as the "Viper", the F-16 currently serves in the Air Forces of 26 nations around the world. The aircraft on display is an F-16B, the second B model built, a two-seat combat capable trainer. This particular aircraft is a demonstrator utilized by Lockheed-Martin to highlight the F-16's capabilities to interested countries considering it for purchase.

CAUTION

- *Read carefully and fully understand the instructions before commencing assembly.
- *Keep out of reach of children. Children must not be allowed to put any parts in their mouths, or pull plastic bag over their heads.
- *When using adhesives and paints, please make sure not to use them in closed room or near the fire.
- *When assembling this kit, tools including knives are used. Extra care should be taken to avoid injury.

WARNING: CONTAIN SMALL PARTS NOT FOR CHILDREN UNDER 14 YEARS OF AGE.



Drill



Remove



2 Set



Bend



Optional



Decal



Super Glue



Fill Hole



No Cement



Be Careful

TOOLS RECOMMENDED

Cement



Side Cutter



Modeling Knife



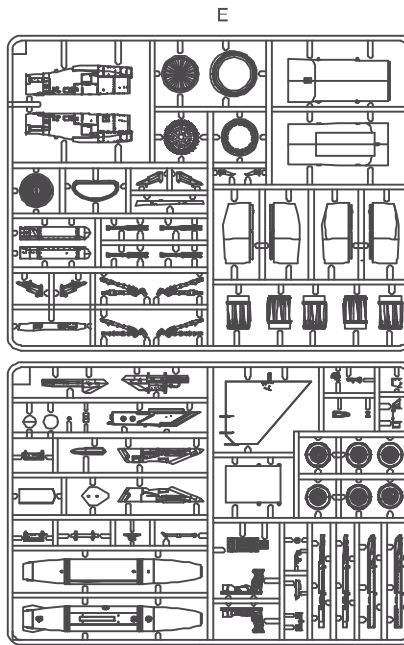
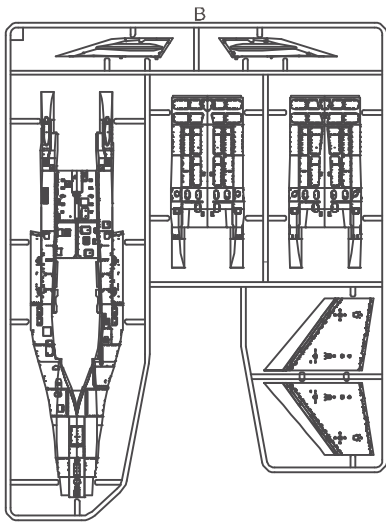
Tweezers



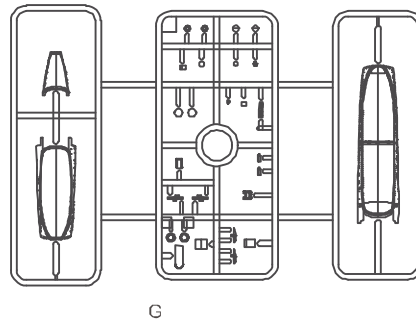
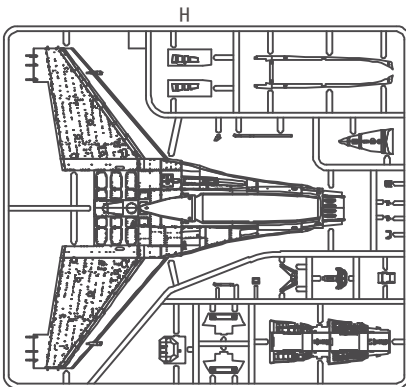
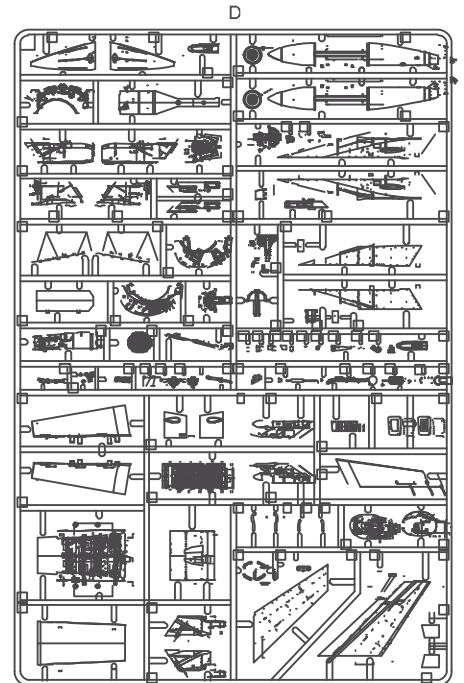
AFTERMARKET SERVICES CARD

When requesting replacement parts, please take or send this form to your local dealer so that the parts required can be correctly identified. Please note that specifications and availability are subject to change without notice. Or visit <http://www.kineticmodel.com> for latest information. For more information, please contact services@kineticmodel.com

Part Code	K48159	Qty	Item
00-180-002	1/48 F-16 LOWER FUESLAGE	1	B
00-180-004	1/48 F-16 MAIN PARTS	1	D
00-180-005	1/48 NSI INTAKE and LANDING GEAR	1	E
00-180-006	1/48 F-16 FUEL TANKS, SEATS	2	F
00-180-007	1/48 F-16 CANOPY	1	G
00-180-008	1/48 F-16D UPPER FUESLAGE	1	H
01-180-48159	1/48 F-16BM	1	DECAL
03-180-48159	1/48 F-16BM	1	MANUAL



Fx2

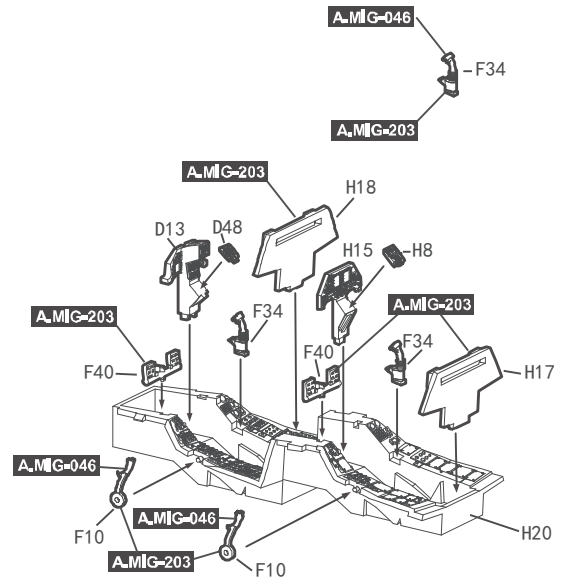
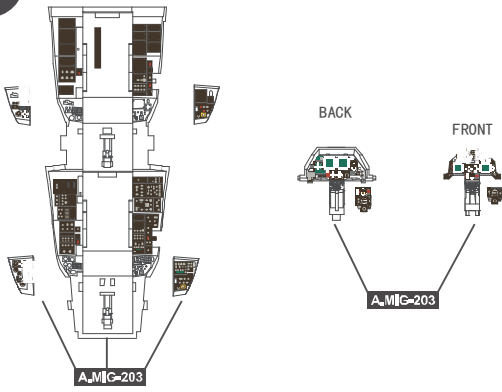




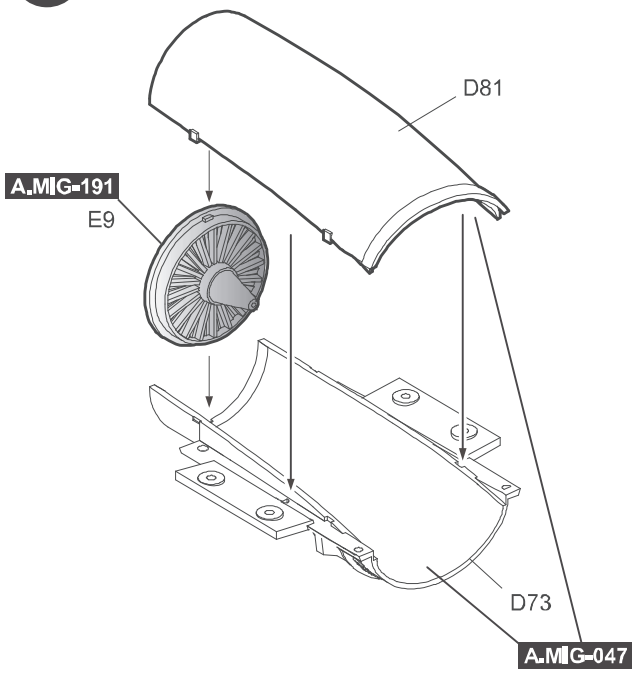
COLOR	AMMO MIG	VALLEJO MODEL COLOR	GSI CREOS MR. COLOR	TAMIYA ENAMEL/ACRYLIC	HUMBROL ENAMEL
DARK BLUE	-	-	326	-	-
SATIN BLACK	A.MIG-032	70.937	2	X-18	21
GUN METAL	A.MIG-045	70.863	78	X-70	53
MATT BLACK	A.MIG-046	71.057	33	XF-1	33
SATIN WHITE	A.MIG-047	70.842	1	X-2	22
YELLOW	A.MIG-048	71.002	4	XF-3	69
BLUE	A.MIG-086	71.089	323/5	X-4	14
CRYSTAL RED	A.MIG-093	70.934	47	X-27	220
CRYSTAL BLUE	A.MIG-098	70.938	50	X-23	-
BLOOD RED	A.MIG-121	-	327	-	-
BURNT IRON	A.MIG-187	71.073	61	XF-4	-
STEEL	A.MIG-191	70.864	28	-	27003
SILVER	A.MIG-195	71.063	8	X-11	11
GOLD	A.MIG-198	71.066	9	X-12	16
GHOST FRAY FS 36375	A.MIG-203	70.990	308	-	-
GUNSHIP GRAY FS 36118	A.MIG-204	71.047	305	XF-77	125
FS 36320	A.MIG-208	71.120	307	-	128
FS 36495	A.MIG-209	71.276	338	-	-
FS 36270	A.MIG-211	71.275	306	-	126
DARK OILVE DRAB	A.MIG-237	70.861	12	XF-62	-

For Color Profile, please go to www.kineticmodel.com for download
(type the kit# and go for manual/painting guide)

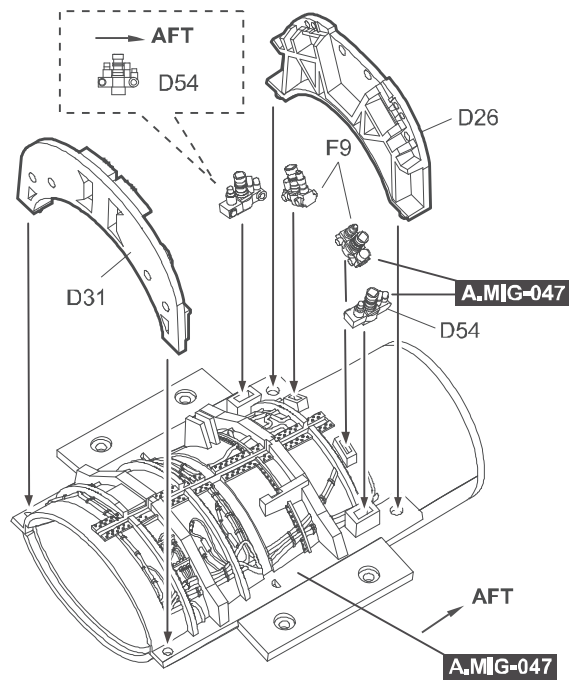
1



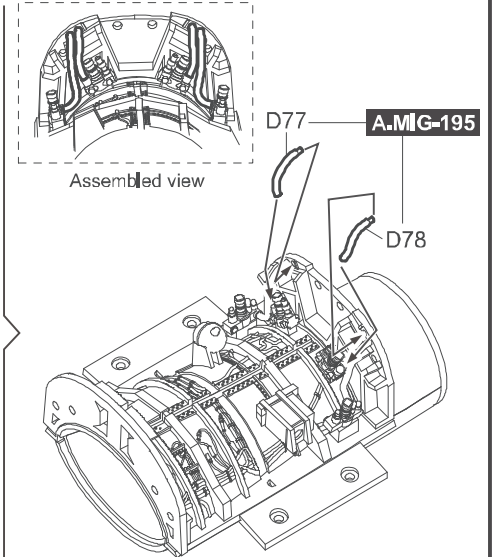
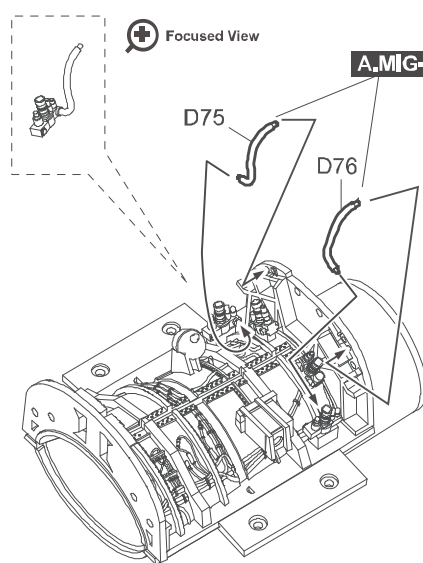
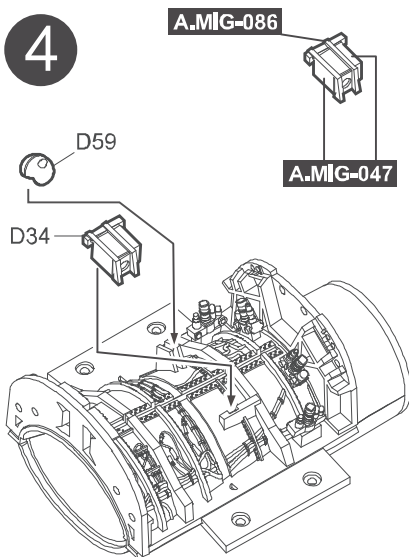
2



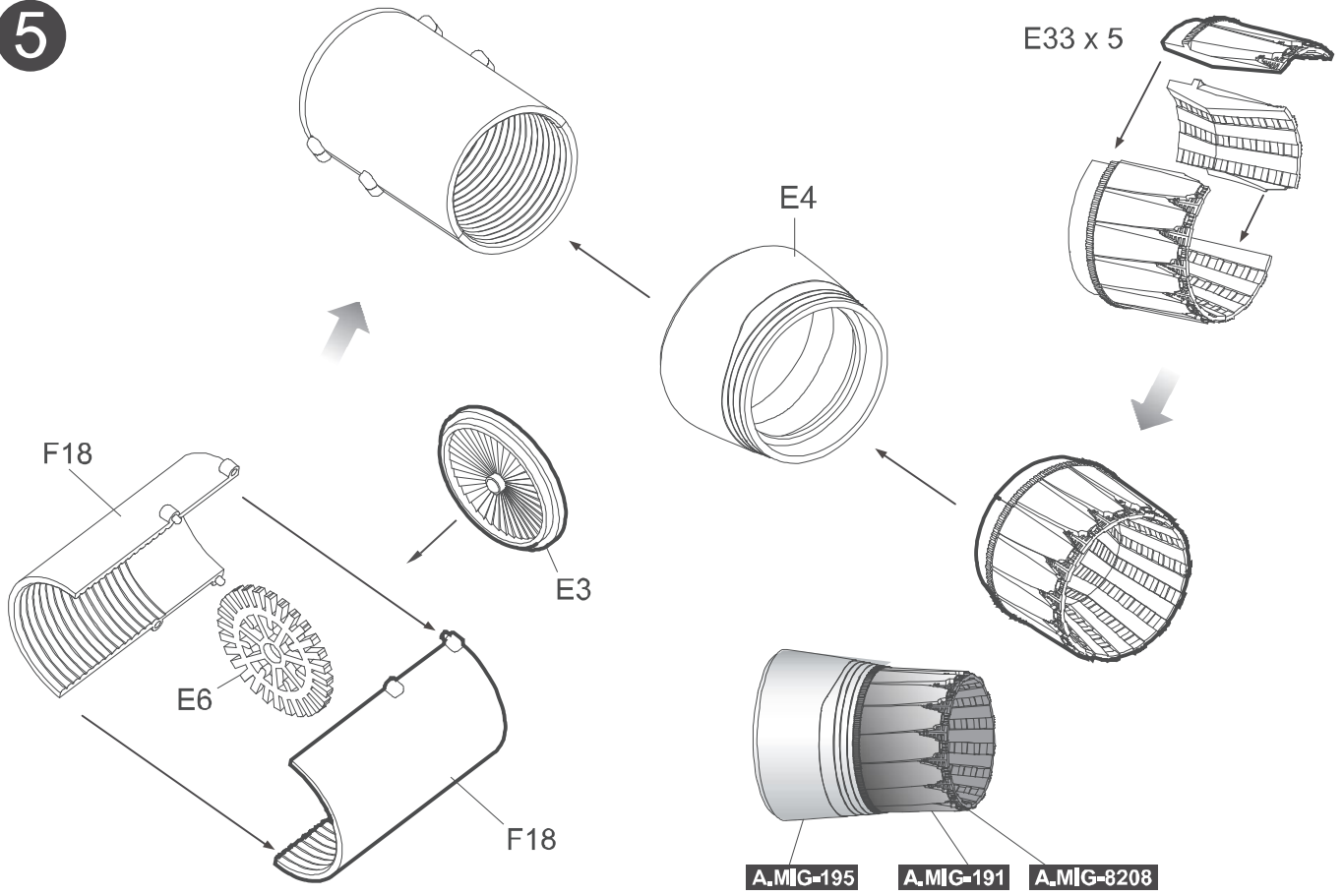
3



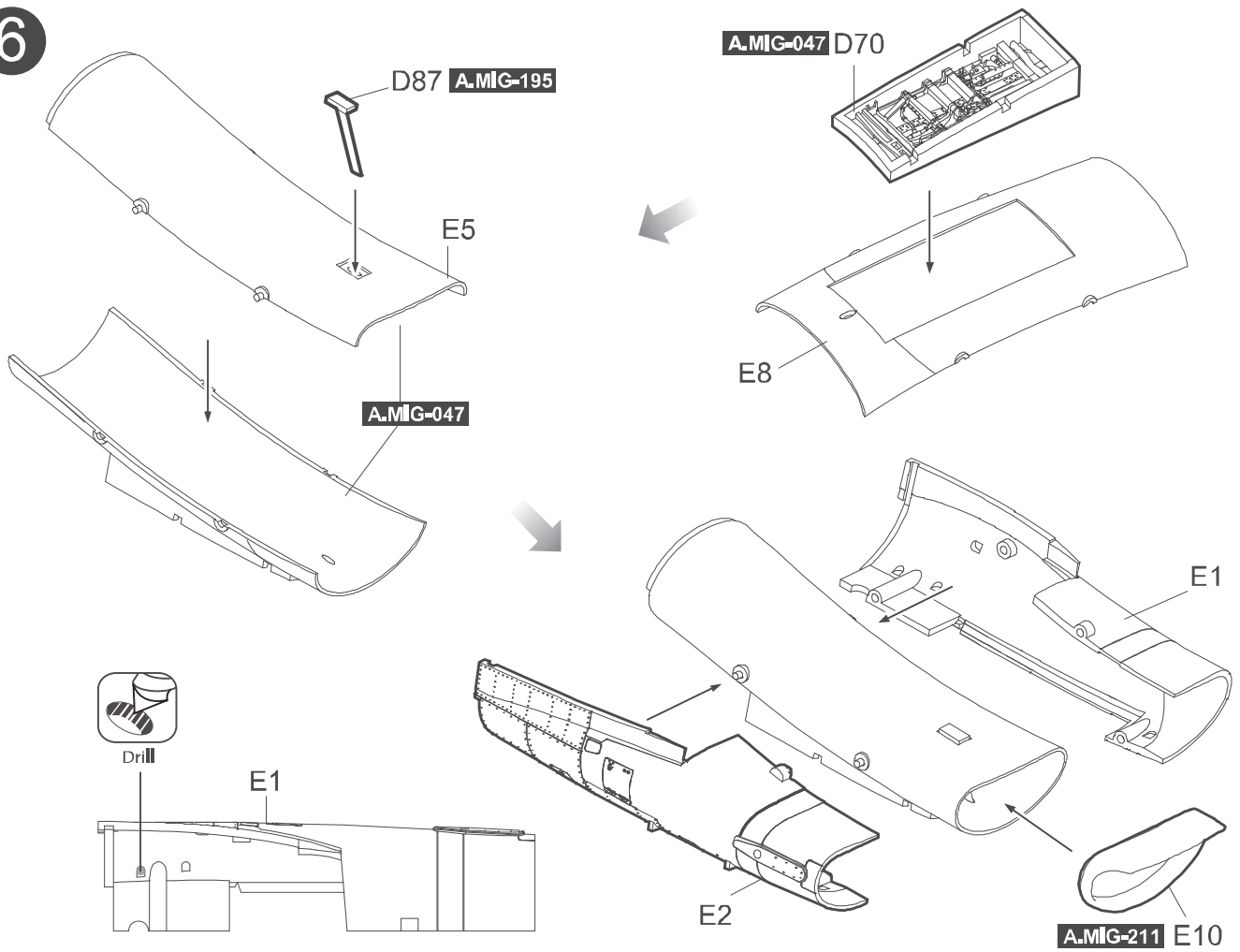
4



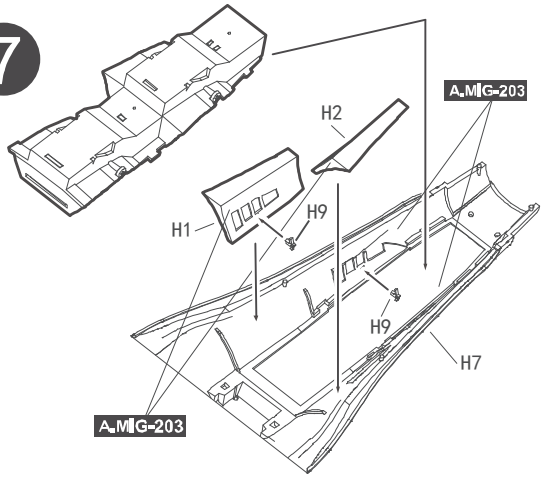
5



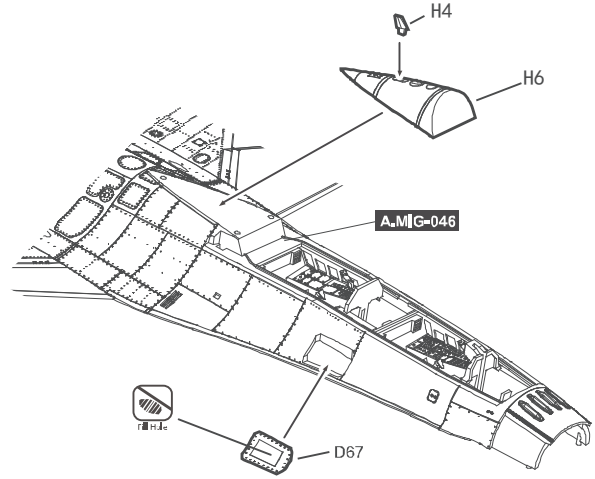
6



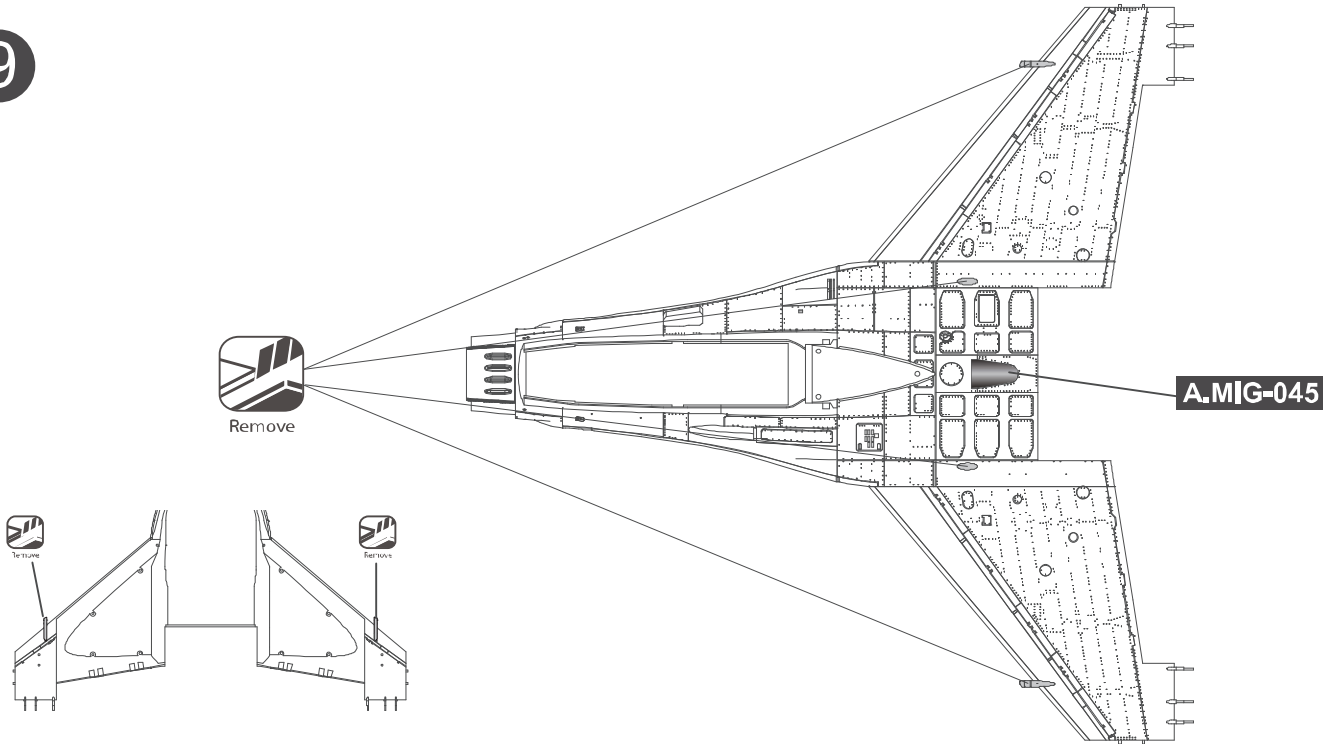
7



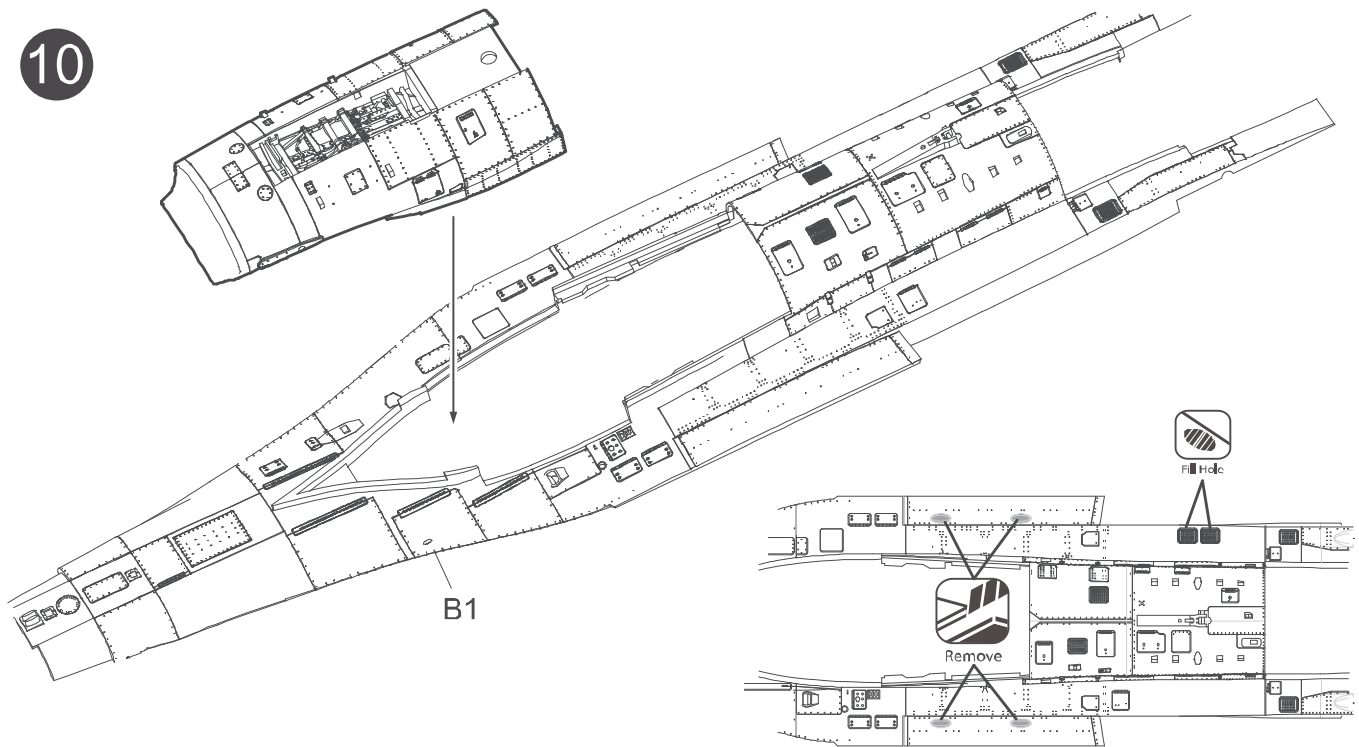
8



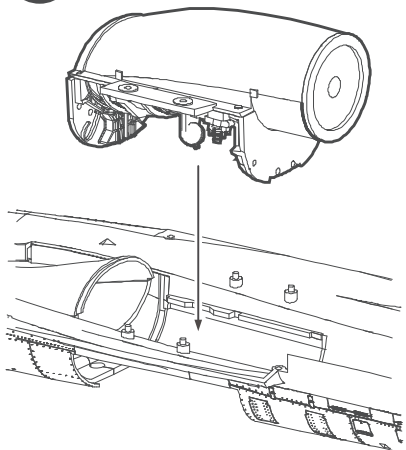
9



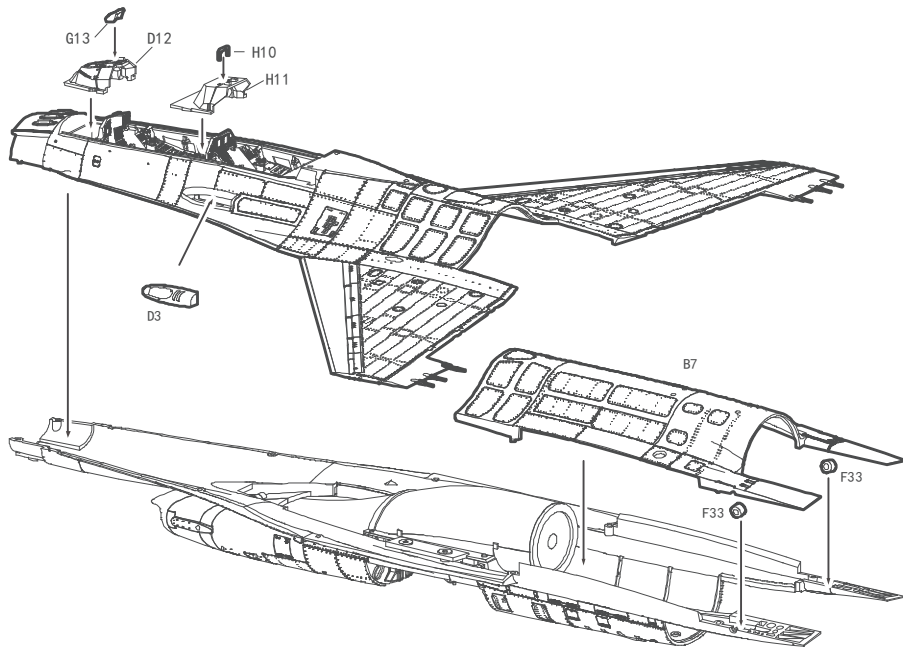
10



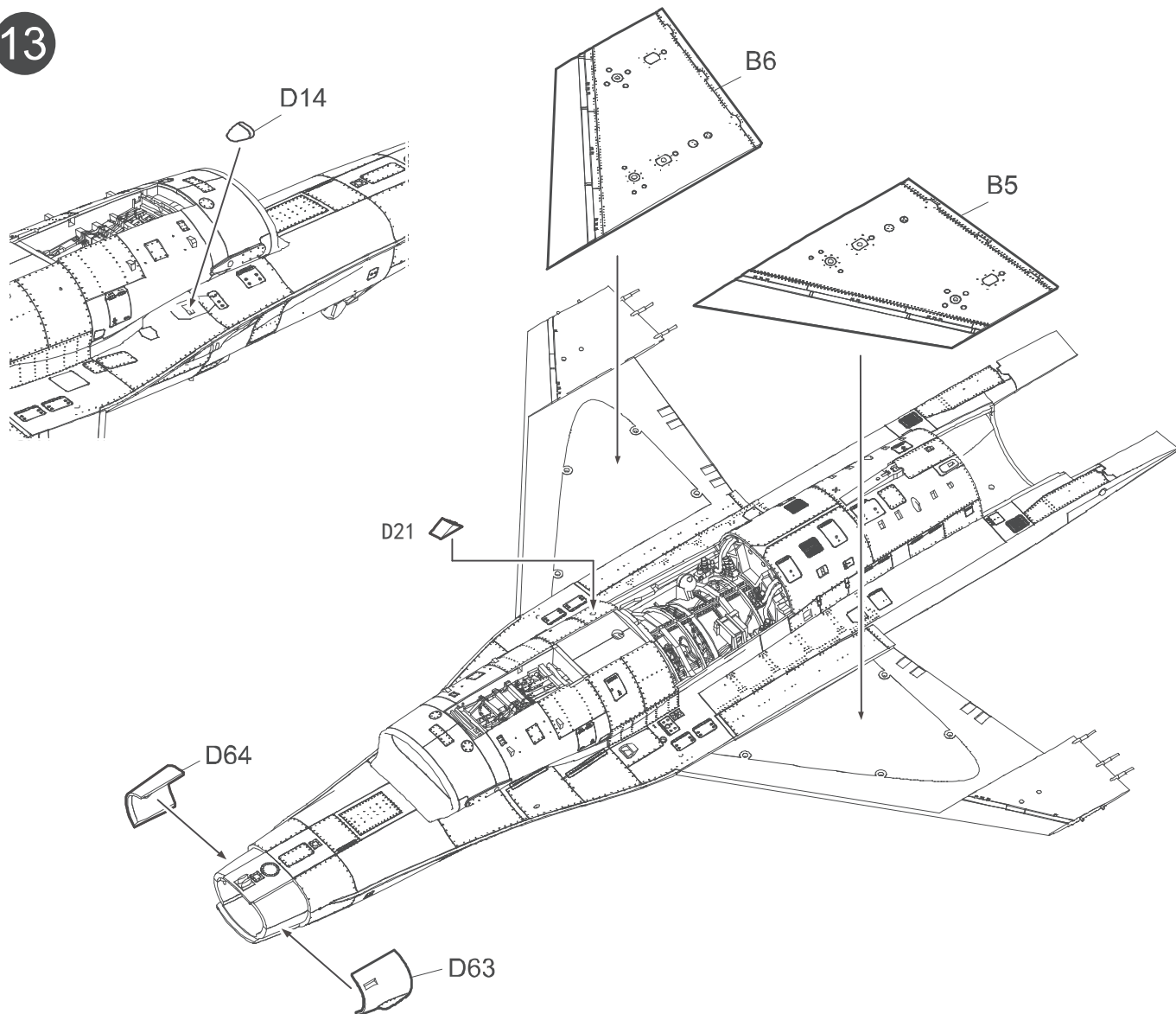
11



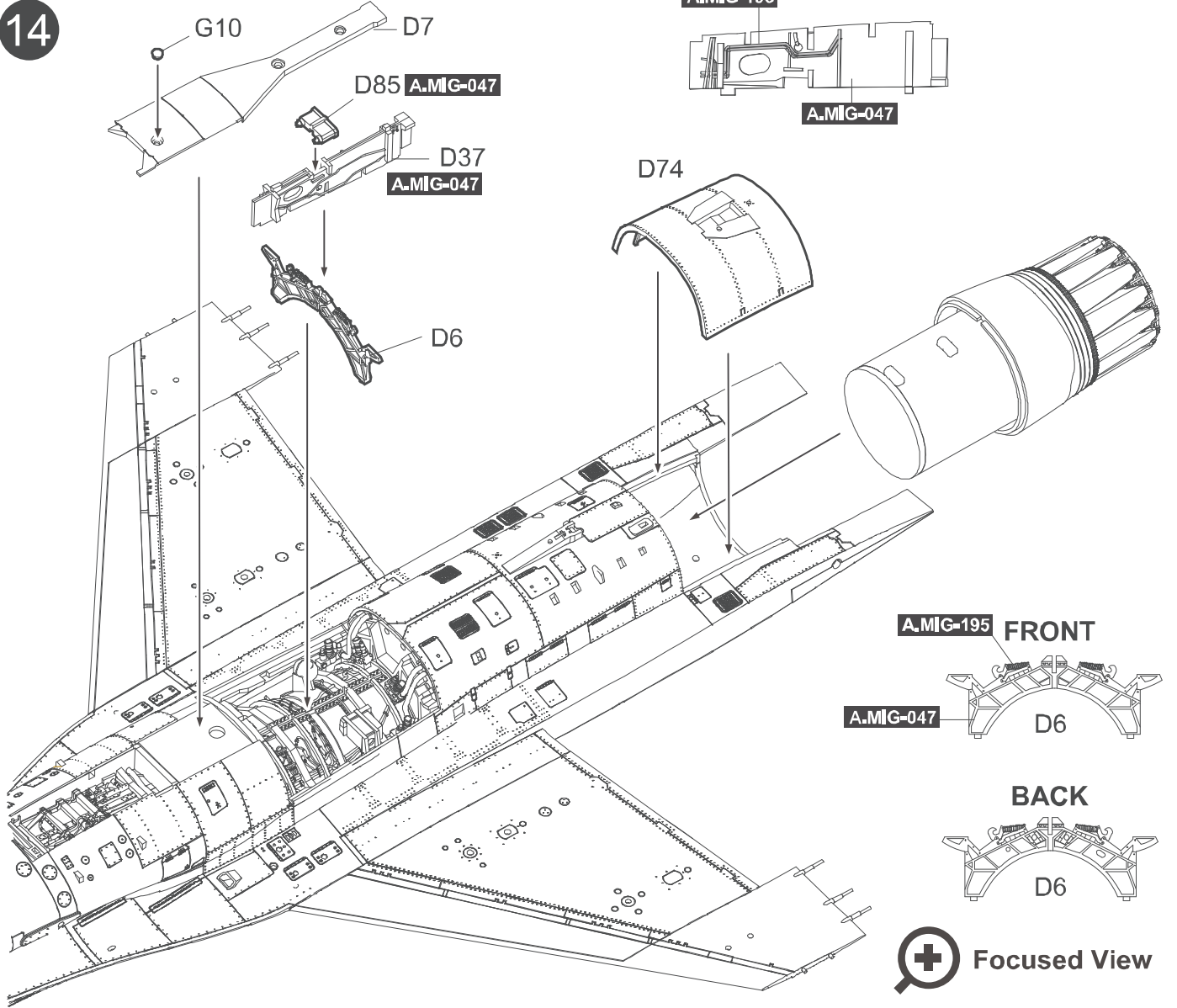
12



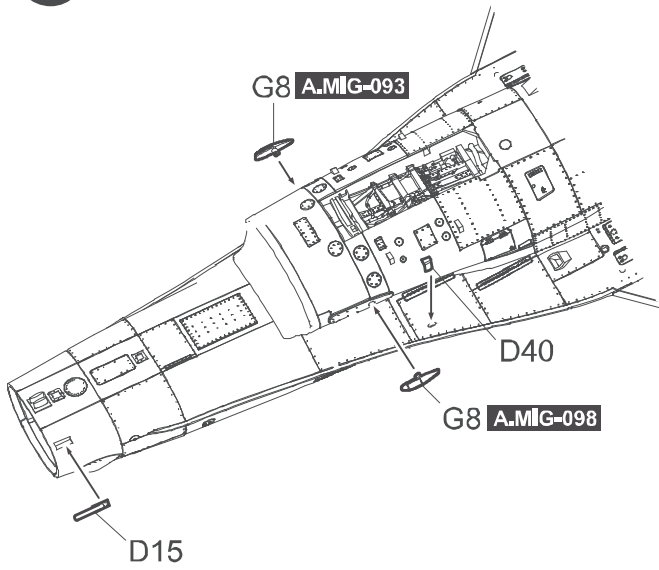
13



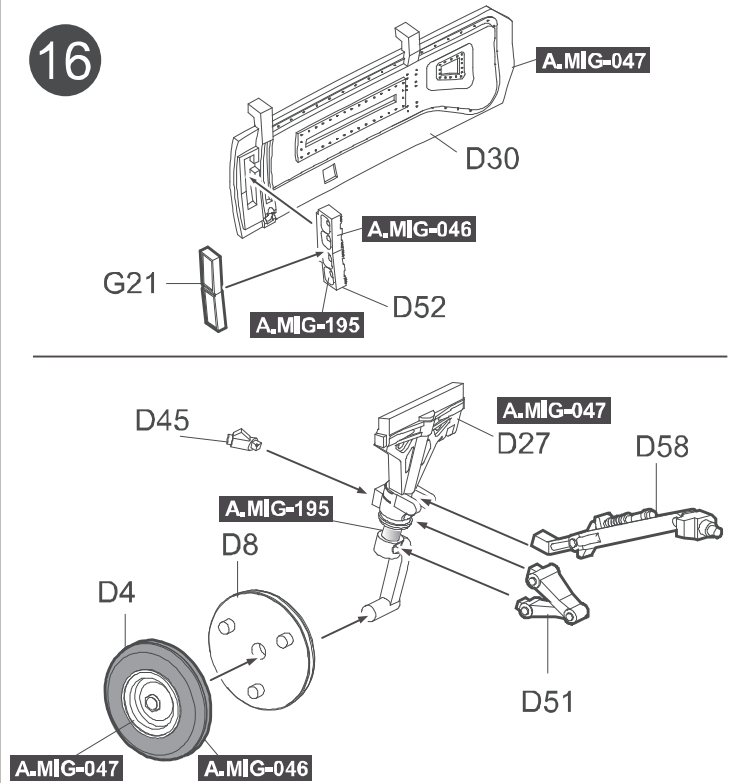
14



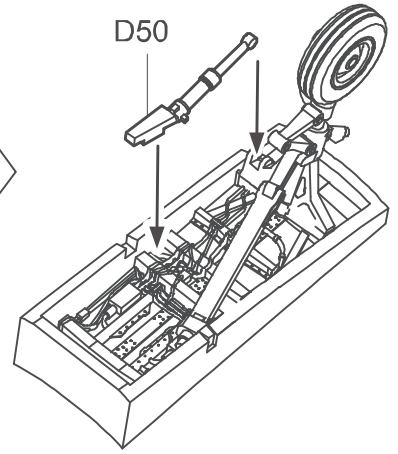
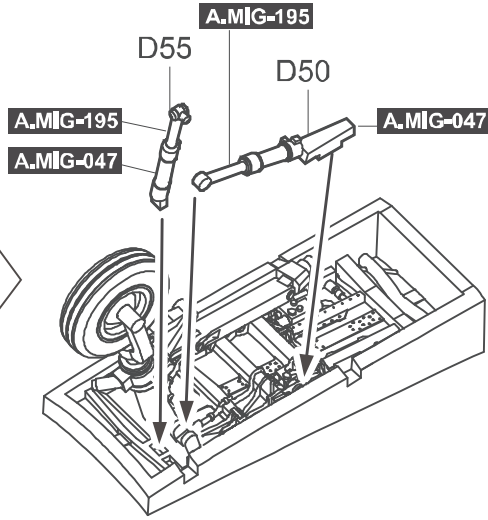
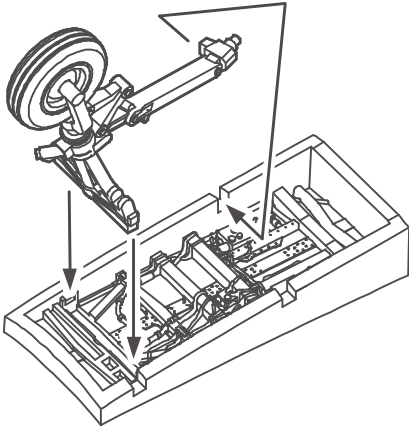
15



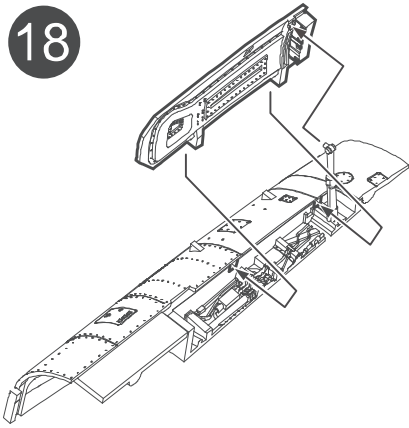
16



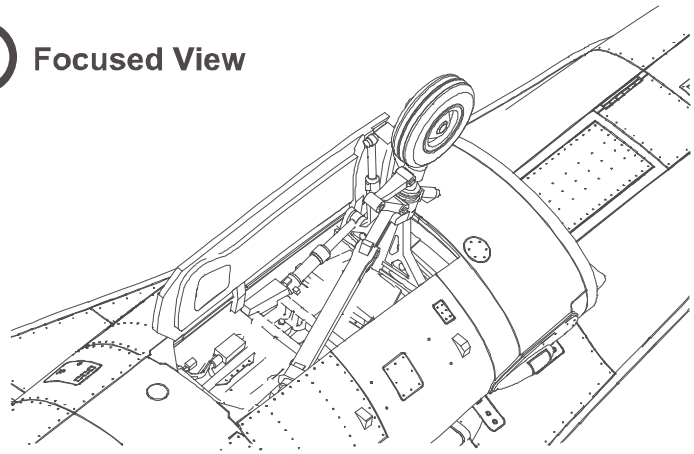
17



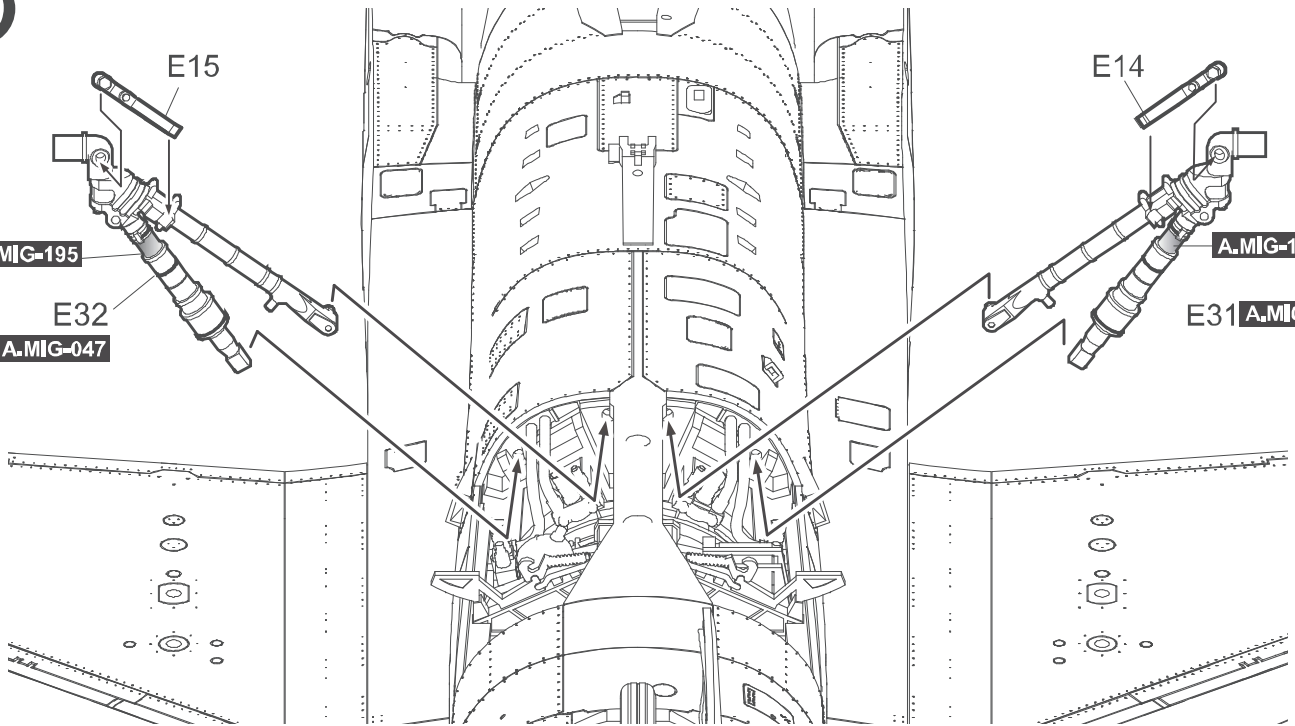
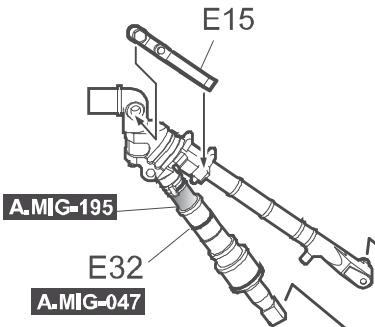
18



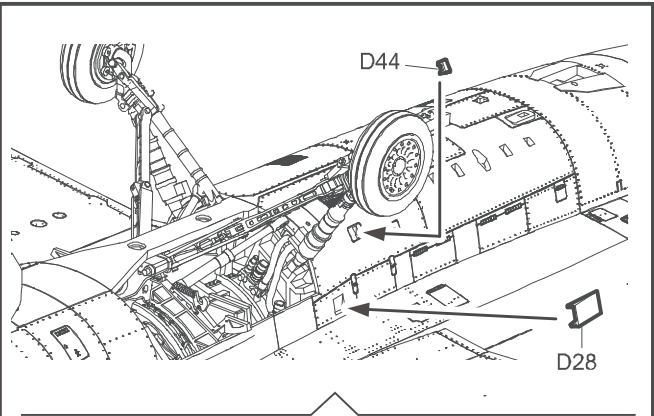
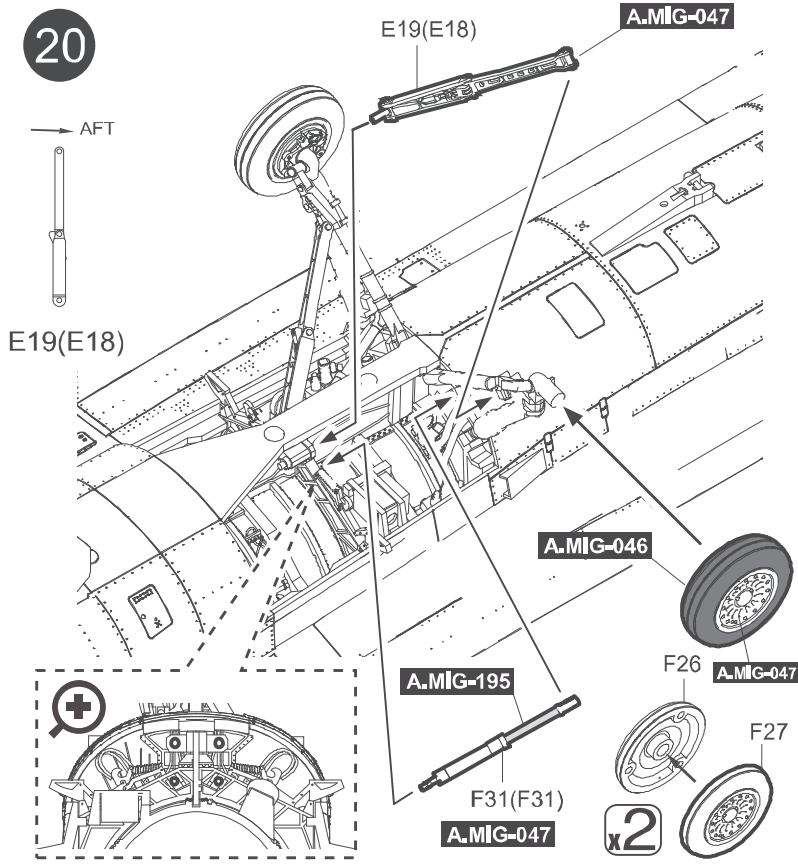
+ Focused View



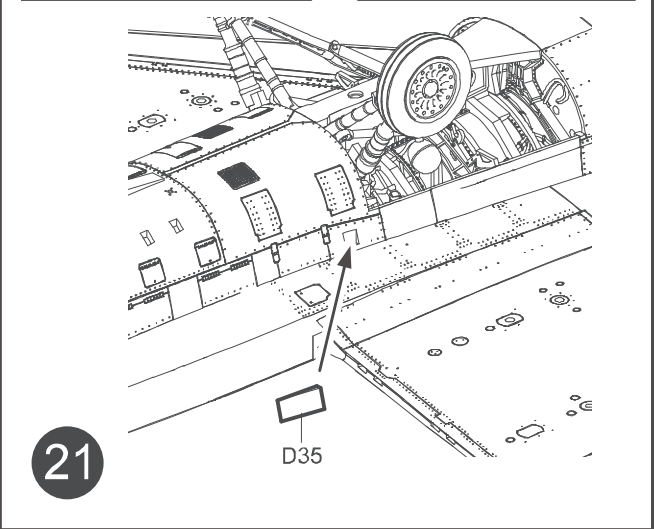
19



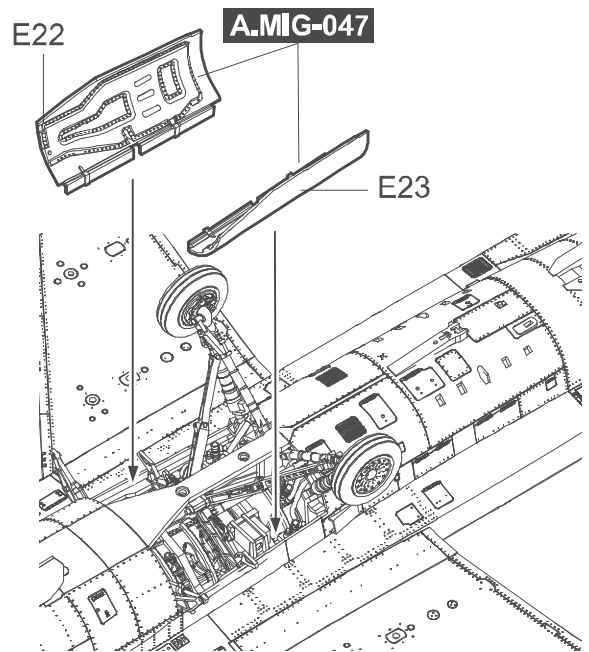
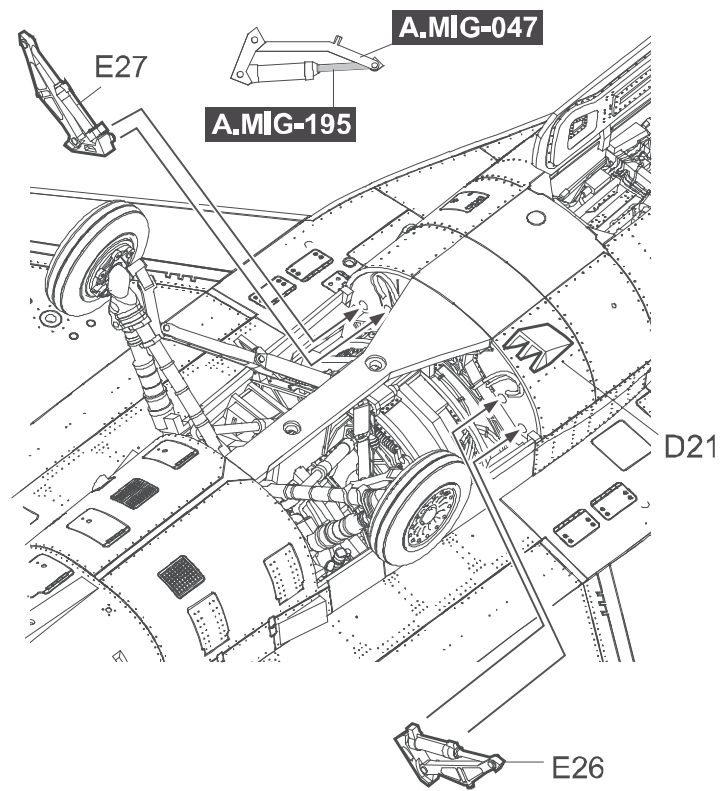
20



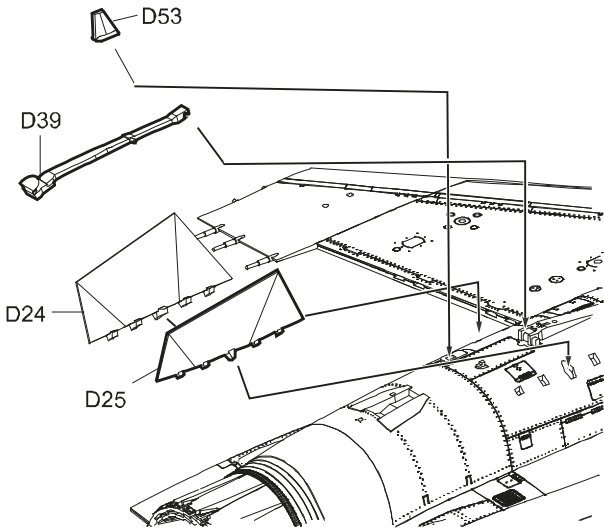
21



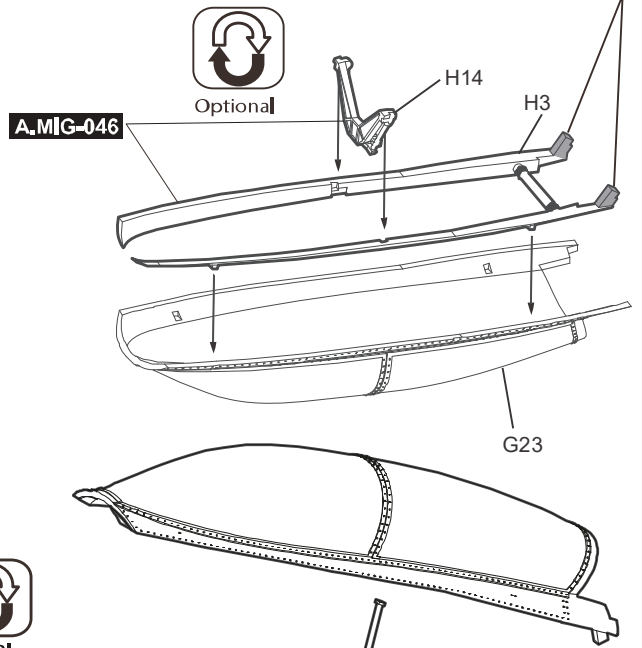
22



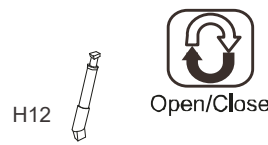
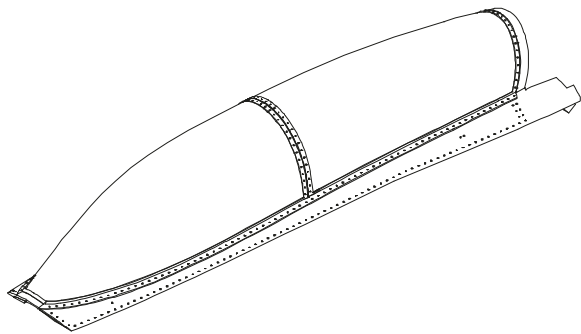
23



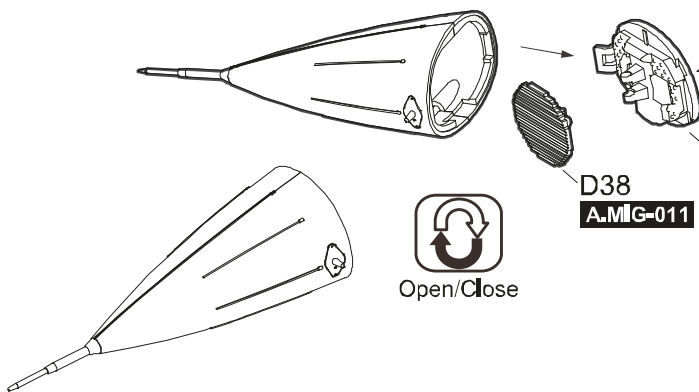
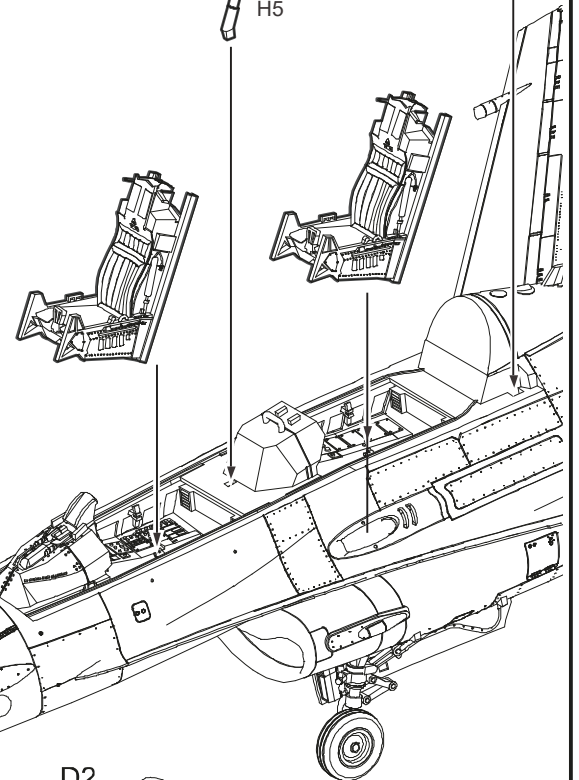
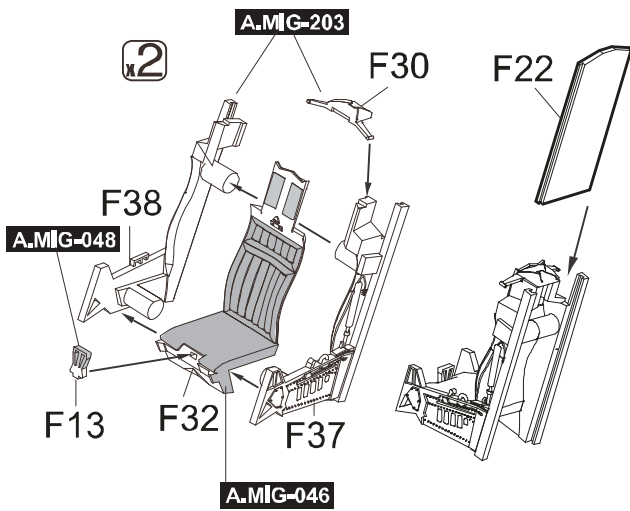
Cut for closed canopy option.



24

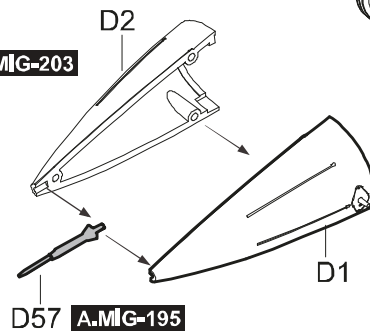


H5



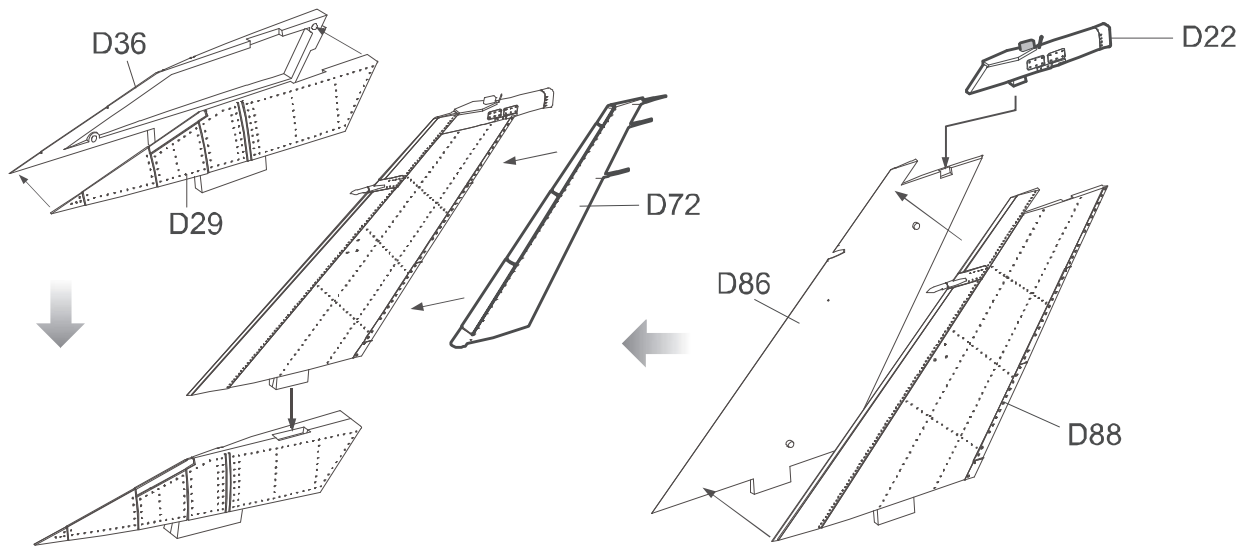
D79 A.MIG-203

D38 A.MIG-011

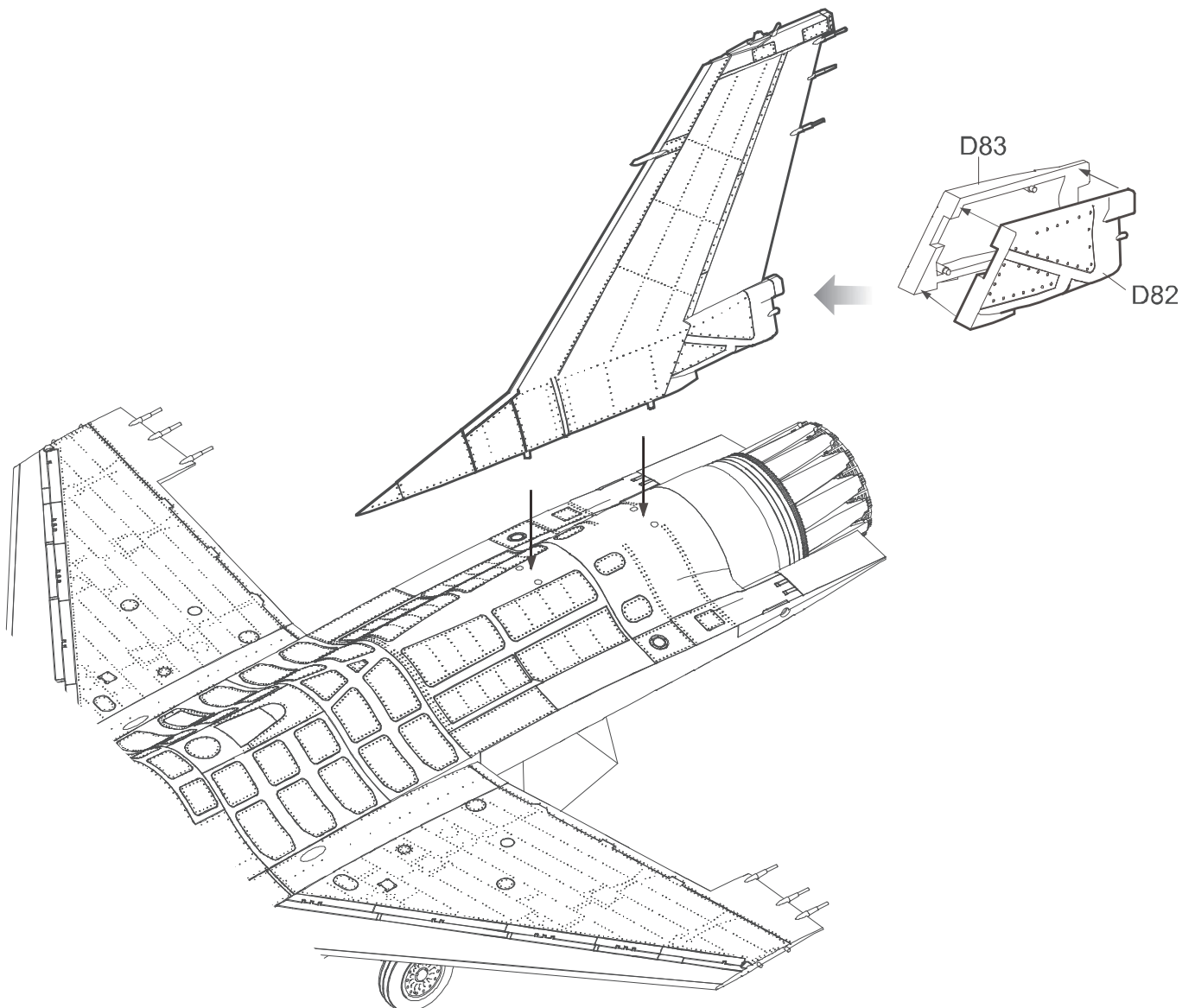


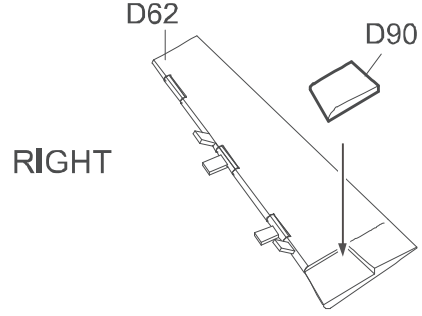
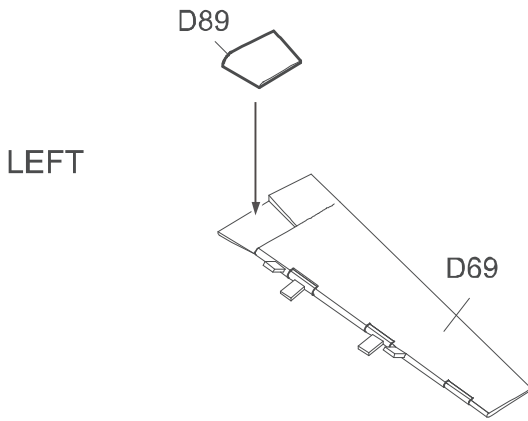
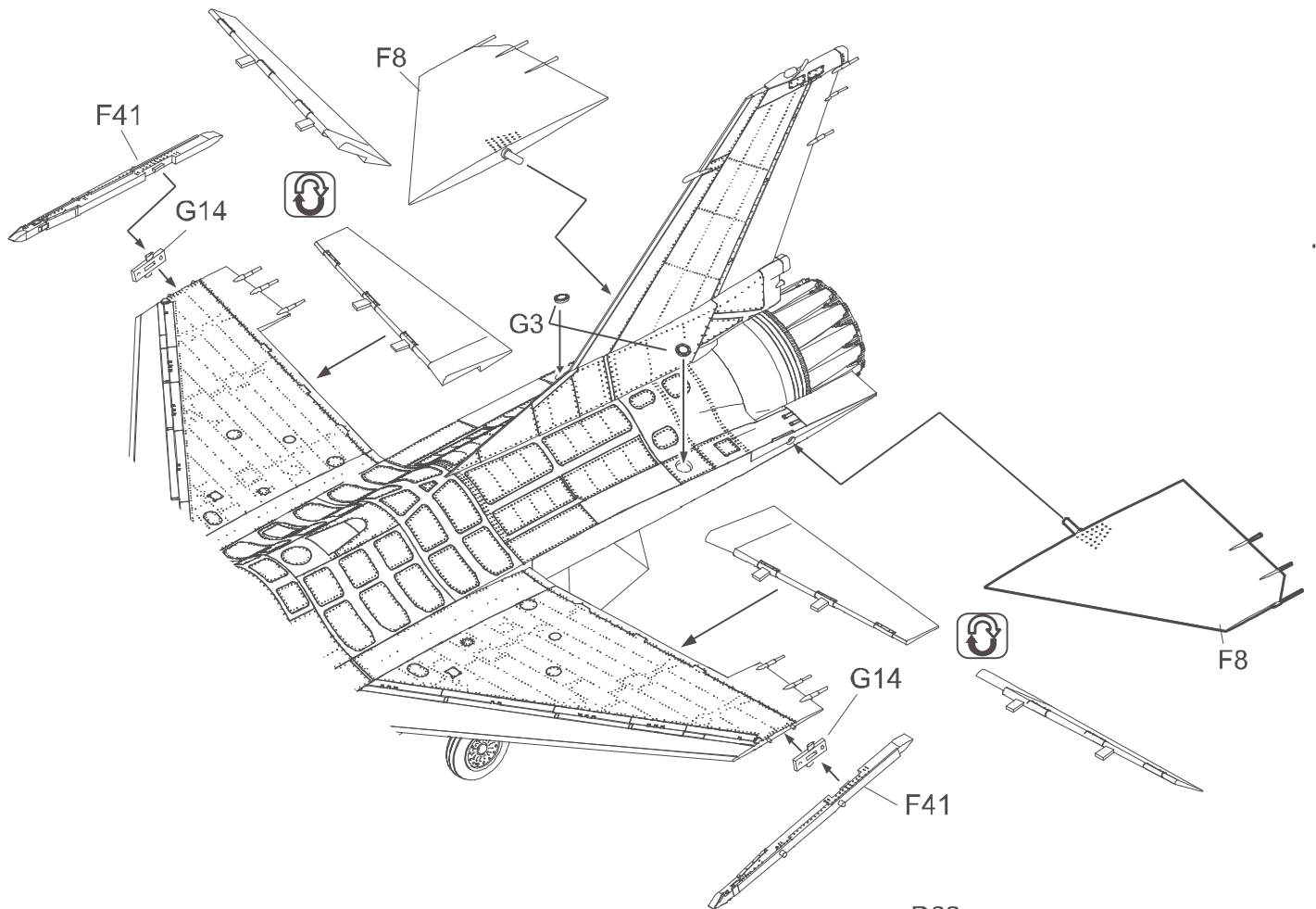
D57 A.MIG-195

25

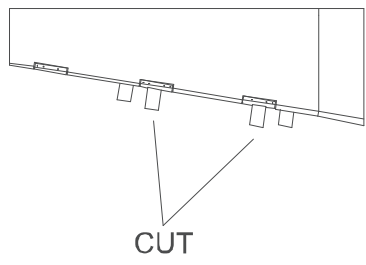


26

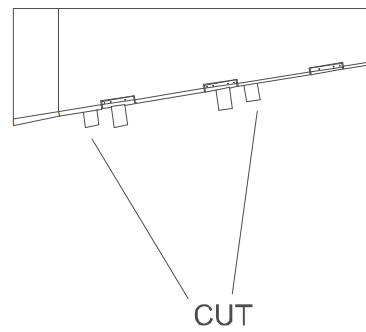




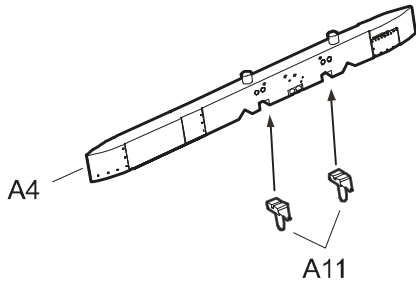
OPTIONAL FLAPS DOWN



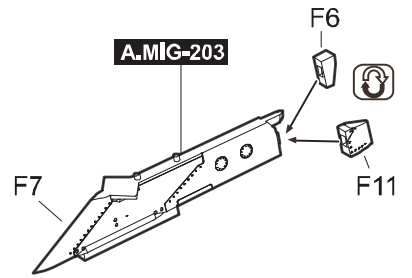
OPTIONAL FLAPS UP



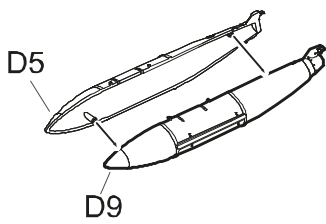
CENTENLINE PYLON



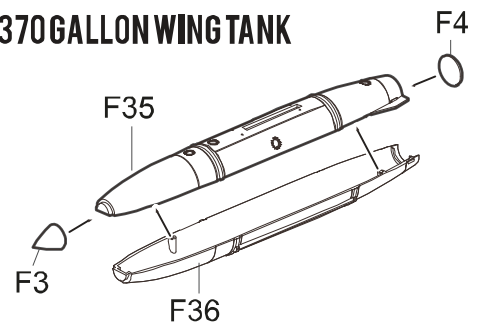
WING TANK PYLON



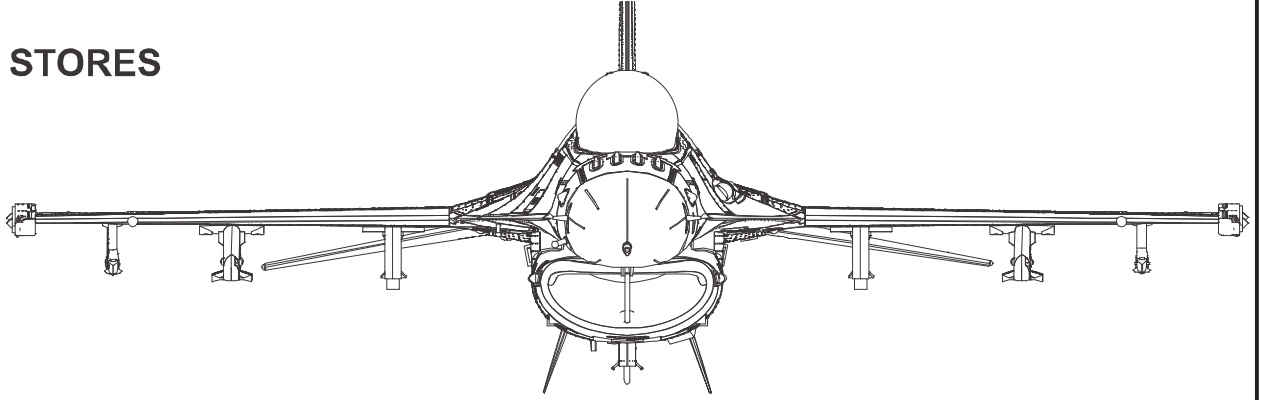
300 GALLON CENTENLINE TANK



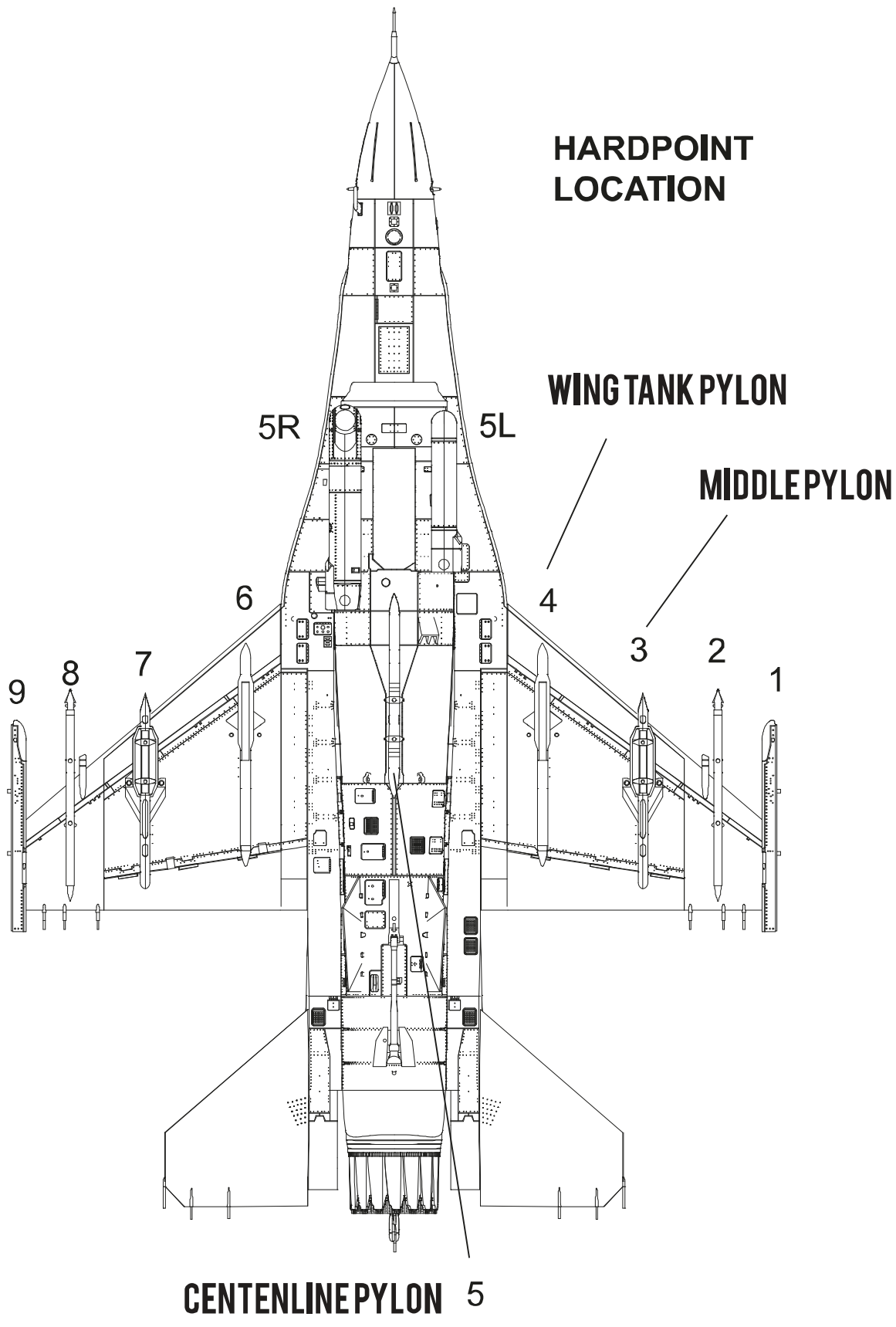
370 GALLON WING TANK



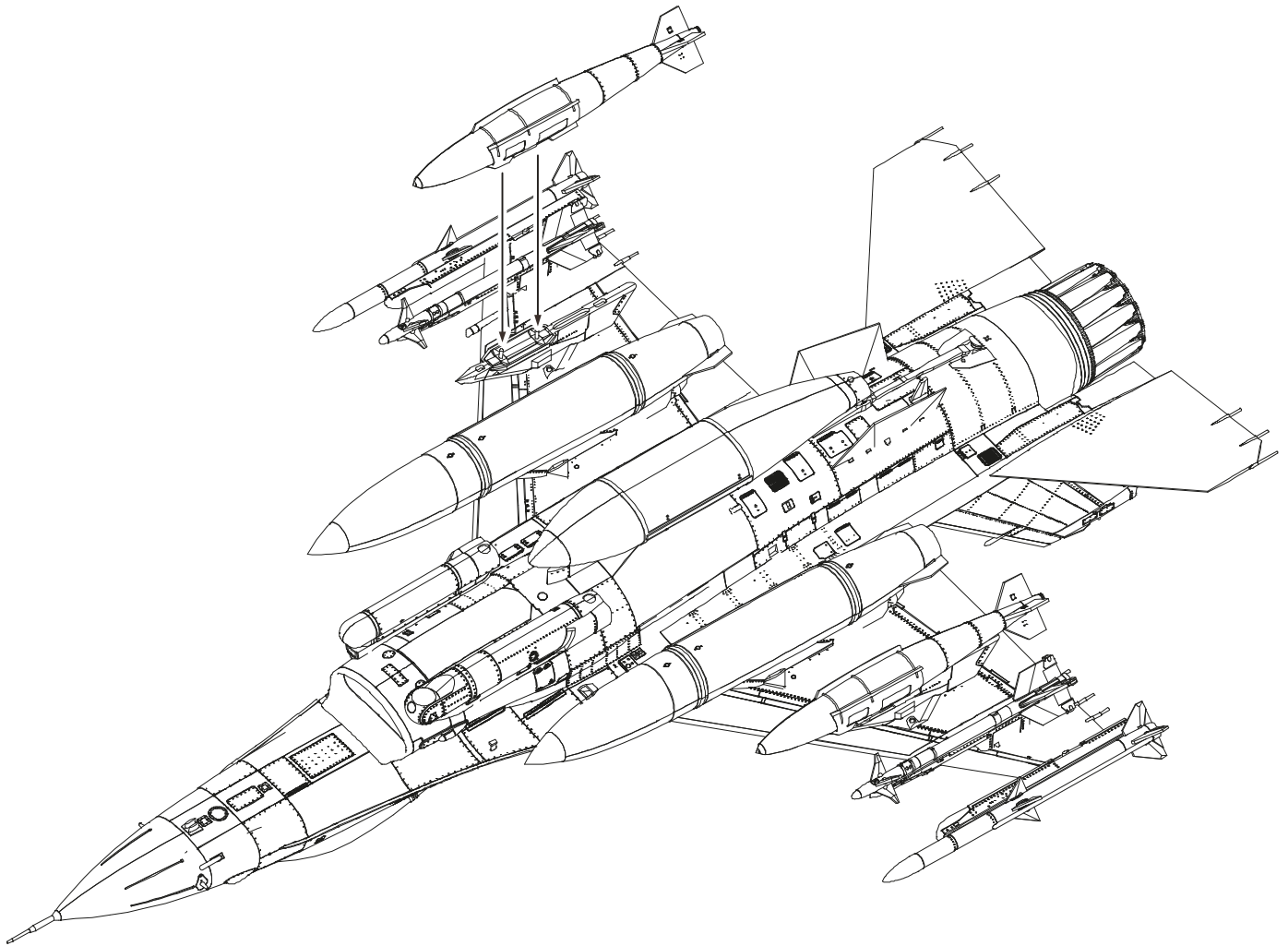
EXTERNAL STORES



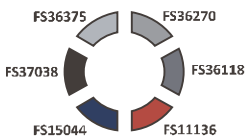
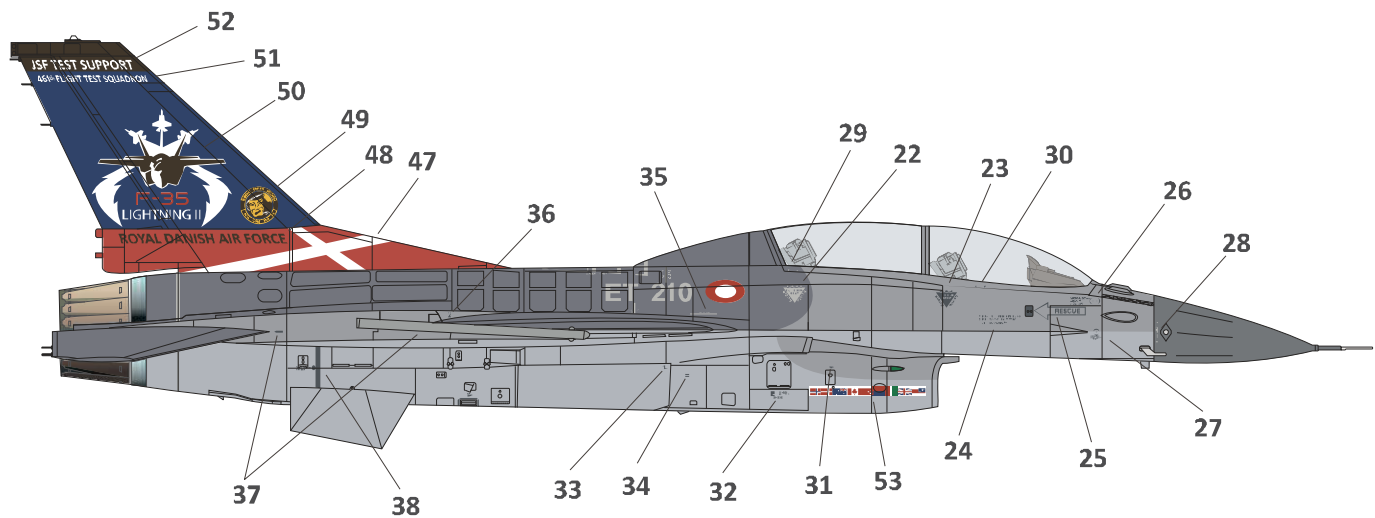
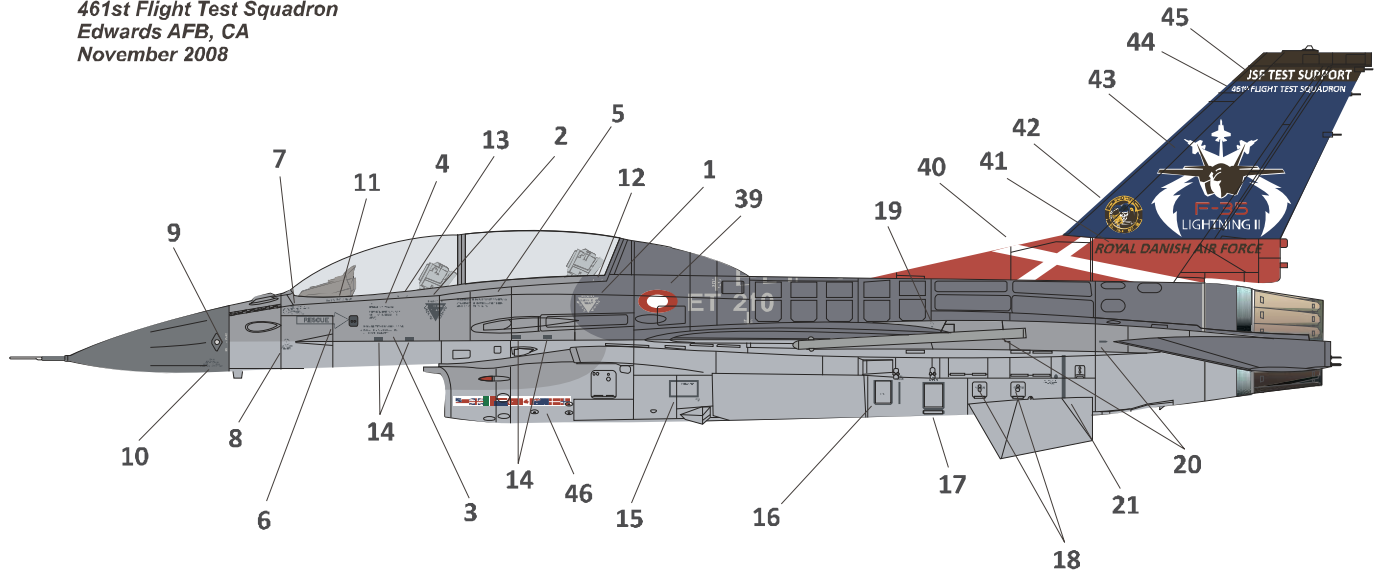
Station No. Weapons	9	8	7	6	5R	5	5L	4	3	2	1
370gal. Fuel tank				●				●			
300gal. Fuel tank						●					



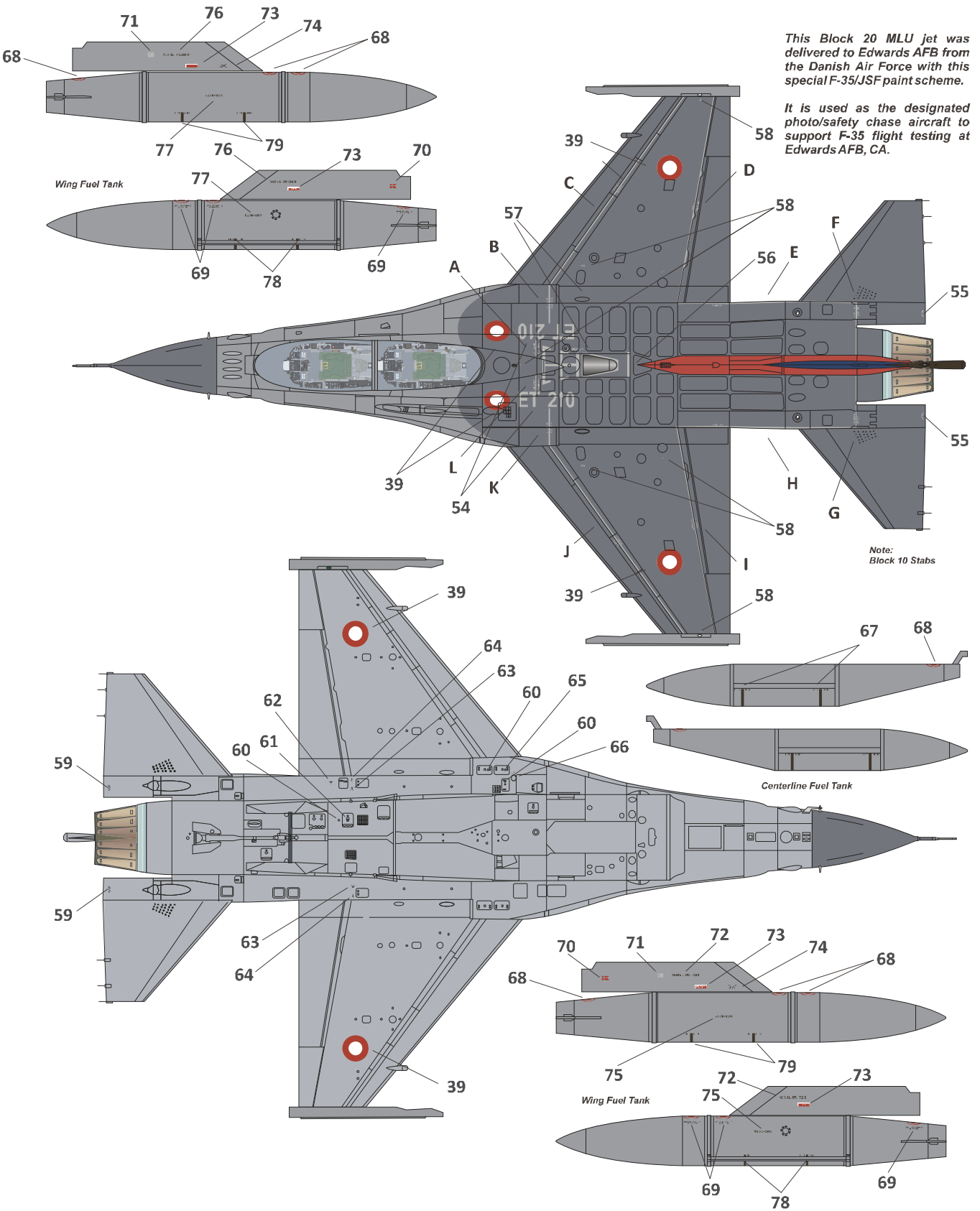
WEAPON LOADING ILLUSTRATION



F-16B Block 20 MLU
 461st Flight Test Squadron
 Edwards AFB, CA
 November 2008



FS Color	AK	Hataka	Mr. Color	Mr. Paint
FS36375	RC252	HTK-C037	C308	MRP-038
FS36270	RC249	HTK-C054	C306	MRP-039
FS36118	RC244	HTK-C031	C305	MRP-040
FS11136	RC005	HTK-C219	C327	MRP-299
FS15044	RC010	HTK-C037	C326	MRP-300
FS37038	RC001	HTK-C100	C33	MRP-005



This Block 20 MLU jet was delivered to Edwards AFB from the Danish Air Force with this special F-35/JSF paint scheme.

It is used as the designated photo/safety chase aircraft to support F-35 flight testing at Edwards AFB, CA.

Note:
Block 10 Stabs