



PD DECALS

1/48 SCALE

SPAD XIII (part 2)

48 - 009

IMPORTANT : PLEASE READ THE DIRECTIONS FIRST

DIRECTIONS

Study the subject you wish to model closely, and be sure you have properly identified the decals you will require. Please note that this sheet covers both Bleriot and Kellner built aircraft, which were finished in subtly different camouflage schemes.

Tweezers and a clean paint brush can be useful tools when applying decals. Decal setting solutions may also be used with this product, but their manufacturers directions must also be observed. Better results can be achieved by applying decals to a clean gloss surface.

It is recommended that these decals be applied one at a time. Cut out the decal you wish to apply, dip into water, and put aside. When the decal slides freely on its backing paper, it is ready for application. The decal should be slid directly onto the model; wetting the area receiving the decal with water or setting solution will assist final positioning of the decal.

KITS AND PARTS

Dragon - SPAD XIII

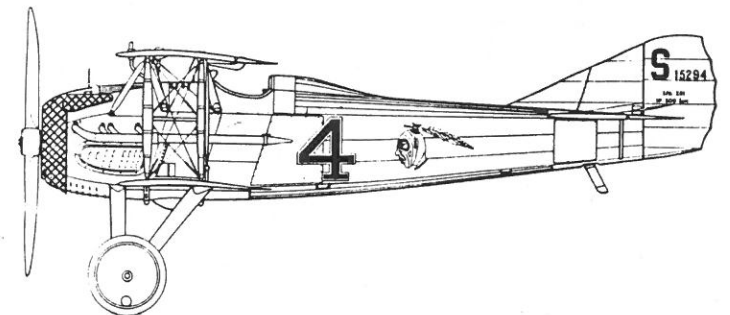
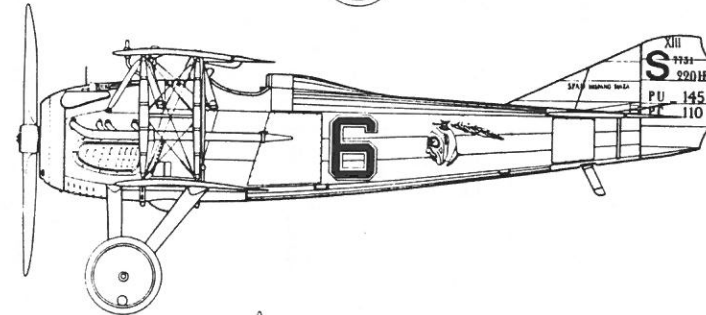
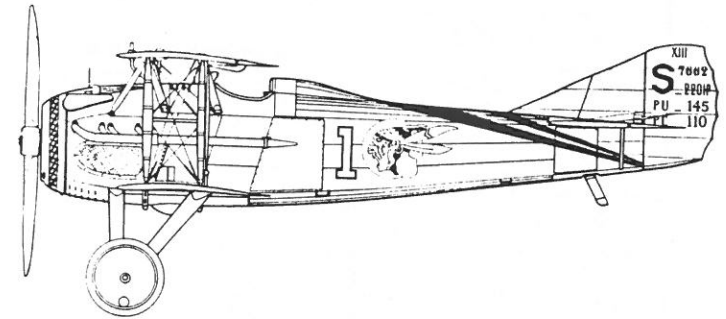
REFERENCES

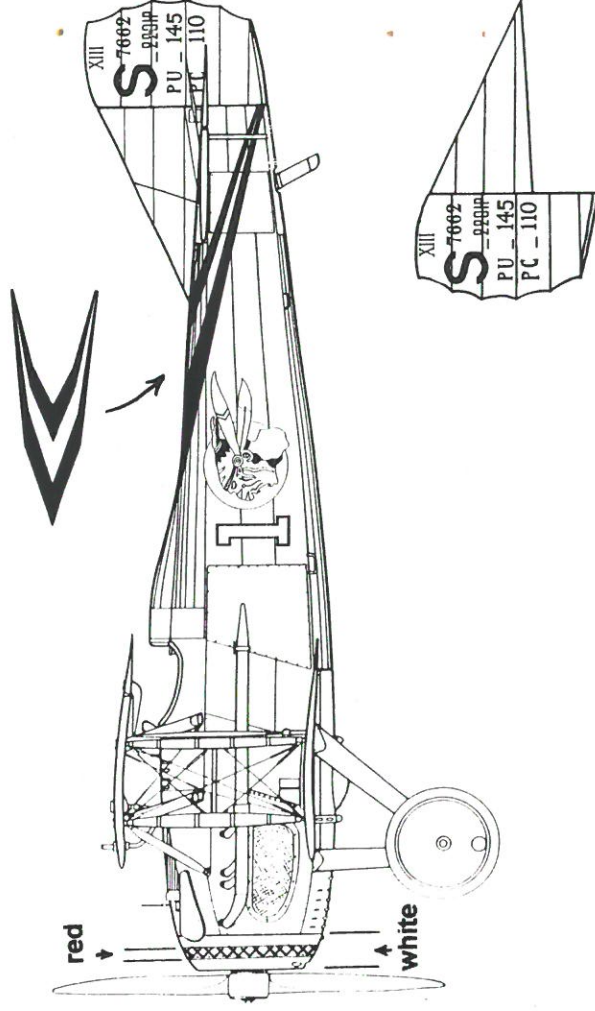
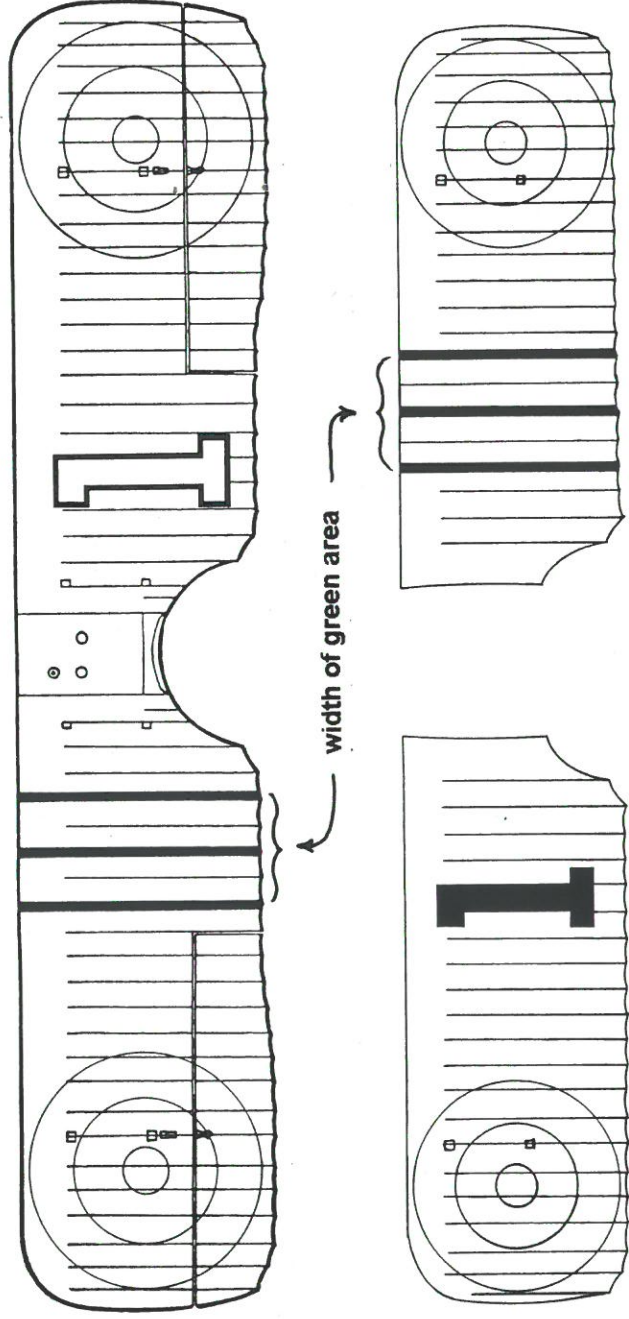
- 1) "SPAD 13.C1 - Windsock DataFile 32", by J M Bruce, Albatros Publications, Hertfordshire, England, 1992
- 2) "SPAD FIGHTERS In Action", by J C Connors, Squadron Signal Publications, Texas, 1989
- 3) "Windsock International", Vol.6, No.5, Sept/Oct 1990, Albatros Publications, Hertfordshire,
- 4) "THE SPAD XIII C.1 - Profile No.17", by C F Andrews, Profile Publications, England, 1971
- 5) "Project Butterfly - The standard French Camouflage System of 1918", by A D Toelle, H D Hastings and B F Hardesty, parts 2 and 3, published in "Cross and Cockade Journal", Vol 13, No 2, Summer, 1972 and Vol 13, No 4, Winter, 1972

The above references are referred to in the instructions by their number.

NOTE : Americal Gryphon produce decal sheets with USAS roundels which may be useful in conjunction with these decals.

The kind assistance of Mr. R. Guest in the production of these decals was most appreciated.

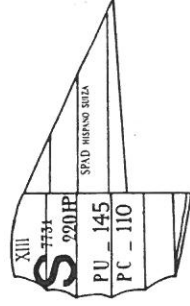
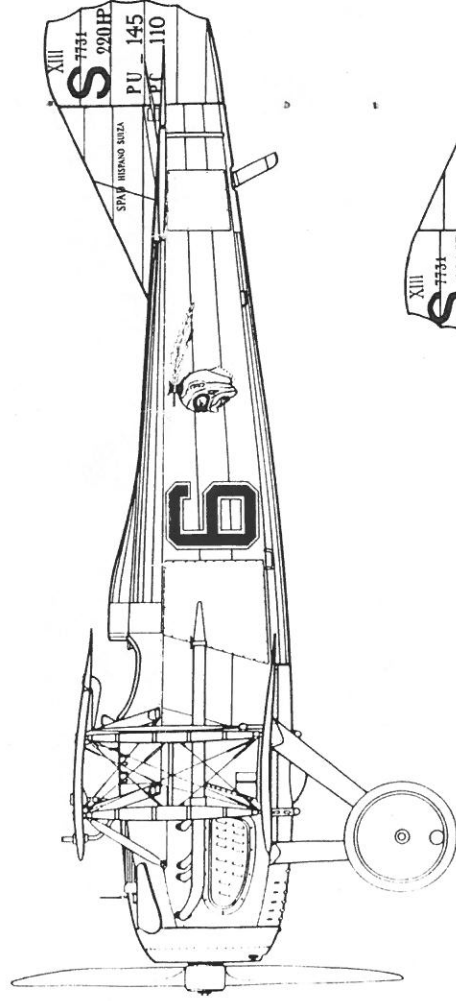
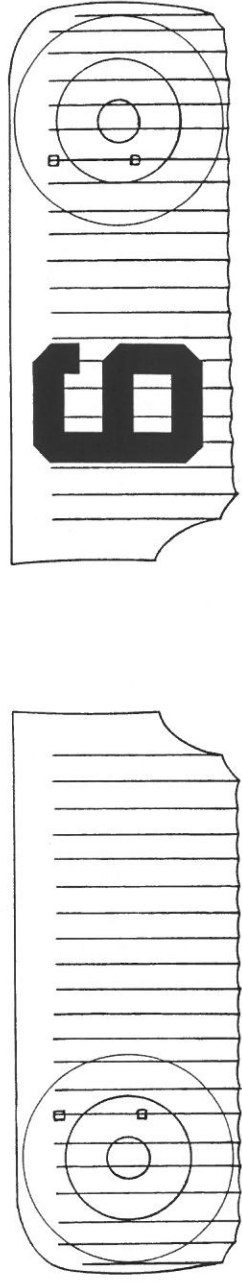
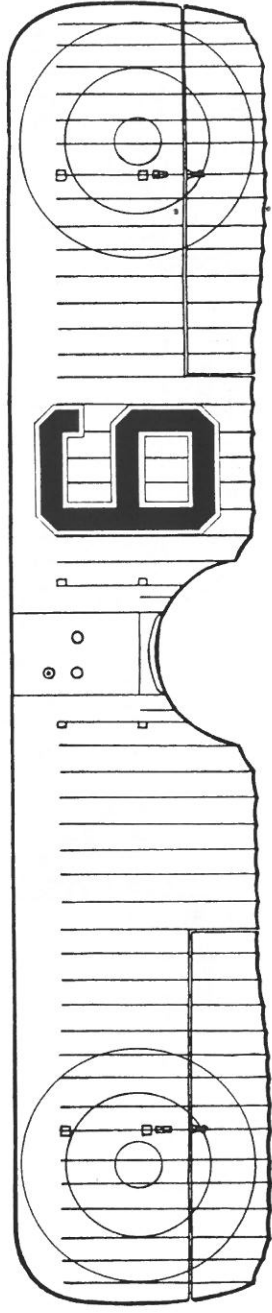




1) SPAD XIII, S7662, Maj John Huffer, 93rd Aero Sqn, 1918

This aircraft was borrowed by 2/Lt O J Gude on October 22; it was subsequently captured when Gude landed at the aerodrome of Jasta 65 at Mars-la-Tour and became a POW. The machine was equipped with a bomb rack under the fuselage when it was captured. This was a Kellner built machine, and was camouflaged according to their pattern. The cowling ring was White/Red/White in equal proportions. Struts are polished wood. The undercarriage and wheel discs are in the undersurface colour of Light Grey. The tricolour band wraps over the fuselage top, just in front of the fin. The Red/White "1" for the fuselage and upper wing is in two parts. First apply the White centre, then the Red outline over the top. The "1" underneath the lower wing was Black. A Green band with Red stripes was probably applied to the top wing upper surface, and possibly the bottom wing lower surface. The red stripes have been provided in decal form for both wings. First paint the Green area, then apply the decal with the Red stripes. Gunze Sangyo Park Green (no.28) is a very good match for the Green required, and is available in acrylic and enamel. When the decal has completely dried, any excess material can be removed from the "scallop" of the wing trailing edge by CAREFUL use of a very light grade wettable sanding paper. Rudder should be painted with Red/White/Blue stripes (Red forward) before applying rudder decal. The Indian faces forward both sides.

References : No 1 pp. 34-36, outside rear cover

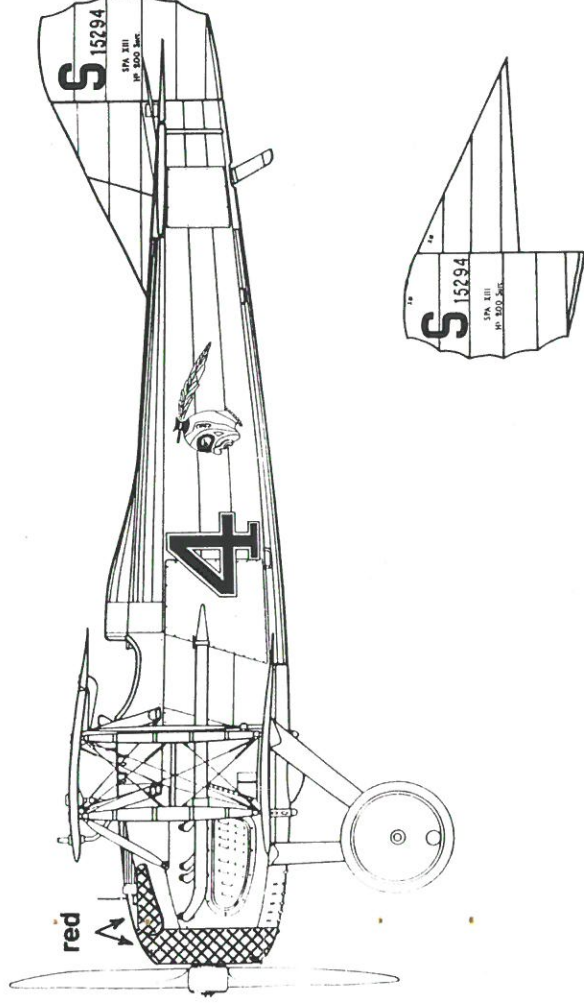
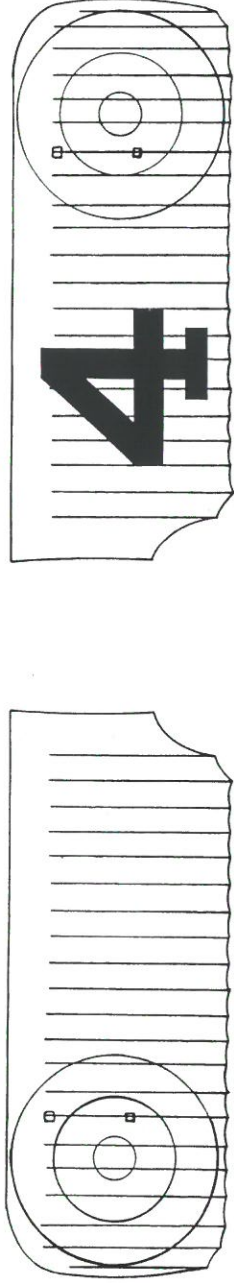
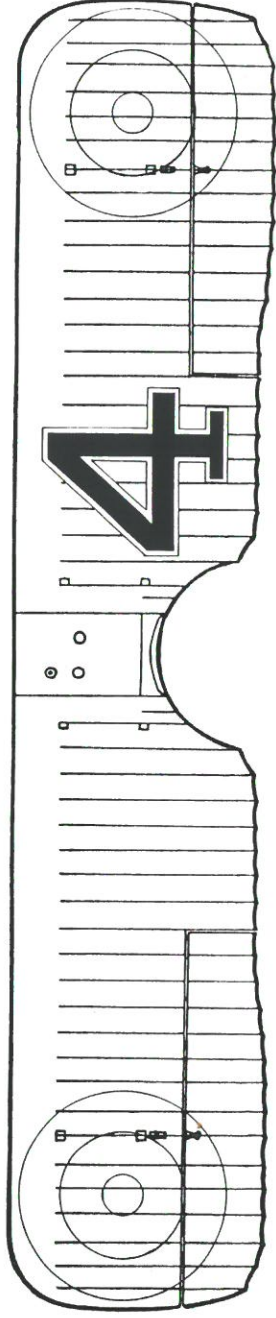


2) SPAD XIII, S7731, 2nd Lt John Lee, 213th Aero Sqn, 1918

While serving with the 213th, John Lee claimed a Fokker out-of-control from a dog fight on the 5 November 1918.

This was a Kellner built machine, camouflaged according to their pattern. Struts are natural wood. The undercarriage and wheel discs are finished in the undersurface colour, in this case Light Grey. The Black/White "6" for the fuselage and upper wing has been prepared in two parts. First apply the White "6", then the thinner Black inner part over the top to leave an even border. The "6" beneath the lower wing was in Black only (the thicker Black "6" on the decal sheet). The Indian head faces forward on both sides. Blue/White/Red stripes (Red forward) should be applied to the rudder before applying the rudder decal. The fin also carries the wording "SPAD Hispano Suiza"

References : No. 1 p. 22 ; No. 4 p. 9 ;

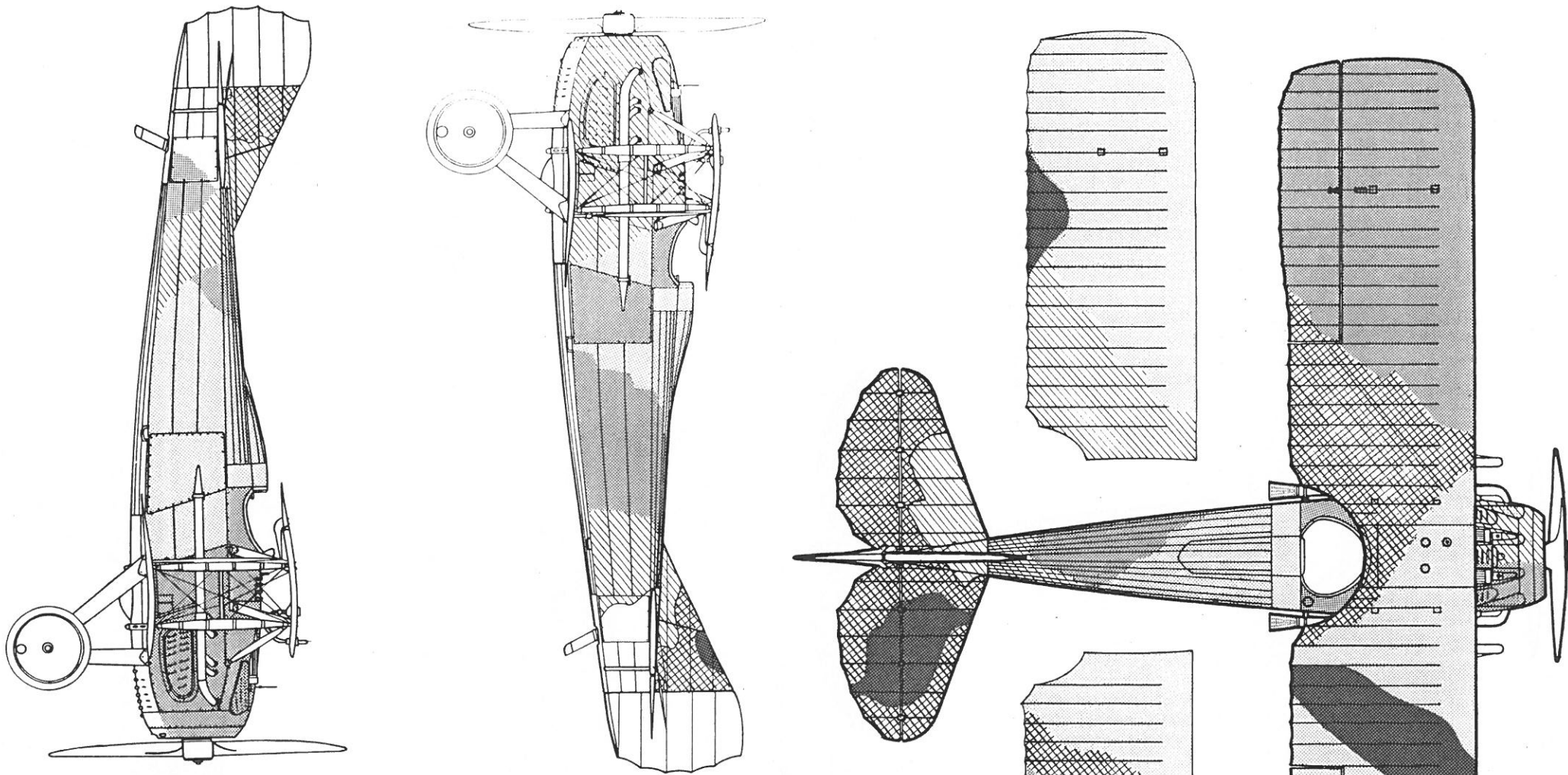


3) SPAD XIII, S15294, 1st Lt Alvin Treadwell, 213th Aero Sqn, 1918



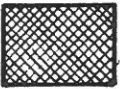
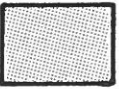
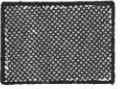
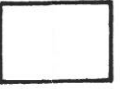
Alvin Treadwell first served with Spa 154, sharing in a victory before transferring to the 213th Aero Squadron. He achieved three victories, a Fokker on the 28 September, a Hannover on the 29 October and a balloon on the 3 November. He was shot down and killed on the 6 November 1918, just five days before the Armistice.

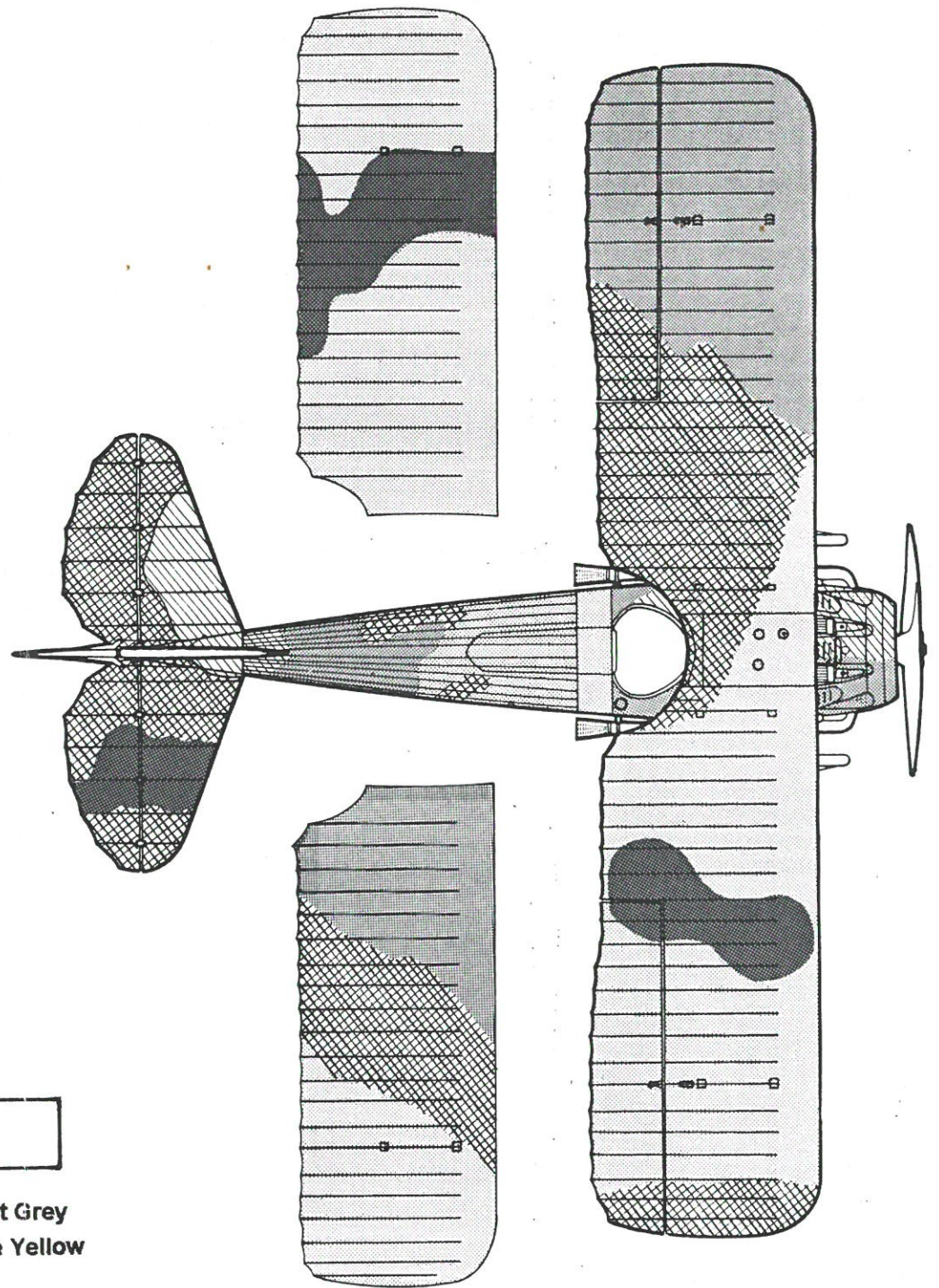
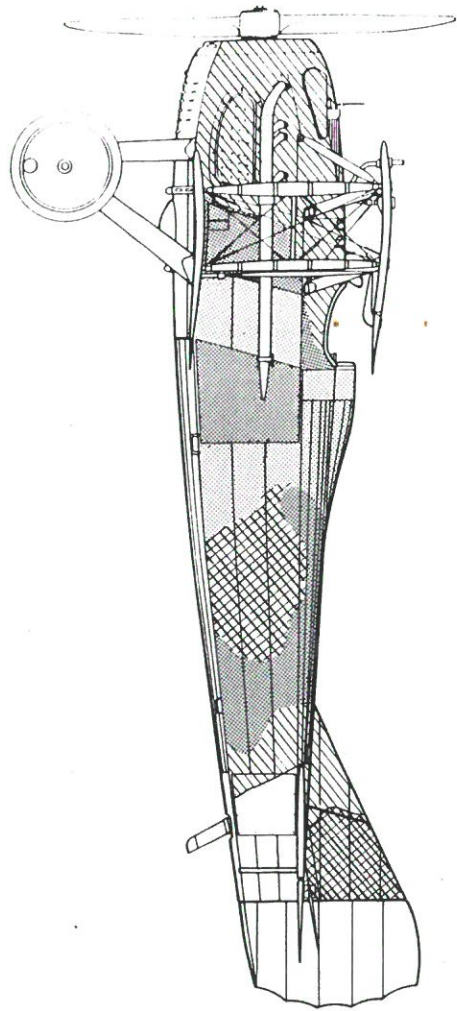
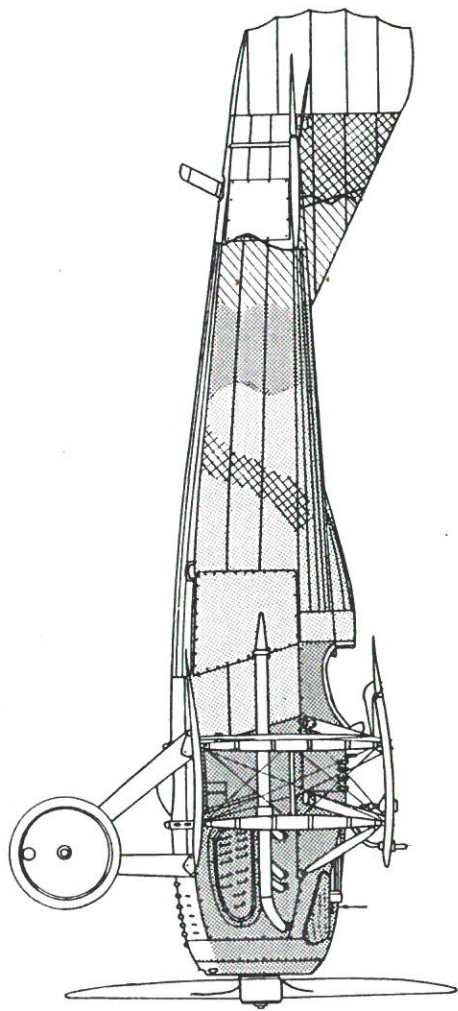
This was a Bleriot built machine, and was camouflaged according to their pattern. It had a Red coving ring and cylinder head covers. The Black/White number "4" for the fuselage and upper wing has been prepared in two parts. First apply the White "4", then the thinner Black inner part to leave an even border. The "4" beneath the lower wing was in Black only (the thicker Black "4" on the decal sheet). Struts are painted a dark colour, either Brown or Dark Green. The undercarriage and wheel discs are painted in the undersurface colour of Pale Yellow. The Indian head faces forward on both sides. Blue/White/Red stripes (Blue forward) should be applied to the rudder before applying rudder decal. A small "XIII" appeared on the upper right side of the fin and the rudder. Note that the roundels on both wings were the same size.

References : No. 3 pp. 14-17 .



Typical Camouflage Scheme - KELLNER

- | | | | | | |
|---|---|---|---|--|---|
|  |  |  |  |  |  |
| Dark Brown | Dark Green | Light Brown | Light Green | Black | Light Grey
or Pale Yellow |



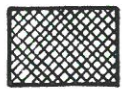
Typical Camouflage Scheme - BLERIOT



Dark Brown



Dark Green



Light Brown



Light Green



Black



Light Grey
or Pale Yellow