

Hawker Tempest V



The Hawker Tempest was an improved design of the RAF Typhoon but after a nearly a complete redesign the airplane was re-designated Hawker Tempest. The Tempest proved to be a fast and capable fighter that distinguished itself in late WWII as one of the few fighters capable of intercepting and V-1 flying bomb and challenging the new German ME-262 jet fighter.

This kit contains markings for the following:

RAF, no. 150 Wing, 1944

RAF, No. 80 Sqn, 1947

Minicraft Models, 1501 Commerce Drive, Elgin IL 60123 USA

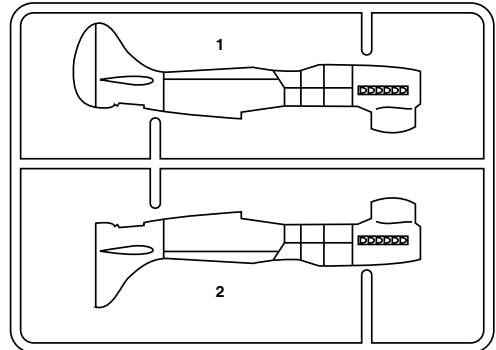
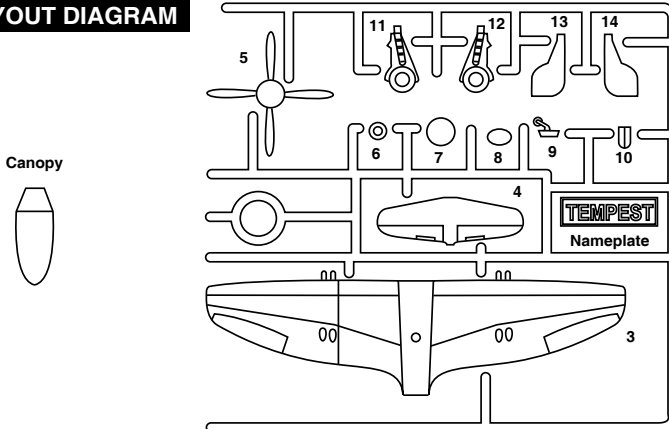
www.minicraftmodels.com

Printed in China

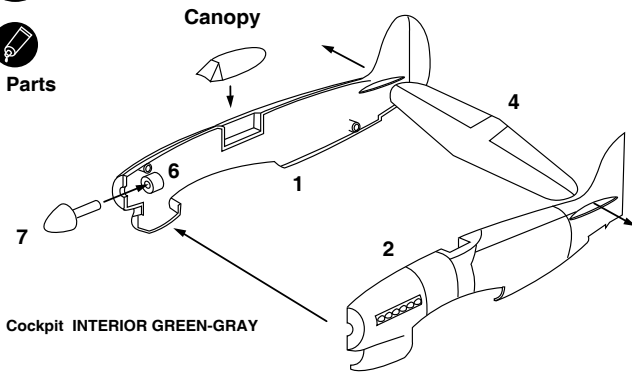
14646

Your MINICRAFT Tempest may be assembled with various options, such as 'in-flight' features as retracted landing gear and 'spinning' propellers. Parts are also provided for a 'stationary' or 'ground' version with extended landing gear. Please review the assembly steps to become familiar with the parts before beginning

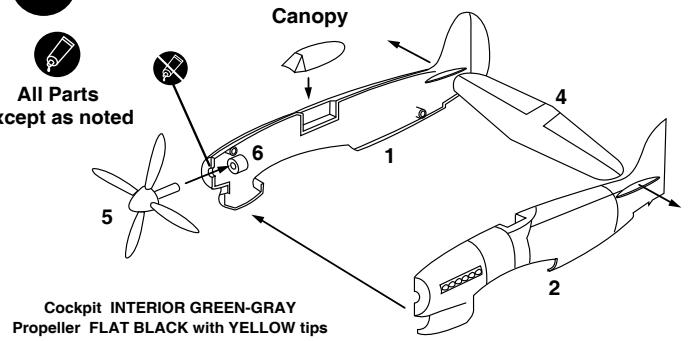
PARTS LAYOUT DIAGRAM



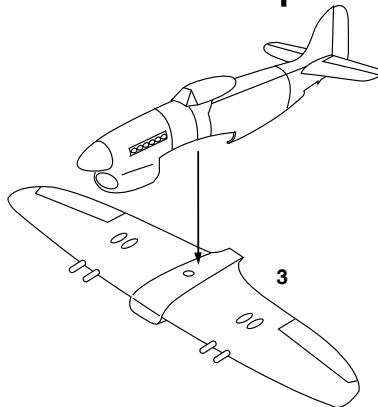
1 IN-FLIGHT VERSION



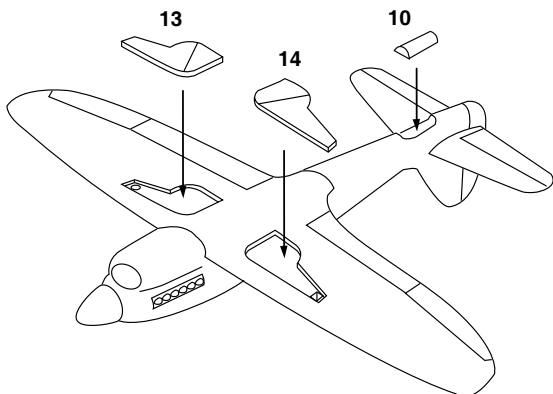
2 STATIONARY VERSION



3

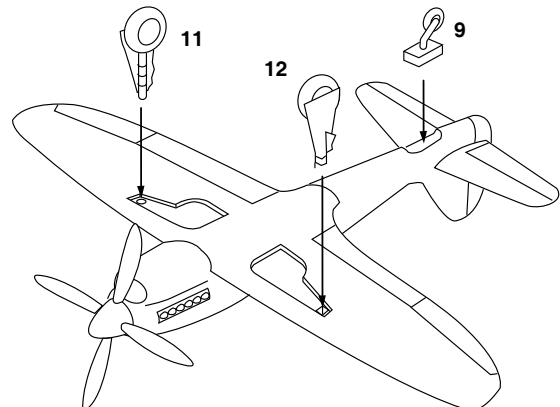


4 IN-FLIGHT VERSION

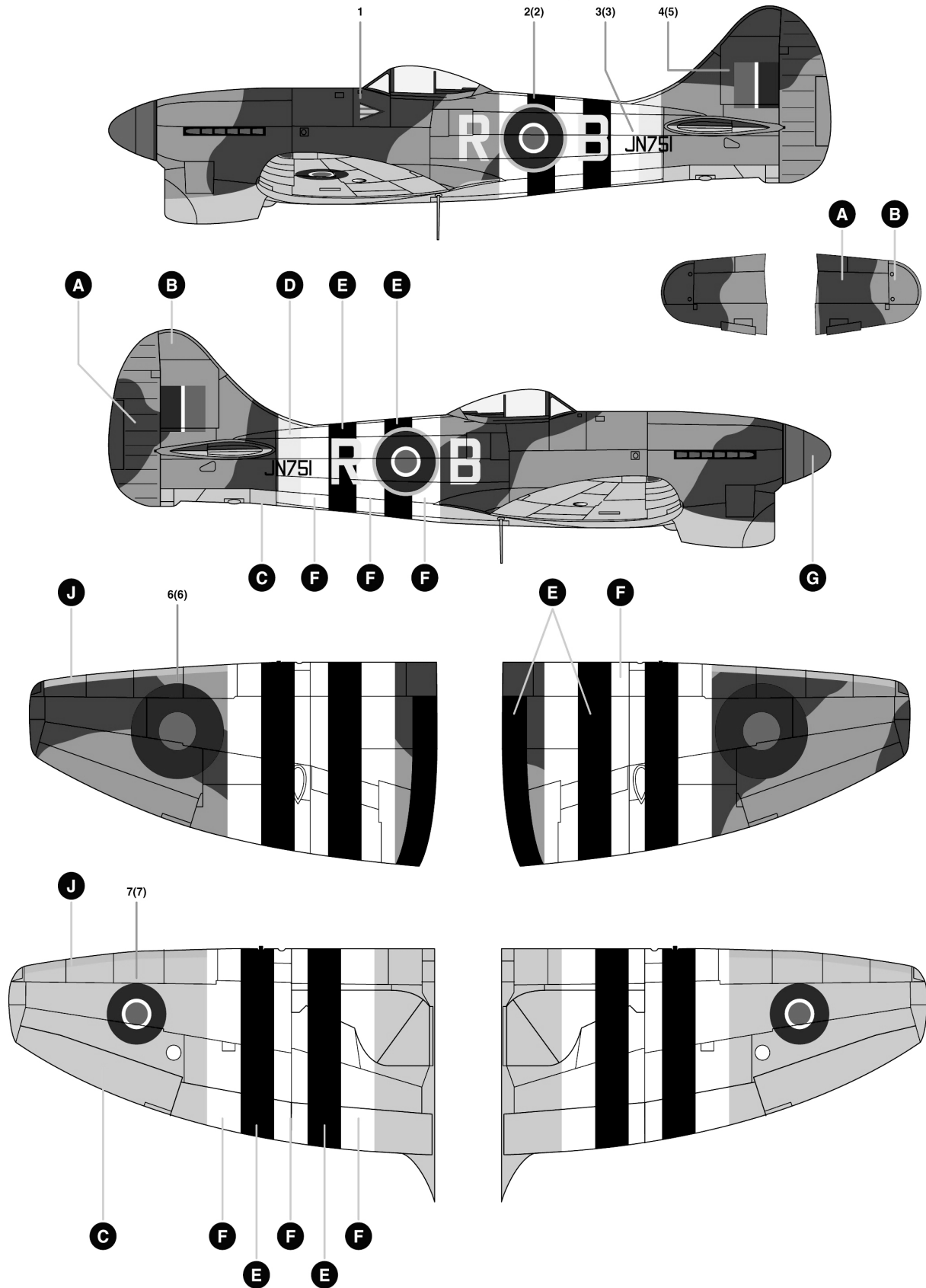


5 STATIONARY VERSION

Wheel wells and doors INTERIOR GREEN-GRAY
 Tires FLAT BLACK-GRAY
 Hubs ALUMINUM



RAF, No. 150 Wing, 1944

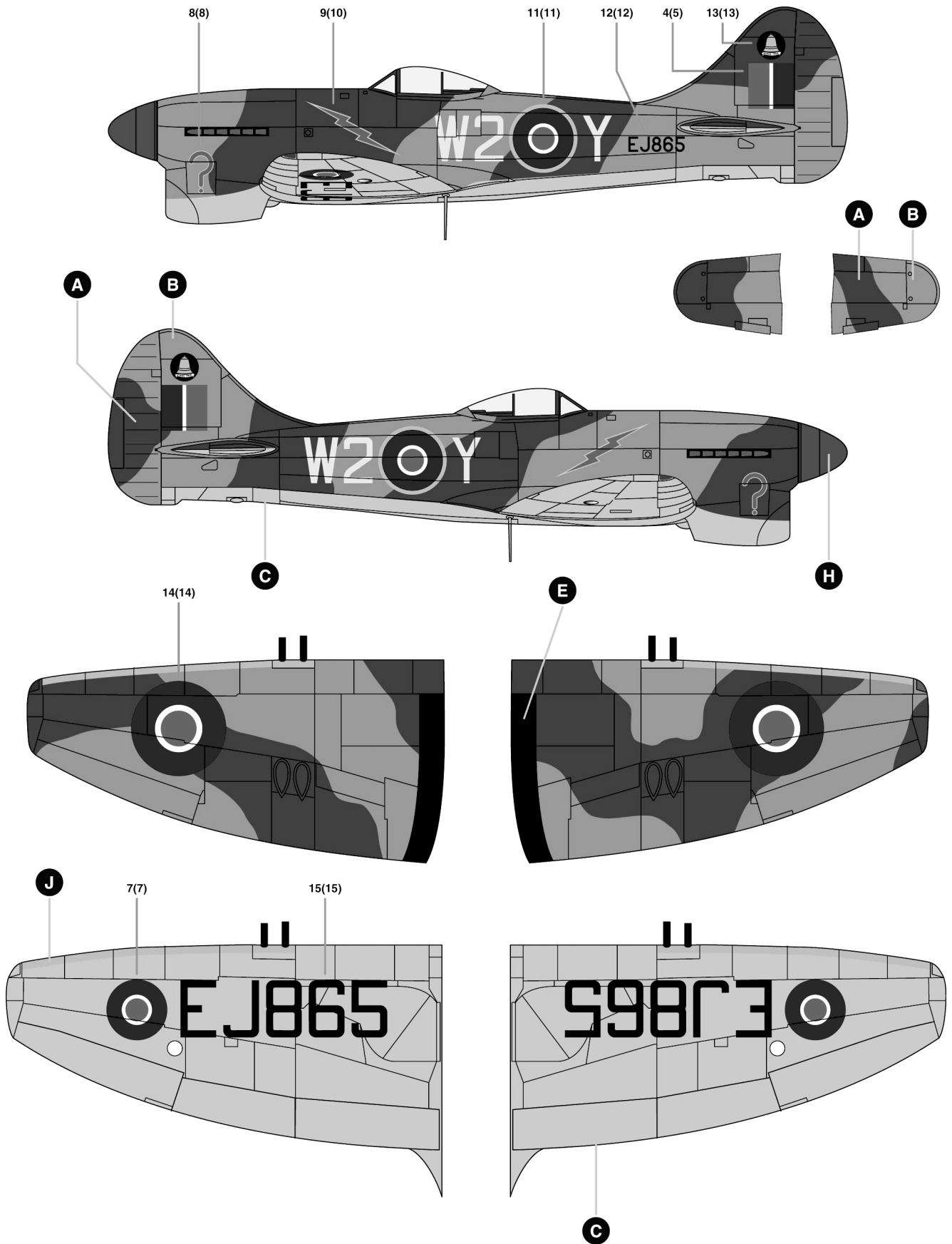


PAINTS

- A RAF Dark Green (ModelMaster 2060, Acryl 4849)
- B RAF Ocean Grey (ModelMaster 2057, Acryl 4746)
- C RAF Medium Sea Grey (ModelMaster 2058, Acryl 4762)
- D RAF Sky Type S (ModelMaster 2049, Acryl 4840)
- E Black (ModelMaster 1749, Acryl 4768)

- F White (ModelMaster 1745, Acryl 4696)
- G Red (ModelMaster 1705, Acryl 4714)
- H Blue (ModelMaster 1719, Acryl 4742)
- J Yellow (ModelMaster 1708, Acryl 4721)

RAF, No. 80 Sqn, 1947



Your Minicraft model includes high-quality waterslide decals. These decals adhere best to a glossy surface; and it is recommended that you apply a clear gloss coat over your painted model.

Use a sharp scissors or knife to cut individual decals from the carrier sheet. Do not cut into the clear film surrounding the individual decals.

* It is recommended that you apply one decal at a time.

* Place the decal section in warm water, when first inserted in the water your decal will curl, after approximately ten seconds the decal will uncurl. Remove from water and lay on a paper towel. After approximately 10 - 20 seconds the decal will slide freely from the backing paper. Use a small brush to help slide the decal from the backing paper and into position on the model. Carefully blot excess water from the decal, using care not to move the decal or tear it.

* If you choose to use a setting solution, apply a thin coat over the decal following the manufacturer's instruction.

* Allow the decal to dry overnight. Wash any adhesive residue off the model with a small amount of clean water and dry thoroughly.

* Apply clear gloss, matte or flat coat to seal decals following the instructions from the manufacturer.



Legends in the making™

Visit our Website-
www.minicraftmodels.com

Minicraft Models
1501 Commerce Drive
Elgin, IL 60123

Phone: 847-429-9676