

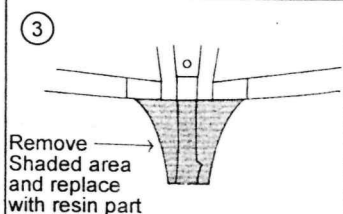
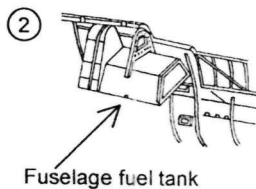
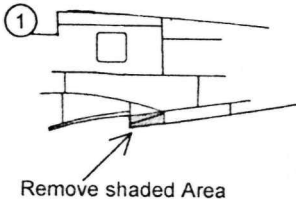
This accessory is cast from resin and is meant for use on the on the Tamiya Spitfire Mk1A.

Parts can be cleaned with a sharp knife or wet and dry paper.

Airwaves are designed, manufactured and distributed by,

H.G.Hannant Ltd, Harbour Road, Oulton Broad, Lowestoft, Suffolk, NR32 3LZ,

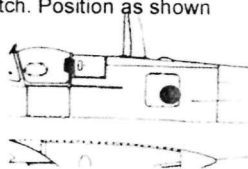
Tel 01502 517444, Fax 01502 500521



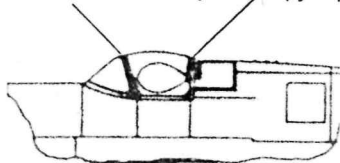
Drill hole to size. Fit camera from inside with arrow on back facing forward to avoid fouling fuel tank



Fit bulged camera door direct onto radio hatch. Position as shown



use center section only of canopy supplied



Use the windscreen from kit

Replace radio part with camera control box.
Use new oil cooler in place of kit part.
Retain guns and gun access panels on wings.