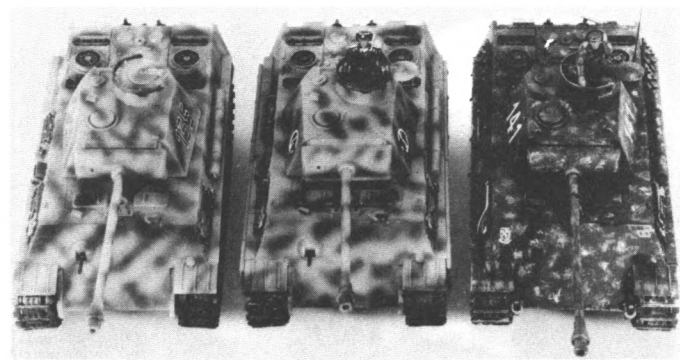
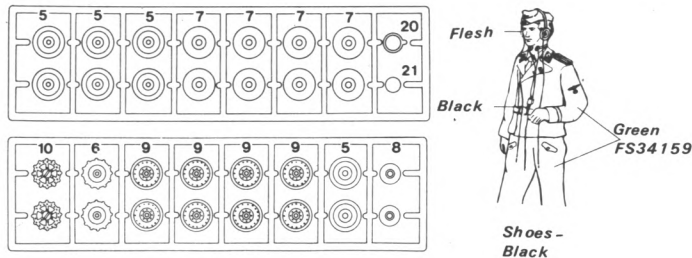
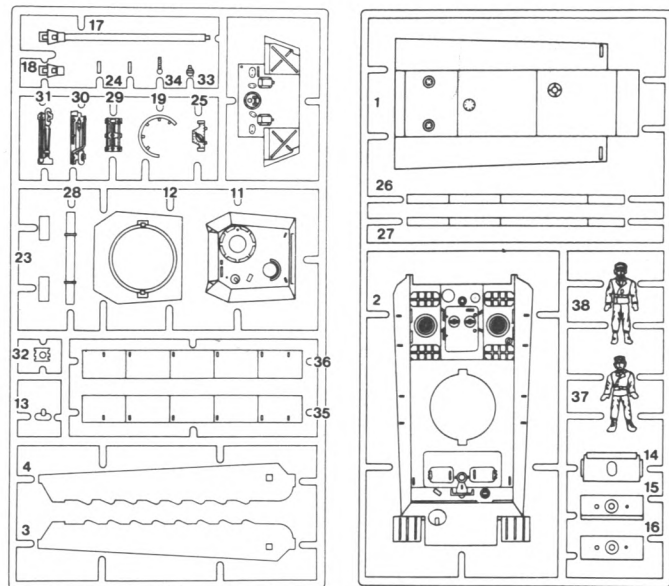
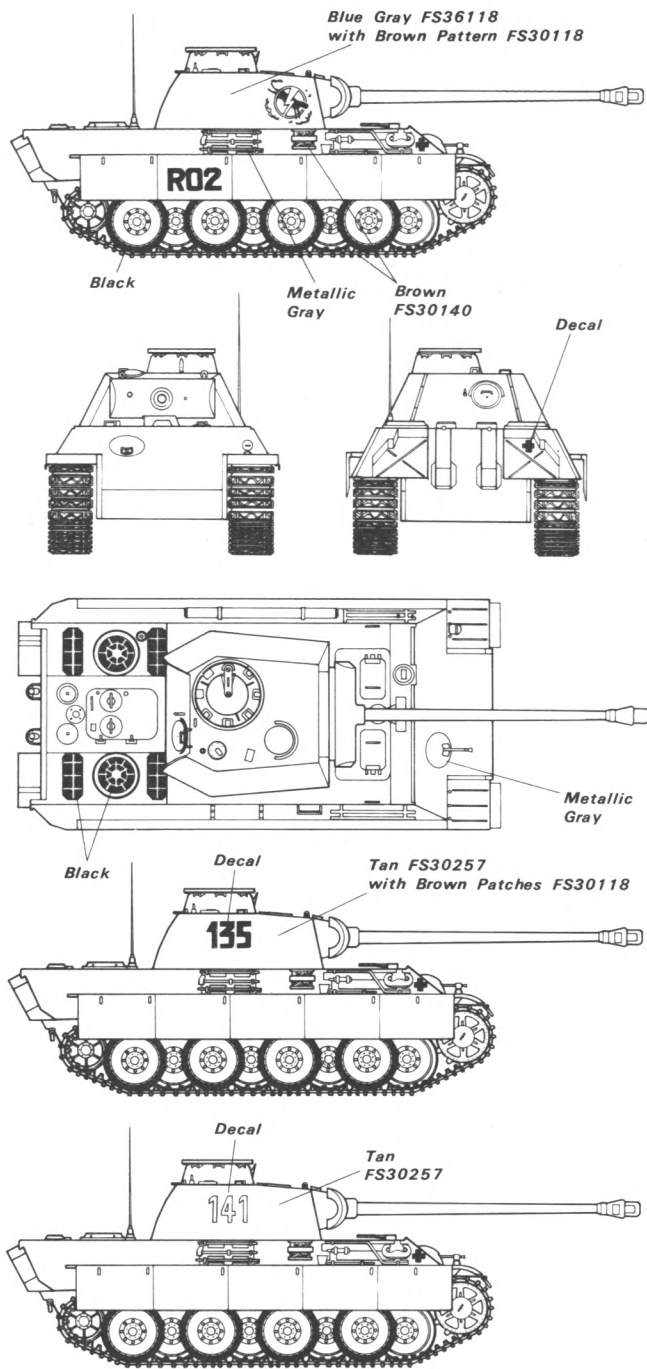


PART DRAWINGS AND PART NUMBERS



PANTHER G



HISTORY

At the outbreak of the Second World War, German tanks were superior to those of any other combatant. This supremacy was virtually unchallenged until the introduction of the revolutionary Russian T-34 Stalin tank in 1941. The Russian tank displayed three new features which gave it a clear advantage over the Panzerkampfwagens: a long-barreled gun with greater accuracy, large road wheels which provided a smoother ride and a more stable gun platform, and sloped armor skin to deflect incoming shells.

The original design for the PZKW V was begun in 1937 but at that time there was no need to develop the tank with any degree of urgency. With the appearance of the T-34, however, and in the face of mounting losses before the Russian tank, the PZKW V was rushed into production. Called Panther, the new German vehicle included the advanced features of the Russian tank. Weighing forty-five and a half tons the Panther was armed with a long-barreled L/70 cannon. The first of these tanks went into service in 1942 and production was increased to a maximum of 600 units per month.

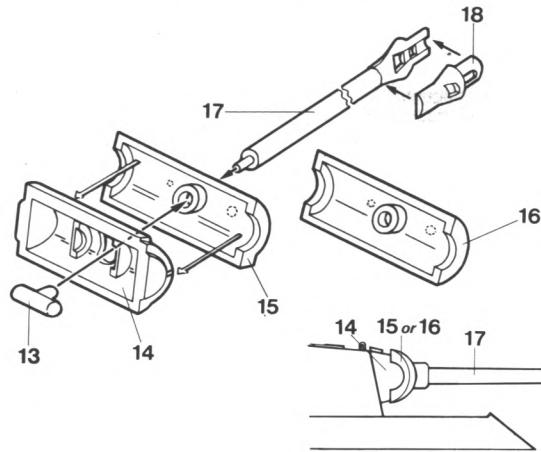
HASEGAWA SEISAKUSHO CO.,LTD

1193-2 Yagusu, Yaizu 425, Shizuoka, Japan

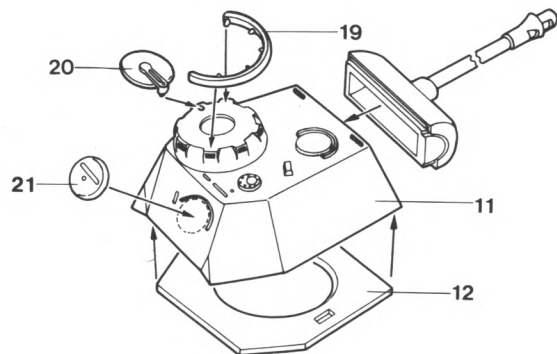
BEFORE ASSEMBLING YOUR KIT

Read these instructions carefully before assembling your model and check the exact fit of the parts before cementing. Clean off excess plastic, if any with a sharp knife or a file. Since many tiny parts are included, check them with the assembly drawing before assembling. Do not tear off parts from the stem, but cut them off carefully with a knife or clippers. Do not cut off all of the parts at the beginning, but cut each part to be assembled, one by one, to assure each part being properly identified. Do not use too much cement since surplus adhesive can spoil the finish.

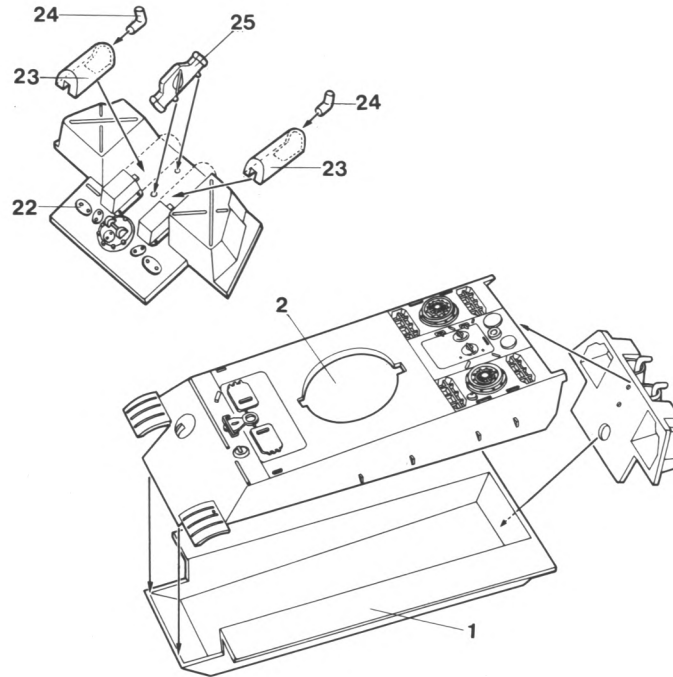
- 1** Cement 18 to 17. Select mantlet front (15 or 16) you wish to use and cement 17 in place as shown. Now place, do not cement, mantlet front onto 14 and cement retainer 13 to locator in mantlet front.



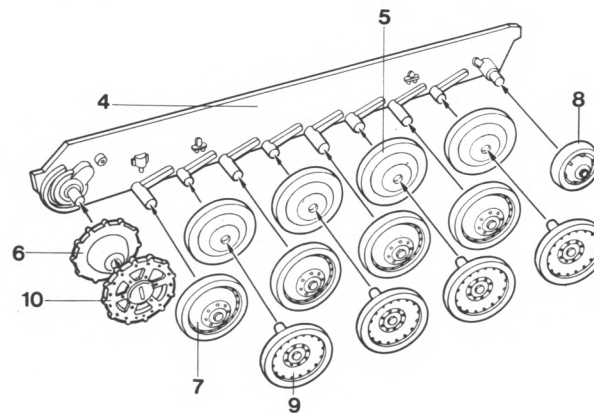
- 2** Cement assembled mantlet to 11 as shown. Cement 11 to 12. Cement 21 to rear of 11 and cement 19 and 20 in place on hatch.



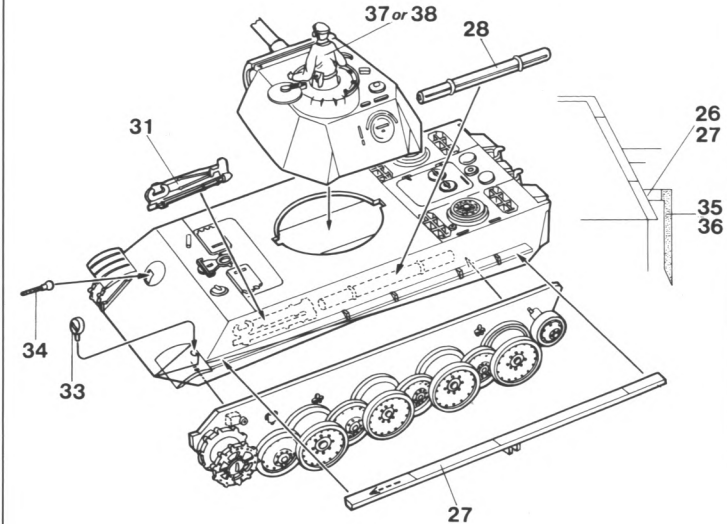
- 3** Cement two 23 to 22 then one 24 to each 23. Cement 1 and 2 together then cement 22 to rear of assembly.



- 4** Cement one number 8 wheel to the rearmost axle on part 4 then cement one number 5 wheel to each short axle. Now cement one number 7 wheel to each long axle then cement one number 9 wheel to each of the already mounted number 5 wheels as shown. Cement 6 and 10 together then cement to 4. Repeat for opposite side using part 3.



- 5** Cement 3 and 4 with wheels to hull sides. Cement 26 and 27 to hull above wheels. Note direction of arrow in drawing. Cement 28 and 31 to hull side and 33 and 34 to hull front. Cement crew figure, 37 or 38, into hatch then place turret onto hull by lining up the tabs in the notches then turning the turret to secure it.



- 6** Remove the flexible tracks from the runners. Place pins on one end through holes in opposite end. Using a heated blade melt the end of each pin to secure the track. Slide the track over the wheels as shown. Cement 35 and 36 in place. Refer to inset for proper placement. Note direction of Arrow. Cement 29, 30 and 32 in place on hull side. An antenna can be made from fine wire or stretched sprue and cemented to the hull as shown.

