

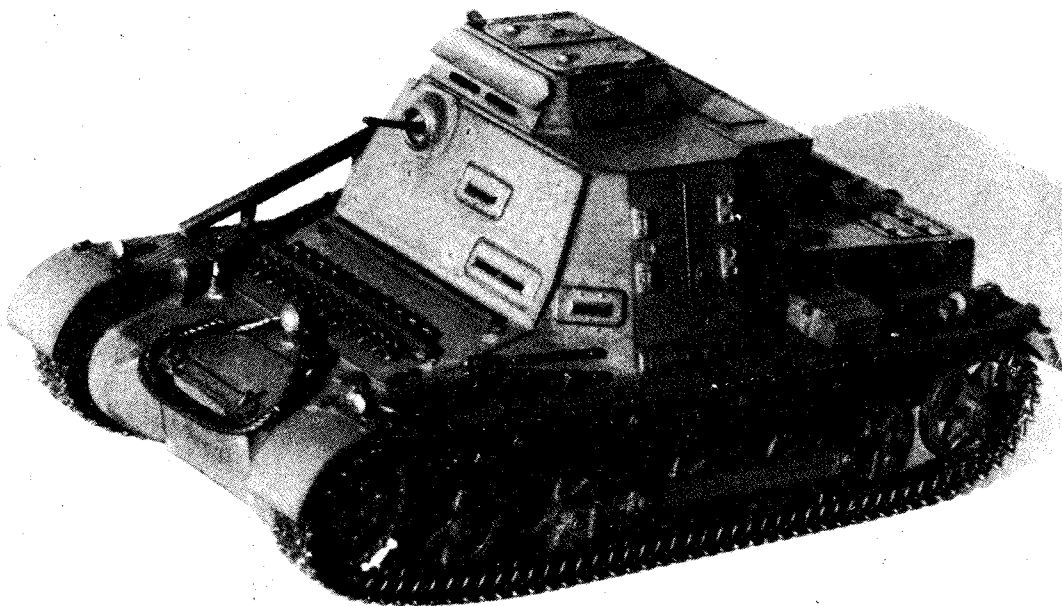
KIPzBfWg (Sd Kfz 265)

GERMAN LIGHT COMMAND TANK

Scale 1:35

Made in Russia

№3523



In the end of 1933 the Daimler-Benz factories designed and started production of a light command tank (Panzerbefehlswagen Klein) for command and control of large tank units. It was developed on the basis of the light machine-gun tank PzKpfw I. In 1935-1941 they manufactured 200 light command tanks, including 6 vehicles on the basis of PzKpfw I ausf A and 194 on the basis of PzKpfw I ausf B.

The new vehicle weighed 5.9 tons, carried one MG-13 or MG-34 machine-gun and was handled by a three man crew. Additionally the tank was equipped with powerful FU-5 or FU-6 transceivers. Its top speed reached 40 kph, while the range was 170 km.

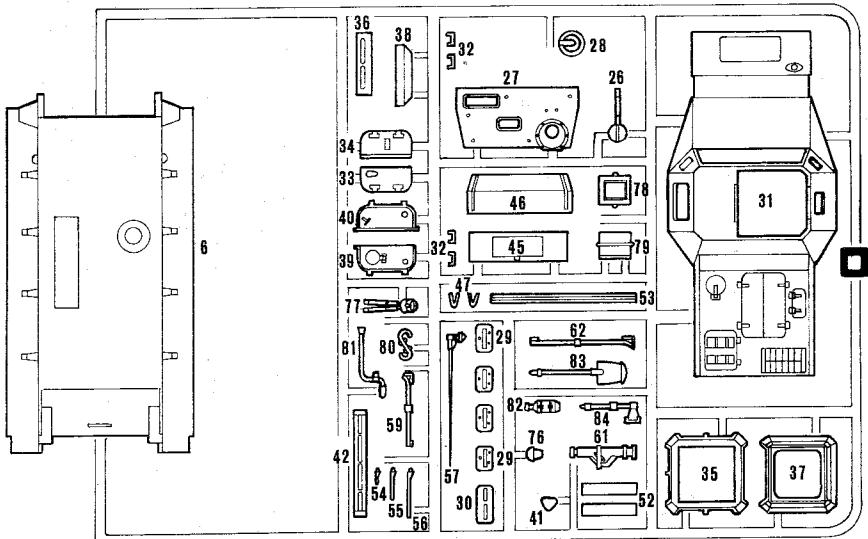
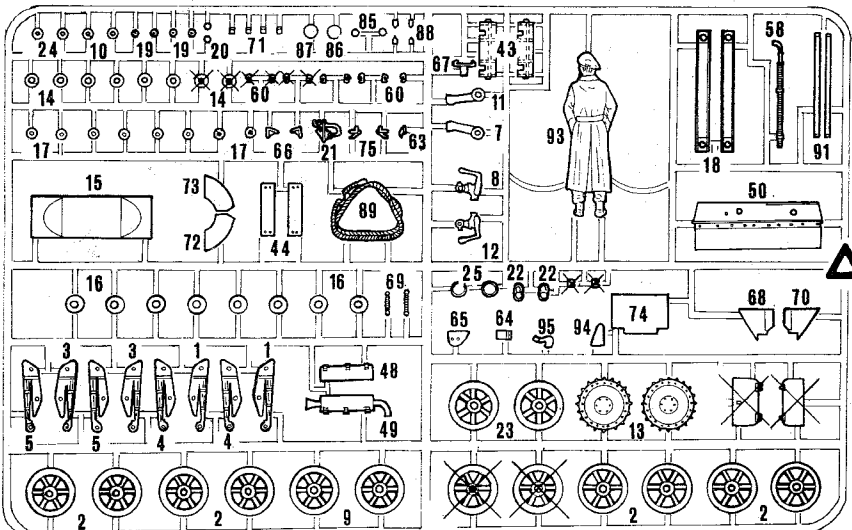
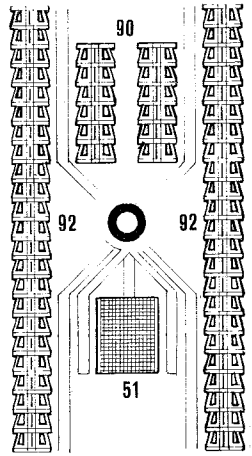
The light command tanks were introduced into the headquarters companies of armored regiments and tank battalions - 4 vehicles in each. 2 or 3 machines were sold to Spain and were operational within the Francoist 1st and 2nd tank battalions during the civil war in 1936-1939. On September 1, 1939 184 light command tanks crossed the Polish border. 5 of them were destroyed in fighting. Some hundred tanks of this type fought in action in France in summer of 1940 in ten armored divisions, and suffered more severe losses - up to 40 vehicles were killed.

Right before the aggression against the Soviet Union in June of 1941 Germany had 141 light command tanks. Several vehicles of this type were operational within two armored divisions of the German Africa Corps in Libya. These tanks suffered great losses in Soviet Union and Northern Africa and in 1942 their production was stopped.

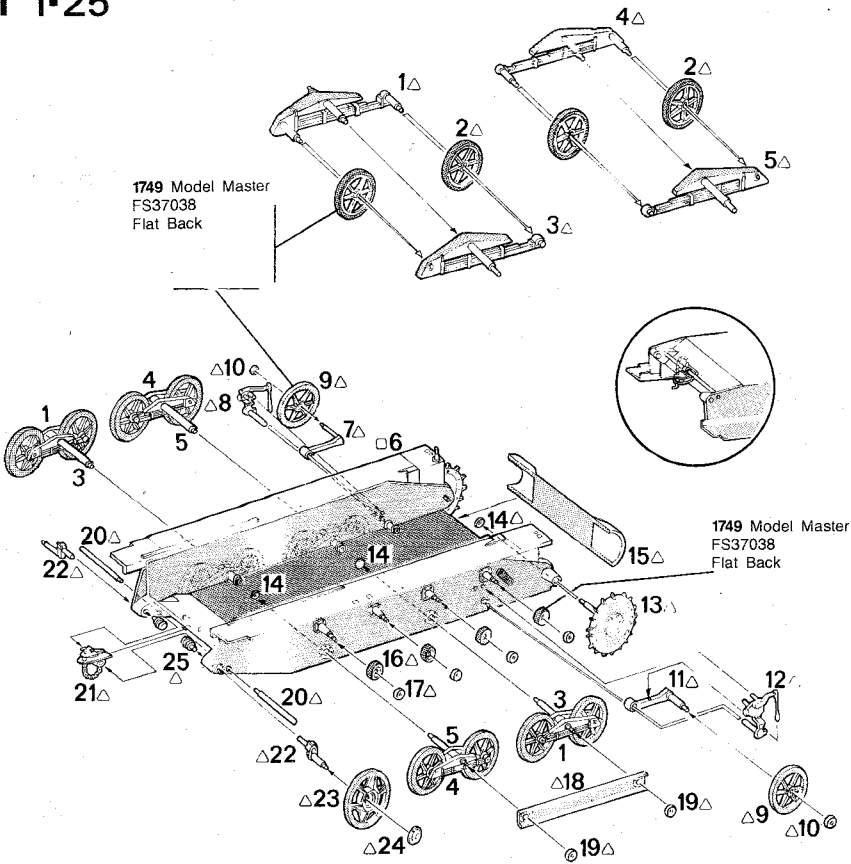
Before 1940 light command tanks like other armored vehicles had a camouflage paint. The dark-gray spots covered two-thirds of the surface while the rest was covered with dark-brown spots. Since 1940 all armor in Wehrmacht was painted dark-gray. For Africa in 1941 the base color was yellow-brown camouflaged with dark-green irregular spots and stripes. In Russia in winter 1941 tanks were camouflaged with whitewash and other available materials.

In 1939 German tanks carried a white "Balkenkreuze" cross on the sides and on turret as a national symbol, which was replaced in 1940 with the Teutonic cross - a black one with a thin white border. The front and the rear wore yellow insignia of divisions and regiments. The tanks that in 1940-1941 were operational within the tank groups under command of F. Kleist and H.W. Guderian were marked with white letters K and G on the hull or the mudguards.

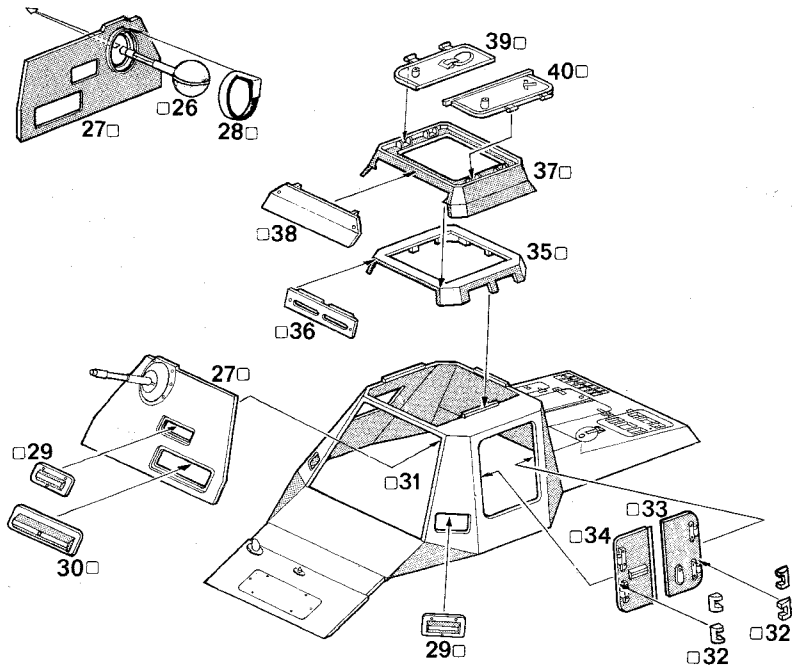
The command tanks tactical letters and numbers positioned on the cabin sides were white, later on - black and red with white border. The regiment headquarters designation was letter R, while battalion headquarters had Roman numerals I, II or III (the latter was true in 1941 for in the 3rd, 6th, 7th, 8th, 12th, 17th, 18th, 19th and 20th armored divisions). Then came two figures: 01 for the regiment or battalion commander, 02 for the commander aid, 03 for the executive officer, 04 for the signal officer.



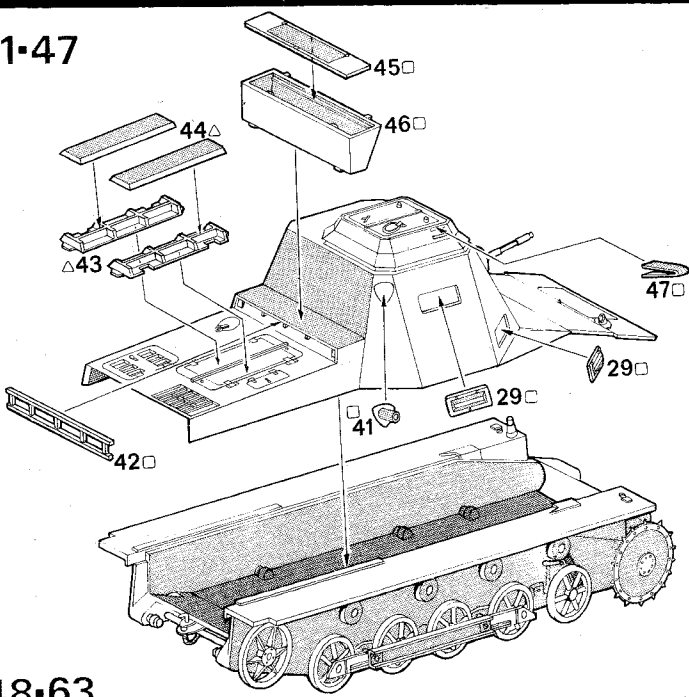
1 1-25



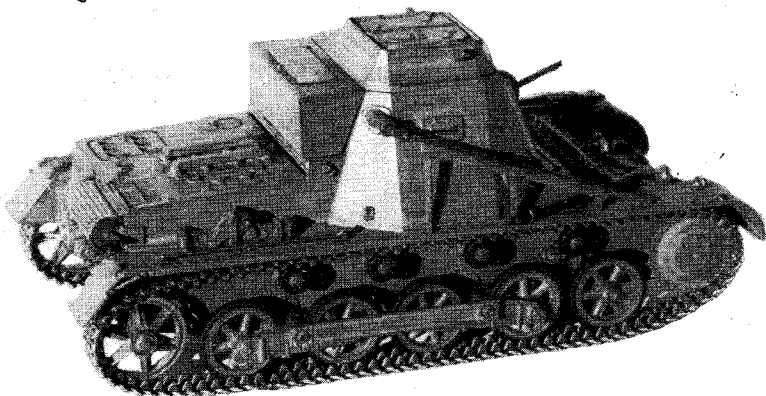
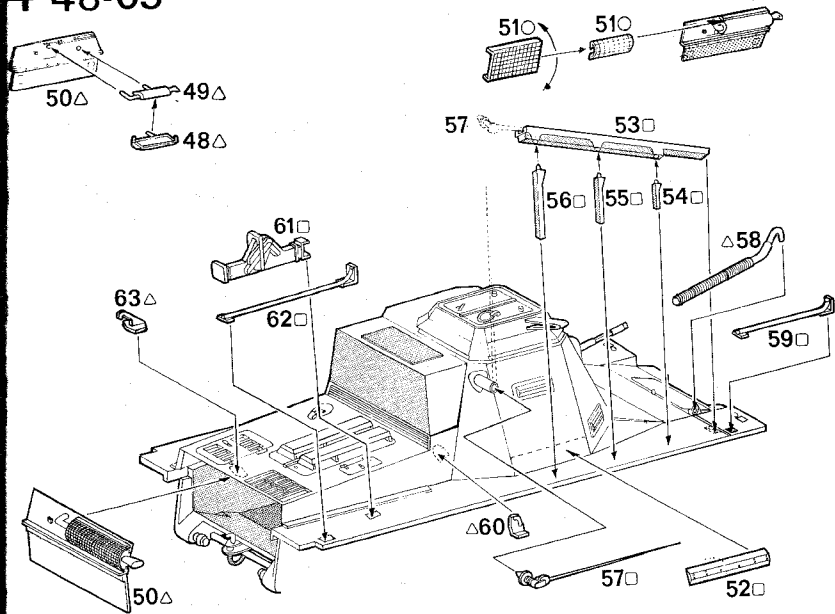
2 26-40



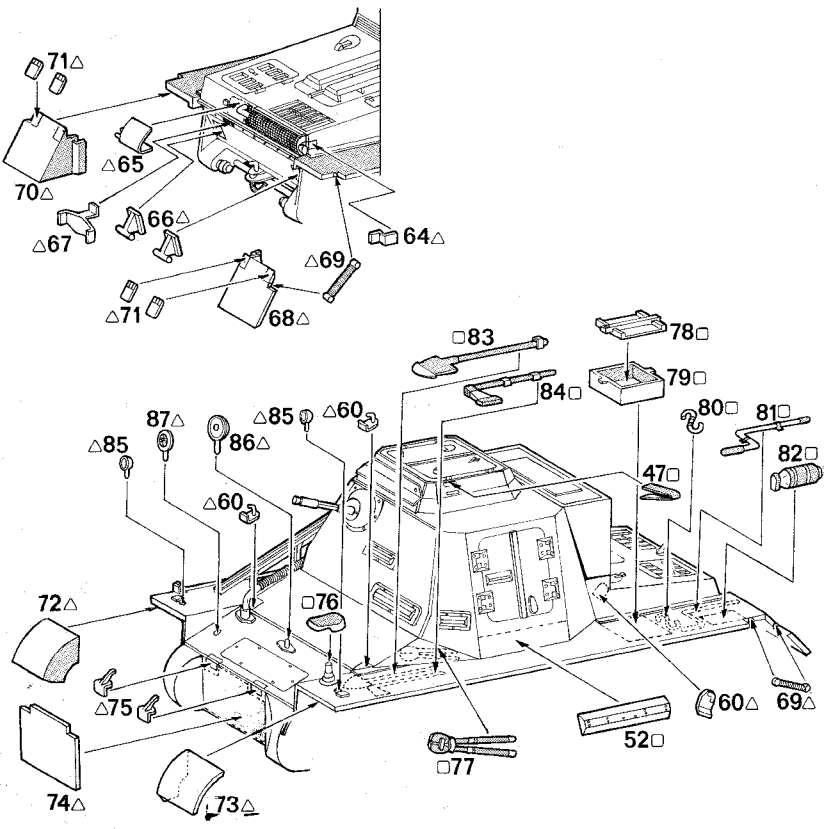
B 41-47



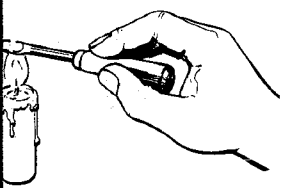
4 48-63



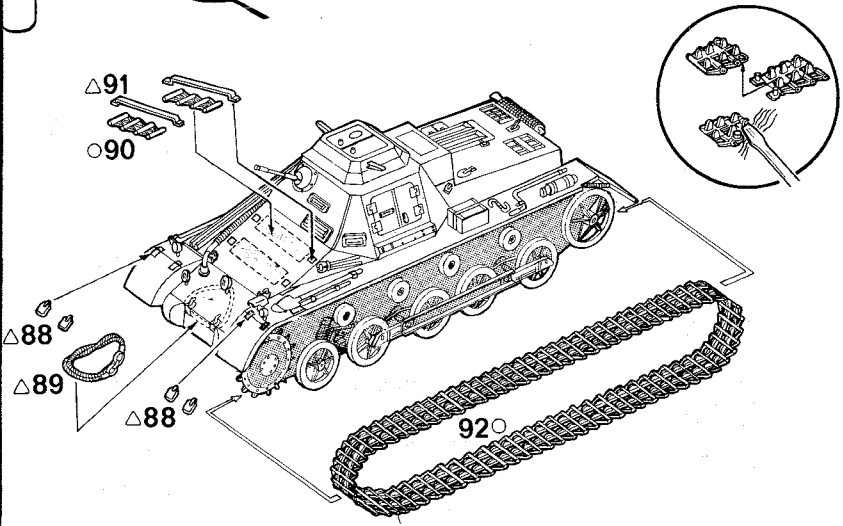
5 64-87

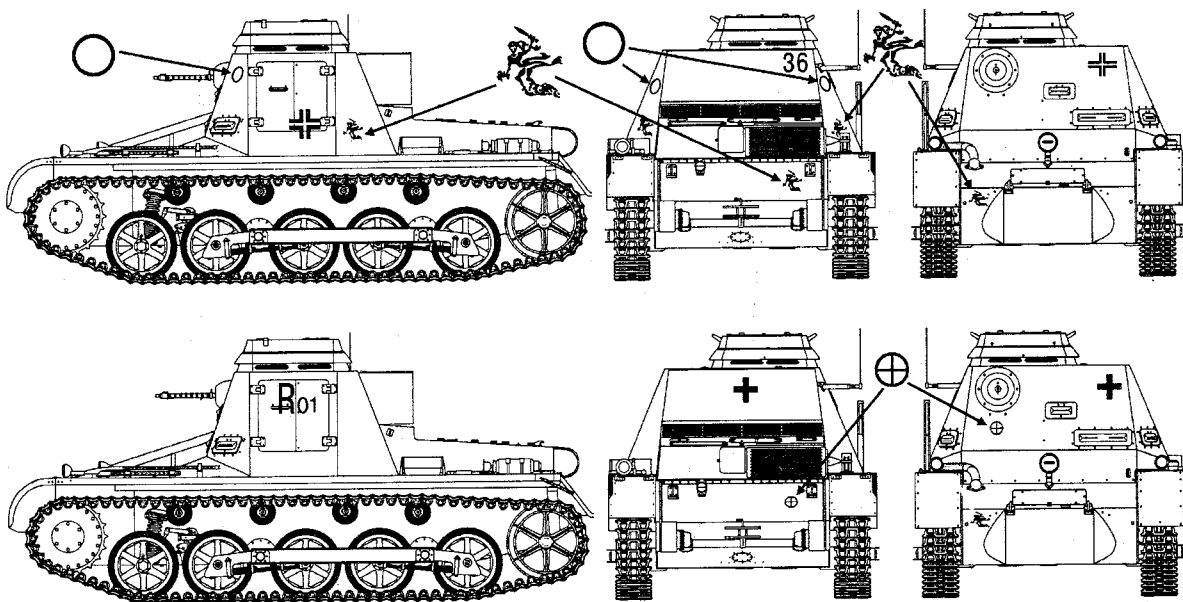
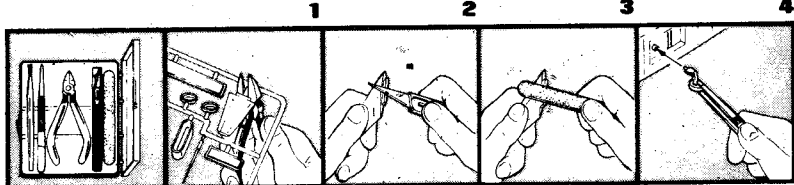


6 88-92



Enlarge indicated pins with heated screw-driver.





Assembly directions:

1. Use a sharp knife or a pair of scissors to remove parts from the sprue. For easy assembly each part is numbered. Paint small parts before removing from the sprue.
2. Care should be taken when using tools and modelling knives, as these can cause personal injury.
3. Plastic parts broken from sprues can have sharp, pointed or jagged edges. Remove these with a file or an emery board.
4. Keep out of the reach of children under 36 months old, as some parts are detachable. Children must not be allowed to suck any metal part or wire included with this kit.
5. This document should be retained for reference at a later date, if the need arises, as it includes the "EEC" company name and address as a means of identification of the importer and supplier.

MANUFACTURER:

ZVEZDA, PROMYSHLENNAYA, 2 - LOBNYA, 141730, RUSSIA

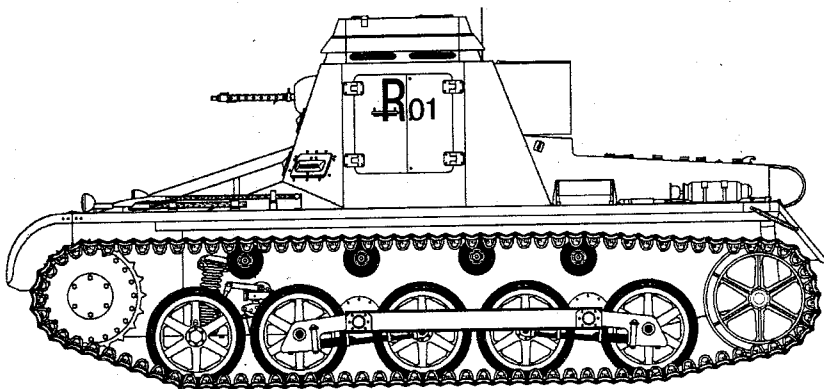
SELLER:

ITALERY SPA VIA, PRADAZZO, 6 - CALDERARA (BO), ITALY

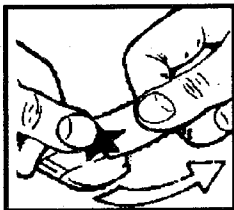
Painting instruction The indicated colour numbers refer to the ITALERI **MODEL MASTER** part number.

A
1706 Model Master
FS33531
Sand

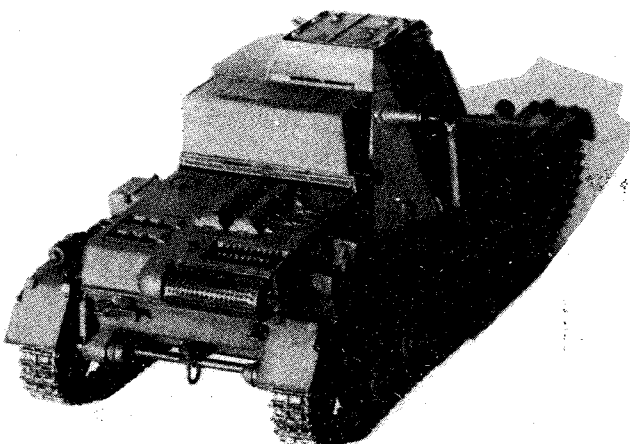
B
1740 Model Master
FS36231
Dark Gull Gray



Direction for applying the decals:



Cut each image out of the backing sheet: soak in water for about 1/2 minute; place the decal in exact position and remove the backing sheet. Remove excess water with the cotton swab.



- 1 BLACK
- 2 BLACK LEATHER
- 3 GREY GREEN
- 4 DRAK BLUE-GREEN

