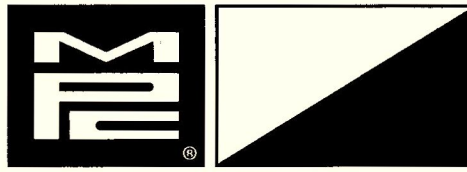


# MACK<sup>®</sup>



## DM 600 TRACTOR





## MACK DM 600 SPECIFICATIONS

**ENGINE:** ENDT 673, 6 Cylinder

**BORE & STROKE:** 4 7/8 x 6

**DISPLACEMENT, Cu.In:** 672

**BRAKE H.P., R.P.M.:** 225 at 2100

**MAXIMUM TORQUE, R.P.M.:** 653 at 1500

**FIRING ORDER:** 1-5-3-6-2-4

**COMPRESSION RATIO:** 16.11:1

**WHEELBASE:** 162"

**TRANSMISSION:** 5 Speed Maxitorque

**CLUTCH:** Mack CL 68

**FRONT AXLE:** Mack Fa-534  
Reversed - Elliot  
Drop Forged I-Beam.

**BOGIES:** SWDL 56 Carrier  
CRPDC 92 & CRD 93

**FUEL TANKS:** 65 Gal., L.H., Aluminum,  
Rect., 2 step.  
40 Gal., R.H., Aluminum,  
Rect., Step.

**TIRE SIZES:** 11:00 - 20

**RIMS:** Cast spoke chrome.

**REAR BRAKES** - Timken 15 x 6, (377) (Stop Master).

**FRONT BRAKES** - 16 1/4 x 3" (204) Air Brakes.

### IMPORTANT: READ THIS FIRST

You are about to construct the Mack DM600. Before you begin building, look over and study the instruction sheet carefully. Check parts with the illustrations and numbers; test fitting all components prior to assembly. Scrape the plating and/or paint from cementing surfaces to insure strong bonding.

Some parts may have to be trimmed to fit or for appearance because of excess plastic (or flash). Follow the numbering sequence as shown. Use only cement and paints designed for

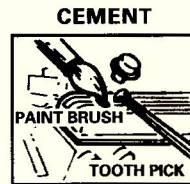
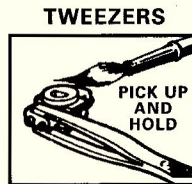
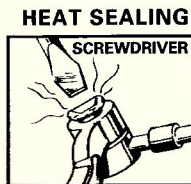
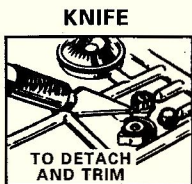
styrene plastic. Other materials will damage your model.

Clear plastic parts (glass) are indicated as: (clear).

Cement all parts together unless indicated by (do not cement).

When painting parts for assemblies, leave those parts on runners or hold with a small clamp or "alligator" clip. Allow all painted parts to dry completely before assembling. See back page for more painting details. Remember patience while building is your best tool. Note: this kit includes extra parts.

### GET YOUR TOOLS READY

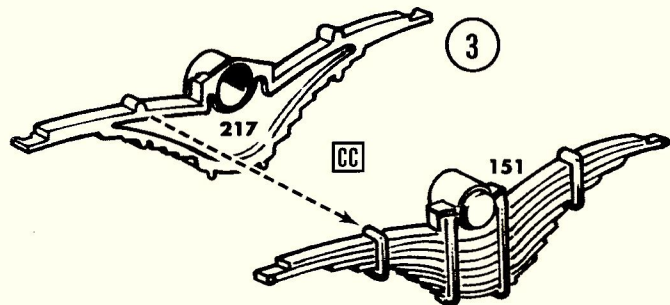
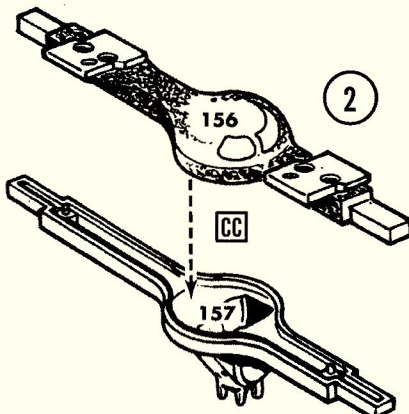


**27** PLATED PARTS

**19** NON PLATED PARTS

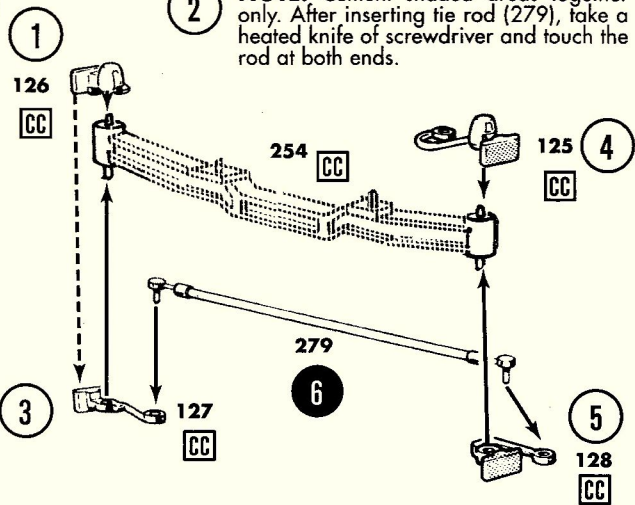
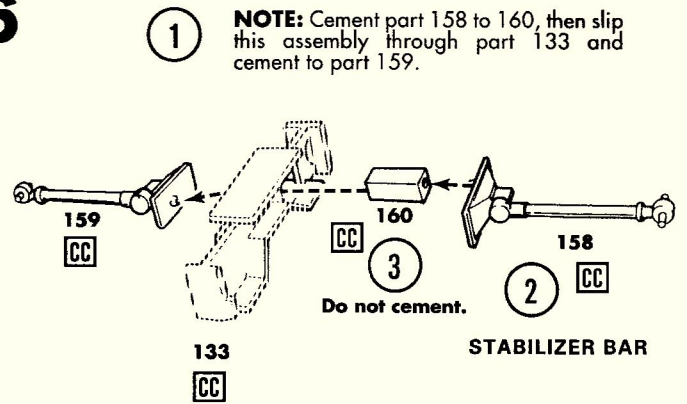
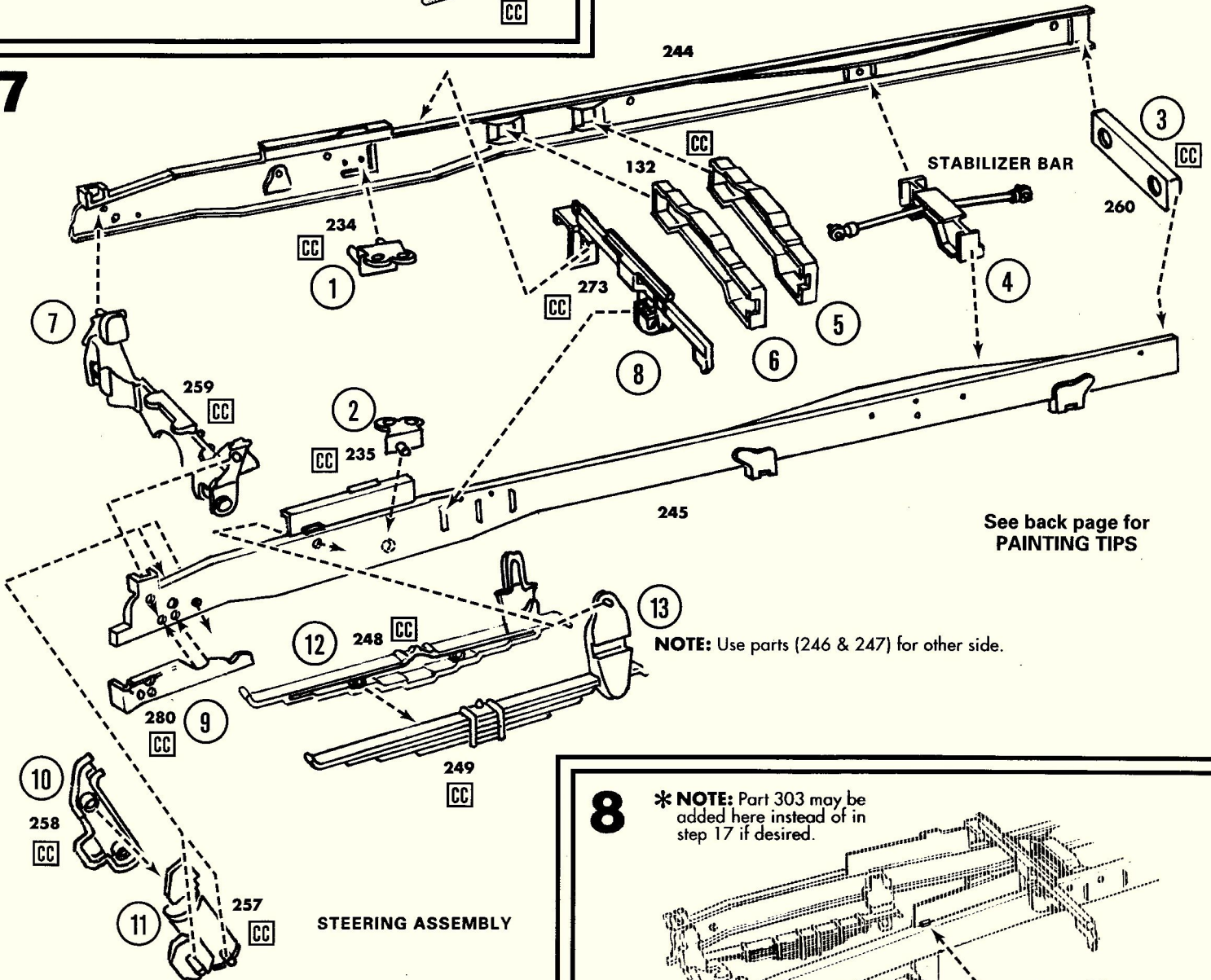
**201** PART NUMBERS

**1**

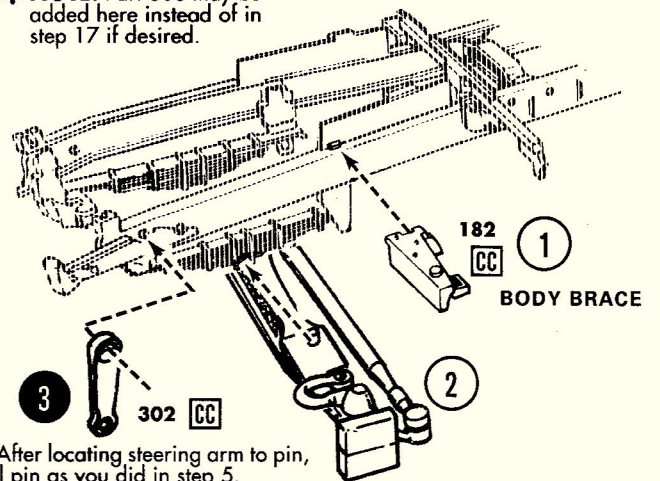


**1** **NOTE:** Cement parts (157 & 156) together. Note there are two pairs of these differentials. Also cement rear leaf springs (151 & 217) together. There are also two sets of springs.

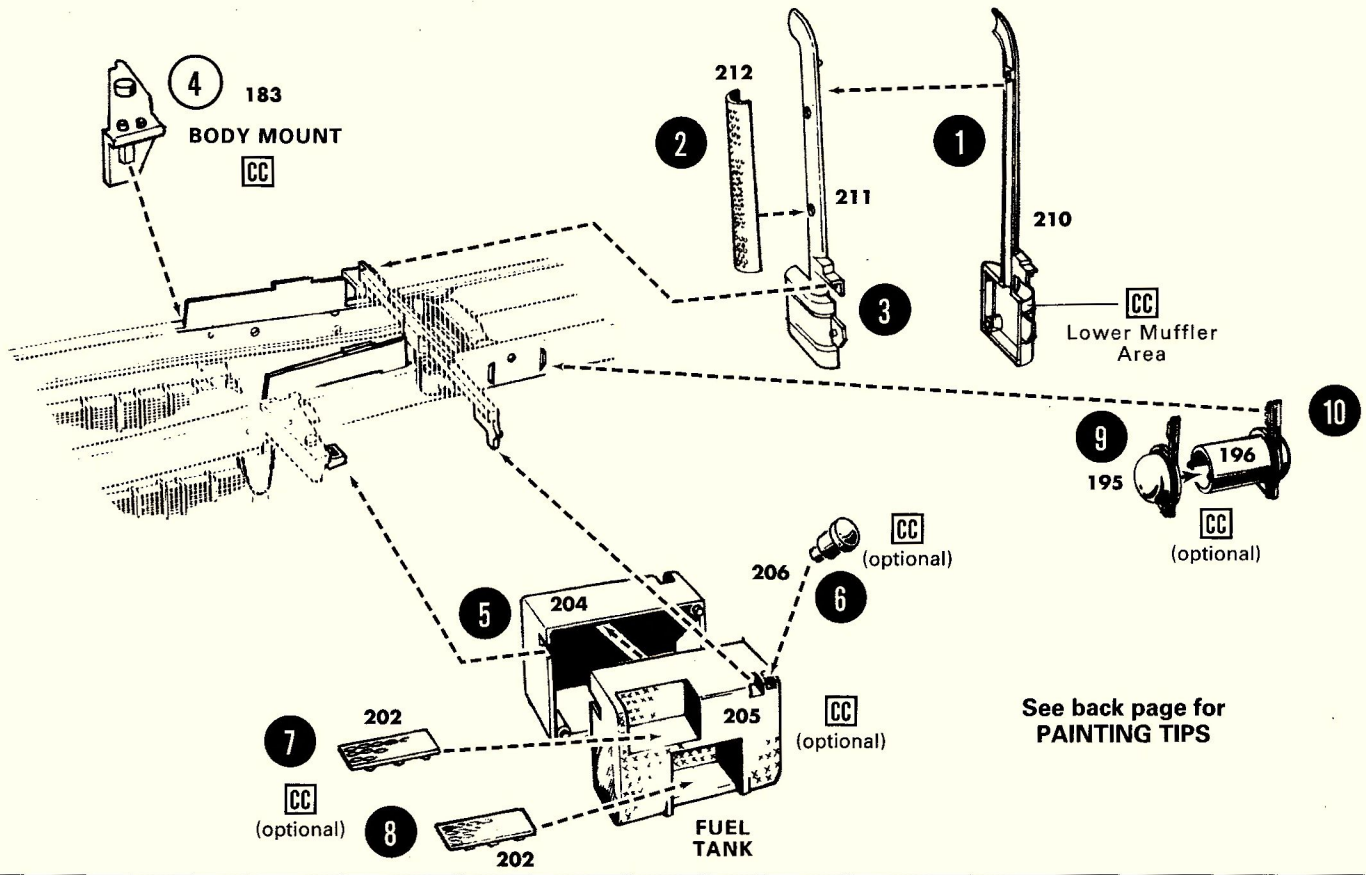


**5****6****7****8**

\* **NOTE:** Part 303 may be added here instead of in step 17 if desired.



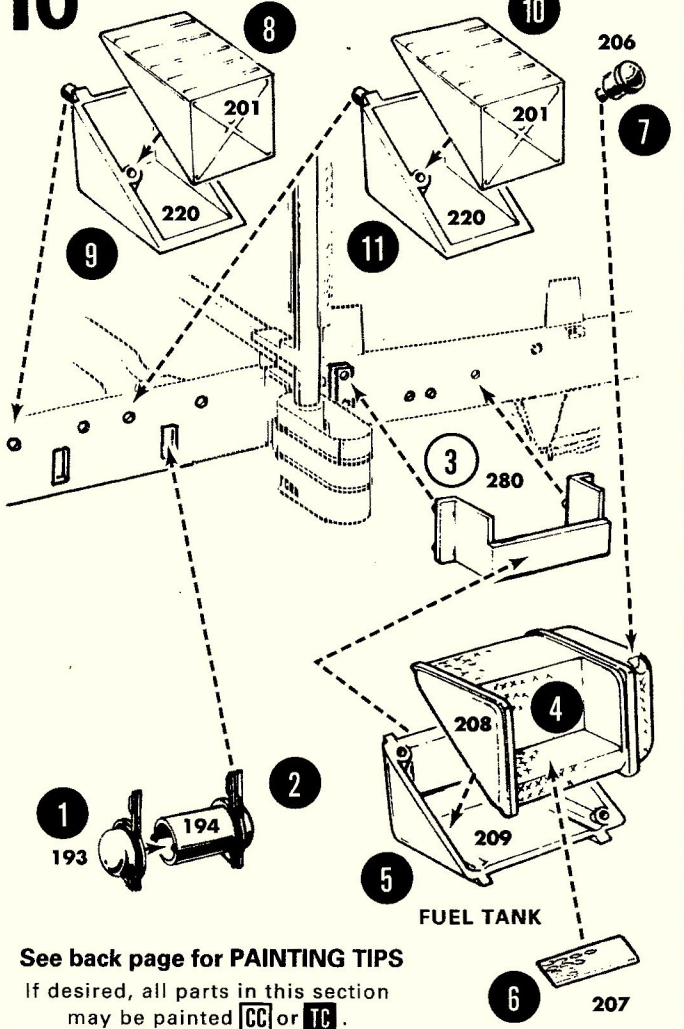
9



See back page for PAINTING TIPS

10

BATTERY BOX

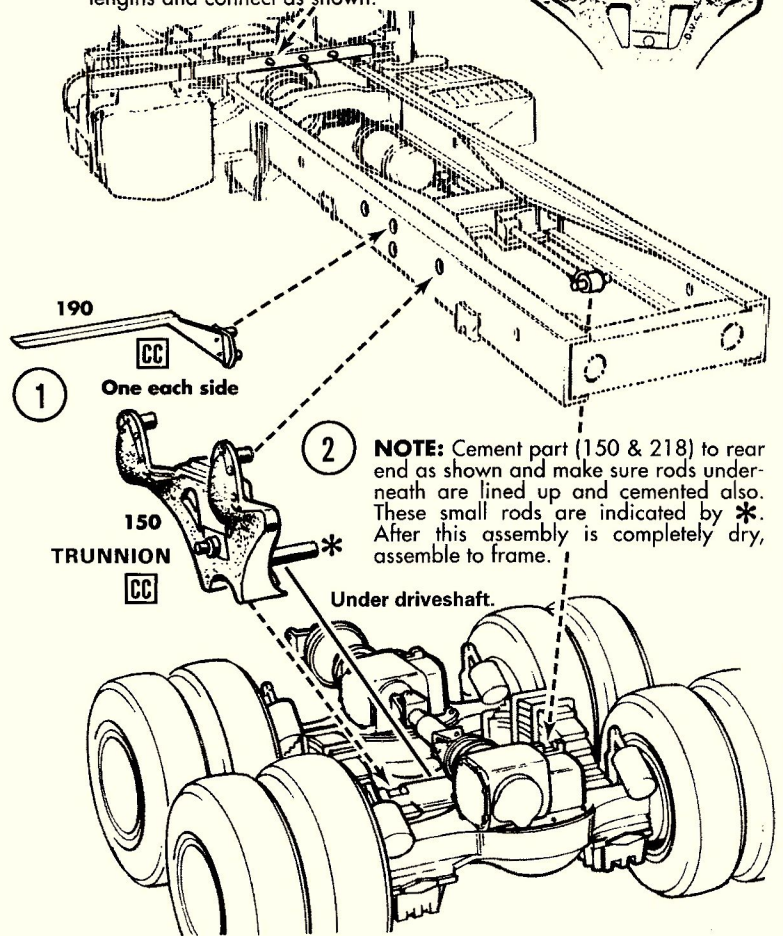
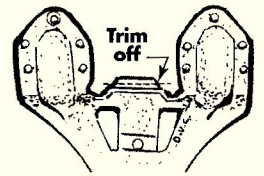


See back page for PAINTING TIPS

If desired, all parts in this section may be painted **CC** or **TC**.

11

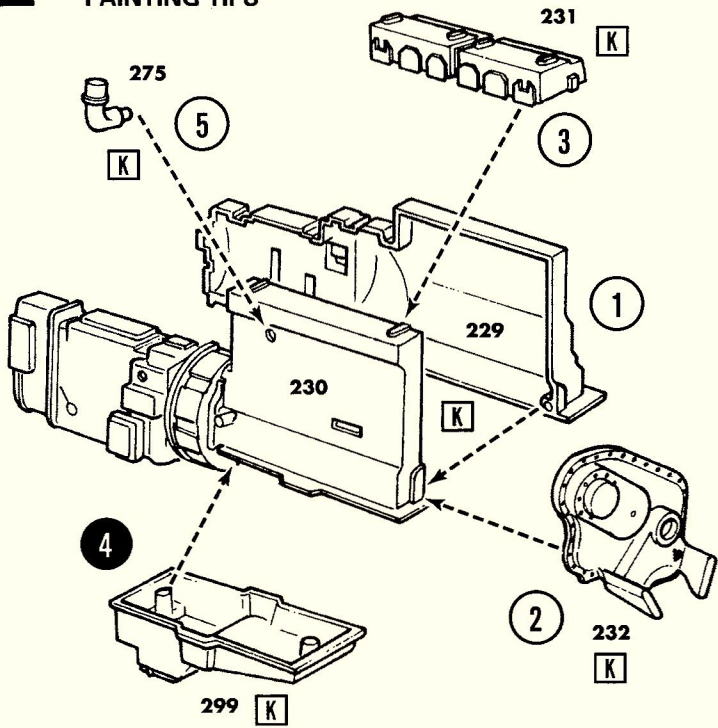
**NOTE:** These locating pins are to be used with optional hose contained in the kit. If you should build the tractor and trailer, cut the hose into three equal lengths and connect as shown.



**NOTE:** Cement part (150 & 218) to rear end as shown and make sure rods underneath are lined up and cemented also. These small rods are indicated by \*. After this assembly is completely dry, assemble to frame.

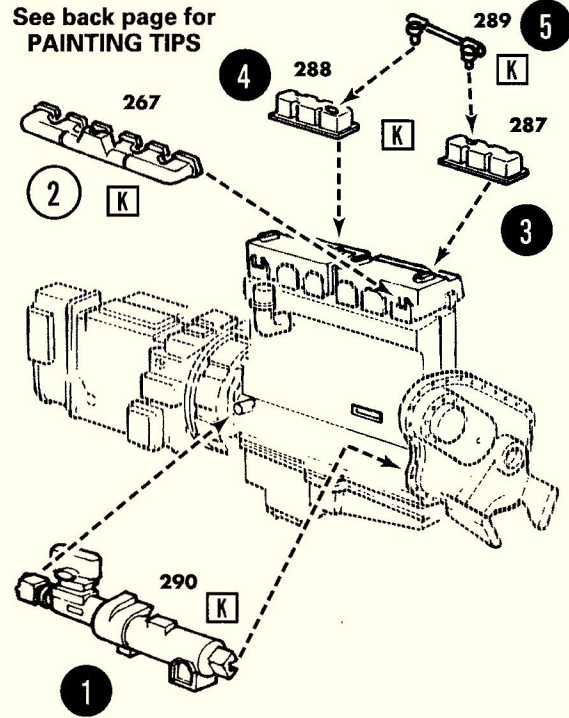
# 12

See back page for PAINTING TIPS



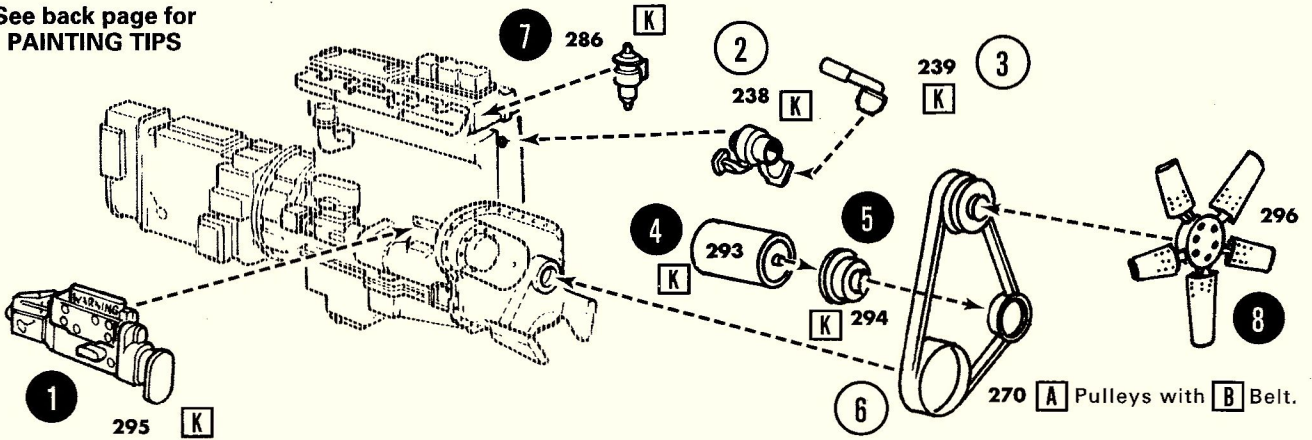
# 13

See back page for PAINTING TIPS



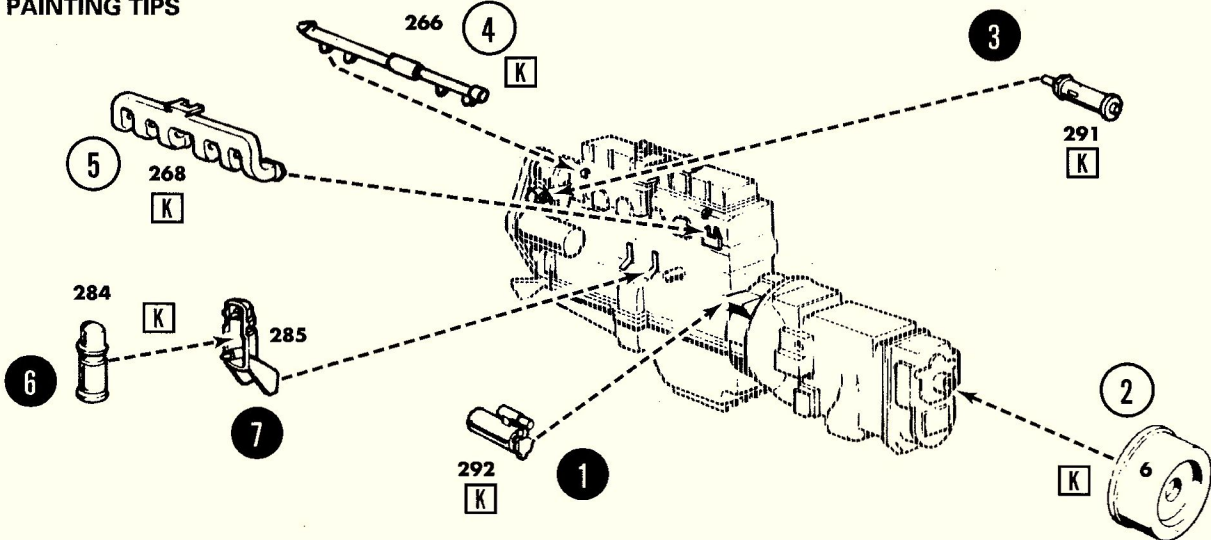
# 14

See back page for PAINTING TIPS



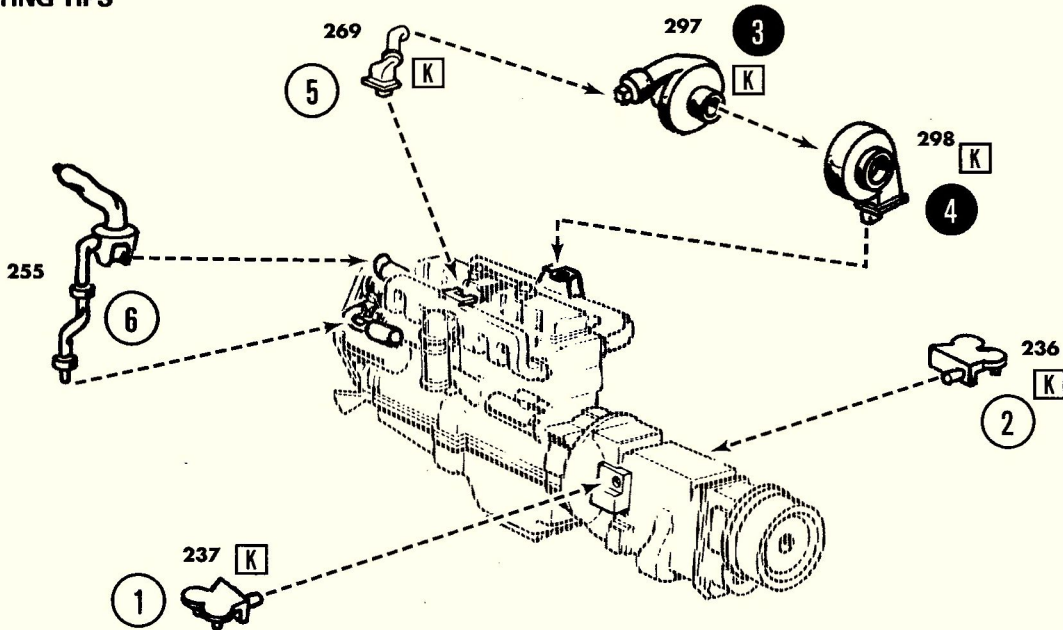
# 15

See back page for PAINTING TIPS



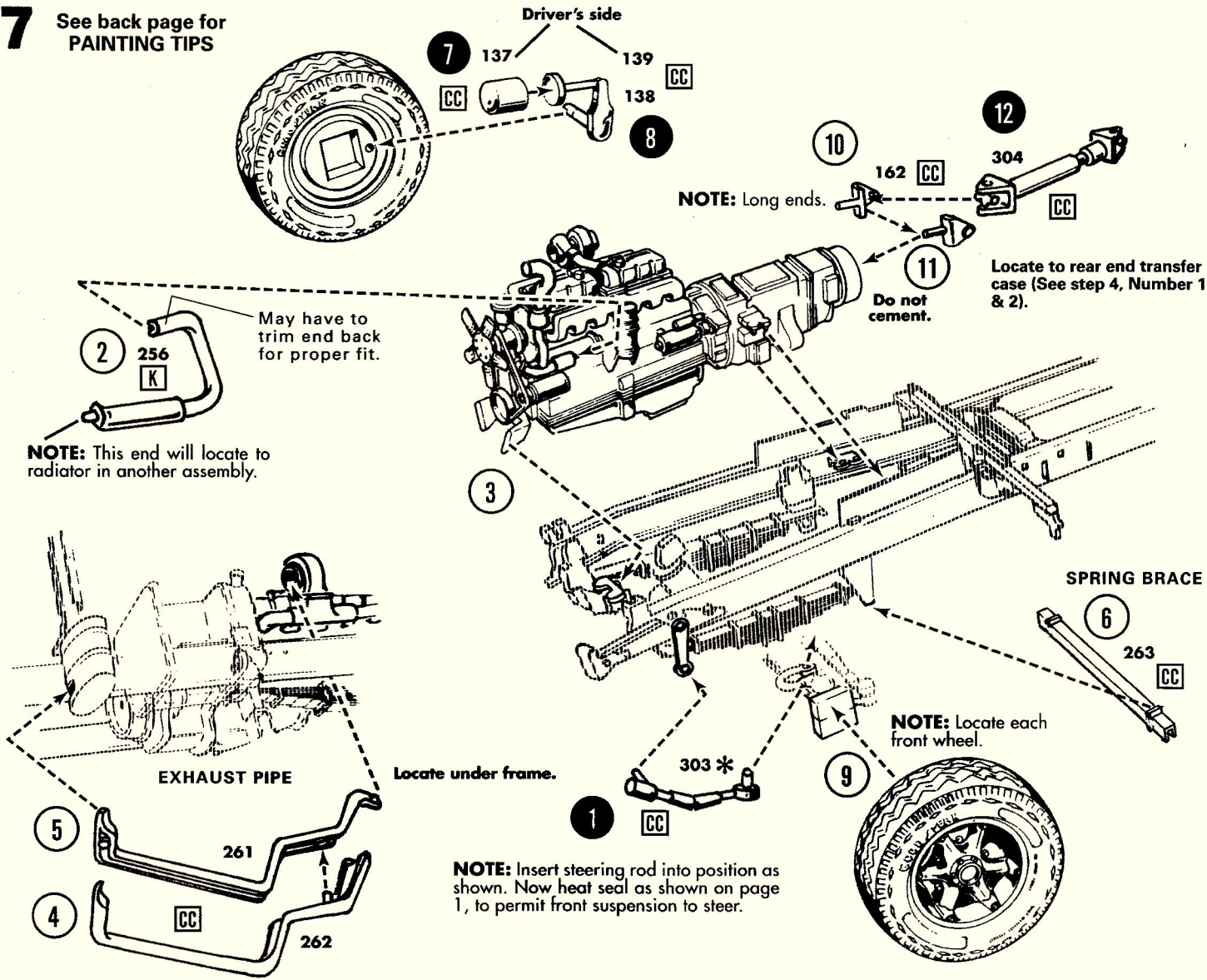
# 16

See back page for PAINTING TIPS

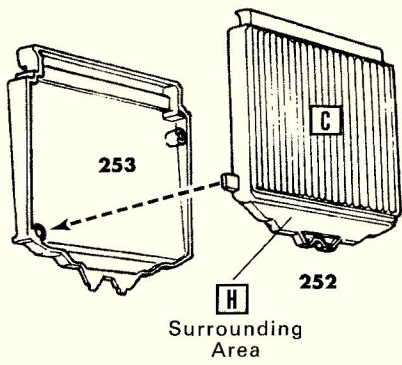


# 17

See back page for PAINTING TIPS

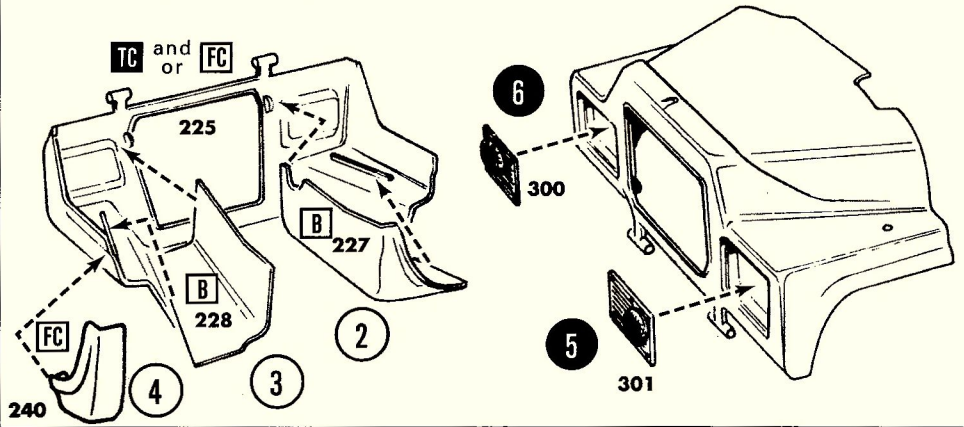


# 18

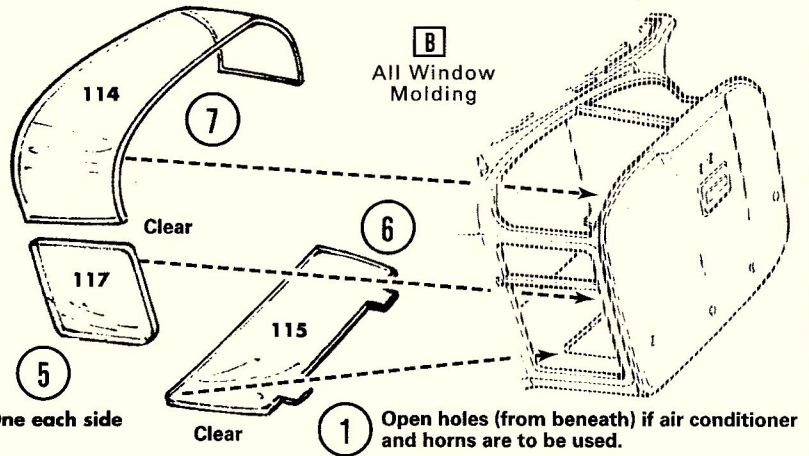
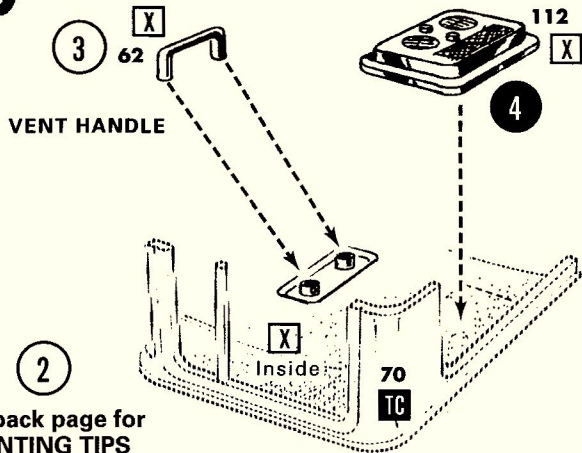


# 19

1 See back page for PAINTING TIPS

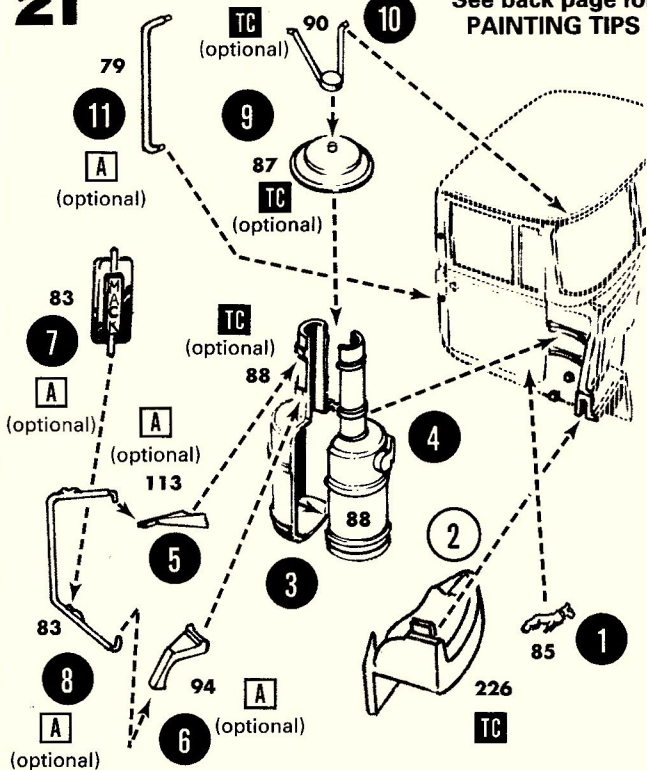


# 20



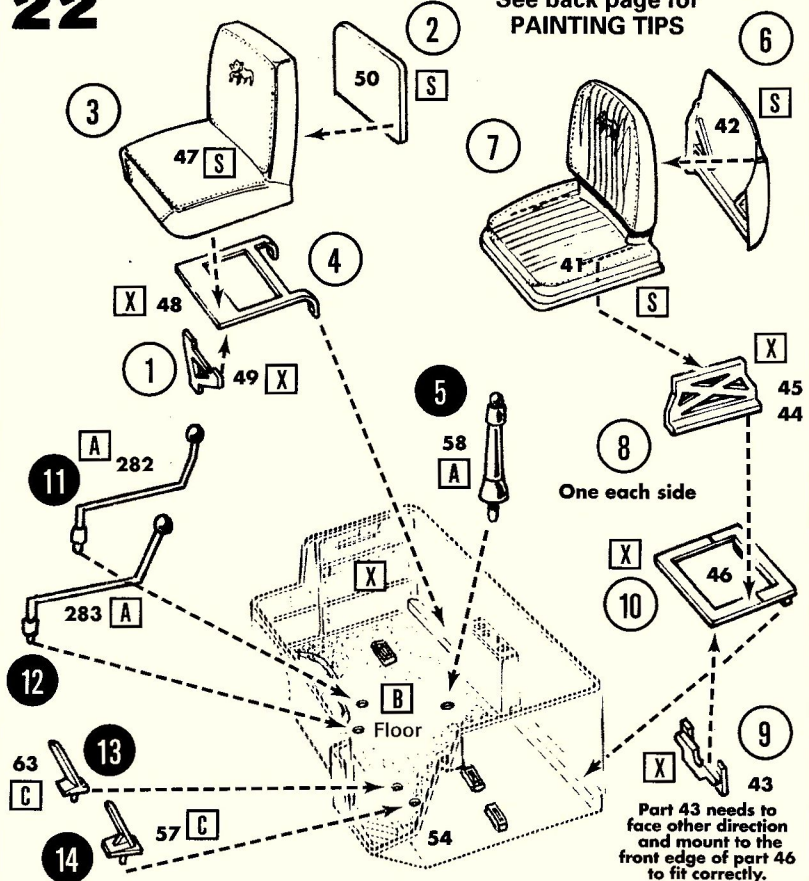
# 21

See back page for PAINTING TIPS



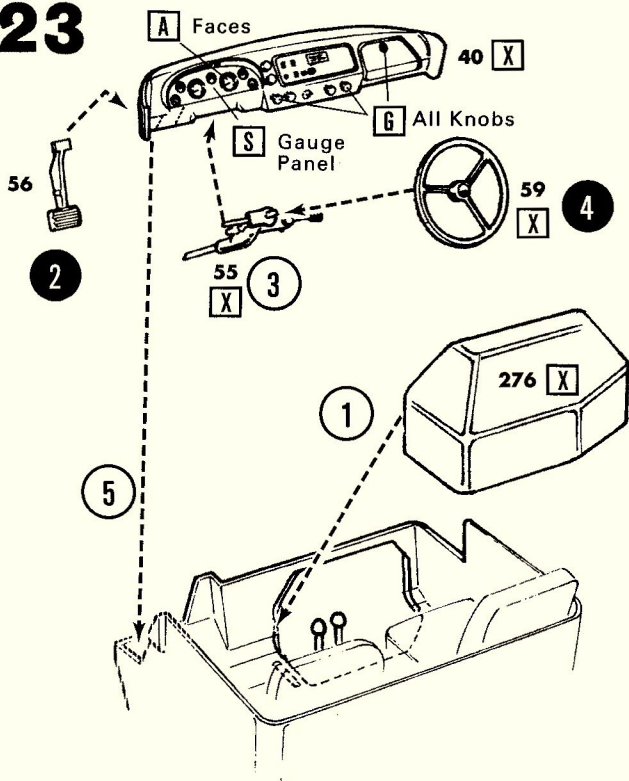
# 22

See back page for PAINTING TIPS

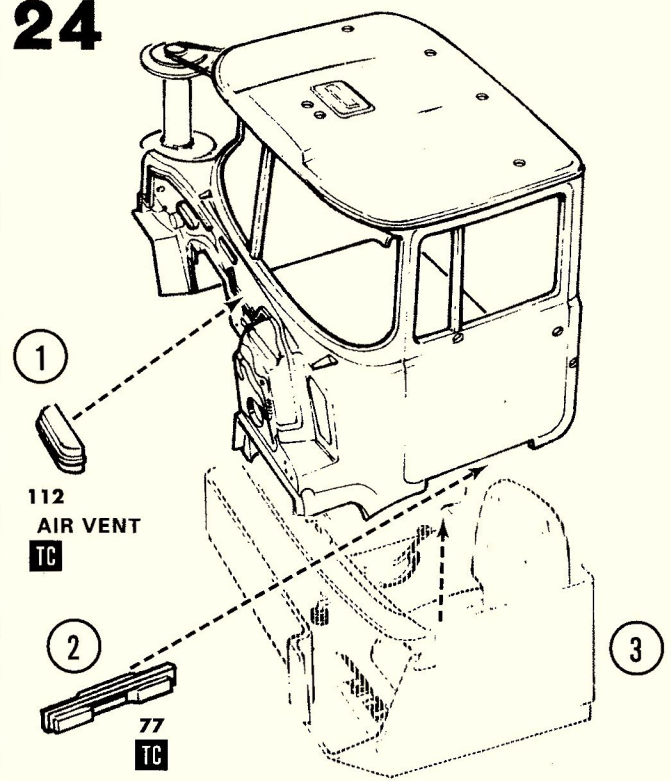




# 23

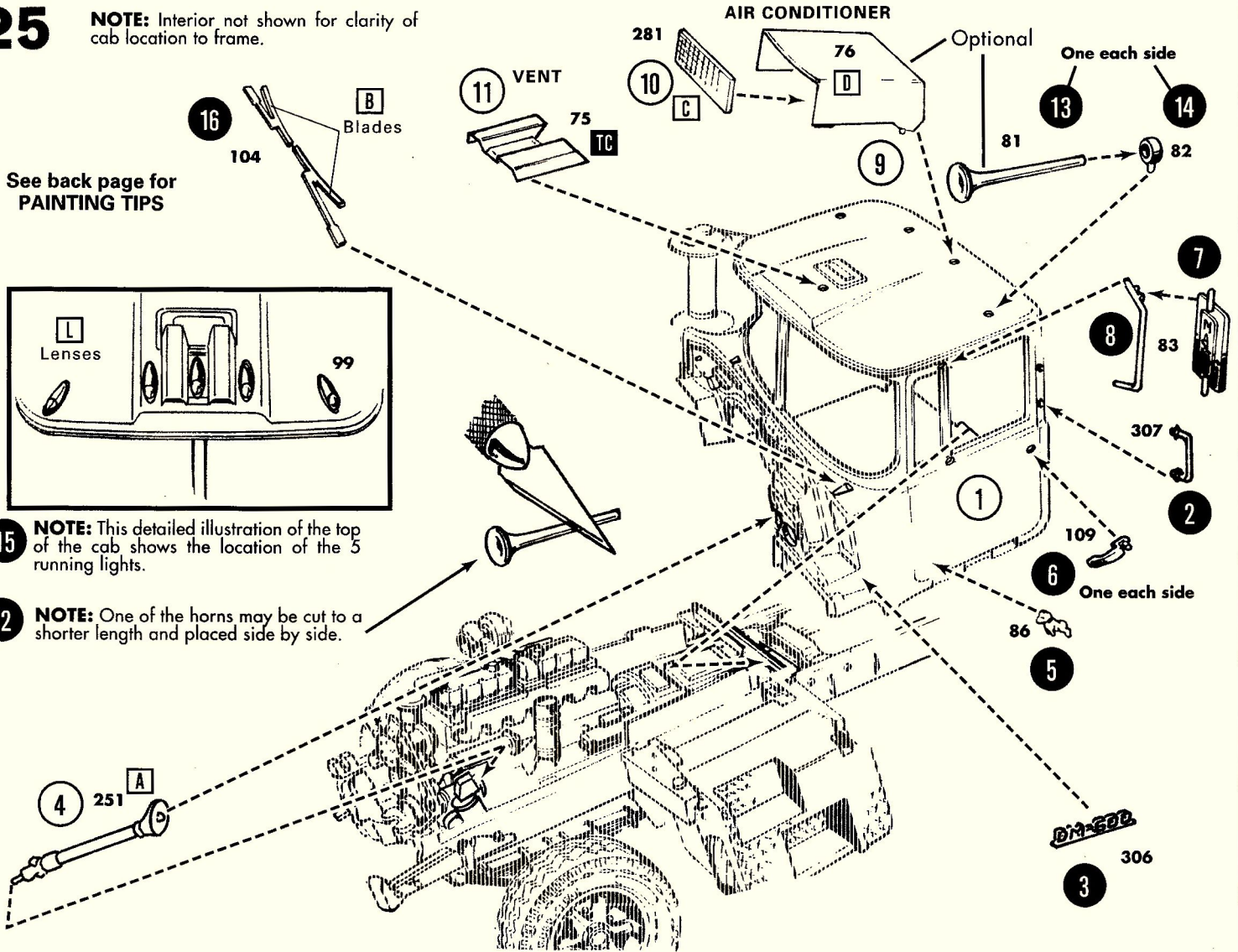


# 24



# 25

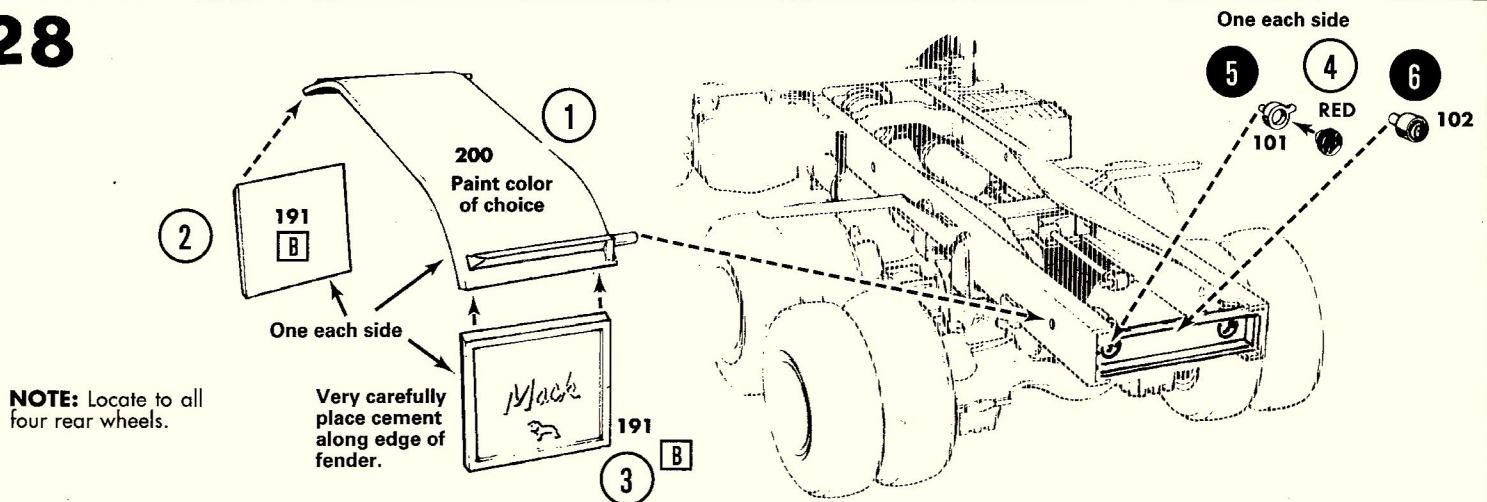
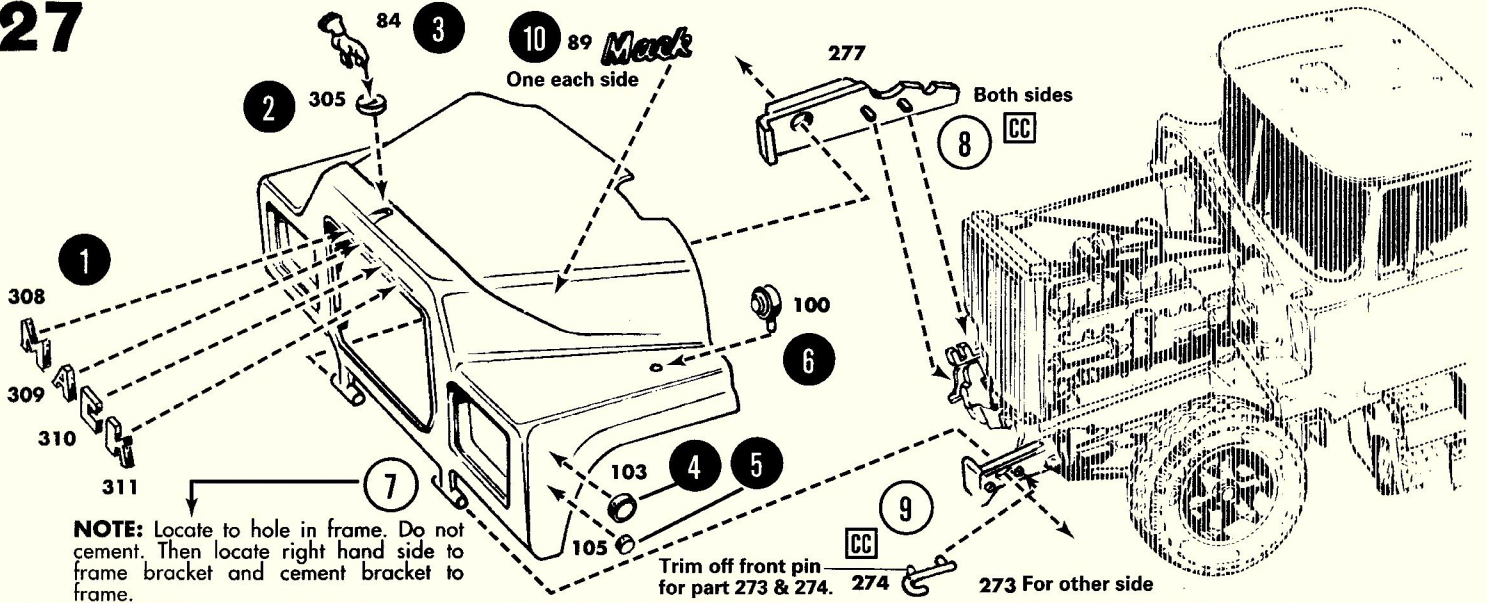
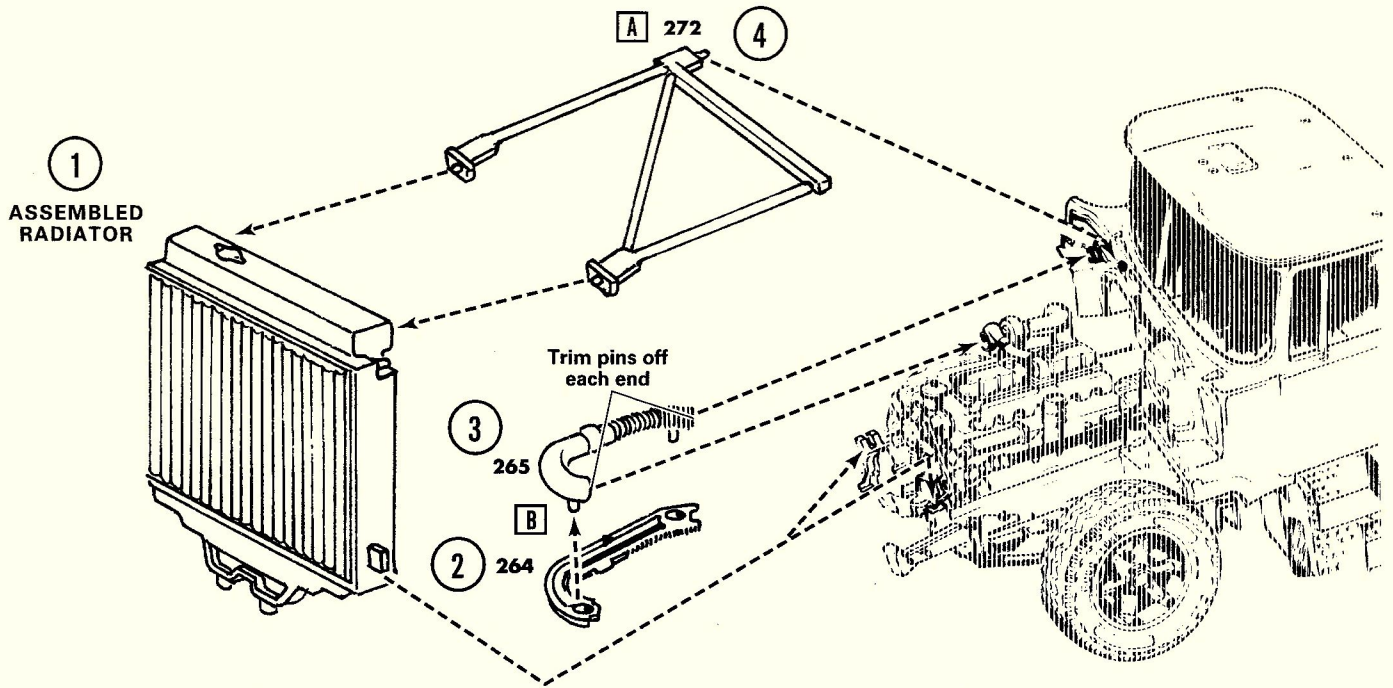
**NOTE:** Interior not shown for clarity of cab location to frame.



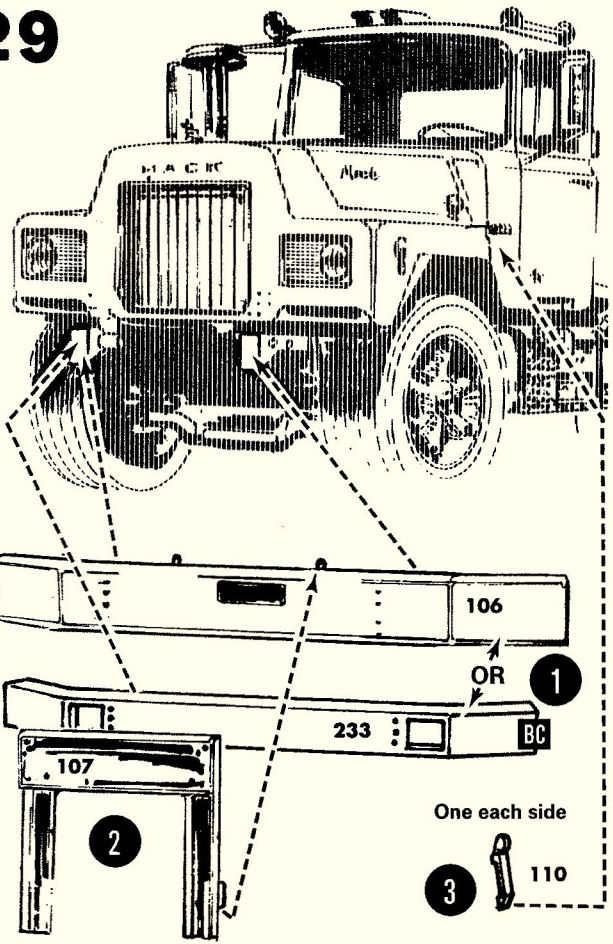
See back page for  
**PAINTING TIPS**

**15** **NOTE:** This detailed illustration of the top of the cab shows the location of the 5 running lights.

**12** **NOTE:** One of the horns may be cut to a shorter length and placed side by side.

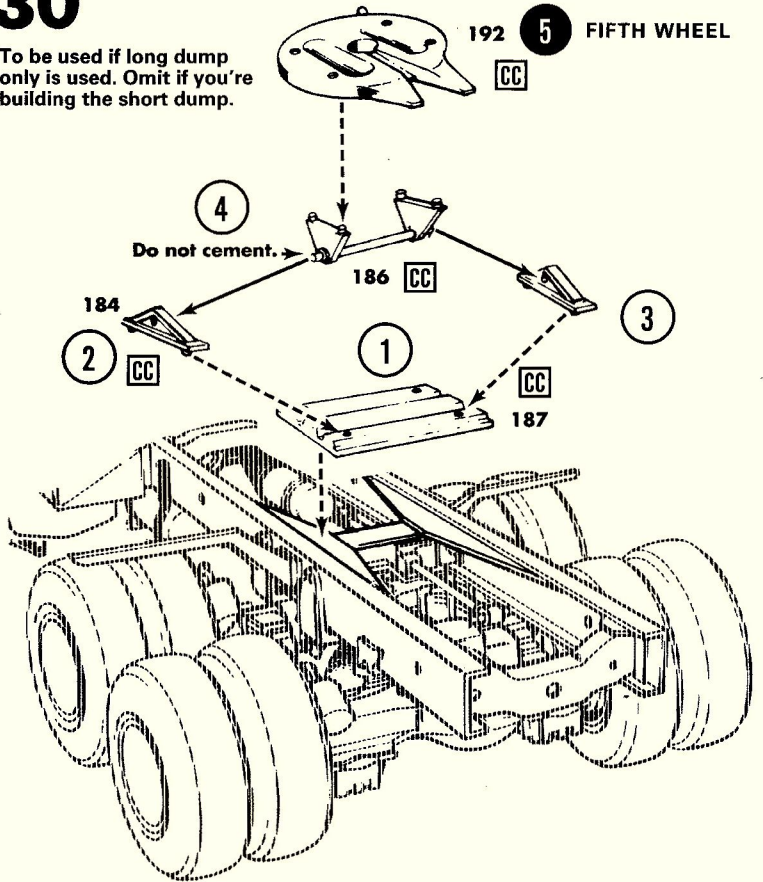


29



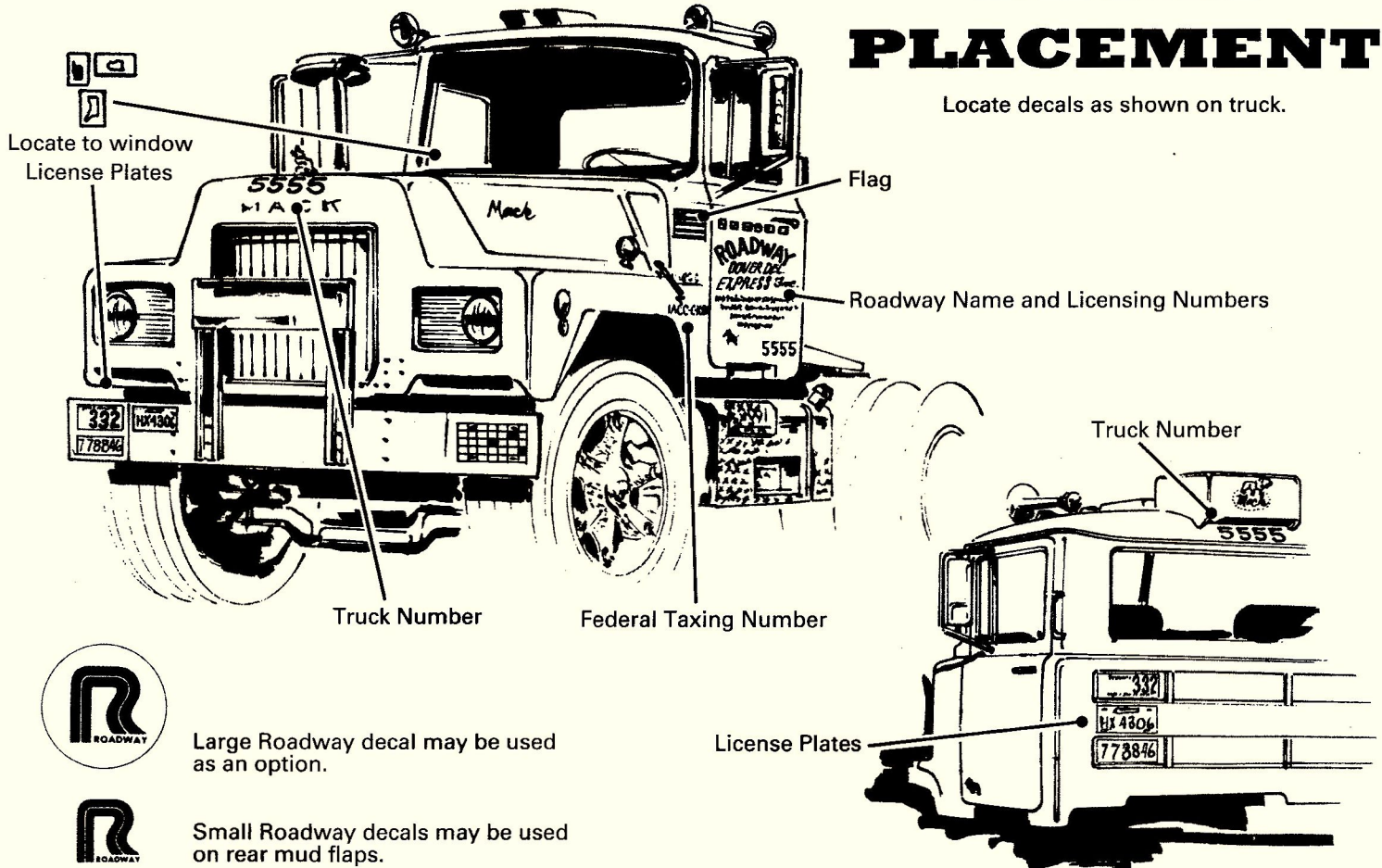
30

To be used if long dump only is used. Omit if you're building the short dump.



# DECAL PLACEMENT

Locate decals as shown on truck.



Large Roadway decal may be used as an option.



Small Roadway decals may be used on rear mud flaps.

# PAINTING TIPS

## Roadway Fleet Truck Livery:

Assemble the chassis and chassis components including fuel tanks, battery box and 5th wheel and paint them Dark Blue. Paint the hood Dark Blue and the cab and bumper Orange. Paint underside of hood Flat Black. Detail the wheels with Orange inner spokes and a Steel outer ring. Assemble and Paint the engine Gold (before or after adding chrome parts). Paint interior tub, underside of cab roof, steering column, instrument panel and heater Light Green (more of a mint green). Paint seat upholstery Dark Brown. Paint side mirrors Black (leave faces Chrome).

## Non Fleet Colors:

Assemble the chassis and chassis components including fuel tanks, battery box and 5th wheel and paint them Black. Paint the hood and cab color of choice. Paint underside of hood Flat Black. Assemble and Paint the engine Gold (before or after adding chrome parts). Paint interior tub, underside of cab roof, steering column, instrument panel and heater Light Green (more of a mint green). Paint seat upholstery Dark Brown.

**Box Art Truck:** Paint the hood and cab Red with a Gloss Black chassis and rear fenders. (Optional Paint Scheme: Red Cab with front area of hood that wraps around to the fenders painted Gloss Black. Front fenders and chassis painted Gloss Black as well.) Underside of hood Flat Black. Assemble and Paint the engine Gold (before or after adding chrome parts). Paint interior tub, underside of cab roof, steering column, instrument panel, and heater Light Green (more of a mint green). Paint seat upholstery Dark Brown.

**Additional Notes:** Fuel tanks, battery boxes and wheels were almost always painted to match the chassis, the cab or an accent color. Search online for further details.

### PAINT COLORS

<b>A</b>	Black	<b>L</b>	Amber	<b>W</b>	Transparent Blue
<b>B</b>	Flat Black	<b>M</b>	Transparent Amber	<b>X</b>	Lt. (Mint) Green
<b>C</b>	Semi-Gloss Black	<b>N</b>	Red	<b>Y</b>	Dark Green
<b>D</b>	White	<b>O</b>	Transparent Red	<b>Z</b>	Gray
<b>E</b>	Flat White	<b>P</b>	Orange	<b>FC</b>	Fender Color
<b>F</b>	Silver	<b>Q</b>	Yellow	<b>CC</b>	Chassis Color
<b>G</b>	Chrome (Bright Silver)	<b>R</b>	Tan	<b>TC</b>	Truck Cab Color
<b>H</b>	Aluminum	<b>S</b>	Dark Brown	▲	Semi-Gloss
<b>I</b>	Steel	<b>T</b>	Lt. Blue	△	Gloss
<b>J</b>	Brass	<b>U</b>	Med. Blue	▲	Metallic
<b>K</b>	Gold	<b>V</b>	Dark Blue		



[round2models.com](http://round2models.com)



Round 2, LLC  
4073 Meghan Beeler Court  
South Bend, IN 46628



International Hobbycraft (UK) Ltd.  
21 St. Thomas Street  
Bristol BS1 6JS England

