

## R.A.A.F. D.H. VAMPIRE FB.31

1/72 SCALE CONVERSION No. 72-002

This RESIN CONVERSION contains the following parts:

1. 1 x EJECTOR SEAT.
2. 2 x ELEPHANT EAR INTAKES.
3. 2 x BOMB RACKS.
4. 2 x BOMBS.
5. 1 x VHF ANTENNA.
6. 1 x RADAR RANGING GUNSIGHT FAIRING.
7. 2 x COPPER WIRE.

Designed to be used with the HELLER or REVELL 1/72 scale De Havilland Vampire kits.

For best results, it is suggested that the Heller / Revell SNCASE SE.535 MISTRAL (French Vampire) centre fuselage be used, as it incorporates the larger diameter exhaust as used on the R.A.A.F. Vampire F.30 and FB.31.

For all other parts required, use the Heller / Revell Vampire FB.5 kit parts, as it has the correct air intakes, wheels etc.

The extra cost involved in using a second kit is well worth while as the larger exhaust is very conspicuous.

### \*\*IMPORTANT NOTES\*\*

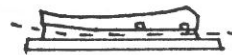
1. Wash all resin parts in warm soapy water prior to painting.
2. Use only small amounts of SUPER GLUE (CYANOACRYLATE) to adhere resin parts to your model.
3. \*\*\*\*\*VERY IMPORTANT\*\*\*\*\*  
When using Cyanoacrylate glue and sanding resin parts, all due care should be taken NOT to inhale the fumes or resin dust.  
BE CAREFULL!!



Cut Ejector seat from runner with a sharp razor saw.



Cut "Elephant Ear" intakes from runner with a sharp razor saw.  
For ease of handling, adhere intakes to model prior to filing and sanding excess runner.



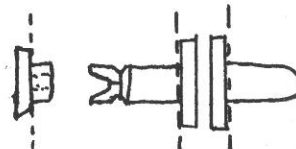
Cut Bomb Rack from runner with a sharp razor saw.  
Clean up with needle file.



Cut VHF antenna and mounting from runner with sharp razor saw.



Cut or snap Radar Ranging Gunsight fairing from runner with sharp razor saw.  
Clean up with needle file.



Cut Bomb parts from runner with sharp razor saw. Glue front to rear of bomb followed by bomb tail ring.

1/72

# PLANE BITS

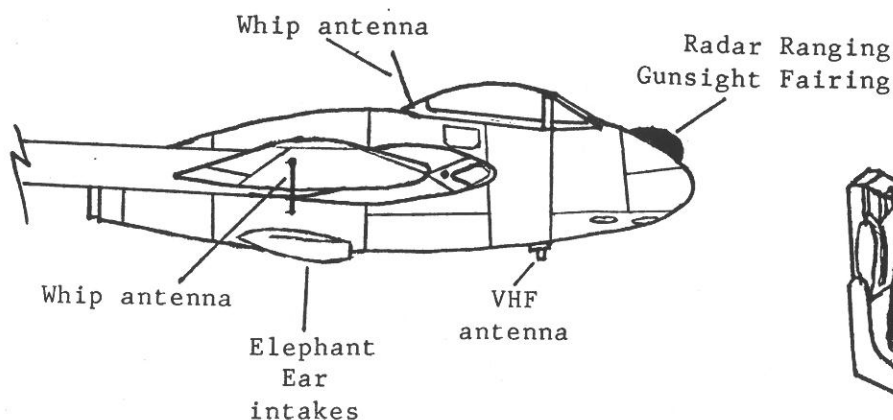
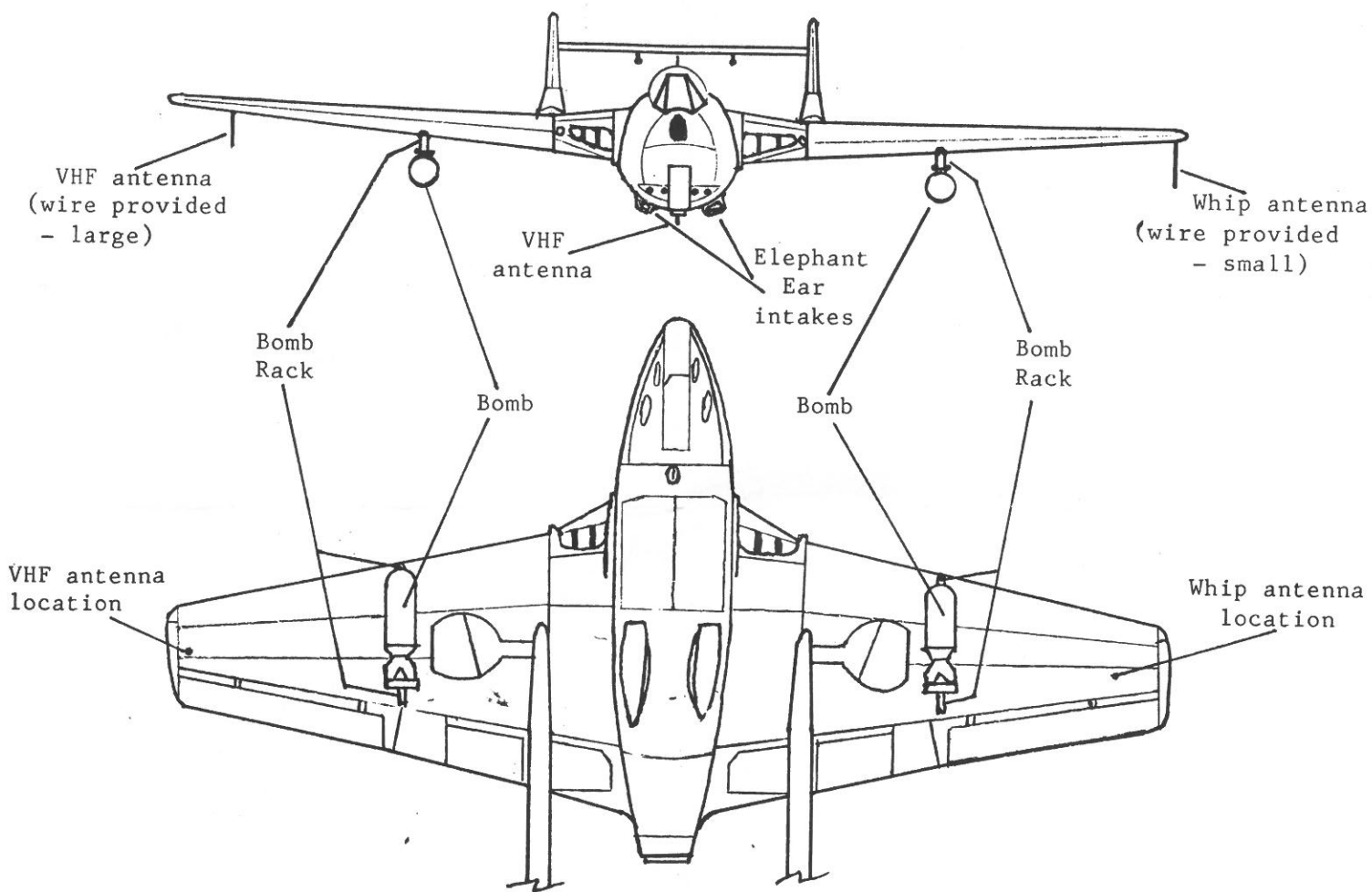



CONVERSION  
No. 72-002

Thanks to Lindsay Charman, Peter Malone, Fred Harris and Steve MacKenzie whose articles and illustrations on the R.A.A.F. Vampires inspired this conversion kit.

R.A.A.F. D.H.  
VAMPIRE FB.31

\*\*\* FOR INDIVIDUAL AIRCRAFT MARKING, REFER TO LINDSAY CHARMAN'S EXCELLENT ARTICLE "LOCAL SINGLE SEAT VAMPIRES" IN A.P.M.A. MAGAZINE.



Ejector seat handle . Wire provided. Paint Black/yellow 

### SEAT COLOURS

- Seat frame - black
- Seat cushion - green
- Back cushion - brown
- Seat belts - brown/grey
- Belt buckle - silver

