

PAINTING TIPS

Roadway Fleet Truck Livery:

Assemble the chassis and chassis components including fuel tanks, battery box and 5th wheel and paint them Dark Blue. Paint the hood Dark Blue and the cab and bumper Orange. Paint underside of hood Flat Black. Detail the wheels with Orange inner spokes and a Steel outer ring. Assemble and Paint the engine Gold (before or after adding chrome parts). Paint interior tub, underside of cab roof, steering column, instrument panel and heater Light Green (more of a mint green). Paint seat upholstery Dark Brown. Paint side mirrors Black (leave faces Chrome).

Non Fleet Colors:

Assemble the chassis and chassis components including fuel tanks, battery box and 5th wheel and paint them Black. Paint the hood and cab color of choice. Paint underside of hood Flat Black. Assemble and Paint the engine Gold (before or after adding chrome parts). Paint interior tub, underside of cab roof, steering column, instrument panel and heater Light Green (more of a mint green). Paint seat upholstery Dark Brown.

Box Art Truck: Paint the hood and cab Red with a Gloss Black chassis and rear fenders. (Optional Paint Scheme: Red Cab with front area of hood that wraps around to the fenders painted Gloss Black. Front fenders and chassis painted Gloss Black as well.) Underside of hood Flat Black. Assemble and Paint the engine Gold (before or after adding chrome parts). Paint interior tub, underside of cab roof, steering column, instrument panel, and heater Light Green (more of a mint green). Paint seat upholstery Dark Brown.

Additional Notes: Fuel tanks, battery boxes and wheels were almost always painted to match the chassis, the cab or an accent color. Search online for further details.

PAINT COLORS

A	Black	L	Amber	W	Transparent Blue
B	Flat Black	M	Transparent Amber	X	Lt. (Mint) Green
C	Semi-Gloss Black	N	Red	Y	Dark Green
D	White	O	Transparent Red	Z	Gray
E	Flat White	P	Orange	FC	Fender Color
F	Silver	Q	Yellow	CC	Chassis Color
G	Chrome (Bright Silver)	R	Tan	TC	Truck Cab Color
H	Aluminum	S	Dark Brown	▲	Semi-Gloss
I	Steel	T	Lt. Blue	△	Gloss
J	Brass	U	Med. Blue	▲	Metallic
K	Gold	V	Dark Blue		

MACK®



DM600 TRACTOR



round2models.com

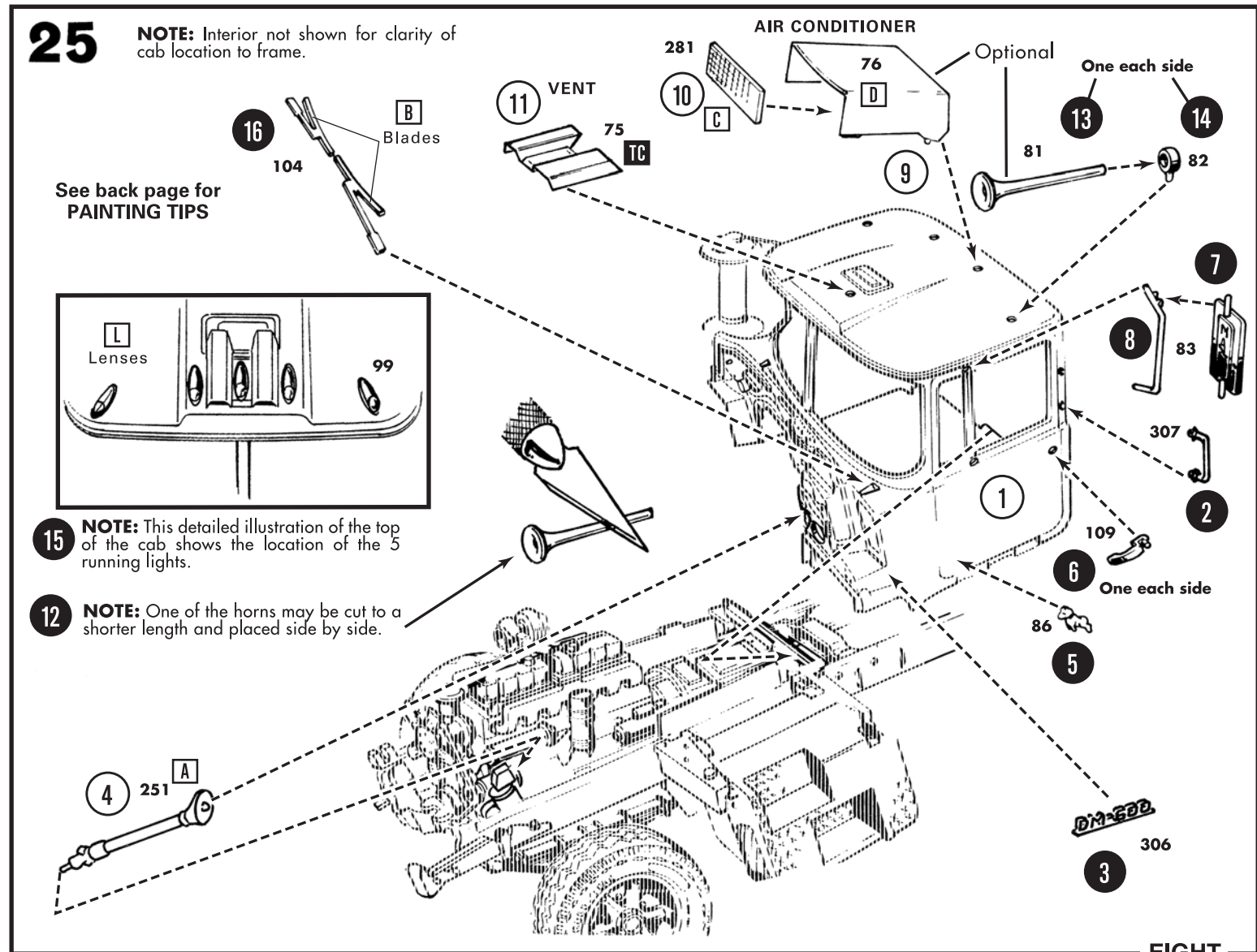
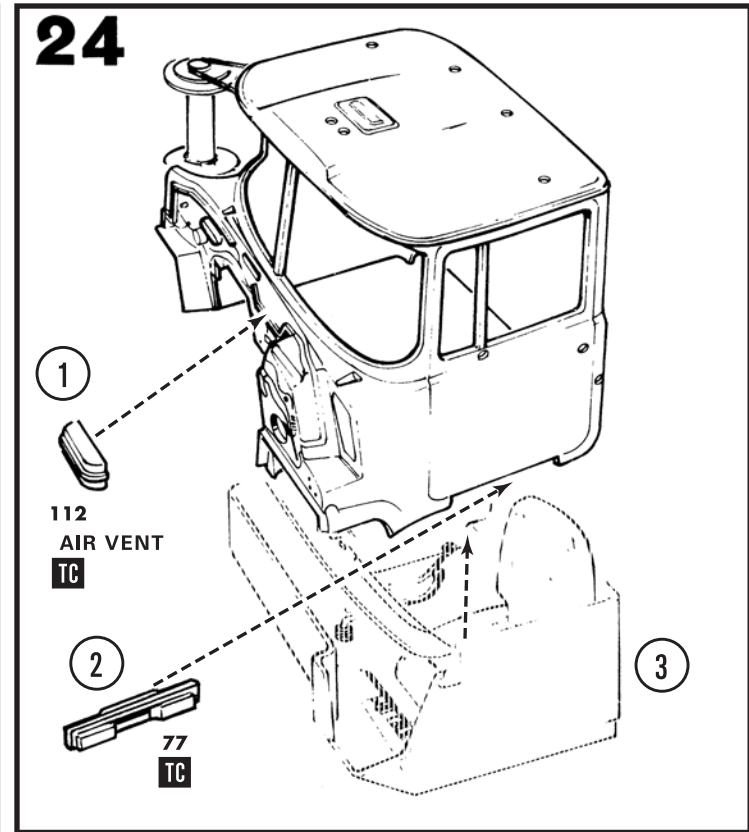
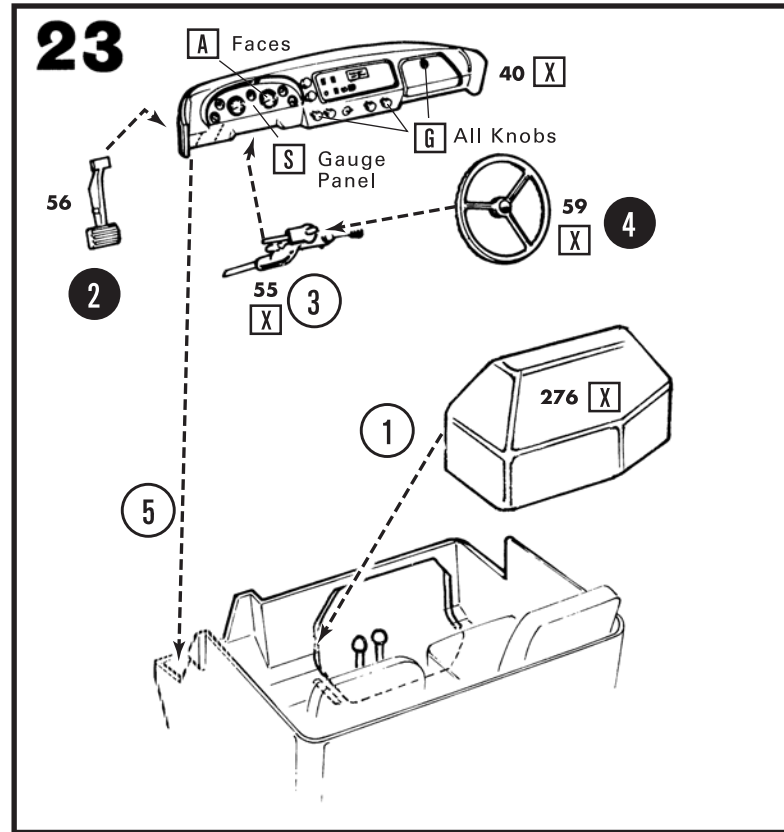
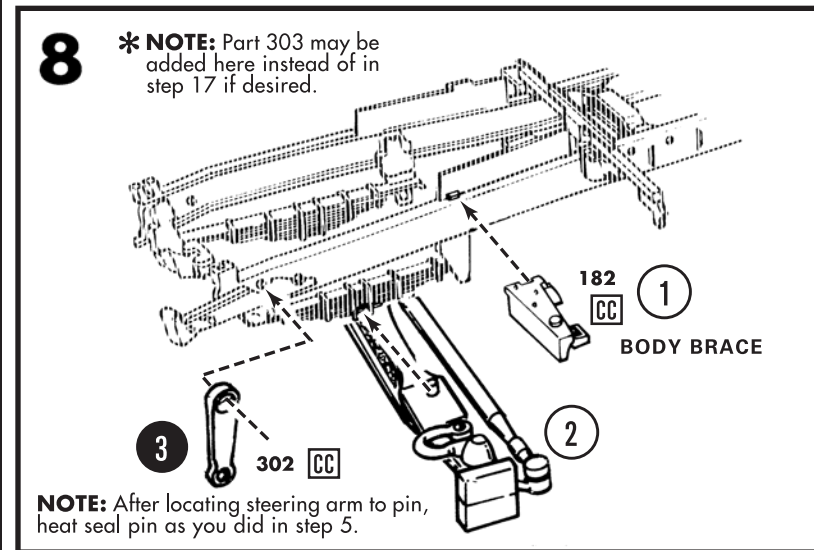
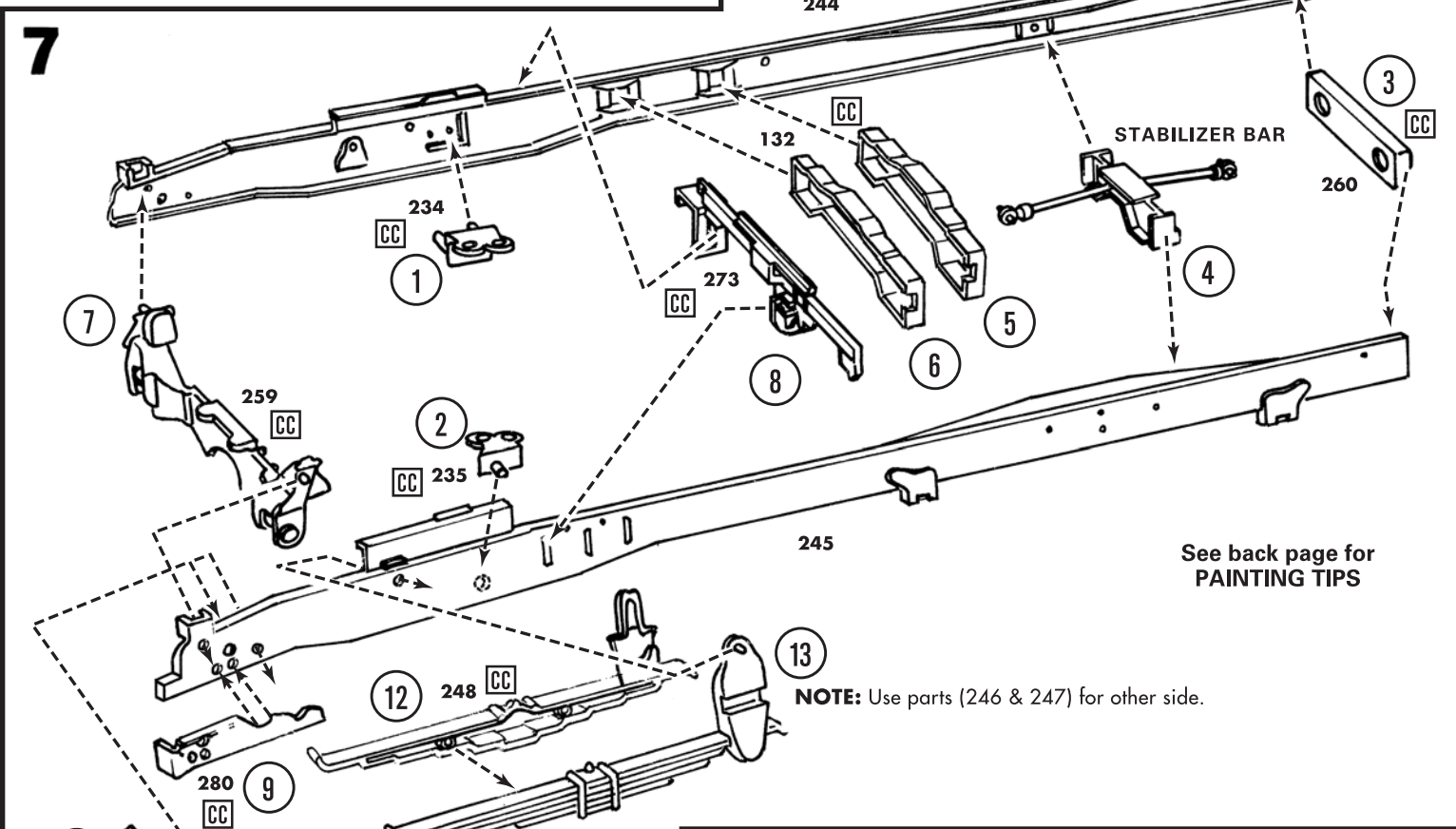
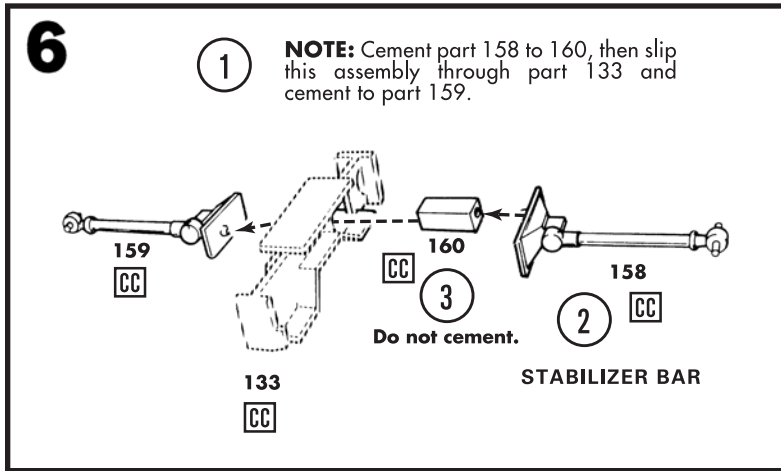
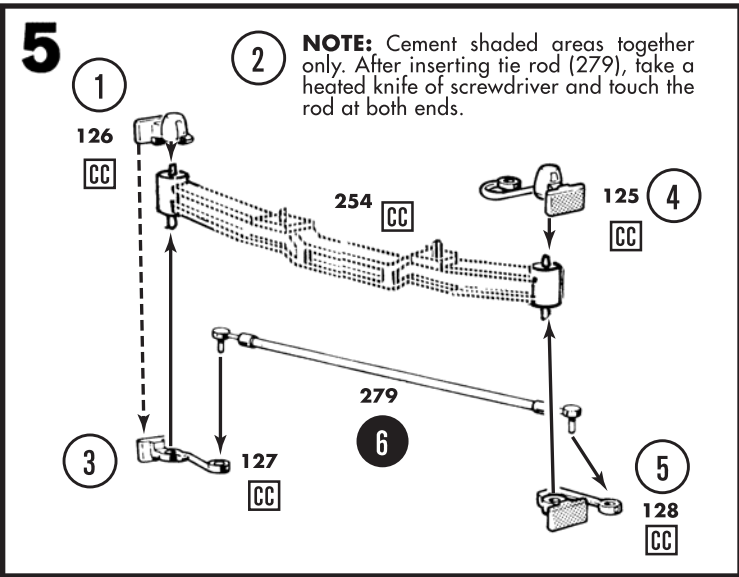


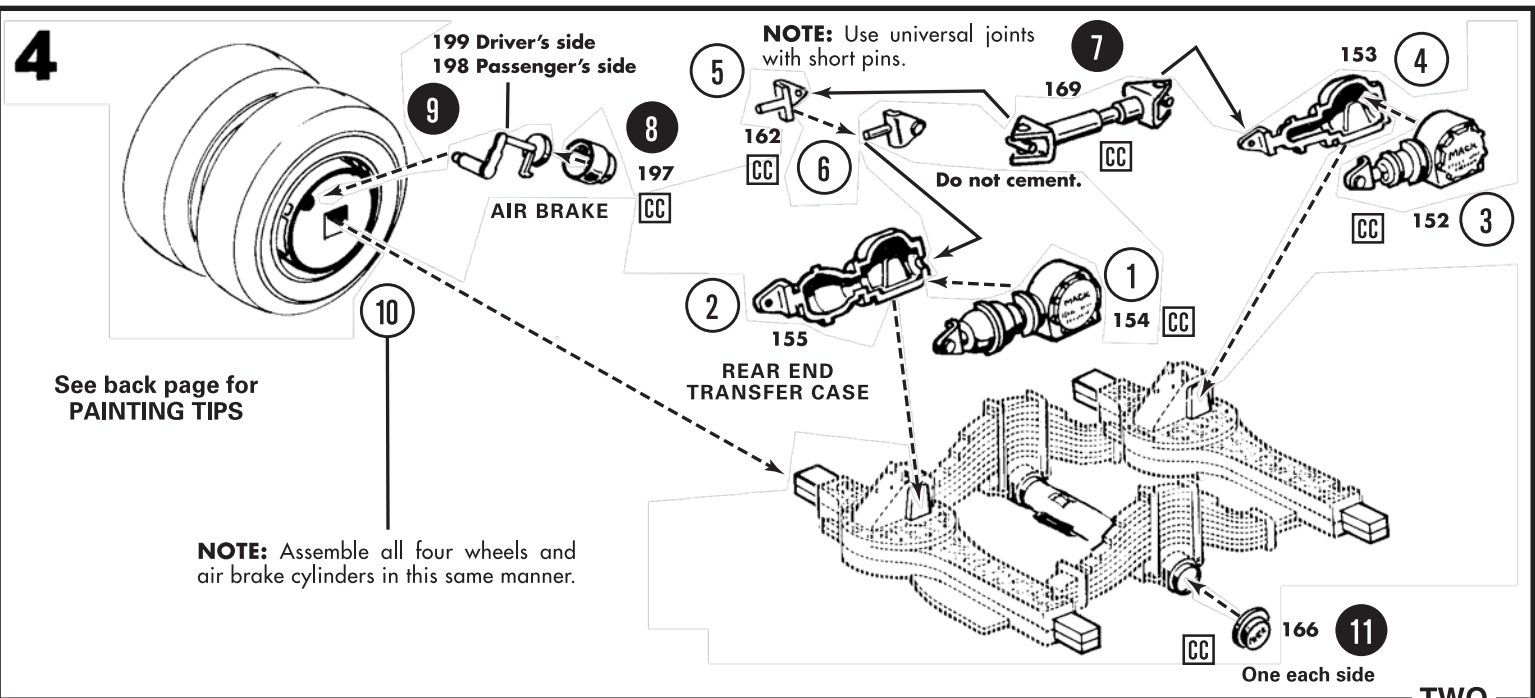
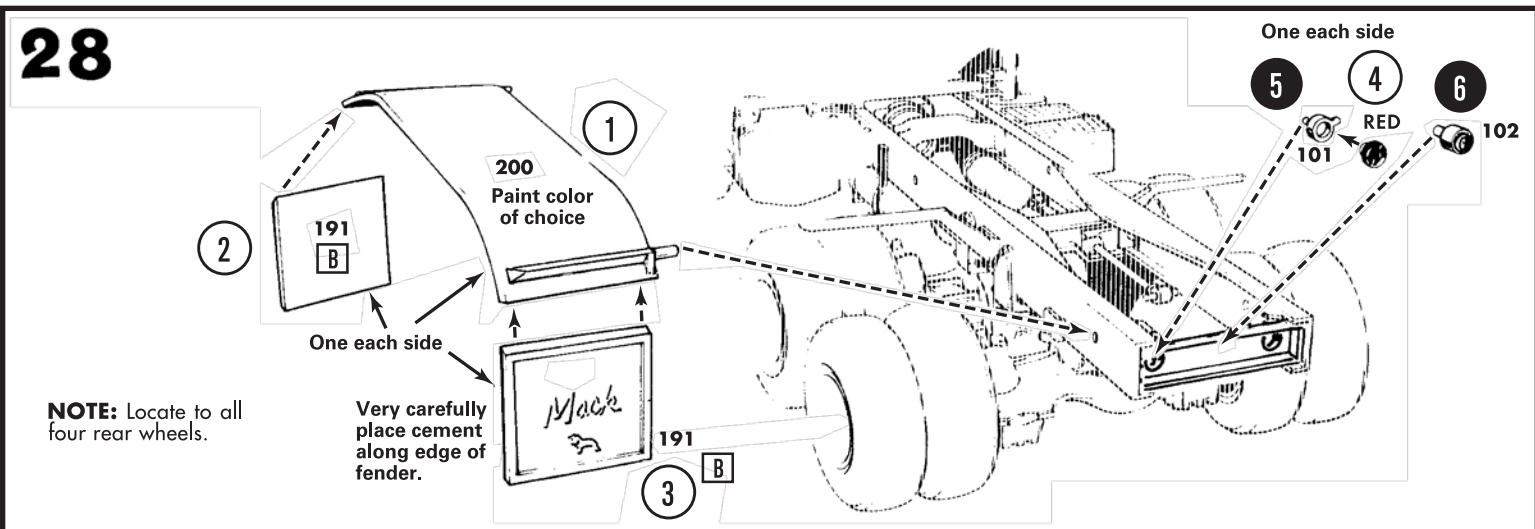
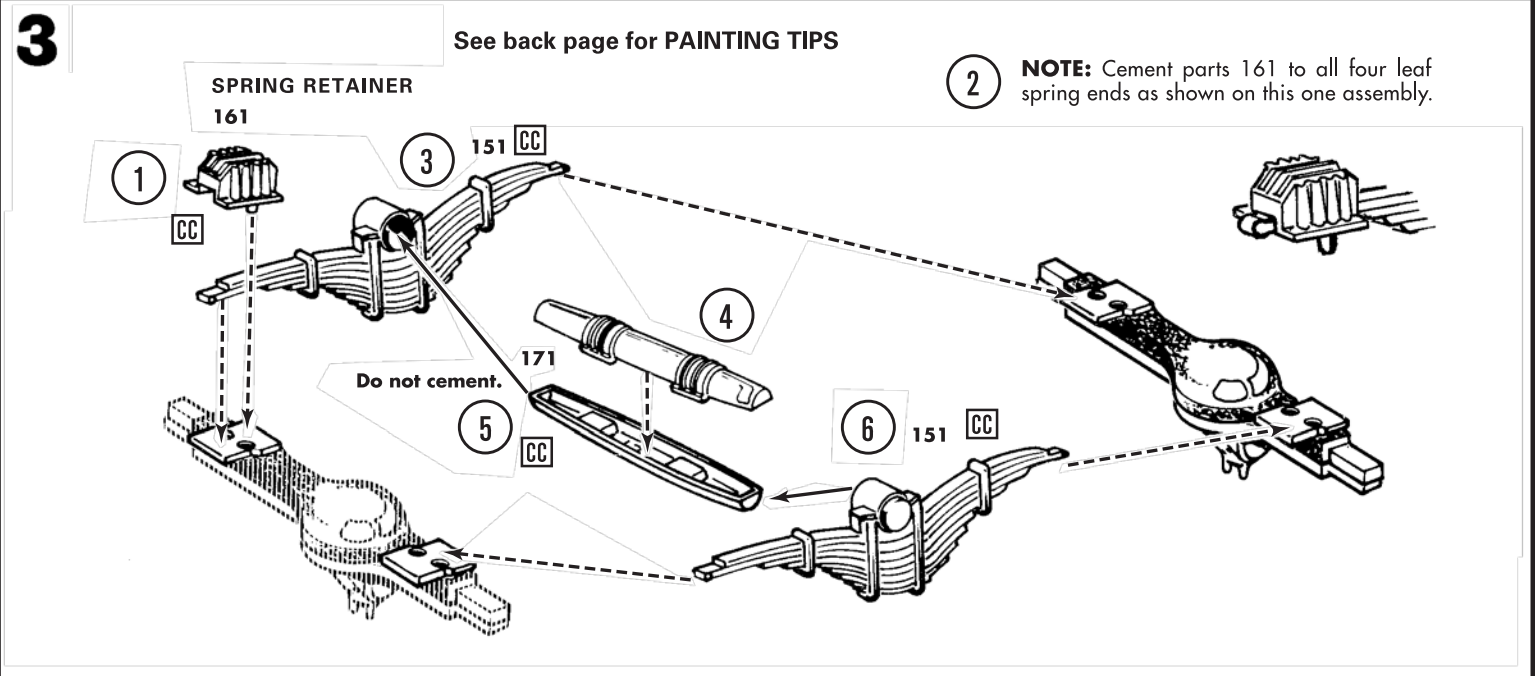
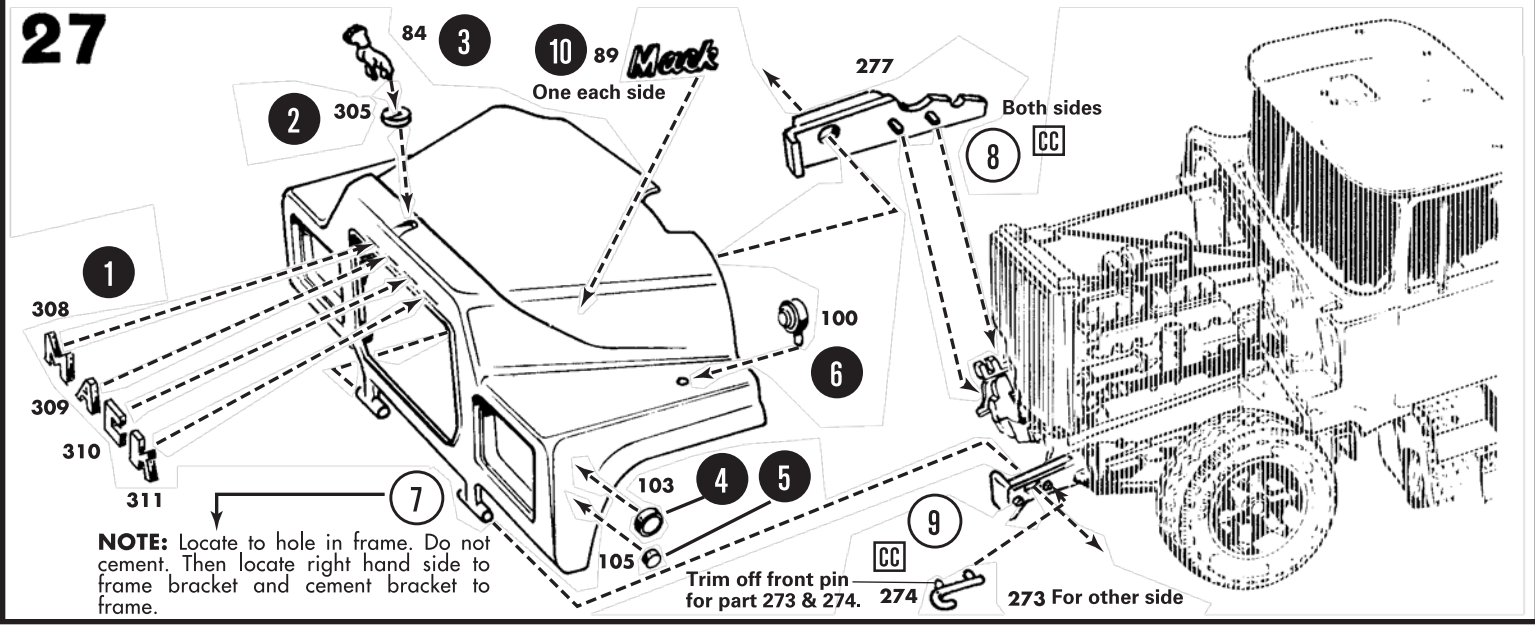
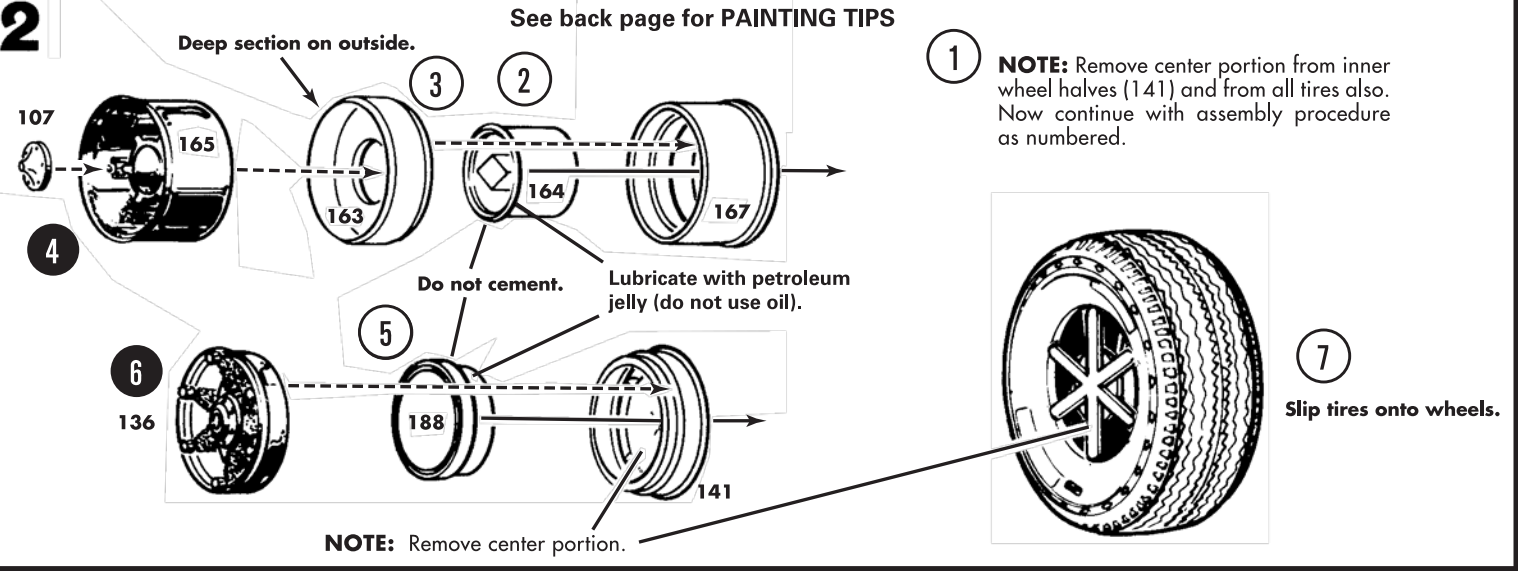
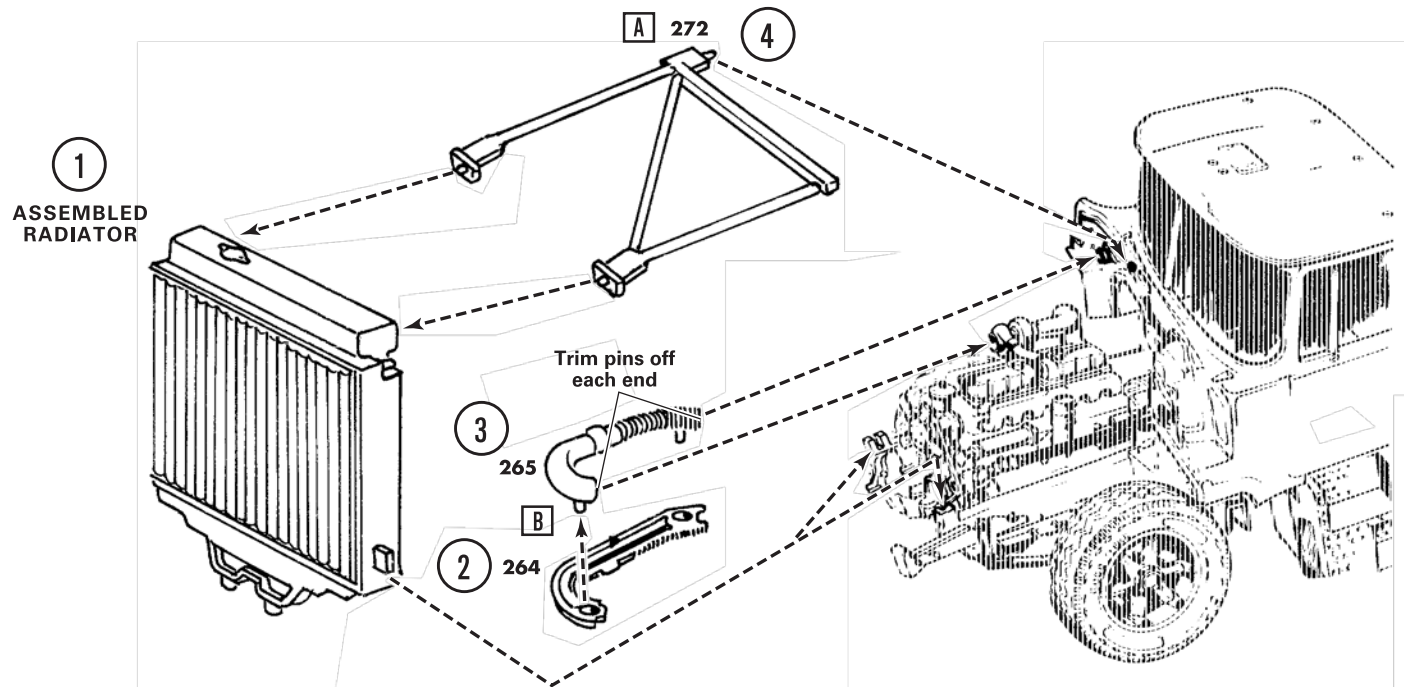
Round 2, LLC
4073 Meghan Beeler Court
South Bend, IN 46628



International Hobbycraft (UK) Ltd.
21 St. Thomas Street
Bristol BS1 6JS England









MACK DM 600 SPECIFICATIONS

ENGINE: ENDT 673, 6 Cylinder

BORE & STROKE: 4 7/8 x 6

DISPLACEMENT, Cu.In: 672

BRAKE H.P., R.P.M.: 225 at 2100

MAXIMUM TORQUE, R.P.M.: 653 at 1500

FIRING ORDER: 1-5-3-6-2-4

COMPRESSION RATIO: 16.11:1

WHEELBASE: 162"

TRANSMISSION: 5 Speed Maxitorque

CLUTCH: Mack CL 68

FRONT AXLE: Mack Fa-534
Reversed - Elliot
Drop Forged I-Beam.

BOGIES: SWDL 56 Carrier
CRPDC 92 & CRD 93

FUEL TANKS: 65 Gal., L.H., Aluminum,
Rect., 2 step.
40 Gal., R.H., Aluminum,
Rect., Step.

TIRE SIZES: 11:00 - 20

RIMS: Cast spoke chrome.

REAR BRAKES - Timken 15 x 6, (377) (Stop Master).

FRONT BRAKES - 16 1/4 x 3" (204) Air Brakes.

IMPORTANT: READ THIS FIRST

You are about to construct the Mack DM600. Before you begin building, look over and study the instruction sheet carefully. Check parts with the illustrations and numbers; test fitting all components prior to assembly. Scrape the plating and/or paint from cementing surfaces to insure strong bonding.

Some parts may have to be trimmed to fit or for appearance because of excess plastic (or flash). Follow the numbering sequence as shown. Use only cement and paints designed for

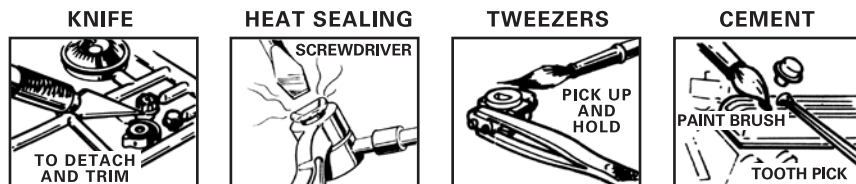
styrene plastic. Other materials will damage your model.

Clear plastic parts (glass) are indicated as: (clear).

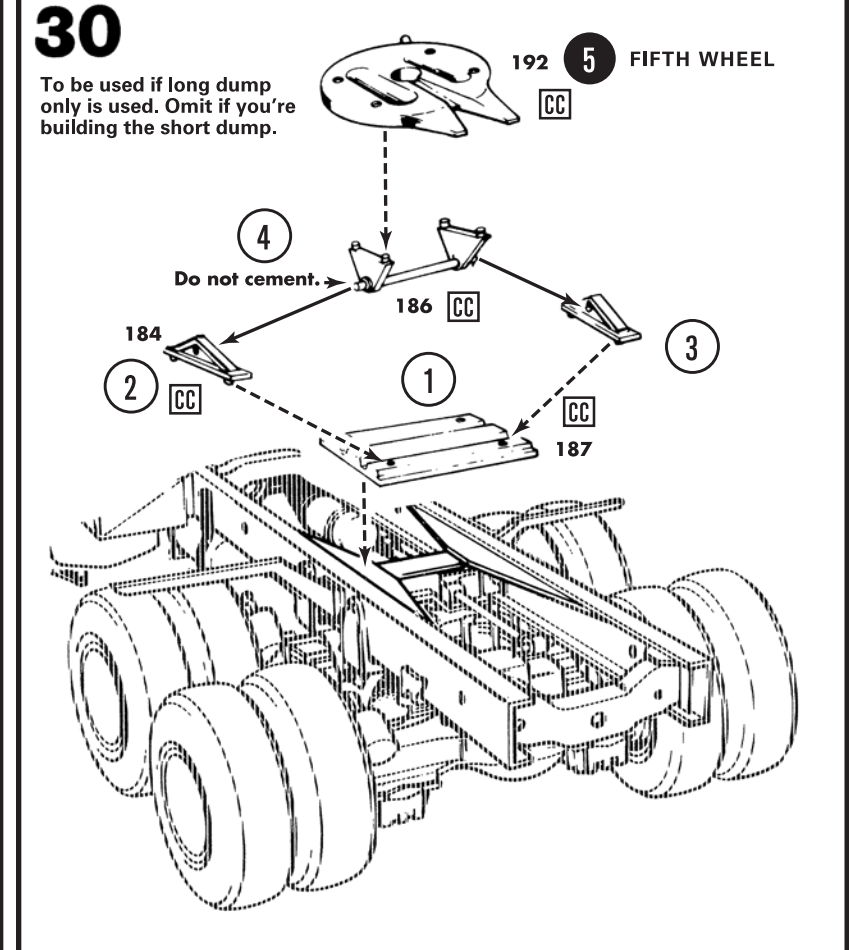
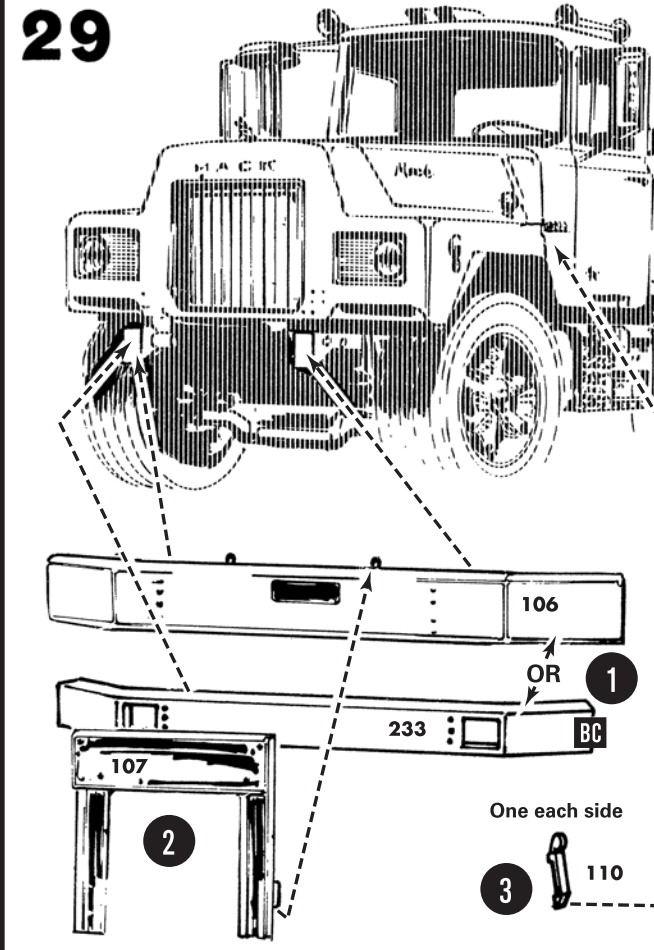
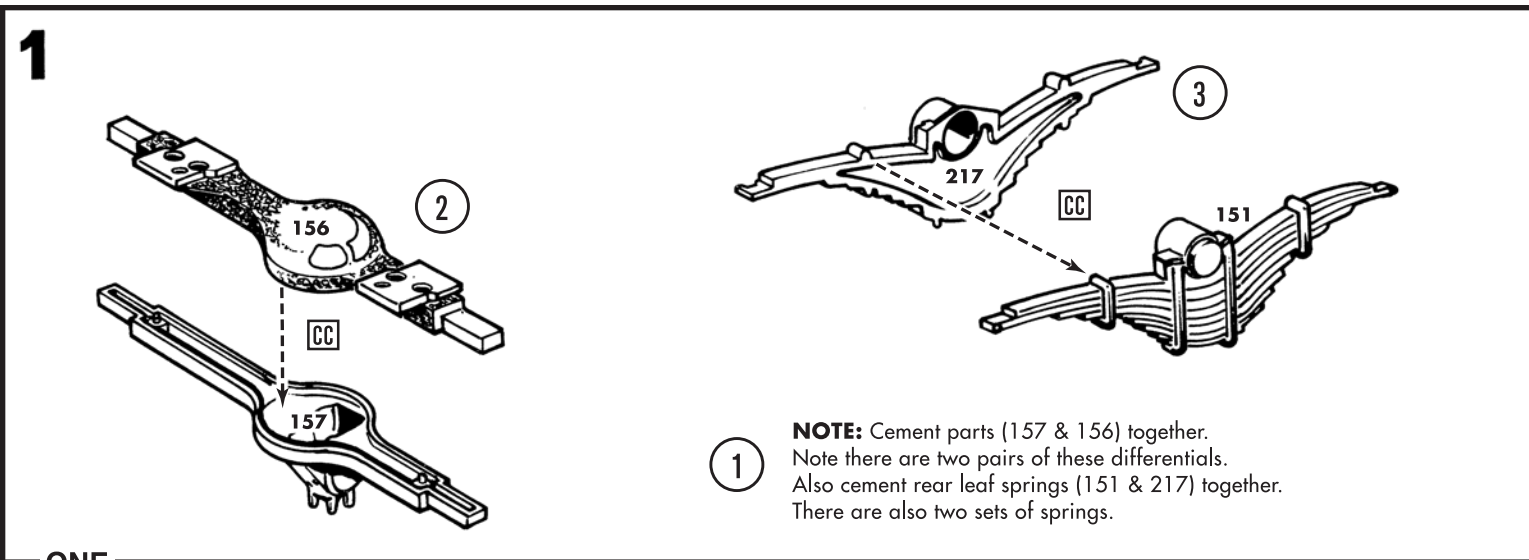
Cement all parts together unless indicated by (do not cement).

When painting parts for assemblies, leave those parts on runners or hold with a small clamp or "alligator" clip. Allow all painted parts to dry completely before assembling. See back page for more painting details. Remember patience while building is your best tool. Note: this kit includes extra parts.

GET YOUR TOOLS READY

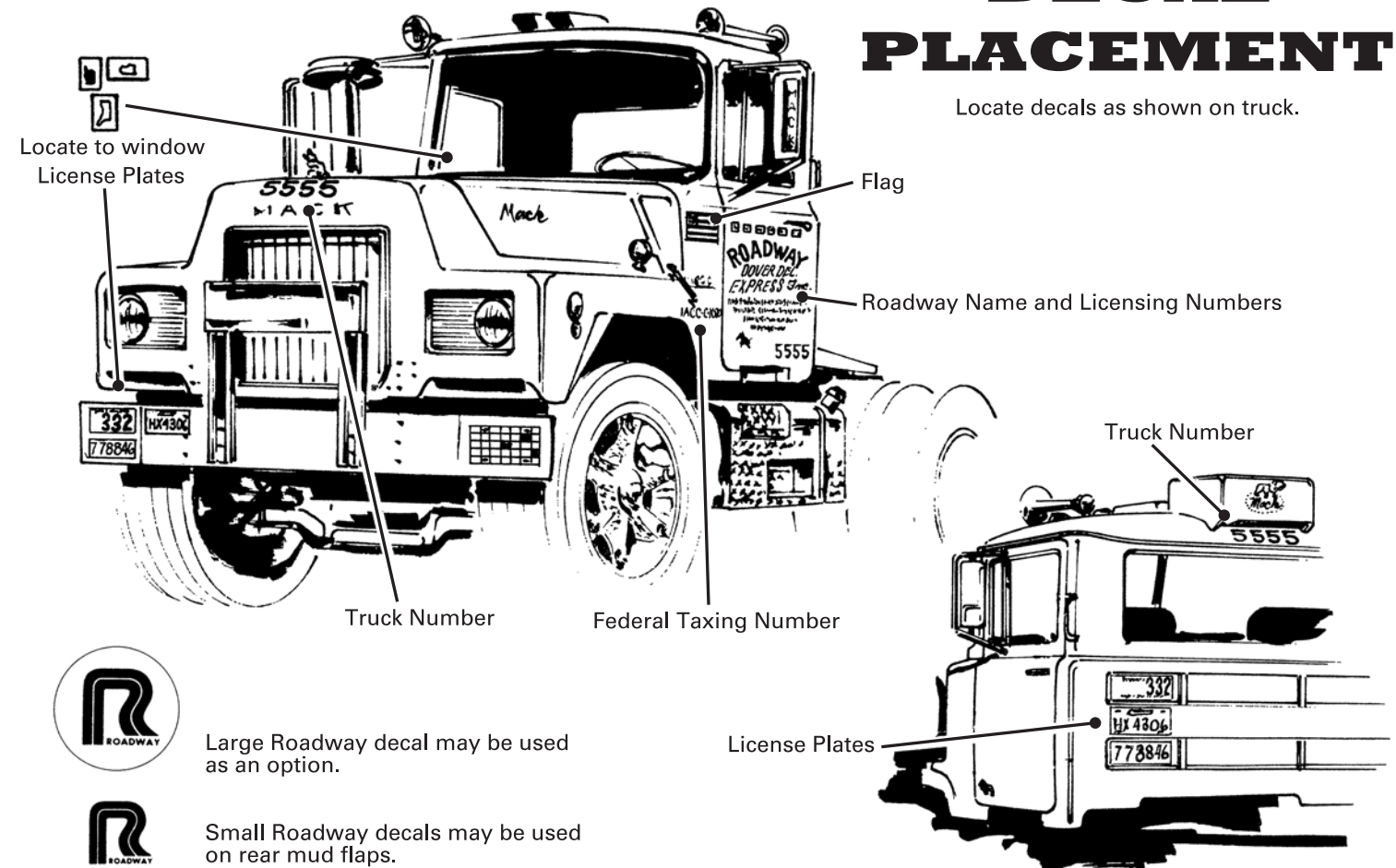


- 27 PLATED PARTS
- 19 NON PLATED PARTS
- 201 PART NUMBERS

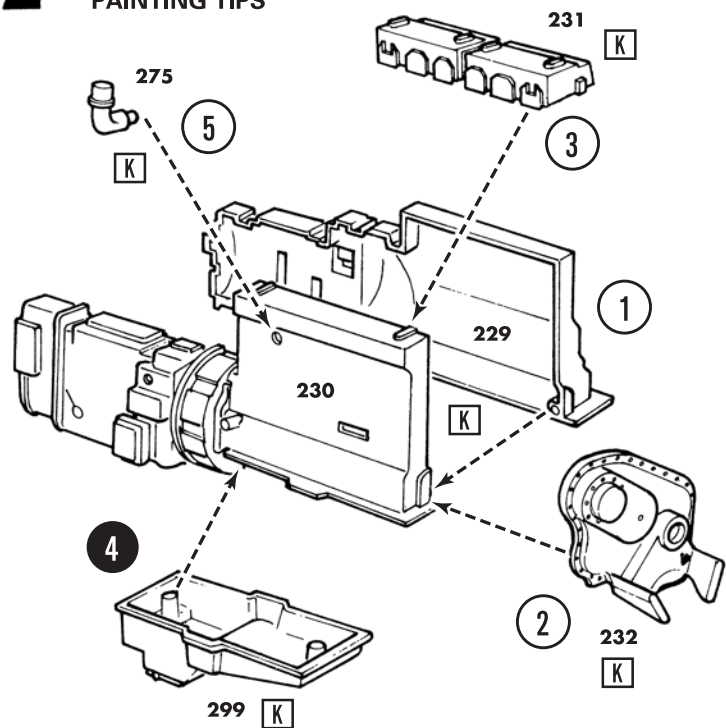


DECAL PLACEMENT

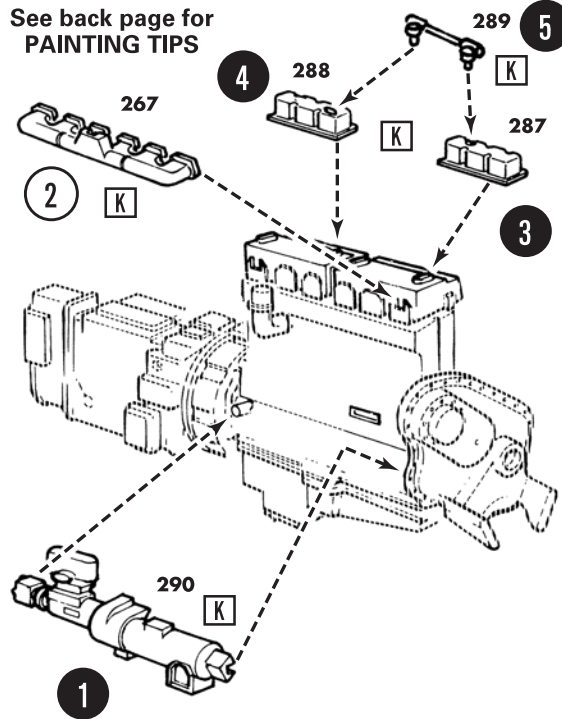
Locate decals as shown on truck.



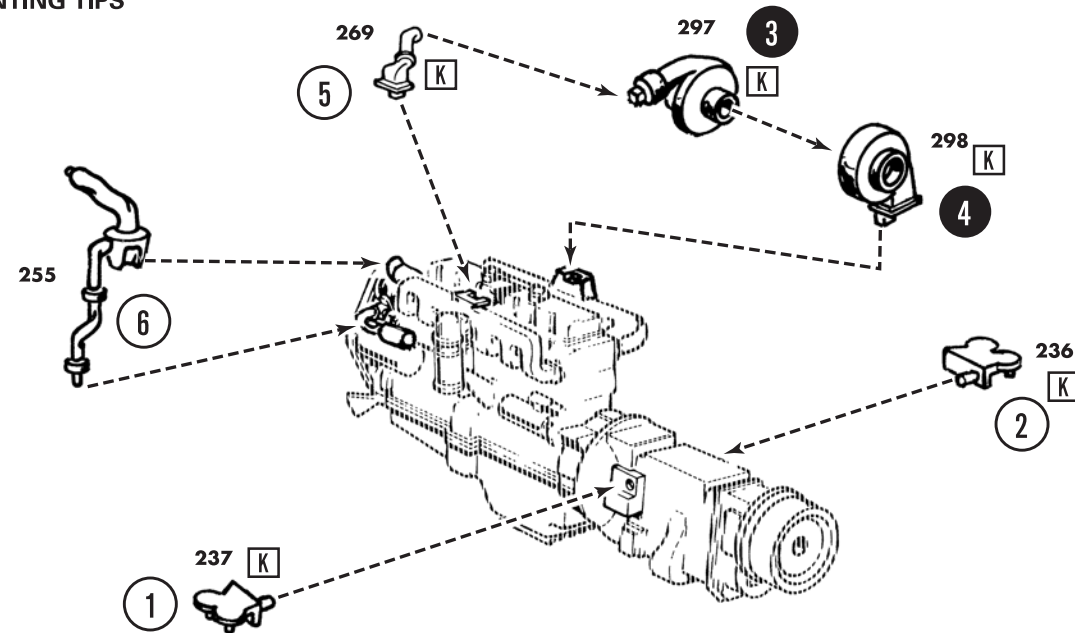
12 See back page for PAINTING TIPS



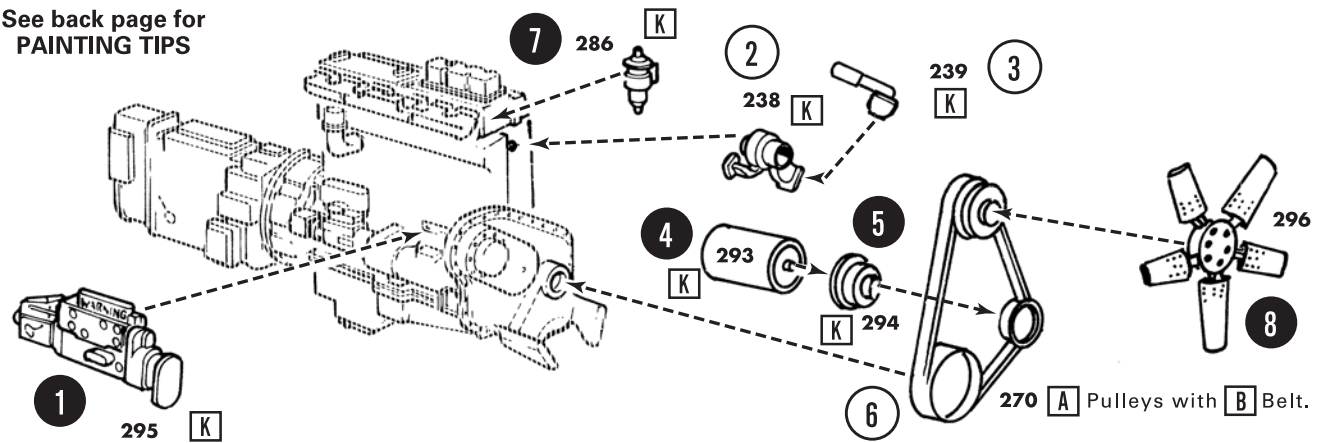
13 See back page for PAINTING TIPS



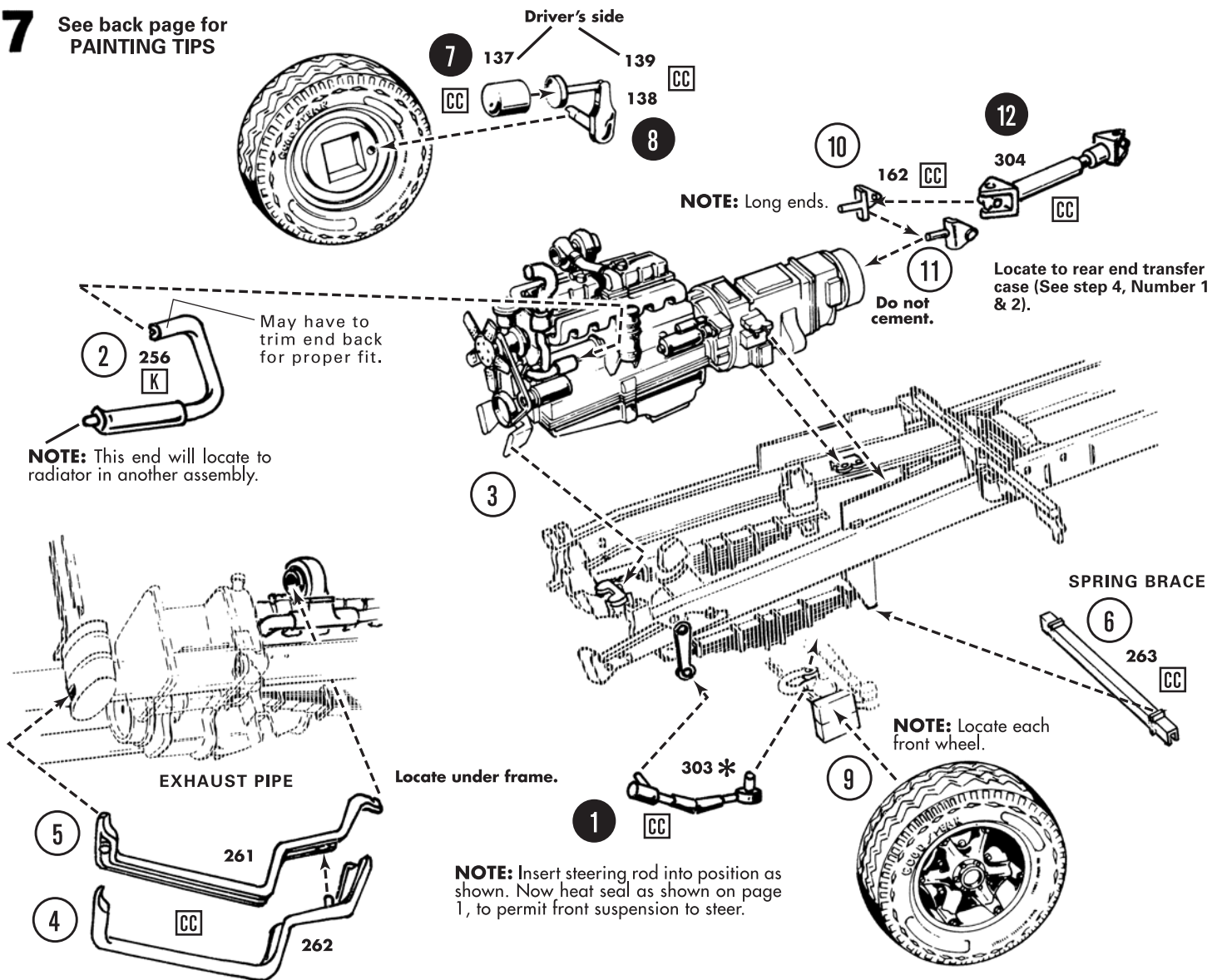
16 See back page for PAINTING TIPS



14 See back page for PAINTING TIPS



17 See back page for PAINTING TIPS



15 See back page for PAINTING TIPS

