

AUSTRALIAN ARMY
M113A1 MRV

澳洲陸軍M113A1中型偵察車



During the 1960' s, the Royal Australian Armored Corps (RAAC) acquired 15 British produced FV601 Alvis Saladin armored vehicles to be incorporated into a training unit. By the 1970' s, the turrets of these FV601's were removed and adapted to the hulls of M113A1's. These M113's were re-designated M113 FSV' s (Fire Support Vehicles). Among these FSV's, eight were shipped to Vietnam to provide fire support after the withdrawal of the Centurion tank in August of 1971. In response to the Vietnamization Program, the 1st Australian task force ended their duty and gradually departed Vietnam starting in October of 1971.

During its short tenure in Southeast Asia, the FSV saw no action in combat. However, the turreted M113's underwent further development beginning in 1972. As a result, a turret was borrowed from the FV101 Scorpion and fitted to the hull of the FSV. This provided the M113 FSV with night fighting capabilities as well as a BV (boiling vessel)-a water heater for making tea.

Main armament consists of one 76mm gun which fires the same projectile as that of the Saladin. To lower its center of gravity, a lightened barrel and lowered profile turret were incorporated. Foam-filled metal chambers and vanes were added to either side of the hull for stable amphibious capabilities. The drivers hatch was modified to rotate horizontally instead of opening upwards to prevent interference with the traversing turret. Production of the Scorpion turreted M113 began in 1978, forty-nine vehicles were produced including the prototype. All and were designated M113 MRV (Medium Reconnaissance Vehicle) to differentiate from the Saladin turreted M113s. The MRVs were issued to the Cavalry units and served until its retirement in 1996.

1960年代、オーストラリア陸軍(RAAC)は15台のイギリス製FV601アルビスサラディン装甲車を15台輸入し、訓練部隊に導入しました。1970年、これらのサラディン装甲車の砲塔は取り外され、M113A1装甲車の車体に再装備され、M113火力支援車(FSV)と称されました。これらのM113 FSVのうち8両は、1971年8月、センチュリオン戦車がベトナムから撤退した後、火力支援車両の不足によって生じたギャップを埋めるため、ベトナムに出荷されました。「ベトナム化」政策の影響を受け、1971年10月、ベトナム任務部隊(第1オーストラリア任務部隊)におけるオーストラリアの作戦は終了し、ベトナムから部隊が徐々に撤退しました。

M113 FSVはベトナムでの短い就役期間中で実戦記録はありませんでしたが、オーストラリア陸軍では砲塔を搭載したM113が火力支援車両の主力として継続的に開発が行われました。FSVの第2次開発は1972年に始まり、FV101スコピオン戦車の砲塔を搭載することが決定したため、M113 FSVもスコピオン戦車と同じ、夜間戦闘能力と紅茶を入れるための給湯器を備えていました。

主武装はサラディン装甲車と同じ砲弾を使用する76mm主砲ですが、軽量化された砲身と砲塔輪郭により車両の重心が低くなりました。安定した水陸両用能力のために、泡で満たされた浮力補助具が車体の前面と側面に追加されました。その他の変更点として、ドライバーのハッチは、旋回する砲塔との干渉を防ぐために、上向きに開くのではなく、水平に回転するように変更されています。スコピオン砲塔を搭載したM113 FSVの量産は、1978年に開始され、試作機を含めて49両が生産されました。サラディンの砲塔を備えたM113と区別するために、すべてがM113 MRV(Medium Reconnaissance Vehicle)と命名されました。M113 MRVは偵察車として騎兵隊に配属され、1996年までオーストラリア陸軍で使用され続けました。

1960年代，澳洲陸軍引進十五輛由英國生產的FV601薩拉丁裝甲車，編入騎兵單位中用於訓練。1970年間，這批薩拉丁裝甲車的砲塔被拆下，改裝在M113A1裝甲車車體之上，被稱作M113火力支援車(FSV)。1971年8月，其中八輛M113 FSV被運往越南，填補百夫長戰車撤離越南後，缺乏火力支援車輛所產生的缺口。受到「越戰越南化」政策的影響，1971年10月，澳洲在越南特遣部隊的運作結束，部隊陸續撤離越南。

在越南短暫的服役期間內M113 FSV並沒有交戰的紀錄，但在澳洲陸軍中，以M113車體搭載火砲做為火力支援車輛，卻得到了持續的發展。第二批FSV的發展開始於1972年，選擇搭載FV101蠍式(Scorpion)戰車的砲塔，因此讓M113 FSV也擁有了與蠍式戰車相同的夜戰能力與可供沖泡紅茶的熱水器。主要的武裝為一門76毫米主砲，與薩拉丁裝甲車使用相同的砲彈，但更為輕量化的砲身與低矮的砲塔輪廓降低了車輛的重心。車體前方與兩側增加了內部填充泡沫的浮力輔助裝置，讓FSV在渡河時車身保持穩定。其他的改變還有駕駛的艙門開啟方式改為朝水平方向旋轉，藉此避免影響砲塔的操作。

搭載蠍式戰車砲塔的M113 FSV在1978年獲准量產，連同原型車共生產了49輛。為了與薩拉丁砲塔的車輛區隔，後來被改稱為M113 中型偵察車(MRV)，M113 MRV被配發到騎兵單位中做為偵察車輛使用，在澳洲陸軍中持續服役至1996年為止。

Illustration:圖示說明



Method For Applying Decals:

1. Clean Model Surface With Wet Cloth.
2. Cut Out Of Decal Sheet And Dip Them In Warm Water For 15 Seconds.
3. Place it on proper position on model.
4. Slide off base paper leaving decals On Model With Wet Finger Tip.
5. Move Decals To Exact Position, Push Out Excess Water Under Decal With Soft Cotton Cloth.
6. When Decals Get Dry Then Complete.

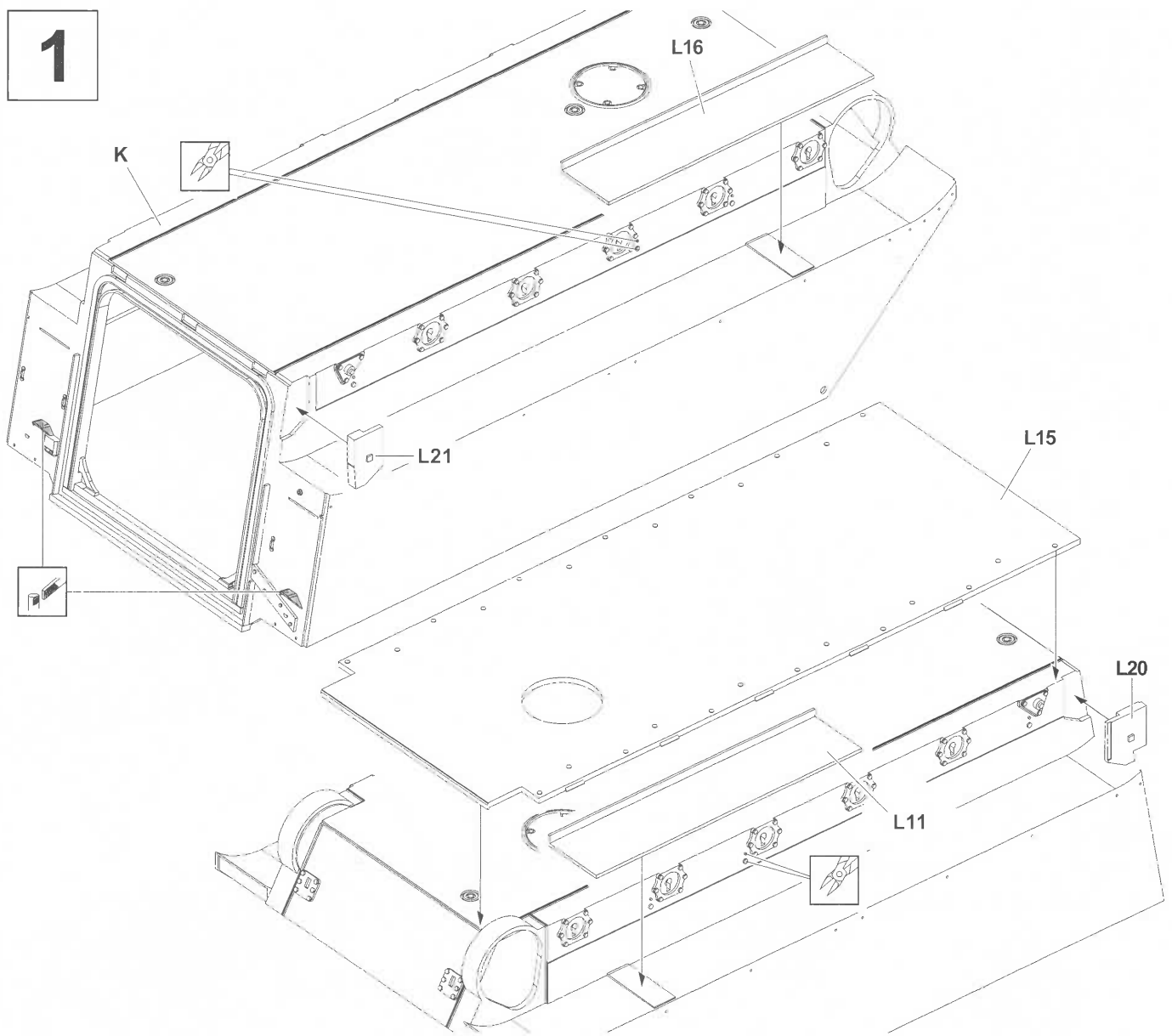
水貼紙使用說明:

- 1.將模型表面擦乾淨
- 2.將貼紙剪下泡入溫水中浸泡約15秒
- 3.將泡濕之貼紙取出置於欲貼處旁
- 4.用指尖輕推貼紙表面使其滑出底紙
- 5.將貼紙調整至適當位置並輕擦拭水份
- 6.待其自然乾燥後即完成

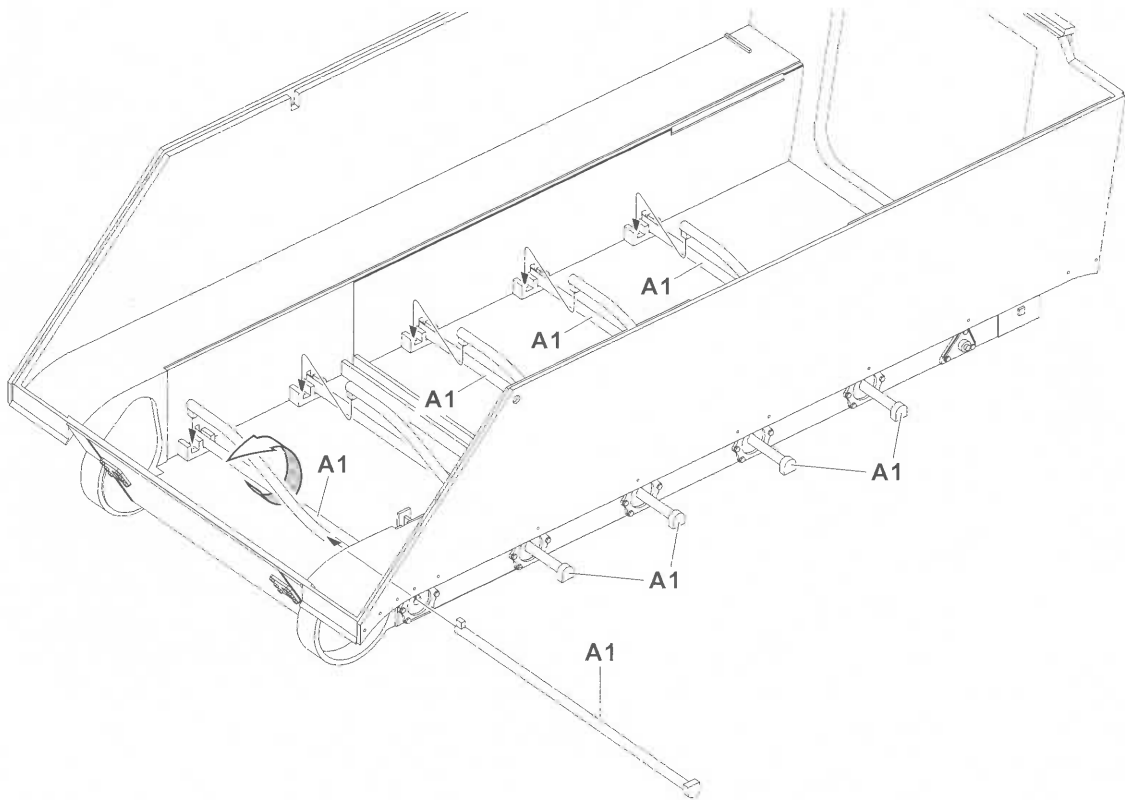
Color list: 塗料表

Color	Brand	GSI Creos			Humbrol	AV Vallejo	Lifecolor
		Hobby Color	Mr.Color	Mr.Color Spray			
Bright blue	寶藍	H15	C65	S65	14	70841	LC60
Black	黑	H2	C2	S2	21	70861	LC52
Brown FS30219	褐	H310	C310		119	71125	UA015
Clear orange	透明橘	H92	C49	S49		70956	
Duck egg green	鴨蛋綠	H74	C26		23	71009	UA96
Flat black FS37038	消光黑	H12	C33	S33	33	70950	LC02
Flat red	消光紅	H13			153	70957	LC06
Interior green FS34151	機艙綠		C351		158		UA004
Olive drab FS34087	橄欖褐	H304	C304		155	71043	UA03
Sail color	帆布	H85	C45		28	72149	UA099
Silver	銀	H8	C8	S8	11	70997	LC74
Steel	黑鐵	H18	C28	S28	53	77712	LC76
Tire black	輪胎黑	H77	C137		85	70950	LC02
Wood brown	木棕	H37	C43		186	70876	UA85
Yellow	黃	H4	C4	S4	69	70953	LC53

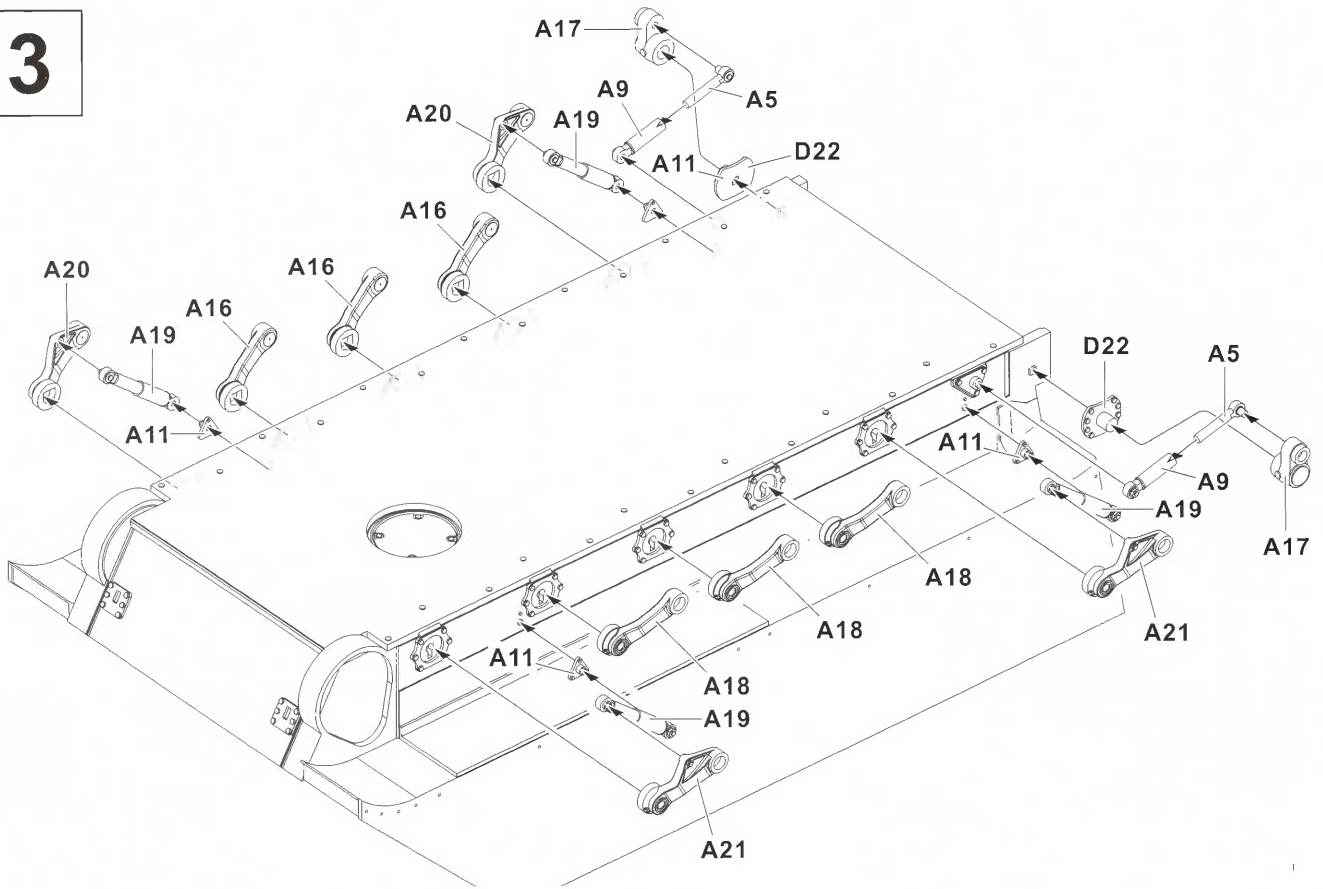
1



2



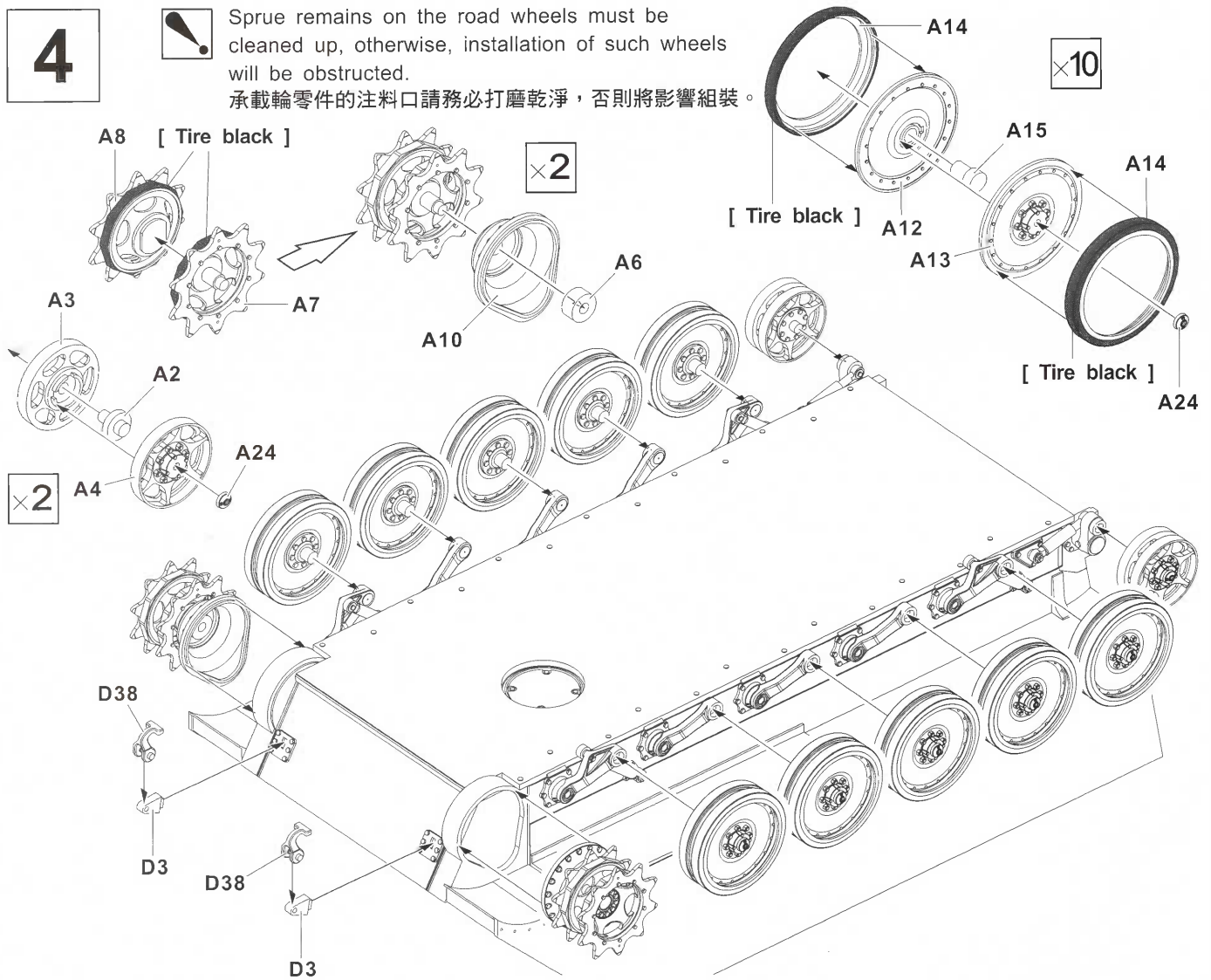
3



4



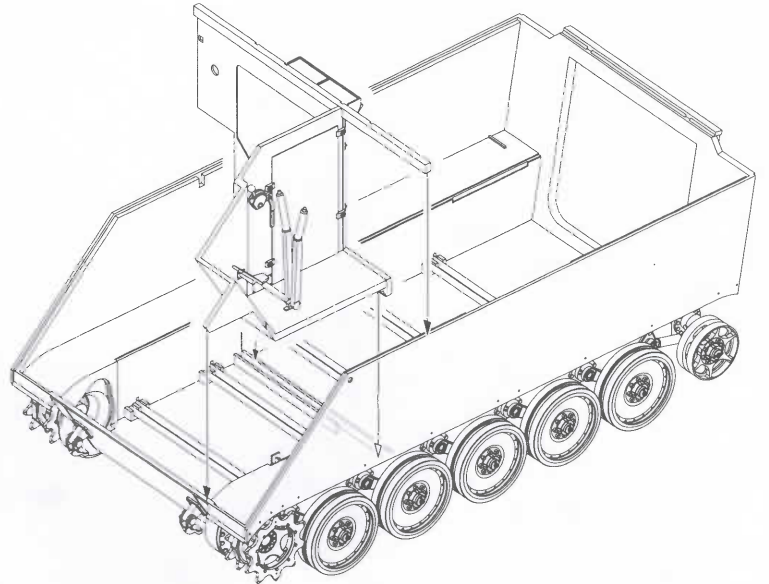
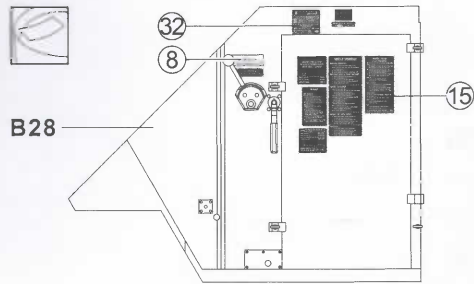
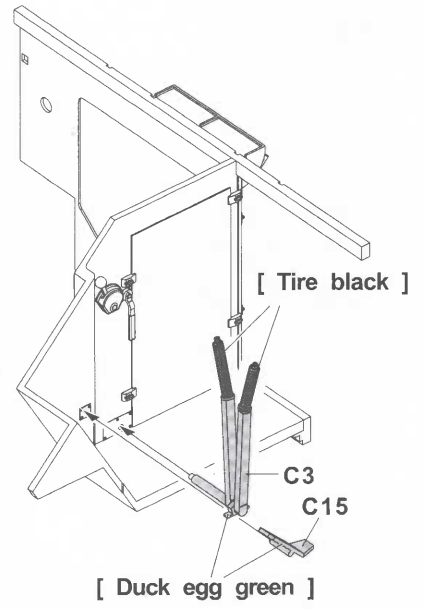
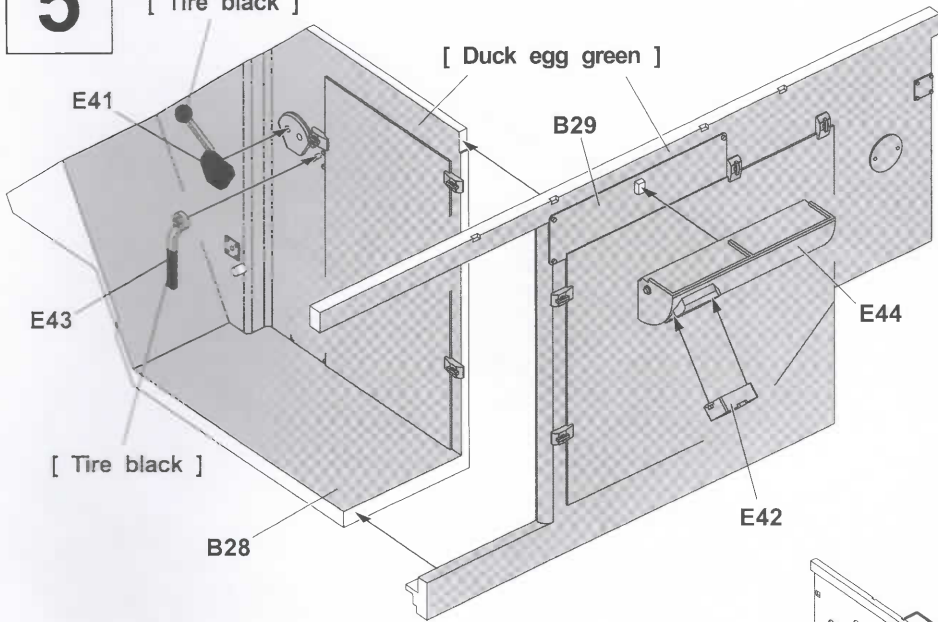
Sprue remains on the road wheels must be cleaned up, otherwise, installation of such wheels will be obstructed.
 承載輪零件的注料口請務必打磨乾淨，否則將影響組裝。



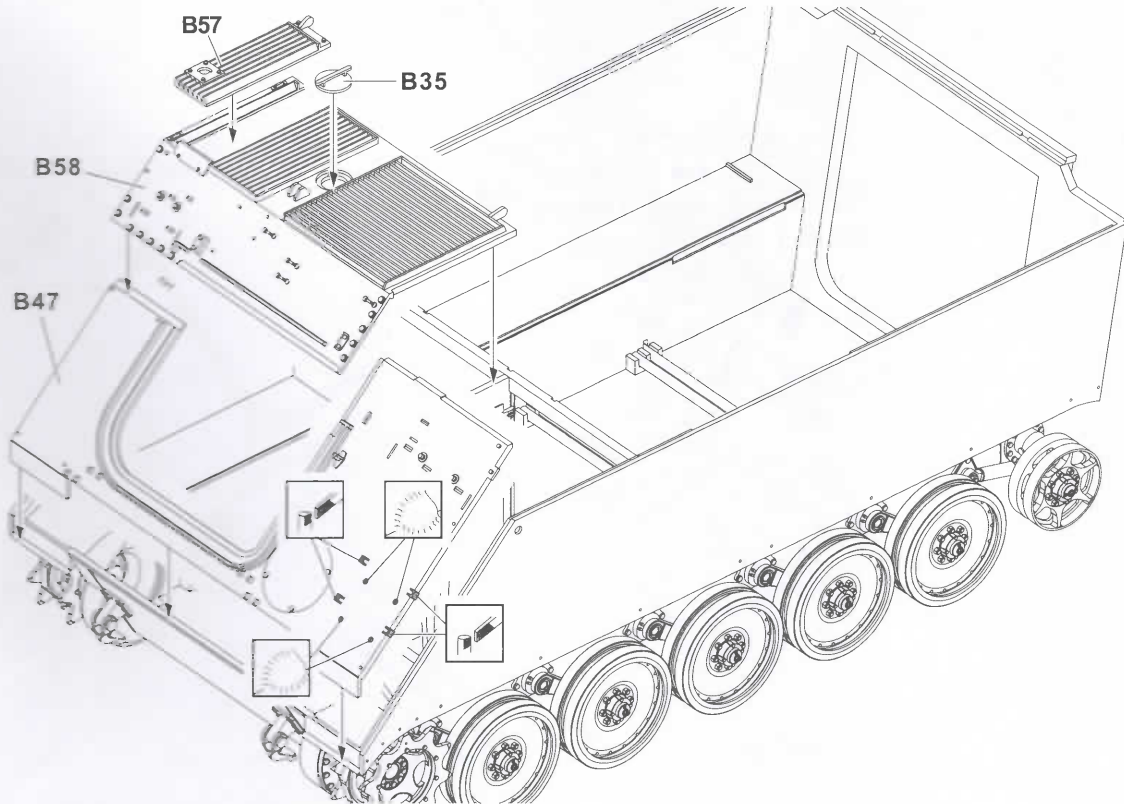
5

[Tire black]

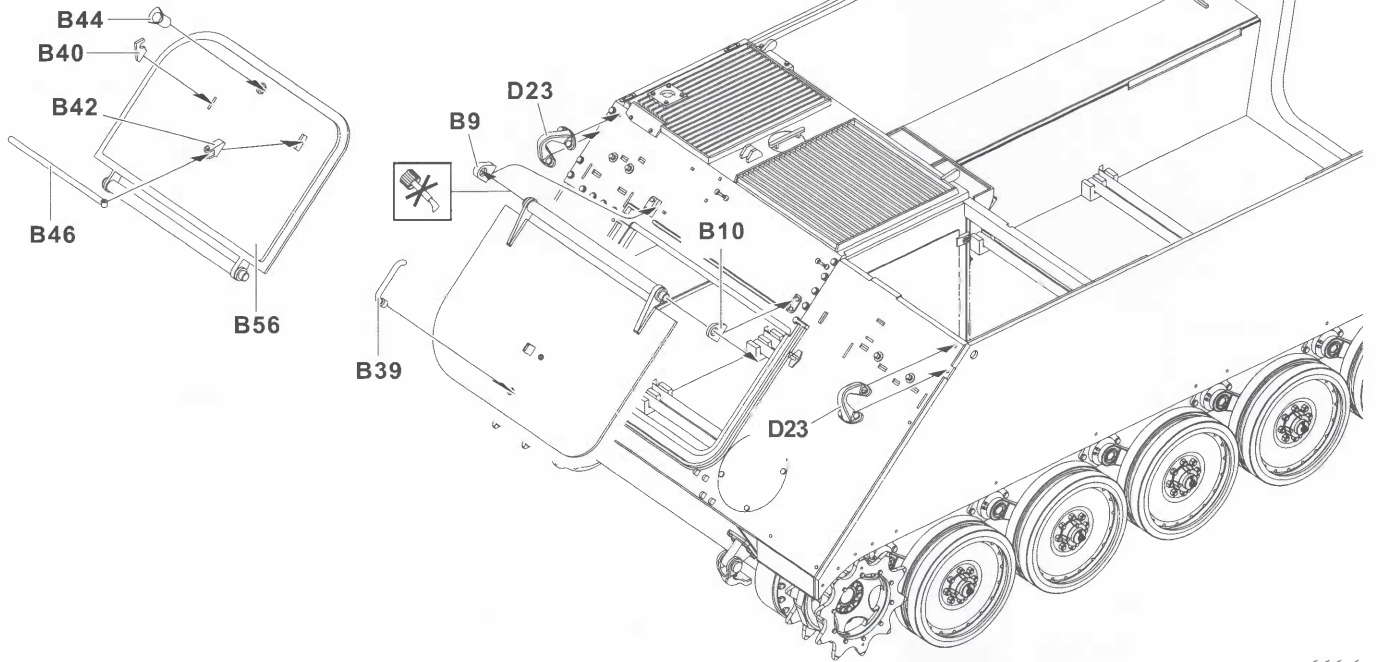
[Duck egg green]



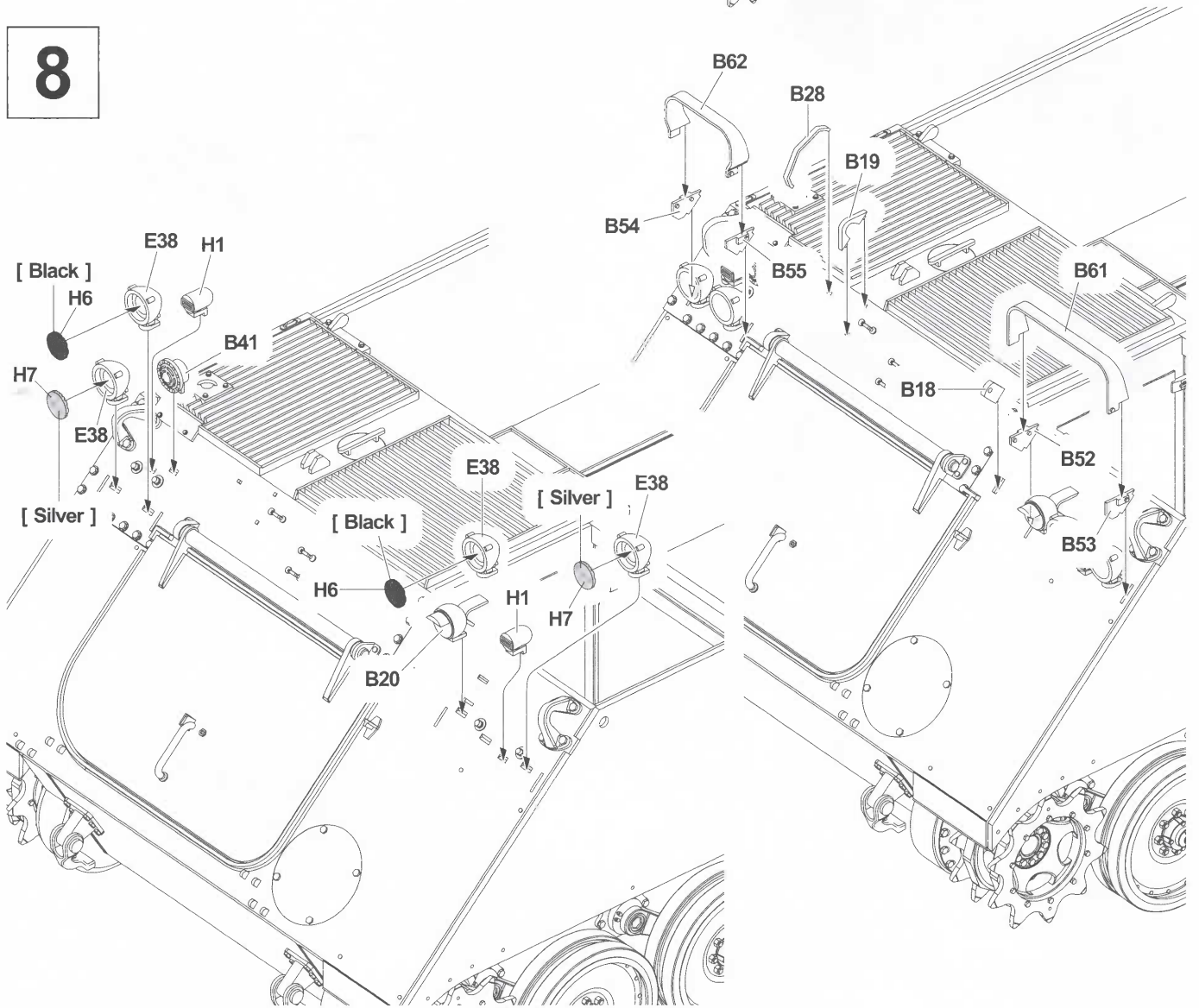
6



7

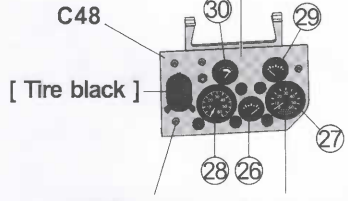


8



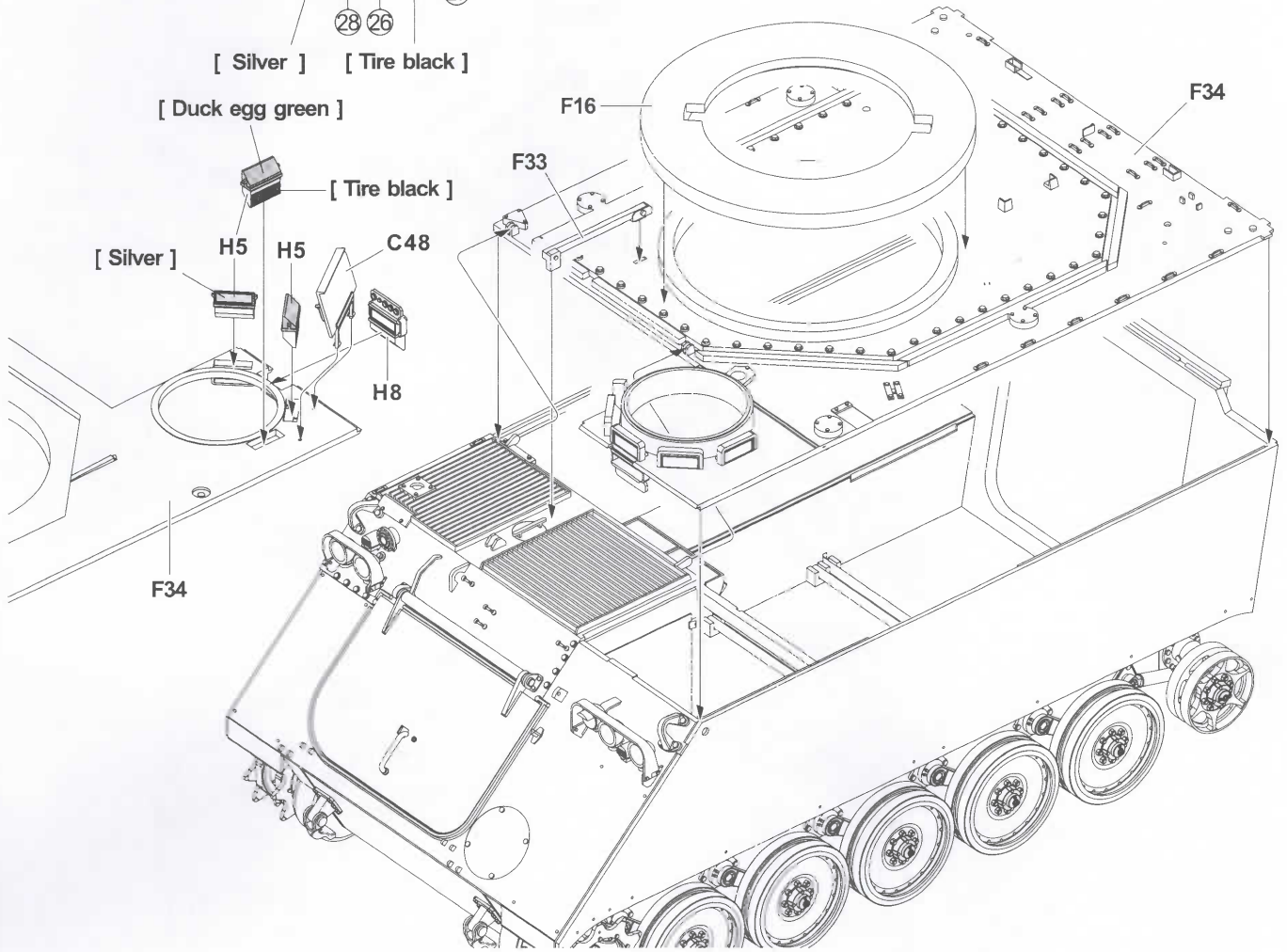
9

[Duck egg green]

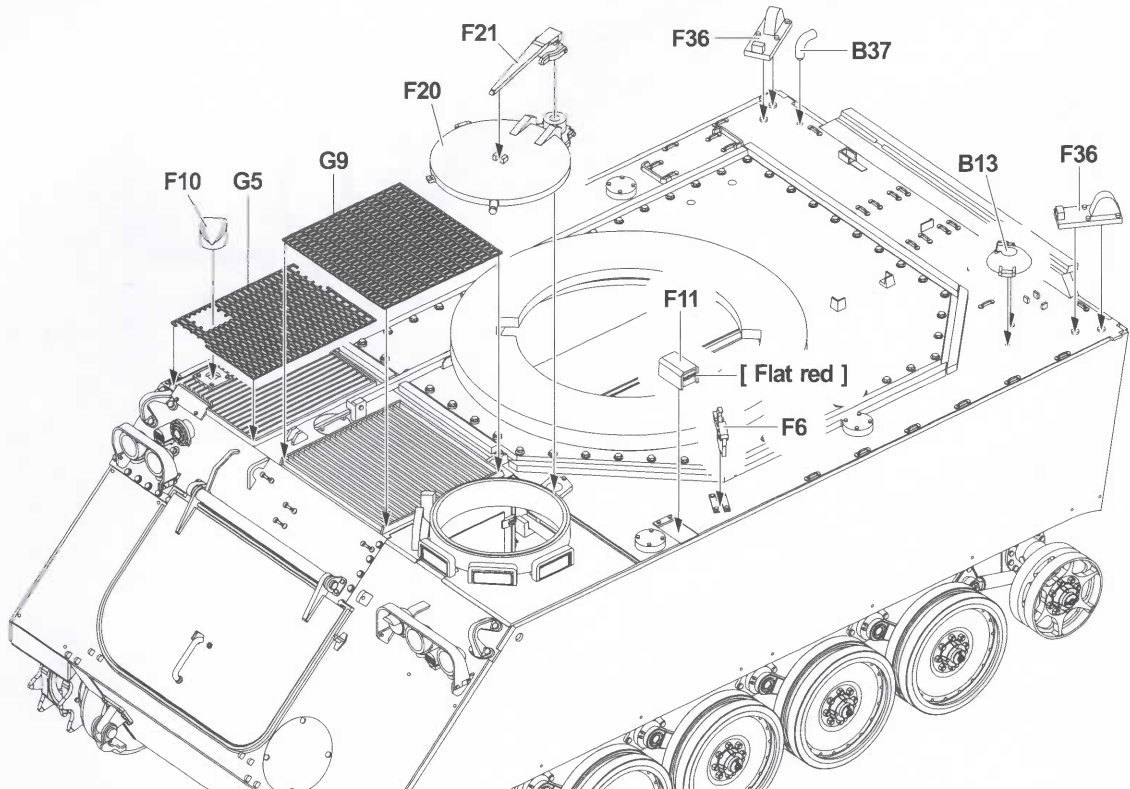


[Silver] [Tire black]

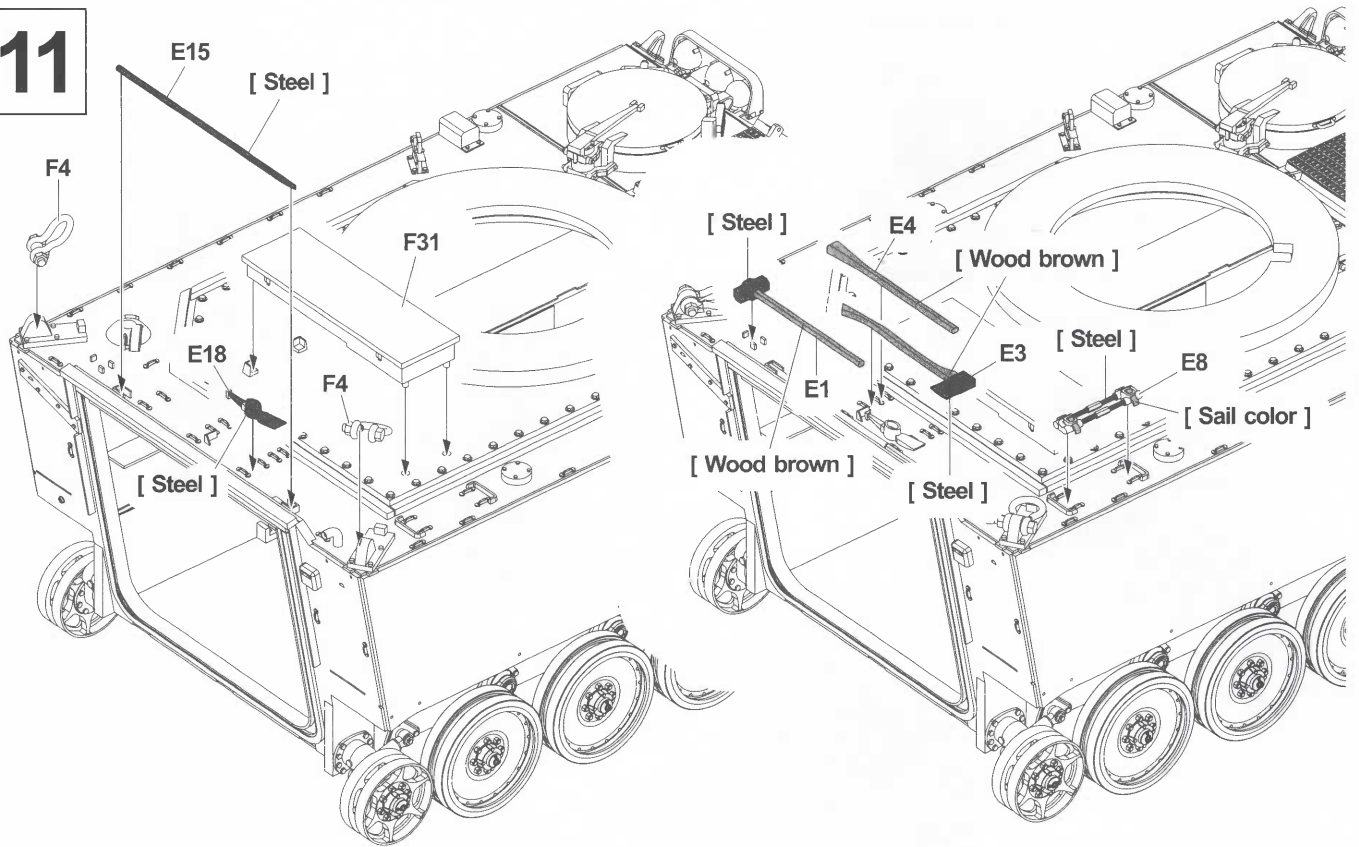
[Duck egg green]



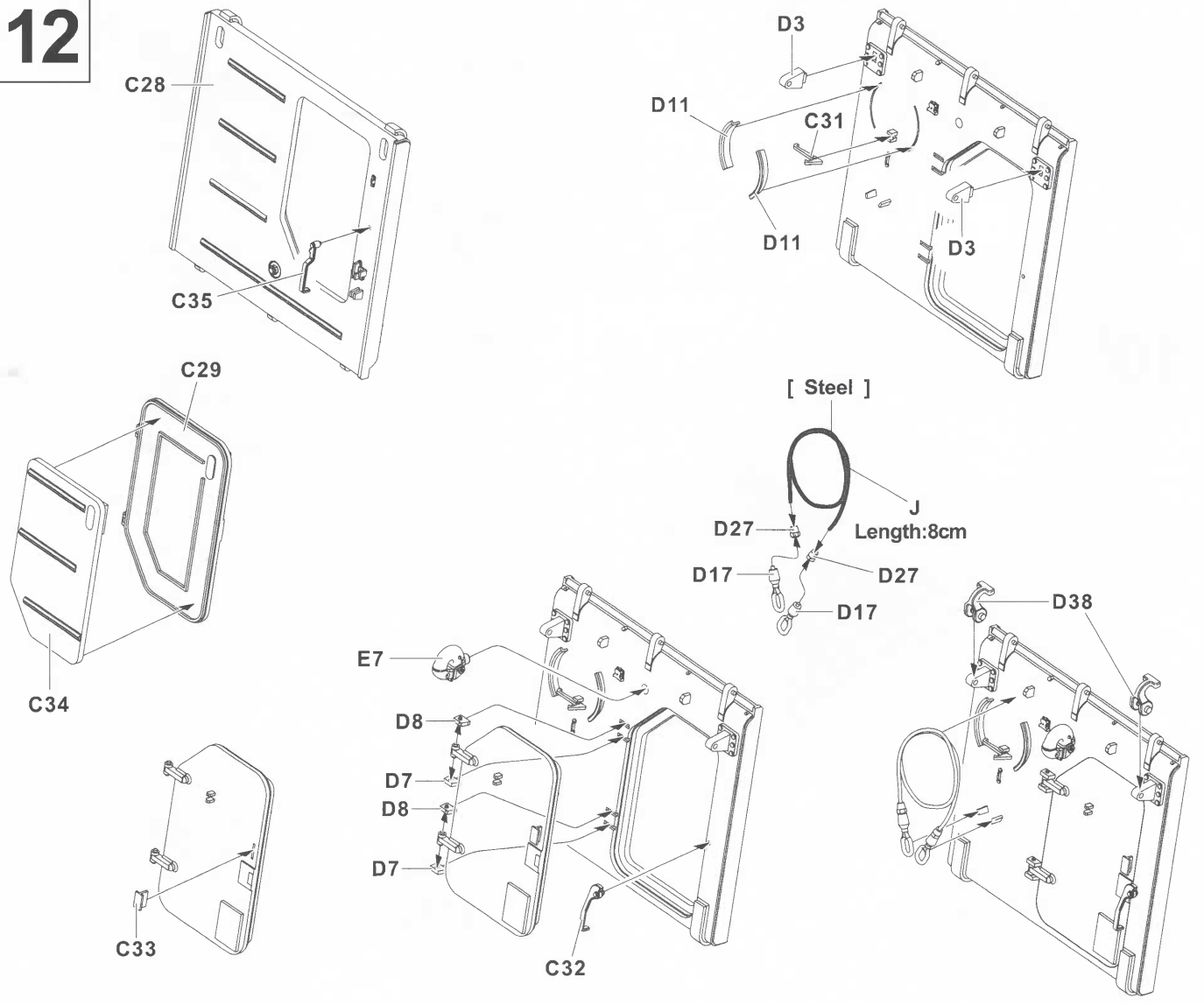
10



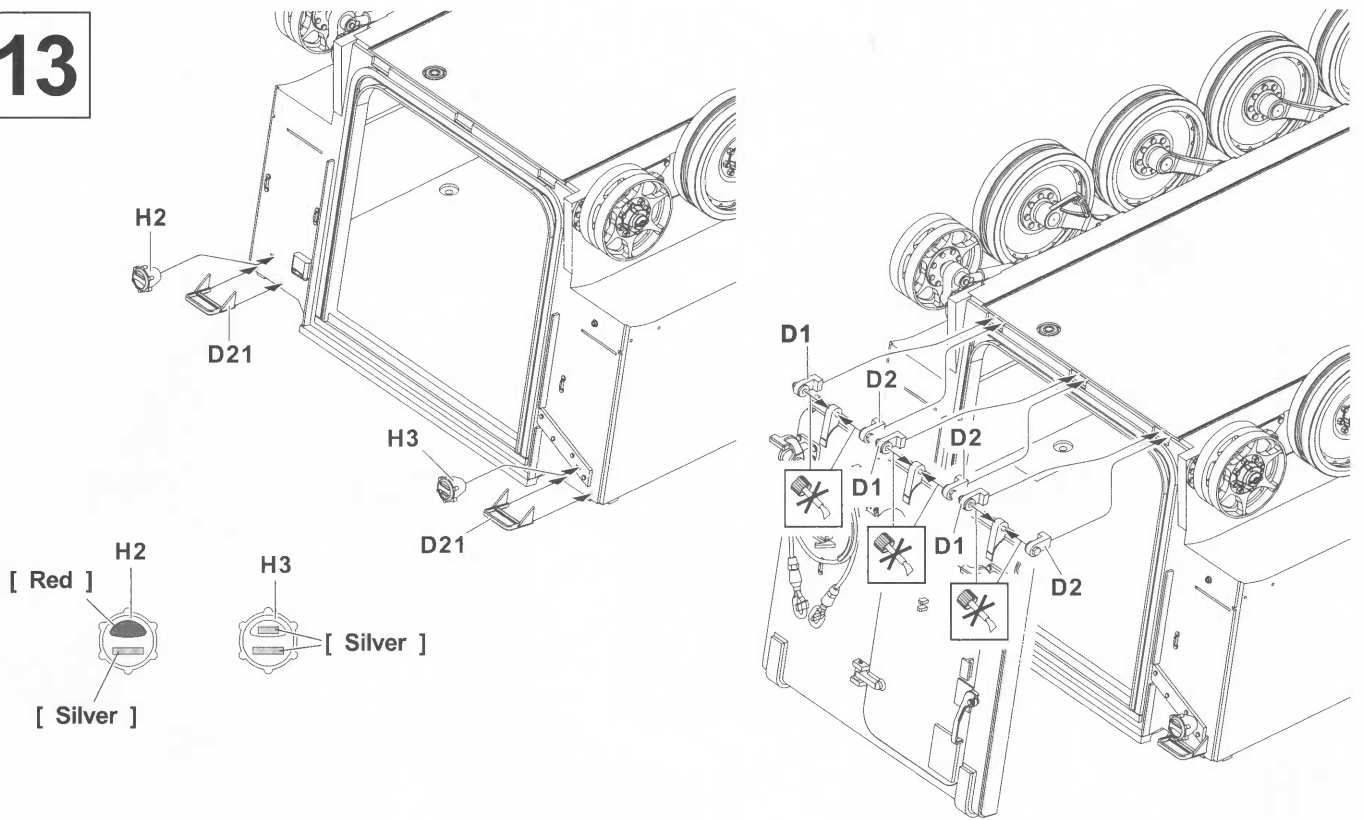
11



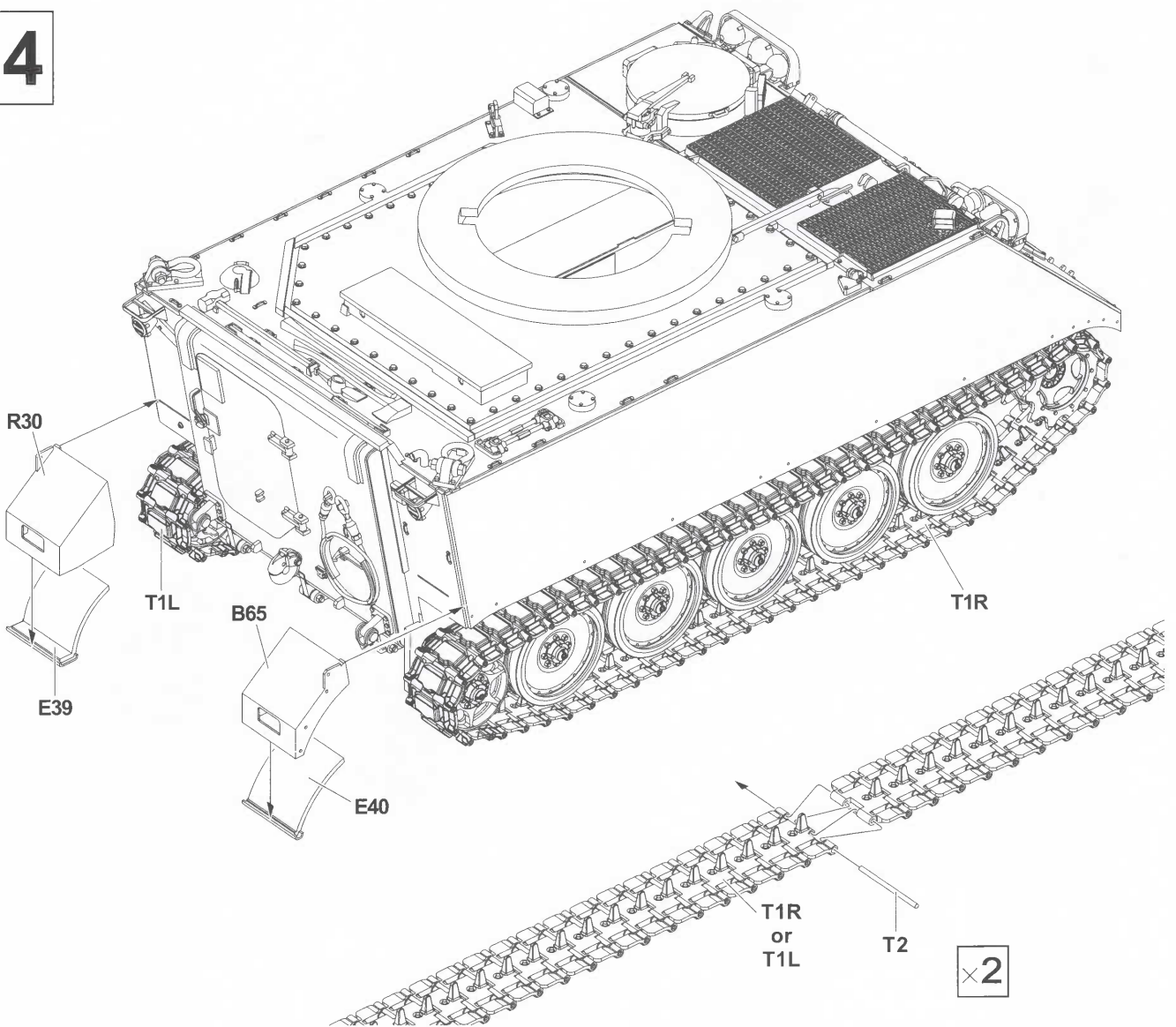
12



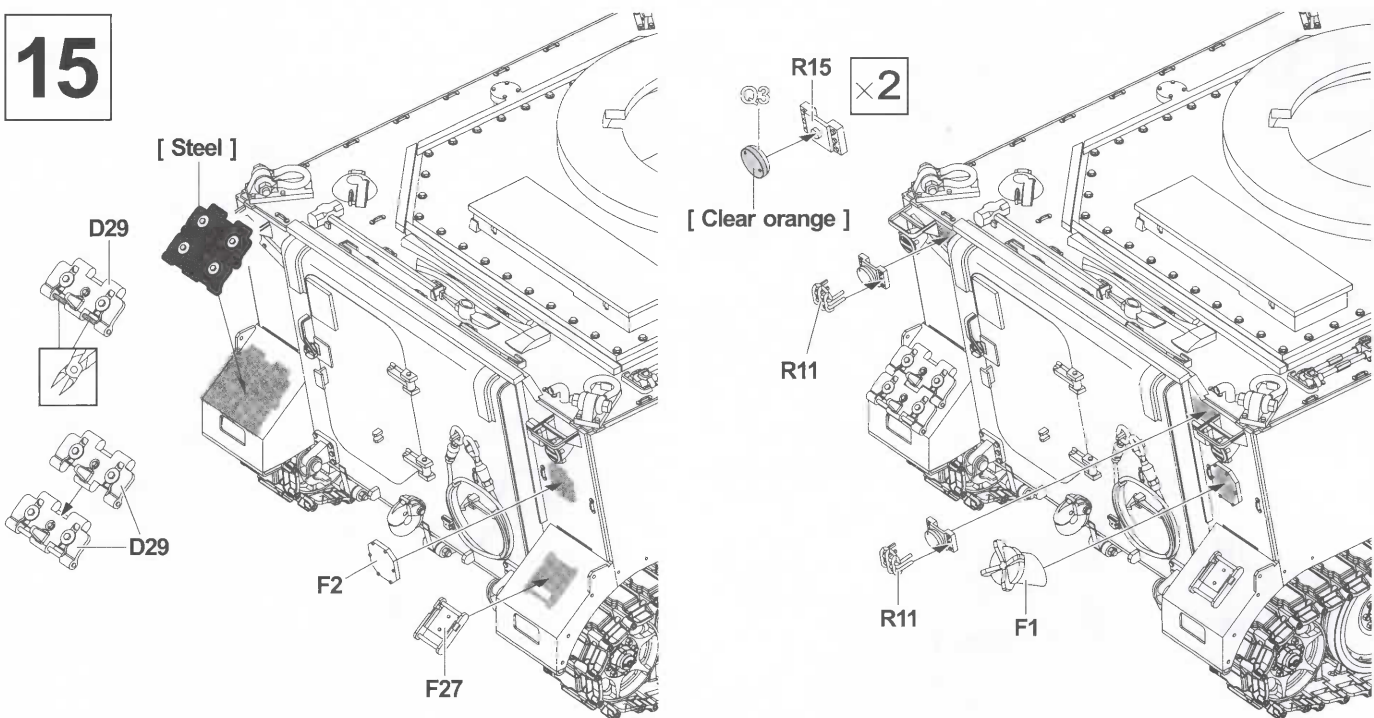
13



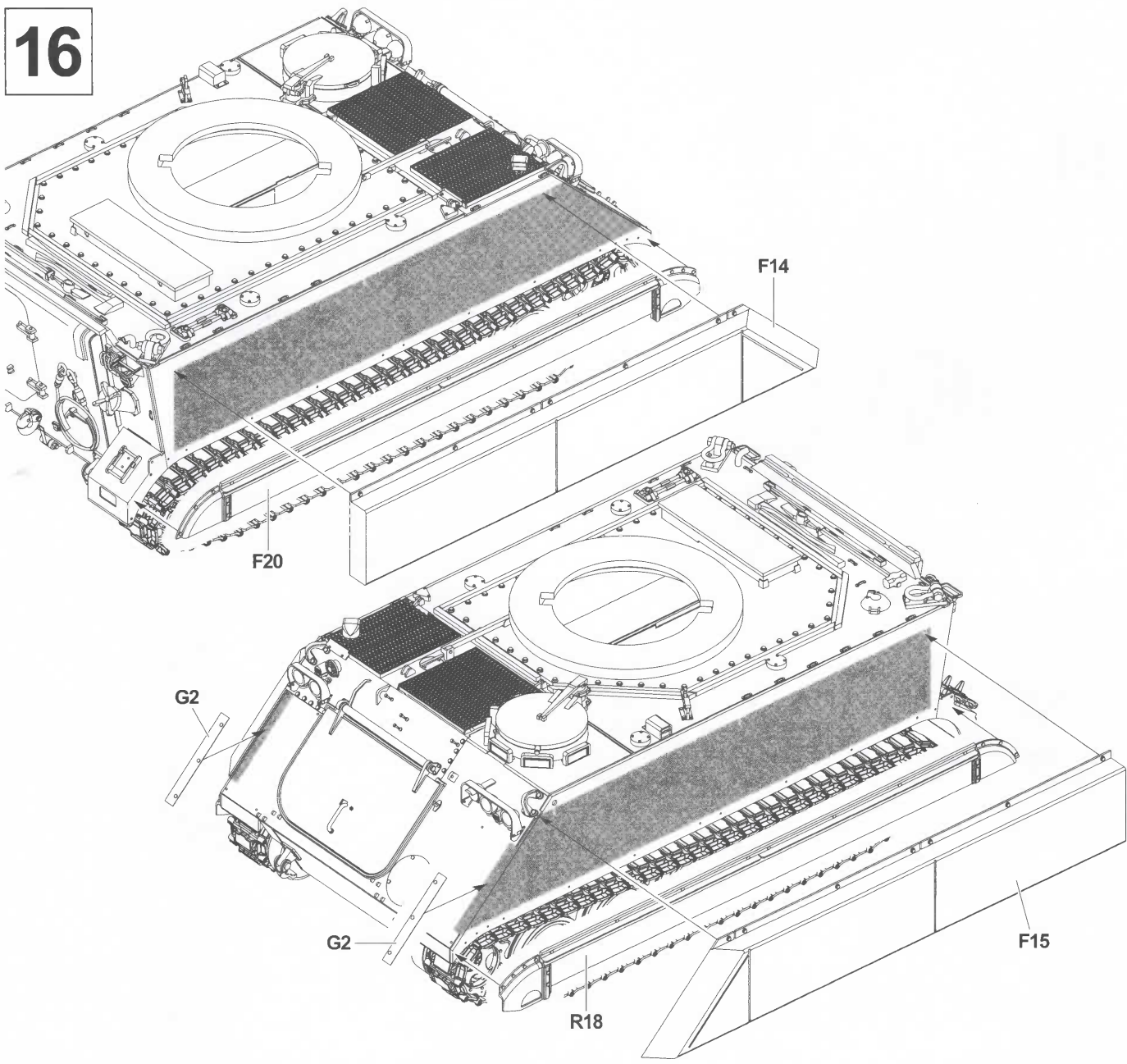
14



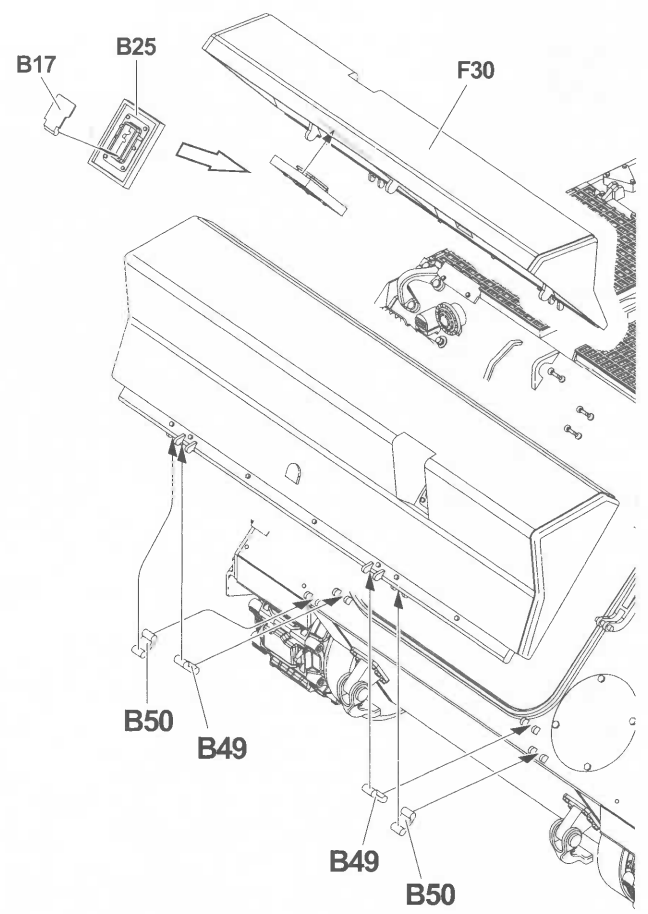
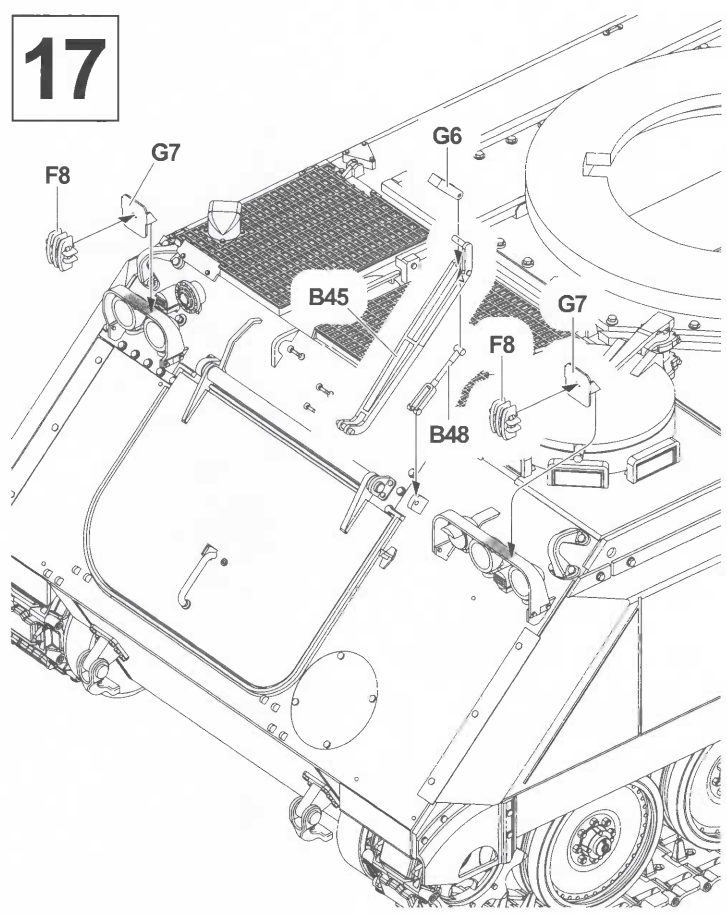
15



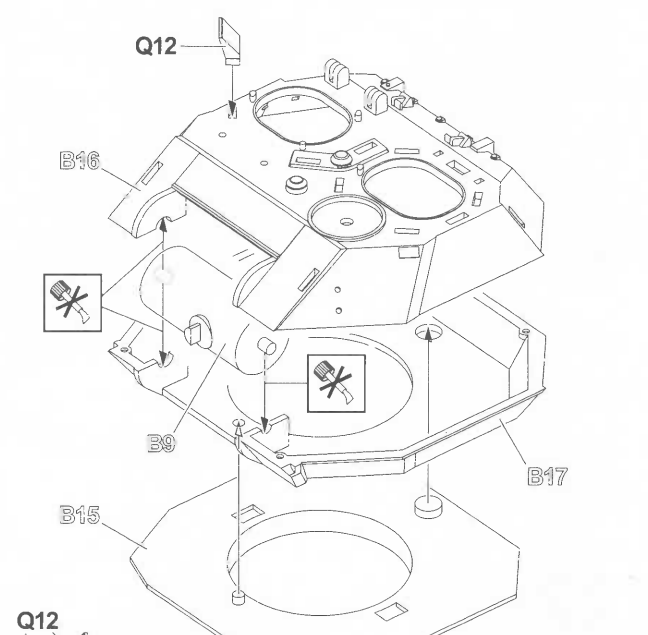
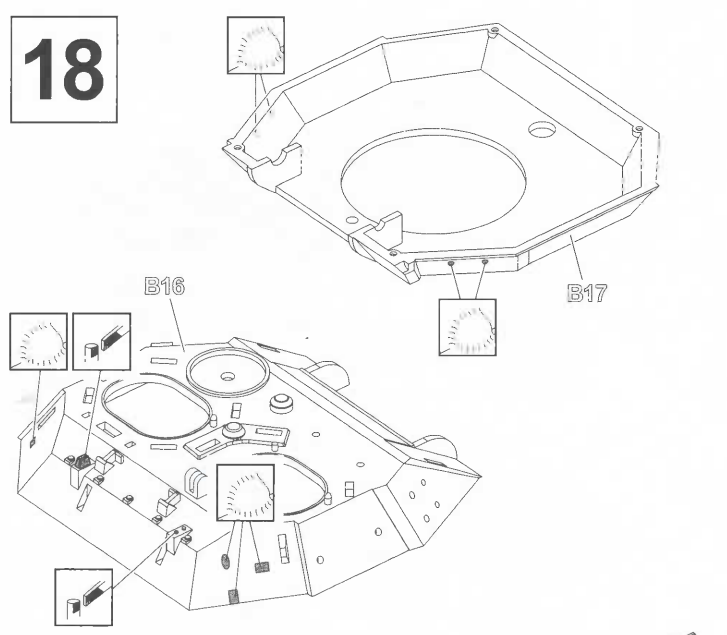
16



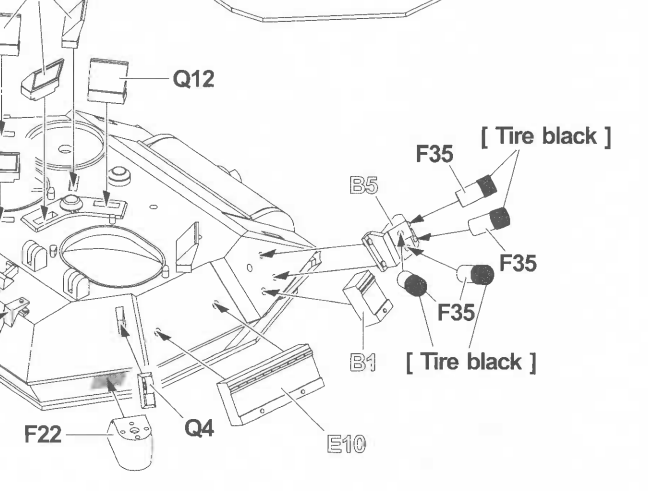
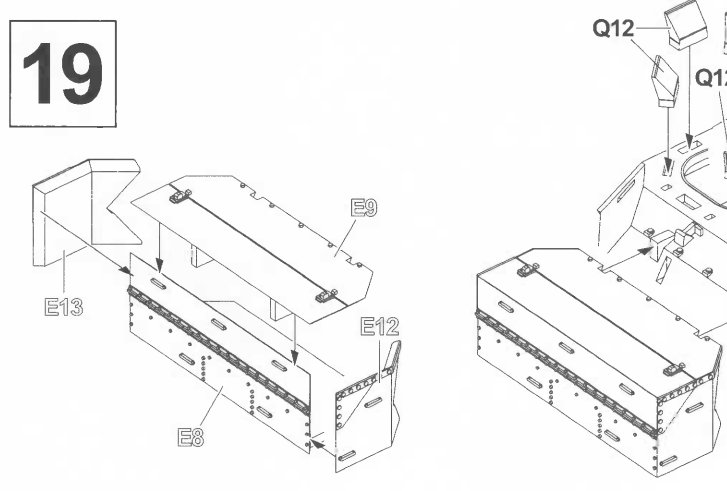
17



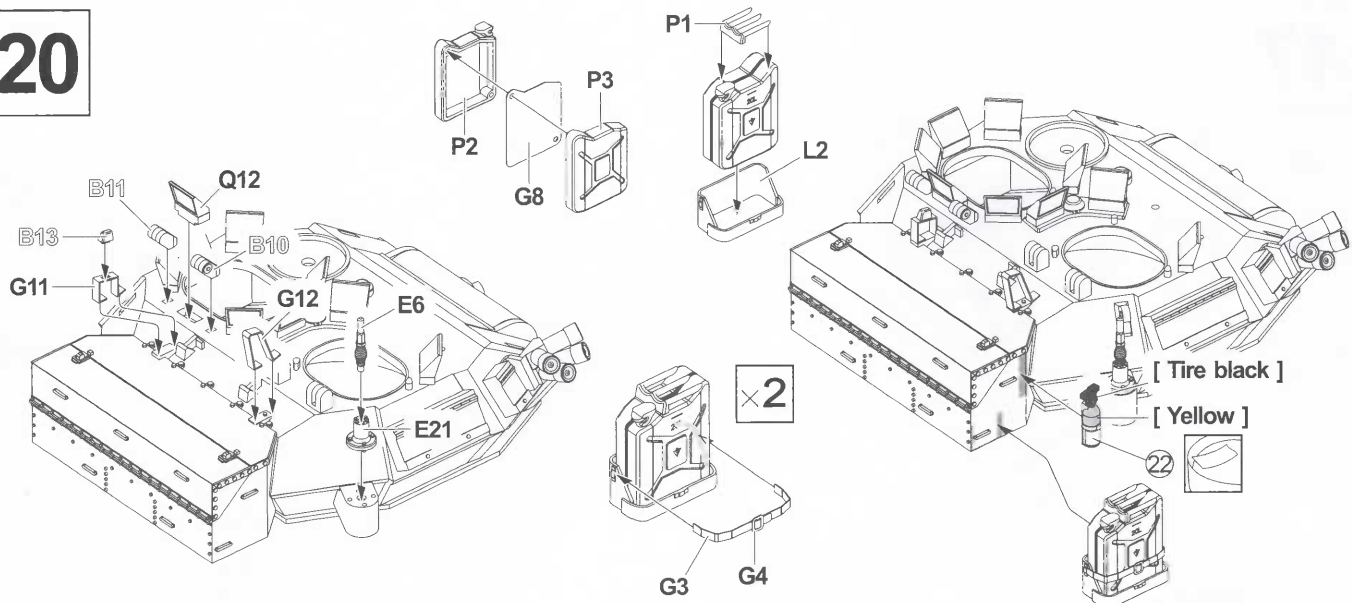
18



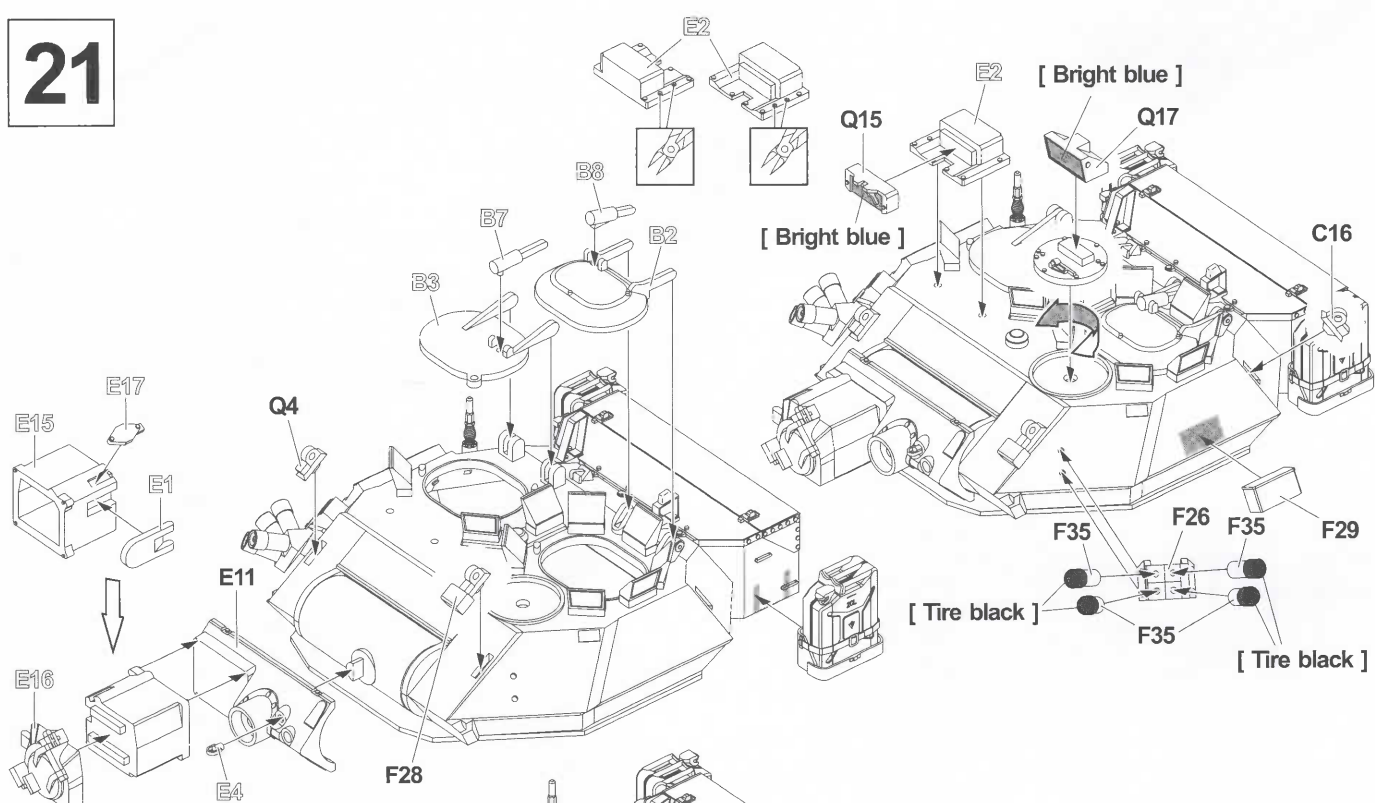
19



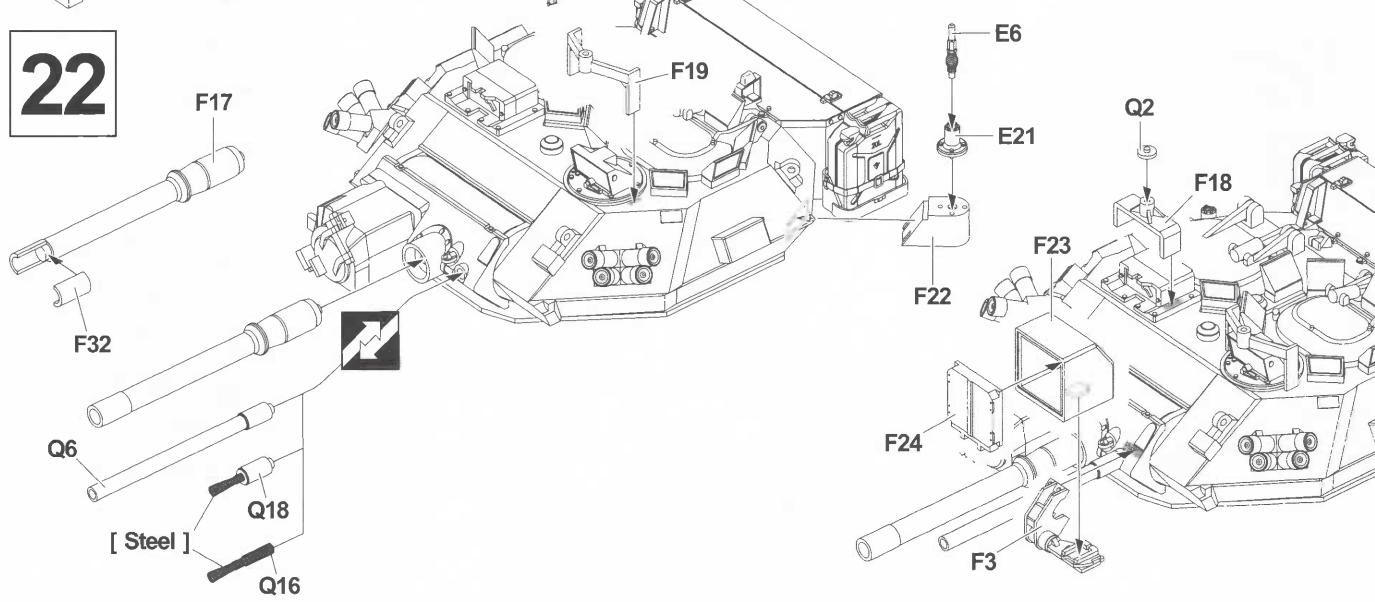
20



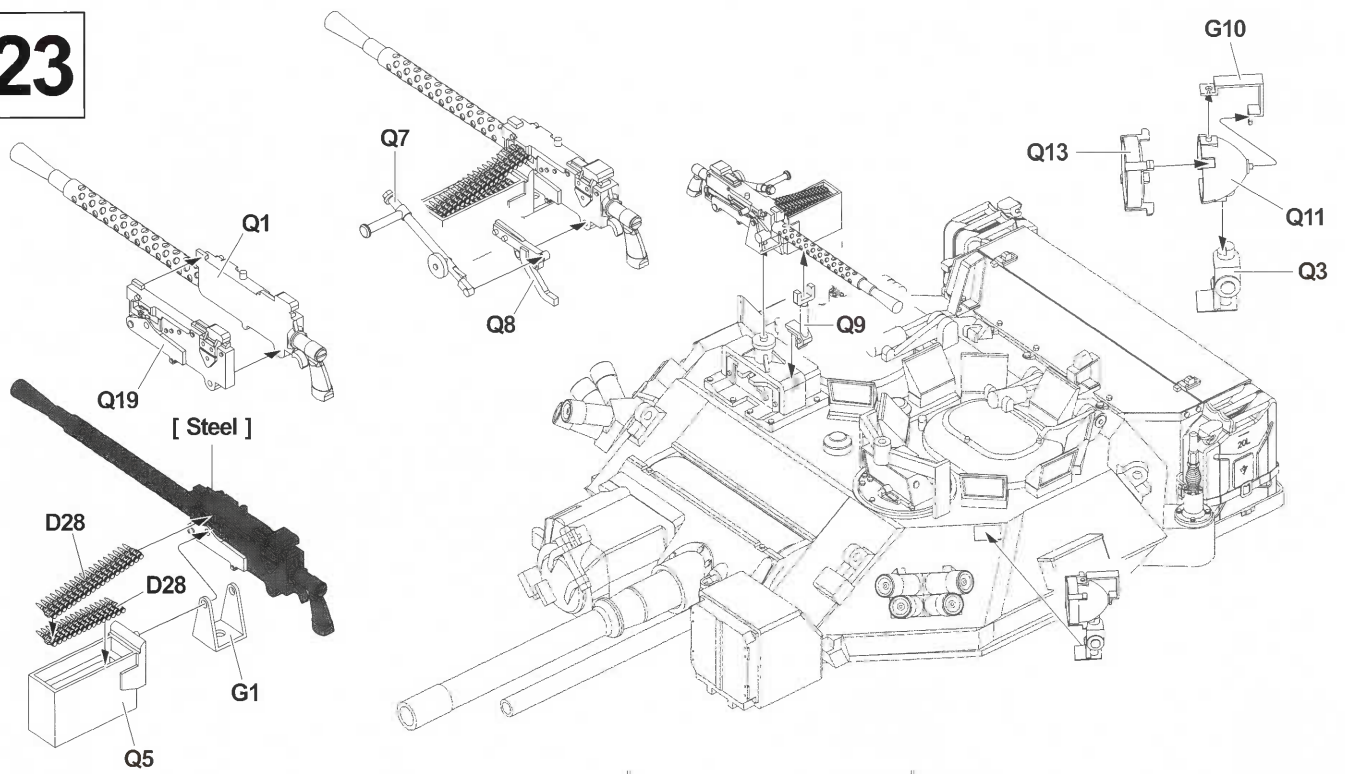
21



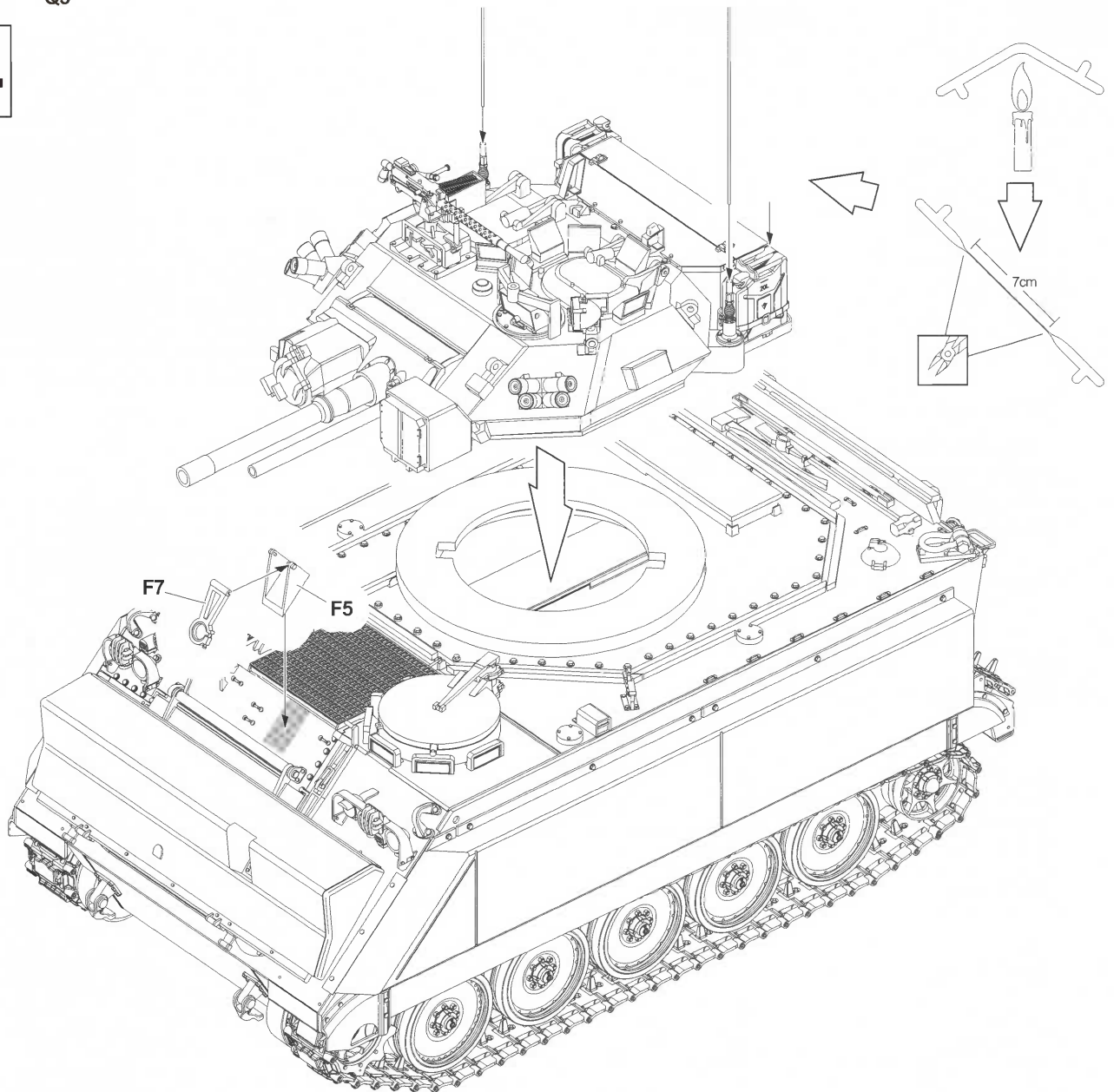
22



23

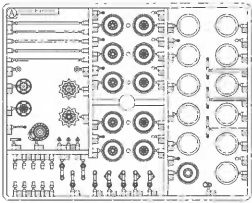


24

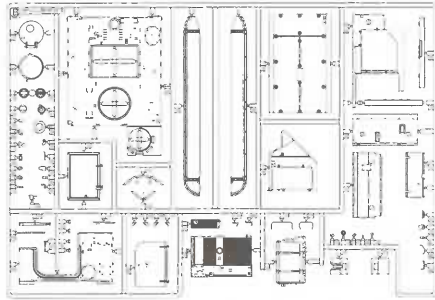


PARTS LIST 零件表

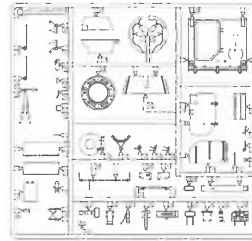
A X2 AF 35113



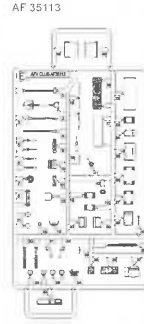
B X1 AF 35113



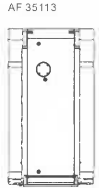
C X1 AF 35113



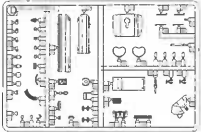
E X1 AF 35113



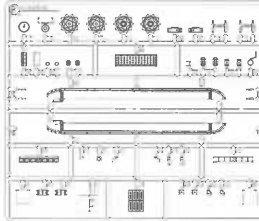
K X1 AF 35113



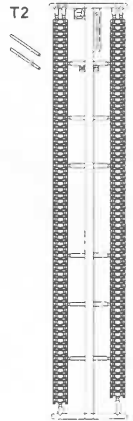
D X2 AF 35113



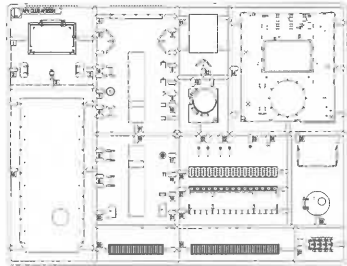
R X1 AF 35313



T X1 AF 35113



L X1 AF 35291



P X1 AF 35291



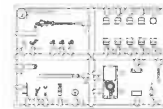
G X1 AF 35023



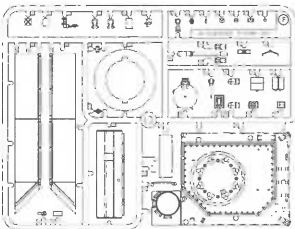
H X1 AF 35113



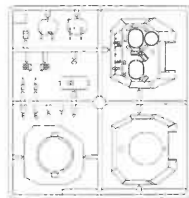
Q X1 AF 35023



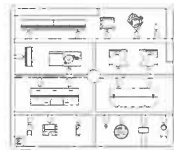
F X1 AF 35023



I X1 AF 35S02



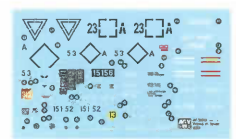
M X1 AF 35S02



N X1 AF 35291



J X1 AF 35023



Instructions:

If for some reason, you are not fully satisfied or have questions concerning our product; Please use the form provide, and send it to our nearest representative or mail it directly to our office.

We will deal with that A.S.A.P.

限臺灣地區使用 For Taiwanese use only!

AF 35023 Parts Replacement Form		
<input type="checkbox"/> AF 35113-A	<input type="checkbox"/> AF 35113-E	<input type="checkbox"/> AF 35291-L
<input type="checkbox"/> AF 35S02-B	<input type="checkbox"/> AF 35023-F	<input type="checkbox"/> AF 35291-P
<input type="checkbox"/> AF 35113-B	<input type="checkbox"/> AF 35023-G	<input type="checkbox"/> AF 35023-Q
<input type="checkbox"/> AF 35113-C	<input type="checkbox"/> AF 35113-H	<input type="checkbox"/> AF 35291-Q
<input type="checkbox"/> AF 35113-D	<input type="checkbox"/> AF 35023-J	<input type="checkbox"/> AF 35313-R
<input type="checkbox"/> AF 35S02-E	<input type="checkbox"/> AF 35113-K	<input type="checkbox"/> AF 35113-T
Reason for replacement: <input type="checkbox"/> Missing <input type="checkbox"/> Broken		
Signature: _____		

總代理戰鷹企業有限公司收本公司將儘速為您處理。
請將本表與該部品相同金額之郵政匯票一同寄至。

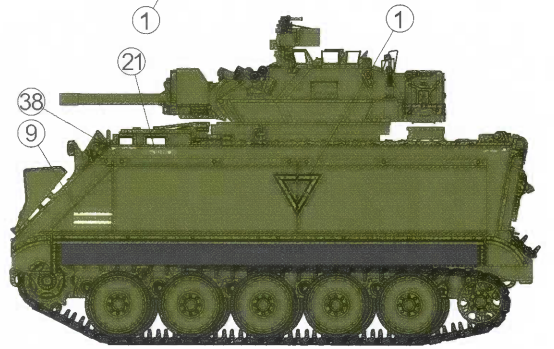
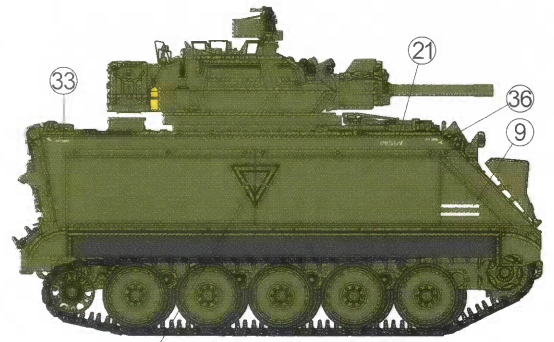
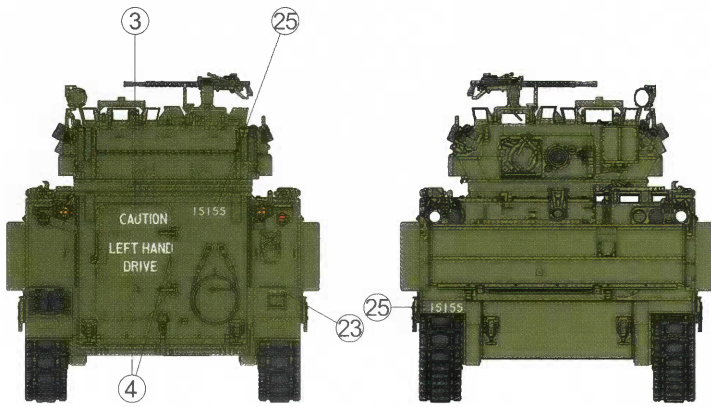
AF 35023 零件補充申請表		申請人 姓名	地址	電話
<input type="checkbox"/>	AF 35113-A	NT\$	380	
<input type="checkbox"/>	AF 35S02-B	NT\$	190	
<input type="checkbox"/>	AF 35113-B	NT\$	360	
<input type="checkbox"/>	AF 35113-C	NT\$	270	
<input type="checkbox"/>	AF 35113-D	NT\$	280	
<input type="checkbox"/>	AF 35S02-E	NT\$	180	
<input type="checkbox"/>	AF 35113-E	NT\$	300	
<input type="checkbox"/>	AF 35023-F	NT\$	300	
<input type="checkbox"/>	AF 35023-G	NT\$	180	
<input type="checkbox"/>	AF 35113-H	NT\$	180	
<input type="checkbox"/>	AF 35023-J	NT\$	160	
<input type="checkbox"/>	AF 35113-K	NT\$	180	
<input type="checkbox"/>	AF 35291-L	NT\$	240	
<input type="checkbox"/>	AF 35291-P	NT\$	120	
<input type="checkbox"/>	AF 35023-Q	NT\$	200	
<input type="checkbox"/>	AF 35291-Q	NT\$	150	
<input type="checkbox"/>	AF 35313-R	NT\$	300	
<input type="checkbox"/>	AF 35113-T	NT\$	280	
+郵寄費		NT\$	80	
(請填)總計NT\$		_____		
零件補充原因:(請於 <input type="checkbox"/> 打√)				
原包裝即 <input type="checkbox"/> 遺失或 <input type="checkbox"/> 毀損,				
製作途中 <input type="checkbox"/> 遺失或 <input type="checkbox"/> 毀損,				
其他原因 _____				



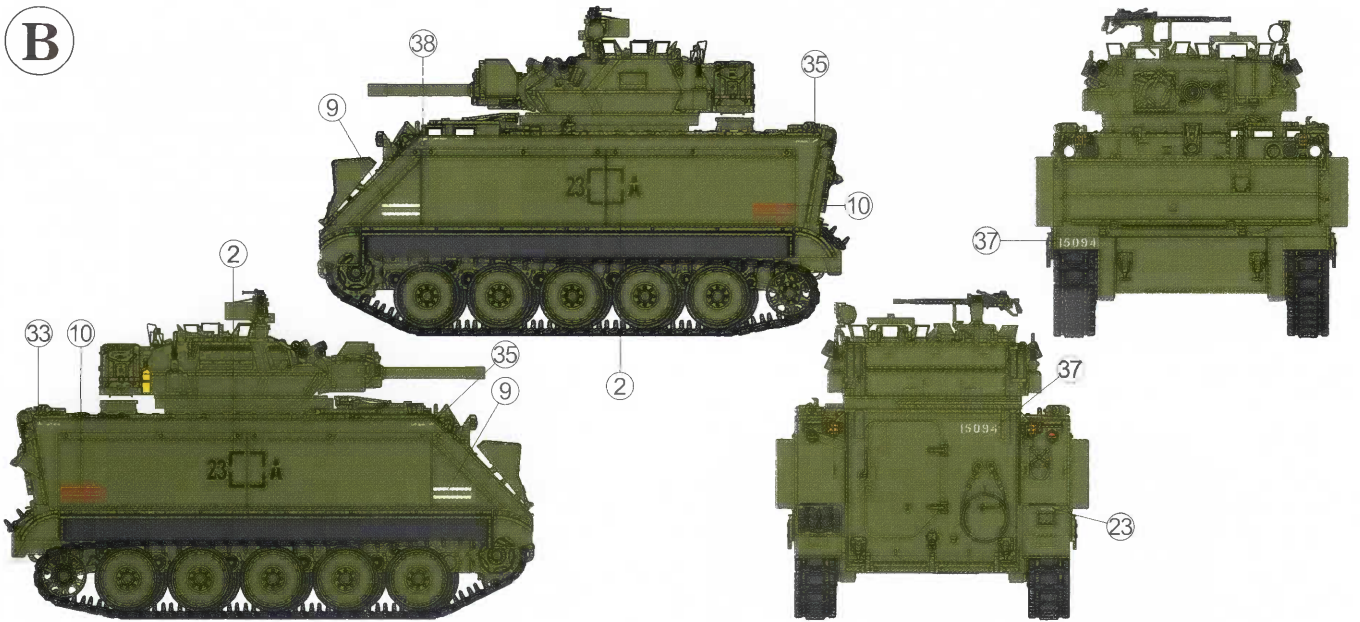


Body Color:  Olive drab FS 34087

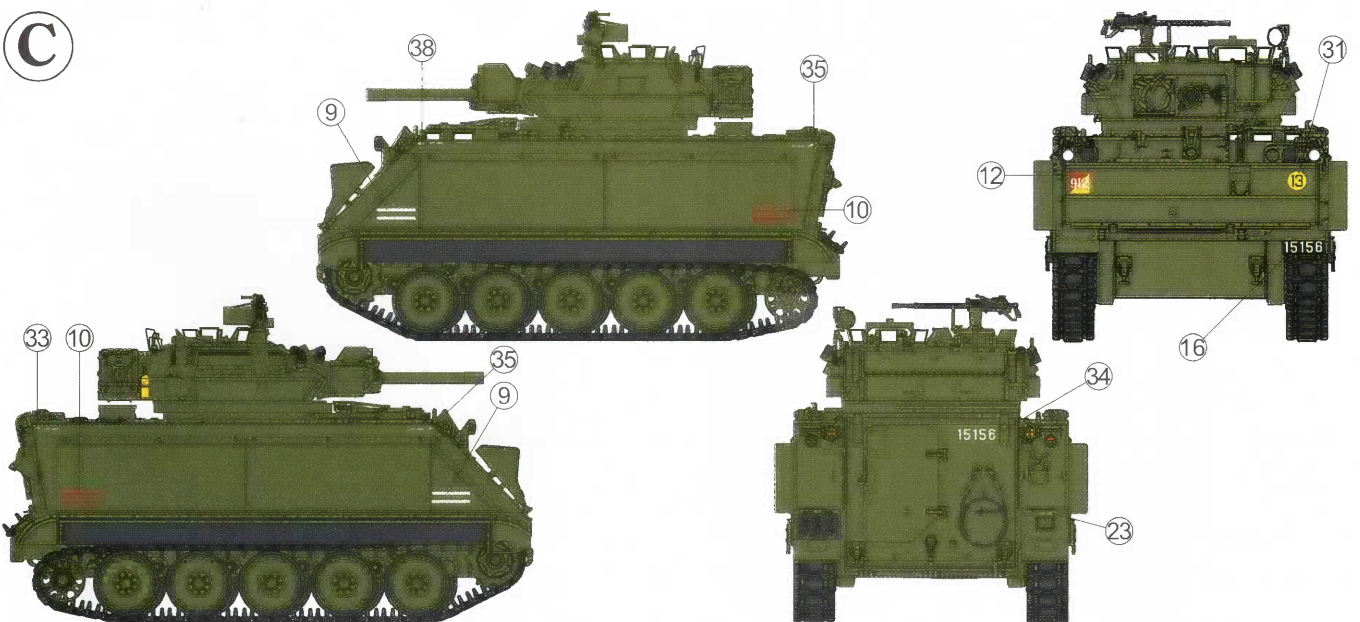
A



B



C



D 

Body Color:  Brown FS30219  Interior green FS34151

 Flat black FS37038

