

ACADEMY

HOBBY MODEL KITS



1/48 Scale

AH-64D LONGBOW

Until the Gulf War, the **AH-64D Apache** was questioned by some as to its durability and maintainability under combat conditions. Its outstanding performance in the harsh climate of Iraq and Kuwait removed all doubt as to its air superiority and durability under the worst conditions. The **Longbow** (Apache) is uniformly praised and regarded as the finest attack helicopter in the world.

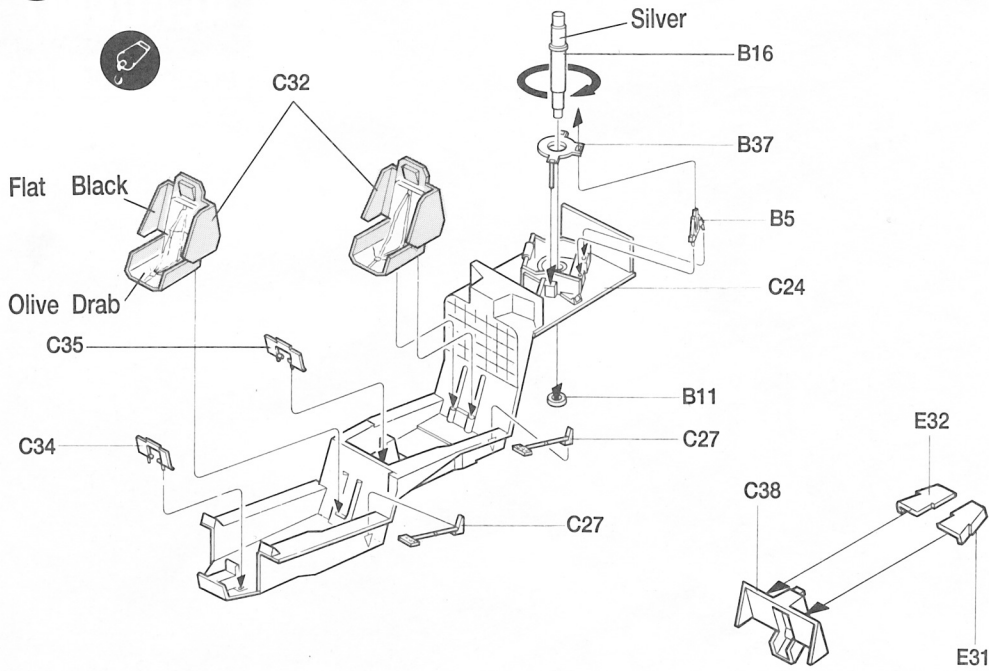
Like all weapons systems, ways can be found to improve even upon a good product. So it is with the **AH-64D Longbow**. The most easily observable difference between the "A" and "D" versions are the larger avionics bays on both sides of the nose. These larger housings provide the room for much more sophisticated navigation, communication and weapons systems. The **Longbow** is equipped with highly advanced electronic systems that can rapidly detect, classify, prioritize and engage multiple ground or airborne targets through battlefield haze and under almost all weather conditions. Not as easily observable are the more powerful -701C engines that power the Longbow "C" and "D" versions and enable it to lift heavier weapons and or fuel loads.

Unlike most helicopters the **Longbow** has been designed to be self-deployable over long distances by means of precision world-wide navigation instrumentation and long-range communications capability.

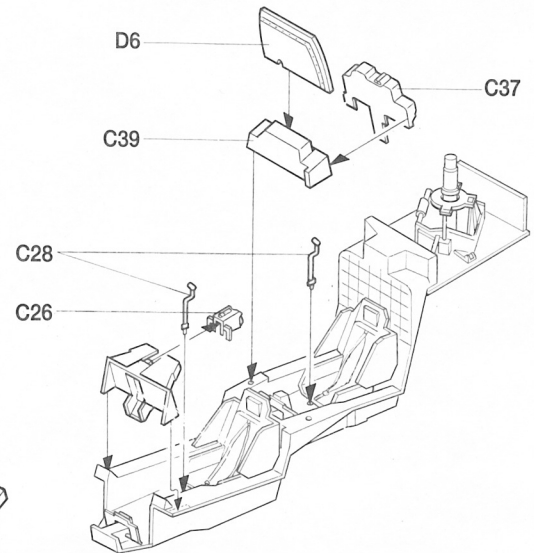
Longbow is regarded as a true Combined Arms force multiplier able to defeat future battlefield threats well into the 21st century.

Under present US Army plans, 535 "A" Apaches will be remanufactured to "C" or "D" standards. The balance of the force will be up-graded by field-retrofits.

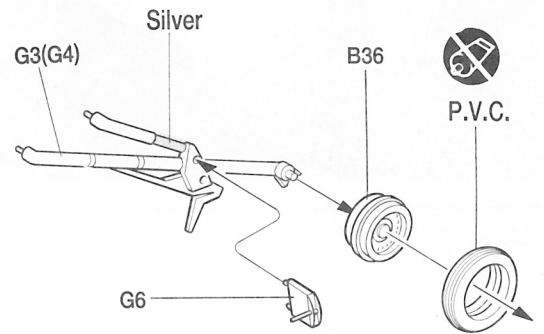
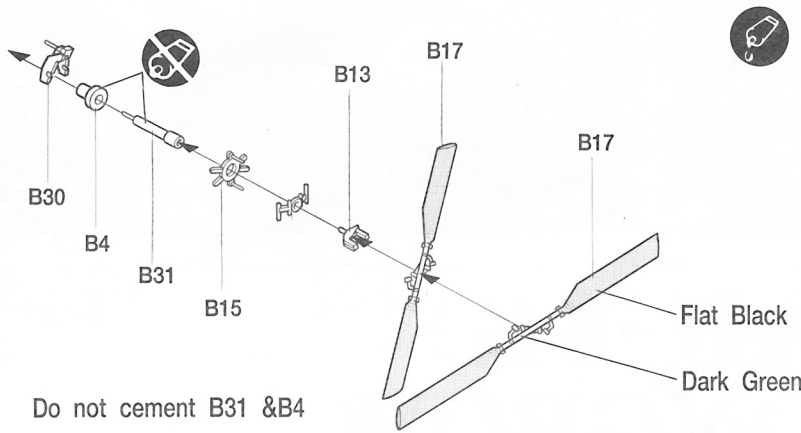
1 COCKPIT ASSEMBLY



● PAINT COCKPIT INTERIOR FLAT BLACK

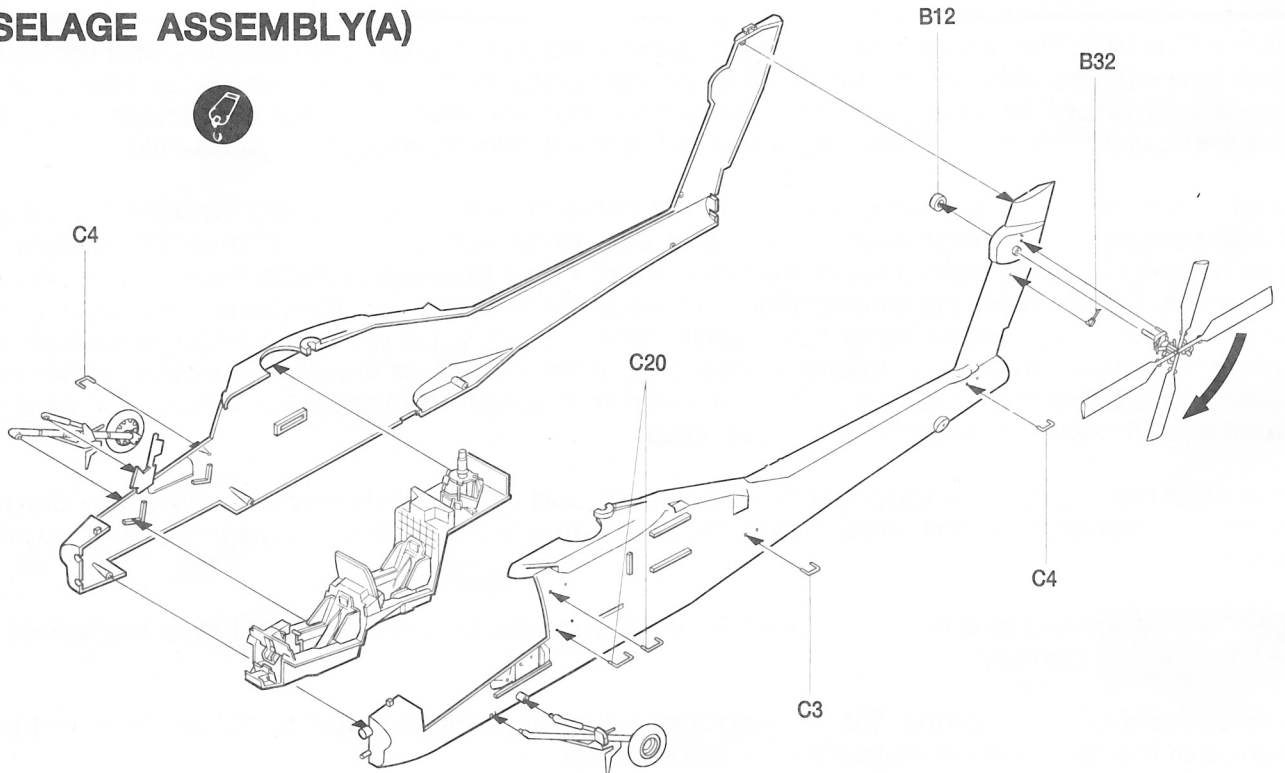


2 TAIL ROTOR & MAIN GEAR ASSEMBLY



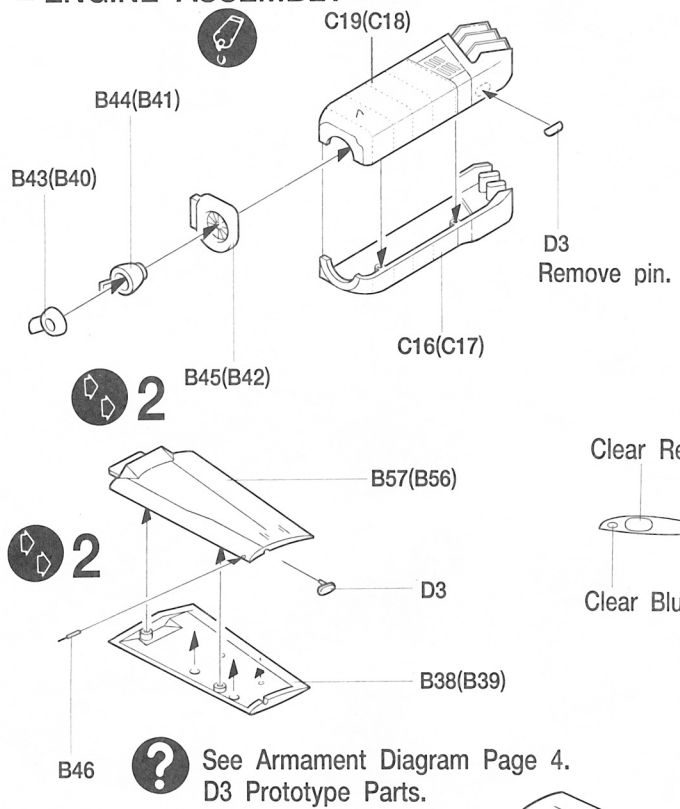
2

3 FUSELAGE ASSEMBLY(A)

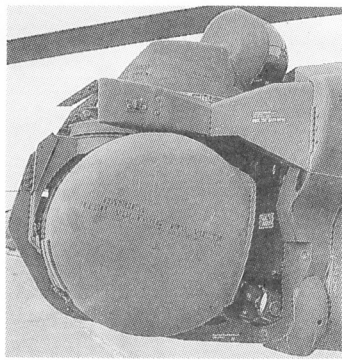
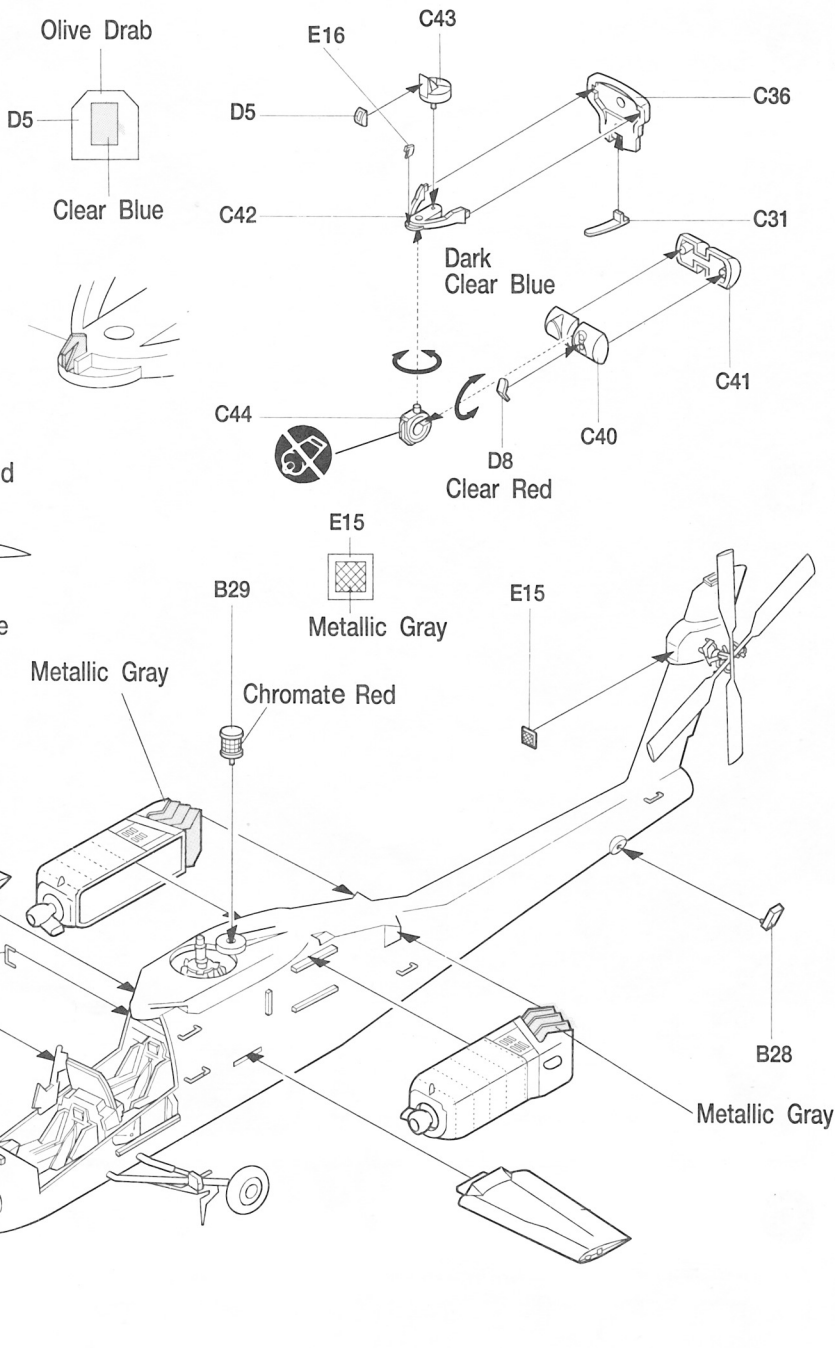


4 FUSELAGE ASSEMBLY(B)

ENGINE ASSEMBLY

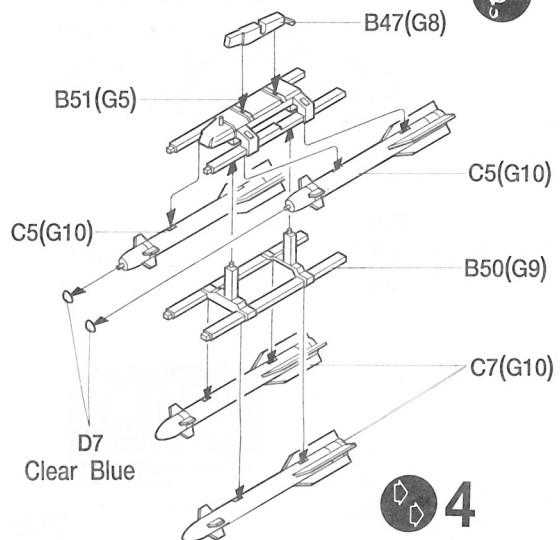


TADS/PNVS TURRET

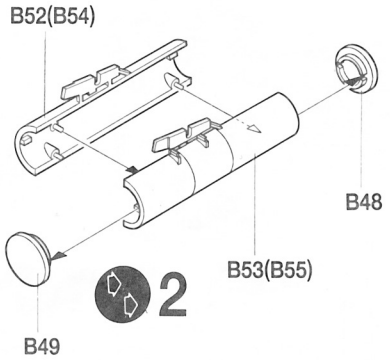


5 WEAPONS ASSEMBLY

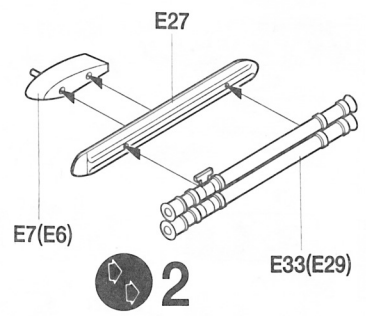
Hellfire ATM



70mm FFAR



Stinger AAM

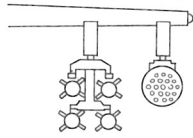


Outside View Hellfire(Right/Left Wing)

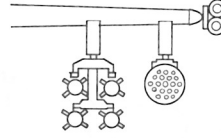


6 ARMAMENT DIAGRAM

● Prototype

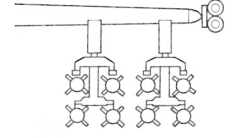


?



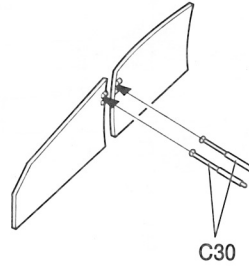
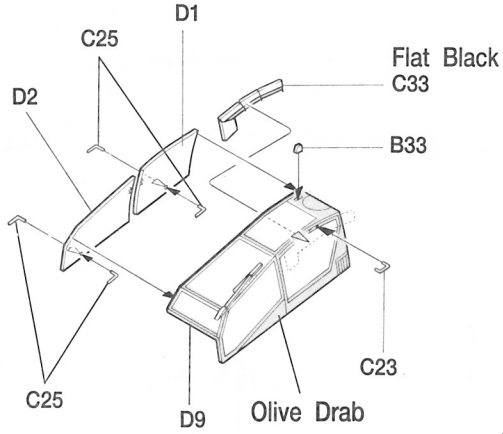
● Normal Type

?

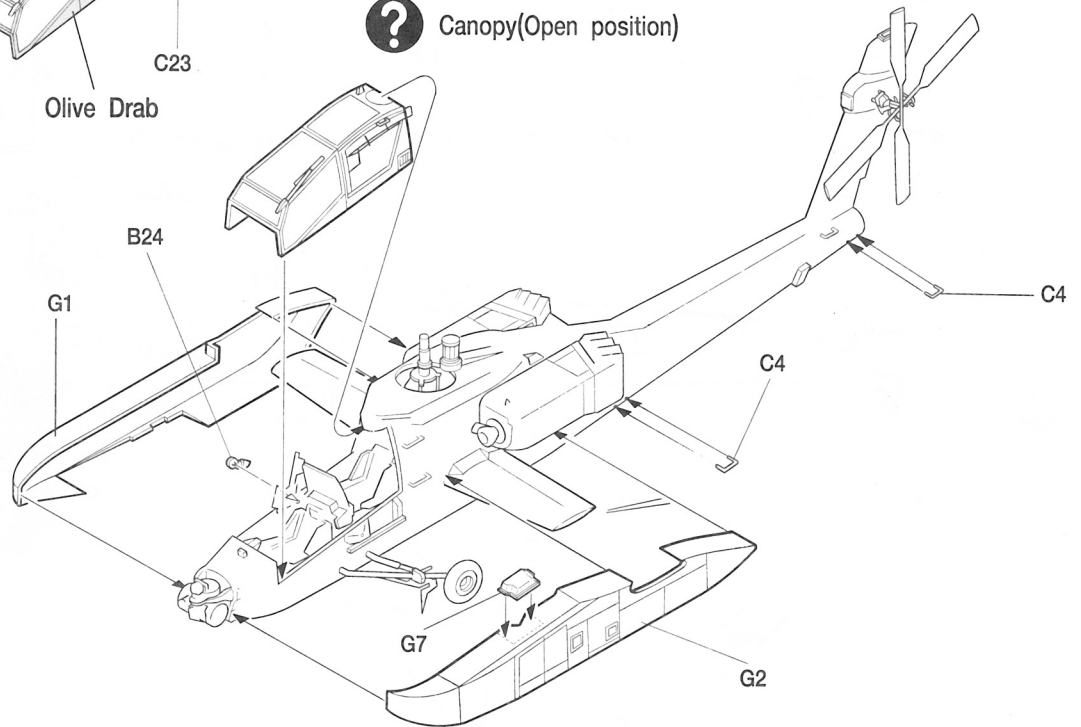


● Hellfire Heavy Loaded Type

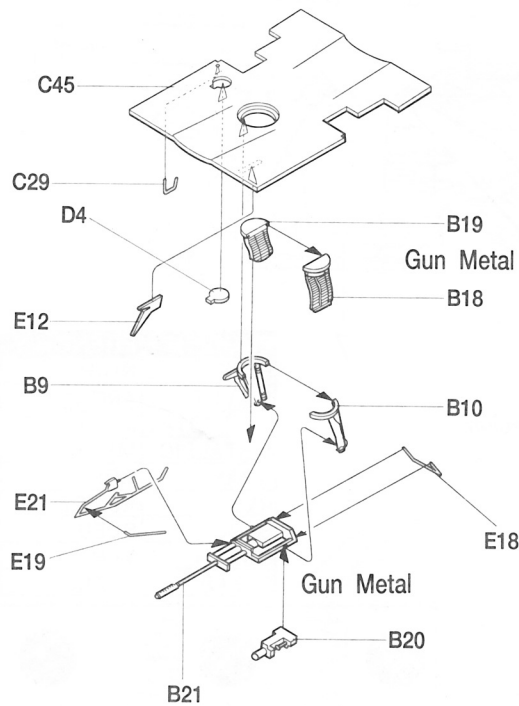
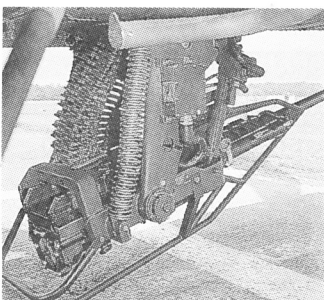
7 CANOPY & SPONSON INSTALLATION



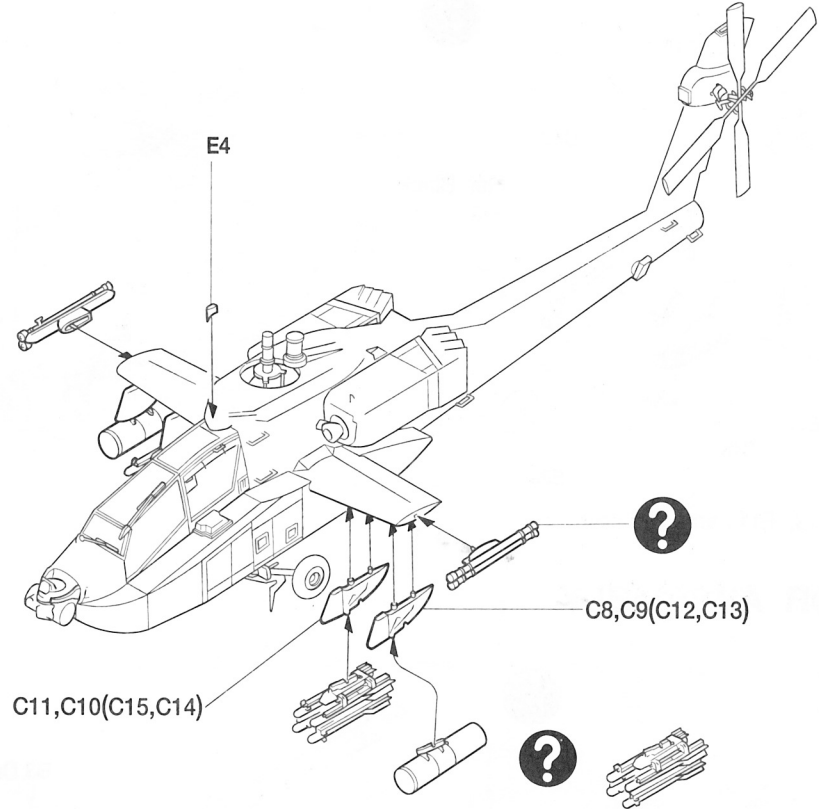
? Canopy(Open position)



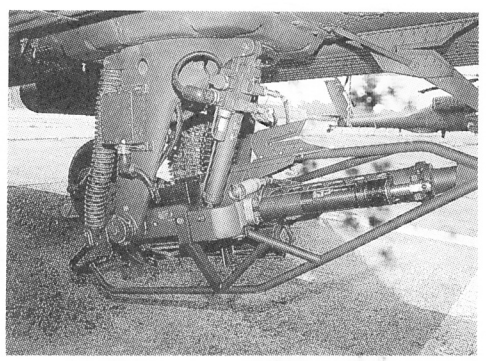
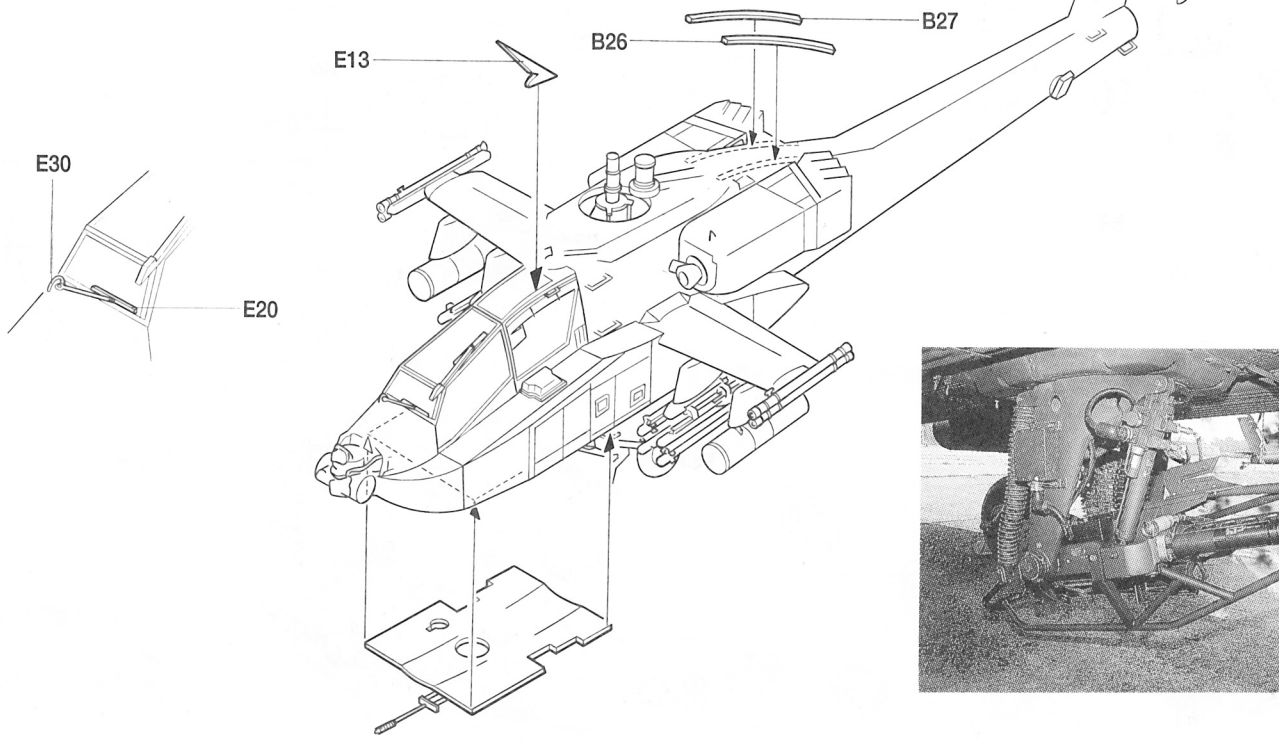
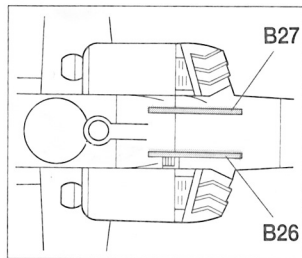
8 GUN ASSEMBLY



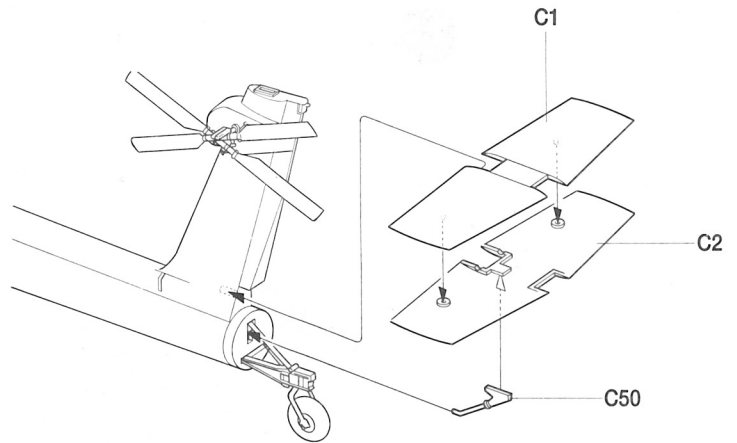
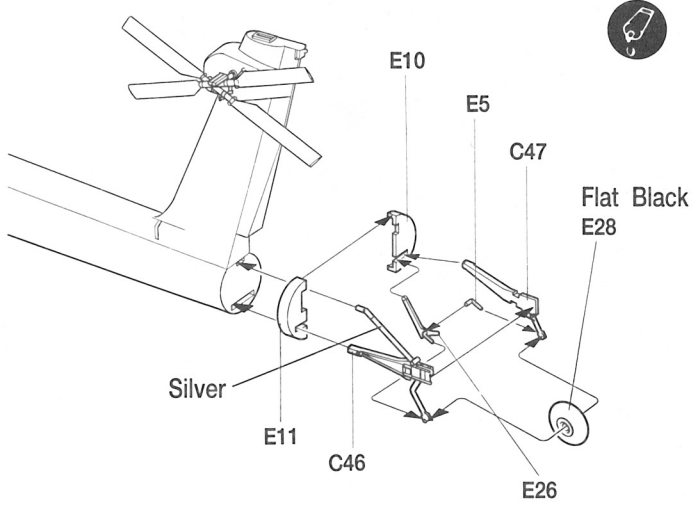
9 WEAPONS INSTALLATION



10 GUN INSTALLATION

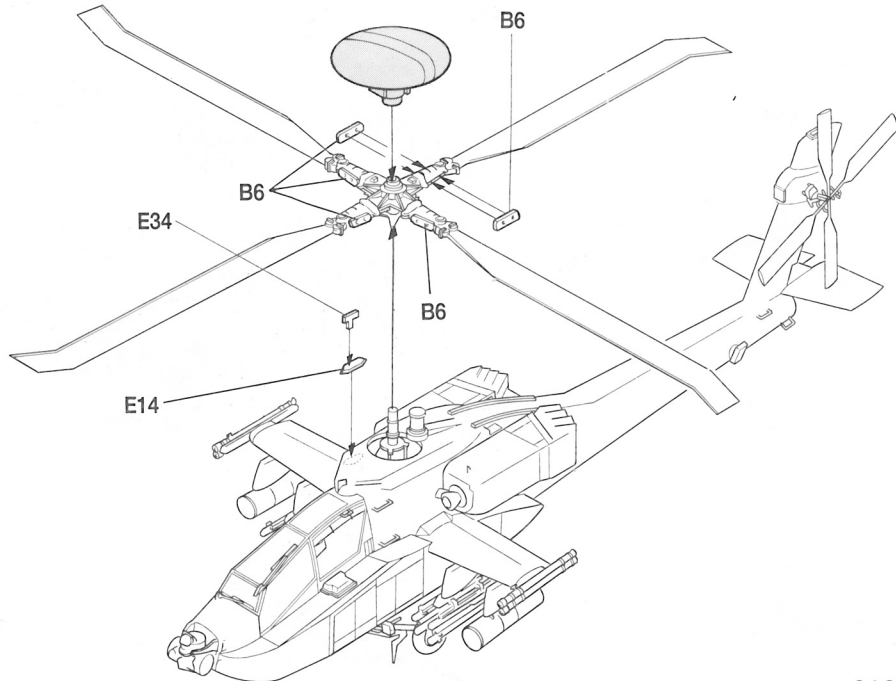
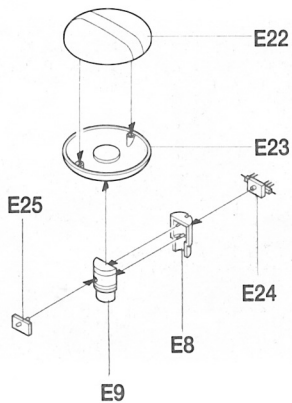
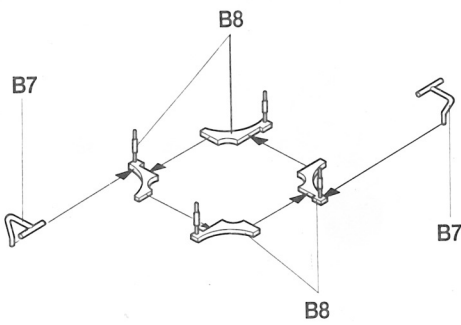
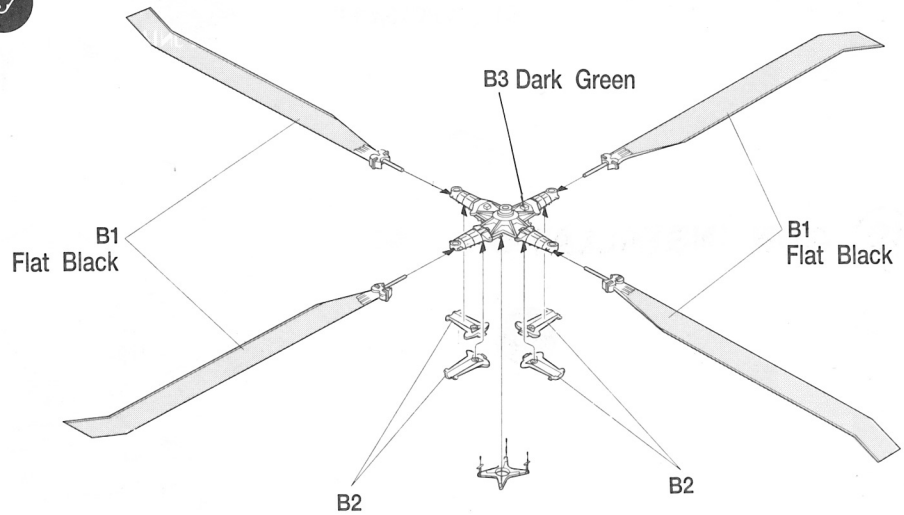
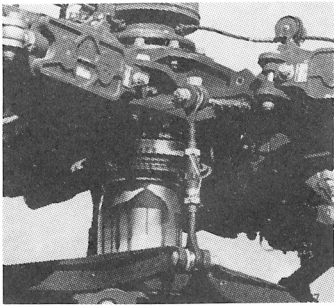


11 TAIL GEAR & ELEVATOR INSTALLATION



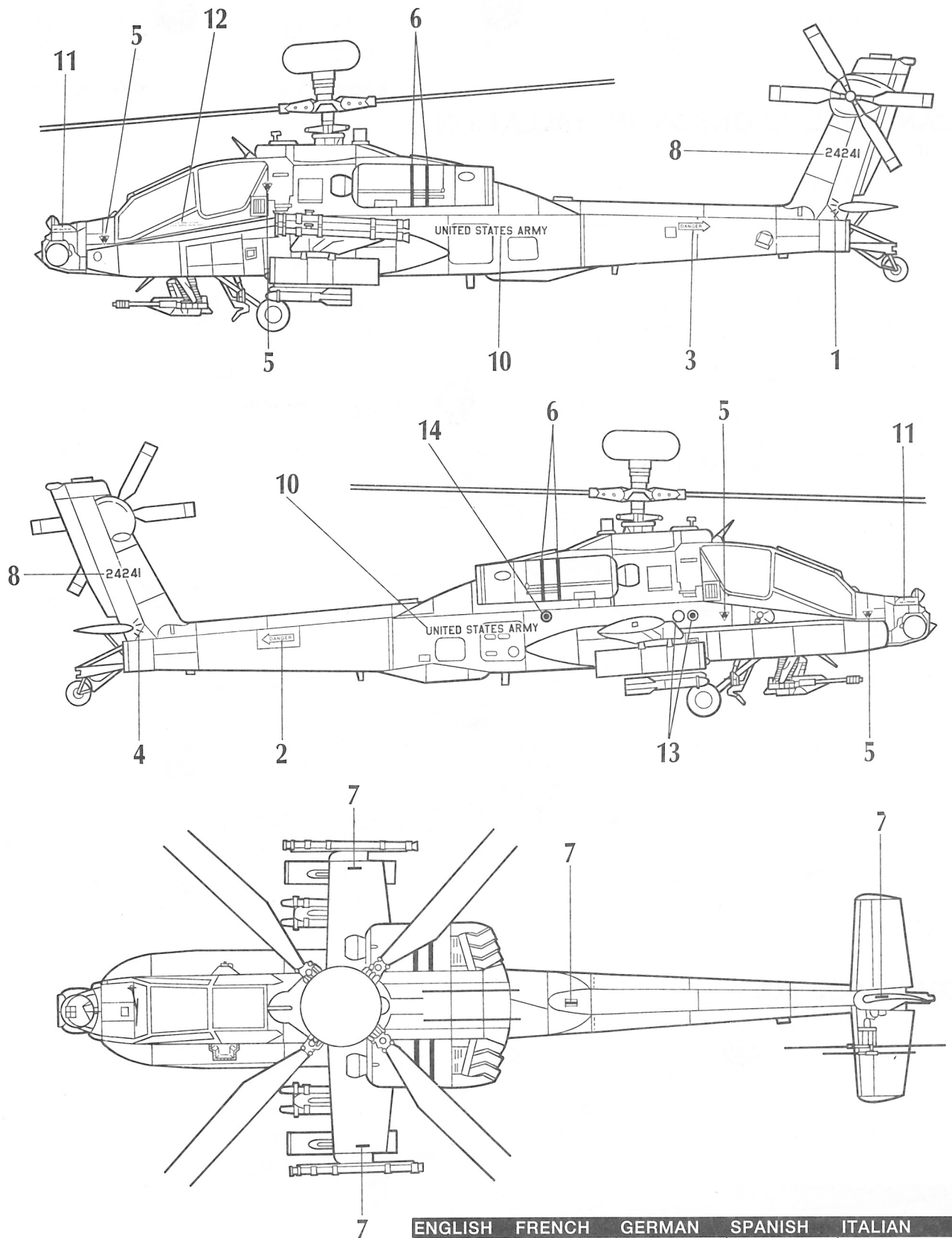
Assemble E10, E11, and E26 last.

12 MAIN ROTOR ASSEMBLY



PAINTING & DECAL PLACEMENT






Paint overall OLIVE DRAB F.S. 34087



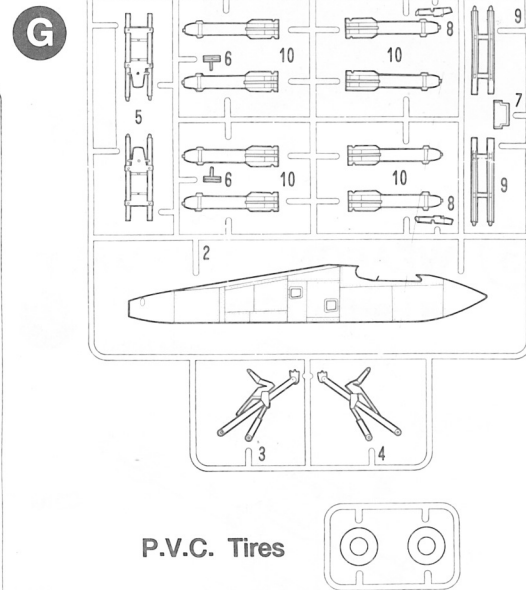
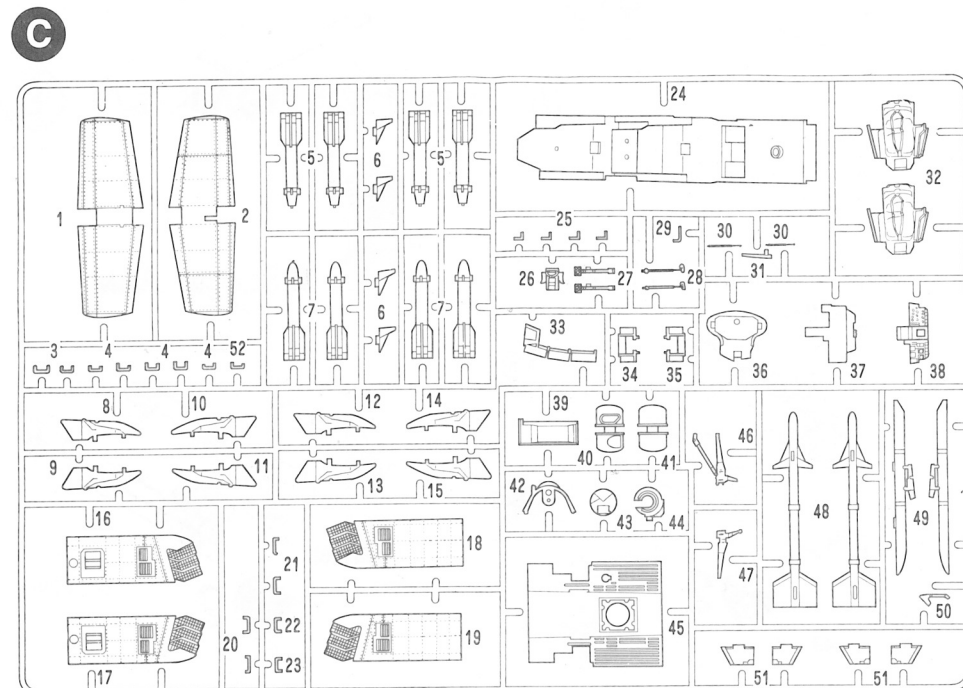
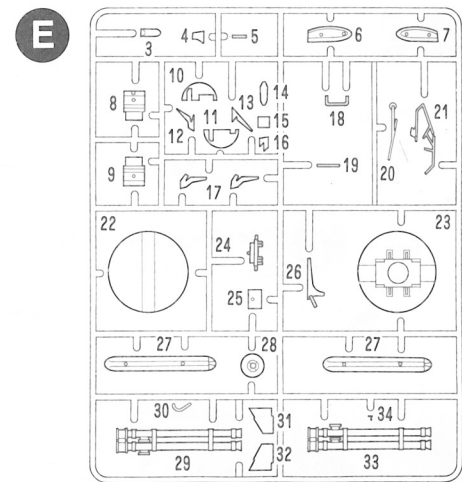
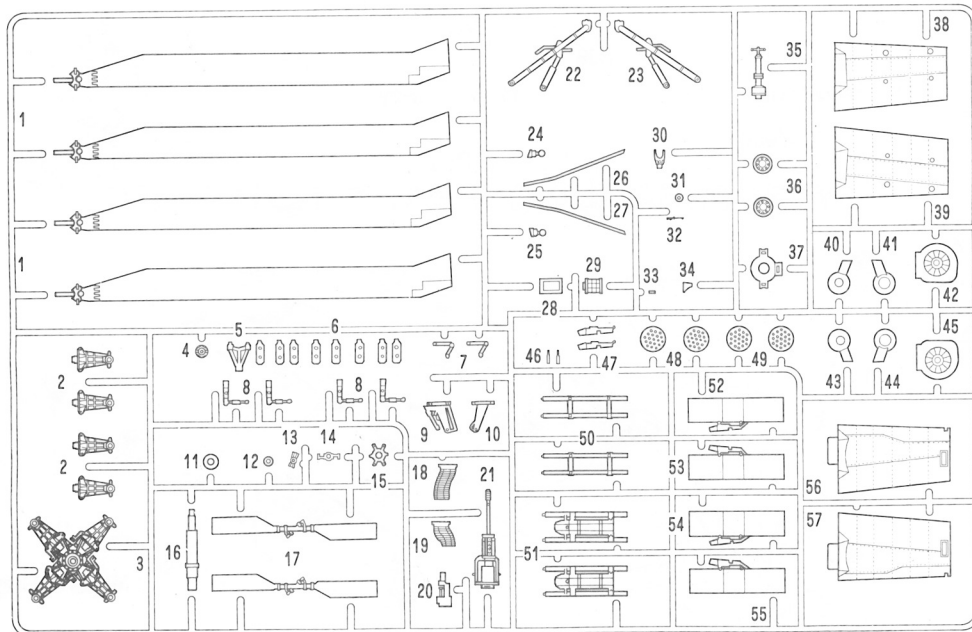
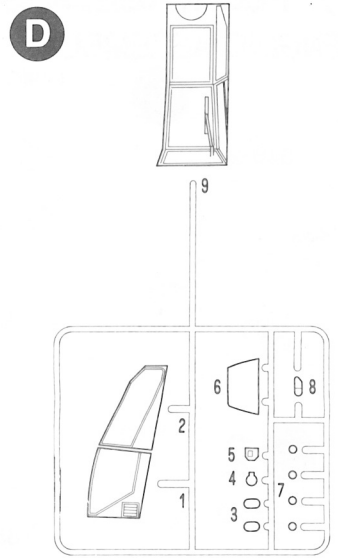
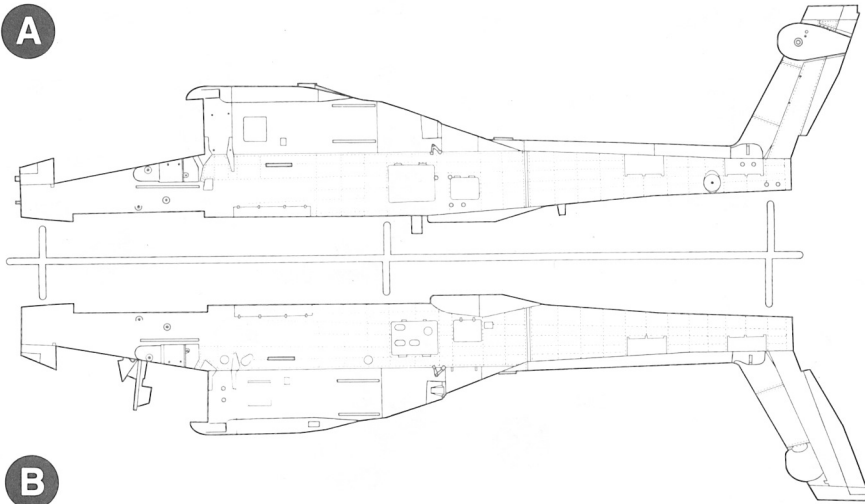
● Not Used No.15,16 Decals.

ENGLISH	FRENCH	GERMAN	SPANISH	ITALIAN
BLACK	NOIR	SCHWARZ	NEGRO	NERO
SILVER	ARGENT	SILBERN	PLATA	ARGENTO
GUNMETAL	METALLIC	METALLIC	METALICO	METALLICO
METALLIC	METALLIC	METALLIEK	METALICO	METALLICO
GRAY	GRIS	GRAU	GRIS	GRIGIO
RED	ROUGE	ROT	ROJO	ROSSO
BLUE	BLEU	BLAU	AZUL	BLU
GREEN	VERT	GRUN	VERDE	VERDE
CLEAR	CLAIR	KLAR	CLARO	CHIARO

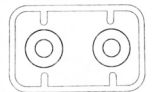
ACADEMY
HOBBY MODEL KITS

 Cement Parts Colier Kleben Pegar Incollare Colar Kleven	 DO NOT cement Ne pas colier Nicht kleben No pegar Non incollare Nao colar Niet kleven	 Cut away Couper Scheiden Cortar Tagliare Cortar Snijden	 Optional parts Choix Auswahlmoglichkeit Eleccion Scelta Opcao Keuze	 Repeat operation Reseter l'operation Vorgang wiederholen Ripetir la operacion Repitete Repitir a operacao Herhalen
---	---	--	---	--

PARTS LOCATING DIAGRAM



P.V.C. Tires



● Not Used: B22, B23, B25, B34, B35, C3 × 1, C6, C21, C22, C48, C49, C51, E3, E17

ACADEMY
HOBBY MODEL KITS

Copyright Academy Plastic Model Co., Ltd.
273-64, Suyu-dong, Kangbuk-ku, Seoul, Korea FAX: 82-2-997-3003