



VERLINDEN PRODUCTIONS
 Ondernemersstraat, 4
 B-2500 Lier/BELGIUM

T1E3 MINEROLLER

M4 Sherman

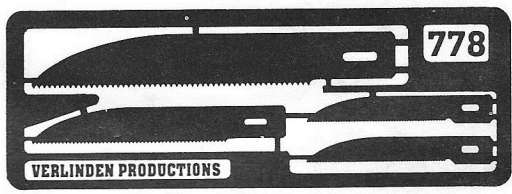
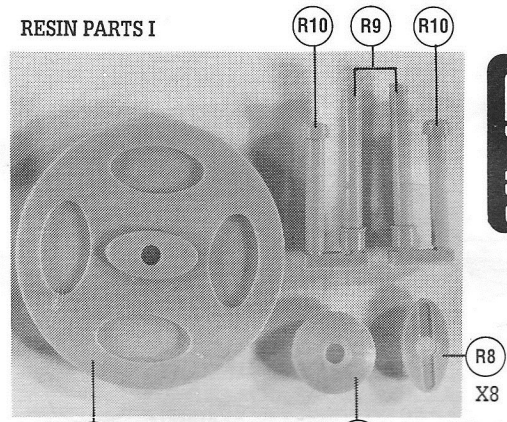
Conversion Set

1:35
827

CE **MADE IN BELGIUM**

AGE 14 AND UP/ ET PLUS

RESIN PARTS I



Remove carriers with VP Razor Saw (Set 778)
 Available in the VP model accessory range

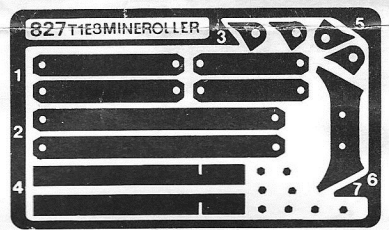
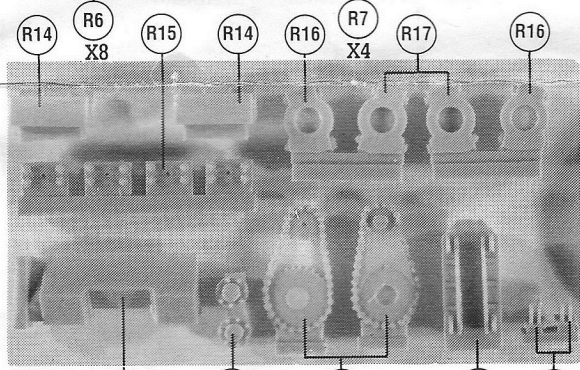
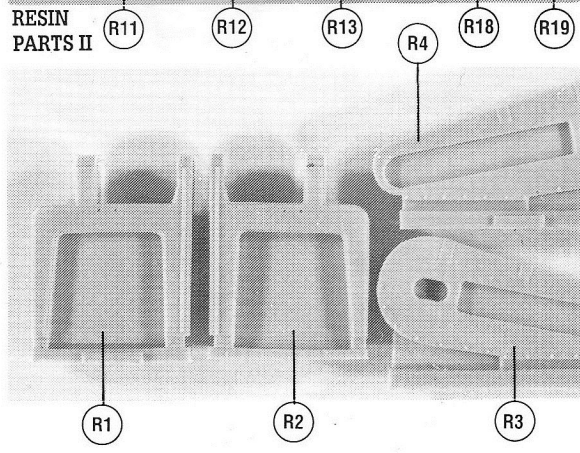
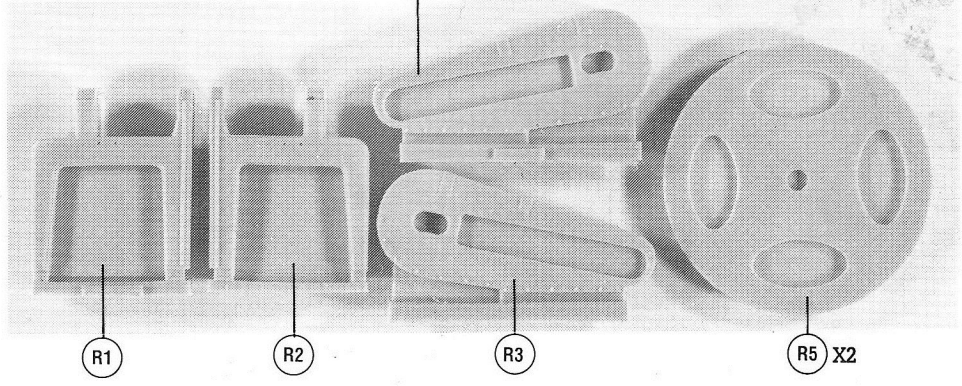


PHOTO-ETCHED PARTS

RESIN PARTS II

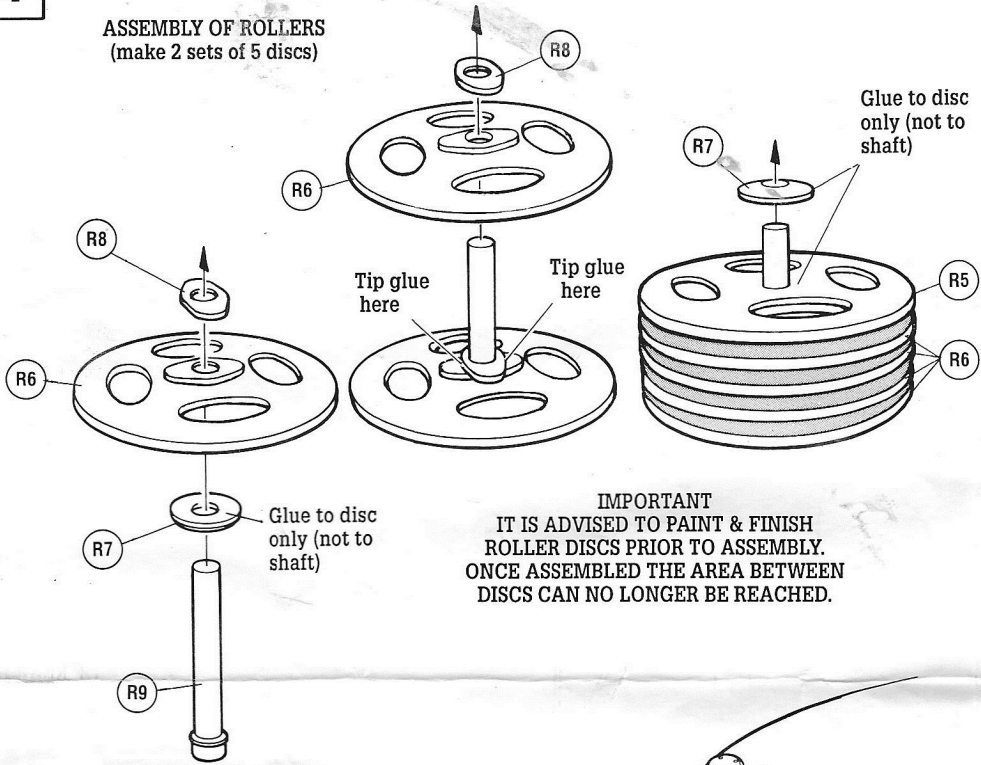


RESIN PARTS III

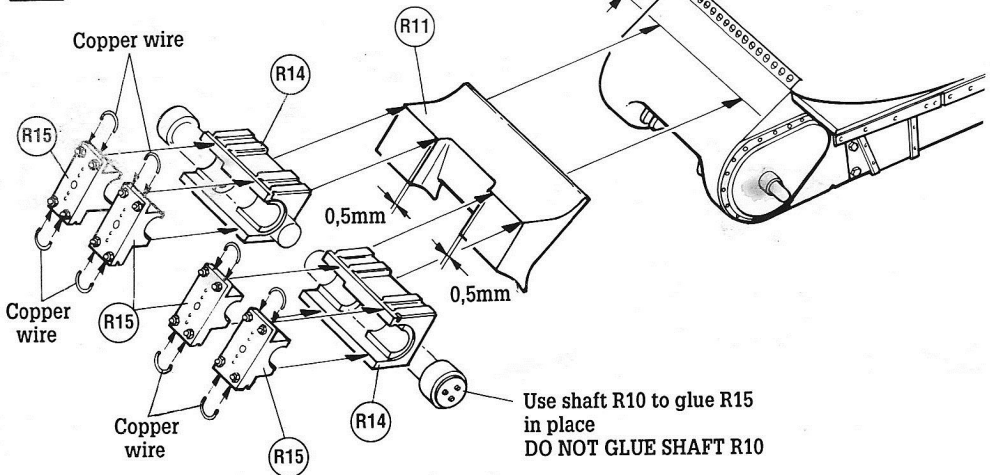


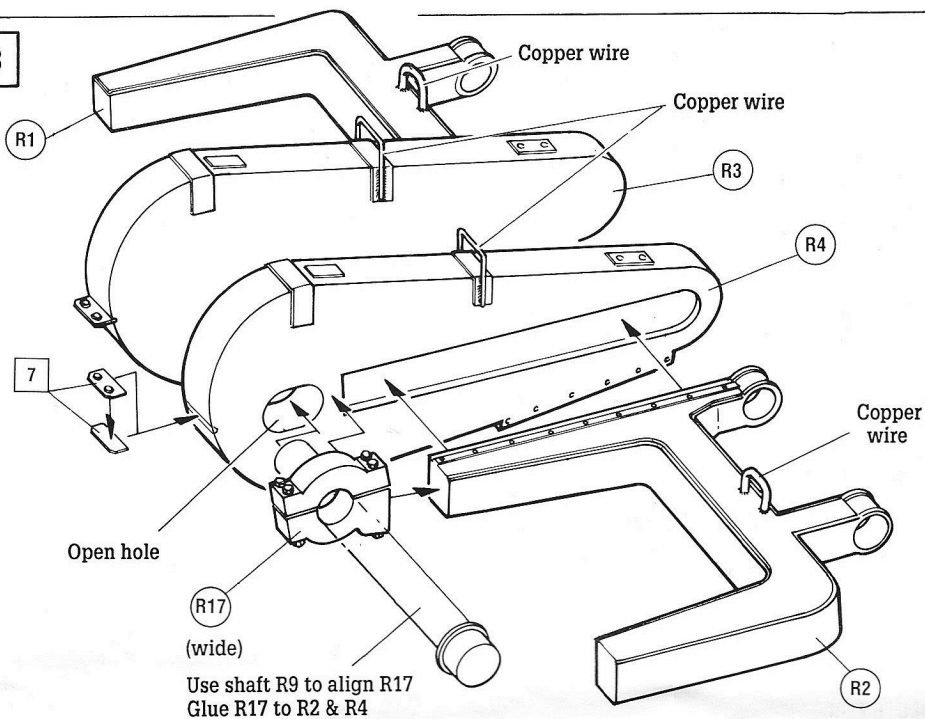
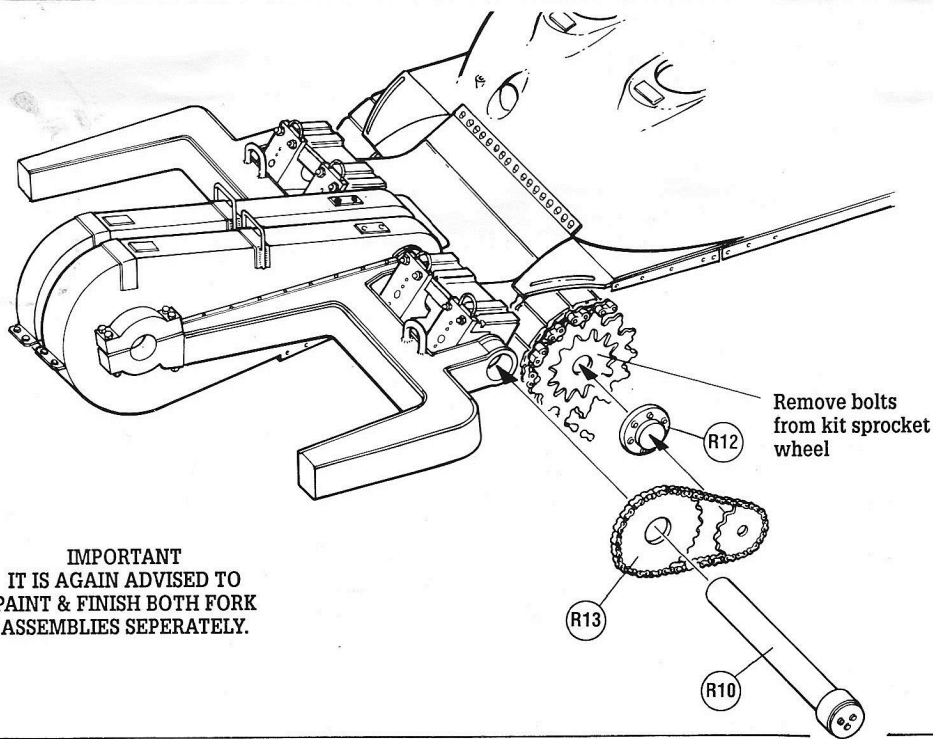
1

ASSEMBLY OF ROLLERS (make 2 sets of 5 discs)

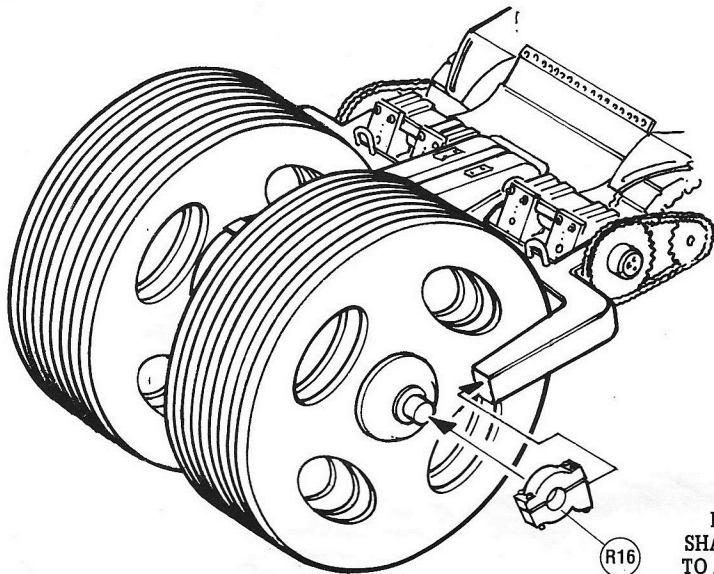


IMPORTANT
IT IS ADVISED TO PAINT & FINISH
ROLLER DISCS PRIOR TO ASSEMBLY.
ONCE ASSEMBLED THE AREA BETWEEN
DISCS CAN NO LONGER BE REACHED.

2

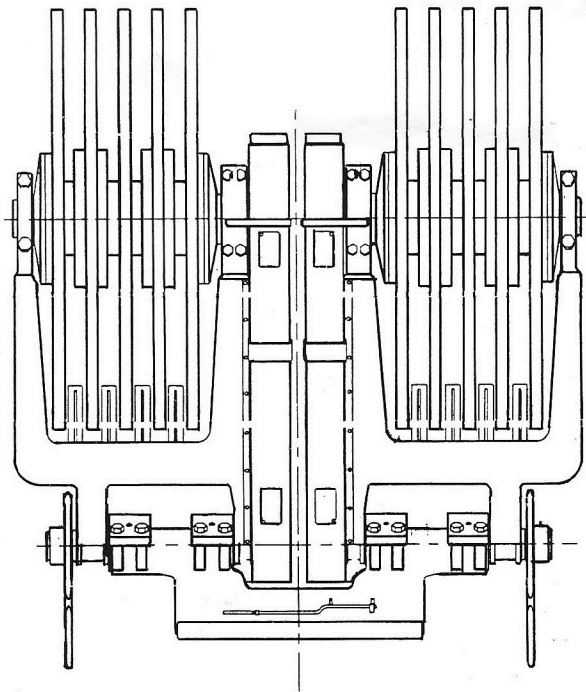
3**4**

IMPORTANT
IT IS AGAIN ADVISED TO
PAINT & FINISH BOTH FORK
ASSEMBLIES SEPERATELY.



COMPLETE FORK ASSEMBLY
(TOP VIEW)

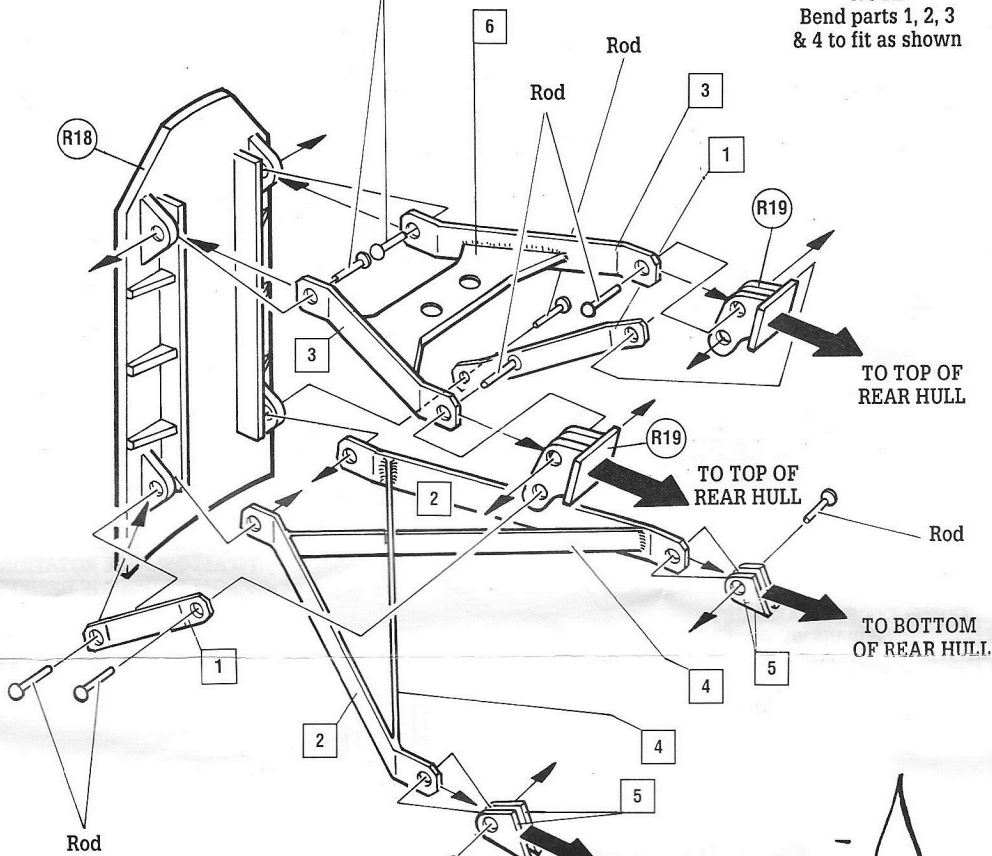
DO NOT GLUE R16 TO
SHAFT BUT TO R1/R2 ONLY
TO ALLOW FREE ROTATION
OF ROLLER DISCS IF DESIRED.



Rod

NOTE

Bend parts 1, 2, 3
& 4 to fit as shown



TO TOP OF REAR HULL

TO TOP OF REAR HULL

TO BOTTOM OF REAR HULL

TO BOTTOM OF REAR HULL

ASSEMBLING PUSHER BOARD WITH ENCLOSED ROD

1/ Hold rod close to candle flame until end forms

2/ Insert length in hole

3/ Hold hot knife some distance from rod end until it forms

