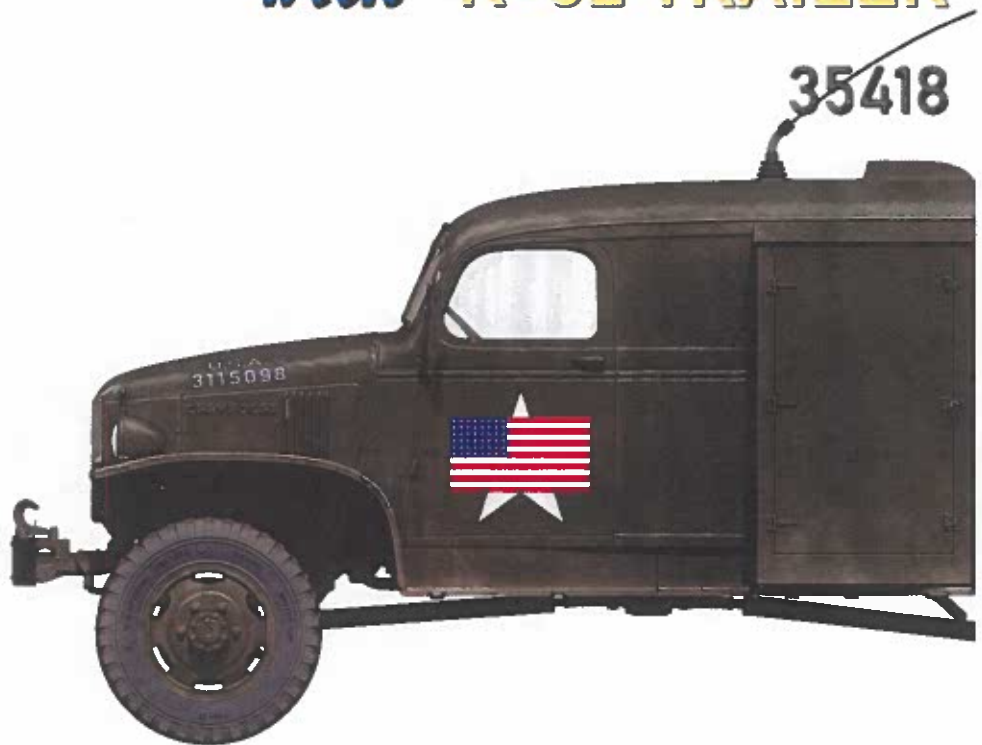


INTERIOR KIT
INTERIOR IS ACCURATELY REPRESENTED

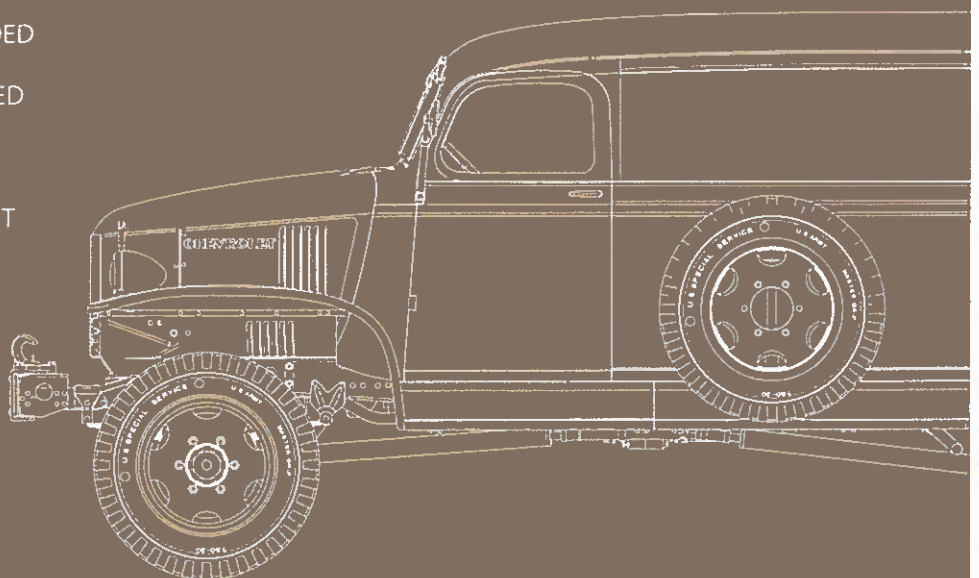
WW II MILITARY MINIATURES SERIES

U.S. ARMY K-51 RADIO TRUCK with K-52 TRAILER



GENERAL INSTRUCTION

- ▶ HIGHLY DETAILED PLASTIC MODEL KIT
- ▶ PHOTO-ETCHED PARTS INCLUDED
- ▶ CLEAR PLASTIC PARTS INCLUDED
- ▶ DECAL SHEET FOR 5 OPTIONS
- ▶ K-52 TRAILER WITH POWER UNIT PE-95 ARE INCLUDED
- ▶ RADIO SET SCR-299 INCLUDED
- ▶ DOORS CAN BE ASSEMBLED IN OPEN OR CLOSED POSITION
- ▶ HIGHLY DETAILED ENGINE COMPARTMENT, TRANSMISSION, BRAKE, STEERING SYSTEMS



SCALE
1:35



U.S. ARMY K-51 RADIO TRUCK with K-52 TRAILER

INTERIOR KIT
INCLUDES 16 ACCURATELY REPRODUCED PARTS

SCALE
1:35

5 Corps Signals Unit, 2nd Polish Corps. Italy 1944/1945





PAINTING GUIDE

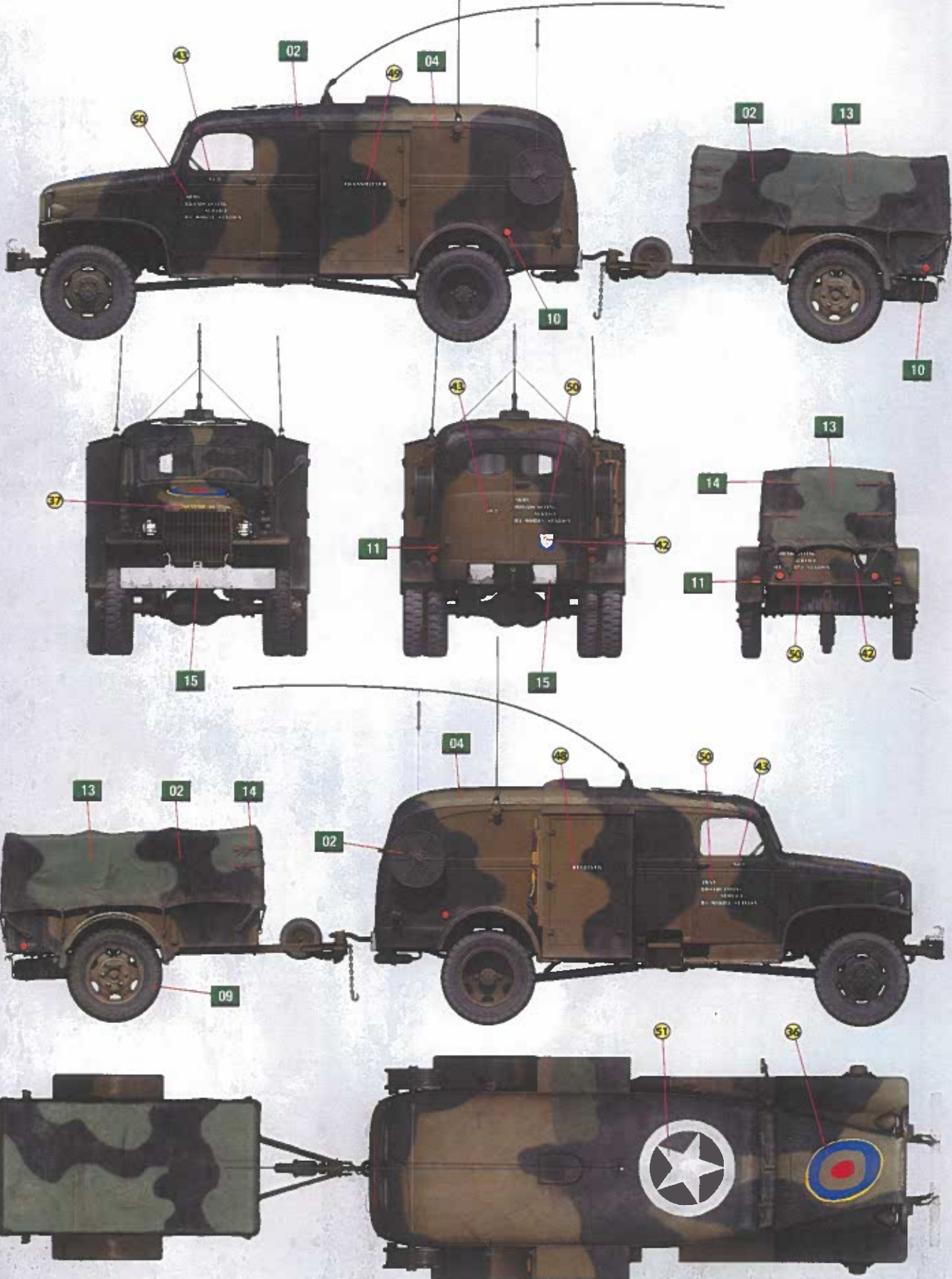
U.S. ARMY K-51 RADIO TRUCK with K-52 TRAILER

INTERIOR KIT

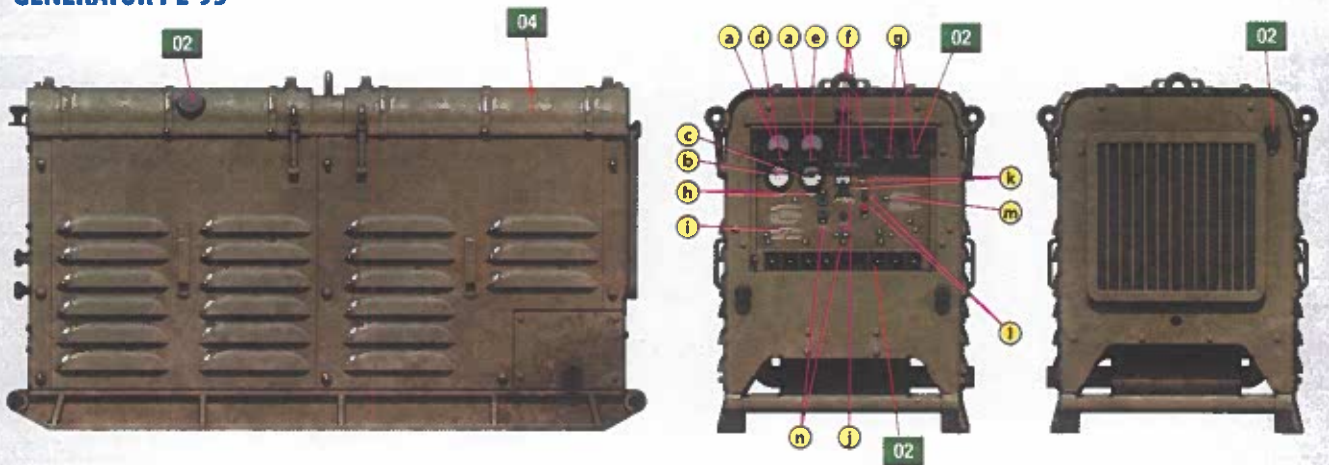
SCALE
1:35

MiniArt 35418

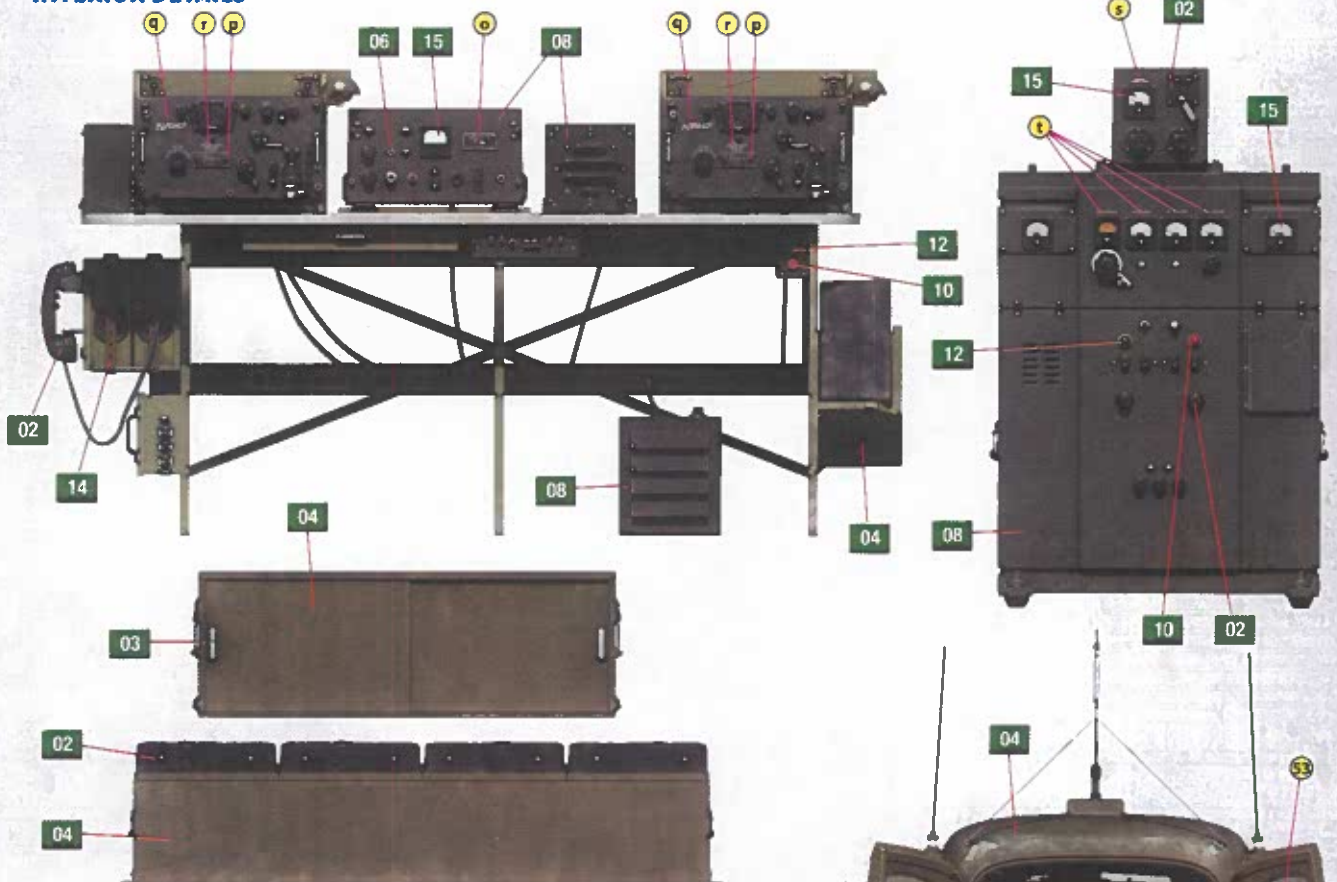
1 British Forces Radio Station, 8th Army Sector. Italy, October 1944



371003



INTERIOR DETAILS



COLOR CHART

No	Color	Valejo	Mr. Color	AK RC	Mission Models	AMMO MIG	Tamiya	Color name
01		71.061	C-013	RC-249	MMP-072	A.MIG-0069	XF-75	Grey
02		71.057	C-033	RC-001	MMP-047	A.MIG-0046	XF-01	Black
03		71.062	C-080	RC-020	MMM-006	A.MIG-0194	XF-16	Aluminium
04		71.043	C-027	RC-282	MMP-059	A.MIG-0237	XF-04	Olive Drab
05		71.072	C-028	AK-478	MMM-002	A.MIG-0191	XF-68	Steel
06		71.069	C-131	AK-709	MMW-001	A.MIG-0041	XF-10	Rust
07		71.063	C-008	RC-020	MMM-006	A.MIG-0196	X-11	Silver
08		71.073	C-078	RC-015	MMM-001	A.MIG-0045	XF-84	Gun Metal
09		71.251	C-137	RC-022	MMP-040	A.MIG-0033	XF-86	Tire Black
10		71.003	C-003	RC-006	MMP-003	A.MIG-0049	XF-07	Red
11		71.063	C-068	RC-009	MMP-005	A.MIG-0129	X-6	Orange
12		71.086	C-136	RC-047	MMP-009	A.MIG-0060	XF-05	Green
13		71.306	C-062	RC 048	MMP-046	AMMO-F512	XF 65	Pale Green
14		71.041	C-310	RC-036	MMP-033	A.MIG-0076	XF-10	Brown
15		71.001	C-082	RC-004	MMP-001	A.MIG-0060	XF-02	White
16		71.027	C-043	RC-030	MMP-076	A.MIG-0037	XF-79	Wood
17		71.044	C-127	RC-255	MMP-079	A.MIG-0217	XF-22	Light Green Khaki



UWAGA

Przy stosowaniu kleju i farb wszystkie prace należy wykonywać w przewiewnym miejscu z dala od źródeł ognia. Oddziel części od wlewów nożem lub innym odczem narzędzie. Oczyść lampę błyskową i wytnij punkty pilnikiem igłowym i papier ścierny. Złóż modele zgodnie z schemat montażu. Dla ułatwienia montażu każda część jest oznaczona numerem. Po złożeniu zestawu mogą pozostać niewykorzystane części.

УВАГА

При використанні клею та фарб всі роботи проводити подалі від джерел вогню у приміщенні, що добре провітрюється. Деталі відокремлювати від литейних форм ножем або іншим ручним інструментом. Зачистити обліт і місця зрізу за допомогою наждачка та наждачного паперу. Будівництво моделі виконувати згідно зі схемою. Для зручності побудови кожної деталі позначена номером. Після складання можуть залишитися невикористані деталі.

CAUTION

When you use glue or paint, do not use near open flame, and use in well ventilated room. When you take parts off from the runner frame, use modeling scissors or cutter. See the bottom of this column for the meaning of symbols. Extra details can remain after assembling of the kit.



POWTÓRZ DWA RAZY
MAKE 2x2x
2 TEILE FERTIGEN
EFFECTUER 2 PIECES
FARE DUE PEZZI
TEE 2 KPL.
GOR 2 ST.
КІЛЬКІСТЬ РАЗІВ



NIE UZYWAJ KLEJU
DO MOT CEMENT
NOMT KLEBEN
NE PAS COLLER
NON INCOLLARE
ELIMAA
LIMAAEI
НЕ КЛЕЙТИ



OPCJE
OPTIONAL
NACH BELIEBEN
FACULTATIVO
FACOLTATIVO
VALIKOHVARAMEN
VALIBAR
ВАРИАНТИ



ZROBK OZURE
OPEN HOLE
OFFHEN
FAIRE UN TROU
FORO APERTO
AVIA REKA
OPPIHA HAET
ЗРОБИТИ ОТВІР



ODCIAC
REMOVE
ENTFERNEN
REITER
SEPARARE
SEPARARE
POSTA
AVIÄÄSNA
BUDIPISATI



ZARZYĆ SZCZEGÓŁY
ANNEAL THE PART
GLÜCKENWISSEL
PARTIE DE RECUIT
PARTE RECOCIDA
HEIKUTTAA OSA
BUDIPISATI DETALJ



ZGINAC
BEND
BITTE BIEGEN
PLIER STR. VOUS PLAIT
PIEGARE
TAITA
BOCKA
BIEGUTY



ZROB TO SAM
SCRATCH-BUILD
AM MEISTEN ZU MACHEN
FAIRE LE PLUS
RENDITI
TEE ITSE
GOR OIG SAALV
SPOBITH SAMOMY

PARTS

A

Bf

Bcx2

Ce

Ba x2

Decal Sheet

Ek

Em

Fb

Fd

Eb

Ff

PAR

Bk

Cg

Ch

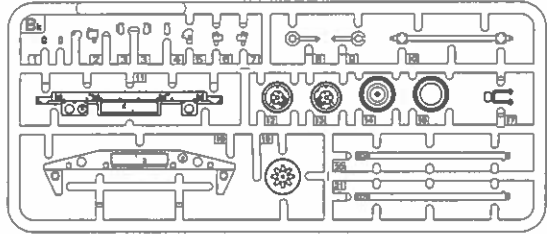
Cf

Dc

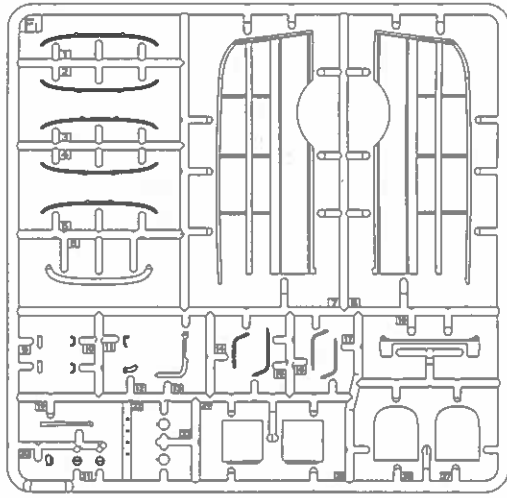
Fh

PARTS

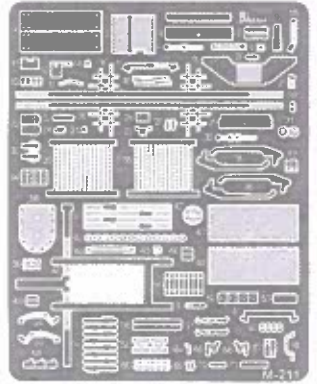
Bk



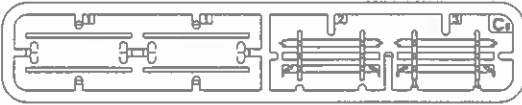
Fi



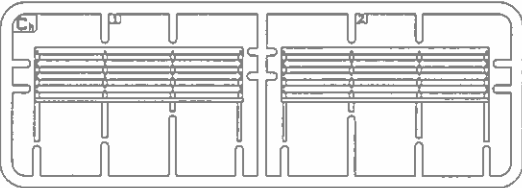
PE parts M211



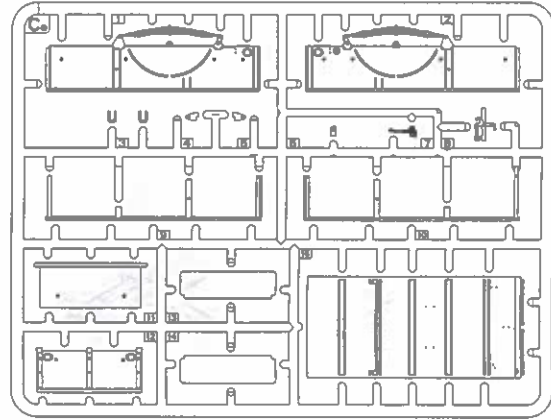
Cg



Ch



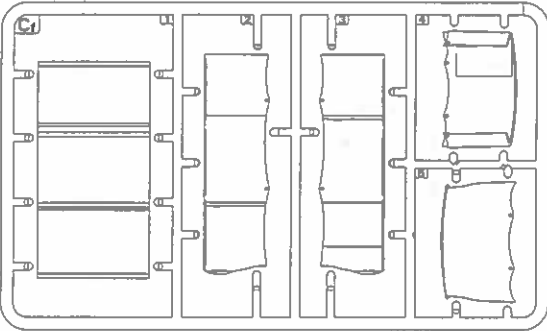
Ce



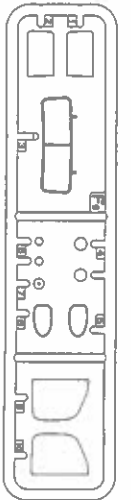
Bm x2



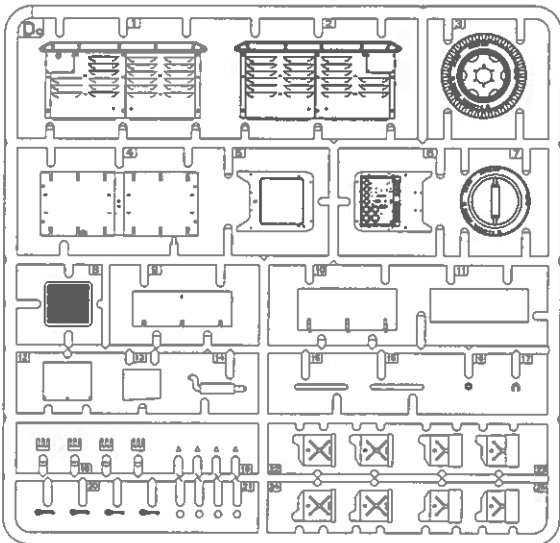
Cf



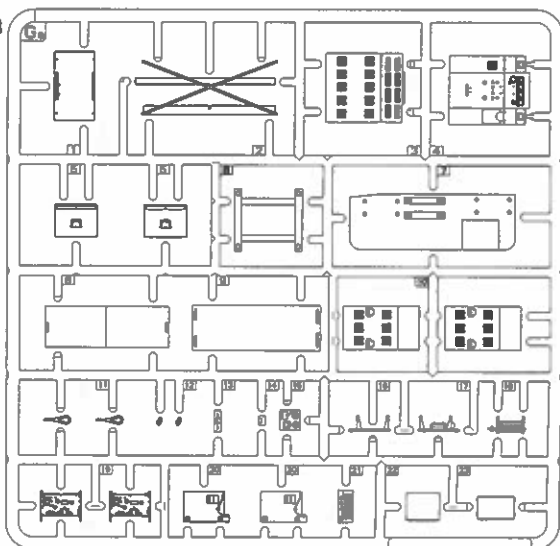
Fg (Clear Parts)



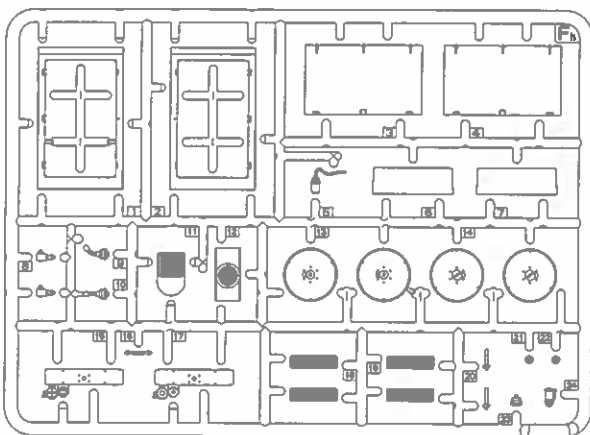
Dc



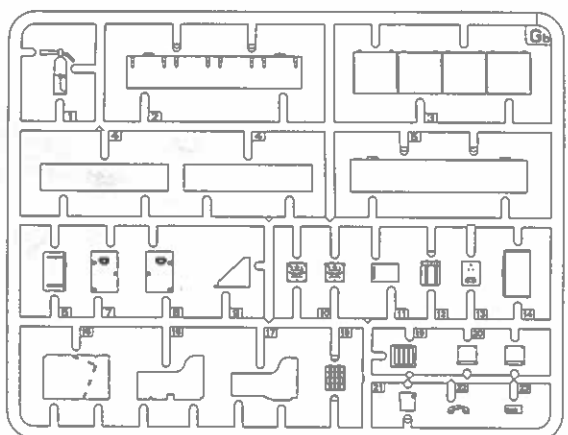
Ga



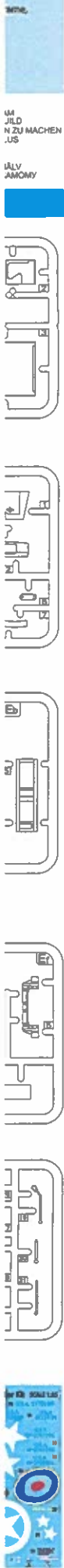
Fh

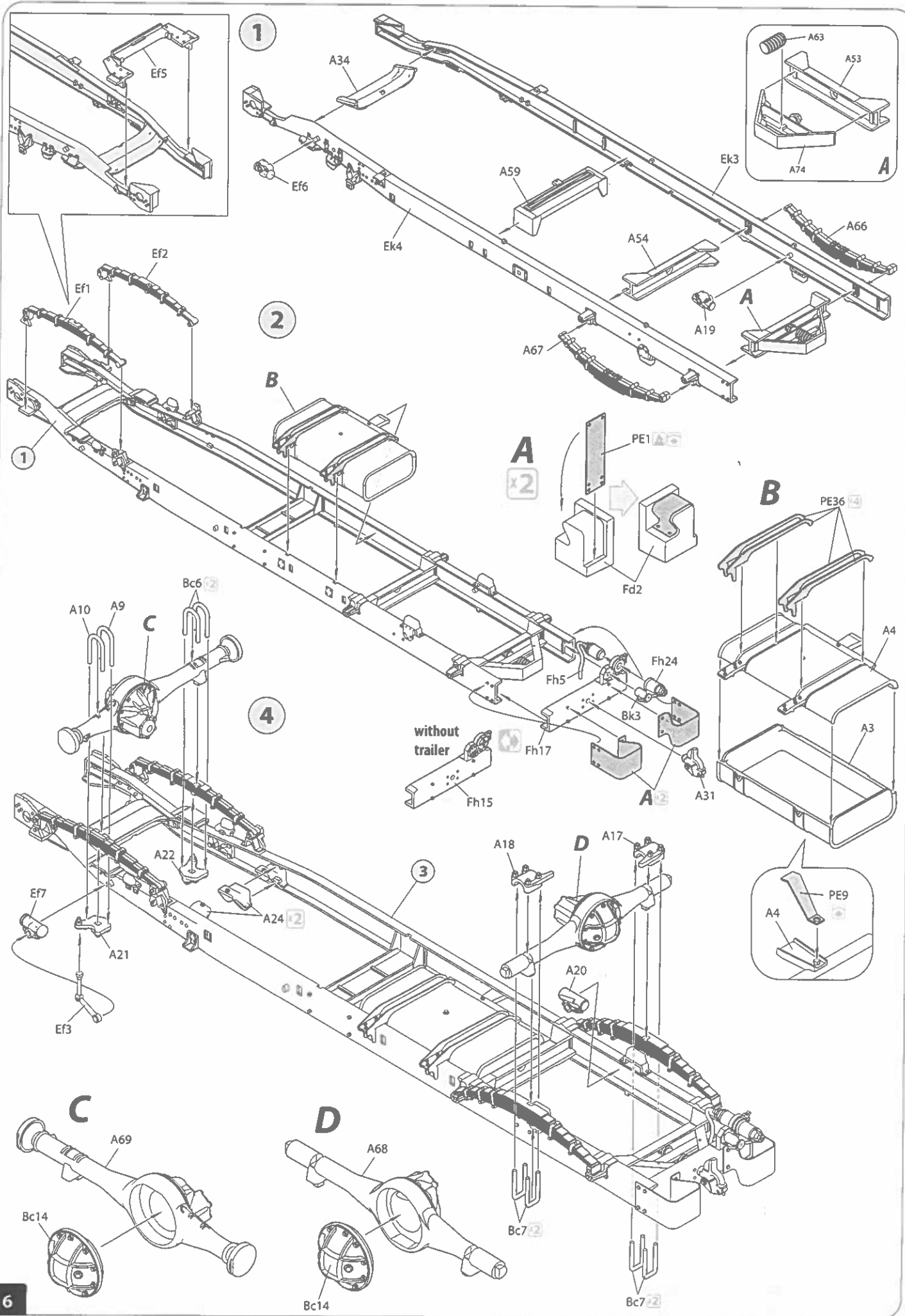


Gb



Chaine





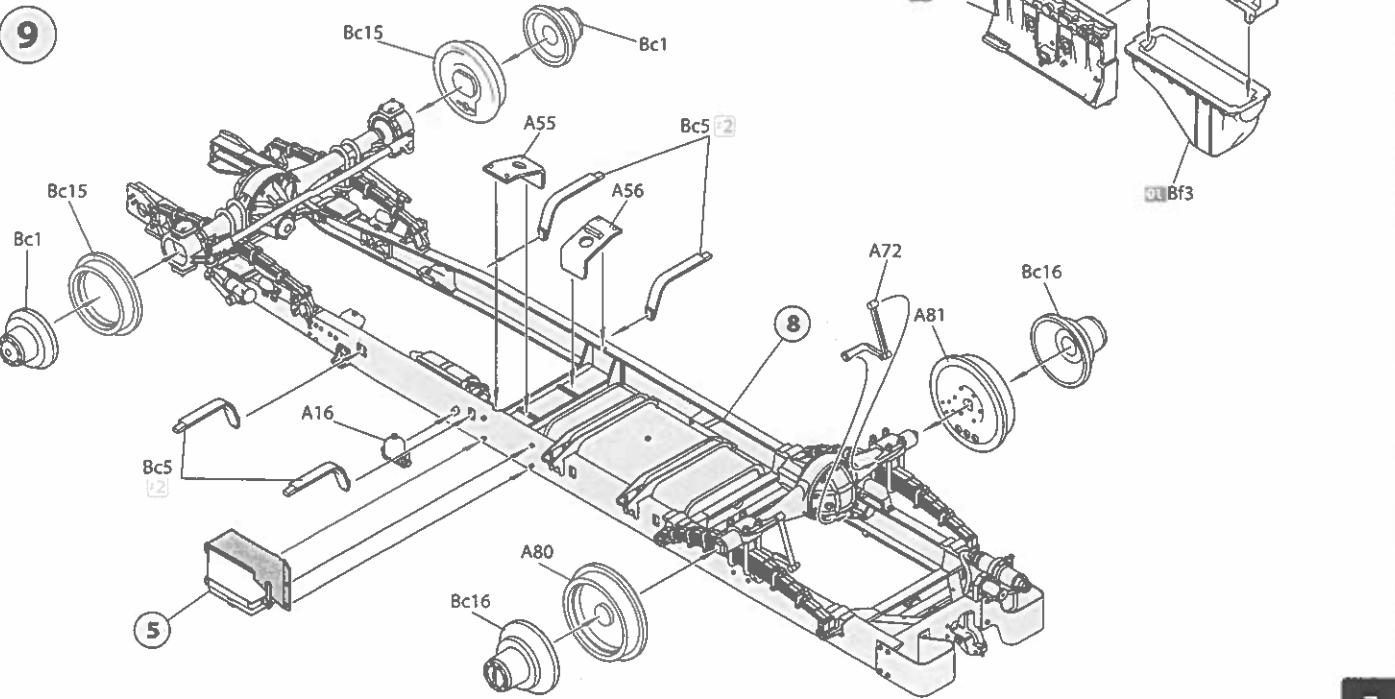
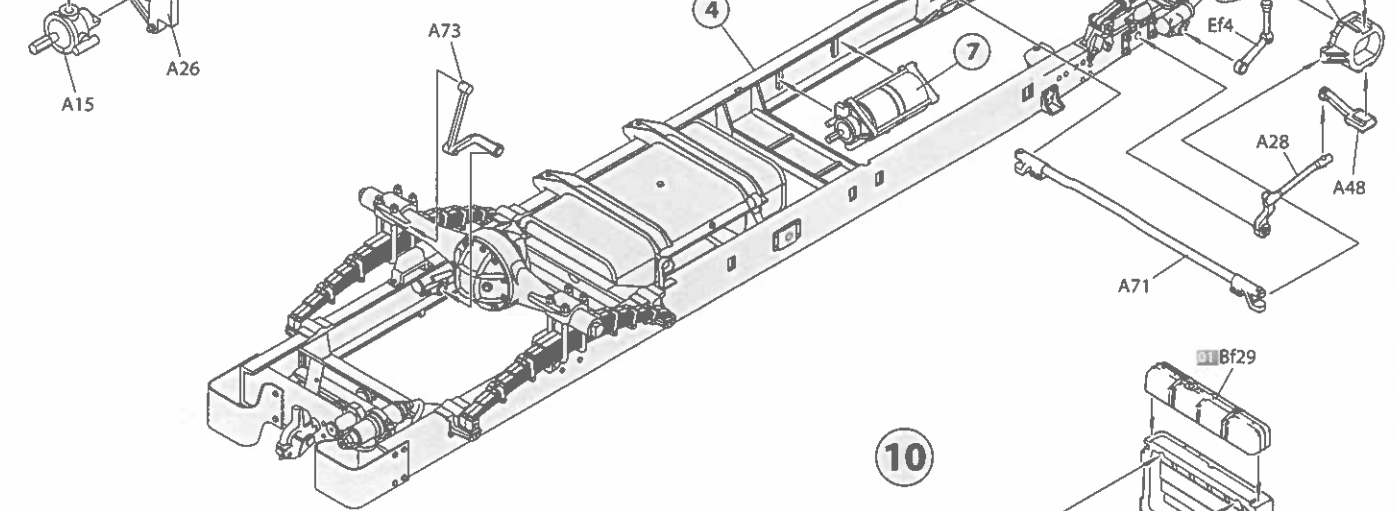
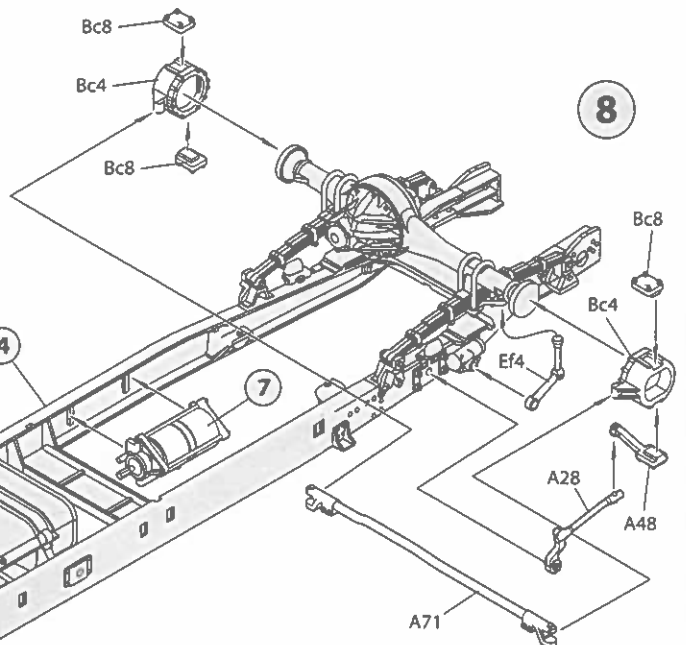
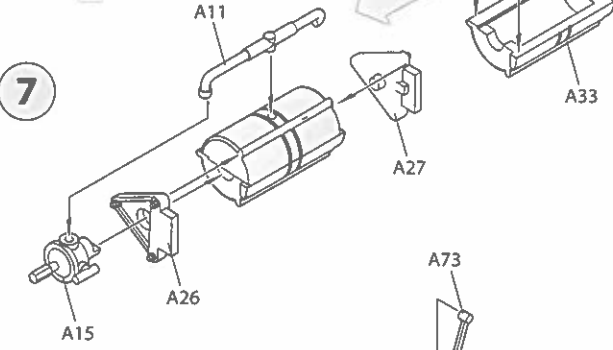
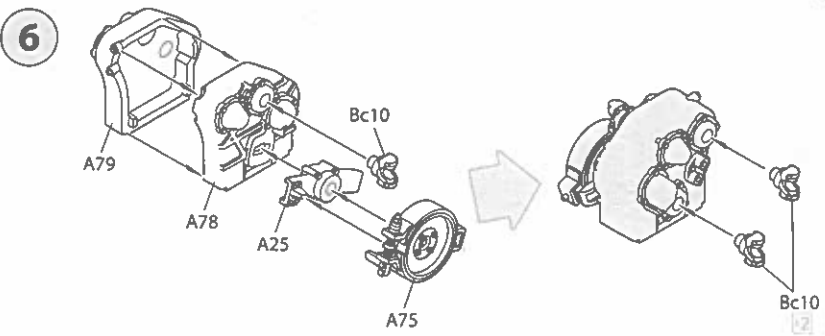
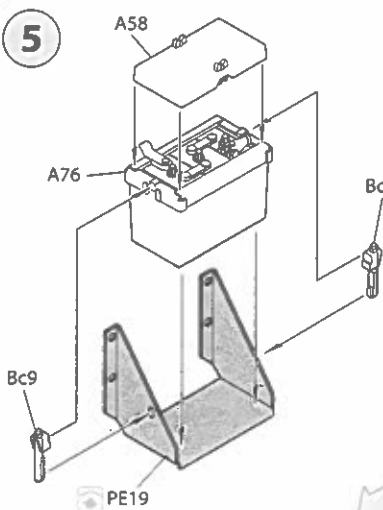
5

7

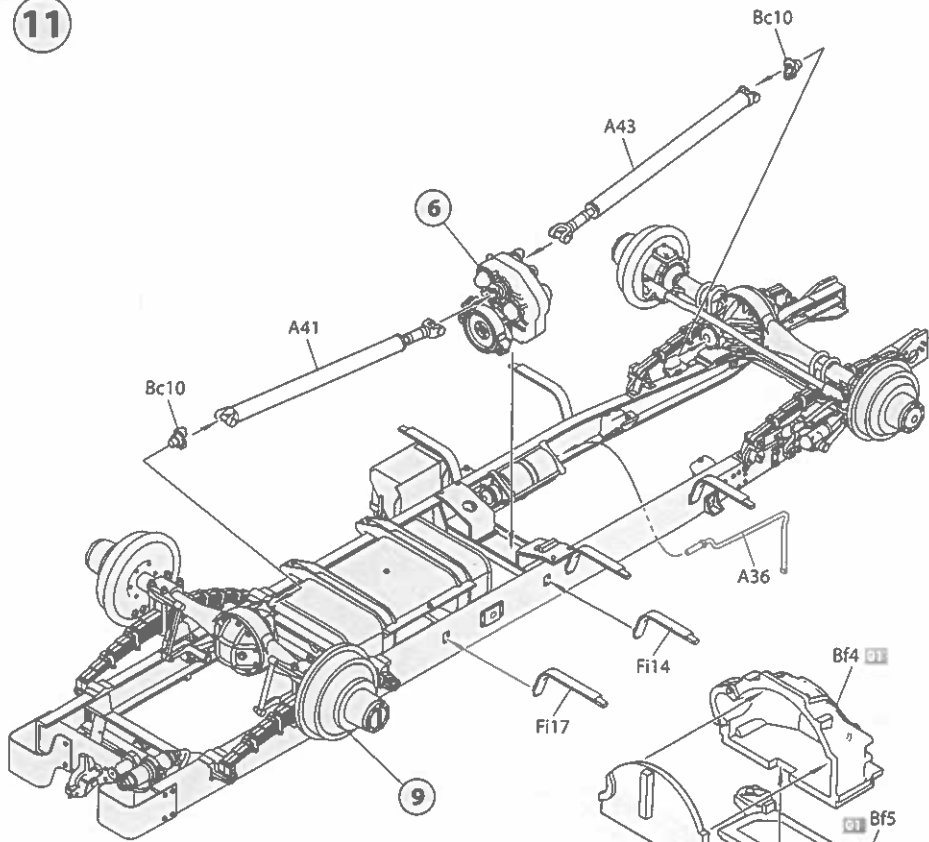
9



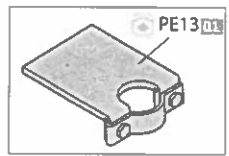
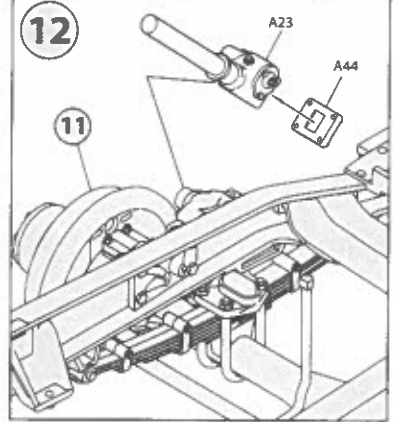
6



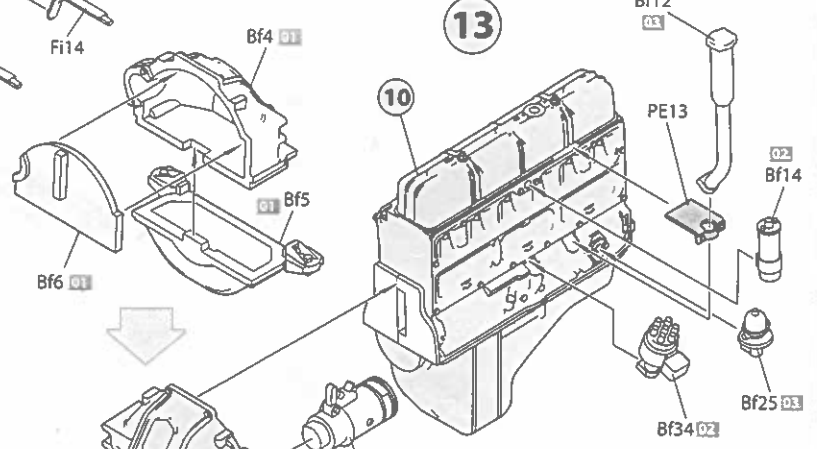
11



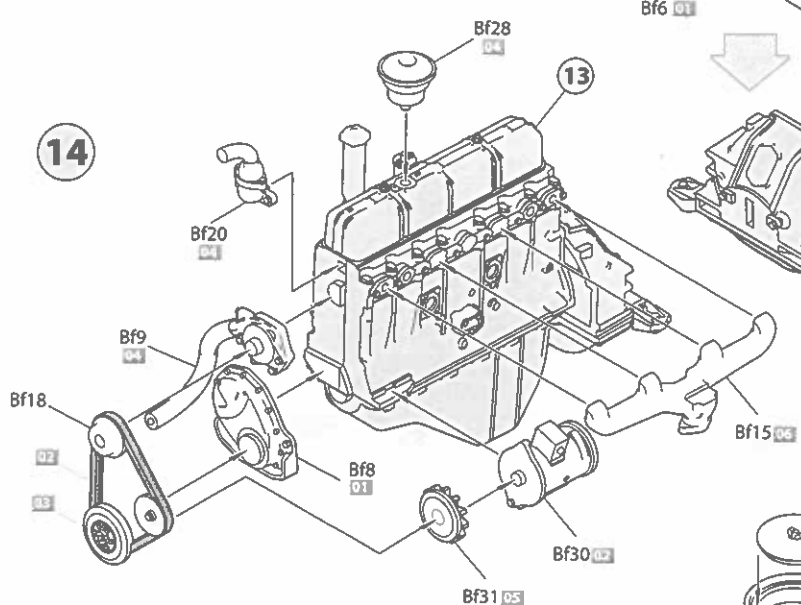
12



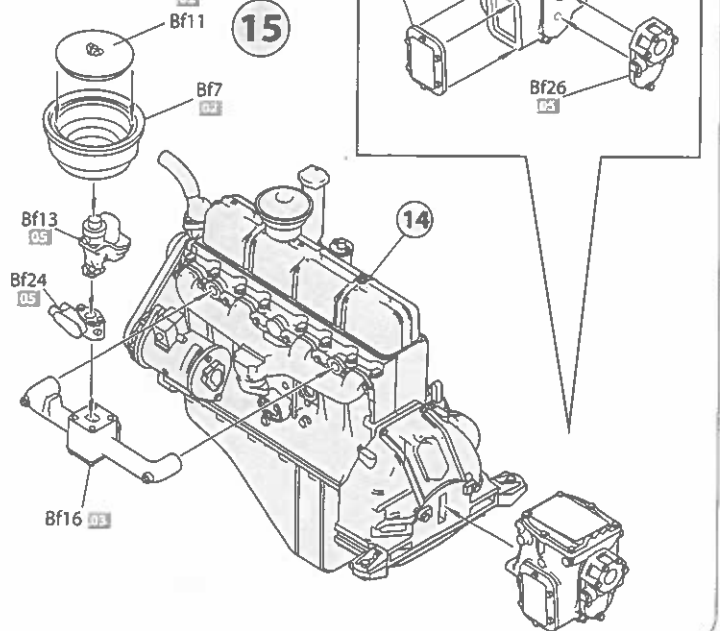
13



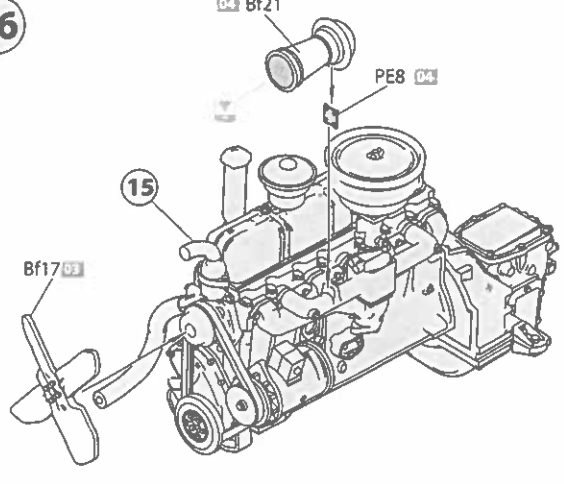
14



15



16

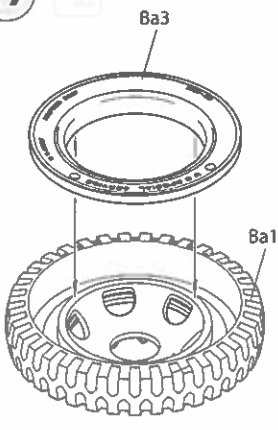


17

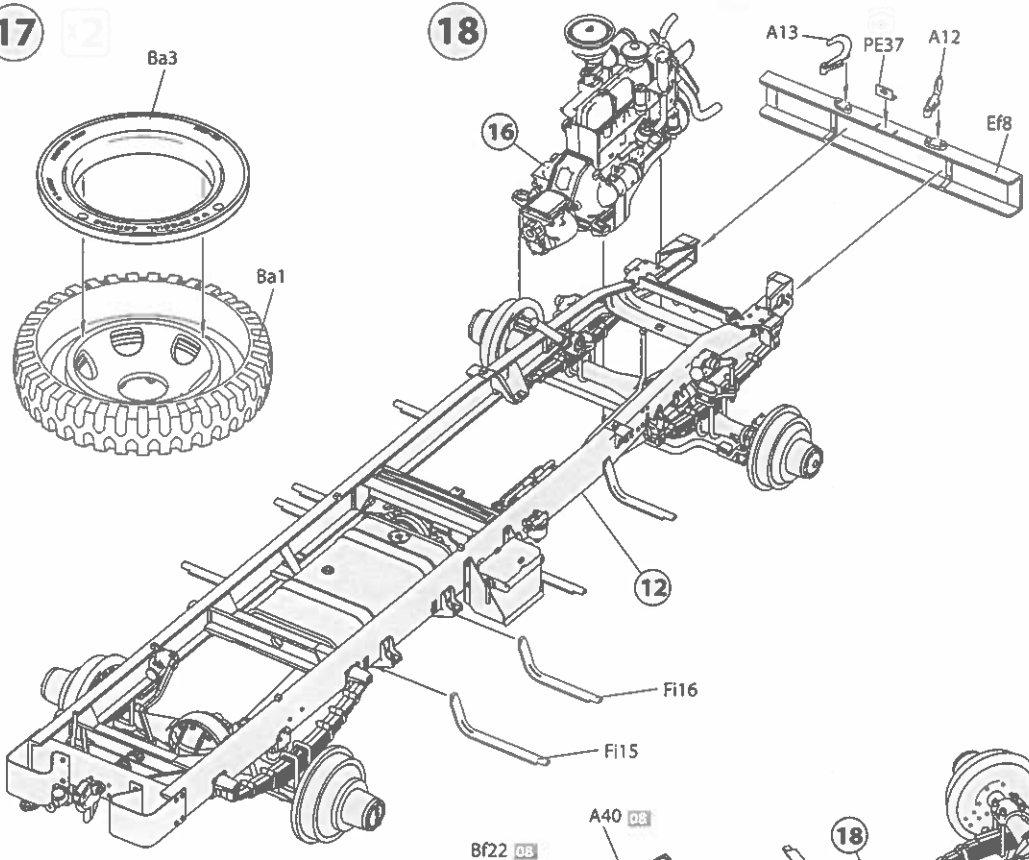
20

17

2

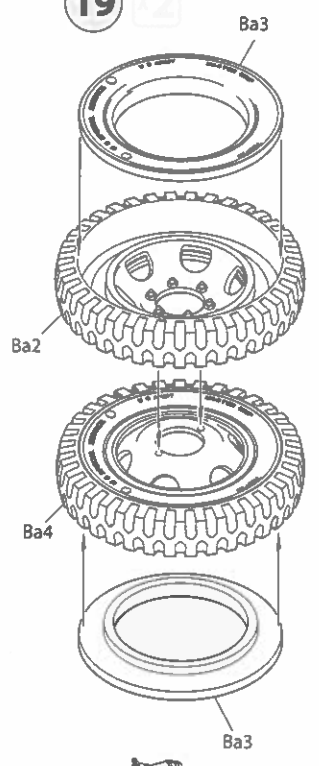


18

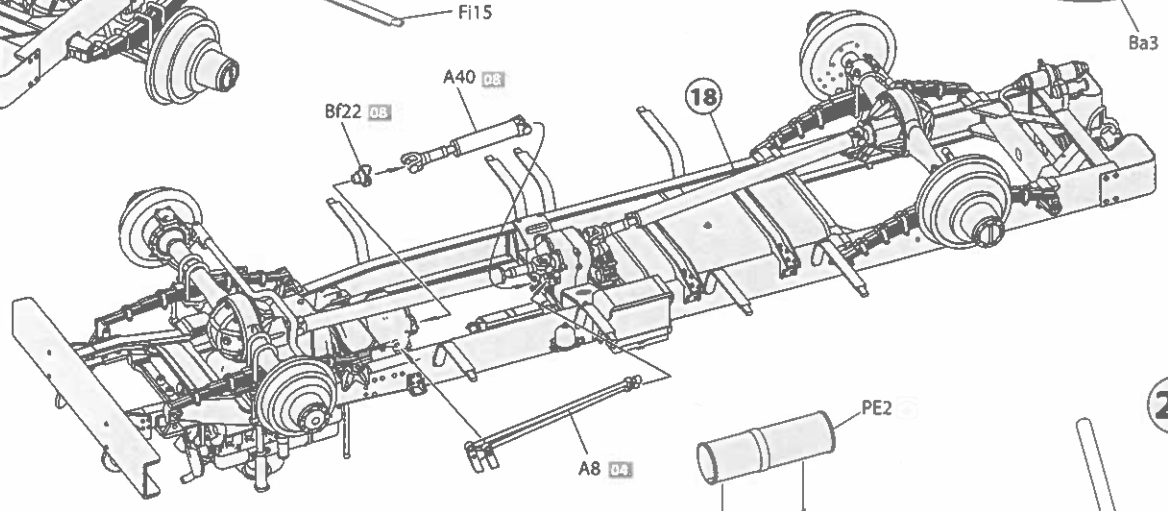


19

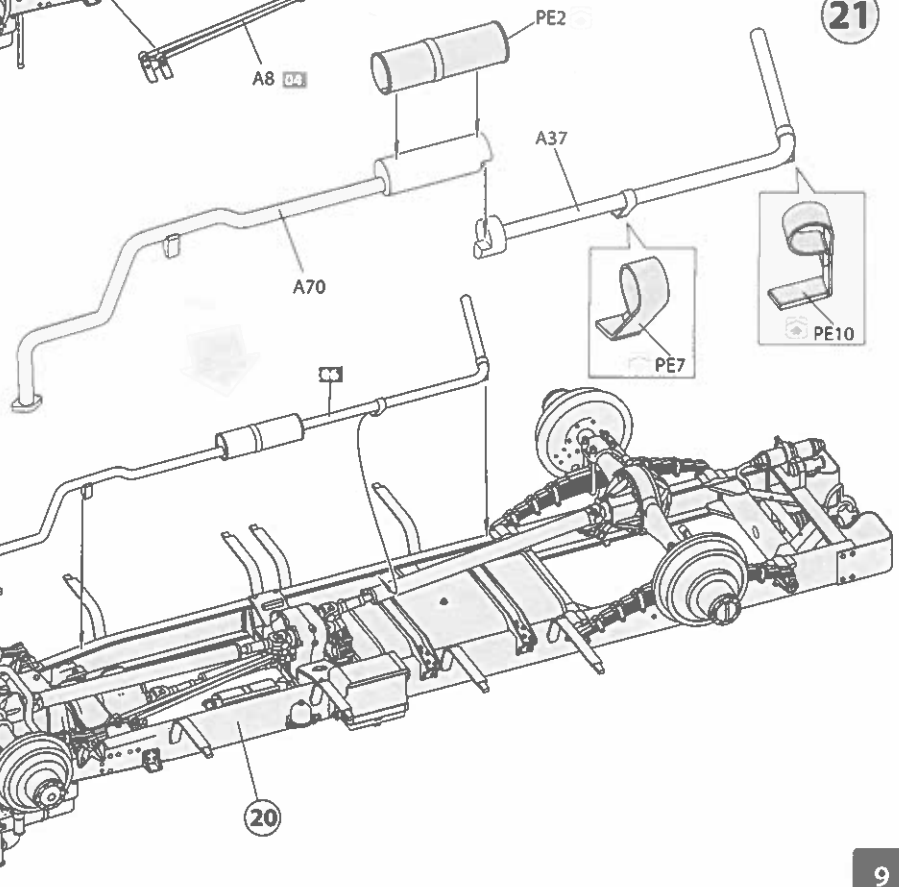
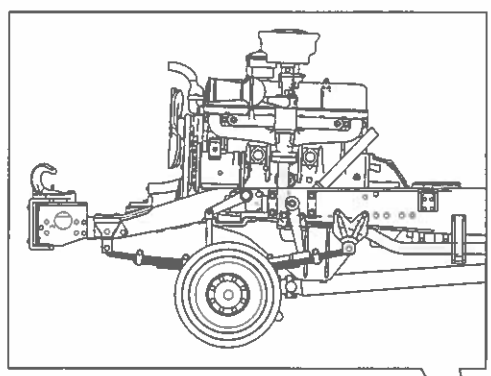
2



20



21



A44

11

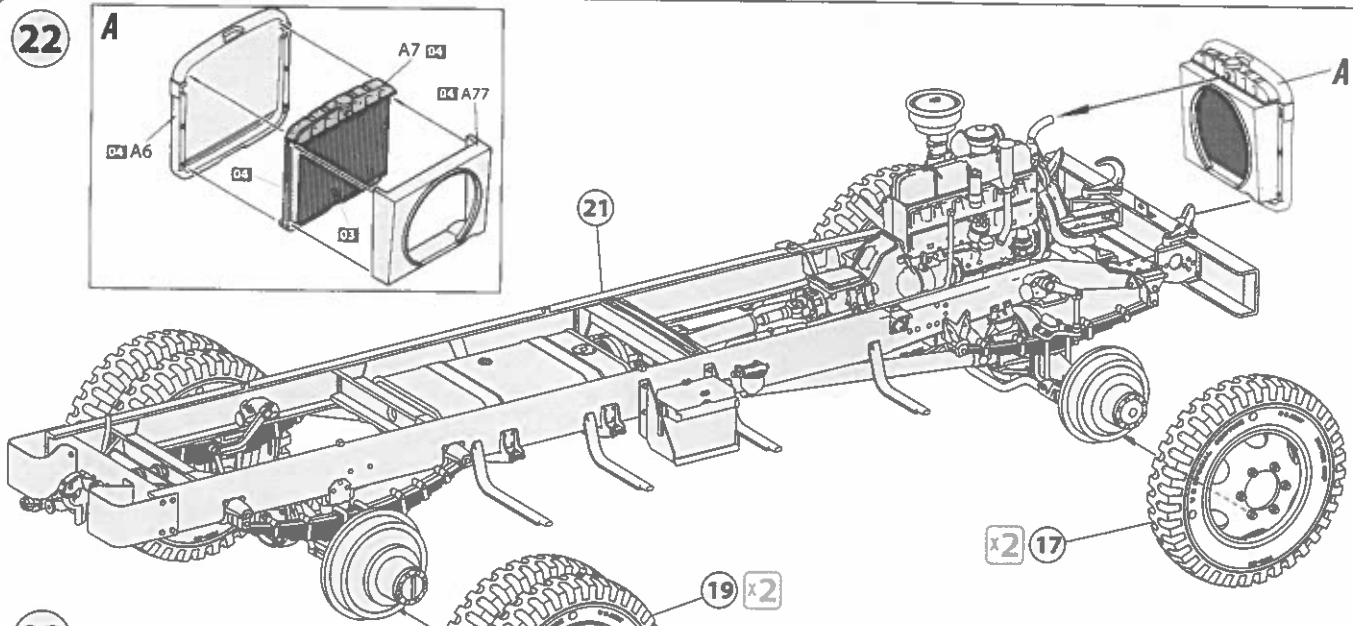
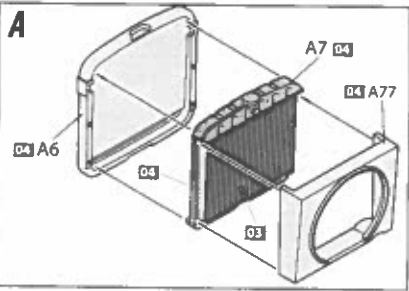
Bf14

f25 01

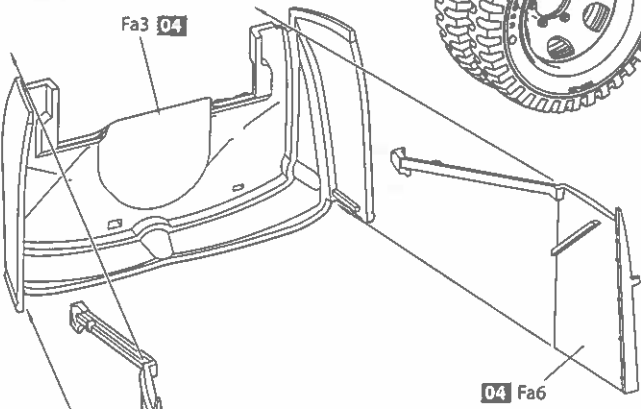
7

f33

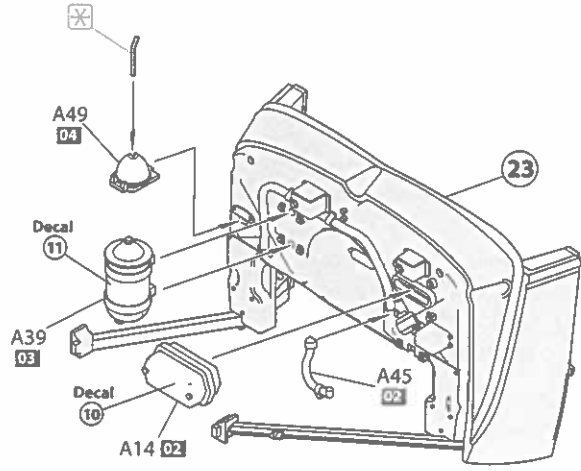
22



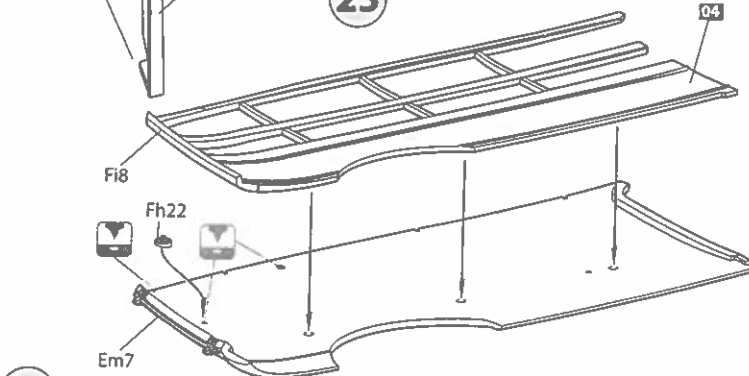
23



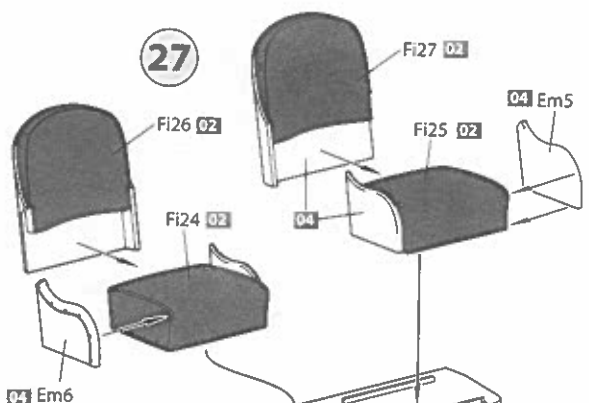
24



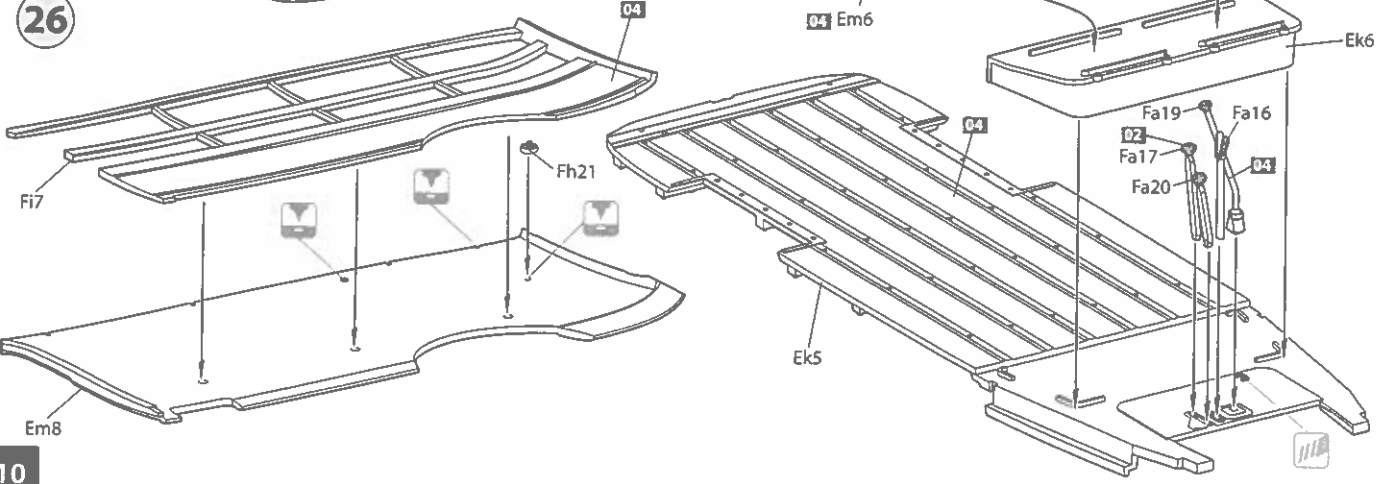
25



27



26



28

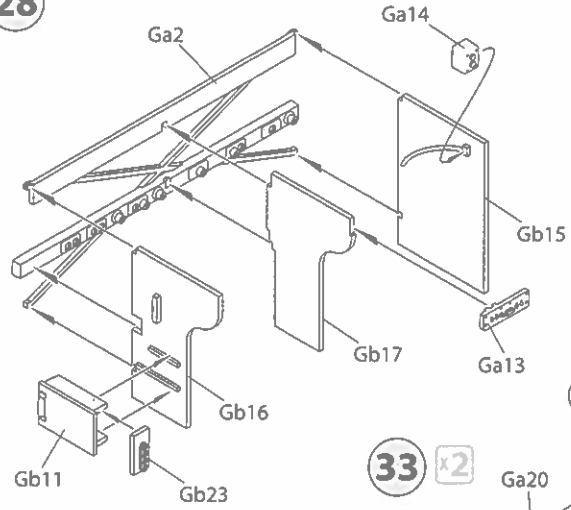
32

35

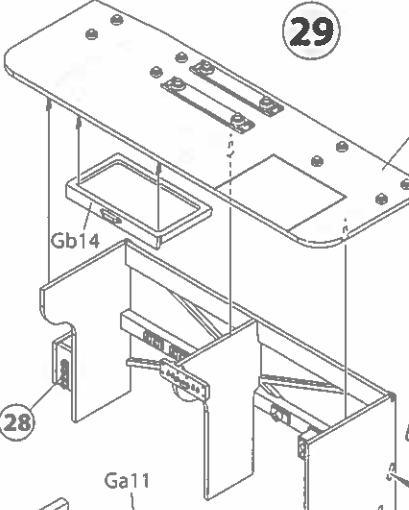
Ga



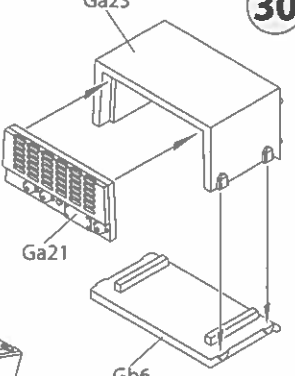
28



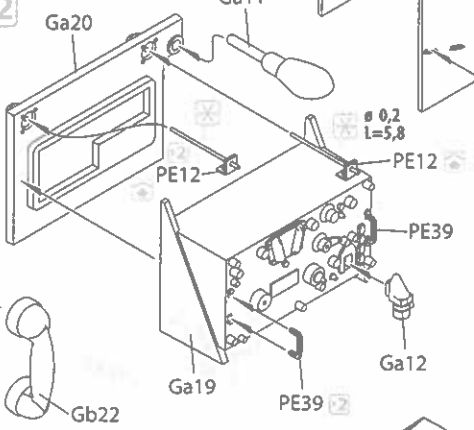
29



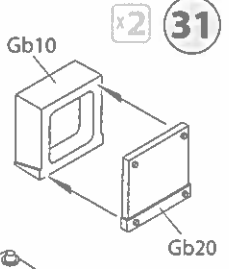
30



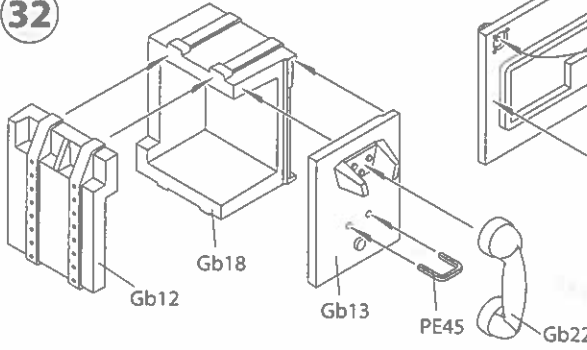
33 x2



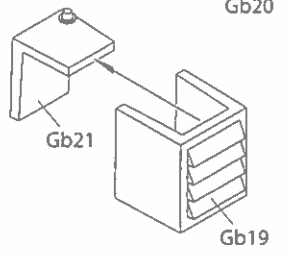
x2 31



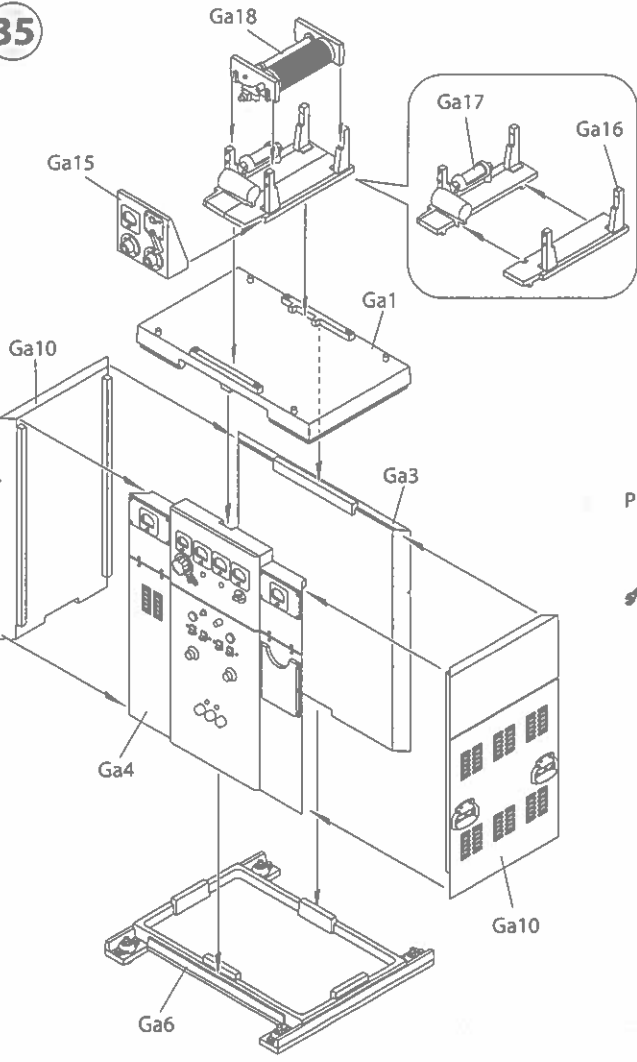
32



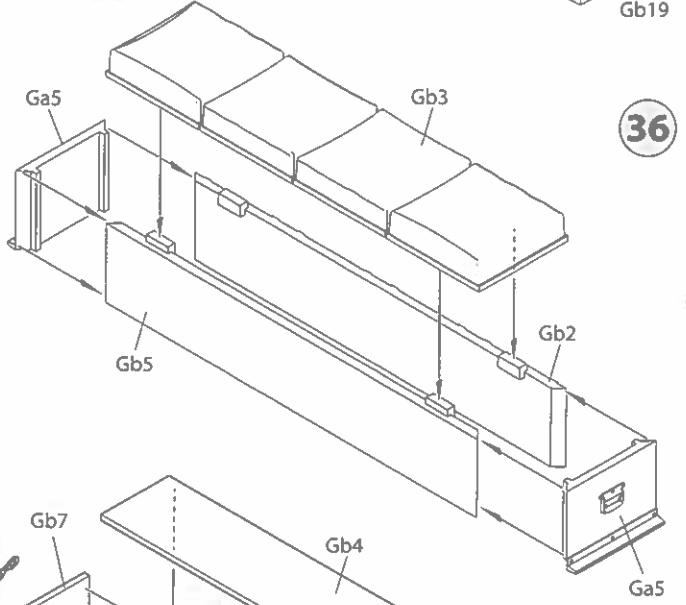
34



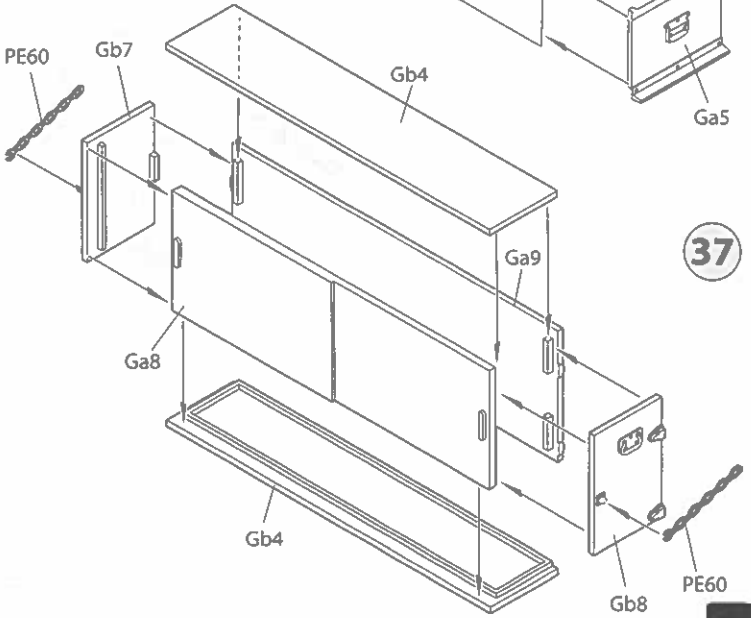
35



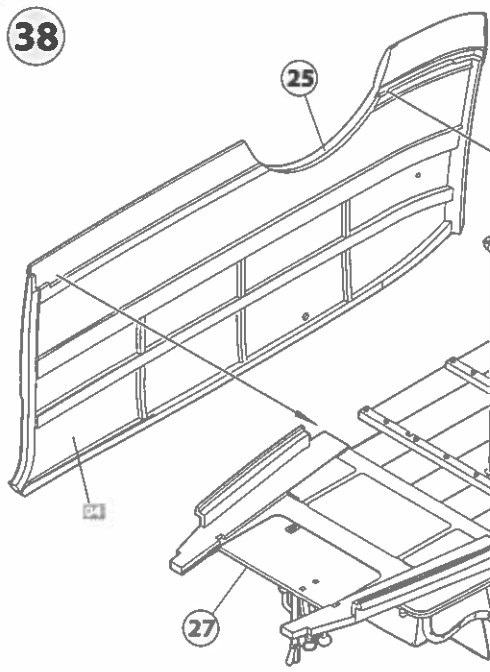
36



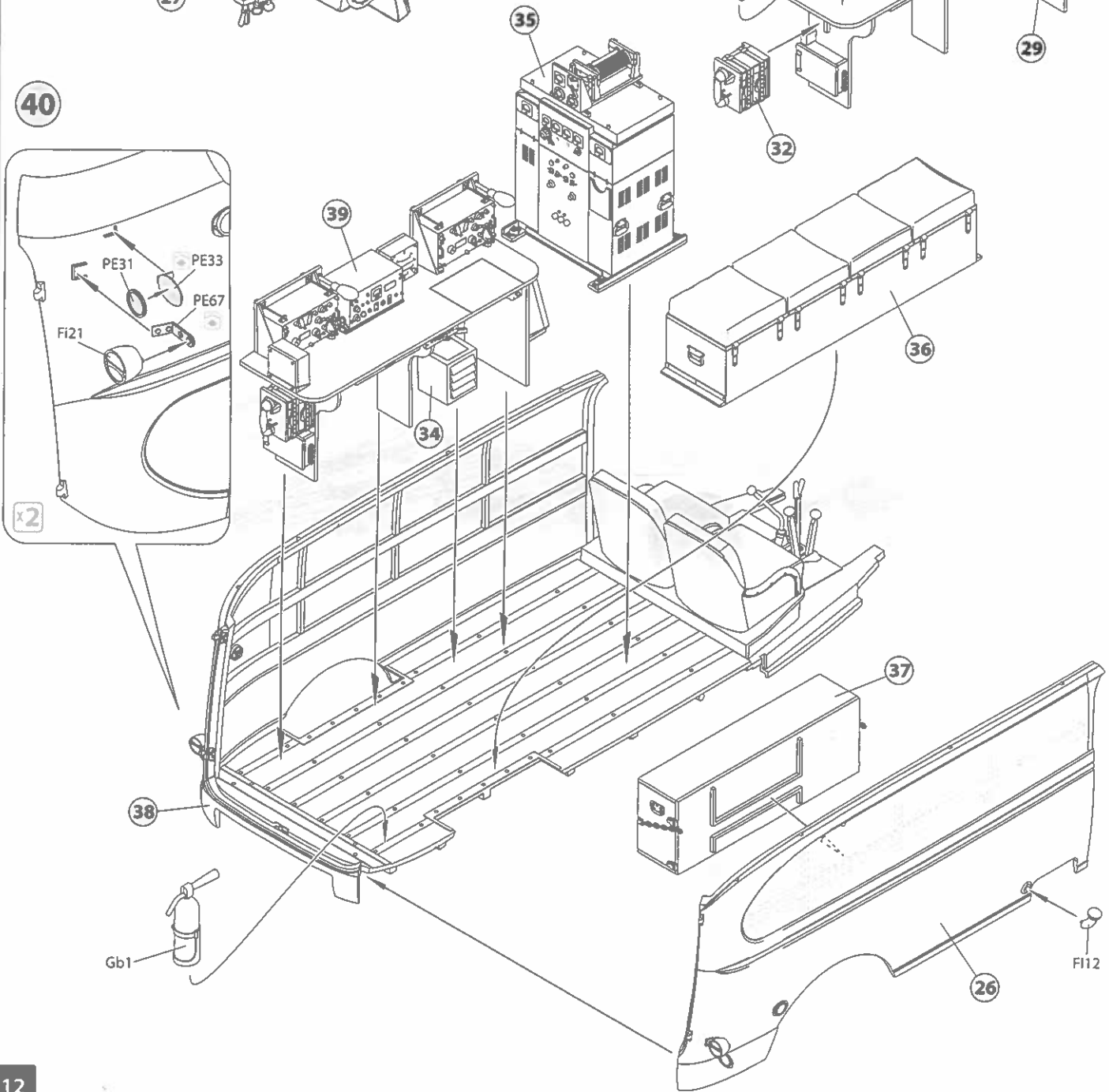
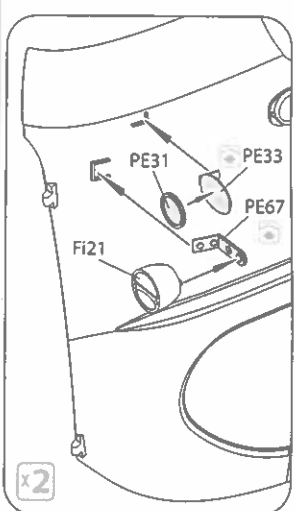
37



38



40



41

Em



Em11

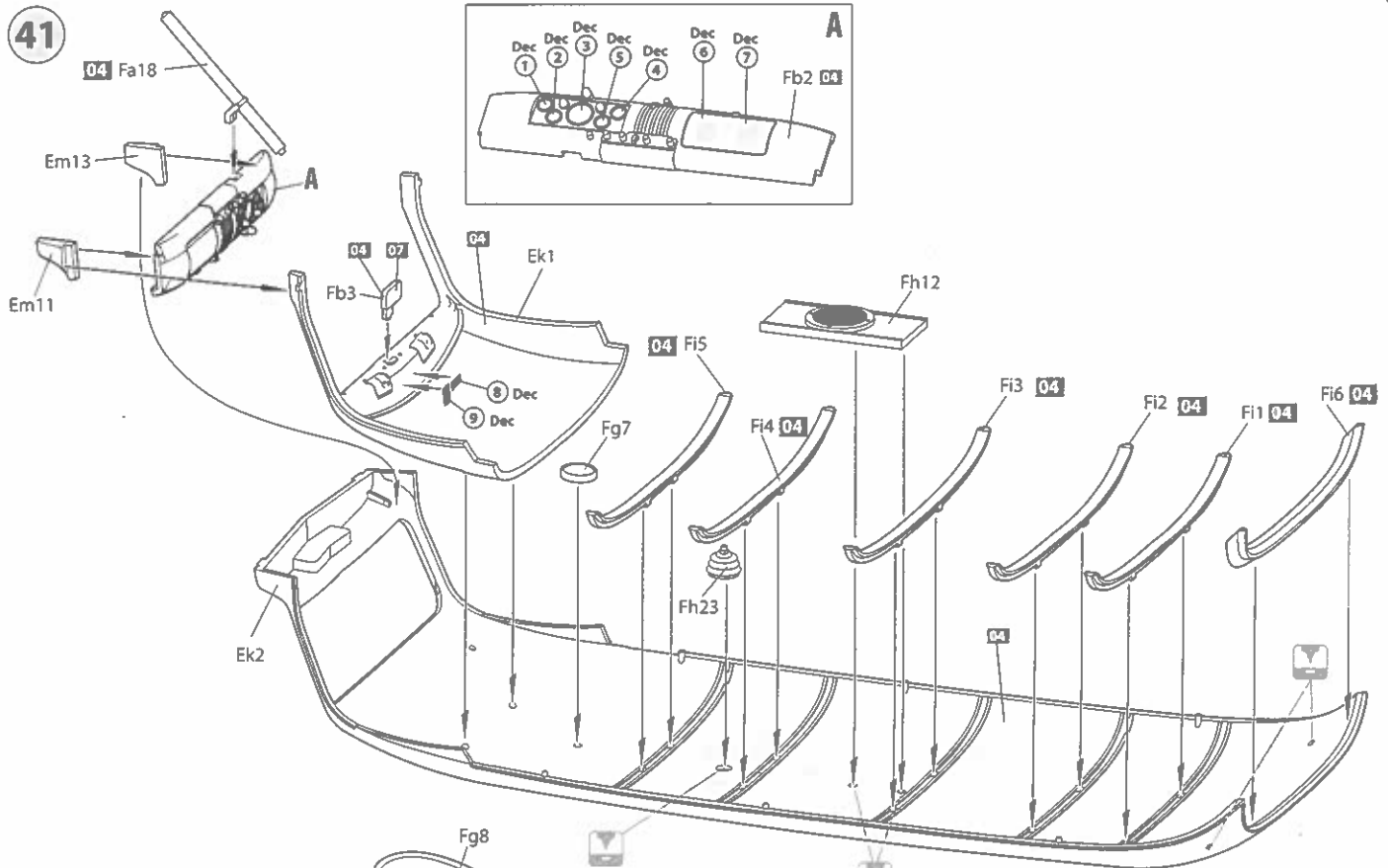
42

44

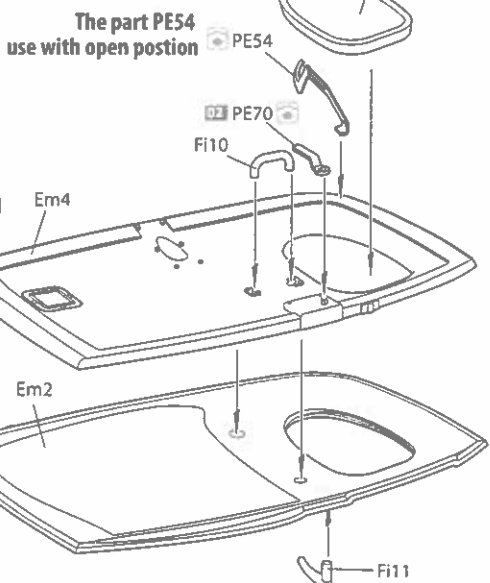


Fa14
Fa13

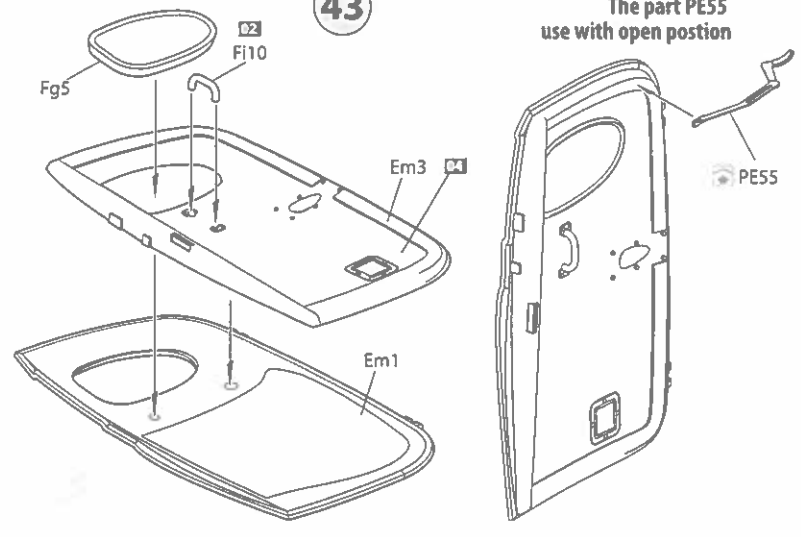
41



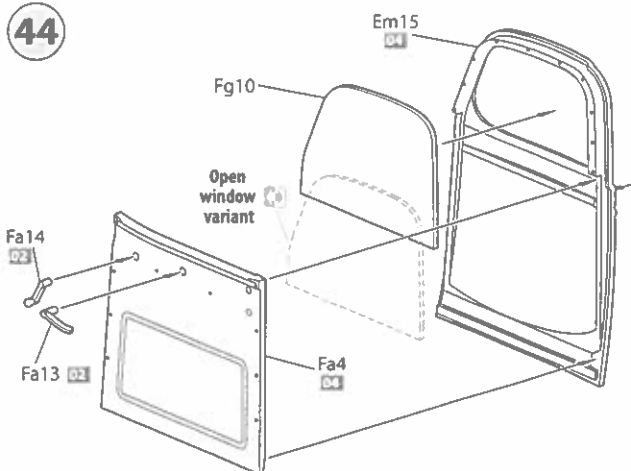
42



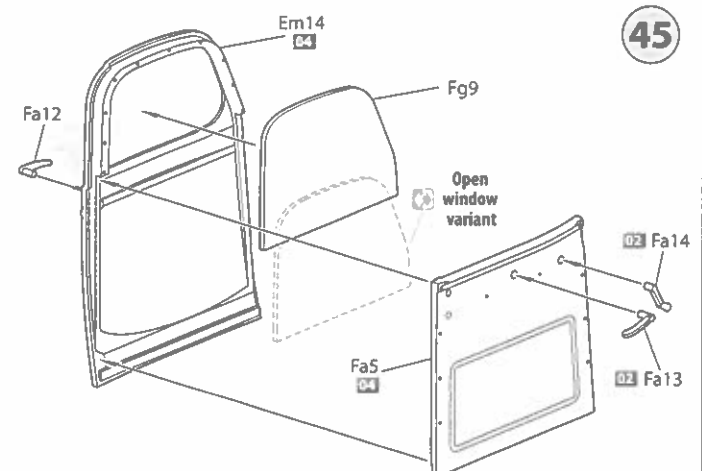
43



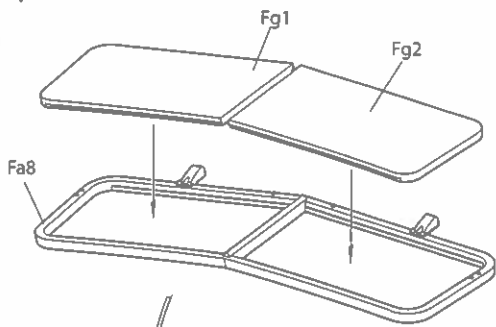
44



45

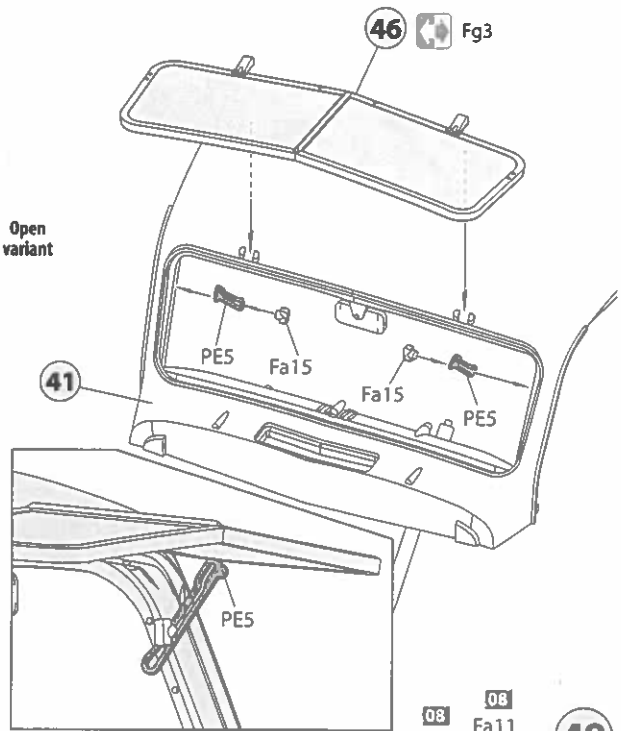
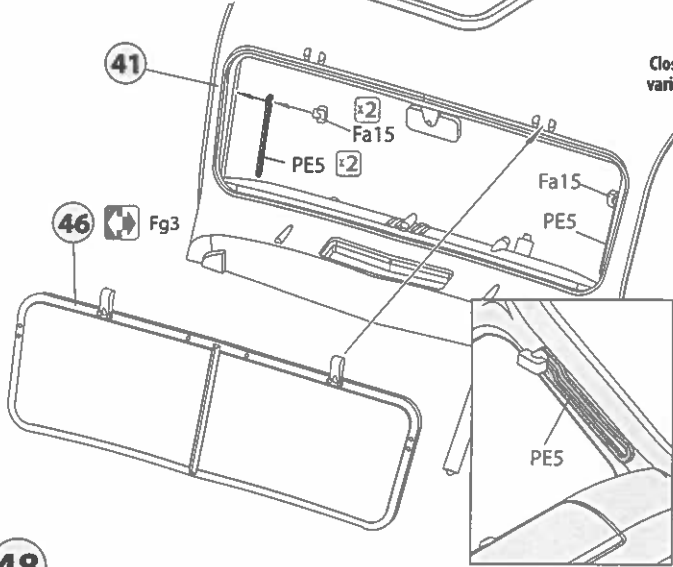


46

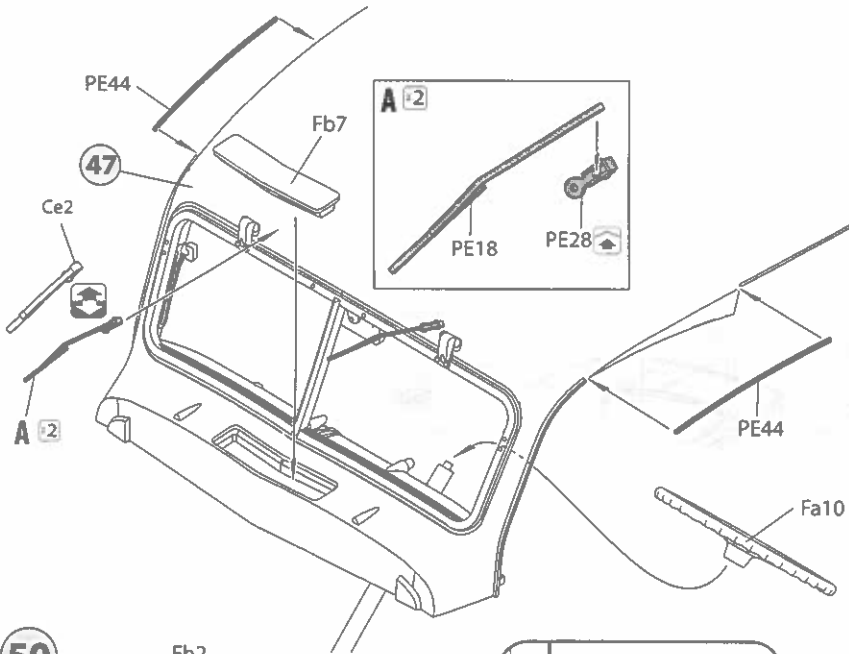


47

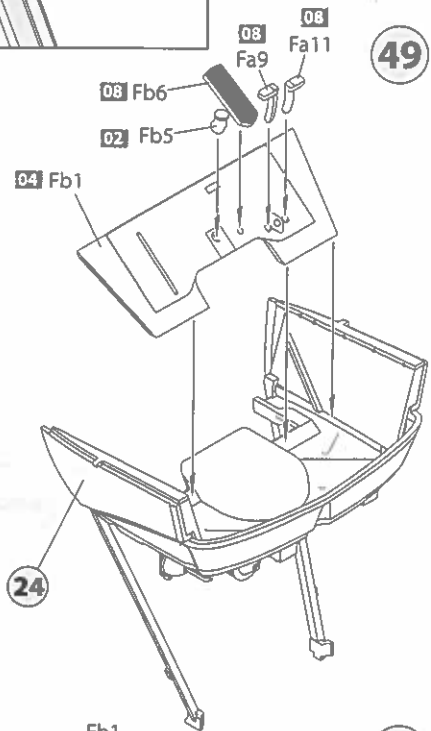
Closed variant  Open variant



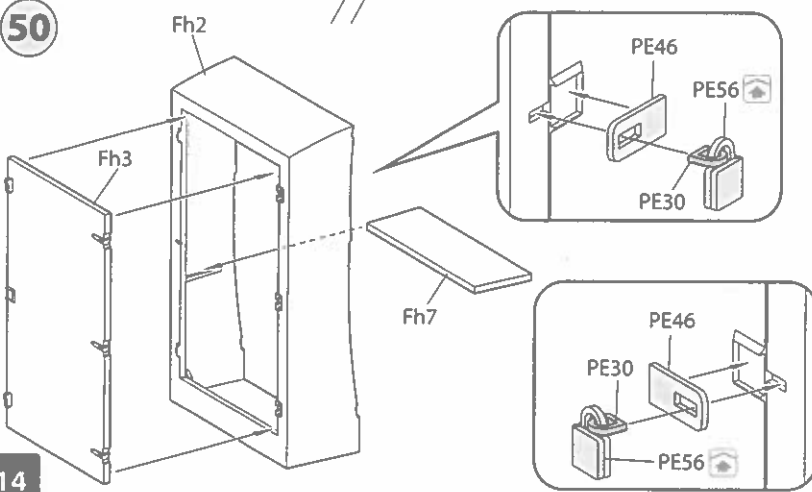
48



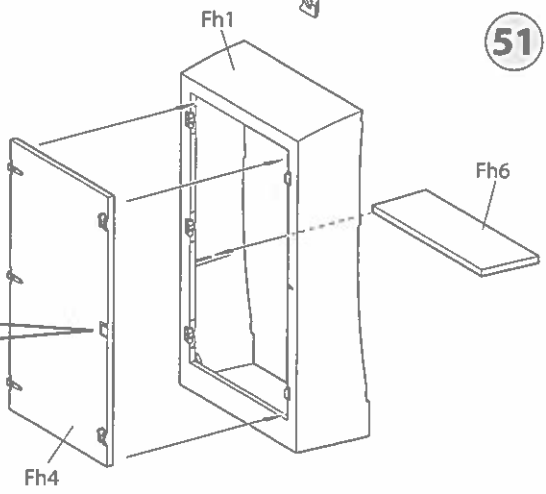
49



50



51

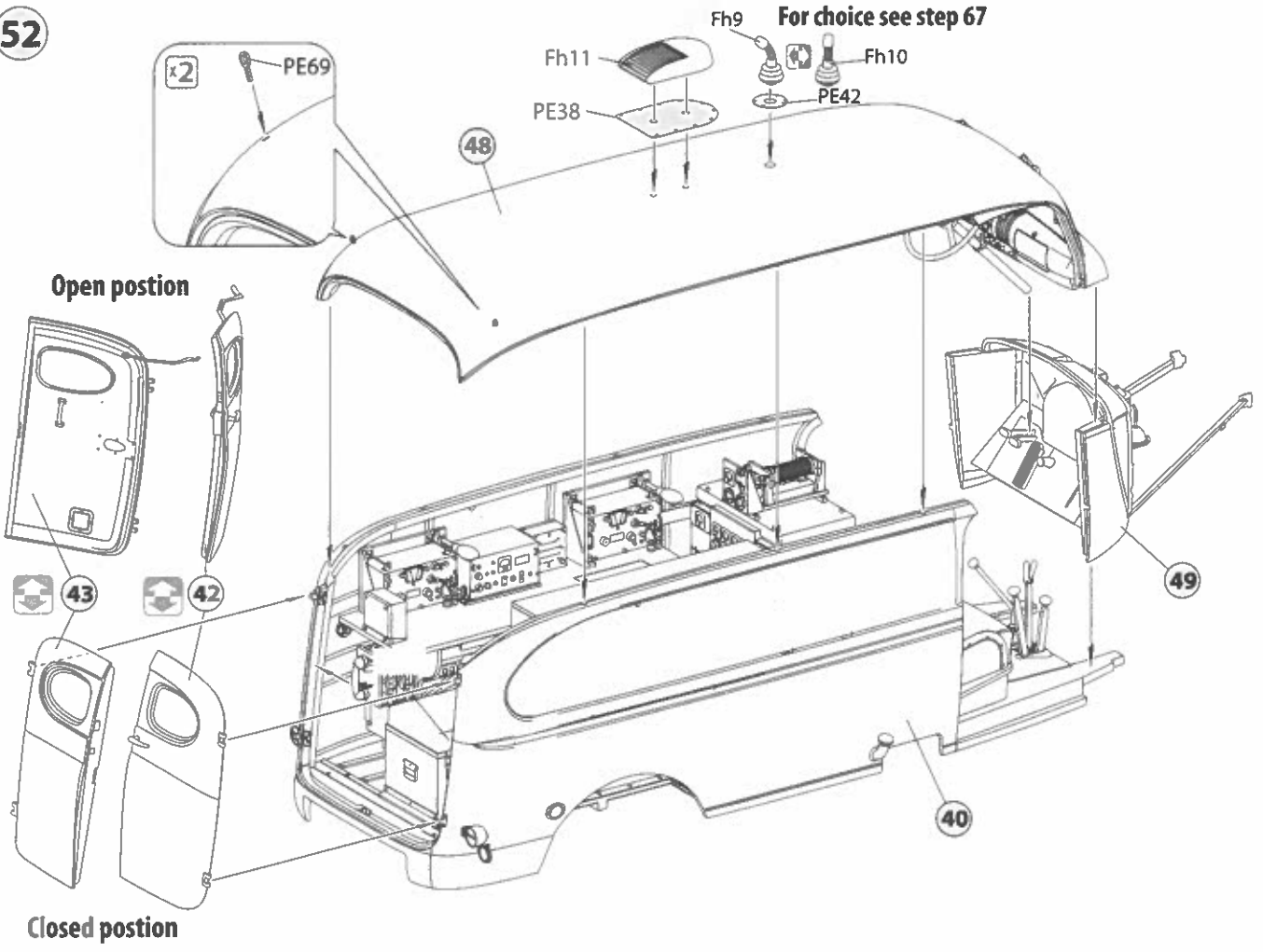


52

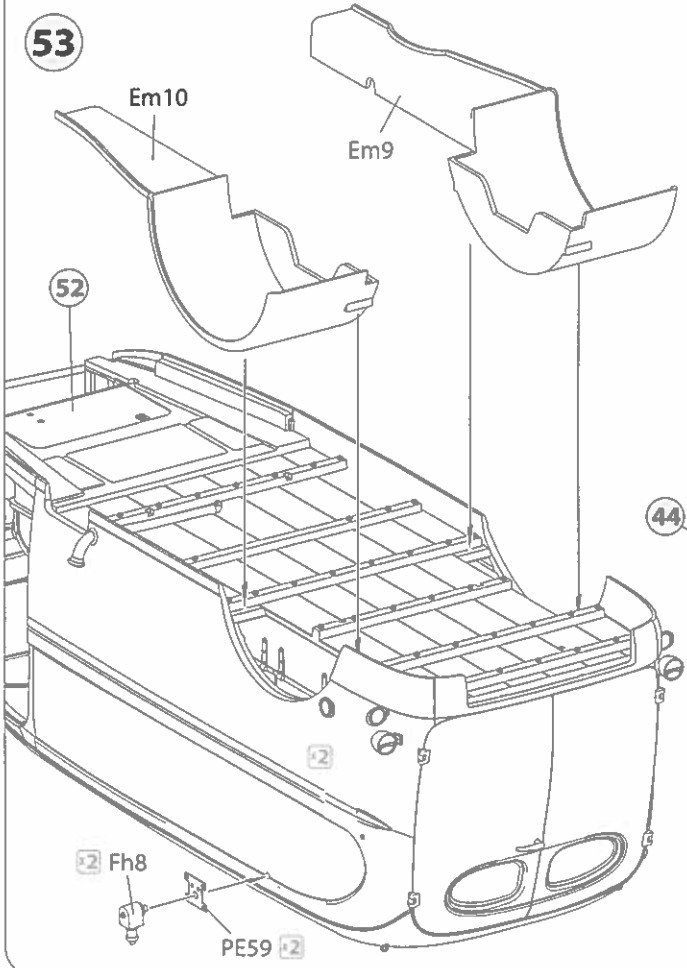
53

52

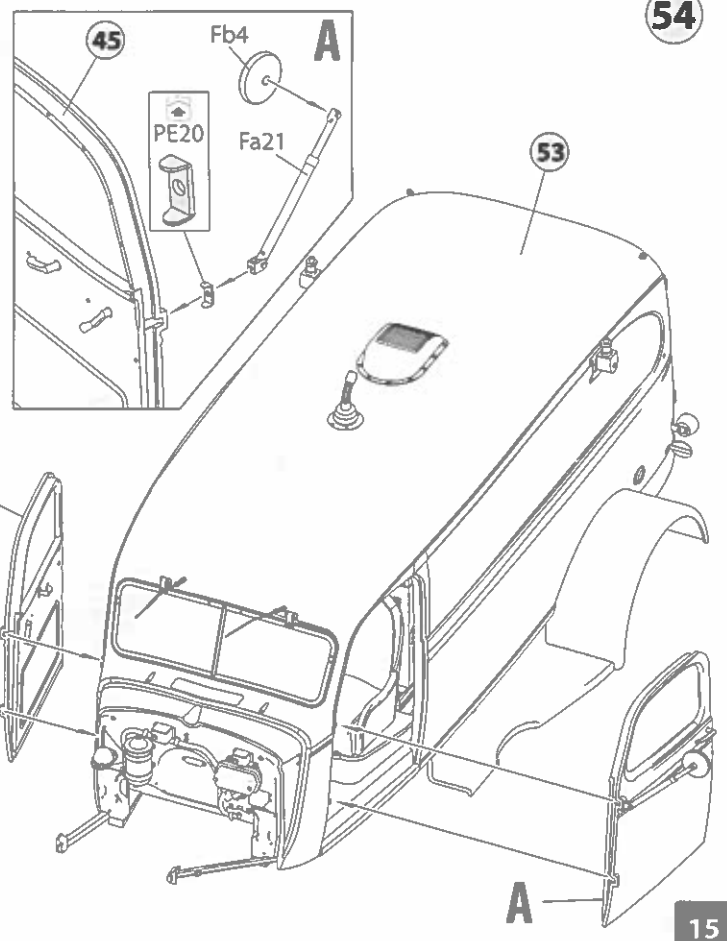
52



53



54



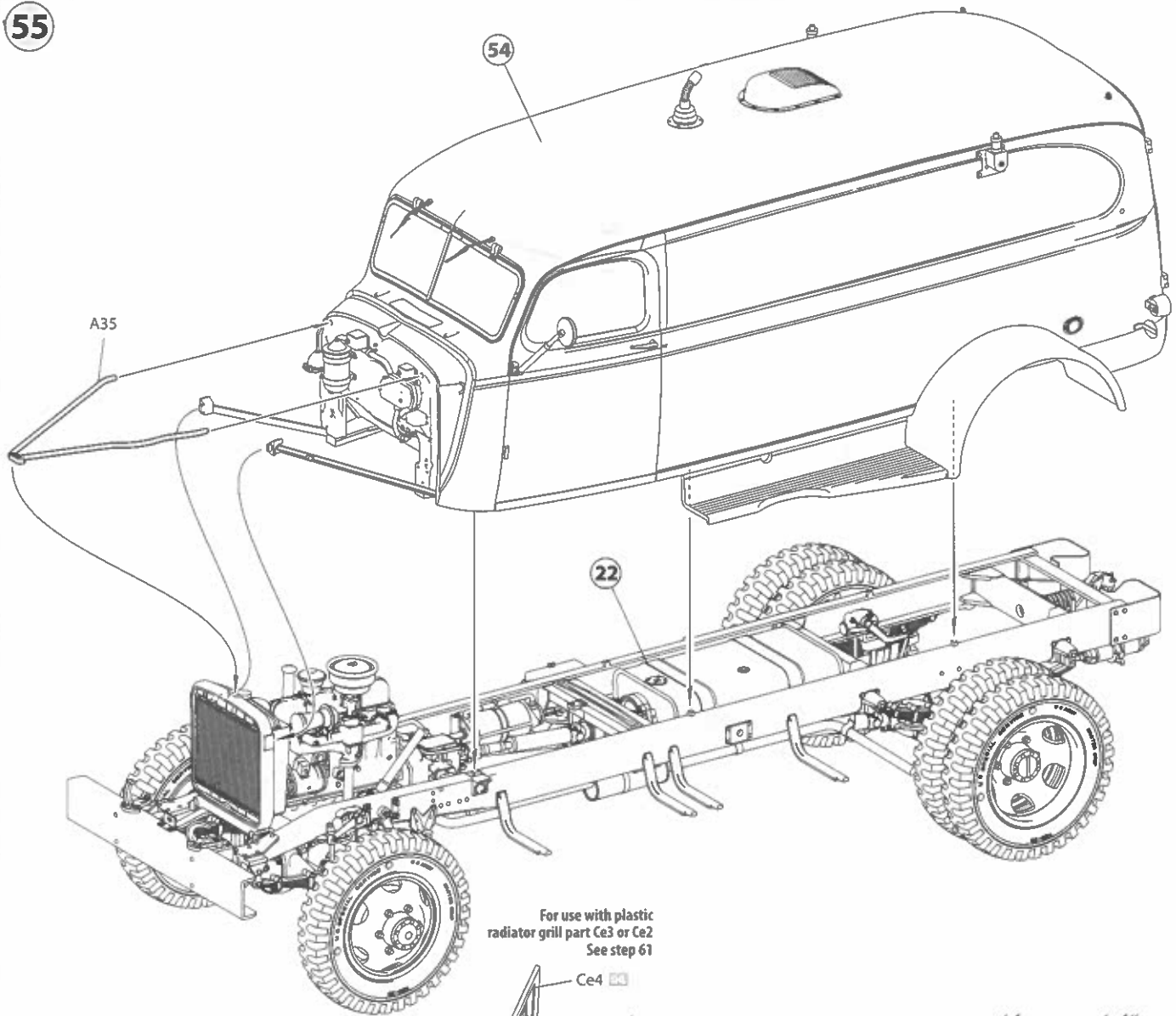
49

51

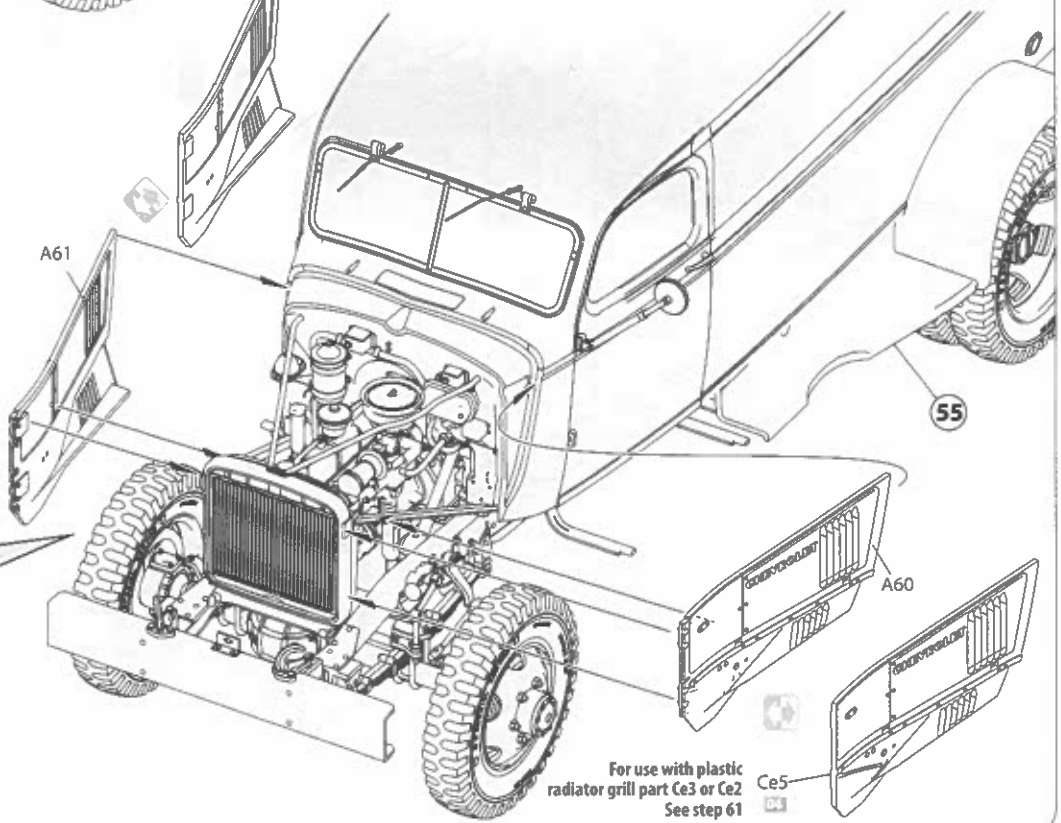
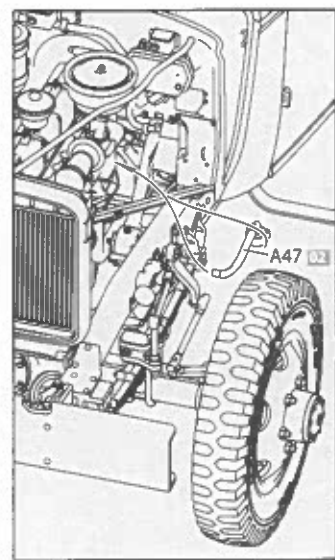
Fh6



55



56



16

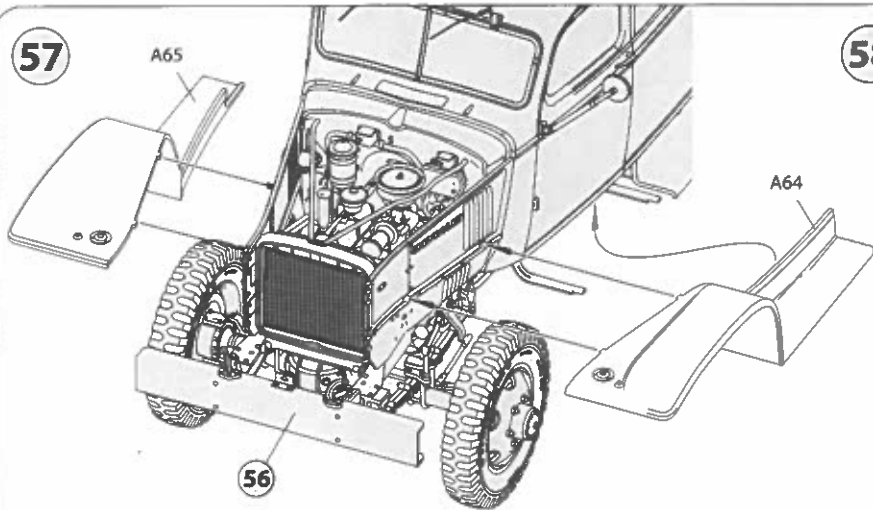
57

59

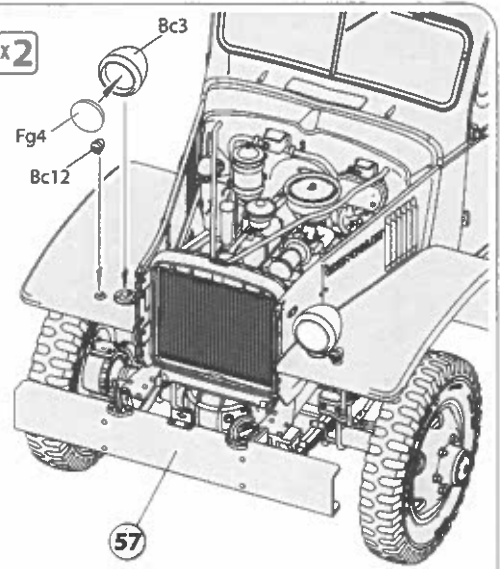
Auxilia

Fd: Auxil

57

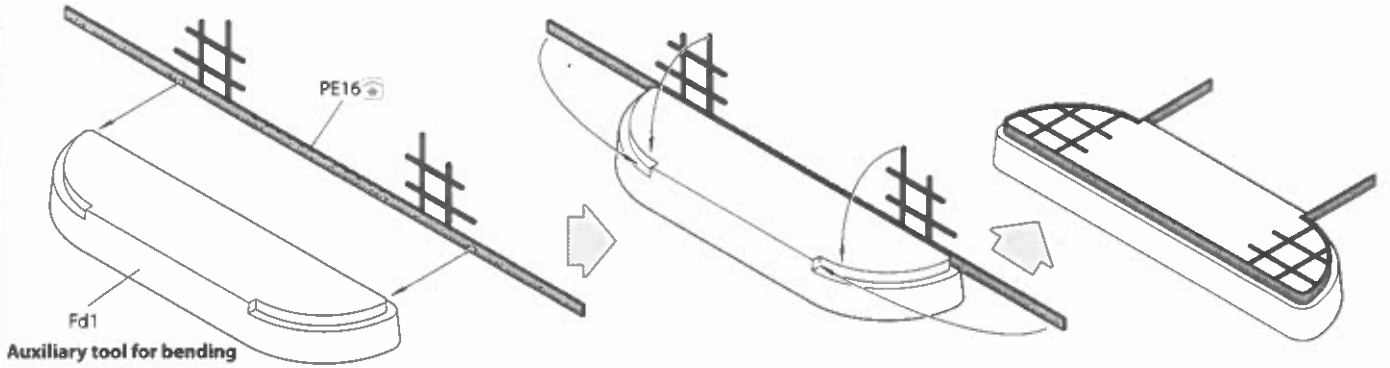


58 x2

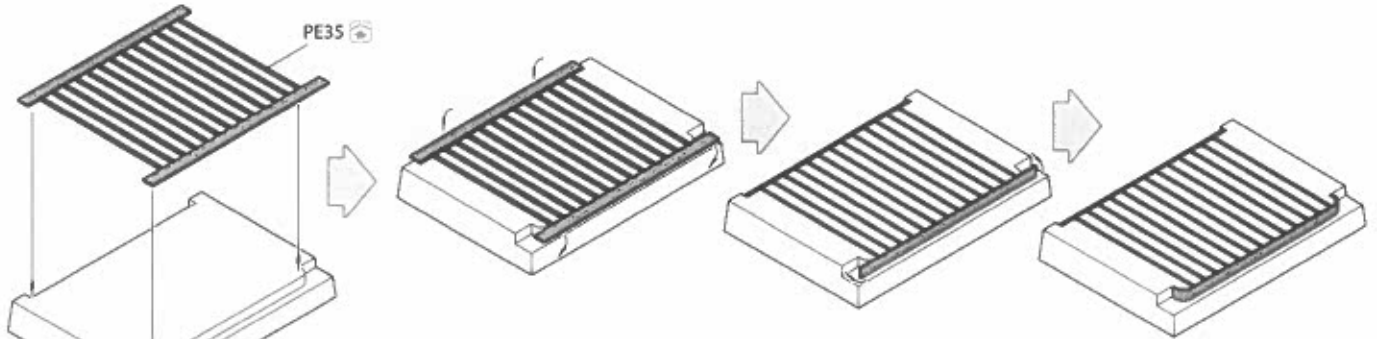


59

Use PE radiator grill. skip this step and use plastic part of radiator grill
See step 61

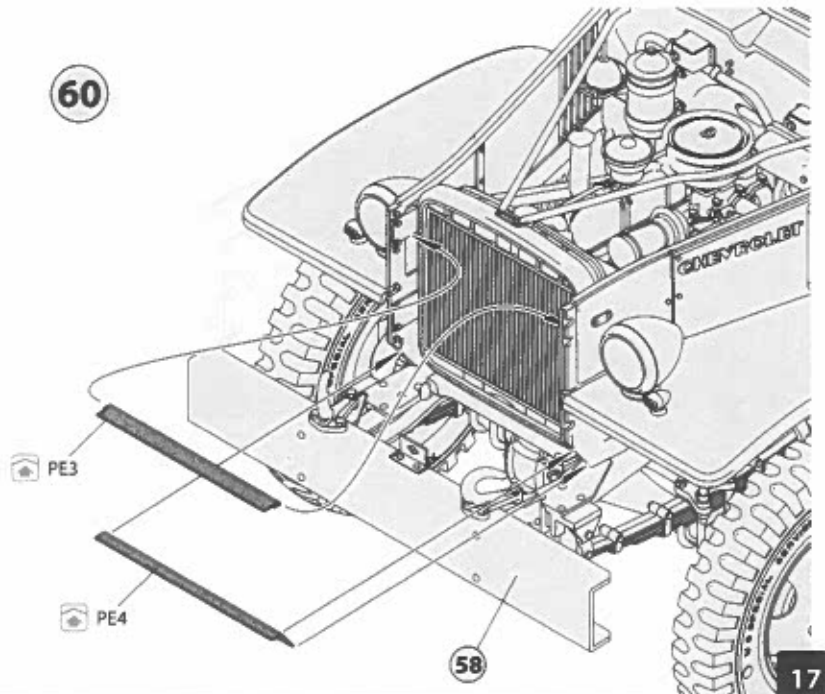
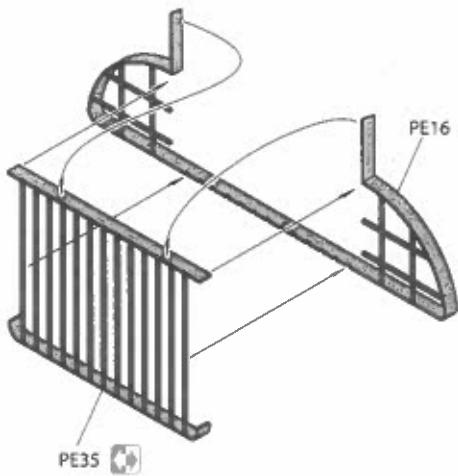


Auxiliary tool for bending

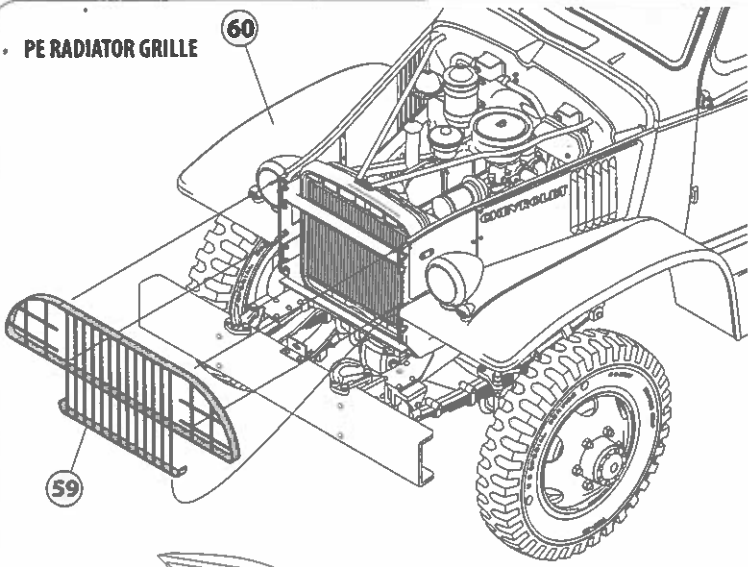


Auxiliary tool for bending

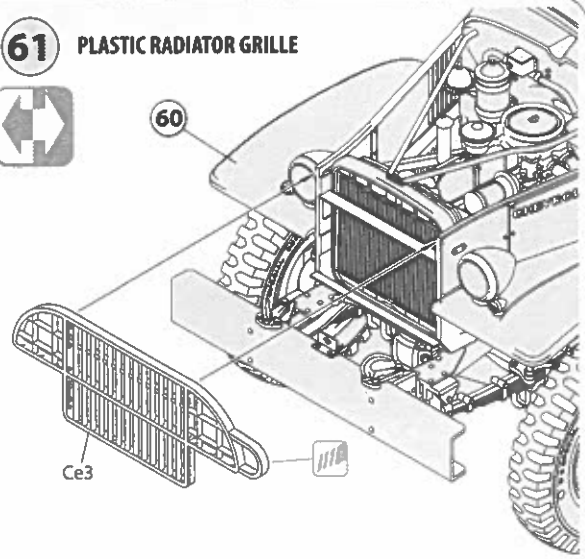
60



PE RADIATOR GRILLE



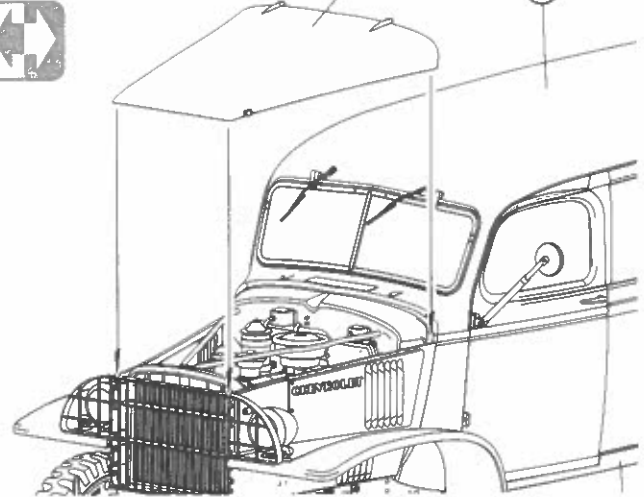
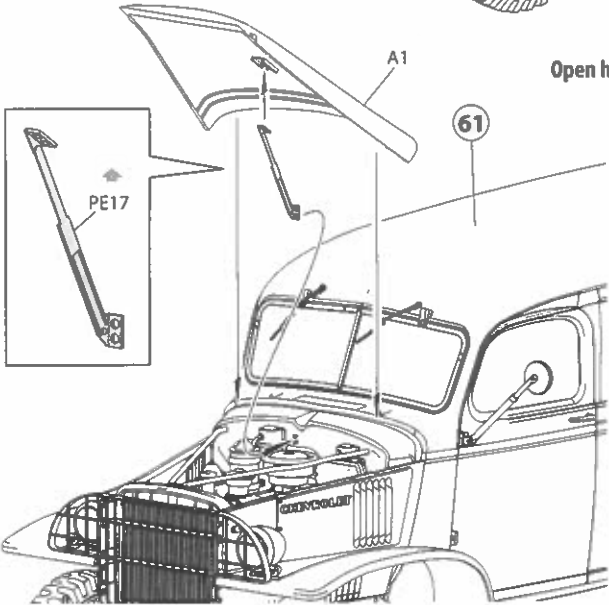
61 PLASTIC RADIATOR GRILLE



Open hood

62

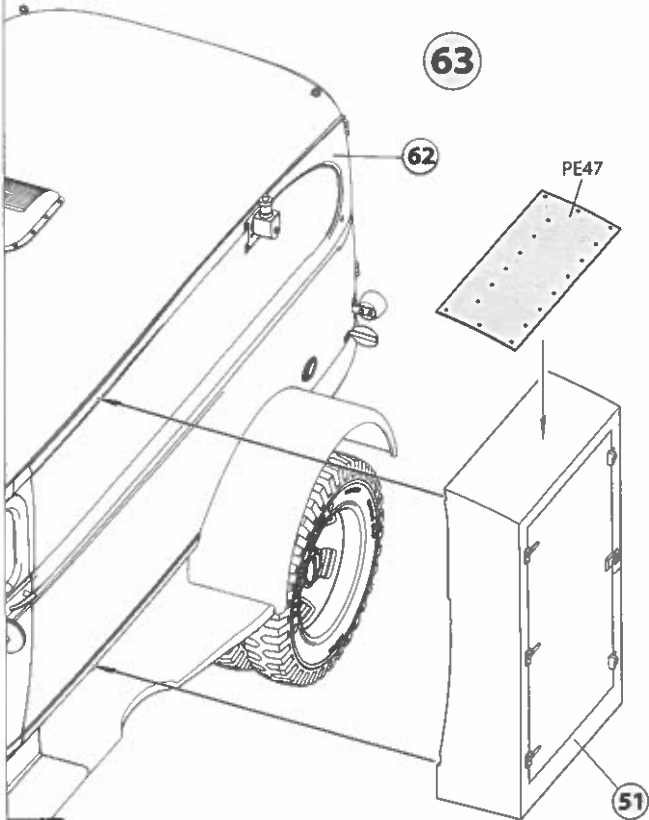
Closed hood



63

62

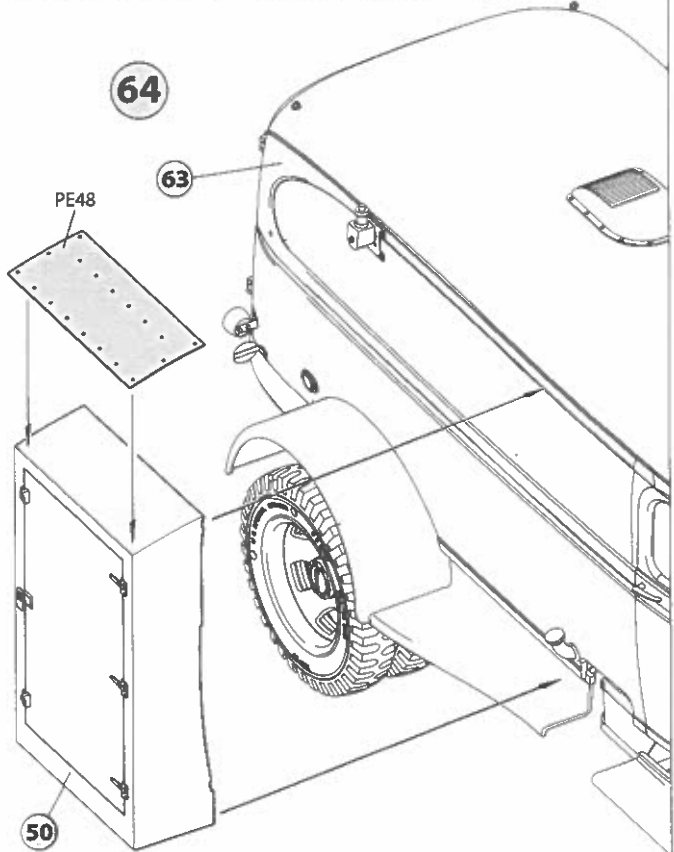
PE47



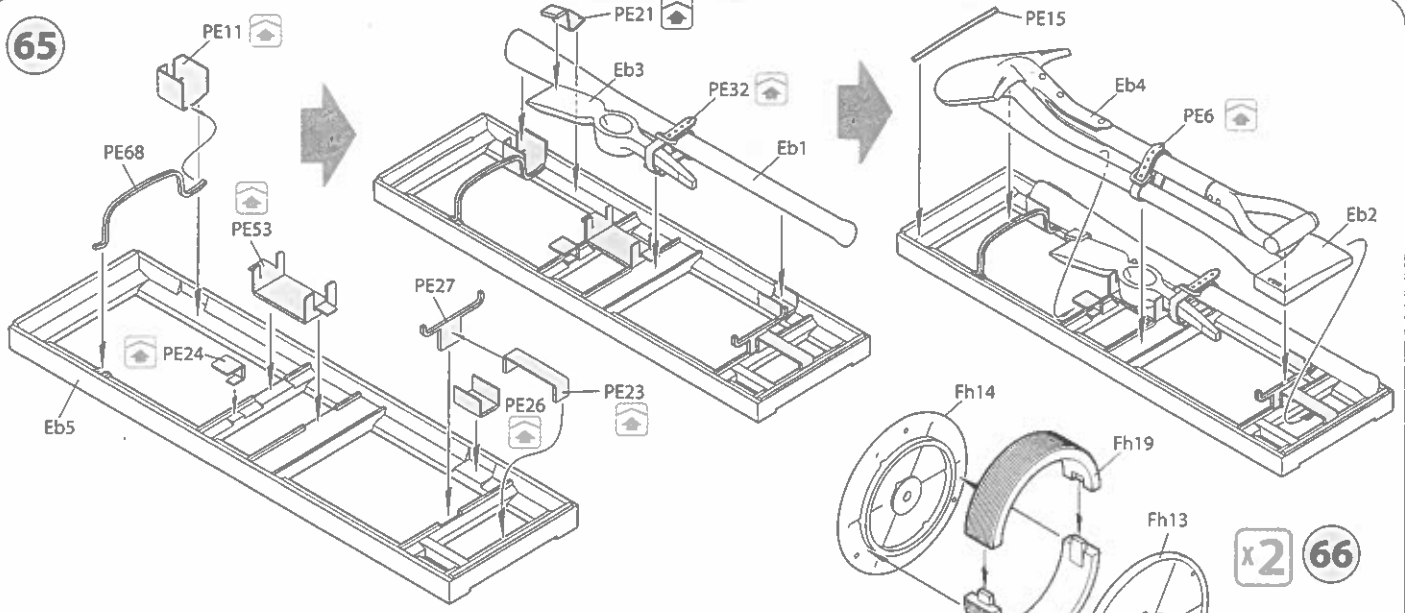
64

63

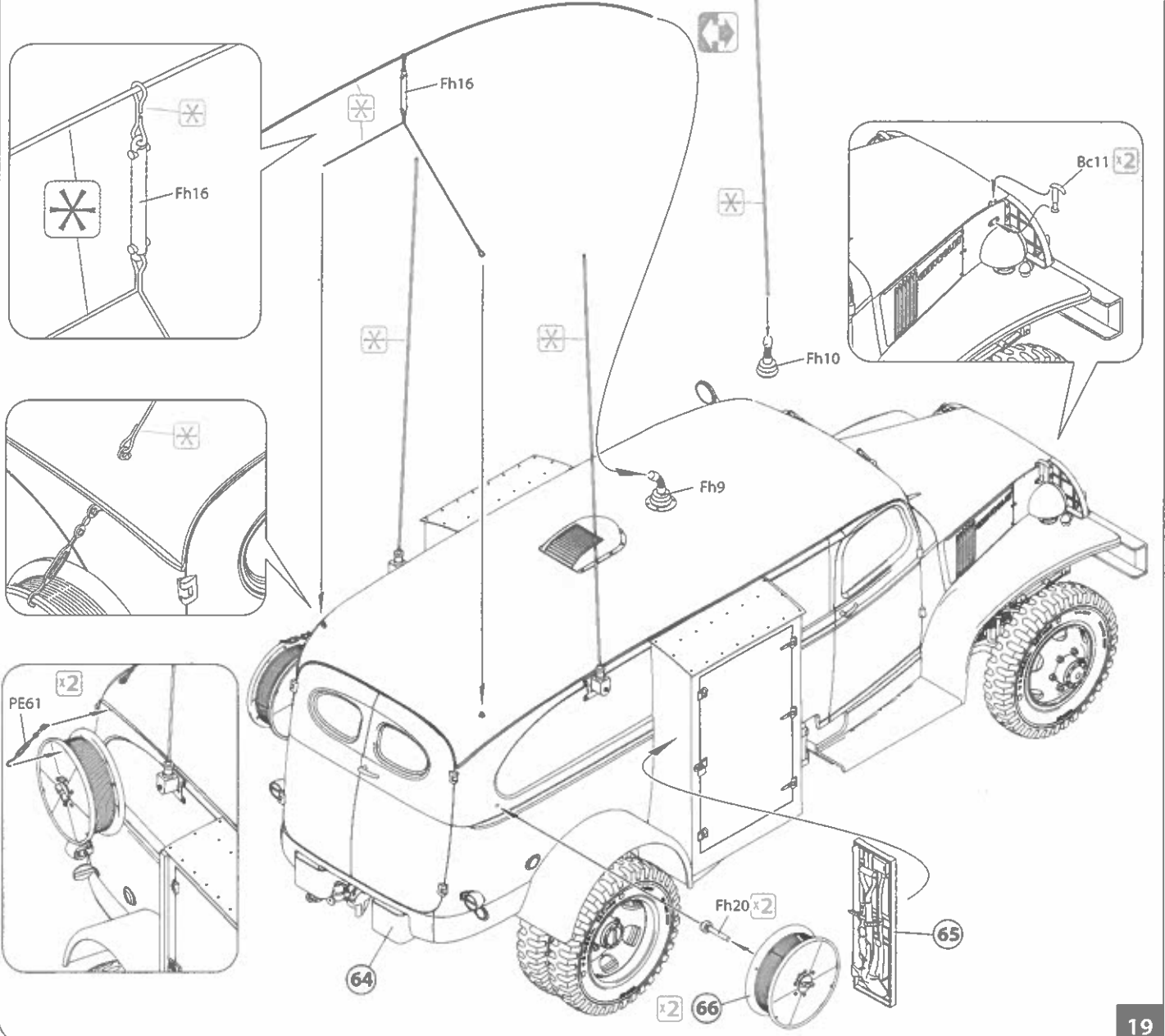
PE48

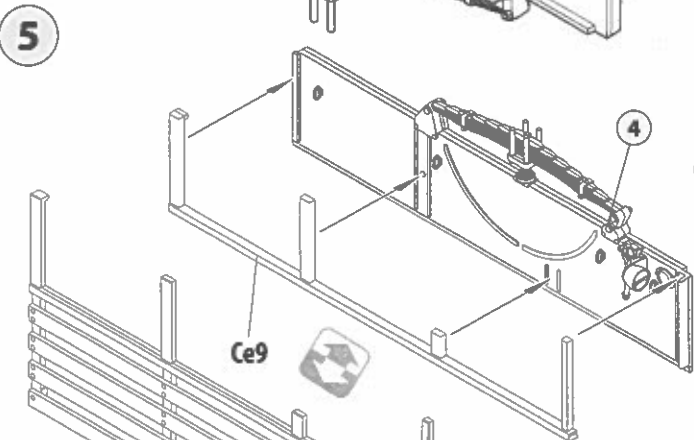
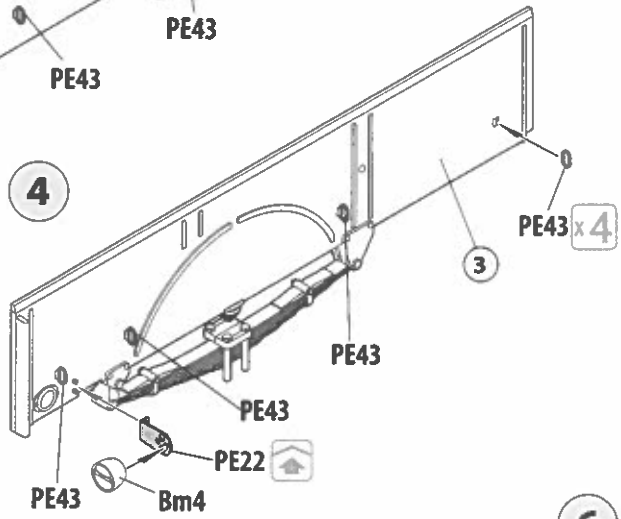
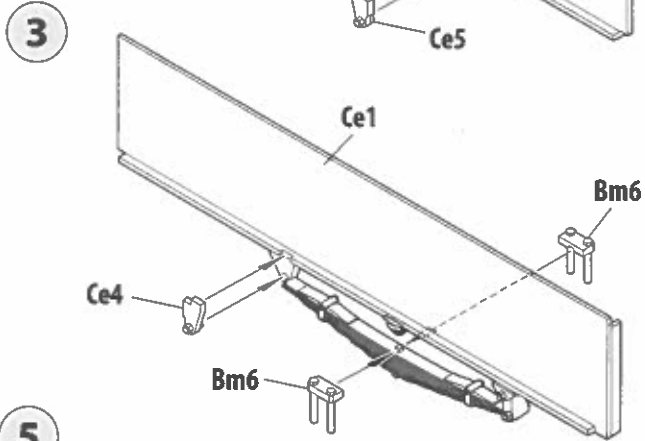
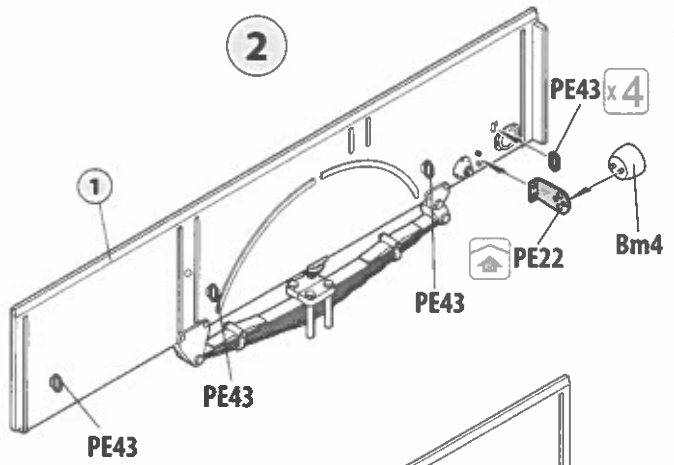
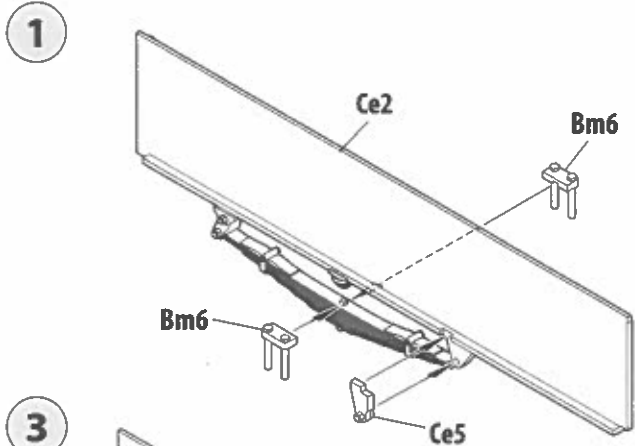


65

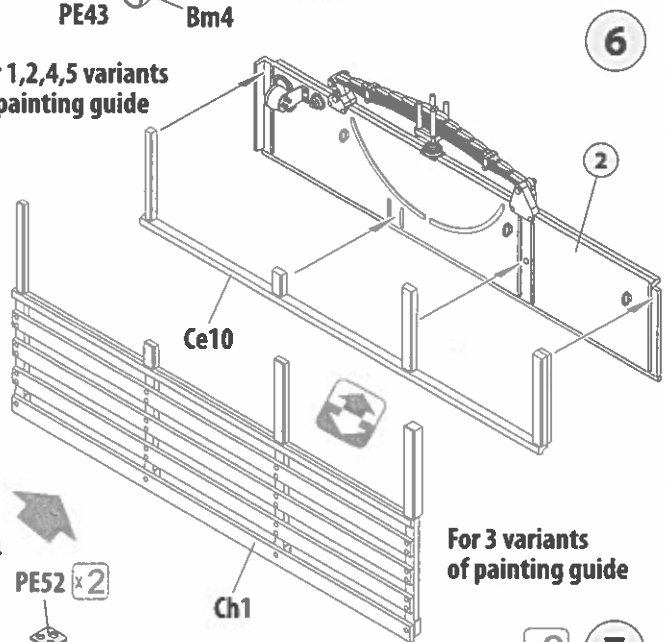


67





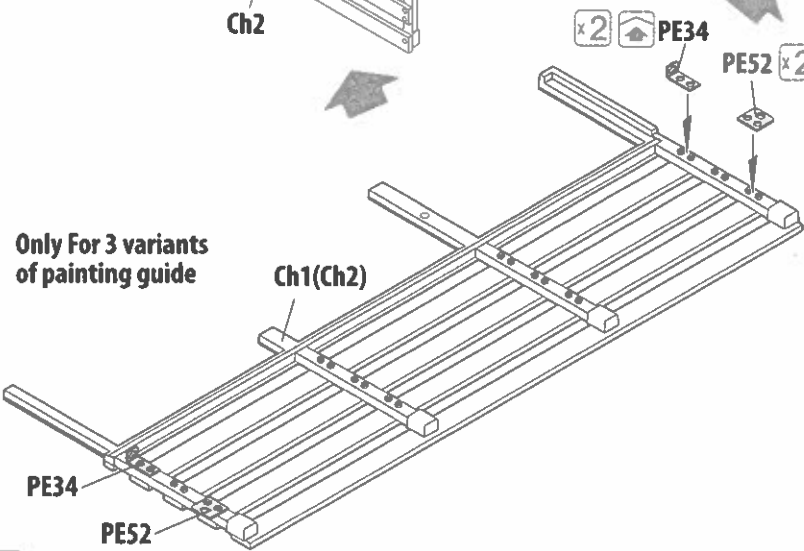
For 1,2,4,5 variants of painting guide



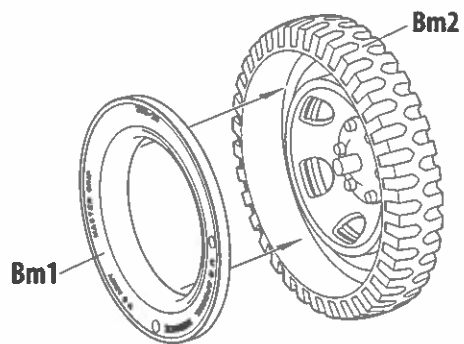
For 3 variant of painting guide

For 1,2,4,5 variants of painting guide

For 3 variants of painting guide



Only For 3 variants of painting guide



8



5

x2



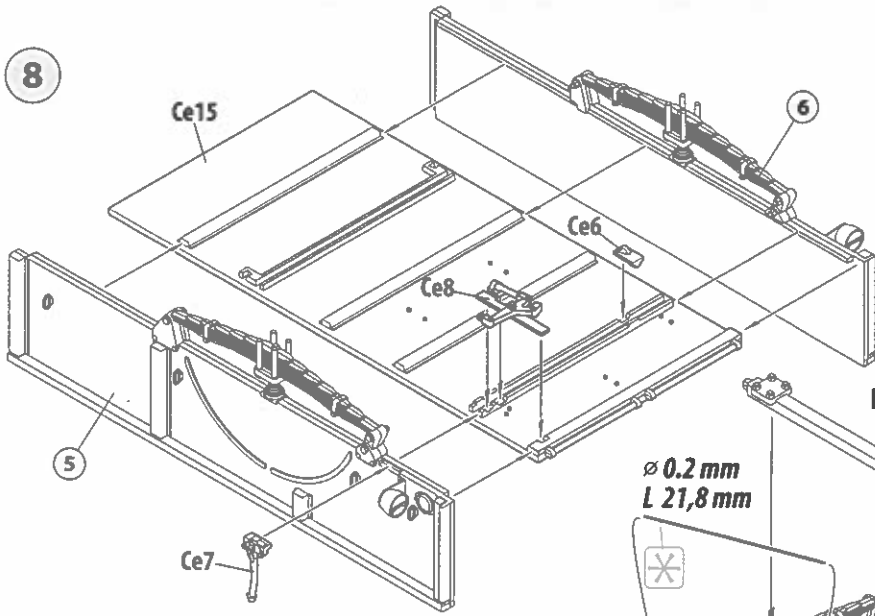
10

Bm

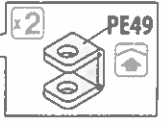
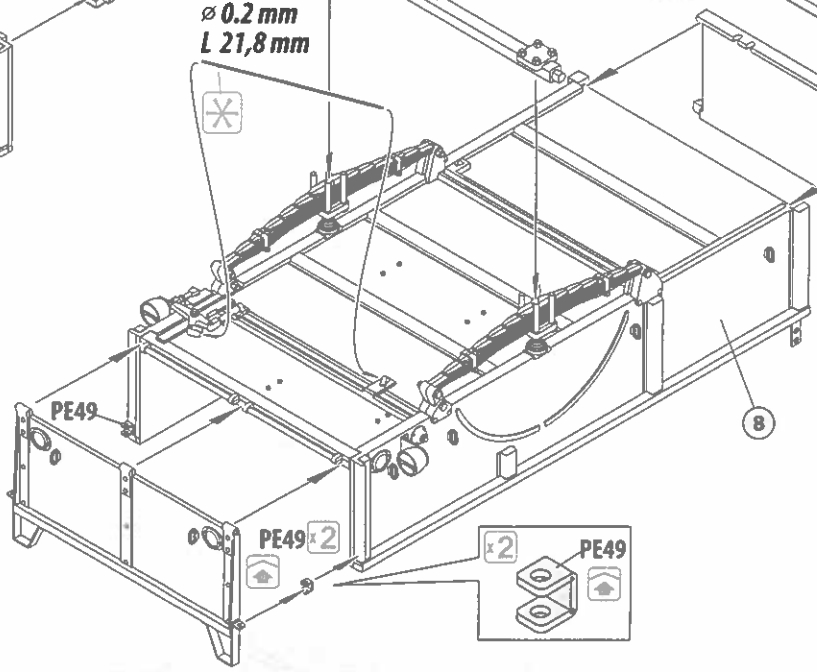
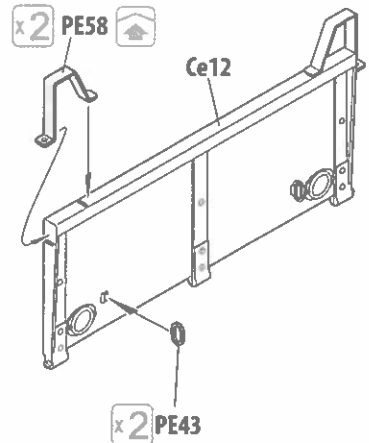
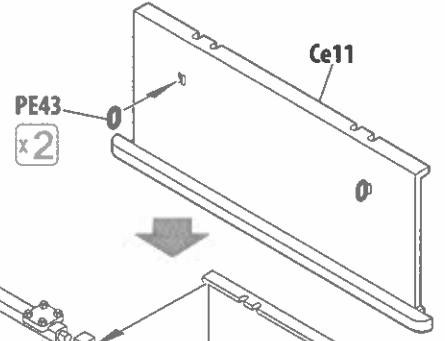


∅ 0.5 L 20,4

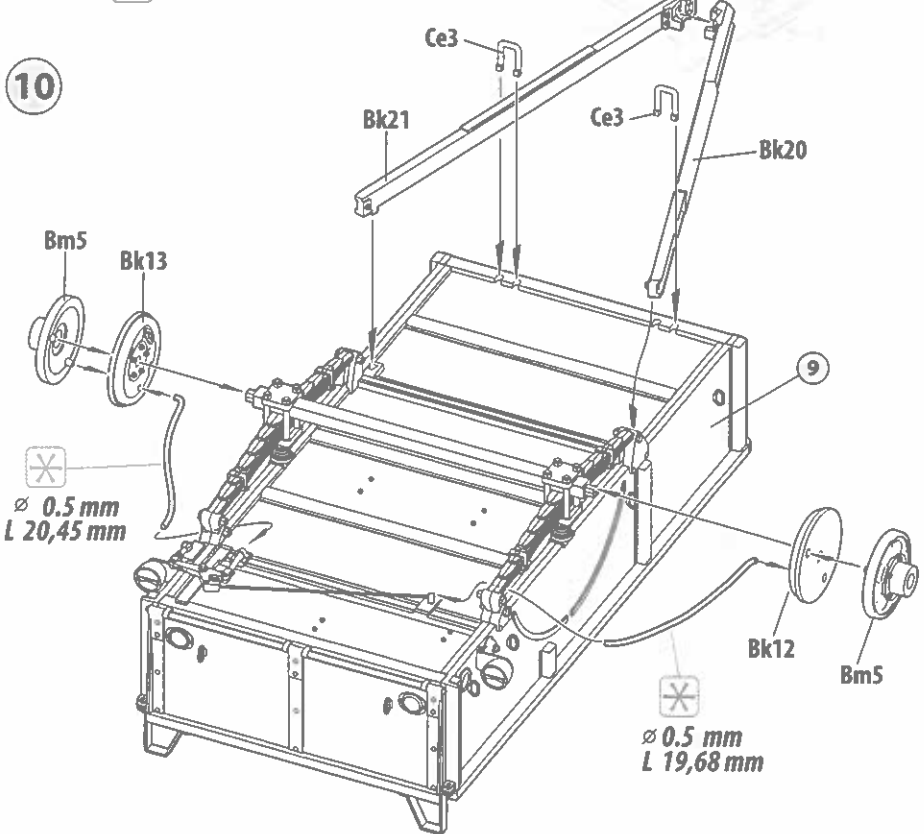
8



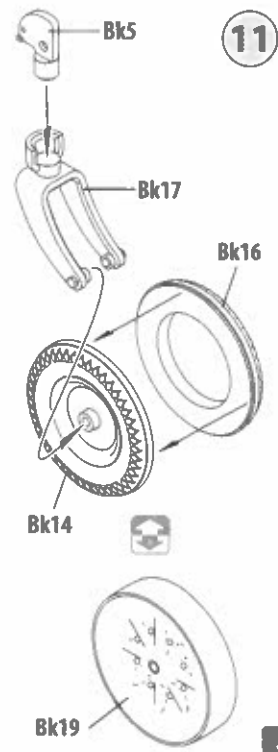
9



10



11



4x4

Bm4

3x4

6

2

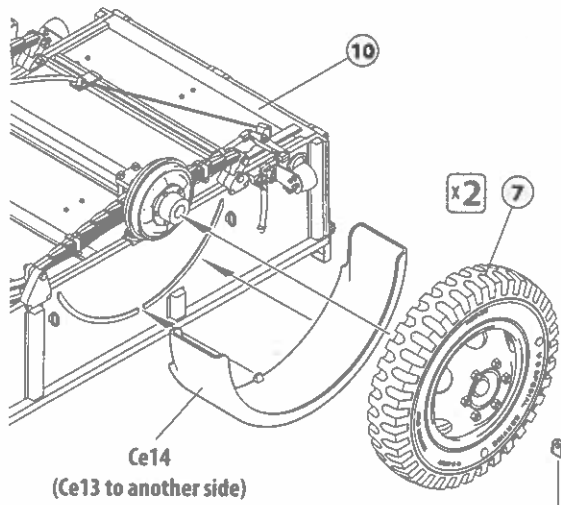
side

7

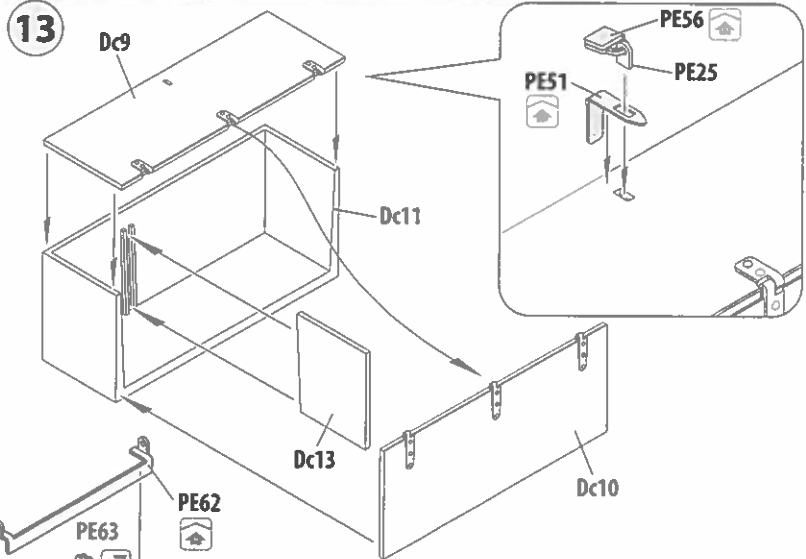
12

TRAILER ASSEMBLING

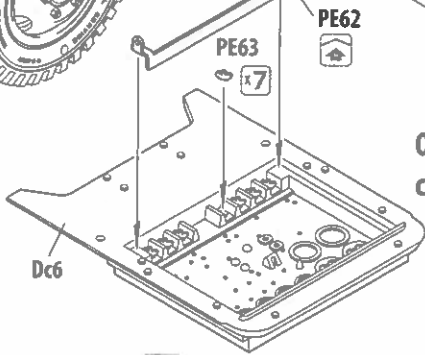
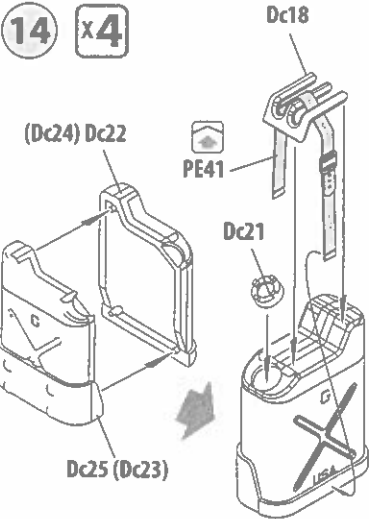
12



13

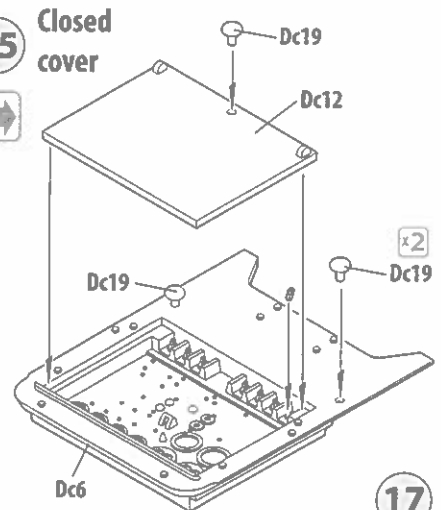
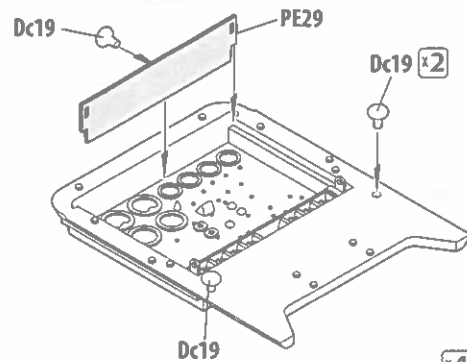


14 x4



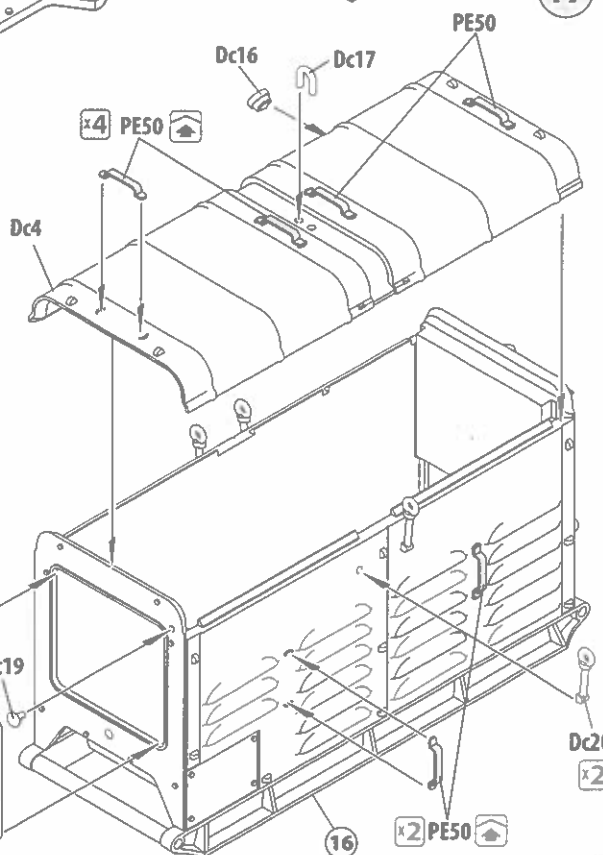
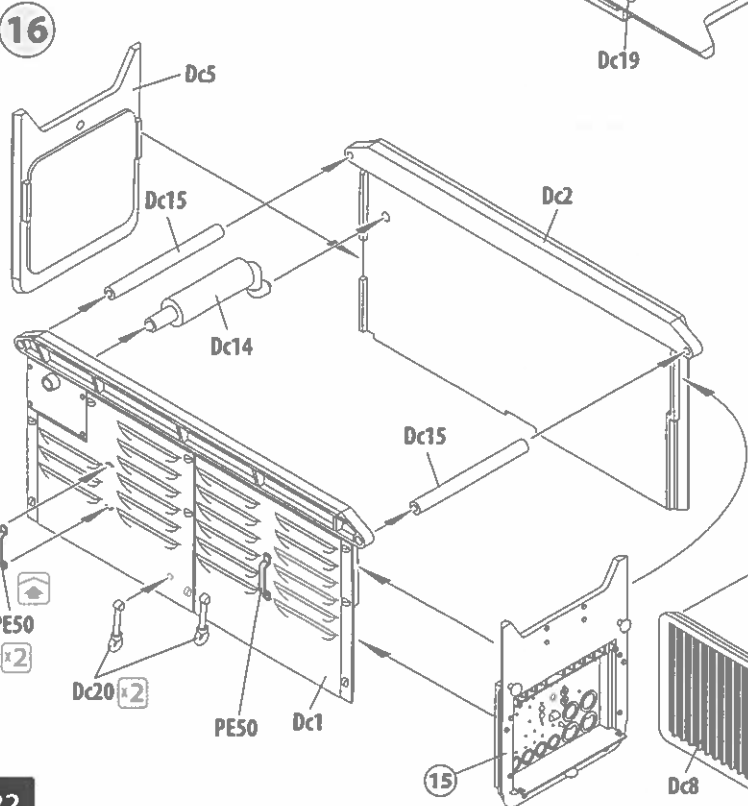
Open cover

Closed cover



17

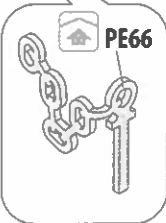
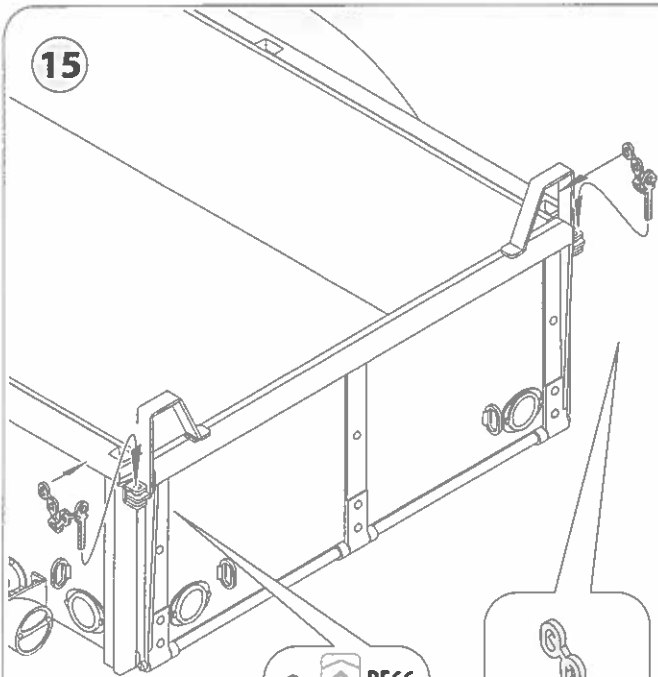
16



15

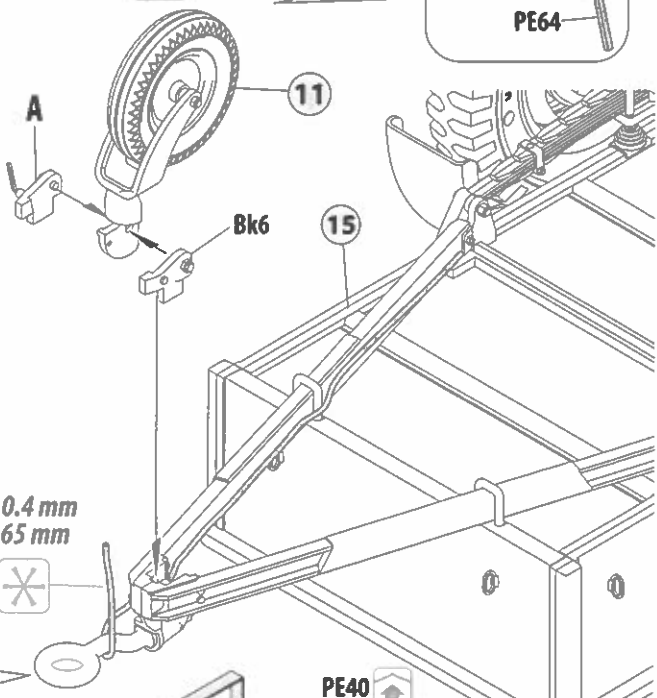
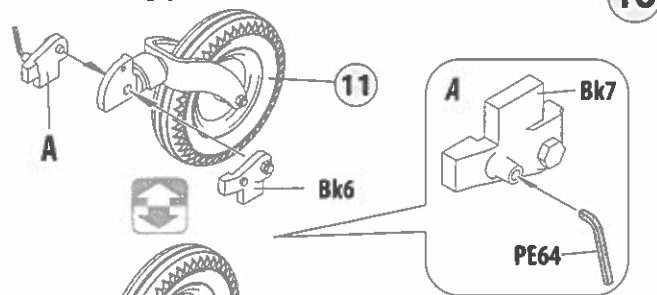
Bk1

15



Parking position

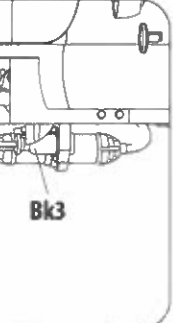
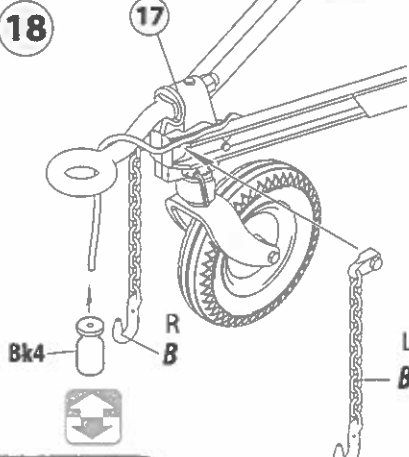
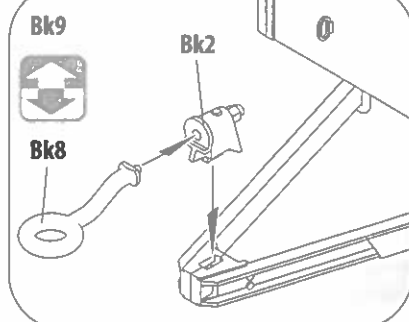
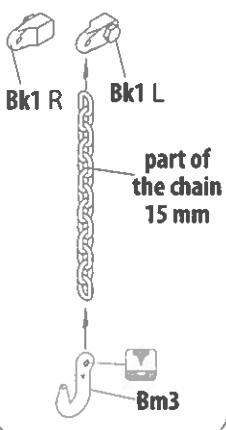
16



x2

Dc19

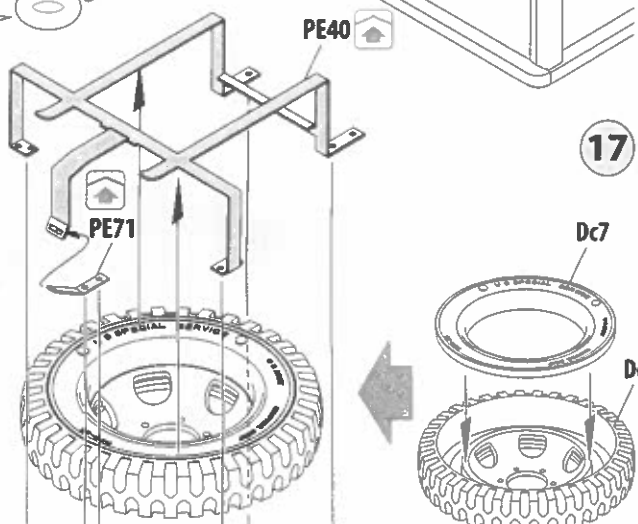
B x2



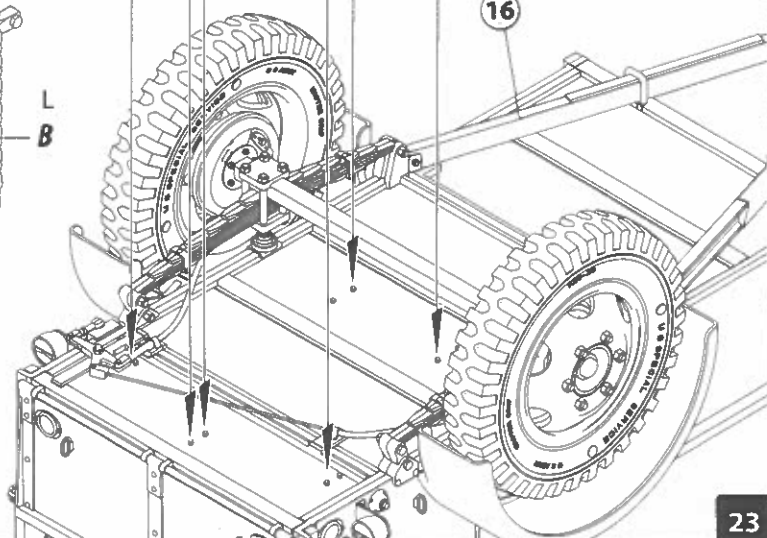
17

Dc7

Dc3

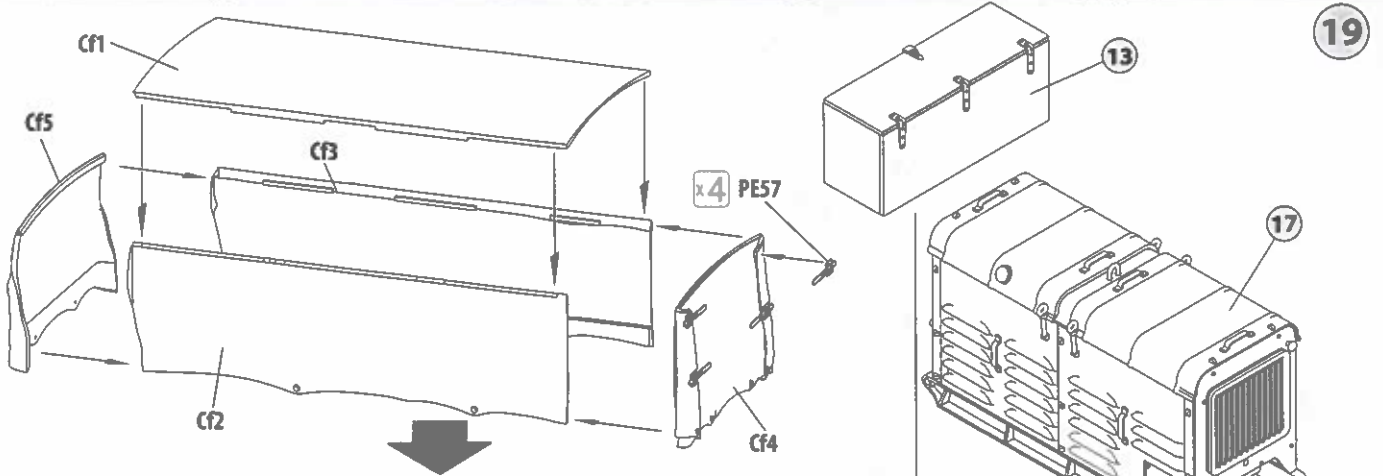


16

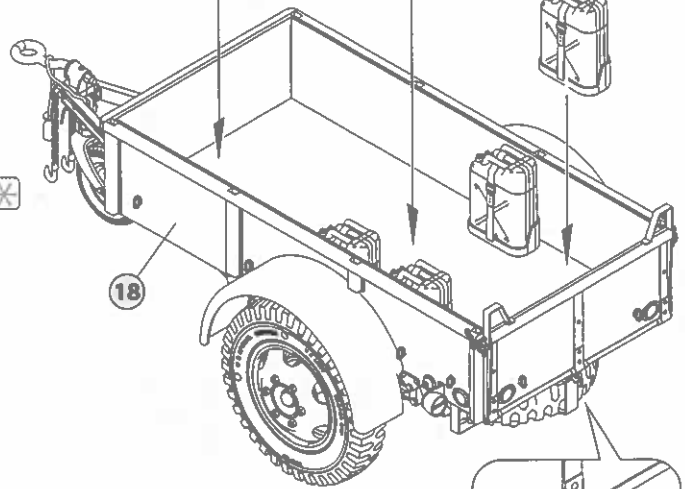
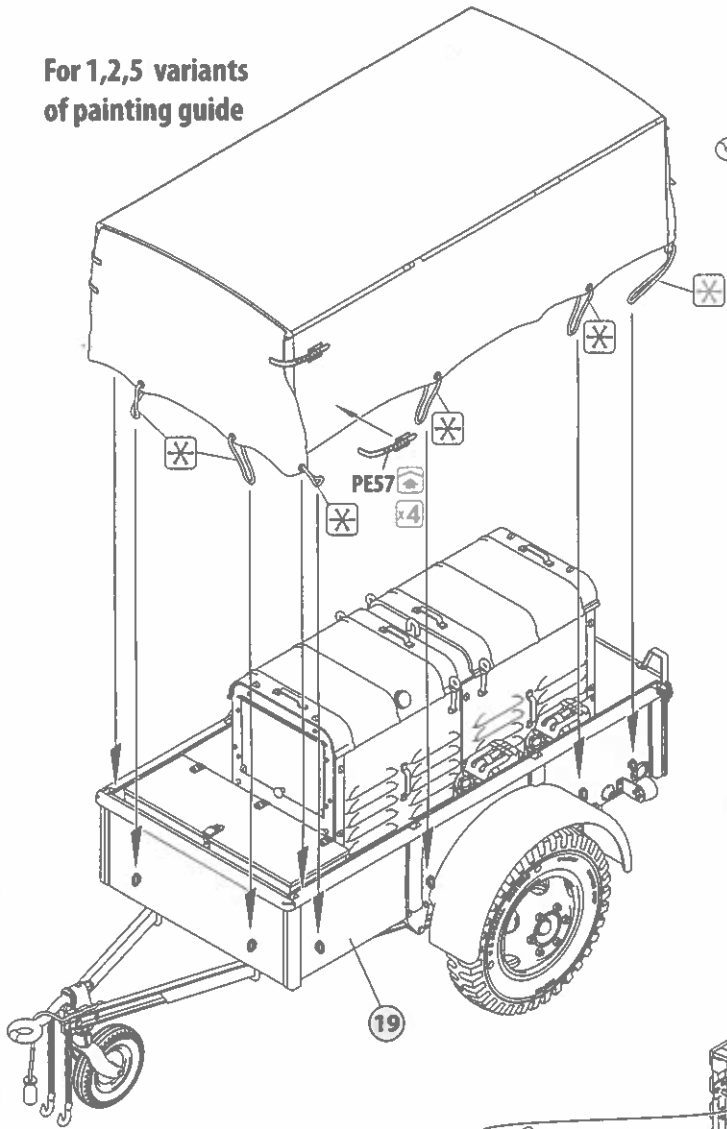


Dc20

TRAILER ASSEMBLING



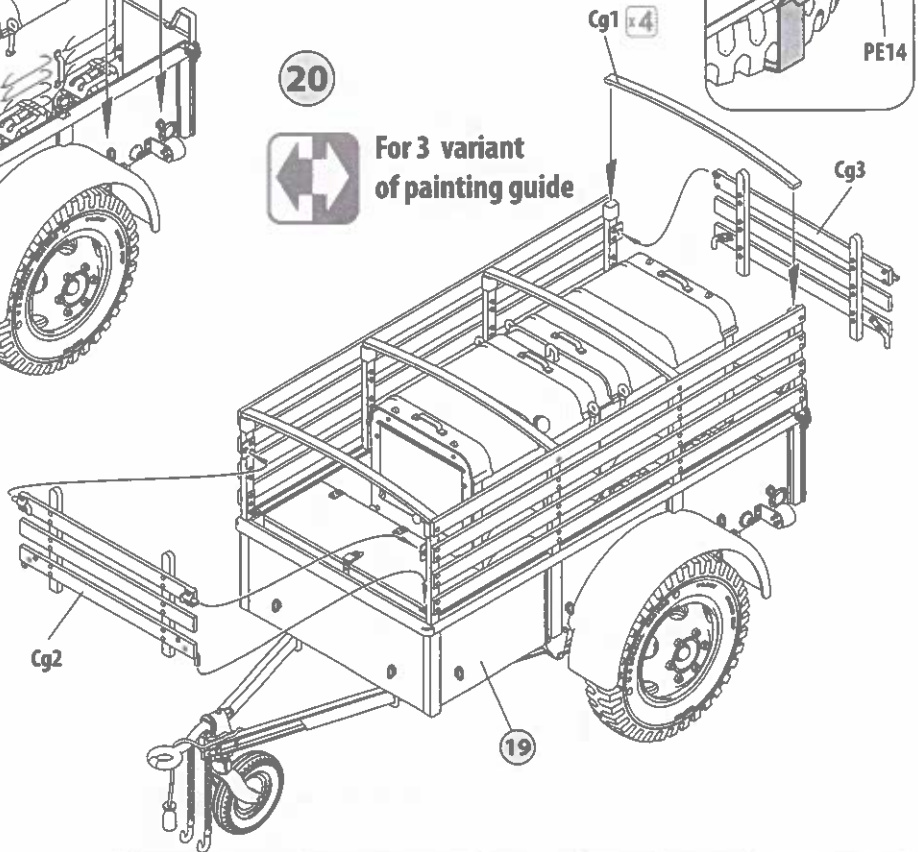
For 1,2,5 variants of painting guide



20



For 3 variant of painting guide





PAINTING GUIDE

U.S. ARMY K-51 RADIO TRUCK with K-52 TRAILER

SCALE
1:35

ARTICULATION KIT
INCLUDES 15 ACCURATELY REPRODUCED PARTS

2 1st Armored Division, 829th Signal Battalion. North Africa, Spring, 1943.



PE14

14
x4

19



MiniArt 35418

VOID ANYWHERE
BOOTH 23



PAINTING GUIDE

U.S. ARMY K-51 RADIO TRUCK with K-52 TRAILER

SCALE
1:35

INTERIOR KIT
INTERIOR IS ACCURATELY REPRODUCED

4 US Marine Corps, 4th Marine Division, Pacific 1944/1945



U.S. ARMY K-51 RADIO TRUCK with K-52 TRAILER

ANTERIOR KIT
INTERIOR IS ACCURATELY REPRODUCED

SCALE
1:35

5 Corps Signals Unit, 2nd Polish Corps. Italy 1944/1945

